

Operational Forum Meeting



Radisson Grafton Hotel, 130 Tottenham Court Road, London.

System Management Principles Statement



- **Summary of balancing actions and breaches for December 2016**
- **Performance compared to last year**

Summary Report

1st January 2016 to 31st December 2016

	Dec-16
Total Number of Buy Actions	4
Total Number of Sell Actions	10
Total	14

	Dec-16	Dec-15
Number of Balancing Actions (Calendar year to date)	143	187

Operational Overview

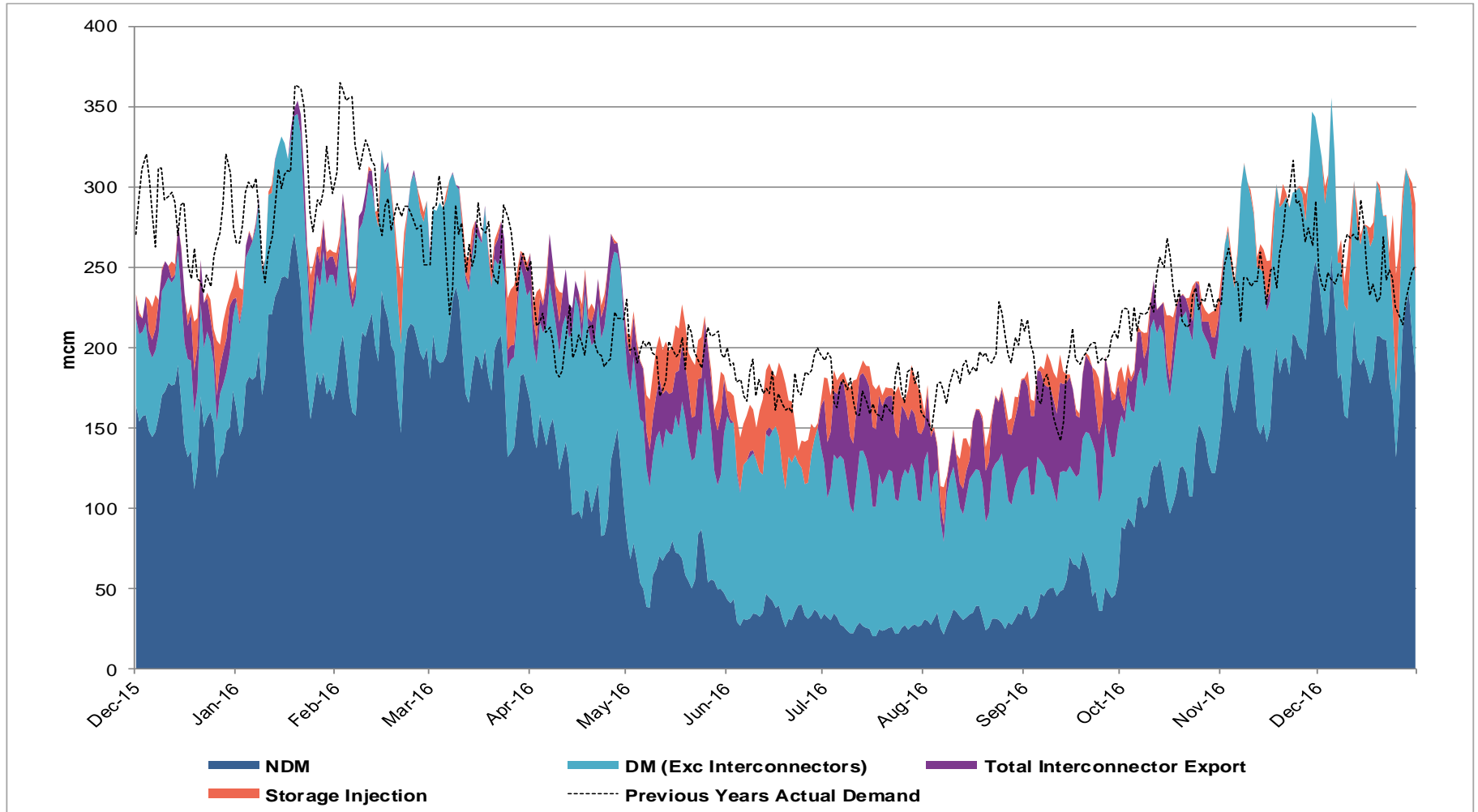


Demands



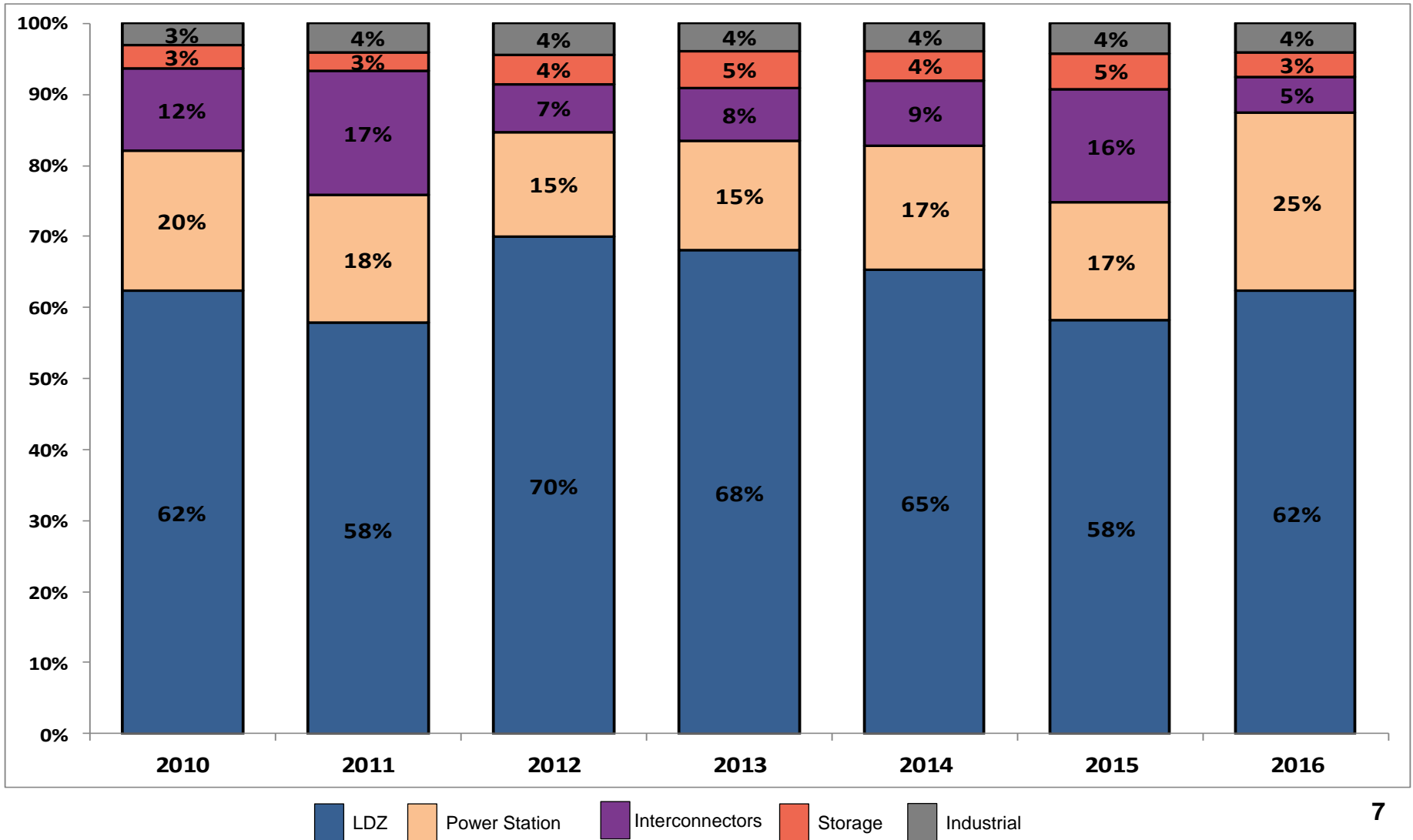
Gas Demand Breakdown

1st December 2015 to 31st December 2016 vs Previous Year



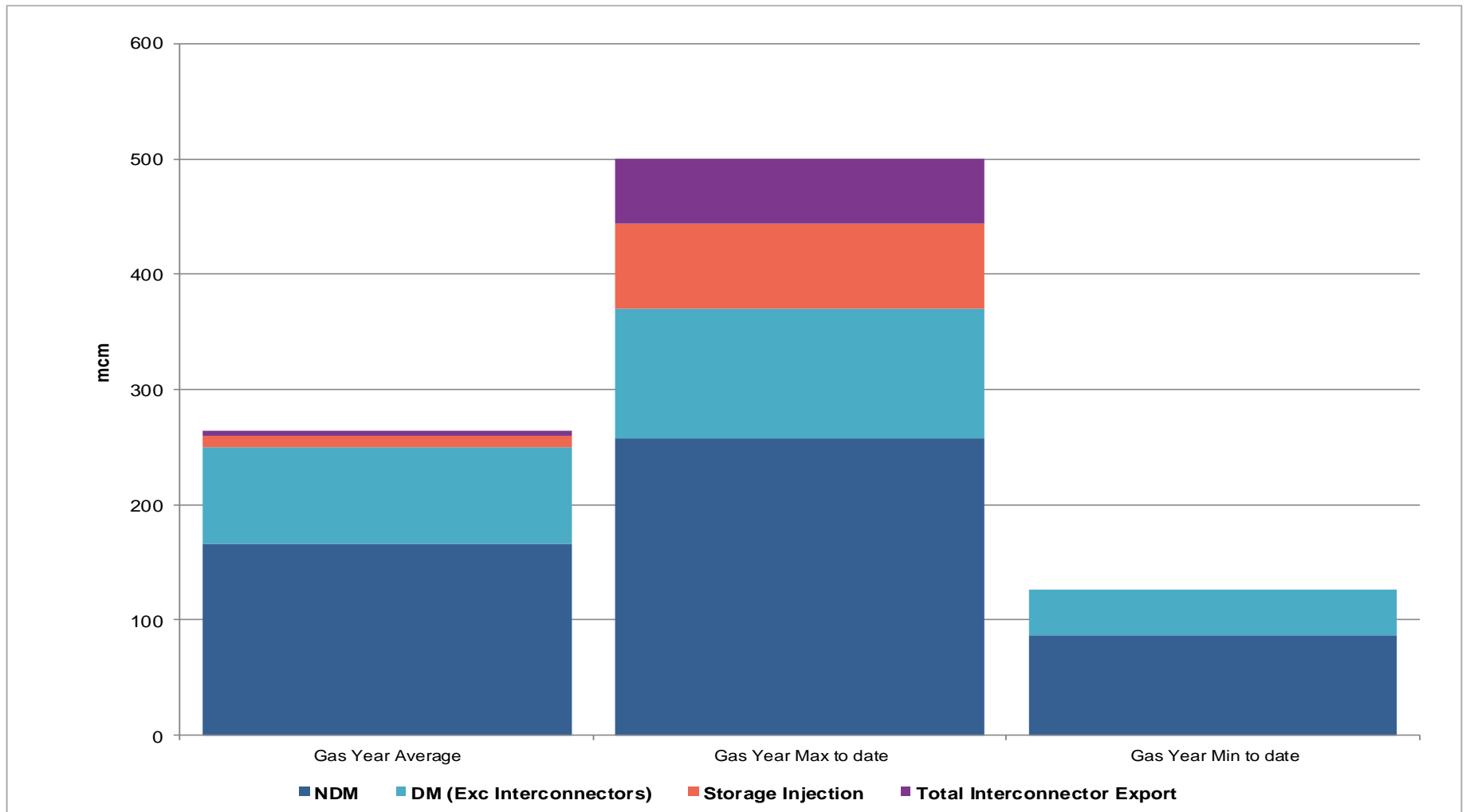
Gas Demand Breakdown

1st October 2016 to 31st December 2016 vs Same Period in Previous Years



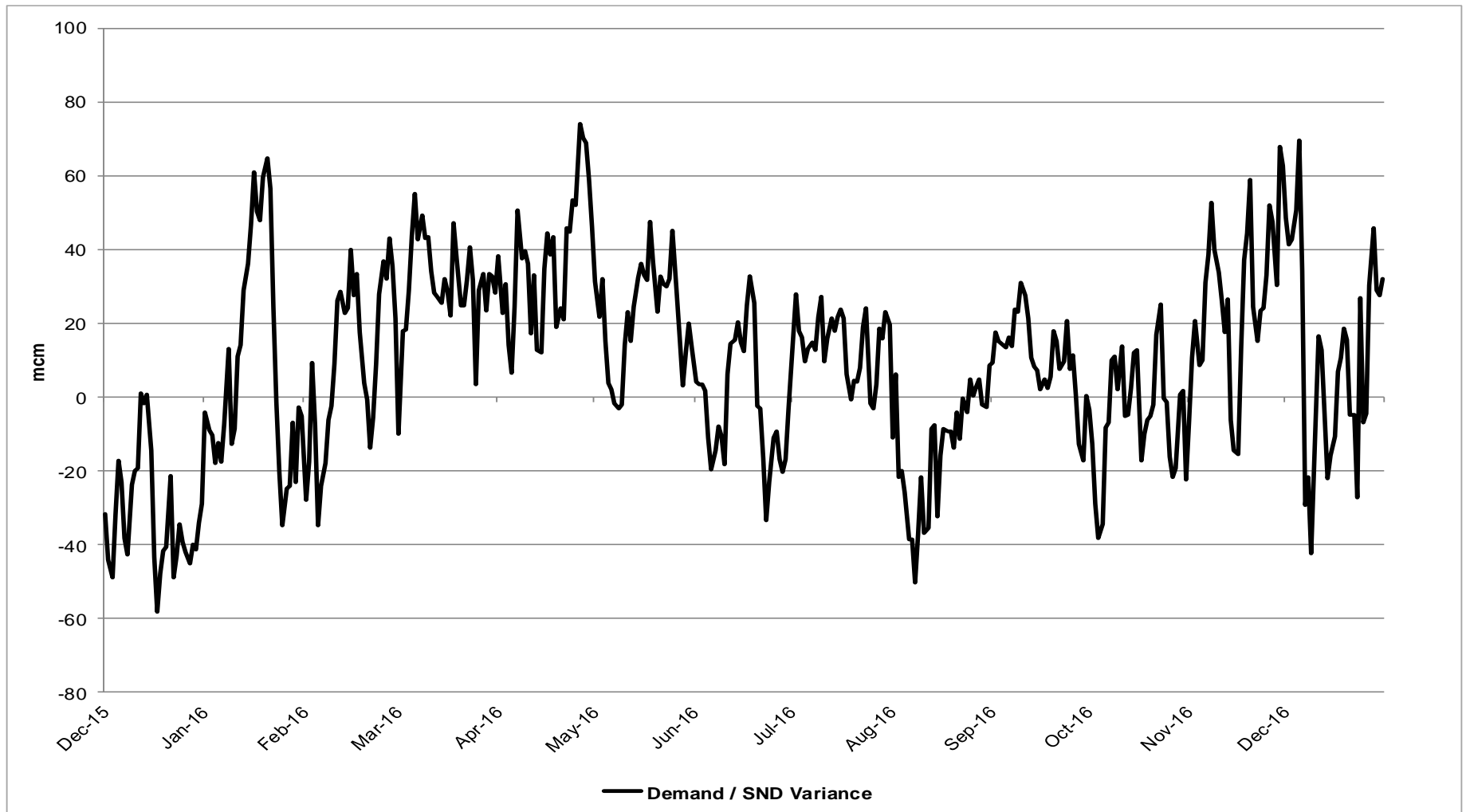
Gas Demand Statistics

1st October 2016 to 31st December 2016



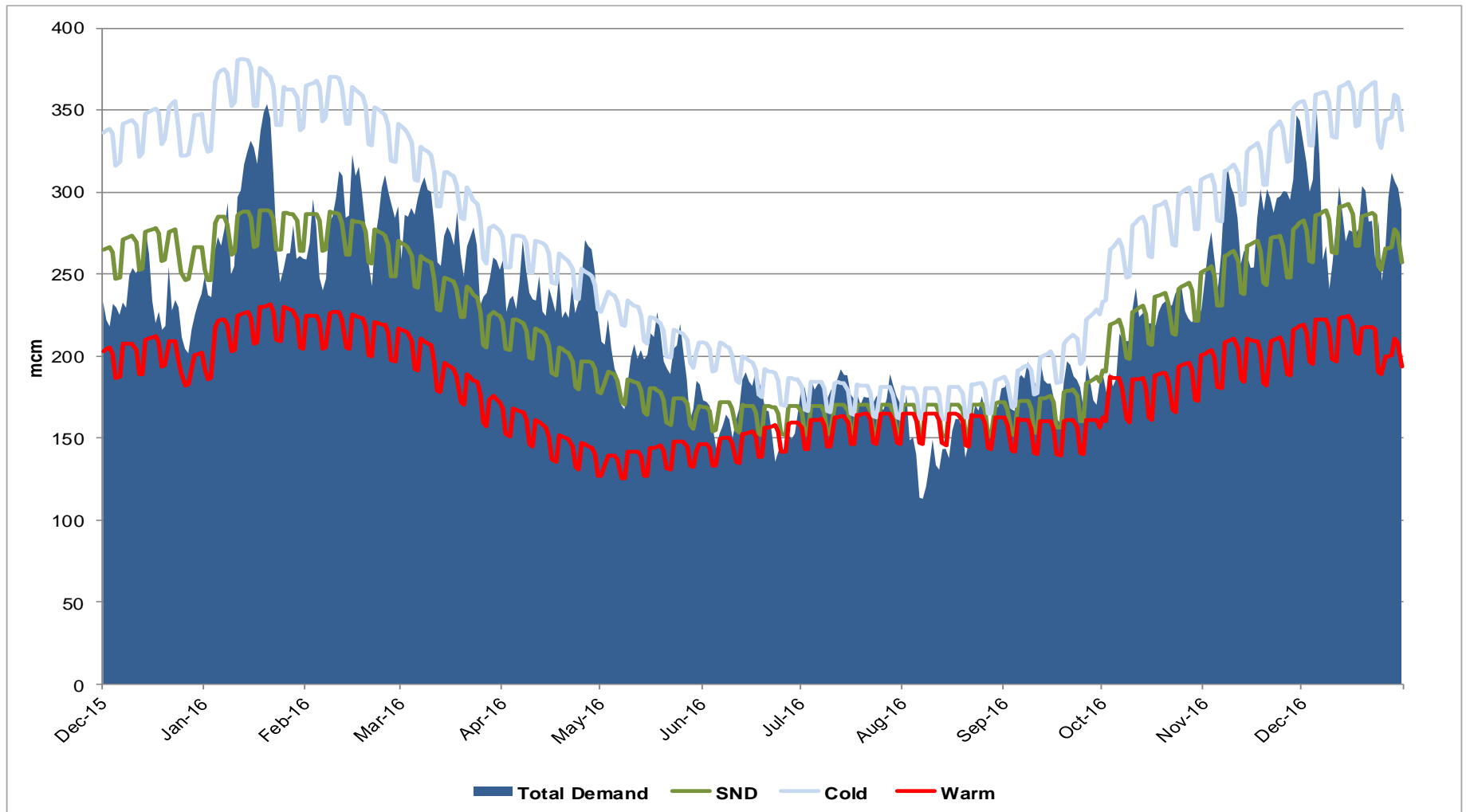
Demand Variance from SND

1st December 2015 to 31st December 2016



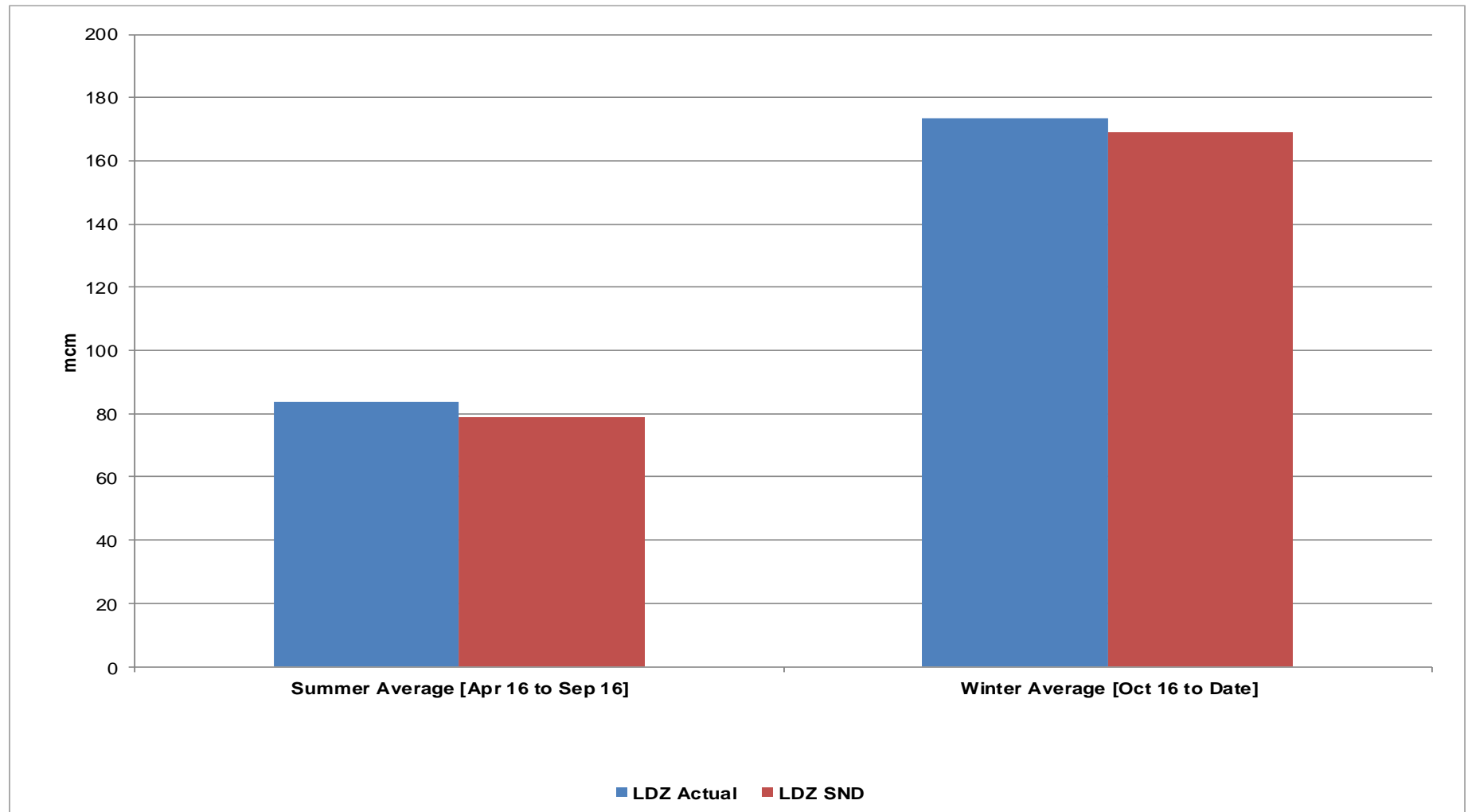
Gas Demand Vs SND / Cold / Warm

1st December 2015 to 31st December 2016



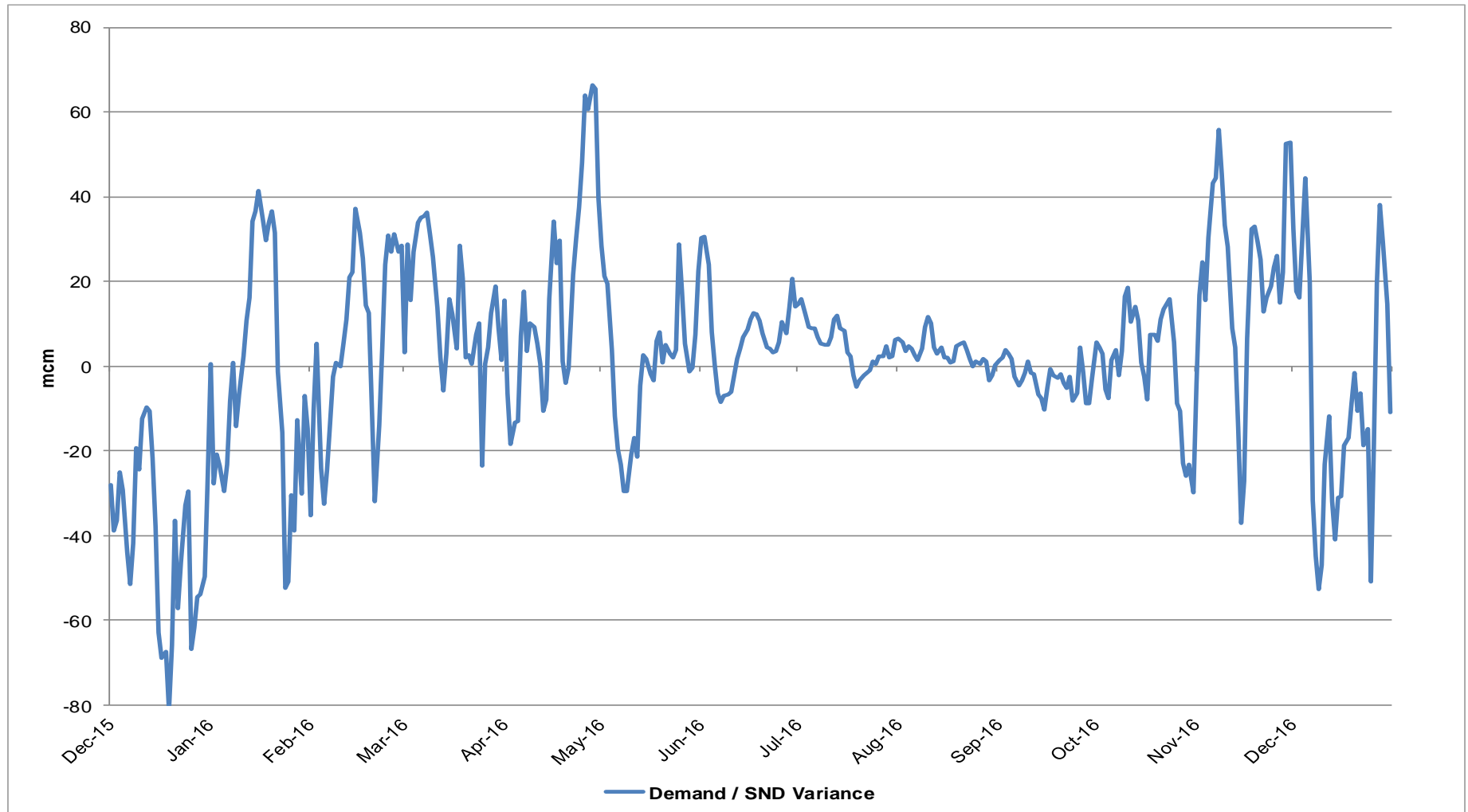
LDZ Actual Demand Vs LDZ SND

1st April 2016 to 31st December 2016



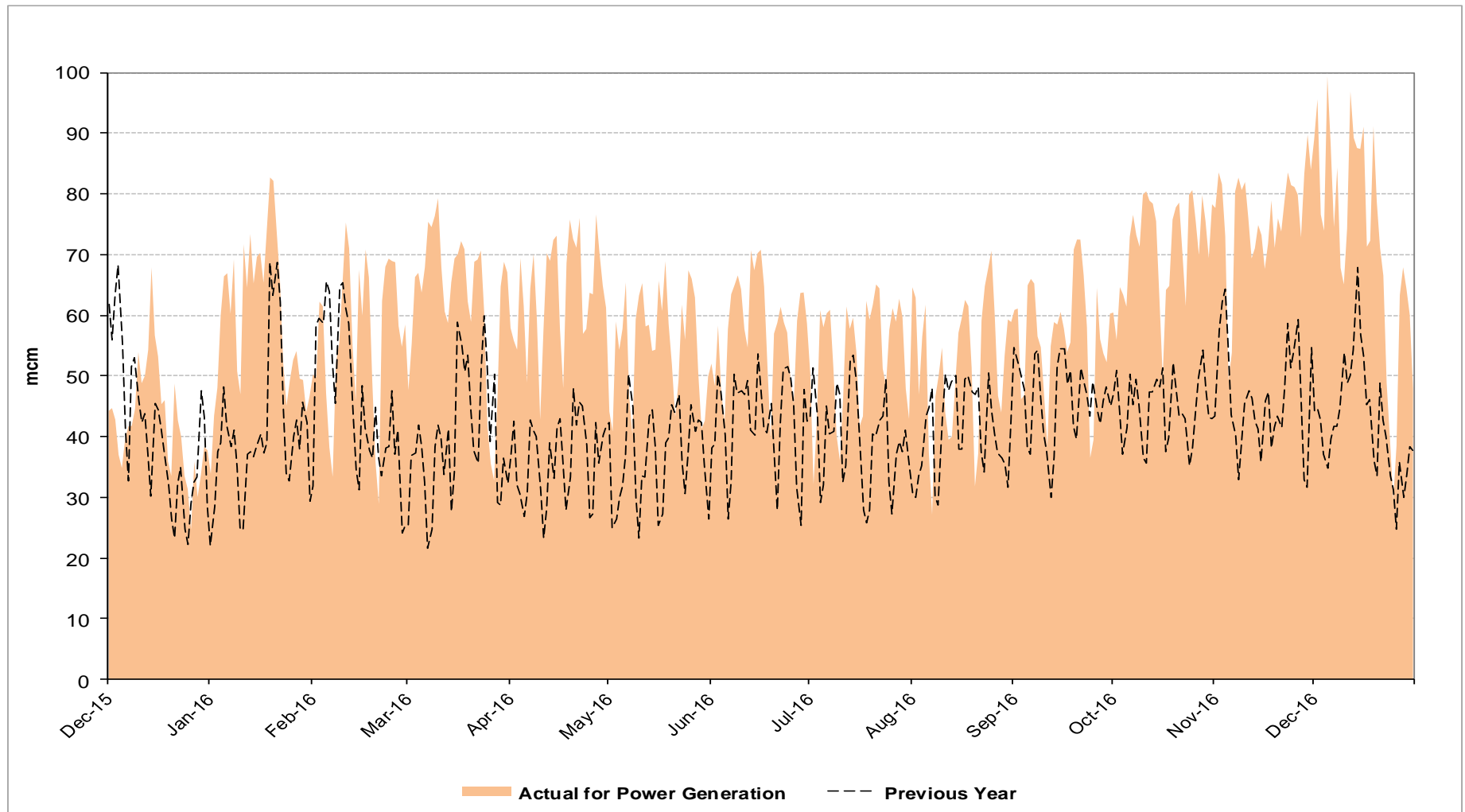
LDZ Demand / LDZ SND Variance

1st December 2015 to 31st December 2016



Gas Consumption for Power Generation

1st December 2015 to 31st December 2016

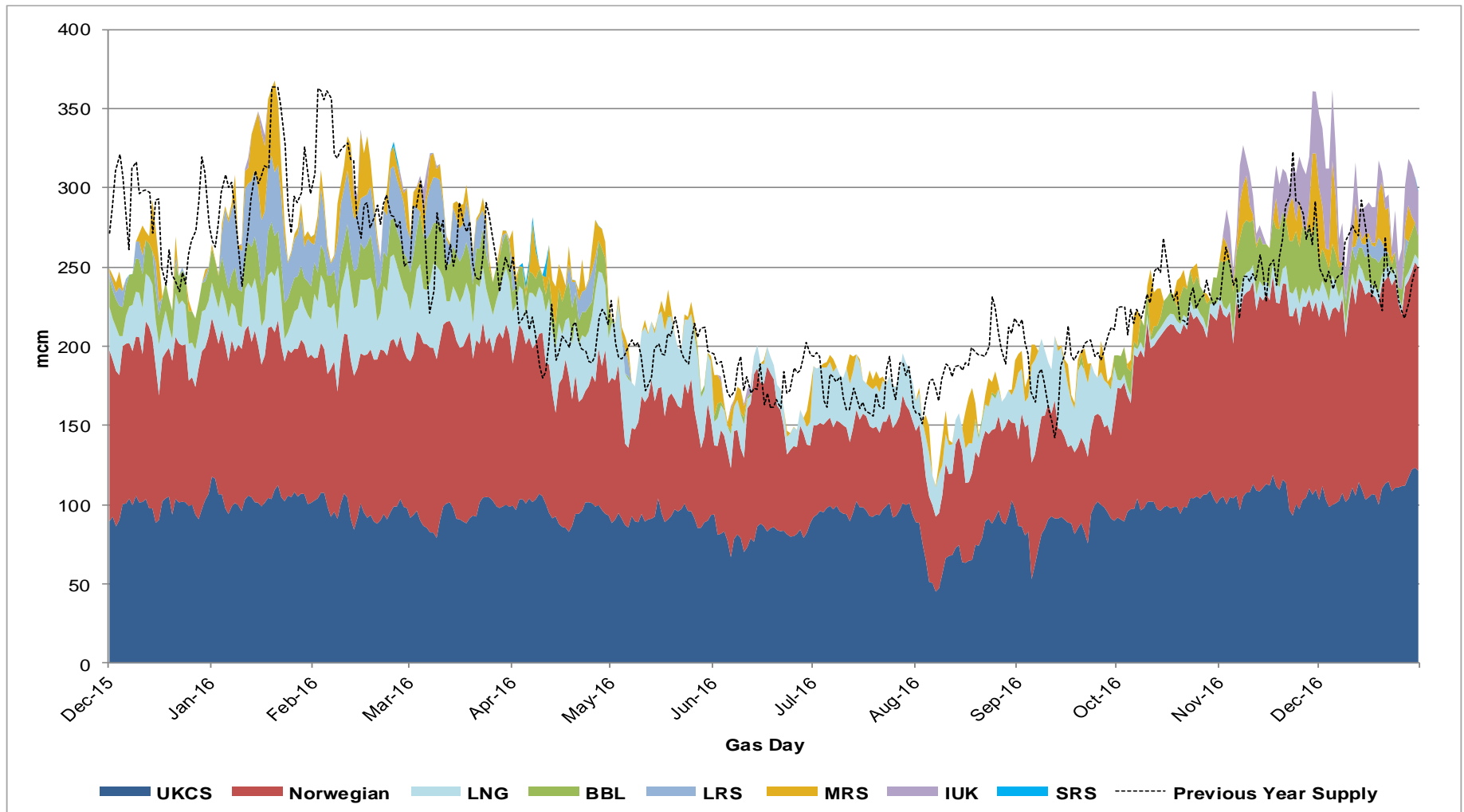


Supplies



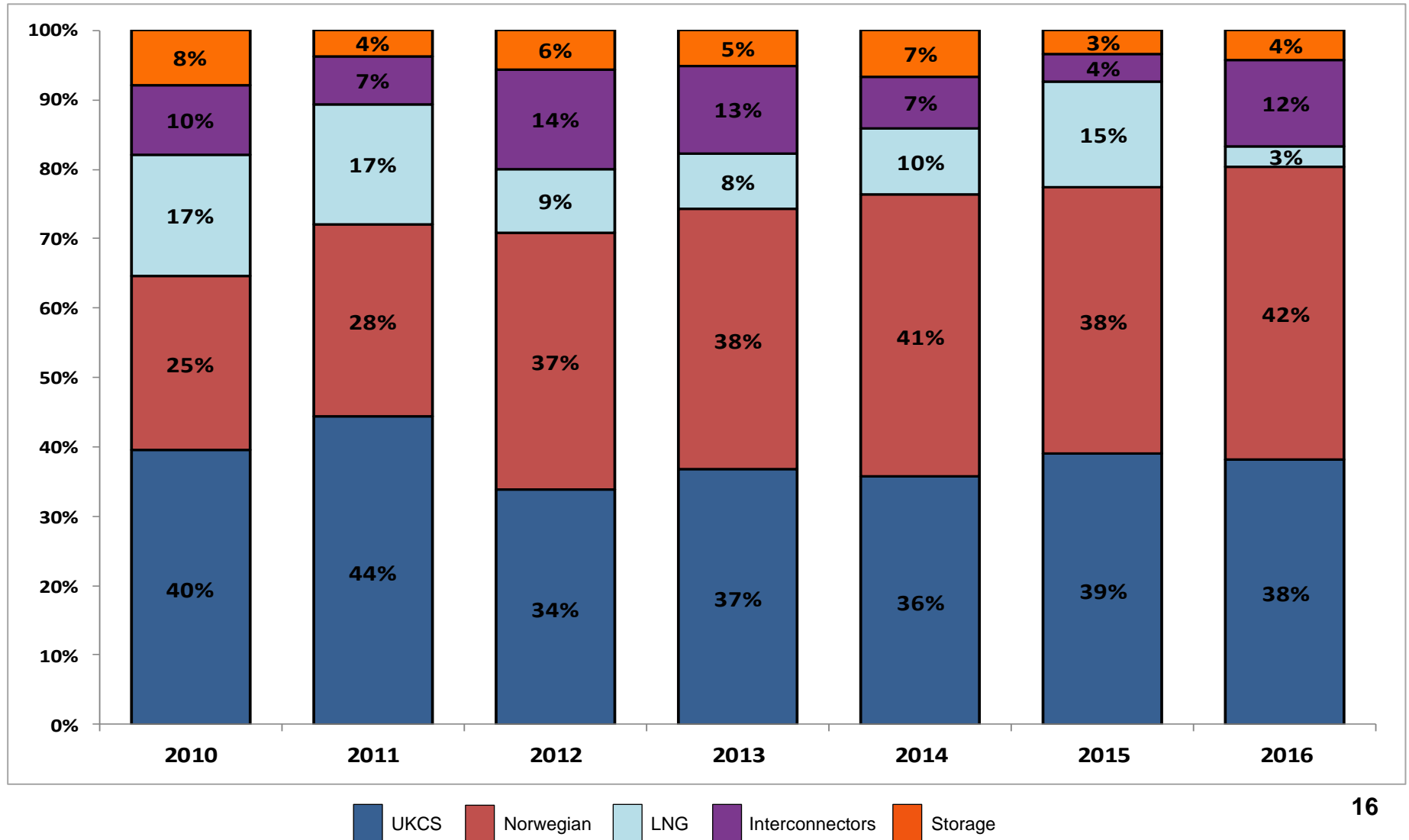
Gas Supply Breakdown

1st December 2015 to 31st December 2016 vs Previous Year



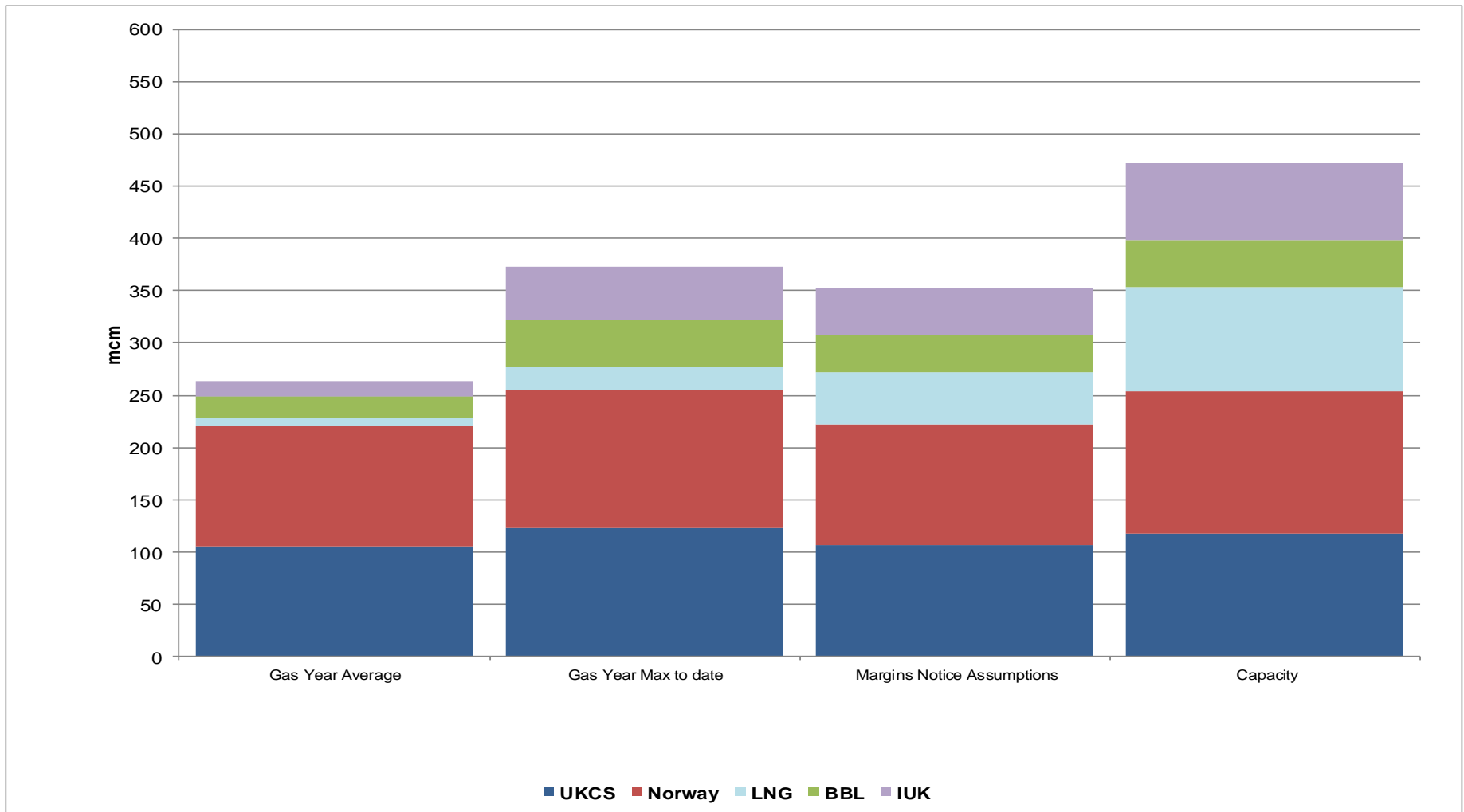
Gas Supply Breakdown

1st October 2016 to 31st December 2016 vs Same Period in Previous Years



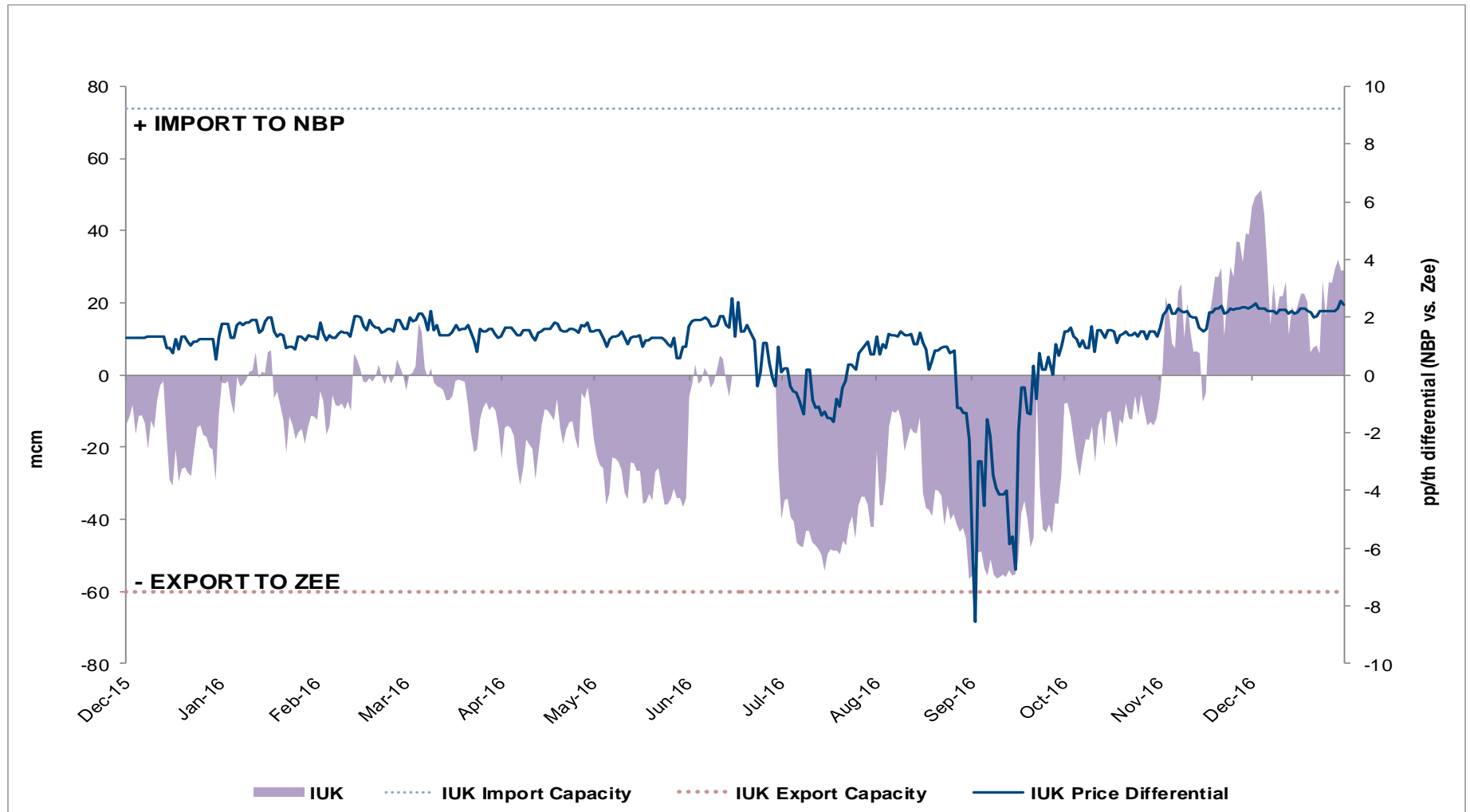
NSS (Non Storage Supply)

1st October 2016 to 31st December 2016



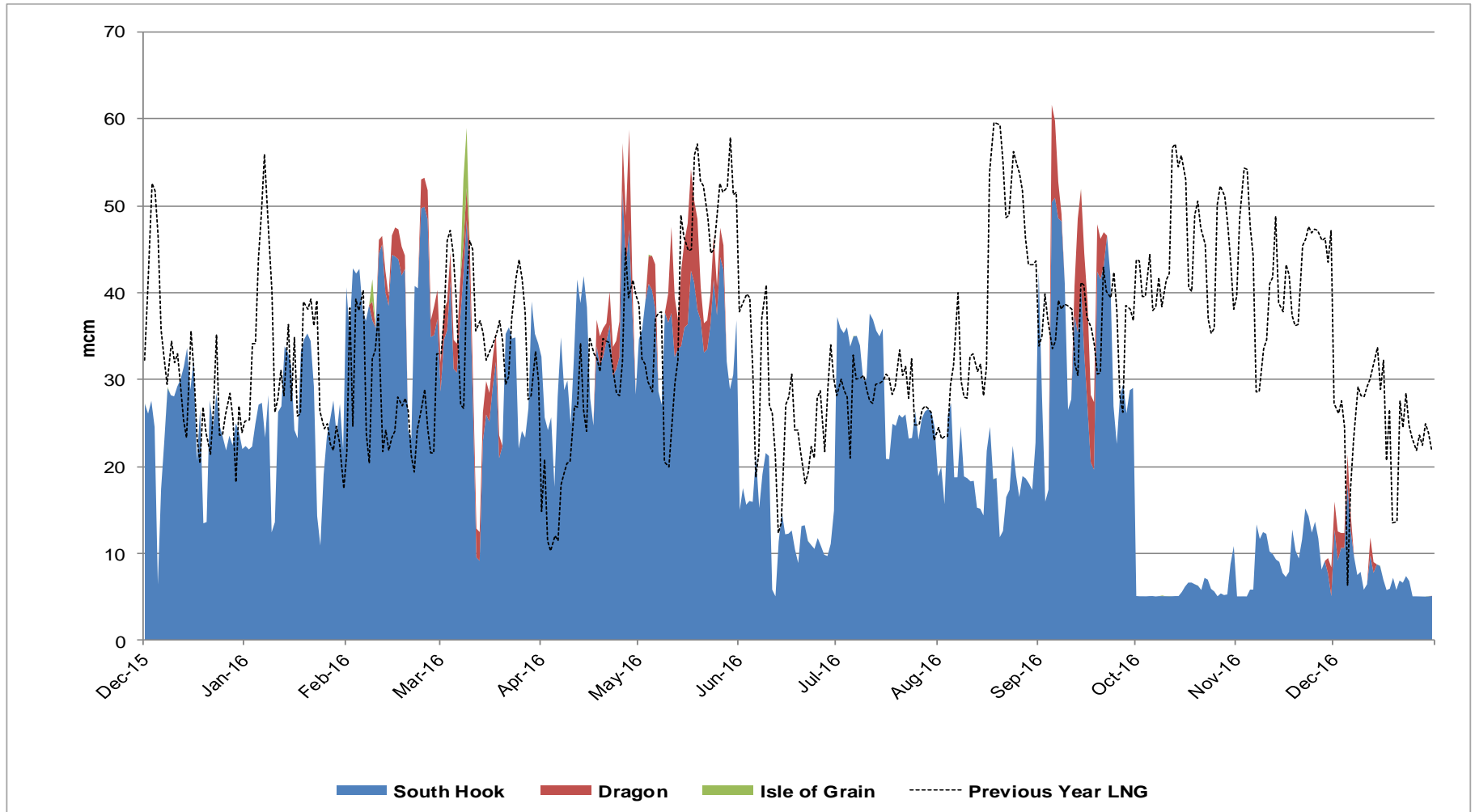
IUK Flows vs NBP & ZEE Price Differential

1st December 2015 to 31st December 2016



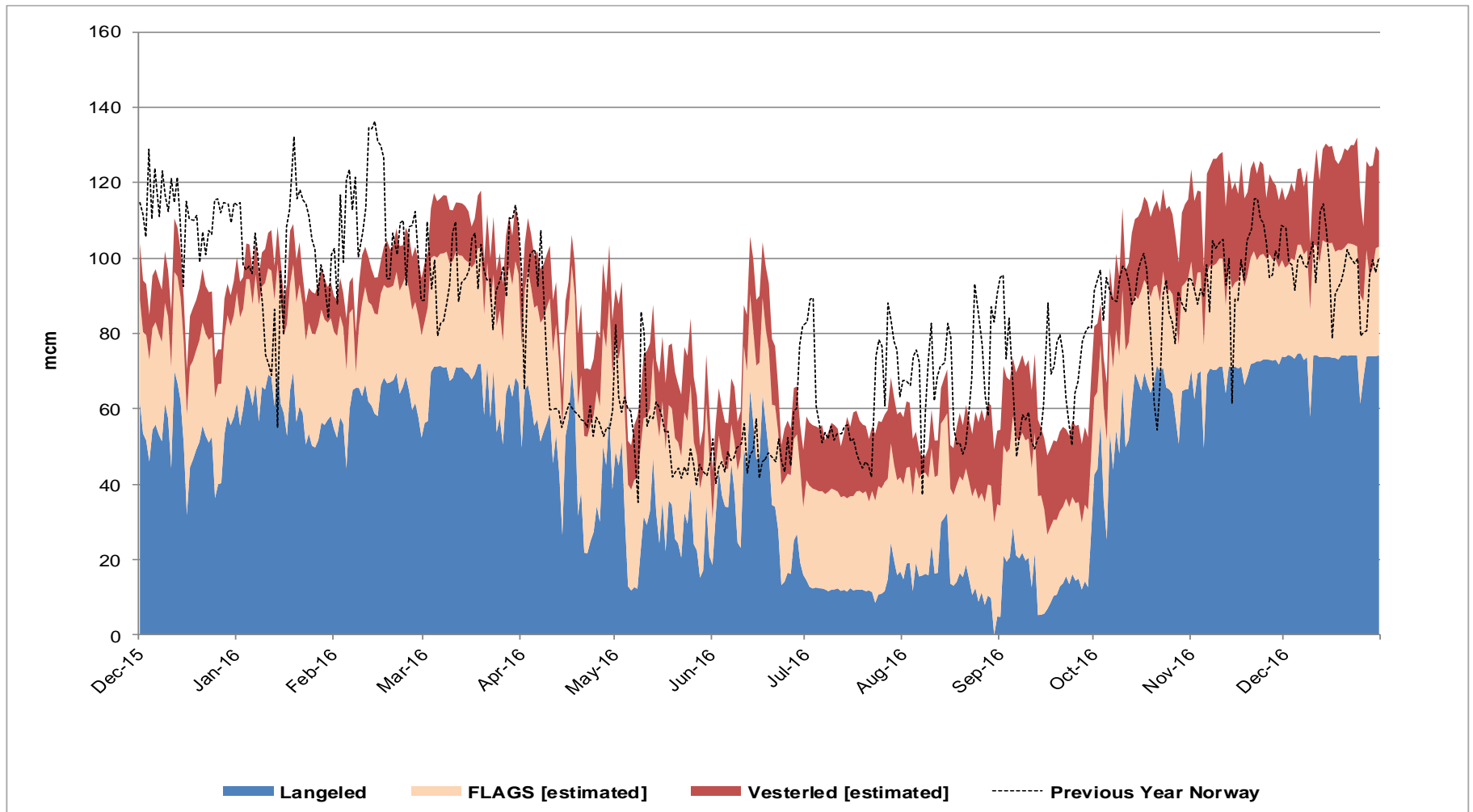
LNG Terminal Flows

1st December 2015 to 31st December 2016



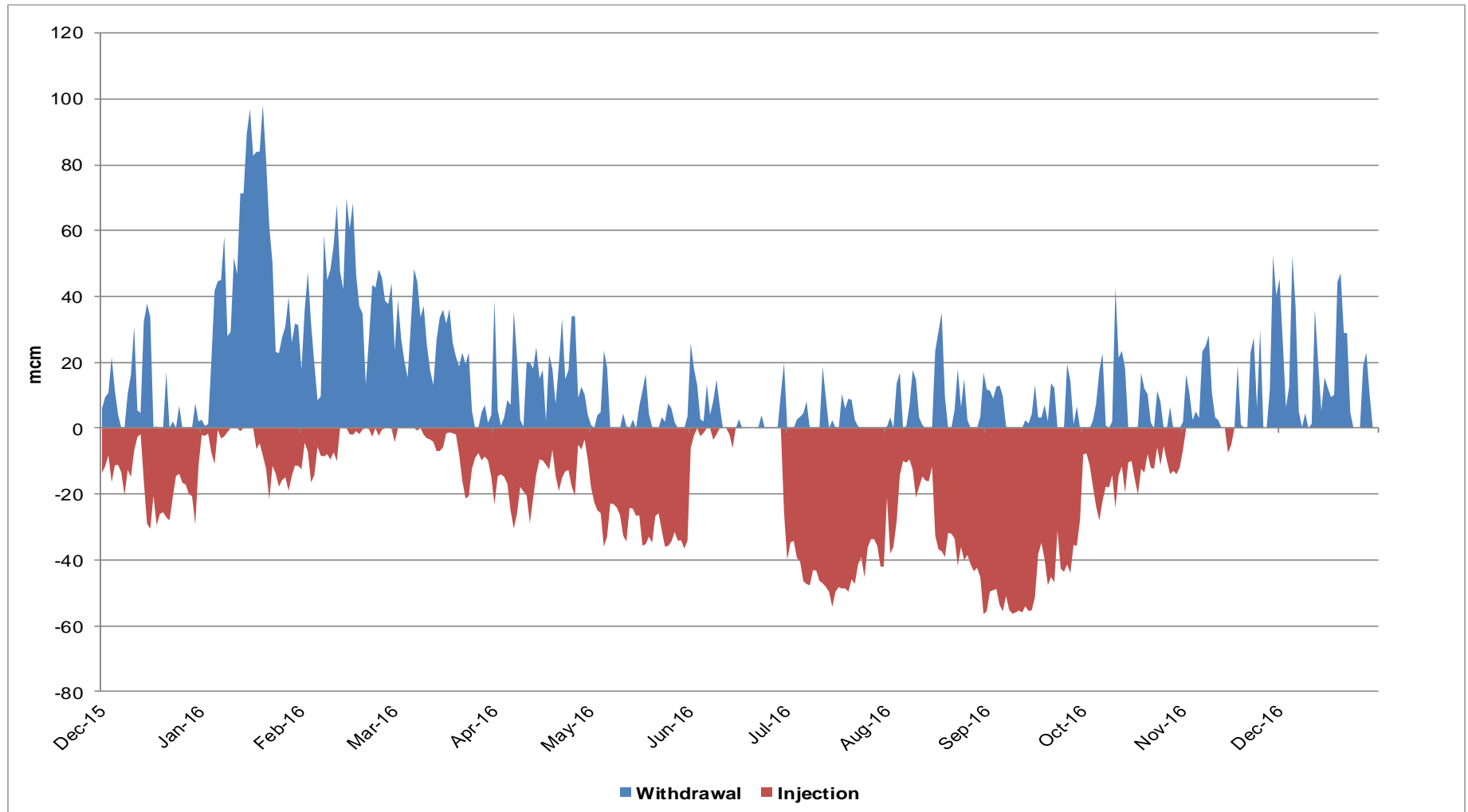
Norwegian Flows

1st December 2015 to 31st December 2016



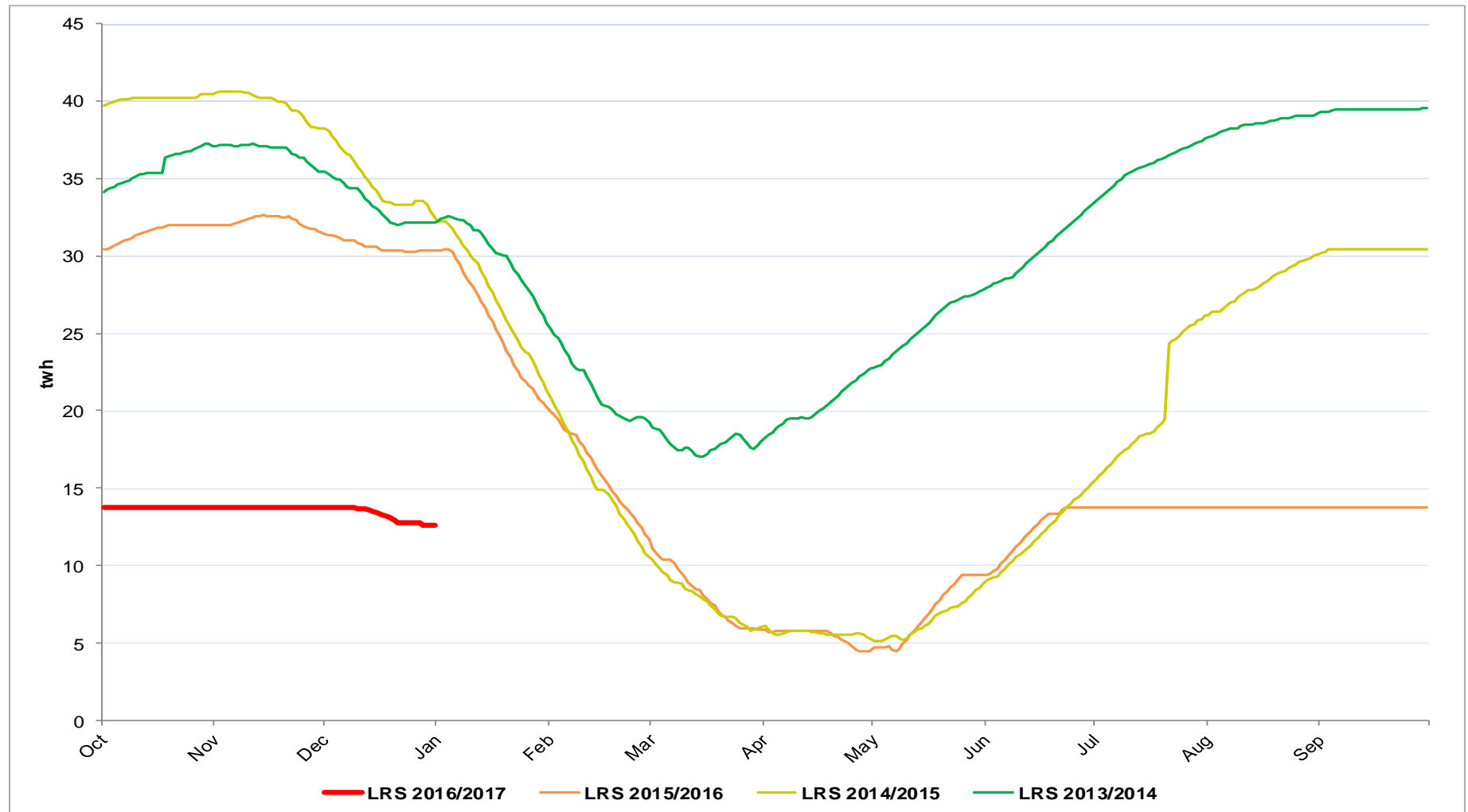
Storage Withdrawal vs Injection

1st December 2015 to 31st December 2016



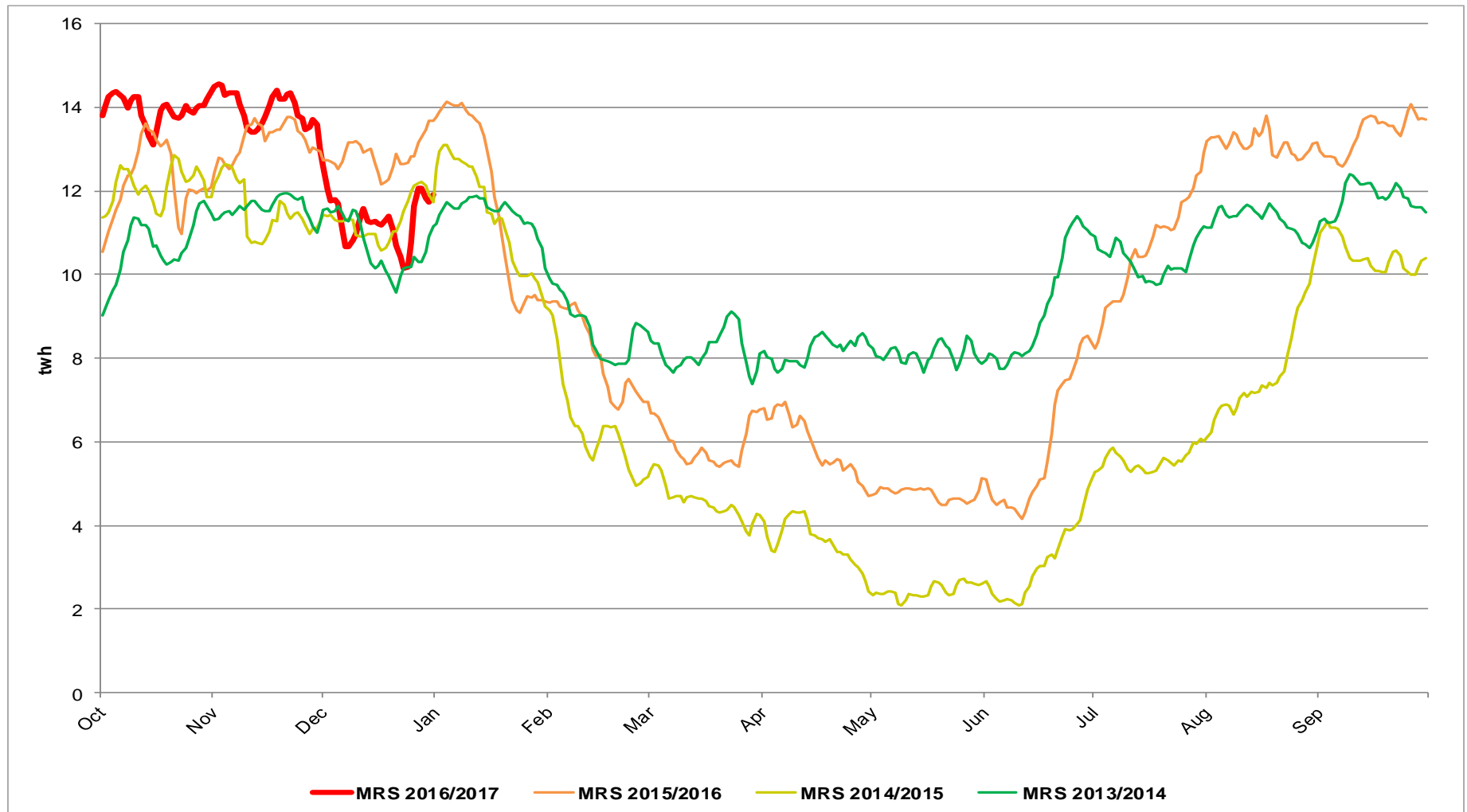
Long Range Storage Stocks (LRS)

1st October 2016 to 31st December 2016 vs Previous Years



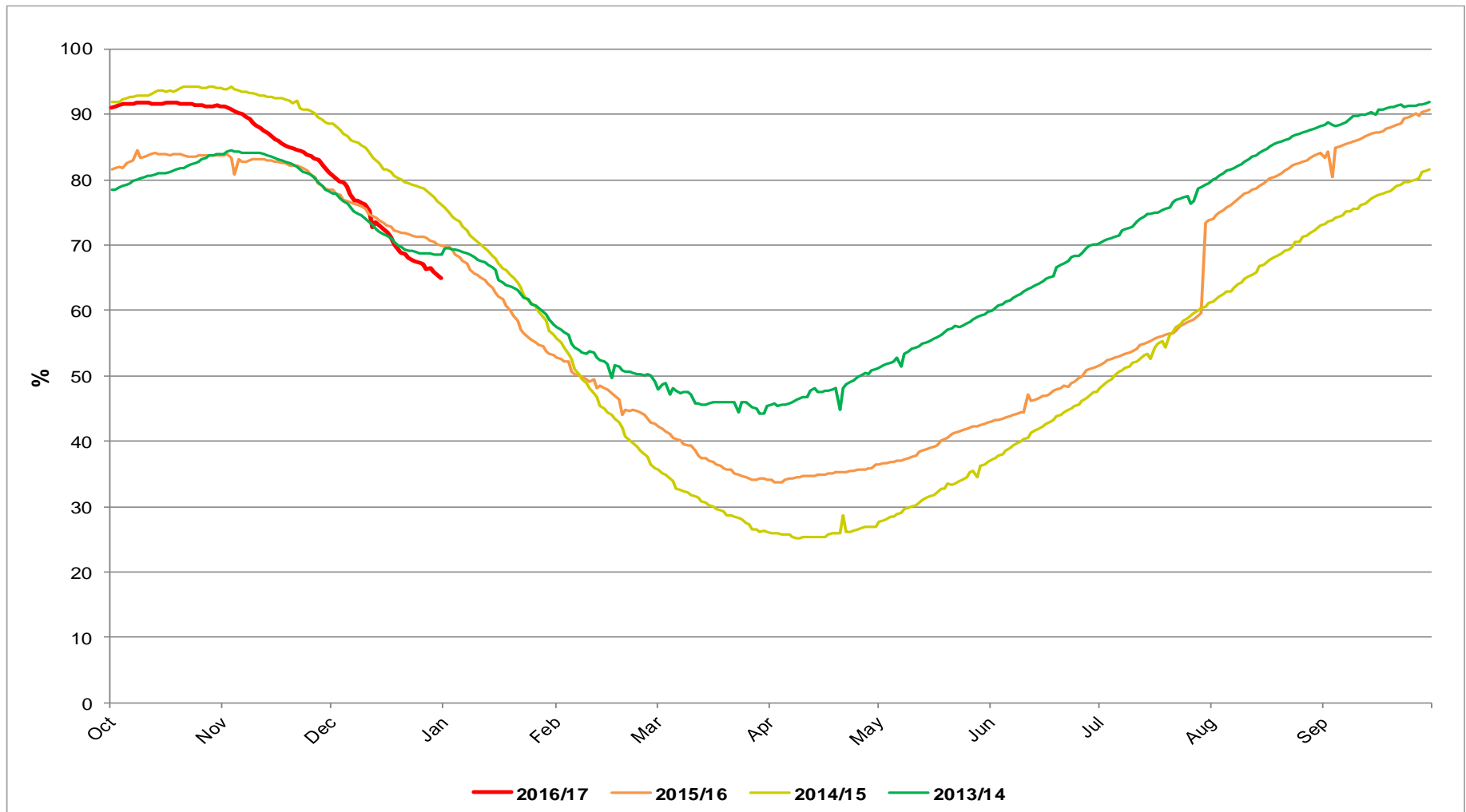
Medium Range Storage Stocks (MRS)

1st October 2016 to 31st December 2016 vs Previous Years



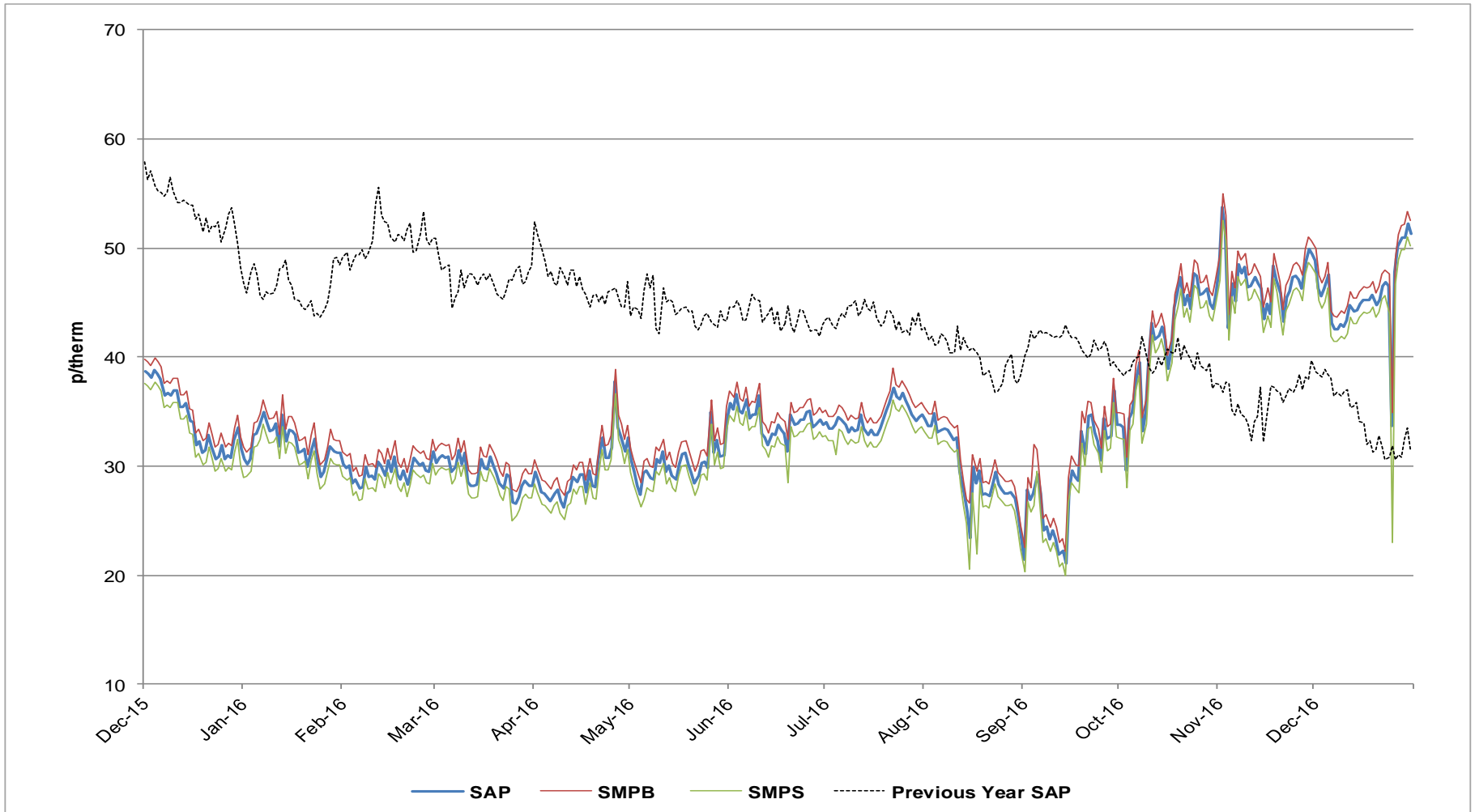
Combined EU Storage Stocks (% Full)

1st October 2016 to 31st December 2016 vs Previous Years

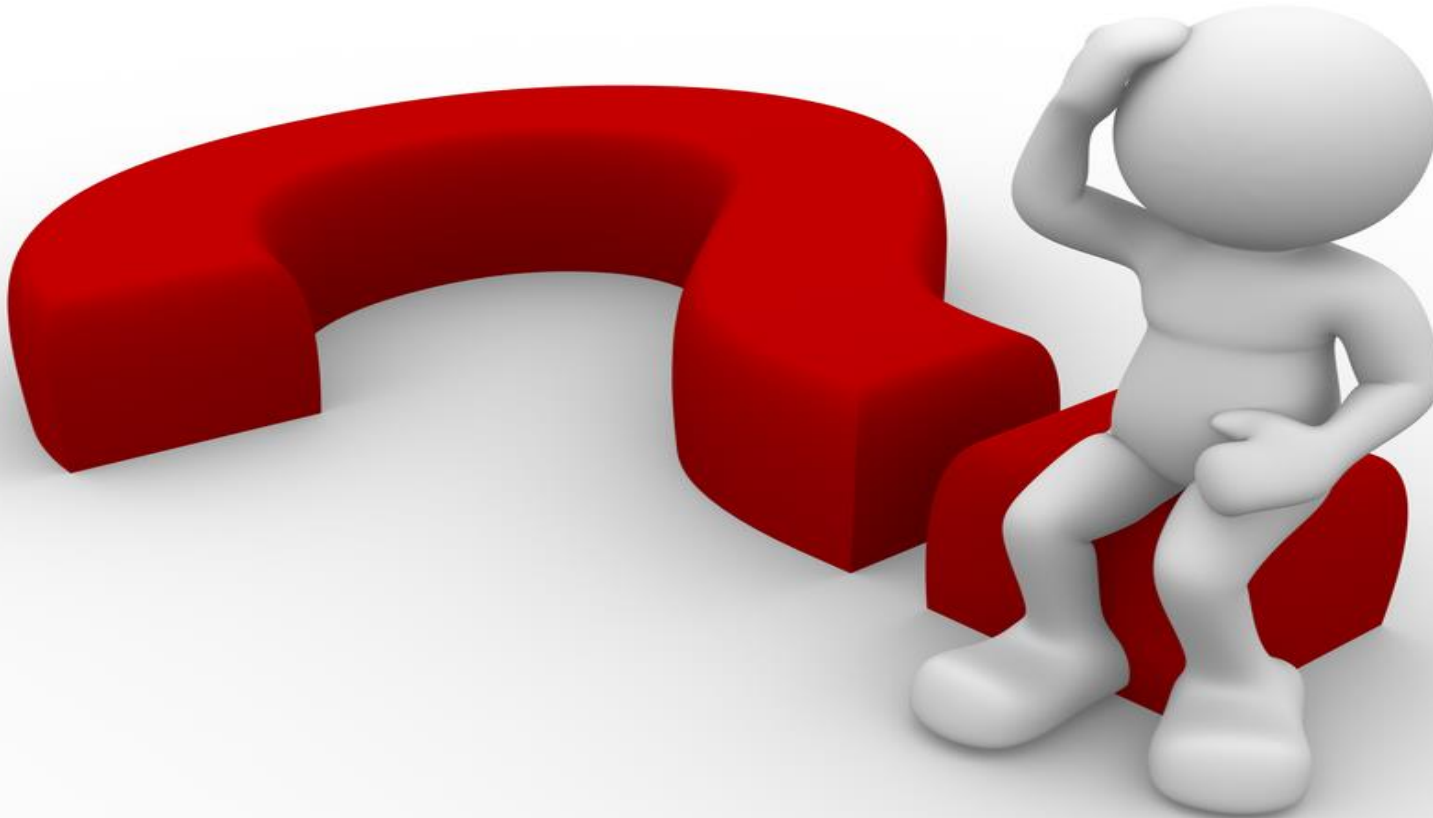


UK Gas Prices

1st December 2015 to 31st December 2016 vs Previous Year



What Operational Issues Affected Users?



Transporter Actions and Neutrality

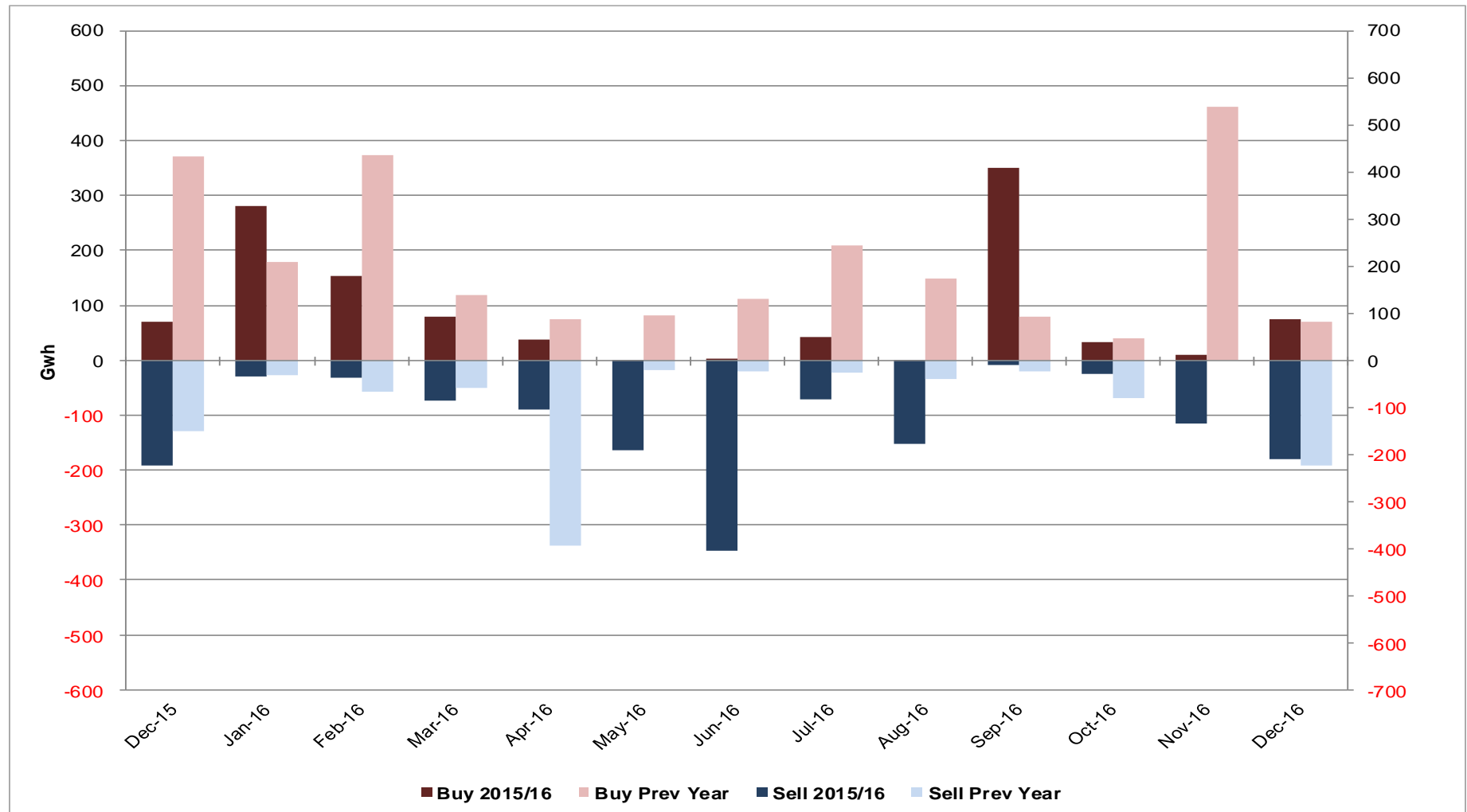


- Energy Balancing
- Capacity

Transporter Energy Traded on the OCM

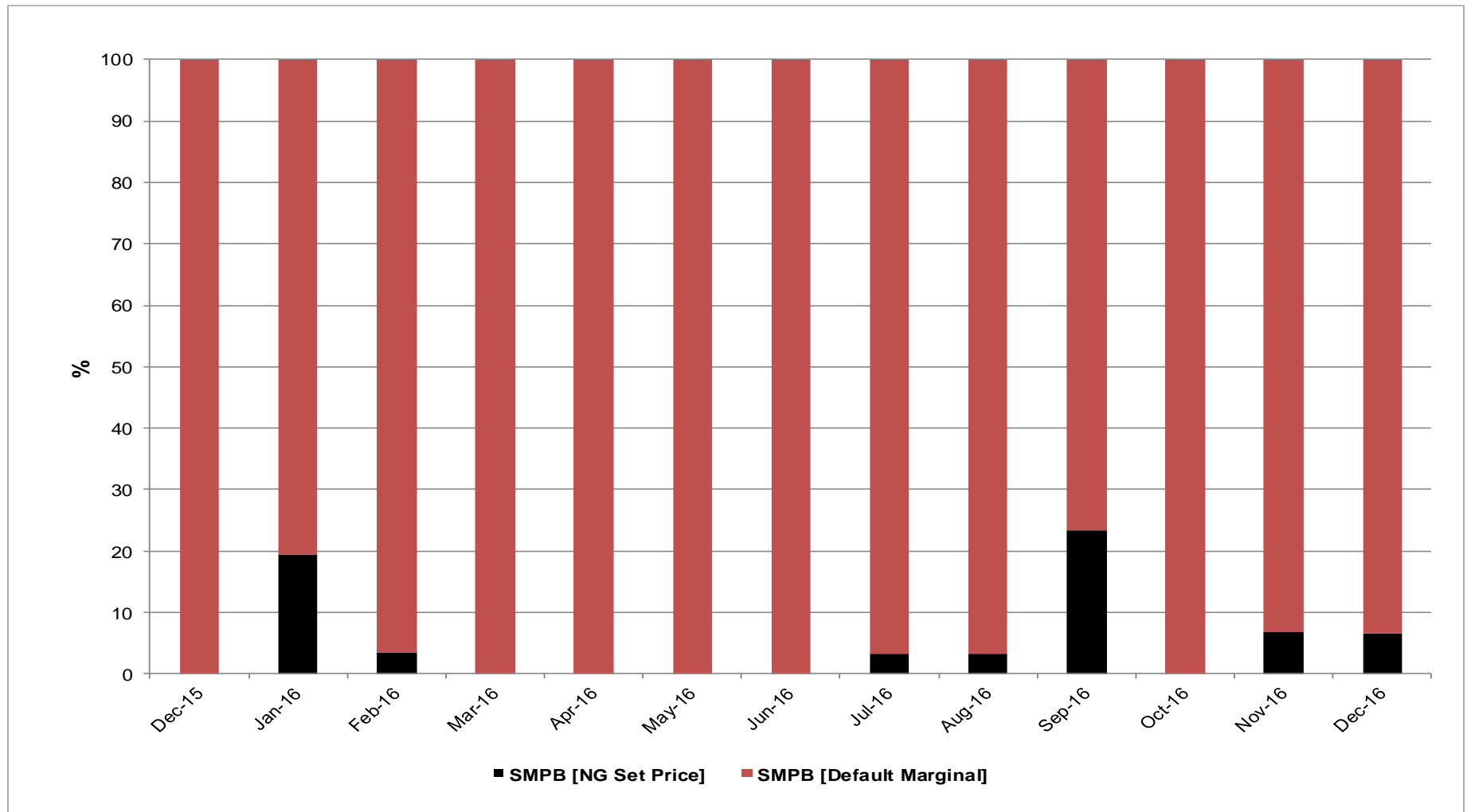
NGG Monthly Buys and Sells

1st December 2015 to 31st December 2016 vs Previous Year



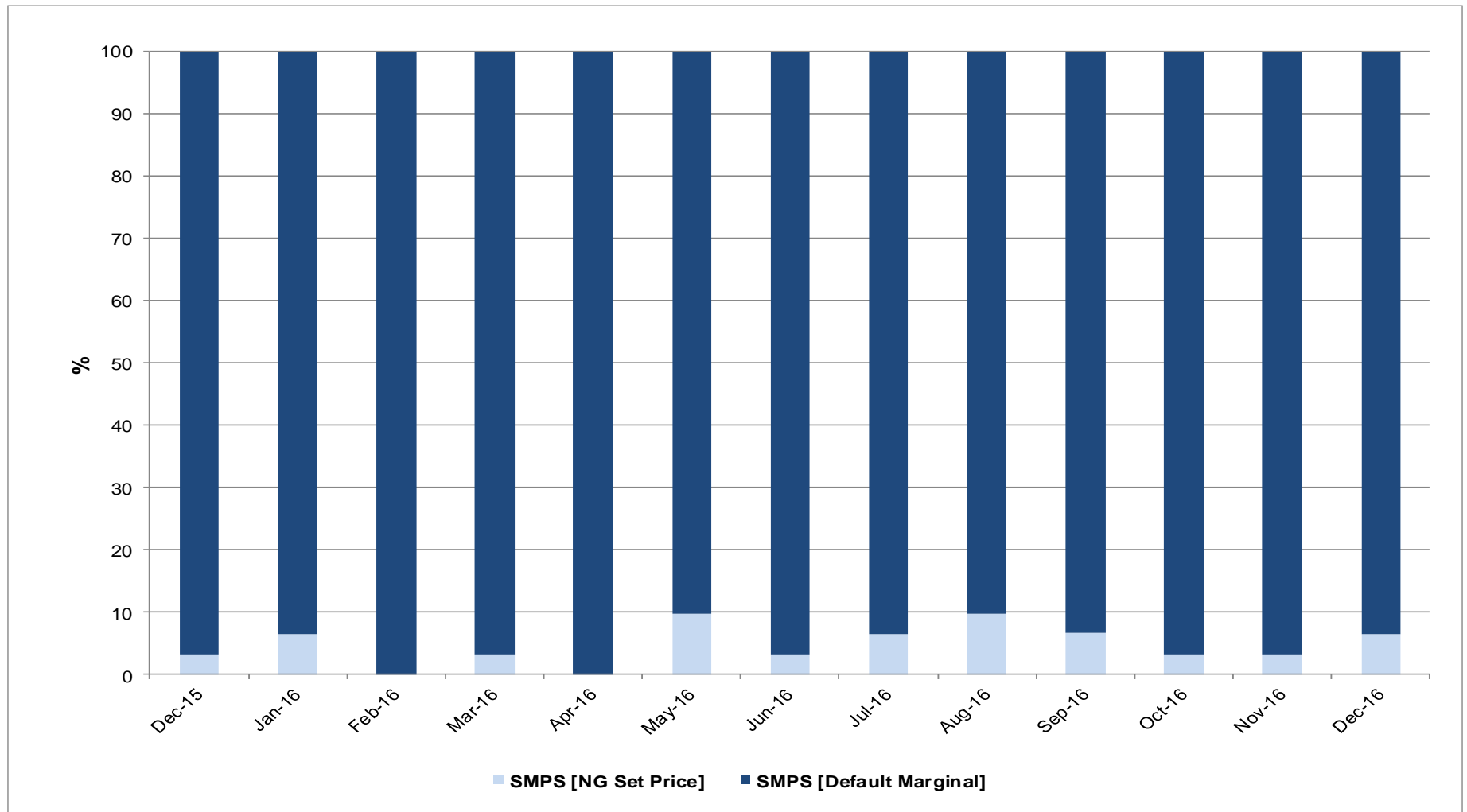
Days of Default SMP Prices (SMPB)

December 2015 to December 2016



Days of Default SMP Prices (SMPS)

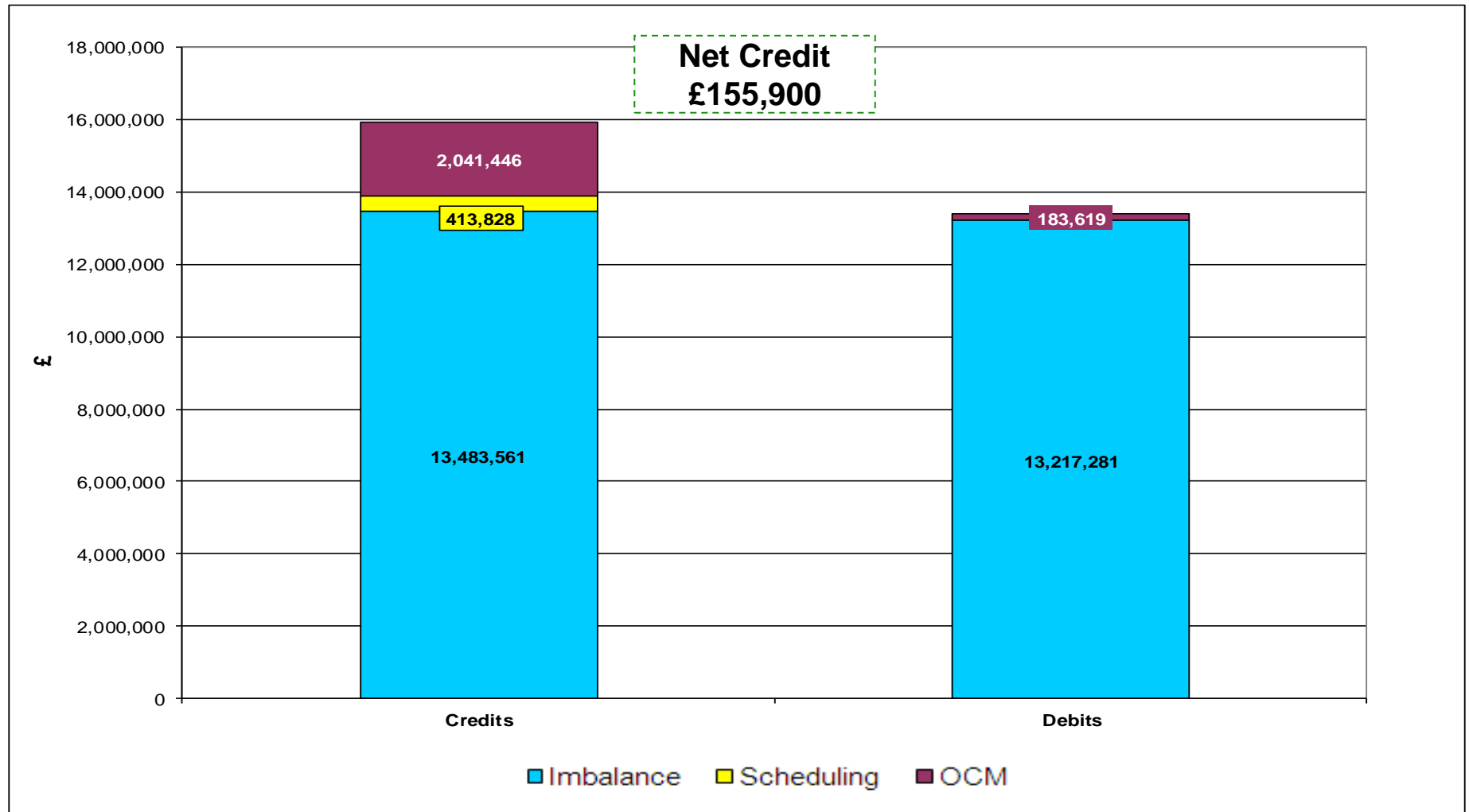
December 2015 to December 2016



Energy Balancing - Balancing Costs

Payments / Charges / Net Credit / Debit (Imbalance / Scheduling / OCM)

November 2016



Energy Balancing - Balancing Costs

Payments / Charges / Net Credit / Debit (Imbalance / Scheduling / OCM)

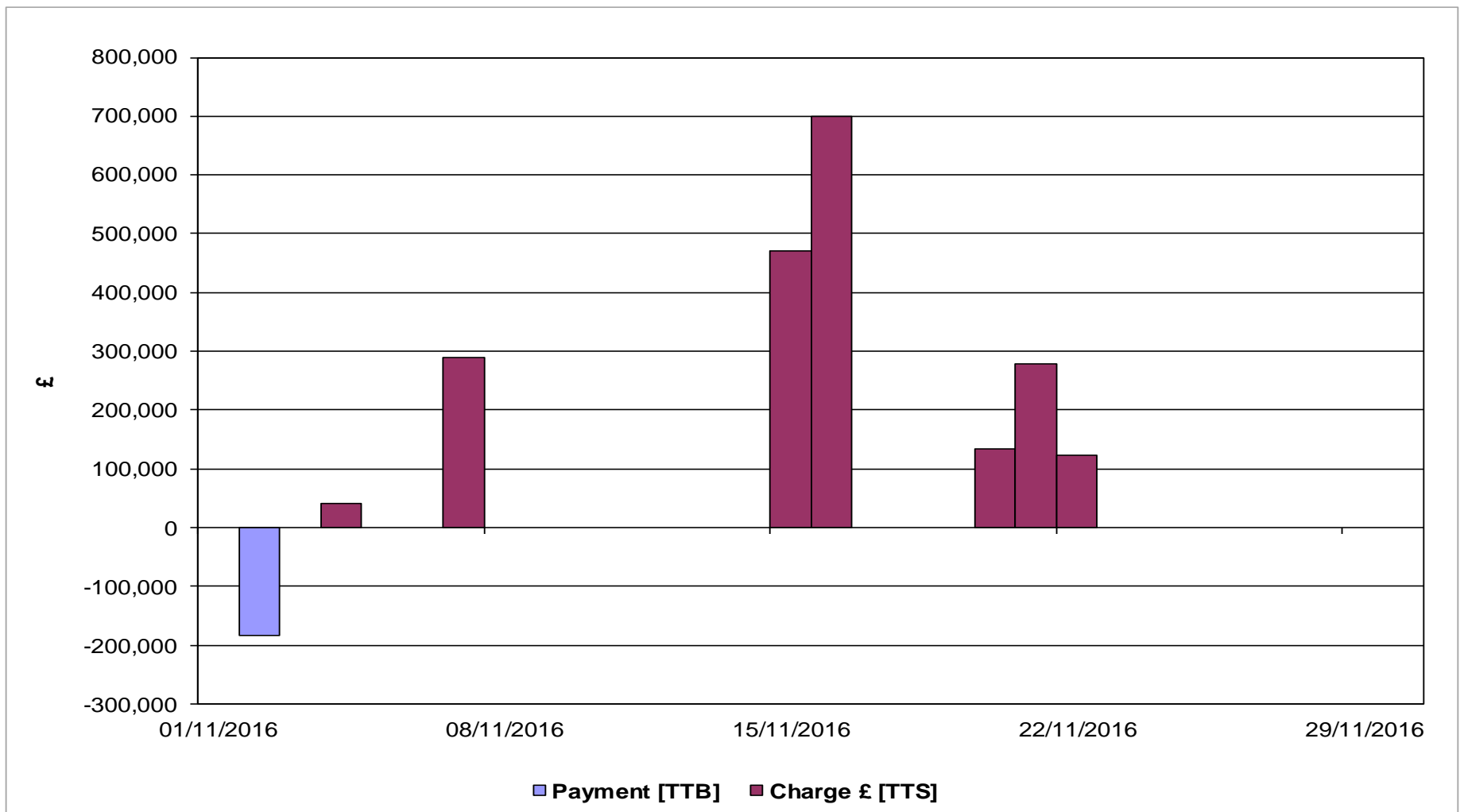
November 2016

		Nov-16
Imbalance	Payment £ [DCS]	-13,217,281
	Charge £ [DCT]	13,483,561
Scheduling	Exit Charge £ [DXS]	10,300
	Exit Charge £ [EXS]	78,955
	Entry Charge £ [ESC]	324,573
OCM	Payment £ [TTB]	-183,619
	Charge £ [TTS]	2,041,446
Balancing Costs		2,537,934

Energy Balancing - Balancing Costs

OCM Payments / Charges

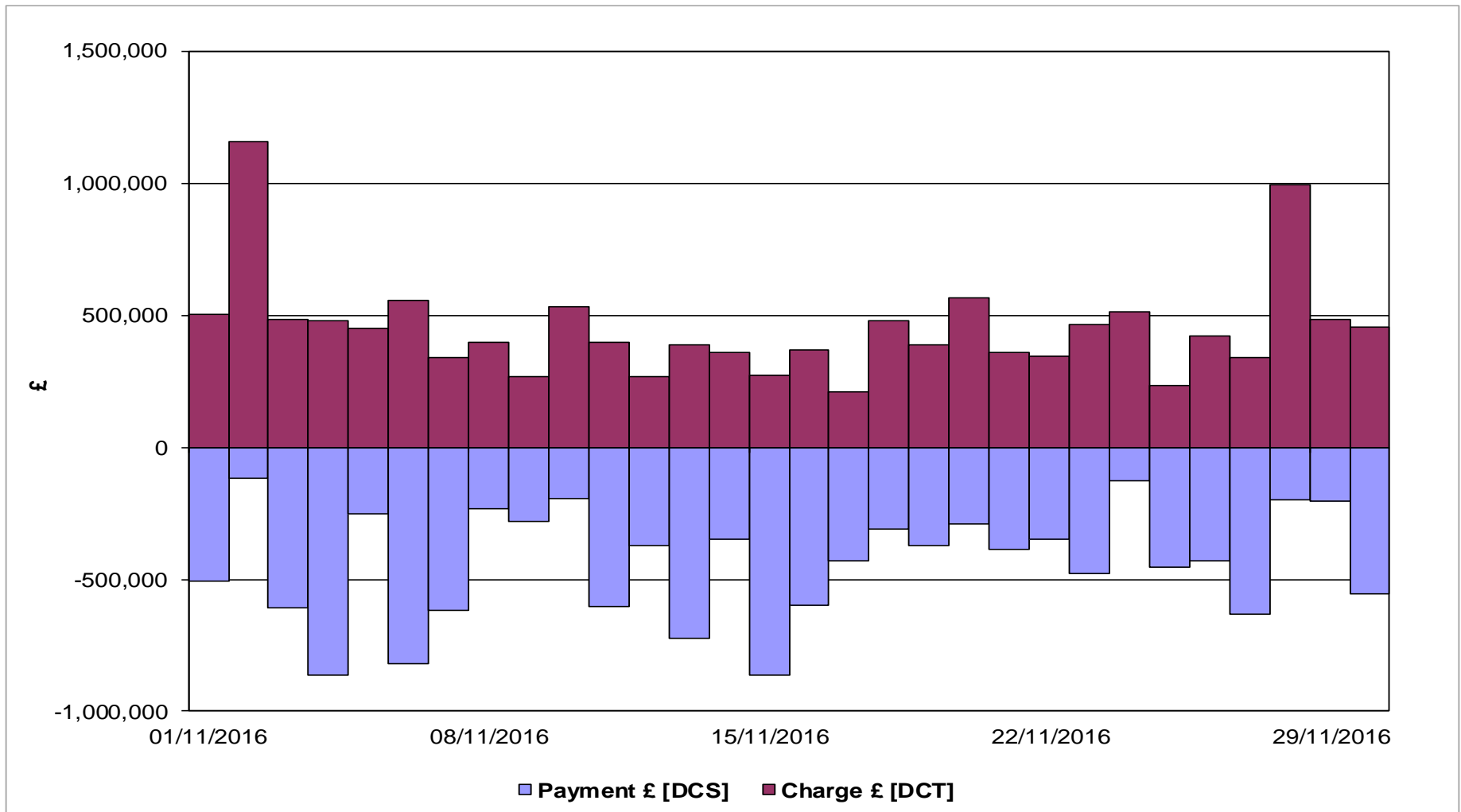
November 2016



Energy Balancing - Balancing Costs

Imbalance Payments / Charges

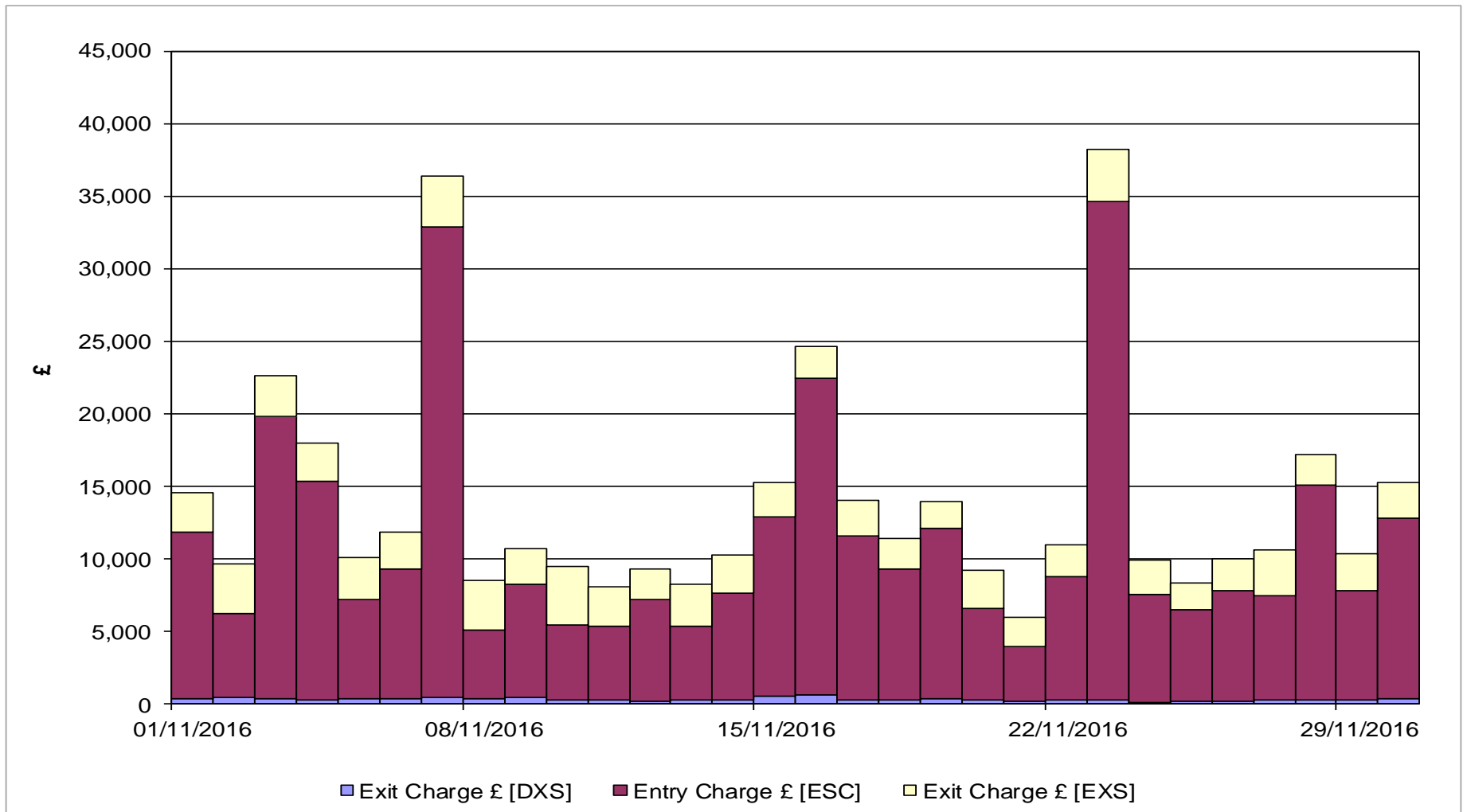
November 2016



Energy Balancing - Balancing Costs

Scheduling Charges

November 2016



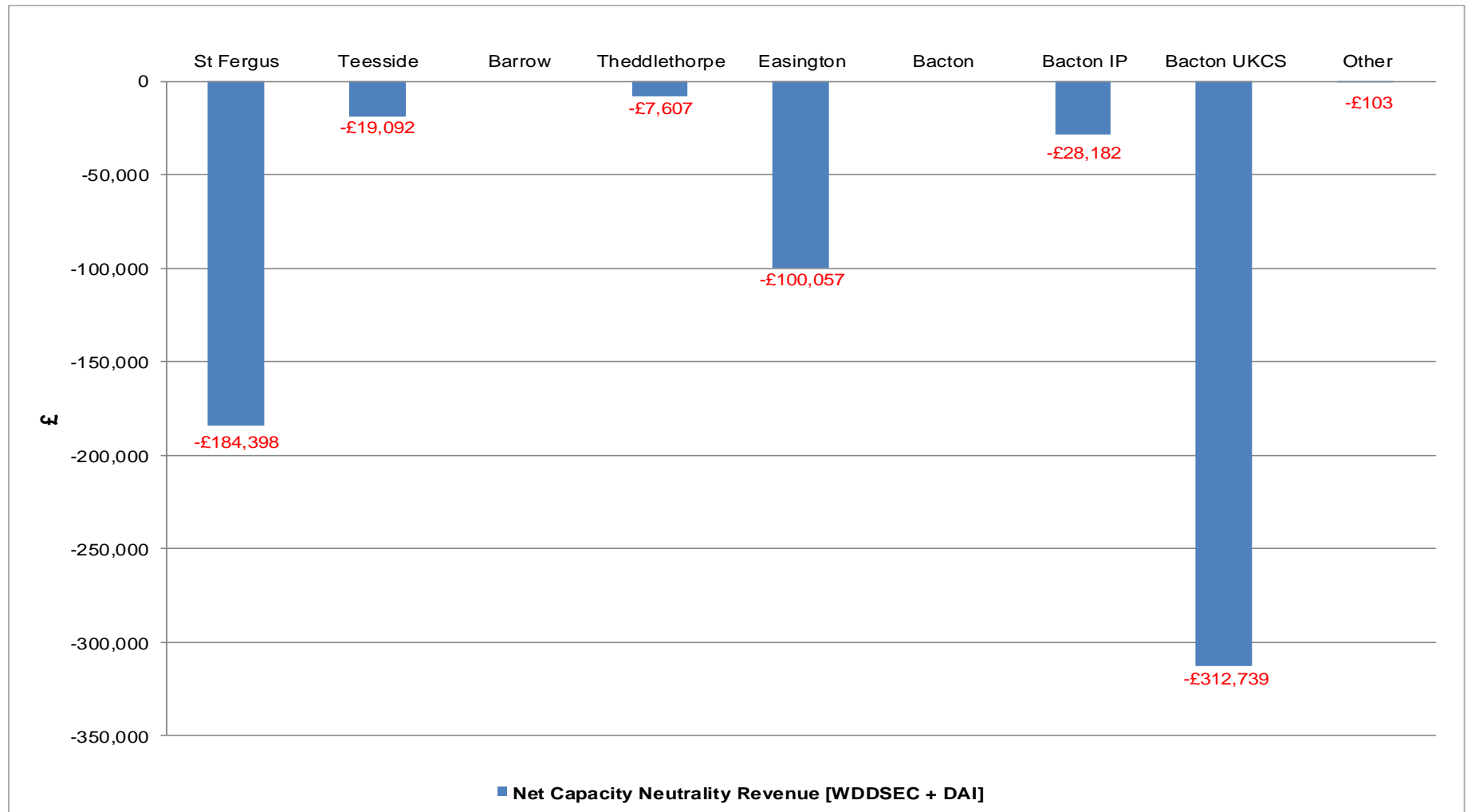
Capacity Neutrality Net Cost / Revenue

1st April 2016 to 31st December 2016

	Revenue/Costs
WDDSEC/DAI Entry Capacity Revenue	-£652,178
Total Entry Constraint Management Operational Costs	£0
Entry Capacity Overrun Revenue	-£988,686
Non-Obligated Sales Revenue (Entry only)	-£22,690
Revenue from Locational Sells and PRI Charges	-£14,249
Net Revenue	-£1,677,803

Net Capacity Neutrality Revenue

1st April 2016 to 31st December 2016



Capacity Neutrality

1st April 2016 to 31st December 2016

Month	Entry Cap Overrun Revenue	Non-obligated sales revenue (entry)	Month	Locational Sells and PRI charges revenue
Apr-16	-£110,246	-£148	Apr-16	£0
May-16	-£79,691	-£21	May-16	£0
Jun-16	-£193,290	-£188	Jun-16	£0
Jul-16	£-59,400	-£1,740	Jul-16	£0
Aug-16	-£78,428	-£32	Aug-16	£0
Sep-16	-£38,921	-£495	Sep-16	-£14,249
Oct-16	-£39,985	-£7,426	Oct-16	£0
Nov-16	-£388,711	-£7,426	Nov-16	£0
Dec-16	£0	-£4,894	Dec-16	£0
Jan-17			Jan-17	
Feb-17			Feb-17	
Mar-17			Mar-17	
Total	-£988,686 (FY16-17)	-£22,690 (FY16-17)	Total	£14,249 (FY16/17)