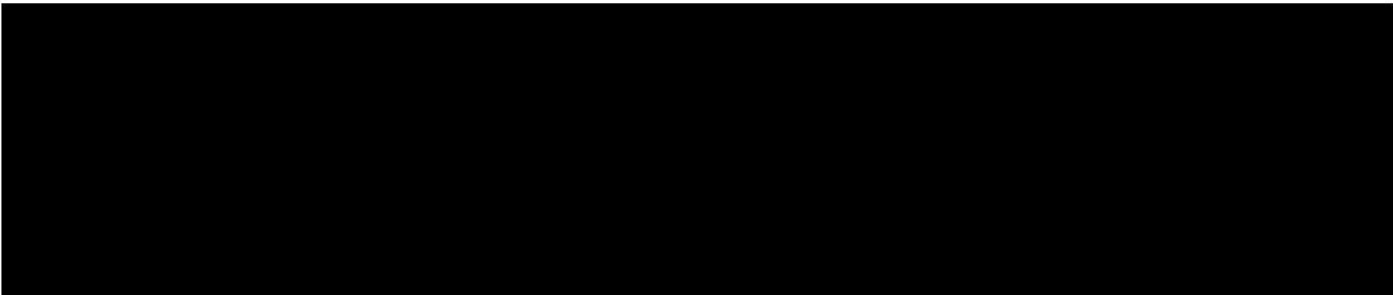


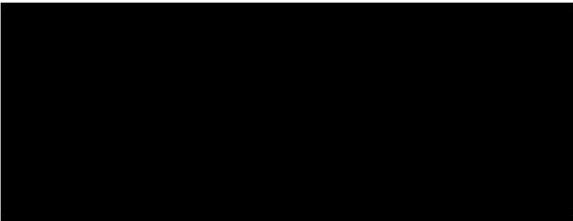
REPORT



King's Lynn Compressor Station Level 2 Schedules (Phase 2)

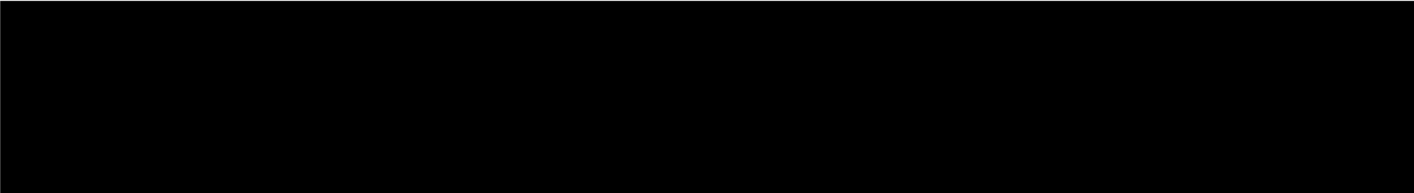
Prepared for: National Grid PLC

Prepared by:



Project Title: King's Lynn & Peterborough Compressor Station MCPD FEED Project
Document/Rev No: 203513C-001-PLG-0301/A
Date: June 2022

Rev	Date	Description	Issued by	Checked by	Approved by	Client Approval
A	27/05/2022	Issued for Client Review				
B	30/06/2022	Issued for Client Approval				



Project Title: King's Lynn & Peterborough Compressor Station MCPD FEED
 Project
 Document Title: King's Lynn Compressor Station Level 2 Schedules (Phase 2)
 Document/Rev No: 203513C-001-PLG-0301/B
 Date: June 2022

Contents

ABBREVIATIONS	4
HOLDS LIST	5
1.0 INTRODUCTION.....	6
1.1 General Background	6
1.2 Site Background	6
1.2.1 Peterborough Compressor Station	7
1.2.2 King's Lynn Compressor Station	7
1.3 MCPD Legislation Compliance Options	8
1.4 Document Objectives	8
1.5 Document Structure	8
2.0 DEVELOPMENT OPTIONS	9
2.1 New Build Options	9
2.1.1 Single Unit Options.....	9
2.1.2 Two Units Options	10
2.2 Retrofit Options	10
3.0 BASIS FOR SCHEDULES	12
4.0 LEVEL 2 SCHEDULES	14
5.0 REFERENCES.....	16
6.0 APPENDIX A.....	17
6.1 Option B1 Level 2 Schedule.....	17
6.2 Option B2 Level 2 Schedule.....	18
6.3 Option D Level 2 Schedule.....	19
6.4 Option E Level 2 Schedule.....	20
6.5 Option F Level 2 Schedule	21
6.6 Option 4A Level 2 Schedule.....	22
6.7 Option 4B Level 2 Schedule.....	23
6.8 Option 5 Level 2 Schedule	24

Project Title: King's Lynn & Peterborough Compressor Station MCPD FEED
Document Title: Project
Document/Rev No: King's Lynn Compressor Station Level 2 Schedules (Phase 2)
Date: 203513C-001-PLG-0301/B
June 2022

Figures & Tables

Figures

Figure 1-1 Peterborough & King's Lynn Compressor Stations	7
Figure 2-1 Option B New Build Compressor Location	9
Figure 2-2 Option 4 Two New Build Compressors.....	10
Figure 2-3 Retrofit Options Location	11

Tables

Table 4-1 : Overall Execution Durations	14
---	----

Project Title: King's Lynn & Peterborough Compressor Station MCPD FEED
Project
Document Title: King's Lynn Compressor Station Level 2 Schedules (Phase 2)
Document/Rev No: 203513C-001-PLG-0301/B
Date: June 2022

ABBREVIATIONS

CSRP	Control System Restricted Performance
DLE	Dry Low Emissions
EPC	Engineering, Procurement and Construction
ERP3	Emissions Reduction Phase 3
FEED	Front End Engineering Design
ITT	Invitation To Tender
LER	Local Equipment Room
MCPD	Medium Combustion Plant Directive
NTS	National Transmission System
PDS	Process Duty Specification
SCR	Selective Catalytic Reduction
SIMOPS	Simultaneous Operations
UCP	Unit Control Panel
UKPN	UK Power Networks
VSD	Variable Speed Drive

Project Title: King's Lynn & Peterborough Compressor Station MCPD FEED
Project
Document Title: King's Lynn Compressor Station Level 2 Schedules (Phase 2)
Document/Rev No: 203513C-001-PLG-0301/B
Date: June 2022

HOLDS LIST

HOLD	SECTION	DESCRIPTION
1	3.0	For Electric Driven VSD Compression option, the duration required for connection agreement with UKPN plus time required for a new supply from the 132 kV overhead lines

Project Title:	King's Lynn & Peterborough Compressor Station MCPD FEED Project
Document Title:	King's Lynn Compressor Station Level 2 Schedules (Phase 2)
Document/Rev No:	203513C-001-PLG-0301/B
Date:	June 2022

1.0 INTRODUCTION

1.1 General Background

The Medium Combustion Plant Directive (MCPD) requires that existing plant between 1 MW and 50 MW net thermal input must not exceed specified operational emission limit values or be taken out of service before 1 January 2030. This legislation impacts the Rolls Royce Avon driven compressor units on the gas National Transmission System (NTS) including units at King's Lynn and Peterborough Compressor Stations. Investment is required to ensure the capability, that the network requires, can be maintained beyond 1 January 2030. Investment may include various combinations of the following options and the investment must be assessed against network capability requirements predicted under various future energy scenarios to ensure the most cost-effective solution for end consumers.

- Upgrading non-compliant units to bring emissions within acceptable legislative limits;
- Replacement of non-compliant units with new low emissions compressors;
- Taking non-compliant units out of service;
- Restrict the performance of non-compliant units through control system restriction such that operational emissions are limited to within legislative limits;
- Limit the use of non-compliant units to a maximum of 500 hours per year under an emergency use derogation as defined in the MCPD legislation.

National Grid submitted a compressor emissions compliance strategy paper to Ofgem in 2019 within which compliance options for each site impacted by the incoming MCPD legislation were presented. Due to the uncertainty around the optimum solution for King's Lynn and Peterborough Compressor Stations it was agreed that further review of options would be conducted with the optimum solution for each site presented to Ofgem in two separate Final Options Selection Reports. Agreement on the optimum solution would then allow the project(s) to progress to the next phase of development prior to final funding allowances being agreed via an uncertainty mechanism under the RIIO regulatory framework.

1.2 Site Background

Peterborough and King's Lynn Compressor Stations are located in the East of England and their location on the NTS is shown on the schematic below. A brief outline of each site is provided in the section below to put the project scope into context.

Project Title: King's Lynn & Peterborough Compressor Station MCPD FEED
 Document Title: King's Lynn Compressor Station Level 2 Schedules (Phase 2)
 Document/Rev No: 203513C-001-PLG-0301/B
 Date: June 2022

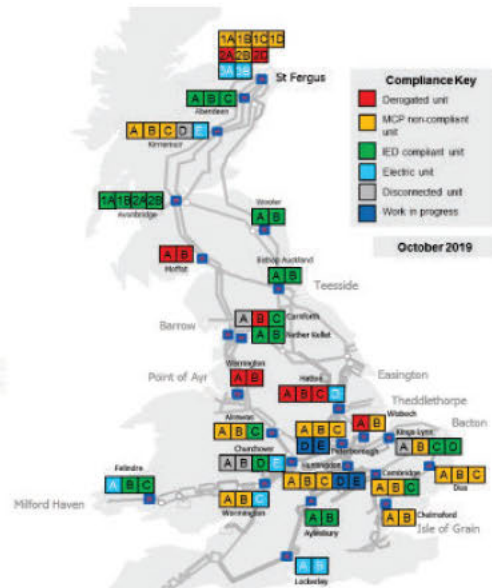
Figure 1-1 Peterborough & King's Lynn Compressor Stations

Peterborough

Unit A, B, C – RR Avon
 Unit D, E – Solar Titan 130

King's Lynn

Unit A – Decommissioned Avon
 Unit B – RR Avon
 Unit C, D – Siemens SGT400



1.2.1 Peterborough Compressor Station

The Peterborough Compression Station is used primarily for bulk transmission of gas to support demand and currently has:

- 3 off Rolls-Royce Avon gas driven compressors (A, B, C) existing that do not meet emissions limits;
- 2 off Solar Titan gas driven compressors (D, E) in process of being installed to become lead units as part of ERP3 project due for commissioning Q4 2022.
- Installation of 3rd Solar Titan was originally planned : Limited Construction has been done;

A, B and C compressors do not comply with MCPD (Medium Combustion Plant Directive). They will be used to provide resilience after commissioning of Units D, and E but need to be replaced/modified by 2030.

1.2.2 King's Lynn Compressor Station

The King's Lynn is a bi-directional compression station which is used to resolve supply/demand imbalance for SE England and currently has:

- 2 off Siemens SGT400 driven compressors (C, D) which operate as lead units;
- 1 off Rolls-Royce Avon Gas driven compressor (B) which operates as partial back-up to C and D
- 1 off Rolls-Royce Avon Gas driven compressor (A) which is disconnected and partially dismantled

Unit B compressor does not comply with MCPD and does not provide sufficient back-up capacity. Design capacity cannot be achieved with C and D unavailable.

Project Title: King's Lynn & Peterborough Compressor Station MCPD FEED
Project
Document Title: King's Lynn Compressor Station Level 2 Schedules (Phase 2)
Document/Rev No: 203513C-001-PLG-0301/B
Date: June 2022

1.3 MCPD Legislation Compliance Options

The technical options being considered to meet MCPD legislation at the existing compression stations are as follows:

RR Avon Retrofit Options

- a) Change out of Avon engine to a Dry Low Emissions (DLE) unit;
- b) Use of Control System Restricted Performance (CSR);
- c) Installation of a Selective Catalytic Reduction (SCR) unit.

New Build (Replacement of RR Avon) Options

- a) New Gas Turbine Driven Compressor;
- b) New Electric Variable Speed Drive (VSD) Compressor.

1.4 Document Objectives

Several potential alternative locations for siting of the new build compression units at King's Lynn have been considered and a preferred location has been selected (Ref. 4). In order to allow evaluation and screening of the preferred new build options and retrofit options, Level 2 project execution schedules have been developed for both sets of options.

The intention of the Level 2 schedules is to highlight any differences in overall project execution duration for the alternative options for use in the cost benefit analysis of the options and thus allow selection of a preferred MCPD option.

1.5 Document Structure

This document is structured as follows:

Section 2.0 presents and summarises options being considered.

Section 3.0 summarises the main assumptions and basis used for development of the schedules.

Section 4.0 presents the overall estimated project execution duration for each option.

Project Title: King's Lynn & Peterborough Compressor Station MCPD FEED
Project
Document Title: King's Lynn Compressor Station Level 2 Schedules (Phase 2)
Document/Rev No: 203513C-001-PLG-0301/B
Date: June 2022

2.0 DEVELOPMENT OPTIONS

2.1 New Build Options

For King's Lynn installation of one or two new units is being considered.

Beyond 2030, there may be an increase in the requirement for parallel running of compressors and National Grid would be exposed to considerable network constraint costs without a very high availability at King's Lynn. The installation of two new units allows the high compression availability to be achieved.

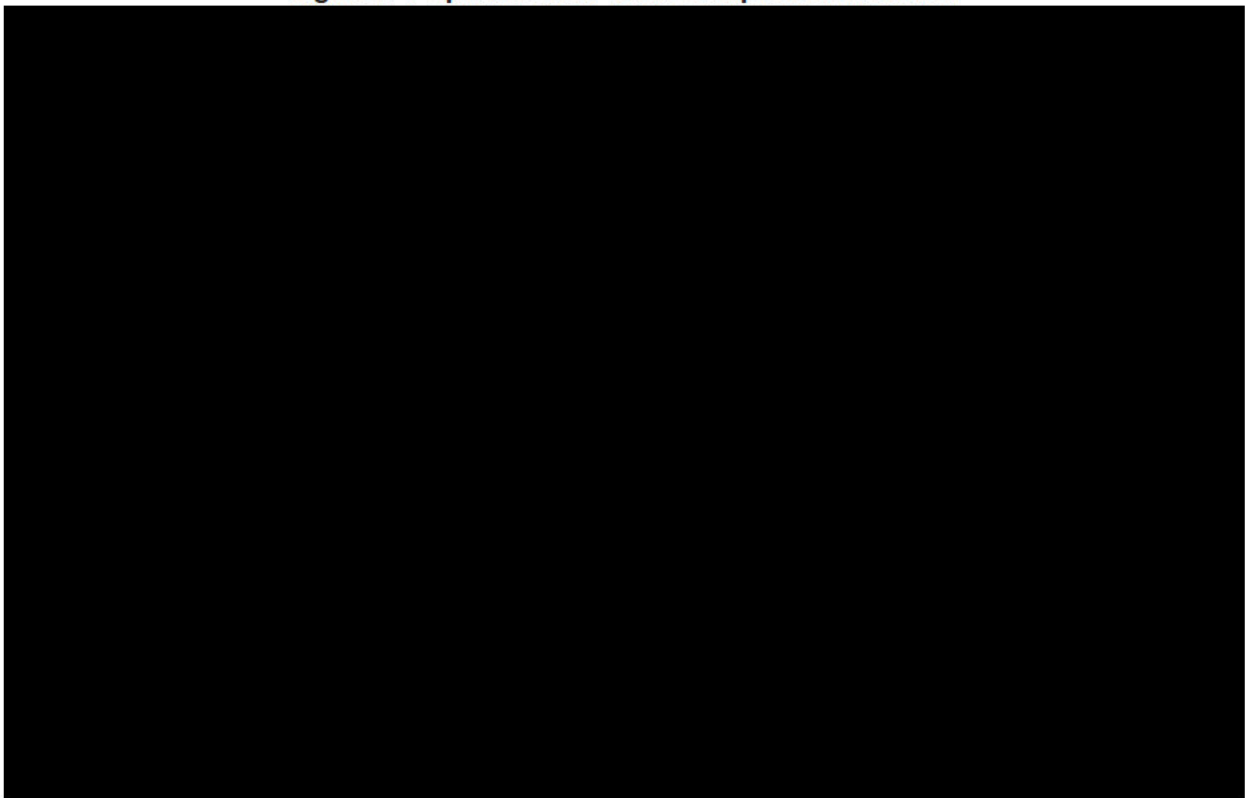
2.1.1 Single Unit Options

The preferred location of the single new build unit is the Redundant Plant Area 1 Plinths, Option B (Ref. 4). Option B requires extension of the site boundary, but the site security fence extension is well within the current National Grid land ownership boundary.

For Option B, two alternative compressor designs are being considered:

- a) New Gas Turbine Driven Compressor (Option B1);
- b) New Electric Variable Speed Drive (VSD) Compressor (Option B2);

Figure 2-1 Option B New Build Compressor Location



Project Title: King's Lynn & Peterborough Compressor Station MCPD FEED Project
Document Title: King's Lynn Compressor Station Level 2 Schedules (Phase 2)
Document/Rev No: 203513C-001-PLG-0301/B
Date: June 2022

2.1.2 Two Units Options

The combinations being considered for two unit options locations are as follows:

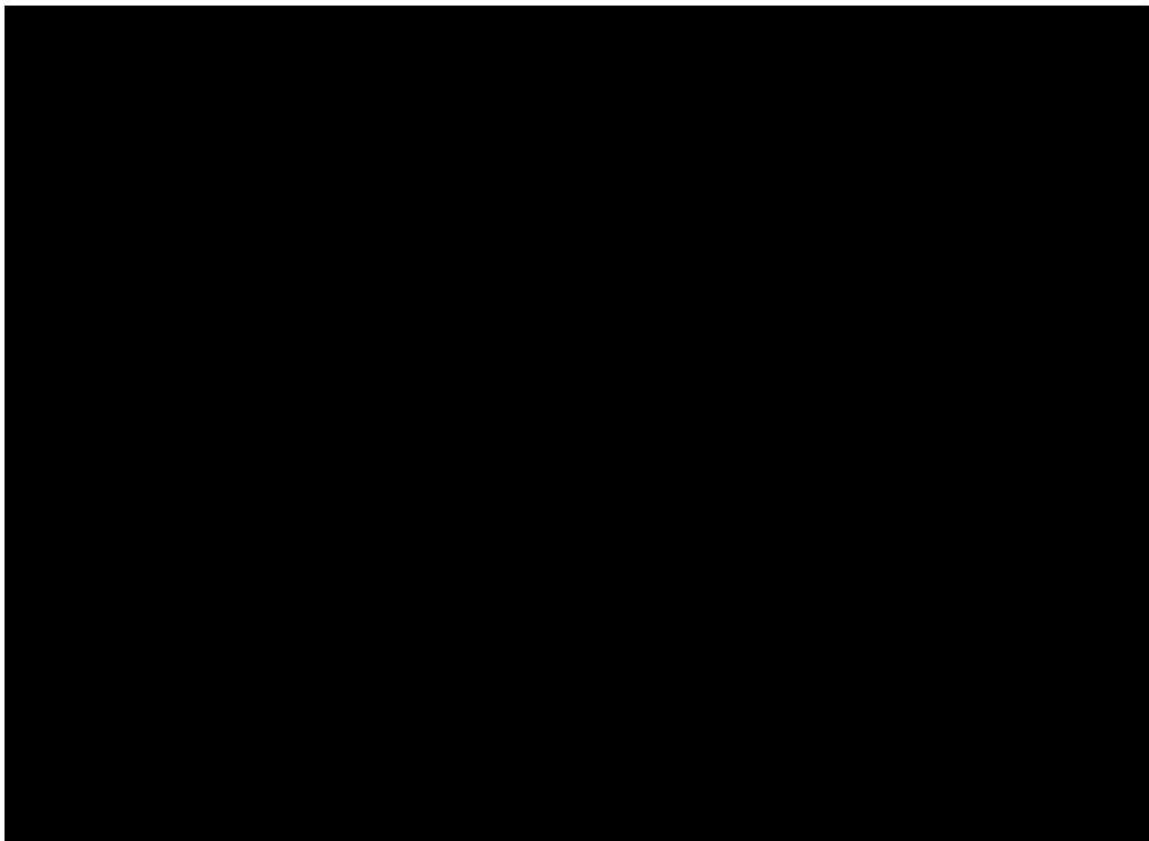
- Option 4: Two units Located on Redundant Plant Area 1 Plinths (Option B).
- Option 5: Hybrid option, i.e. one new build unit located Redundant Plant Area 1 Plinths (as per Option B) and Upgrade of Avon B (i.e. retrofit option).

As per the single unit options, two alternative compressor designs are being considered:

- a) New Gas Turbine Driven Compressors (Option 4A);
- b) New Electric Variable Speed Drive (VSD) Compressors (Option 4B);

Option 4 requires use of plot space plus construction outside of the current site security but it is within the current land ownership boundary.

Figure 2-2 Option 4 Two New Build Compressors



2.2 Retrofit Options

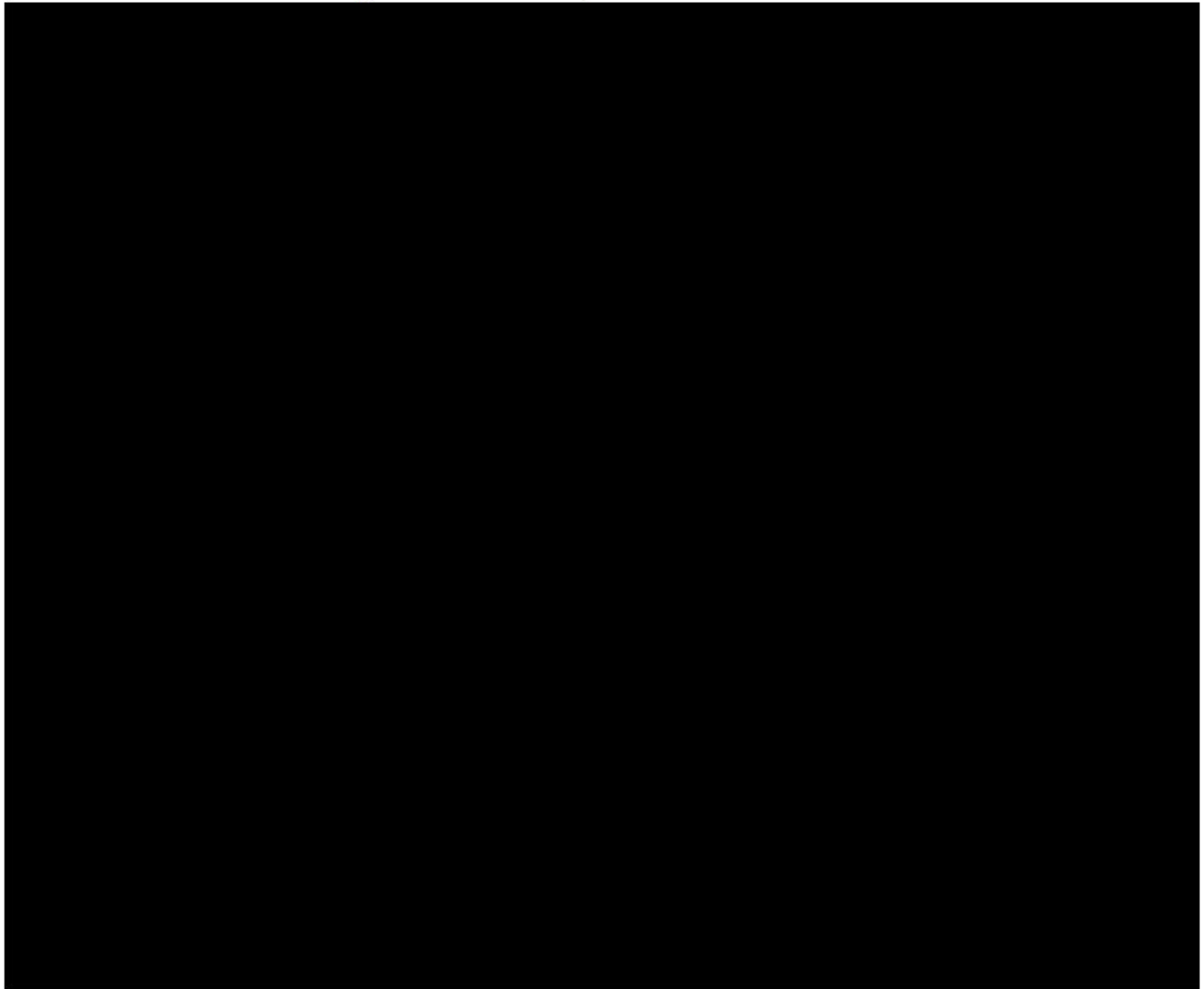
For the retrofit options, the existing Avon Unit B is upgraded as follows:

- Change out of Avon engine to a DLE unit (Option D);
- Use of CSRP (Option E);
- Installation of a SCR unit (Option F).

Project Title: King's Lynn & Peterborough Compressor Station MCPD FEED
Project
Document Title: King's Lynn Compressor Station Level 2 Schedules (Phase 2)
Document/Rev No: 203513C-001-PLG-0301/B
Date: June 2022

Figure 2-3 shows the location of Avon Unit B, plus the plot space required by the SCR facilities. For the DLE and CSRP options, no additional equipment is installed outside of the Avon B Compressor Building.

Figure 2-3 Retrofit Options Location



For the retrofit options, as well as the upgrades required to meet the MCPD requirements, additional 're-life' modifications / upgrades also need to be undertaken on the Avon B unit to ensure the requisite design life is achieved. These additional modifications include (Ref. 2):

- Overhaul of the Avon B Gas Compressor Section incl. installation of dry gas seals;
- Overhaul of the Lube Oil System (Electric Motors / Pumps);
- Replacement of Avon B Cab Lighting (ExD Rated LED);
- New Gas Turbine (Governor) & Compressor (UCP) Control System if not being performed as part of the MCPD option retrofit;
- Replacement of recycle valve and piping;
- Replacement of the inlet and outlet valve actuators.

Project Title:	King's Lynn & Peterborough Compressor Station MCPD FEED Project
Document Title:	King's Lynn Compressor Station Level 2 Schedules (Phase 2)
Document/Rev No:	203513C-001-PLG-0301/B
Date:	June 2022

3.0 BASIS FOR SCHEDULES

Refer to Reference 3 for a summary of the technical scope associated with each option.

The basis and the main assumptions used to develop the Level 1 schedules were as follows:

- The Kings Lynn Ofgem Re-Opener period is 31/12/2022 to 30/06/2023.
- A second Ofgem Re-Opener period of 2 months is required to agree funding allowances. This period will be after Execute (i.e. EPC) tenders have been received.
- At the conclusion of the Re-Opener period, an option will be selected for the King's Lynn MCPD project.
- The project will be executed in the following project phases:
 - Pre-FEED;
 - FEED;
 - Detailed Design;
 - Construction.
- The Pre-FEED can start before option approval / selection, i.e. before Ofgem Re-Opener period closure, if it is required in order to achieve project completion before the MCPD target date of 2030.
- The following National Grid internal approvals / governance periods are required:
 - 2 months between pre-FEED and FEED (F3 Sanction). This can occur in parallel to the FEED ITT period.
 - 2 month governance cycle (F4 sanction) immediately before the second Ofgem re-opener to confirm remaining funding allowances. This sanction process commences post receipt of Execute bids.
 - 2 months governance cycle at the end of construction/commissioning (T6 Sanction).
- The tendering periods required plus durations of these project phases for the new build options will be longer than the retrofit options given the significantly greater scope.
- Pre-FEED ITT and award activities are kicked off immediately following option selection being finalised, i.e. conclusion of Re-opener period.
- Activities that involve total shutdown of the compressor station can only occur during the period April – September. For the retrofit options, it is assumed that Unit B is also taken offline for upgrade / refurbishment only in this period too, to ensure that it is available during winter months etc,
- On site construction activities not requiring a total shutdown of the compressor station can occur all year round, i.e. constructions and operations SIMOPS is allowed.
- The delivery time for GT and EM VSD driven compression is 16 months (ex. Works) and this includes string test. The delivery time for the equipment and bulks required for the retrofit options will be significantly shorter. A duration of 6 months is assumed based on information provided by Reference 6 and previous project experience.

Project Title: King's Lynn & Peterborough Compressor Station MCPD FEED
Project
Document Title: King's Lynn Compressor Station Level 2 Schedules (Phase 2)
Document/Rev No: 203513C-001-PLG-0301/B
Date: June 2022

- Purchasing of equipment etc. will occur post FEED, i.e. no early investment. However, in order to reduce the overall procurement cycle for the new compression unit, it is assumed that the procurement specs / documents and compressor unit ITT technical bid evaluations will be performed during FEED. A period for vendor engagement will occur during FEED. Therefore, the purchase order can be placed soon after the Execute activities commence.
- For the retrofit options, the project execution activities for the MCPD facilities and 're-life' facilities will be done in parallel and managed by a single design and installation contractor.
- Adequate manpower is available to support the construction activities, i.e. there are no manpower restrictions. A 7 day working week / 12 hours a day is assumed for the preliminary schedules, This provides opportunity to increase site working hours if delays are experienced.
- Required permits and planning permissions are not on the critical path. It is assumed these activities will be performed in parallel to the engineering activities and will be managed such that they will not be on the critical path and thus will not impact the overall schedule.
- For Electric Driven VSD Compression options, the duration required for connection agreement with UKPN plus time required for a new supply from the 132 kV overhead lines is assumed to be 4 years (HOLD 1), based on preliminary indication received previously for the Peterborough site. It is assumed that UKPN installation activities will be undertaken in parallel to the onsite construction activities.
- Discussions with UKPN and design of the required new supply from the 132 kV overhead lines can occur prior to F4 Sanction. However, the formal agreement with UKPN cannot be concluded plus construction and installation of the new supply cannot commence prior to F4 sanction in order to minimise cost commitments prior to approval of funding allowance by Ofgem and F4 Sanction.
- National Grid's T2 Cyber delivery strategy does not permit compressor engine overhauls and cab refurbishments to be conducted at the same time as control system replacements due to overlap of working areas.

Project Title: King's Lynn & Peterborough Compressor Station MCPD FEED
 Project
 Document Title: King's Lynn Compressor Station Level 2 Schedules (Phase 2)
 Document/Rev No: 203513C-001-PLG-0301/B
 Date: June 2022

4.0 LEVEL 2 SCHEDULES

Representative Level 2 schedules are provided in Appendix A and Table 4-1 provides a summary of the estimated project completion dates. The schedules indicate that the project completion by 2030 can be achieved and that there is also some schedule float, except for Options B2. Retrofit options have more float and thus less schedule risk.

Table 4-1 : Overall Execution Durations

Option	Project Completion Date	Comments
Single Unit Options		
B1	1Q2029	Note 1
B2	1Q2030	Note 2
D	4Q2027	Note 3
E	4Q2027	Note 4
F	4Q2027	Note 5
Two Unit Options		
4A	1Q2029	Note 6
4B	1Q2030	Note 7
5	1Q2029	Note 8

Notes

- Two total site shutdowns are required, which can both be scheduled for April – September period. The first for cable trench extensions, which could occur during the period for new compressor civils works or during the period of new compressor installation. The second for hook-up of the new compressor.
- The installation of the new 132 kV incomer to site by the UKPN is on the critical path and pushes the project completion date out by one year compared to Option B1. Thus, potentially not meeting the MCPD target date. This represents a significant schedule risk, and the UKPN construction activities may need to be started earlier, if possible, (e.g. at the same time as the onsite FEED activities) to minimise this risk. For the preliminary level 2 schedule, it has been currently assumed that UKPN construction activities would not commence until funding is approved. Additionally, the schedule assumed that the pre-FEED activities commence before closure of the first Ofgem Re-Opener (i.e. option is approved) but this still does not allow the MCPD target date to be met.
- Two site shutdowns are required, one for the compressor overhaul and refurbishment activities and one for the DLE facilities installation and associated control system upgrades. It is assumed DLE technology will be tested / proven and commercially available by Q3 2023, before the commencement of pre-FEED / FEED project stages.
- Two site shutdowns are required, one for the compressor overhaul and refurbishment activities and one for the CSR facilities installation and associated control system upgrades.
- Two site shutdowns are required, one for the compressor overhaul and refurbishment activities and one for the SCR facilities installation and associated control system upgrades. The project completion date is the same as Options E and F, even though this option requires on site civils works to be undertaken prior to the SCR facilities installation. This is because all options are reliant on the April – September window for the total site shutdown.

Project Title: King's Lynn & Peterborough Compressor Station MCPD FEED
Project
Document Title: King's Lynn Compressor Station Level 2 Schedules (Phase 2)
Document/Rev No: 203513C-001-PLG-0301/B
Date: June 2022

6. Construction activities will take longer than Option B1 but the completion dates are very similar.
7. Completion date is the similar to Option B2 as it is driven by the installation of the new 132 kV incomer to site by the UKPN.
8. The overall completion date for hybrid option, i.e. one new build unit and upgrade of Avon B unit is the same as the single new build options as it is driven by the installation of the new build unit. This option is based on a new build GT driven unit plus DLE retrofit to the Avon B unit but it would be the same if the other retrofit options were considered instead.

Currently the schedule assumes that new build and retrofit scopes are treated as a single project. The upgrade of the Avon B unit is done in two phases / site shutdowns. During the first phase, the compressor overhaul and refurbishment activities are completed. During the second phase, the DLE facilities installation and associated control system upgrades are completed. The site shutdown required for the second phase coincides with that required for the new build compressor.

If an electric driven new build compressor is selected with a retrofit option, the overall completion date would be the same as Option B2.

Project Title: King's Lynn & Peterborough Compressor Station MCPD FEED
Project
Document Title: King's Lynn Compressor Station Level 2 Schedules (Phase 2)
Document/Rev No: 203513C-001-PLG-0301/B
Date: June 2022

5.0 REFERENCES

REFERENCES	
Ref 1	King's Lynn Compressor Station Study Basis of Design, doc. no. 203513C-001-RT-0008-0002.
Ref 2	King's Lynn Compressor Station Site Visit Report, doc. no. 203513C-001-RT-0500.
Ref 3	King's Lynn Compressor Station Cost Estimates (Phase 1 +/-30%), doc. no. 203513C-001-RT-0301.
Ref 4	King's Lynn Compressor Station Option Review Report (Phase 1), doc. no. 203513C-001-RT-0503.
Ref 5	King's Lynn Compressor Station Level 1 Schedules (Phase 1), doc/ no. 203513C-001-PLG-0300.
Ref 6	Avon DLE and Avon Control Systems Restricted Performance (CSRP) Provisional Innovation Study Outputs by National Grid, dated June 2021

Project Title: King's Lynn & Peterborough Compressor Station MCPD FEED
Document Title: King's Lynn Compressor Station Level 2 Schedules (Phase 2)
Document/Rev No: 203513C-001-PLG-0301/B
Date: June 2022

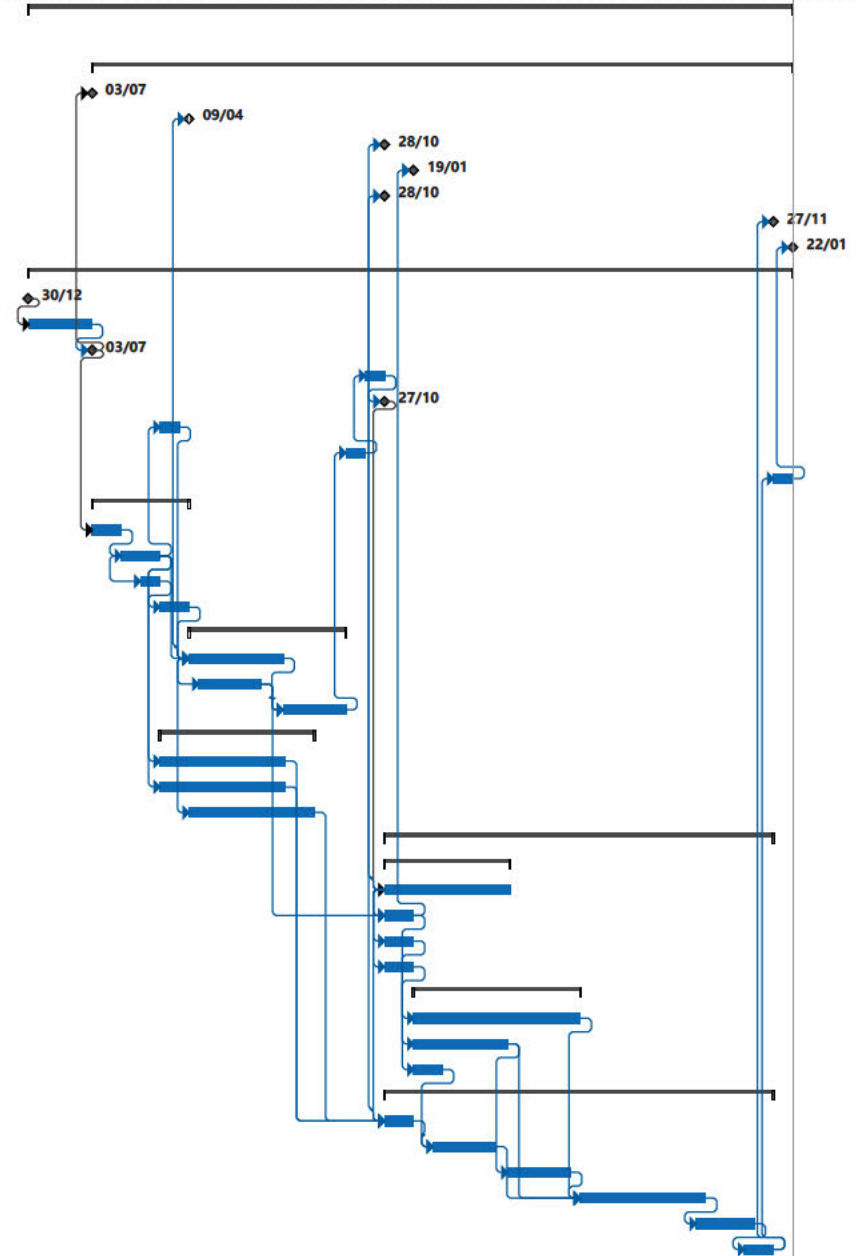
6.0 APPENDIX A

6.1 Option B1 Level 2 Schedule



J25231 NG MCPD
King's Option B1 Ex

ID	Task Name	Duration	Start	Finish	Predecessors	2022	2023	2024	2025	2026	2027	2028	2029
1	Option B1 GT Driven Compression Machinery Equipment Located on Redundant Plant Area 1 Plinths	316.4 wks	Fri 30/12/22	Mon 22/01/29									
2	Milestones	290 wks	Mon 03/07/23	Mon 22/01/29									
3	NG Option Selection Complete	0 wks	Mon 03/07/23	Mon 03/07/23	13								
4	Commence FEED	0 wks	Tue 09/04/24	Tue 09/04/24	25SS								
5	Commence Execute	0 wks	Tue 28/10/25	Tue 28/10/25	34SS								
6	Place Oder for Compression Train	0 wks	Mon 19/01/26	Mon 19/01/26	35								
7	Site Mobilisation	0 wks	Tue 28/10/25	Tue 28/10/25	43SS								
8	Commissioning Complete	0 wks	Mon 27/11/28	Mon 27/11/28	48								
9	Project Complete	0 wks	Mon 22/01/29	Mon 22/01/29	18								
10	Ofgem Approvals & National Grid Governance	316.4 wks	Fri 30/12/22	Mon 22/01/29									
11	Select Study Complete	0 wks	Fri 30/12/22	Fri 30/12/22									
12	Ofgem Re-opener Window #1 Kings Lynn	26 wks	Mon 02/01/23	Fri 30/06/23	11								
13	Option Approved	0 wks	Mon 03/07/23	Mon 03/07/23	12FS+1 day								
14	Ofgem Re-opener Window #2 Kings Lynn	8 wks	Tue 02/09/25	Mon 27/10/25	17								
15	Funding Approved	0 wks	Mon 27/10/25	Mon 27/10/25	14								
16	National Grid F3 Sanction (FEED)	8 wks	Tue 16/01/24	Mon 11/03/24	21								
17	National Grid F4 Sanction (EPC)	8 wks	Tue 08/07/25	Mon 01/09/25	27								
18	National Grid T6 Sanction (Project Completion)	8 wks	Tue 28/11/28	Mon 22/01/29	48								
19	Pre-FEED	40 wks	Tue 04/07/23	Mon 08/04/24									
20	Pre-FEED Study ITT & Award	12 wks	Tue 04/07/23	Mon 25/09/23	13								
21	Pre-FEED Study	16 wks	Tue 26/09/23	Mon 15/01/24	20								
22	FEED ITT Package	8 wks	Tue 21/11/23	Mon 15/01/24	21SS+8 wks								
23	FEED ITT & Award	12 wks	Tue 16/01/24	Mon 08/04/24	22								
24	Define	65 wks	Tue 09/04/24	Mon 07/07/25									
25	FEED Study	39 wks	Tue 09/04/24	Mon 06/01/25	23,21,16								
26	Vendor Engagement	26 wks	Tue 07/05/24	Mon 04/11/24	25SS+4 wks								
27	Execute ITT & Award	26 wks	Tue 07/01/25	Mon 07/07/25	25,26								
28	Consents	64 wks	Tue 16/01/24	Mon 07/04/25									
29	Environmental Assessment	52 wks	Tue 16/01/24	Mon 13/01/25	21								
30	Planing Consents and Approvals	52 wks	Tue 16/01/24	Mon 13/01/25	21								
31	Construction Camp Lease Agreement	52 wks	Tue 09/04/24	Mon 07/04/25	25SS								
32	Execute	161 wks	Tue 28/10/25	Mon 27/11/28									
33	Engineering	52 wks	Tue 28/10/25	Mon 26/10/26									
34	Detailed Engineering	52 wks	Tue 28/10/25	Mon 26/10/26	15								
35	Compressor Purchase Order Placement	12 wks	Tue 28/10/25	Mon 19/01/26	34SS,26								
36	Piping / Instruments / Electrical / Structural Bulks Orders Placement	12 wks	Tue 28/10/25	Mon 19/01/26	34SS								
37	Civils Bulks Orders Placement	12 wks	Tue 28/10/25	Mon 19/01/26	34SS								
38	Procurement	69 wks	Tue 20/01/26	Mon 17/05/27									
39	Compression Train and Associated Equipment	69 wks	Tue 20/01/26	Mon 17/05/27	35								
40	Piping / Instruments / Electrical /Structural Bulks	39 wks	Tue 20/01/26	Mon 19/10/26	36								
41	Civils Bulks	12 wks	Tue 20/01/26	Mon 13/04/26	37								
42	Construction	161 wks	Tue 28/10/25	Mon 27/11/28									
43	Site Set-Up & Mobilisation	12 wks	Tue 28/10/25	Mon 19/01/26	29,30,31,34SS								
44	Civil Work for New Compressor (Demolition & Construction)	26 wks	Tue 17/03/26	Mon 14/09/26	43,41FS-4 wks								
45	Pre-Fabrication of Piping Spools / Structures	26 wks	Tue 20/10/26	Mon 19/04/27	40								
46	Install New Compressor	52 wks	Tue 18/05/27	Mon 15/05/28	44,39,45,40FS-1								
47	Site Shutdown for Hook-up of New Compressor	24 wks	Tue 18/04/28	Mon 02/10/28	46FS-4 wks								
48	Pre-comm and Commissioning of New Compressor	12 wks	Tue 05/09/28	Mon 27/11/28	47FS-4 wks								



Project: J25231 NG MCPD King
Date: Wed 29/06/22

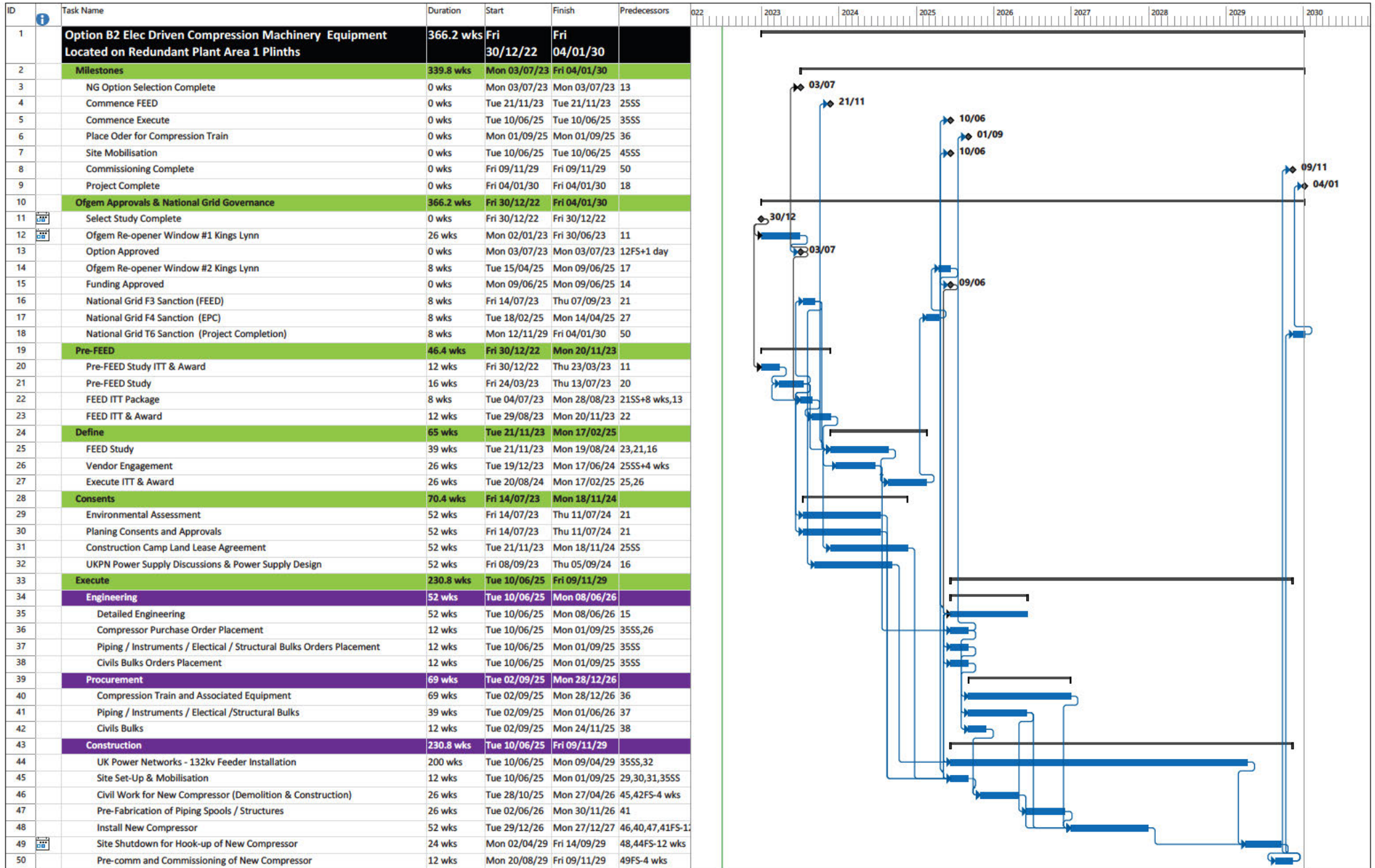
Task █ Split █ Milestone ◆ Summary ▬ Progress ▬

Project Title: King's Lynn & Peterborough Compressor Station MCPD FEED
Document Title: King's Lynn Compressor Station Level 2 Schedules (Phase 2)
Document/Rev No: 203513C-001-PLG-0301/B
Date: June 2022

6.2 Option B2 Level 2 Schedule



J25231 NG MCPD
King's Option B2 Ex



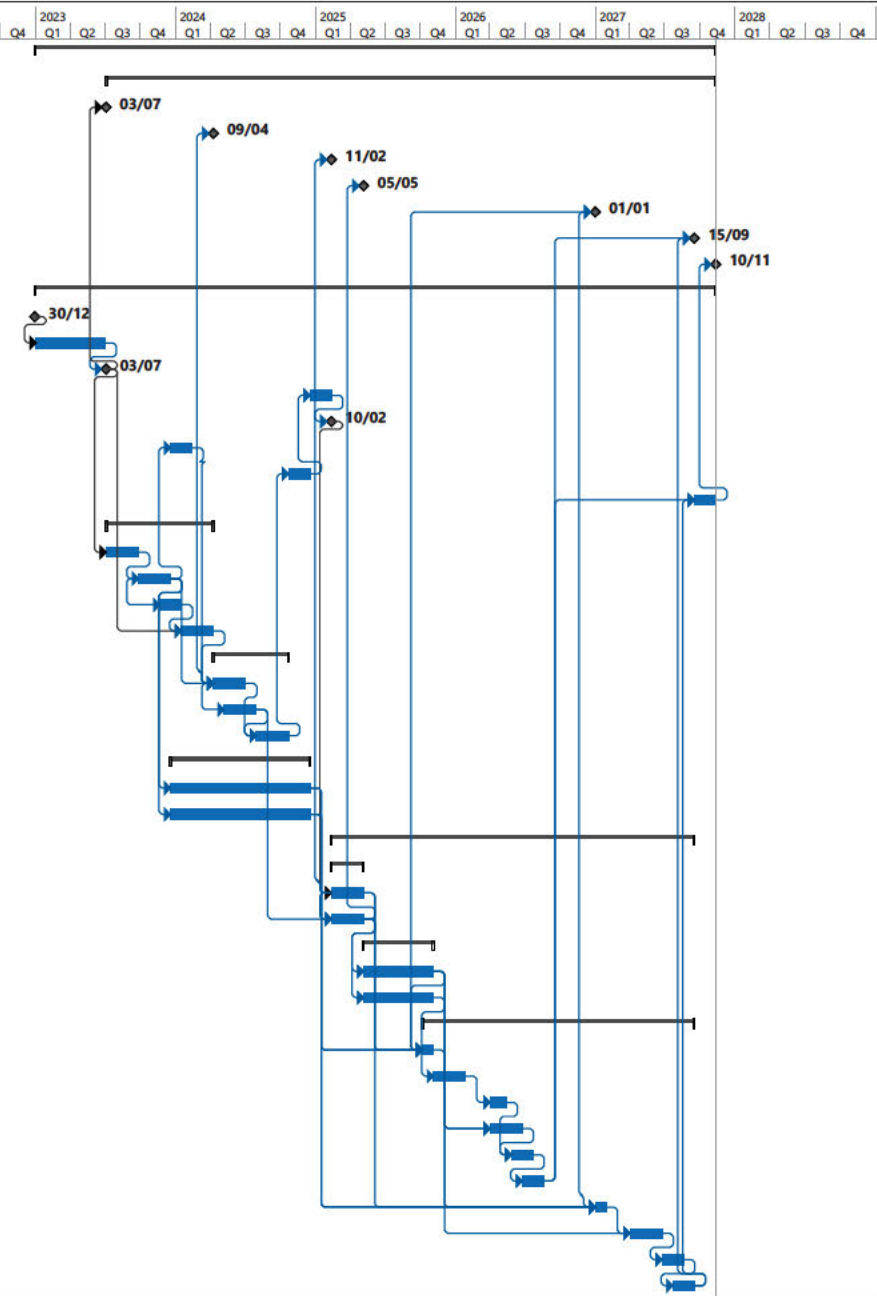
Project Title: King's Lynn & Peterborough Compressor Station MCPD FEED
Document Title: King's Lynn Compressor Station Level 2 Schedules (Phase 2)
Document/Rev No: 203513C-001-PLG-0301/B
Date: June 2022

6.3 Option D Level 2 Schedule



J25231 NG MCPD
King's Option D Exe

ID	Task Name	Duration	Start	Finish	Predecessors	2022				2023				2024				2025				2026				2027				2028			
						Q1	Q2	Q3	Q4	Q1	Q2	Q3	Q4	Q1	Q2	Q3	Q4	Q1	Q2	Q3	Q4	Q1	Q2	Q3	Q4	Q1	Q2	Q3	Q4	Q1	Q2	Q3	Q4
1	Option D DLE Engine Retrofit to Existing Avon B Unit	253.8 wks	Fri 30/12/22	Wed 10/11/27																													
2	Milestones	227.4 wks	Mon 03/07/23	Wed 10/11/27																													
3	NG Option Selection Complete	0 wks	Mon 03/07/23	Mon 03/07/23	13																												
4	Commence FEED	0 wks	Tue 09/04/24	Tue 09/04/24	25SS																												
5	Commence Execute	0 wks	Tue 11/02/25	Tue 11/02/25	33SS																												
6	Place Order for Compression Train	0 wks	Mon 05/05/25	Mon 05/05/25	34																												
7	Site Mobilisation	0 wks	Fri 01/01/27	Fri 01/01/27	39SS,45SS																												
8	Commissioning Complete	0 wks	Wed 15/09/27	Wed 15/09/27	44,48																												
9	Project Complete	0 wks	Wed 10/11/27	Wed 10/11/27	18																												
10	Ofgem Approvals & National Grid Governance	253.8 wks	Fri 30/12/22	Wed 10/11/27																													
11	Select Study Complete	0 wks	Fri 30/12/22	Fri 30/12/22																													
12	Ofgem Re-opener Window #1 King's Lynn	26 wks	Mon 02/01/23	Fri 30/06/23	11																												
13	Option Approved	0 wks	Mon 03/07/23	Mon 03/07/23	12FS+1 day																												
14	Ofgem Re-opener Window #2 King's Lynn	8 wks	Tue 17/12/24	Mon 10/02/25	17																												
15	Funding Approved	0 wks	Mon 10/02/25	Mon 10/02/25	14																												
16	National Grid F3 Sanction (FEED)	8 wks	Tue 19/12/23	Mon 12/02/24	21																												
17	National Grid F4 Sanction (EPC)	8 wks	Tue 22/10/24	Mon 16/12/24	27																												
18	National Grid T6 Sanction (Project Completion)	8 wks	Thu 16/09/27	Wed 10/11/27	44,48																												
19	Pre-FEED	40 wks	Tue 04/07/23	Mon 08/04/24																													
20	Pre-FEED Study ITT & Award	12 wks	Tue 04/07/23	Mon 25/09/23	13																												
21	Pre-FEED Study	12 wks	Tue 26/09/23	Mon 18/12/23	20																												
22	FEED ITT Package	8 wks	Tue 21/11/23	Mon 15/01/24	21SS+8 wks																												
23	FEED ITT & Award	12 wks	Tue 16/01/24	Mon 08/04/24	22,13FS+2 da																												
24	Define	28 wks	Tue 09/04/24	Mon 21/10/24																													
25	FEED Study	12 wks	Tue 09/04/24	Mon 01/07/24	23,21,16																												
26	Vendor Engagement	12 wks	Tue 07/05/24	Mon 29/07/24	25SS+4 wks																												
27	Execute ITT & Award	12 wks	Tue 30/07/24	Mon 21/10/24	25,26																												
28	Consents	52 wks	Tue 19/12/23	Mon 16/12/24																													
29	Environmental Assessment	52 wks	Tue 19/12/23	Mon 16/12/24	21																												
30	Plan Consents and Approvals	52 wks	Tue 19/12/23	Mon 16/12/24	21																												
31	Execute	135.4 wks	Tue 11/02/25	Wed 15/09/27																													
32	Engineering	12 wks	Tue 11/02/25	Mon 05/05/25																													
33	Detailed Engineering	12 wks	Tue 11/02/25	Mon 05/05/25	15																												
34	Purchase Orders Placement	12 wks	Tue 11/02/25	Mon 05/05/25	33SS,26																												
35	Procurement	26 wks	Tue 06/05/25	Mon 03/11/25																													
36	Avon DLE Engine & Compressor Refurbishment Items	26 wks	Tue 06/05/25	Mon 03/11/25	34																												
37	Piping Bunks	26 wks	Tue 06/05/25	Mon 03/11/25	34																												
38	Construction	101.4 wks	Tue 07/10/25	Wed 15/09/27																													
39	Site Mobilisation for Compressor Refurbishment	4 wks	Tue 07/10/25	Mon 03/11/25	33,29,30,36F																												
40	Pre-Fabrication of Piping Spools	12 wks	Tue 04/11/25	Mon 26/01/26	37																												
41	Piping and Valves Installation	6 wks	Wed 01/04/26	Tue 12/05/26	40																												
42	Avon B Compressor Overhaul & Refurbishment	12 wks	Wed 01/04/26	Tue 23/06/26	36,39																												
43	Site Shutdown for Hook-up of Refurbished Compressor	8 wks	Wed 27/05/26	Tue 21/07/26	42FS-4 wks,4																												
44	Pre-comm and Commissioning of Refurbished Compressor	8 wks	Wed 24/06/26	Tue 18/08/26	43FS-4 wks																												
45	Site Mobilisation for Compressor Upgrade	4 wks	Fri 01/01/27	Thu 28/01/27	33,29,30,36																												
46	Avon B DLE Retrofit & Controls System Upgrades	12 wks	Thu 01/04/27	Wed 23/06/27	36,45																												
47	Site Shutdown for Hook-up of Upgraded Compressor	8 wks	Thu 24/06/27	Wed 18/08/27	46																												
48	Pre-comm and Commissioning of Upgraded Compressor	8 wks	Thu 22/07/27	Wed 15/09/27	47FS-4 wks																												



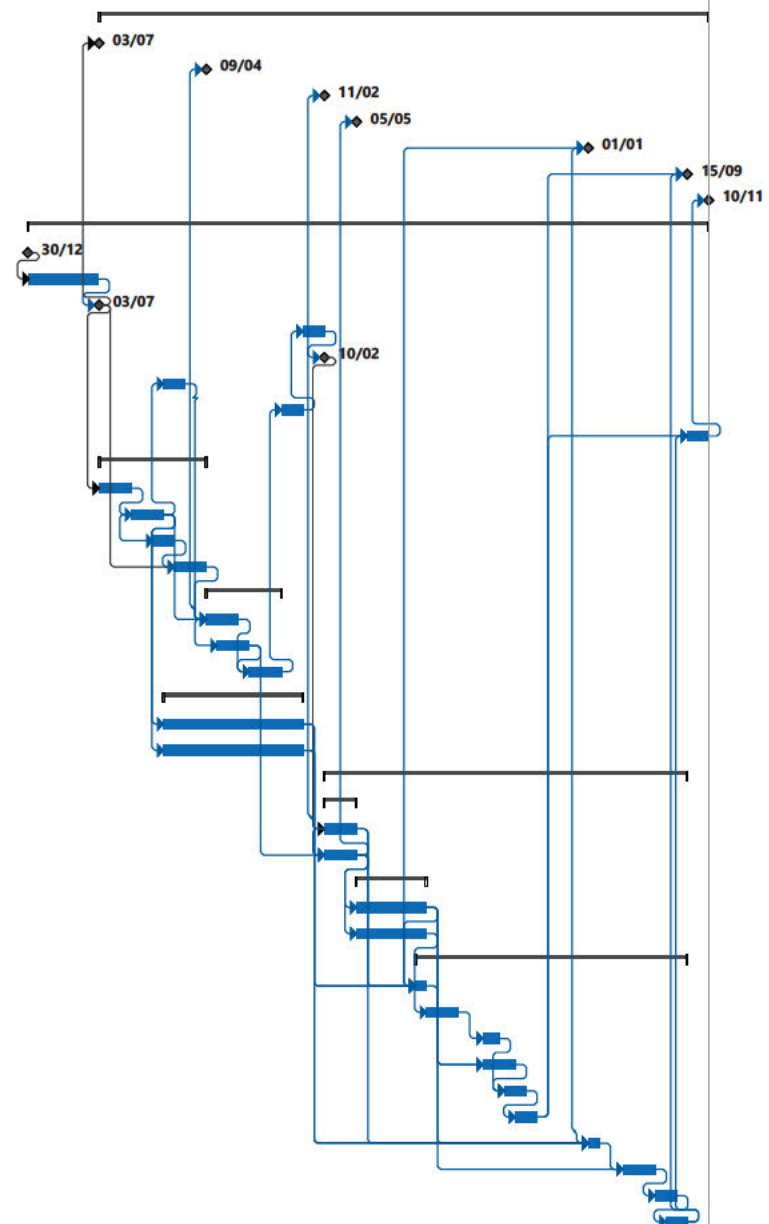
Project Title: King's Lynn & Peterborough Compressor Station MCPD FEED
Document Title: King's Lynn Compressor Station Level 2 Schedules (Phase 2)
Document/Rev No: 203513C-001-PLG-0301/B
Date: June 2022

6.4 Option E Level 2 Schedule



J25231 NG MCPD
King's Option E Exe

ID	Task Name	Duration	Start	Finish	Predecessors	2022				2023				2024				2025				2026				2027				2028							
						Q1	Q2	Q3	Q4	Q1	Q2	Q3	Q4	Q1	Q2	Q3	Q4	Q1	Q2	Q3	Q4	Q1	Q2	Q3	Q4	Q1	Q2	Q3	Q4	Q1	Q2	Q3	Q4				
1	Option E: CRSP Retrofit to Existing Avon B Unit	253.8 wks	Fri 30/12/22	Wed 10/11/27																																	
2	Milestones	227.4 wks	Mon 03/07/23	Wed 10/11/27																																	
3	NG Option Selection Complete	0 wks	Mon 03/07/23	Mon 03/07/23	13																																
4	Commence FEED	0 wks	Tue 09/04/24	Tue 09/04/24	25SS																																
5	Commence Execute	0 wks	Tue 11/02/25	Tue 11/02/25	33SS																																
6	Place Order for Compression Train	0 wks	Mon 05/05/25	Mon 05/05/25	34																																
7	Site Mobilisation	0 wks	Fri 01/01/27	Fri 01/01/27	39SS,45SS																																
8	Commissioning Complete	0 wks	Wed 15/09/27	Wed 15/09/27	44,48																																
9	Project Complete	0 wks	Wed 10/11/27	Wed 10/11/27	18																																
10	Ofgem Approvals & National Grid Governance	253.8 wks	Fri 30/12/22	Wed 10/11/27																																	
11	Select Study Complete	0 wks	Fri 30/12/22	Fri 30/12/22																																	
12	Ofgem Re-opener Window #1 King's Lynn	26 wks	Mon 02/01/23	Fri 30/06/23	11																																
13	Option Approved	0 wks	Mon 03/07/23	Mon 03/07/23	12FS+1 day																																
14	Ofgem Re-opener Window #2 King's Lynn	8 wks	Tue 17/12/24	Mon 10/02/25	17																																
15	Funding Approved	0 wks	Mon 10/02/25	Mon 10/02/25	14																																
16	National Grid F3 Sanction (FEED)	8 wks	Tue 19/12/23	Mon 12/02/24	21																																
17	National Grid F4 Sanction (EPC)	8 wks	Tue 22/10/24	Mon 16/12/24	27																																
18	National Grid T6 Sanction (Project Completion)	8 wks	Thu 16/09/27	Wed 10/11/27	44,48																																
19	Pre-FEED	40 wks	Tue 04/07/23	Mon 08/04/24																																	
20	Pre-FEED Study ITT & Award	12 wks	Tue 04/07/23	Mon 25/09/23	13																																
21	Pre-FEED Study	12 wks	Tue 26/09/23	Mon 18/12/23	20																																
22	FEED ITT Package	8 wks	Tue 21/11/23	Mon 15/01/24	21SS+8 wks																																
23	FEED ITT & Award	12 wks	Tue 16/01/24	Mon 08/04/24	22,13FS+2 da																																
24	Define	28 wks	Tue 09/04/24	Mon 21/10/24																																	
25	FEED Study	12 wks	Tue 09/04/24	Mon 01/07/24	23,21,16																																
26	Vendor Engagement	12 wks	Tue 07/05/24	Mon 29/07/24	25SS+4 wks																																
27	Execute ITT & Award	12 wks	Tue 30/07/24	Mon 21/10/24	25,26																																
28	Consents	52 wks	Tue 19/12/23	Mon 16/12/24																																	
29	Environmental Assessment	52 wks	Tue 19/12/23	Mon 16/12/24	21																																
30	Plan Consents and Approvals	52 wks	Tue 19/12/23	Mon 16/12/24	21																																
31	Execute	135.4 wks	Tue 11/02/25	Wed 15/09/27																																	
32	Engineering	12 wks	Tue 11/02/25	Mon 05/05/25																																	
33	Detailed Engineering	12 wks	Tue 11/02/25	Mon 05/05/25	15																																
34	Purchase Orders Placement	12 wks	Tue 11/02/25	Mon 05/05/25	33SS,26																																
35	Procurement	26 wks	Tue 06/05/25	Mon 03/11/25																																	
36	Avon CRSP & Compressor Refurbishment Items	26 wks	Tue 06/05/25	Mon 03/11/25	34																																
37	Piping Bunks	26 wks	Tue 06/05/25	Mon 03/11/25	34																																
38	Construction	101.4 wks	Tue 07/10/25	Wed 15/09/27																																	
39	Site Mobilisation for Compressor Refurbishment	4 wks	Tue 07/10/25	Mon 03/11/25	33,29,30,36F																																
40	Pre-Fabrication of Piping Spools	12 wks	Tue 04/11/25	Mon 26/01/26	37																																
41	Piping and Valves Installation	6 wks	Wed 01/04/26	Tue 12/05/26	40																																
42	Avon B Compressor Overhaul & Refurbishment	12 wks	Wed 01/04/26	Tue 23/06/26	36,39																																
43	Site Shutdown for Hook-up of Refurbished Compressor	8 wks	Wed 27/05/26	Tue 21/07/26	42FS-4 wks,4																																
44	Pre-comm and Commissioning of Refurbished Compressor	8 wks	Wed 24/06/26	Tue 18/08/26	43FS-4 wks																																
45	Site Mobilisation for Compressor Upgrade	4 wks	Fri 01/01/27	Thu 28/01/27	33,29,30,36																																
46	Avon B CRSP Retrofit & Control Sytem Upgrades	12 wks	Thu 01/04/27	Wed 23/06/27	36,45																																
47	Site Shutdown for Hook-up of Upgraded Compressor	8 wks	Thu 24/06/27	Wed 18/08/27	46																																
48	Pre-comm and Commissioning of Upgraded Compressor	8 wks	Thu 22/07/27	Wed 15/09/27	47FS-4 wks																																



Project Title: King's Lynn & Peterborough Compressor Station MCPD FEED
Document Title: King's Lynn Compressor Station Level 2 Schedules (Phase 2)
Document/Rev No: 203513C-001-PLG-0301/B
Date: June 2022

6.5 Option F Level 2 Schedule



J25231 NG MCPD
King's Option F Exe

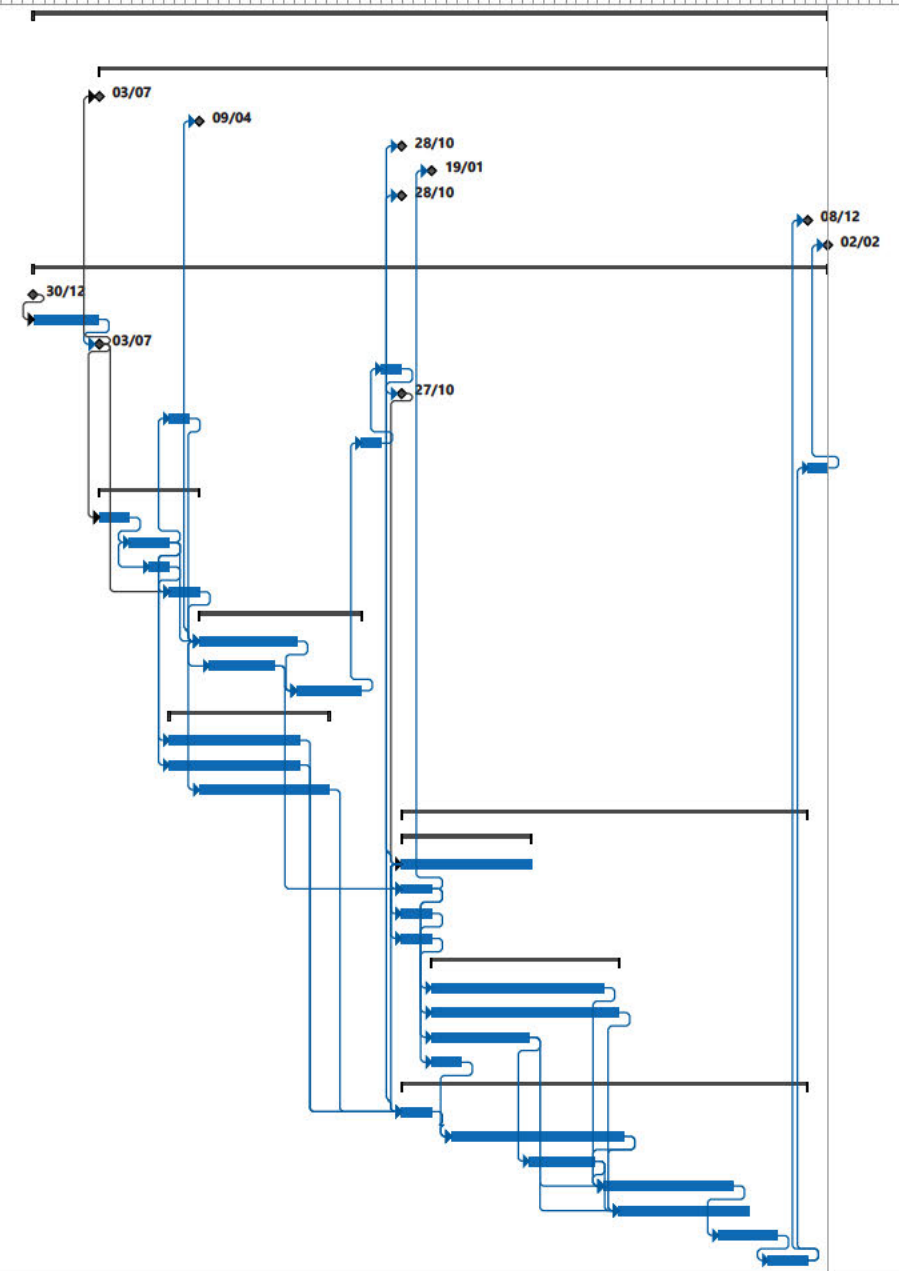
Project Title: King's Lynn & Peterborough Compressor Station MCPD FEED
Document Title: King's Lynn Compressor Station Level 2 Schedules (Phase 2)
Document/Rev No: 203513C-001-PLG-0301/B
Date: June 2022

6.6 Option 4A Level 2 Schedule



J25231 NG MCPD
King's Option 4A Ex

ID	Task Name	Duration	Start	Finish	Predecessors	2022	2023	2024	2025	2026	2027	2028	2029
1	Option 4A; 2 x GT Driven Compression Machinery Equipment Located on Redundant Plant Area 1 Plinths	318.2 wks	Fri 30/12/22	Fri 02/02/29									
2	Milestones	291.8 wks	Mon 03/07/23	Fri 02/02/29									
3	NG Option Selection Complete	0 wks	Mon 03/07/23	Mon 03/07/23	13								
4	Commence FEED	0 wks	Tue 09/04/24	Tue 09/04/24	25SS								
5	Commence Execute	0 wks	Tue 28/10/25	Tue 28/10/25	34SS								
6	Place Oder for Compression Train	0 wks	Mon 19/01/26	Mon 19/01/26	35								
7	Site Mobilisation	0 wks	Tue 28/10/25	Tue 28/10/25	44SS								
8	Commissioning Complete	0 wks	Fri 08/12/28	Fri 08/12/28	50								
9	Project Complete	0 wks	Fri 02/02/29	Fri 02/02/29	18								
10	Ofgem Approvals & National Grid Governance	318.2 wks	Fri 30/12/22	Fri 02/02/29									
11	Select Study Complete	0 wks	Fri 30/12/22	Fri 30/12/22									
12	Ofgem Re-opener Window #1 Kings Lynn	26 wks	Mon 02/01/23	Fri 30/06/23	11								
13	Option Approved	0 wks	Mon 03/07/23	Mon 03/07/23	12FS+1 day								
14	Ofgem Re-opener Window #2 Kings Lynn	8 wks	Tue 02/09/25	Mon 27/10/25	17								
15	Funding Approved	0 wks	Mon 27/10/25	Mon 27/10/25	14								
16	National Grid F3 Sanction (FEED)	8 wks	Tue 16/01/24	Mon 11/03/24	21								
17	National Grid F4 Sanction (EPC)	8 wks	Tue 08/07/25	Mon 01/09/25	27								
18	National Grid T6 Sanction (Project Completion)	8 wks	Mon 11/12/28	Fri 02/02/29	50								
19	Pre-FEED	40 wks	Tue 04/07/23	Mon 08/04/24									
20	Pre-FEED Study ITT & Award	12 wks	Tue 04/07/23	Mon 25/09/23	13								
21	Pre-FEED Study	16 wks	Tue 26/09/23	Mon 15/01/24	20								
22	FEED ITT Package	8 wks	Tue 21/11/23	Mon 15/01/24	21SS+8 wks								
23	FEED ITT & Award	12 wks	Tue 16/01/24	Mon 08/04/24	22,13FS+2 days								
24	Define	65 wks	Tue 09/04/24	Mon 07/07/25									
25	FEED Study	39 wks	Tue 09/04/24	Mon 06/01/25	23,21,16								
26	Vendor Engagement	26 wks	Tue 07/05/24	Mon 04/11/24	25SS+4 wks								
27	Execute ITT & Award	26 wks	Tue 07/01/25	Mon 07/07/25	25,26								
28	Consents	64 wks	Tue 16/01/24	Mon 07/04/25									
29	Environmental Assessment	52 wks	Tue 16/01/24	Mon 13/01/25	21								
30	Planing Consents and Approvals	52 wks	Tue 16/01/24	Mon 13/01/25	21								
31	Construction Camp Lease Agreement	52 wks	Tue 09/04/24	Mon 07/04/25	25SS								
32	Execute	162.8 wks	Tue 28/10/25	Fri 08/12/28									
33	Engineering	52 wks	Tue 28/10/25	Mon 26/10/26									
34	Detailed Engineering	52 wks	Tue 28/10/25	Mon 26/10/26	15								
35	Compressor Purchase Order Placement	12 wks	Tue 28/10/25	Mon 19/01/26	34SS,26								
36	Piping / Instruments / Electrical / Structural Bulks Orders Placement	12 wks	Tue 28/10/25	Mon 19/01/26	34SS								
37	Civils Bulks Orders Placement	12 wks	Tue 28/10/25	Mon 19/01/26	34SS								
38	Procurement	75 wks	Tue 20/01/26	Mon 28/06/27									
39	Compression Train and Associated Equipment - Unit 1	69 wks	Tue 20/01/26	Mon 17/05/27	35								
40	Compression Train and Associated Equipment - Unit 2	75 wks	Tue 20/01/26	Mon 28/06/27	35								
41	Piping / Instruments / Electrical /Structural Bulks	39 wks	Tue 20/01/26	Mon 19/10/26	36								
42	Civils Bulks	12 wks	Tue 20/01/26	Mon 13/04/26	37								
43	Construction	162.8 wks	Tue 28/10/25	Fri 08/12/28									
44	Site Set-Up & Mobilisation	12 wks	Tue 28/10/25	Mon 19/01/26	29,30,31,34SS								
45	Civil Work for New Compressors (Demolition & Construction)	69 wks	Tue 17/03/26	Mon 12/07/27	44,42FS-4 wks								
46	Pre-Fabrication of Piping Spools / Structures	26 wks	Tue 20/10/26	Mon 19/04/27	41								
47	Install New Compressor - Unit 1	52 wks	Tue 18/05/27	Mon 15/05/28	45FS-12 wks,39,								
48	Installe New Compressor - Unit 2	52 wks	Tue 29/06/27	Mon 26/06/28	45FS-12 wks,46,								
49	Site Shutdown for Hook-up of New Compressors	24 wks	Mon 03/04/28	Fri 15/09/28	47FS-8 wks								
50	Pre-comm and Commissioning of New Compressors	16 wks	Mon 21/08/28	Fri 08/12/28	49FS-4 wks								



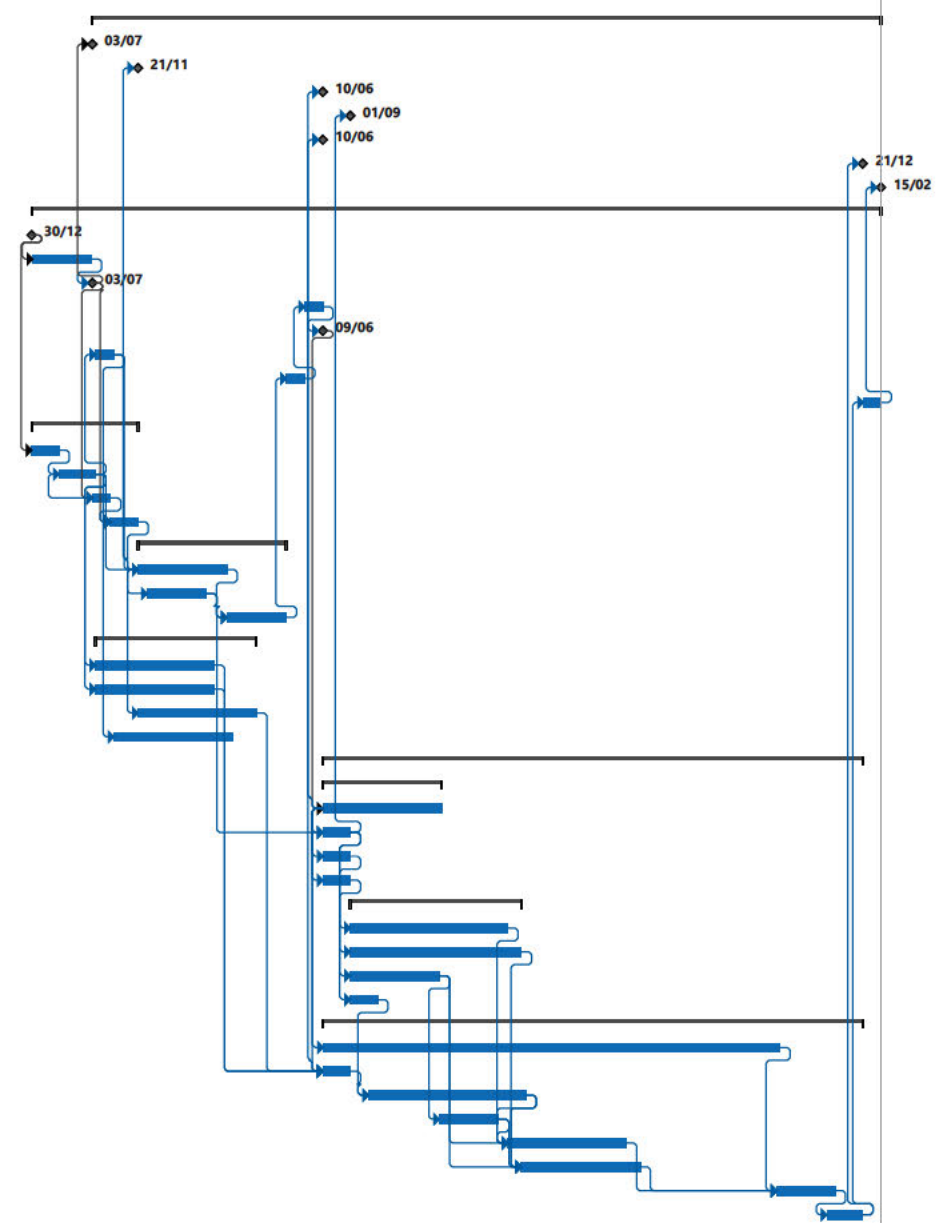
Project Title: King's Lynn & Peterborough Compressor Station MCPD FEED
Document Title: King's Lynn Compressor Station Level 2 Schedules (Phase 2)
Document/Rev No: 203513C-001-PLG-0301/B
Date: June 2022

6.7 Option 4B Level 2 Schedule



J25231 NG MCPD
King's Option 4B Ex

ID	Task Name	Duration	Start	Finish	Predecessors	022	2023	2024	2025	2026	2027	2028	2029	2030
1	Option 4B; 2 x Elec Driven Compression Machinery Equipment Located on Redundant Plant Area 1 Plinths	372.2 wks	Fri 30/12/22	Fri 15/02/30										
2	Milestones	345.8 wks	Mon 03/07/23	Fri 15/02/30										
3	NG Option Selection Complete	0 wks	Mon 03/07/23	Mon 03/07/23	13									
4	Commence FEED	0 wks	Tue 21/11/23	Tue 21/11/23	25SS									
5	Commence Execute	0 wks	Tue 10/06/25	Tue 10/06/25	35SS									
6	Place Order for Compression Train	0 wks	Mon 01/09/25	Mon 01/09/25	36									
7	Site Mobilisation	0 wks	Tue 10/06/25	Tue 10/06/25	46SS									
8	Commissioning Complete	0 wks	Fri 21/12/29	Fri 21/12/29	52									
9	Project Complete	0 wks	Fri 15/02/30	Fri 15/02/30	18									
10	Ofgem Approvals & National Grid Governance	372.2 wks	Fri 30/12/22	Fri 15/02/30										
11	Select Study Complete	0 wks	Fri 30/12/22	Fri 30/12/22										
12	Ofgem Re-opener Window #1 Kings Lynn	26 wks	Mon 02/01/23	Fri 30/06/23	11									
13	Option Approved	0 wks	Mon 03/07/23	Mon 03/07/23	12FS+1 day									
14	Ofgem Re-opener Window #2 Kings Lynn	8 wks	Tue 15/04/25	Mon 09/06/25	17									
15	Funding Approved	0 wks	Mon 09/06/25	Mon 09/06/25	14									
16	National Grid F3 Sanction (FEED)	8 wks	Fri 14/07/23	Thu 07/09/23	21									
17	National Grid F4 Sanction (EPC)	8 wks	Tue 18/02/25	Mon 14/04/25	27									
18	National Grid T6 Sanction (Project Completion)	8 wks	Mon 24/12/29	Fri 15/02/30	52									
19	Pre-FEED	46.4 wks	Fri 30/12/22	Mon 20/11/23										
20	Pre-FEED Study ITT & Award	12 wks	Fri 30/12/22	Thu 23/03/23	11									
21	Pre-FEED Study	16 wks	Fri 24/03/23	Thu 13/07/23	20									
22	FEED ITT Package	8 wks	Tue 04/07/23	Mon 28/08/23	21SS+8 wks,13									
23	FEED ITT & Award	12 wks	Tue 29/08/23	Mon 20/11/23	22,13FS+2 days									
24	Define	65 wks	Tue 21/11/23	Mon 17/02/25										
25	FEED Study	39 wks	Tue 21/11/23	Mon 19/08/24	23,21,16									
26	Vendor Engagement	26 wks	Tue 19/12/23	Mon 17/06/24	25SS+4 wks									
27	Execute ITT & Award	26 wks	Tue 20/08/24	Mon 17/02/25	25,26									
28	Consents	70.4 wks	Fri 14/07/23	Mon 18/11/24										
29	Environmental Assessment	52 wks	Fri 14/07/23	Thu 11/07/24	21									
30	Planing Consents and Approvals	52 wks	Fri 14/07/23	Thu 11/07/24	21									
31	Construction Camp Lease Agreement	52 wks	Tue 21/11/23	Mon 18/11/24	25SS									
32	UKPN Power Supply Discussion & Power Supply Design	52 wks	Fri 08/09/23	Thu 05/09/24	16									
33	Execute	236.8 wks	Tue 10/06/25	Fri 21/12/29										
34	Engineering	52 wks	Tue 10/06/25	Mon 08/06/26										
35	Detailed Engineering	52 wks	Tue 10/06/25	Mon 08/06/26	15									
36	Compressor Purchase Order Placement	12 wks	Tue 10/06/25	Mon 01/09/25	35SS,26									
37	Piping / Instruments / Electrical / Structural Bulks Orders Placement	12 wks	Tue 10/06/25	Mon 01/09/25	35SS									
38	Civils Bulks Orders Placement	12 wks	Tue 10/06/25	Mon 01/09/25	35SS									
39	Procurement	75 wks	Tue 02/09/25	Mon 08/02/27										
40	Compression Train and Associated Equipment - Unit 1	69 wks	Tue 02/09/25	Mon 28/12/26	36									
41	Compression Train and Associated Equipment - Unit 2	75 wks	Tue 02/09/25	Mon 08/02/27	36									
42	Piping / Instruments / Electrical /Structural Bulks	39 wks	Tue 02/09/25	Mon 01/06/26	37									
43	Civils Bulks	12 wks	Tue 02/09/25	Mon 24/11/25	38									
44	Construction	236.8 wks	Tue 10/06/25	Fri 21/12/29										
45	UK Power Networks - 132kV Feeder Installation	200 wks	Wed 11/06/25	Wed 11/04/29	35SS+0.32 wks									
46	Site Set-Up & Mobilisation	12 wks	Tue 10/06/25	Mon 01/09/25	29,30,31,35SS									
47	Civil Work for New Compressors (Demolition & Construction)	69 wks	Tue 28/10/25	Mon 22/02/27	46,43FS-4 wks									
48	Pre-Fabrication of Piping Spools / Structures	26 wks	Tue 02/06/26	Mon 30/11/26	42									
49	Install New Compressor - Unit 1	52 wks	Tue 29/12/26	Mon 27/12/27	47FS-12 wks,40,									
50	Installe New Compressor - Unit 2	52 wks	Tue 09/02/27	Mon 07/02/28	47FS-12 wks,48,									
51	Site Shutdown for Hook-up of New Compressors	26 wks	Mon 02/04/29	Fri 28/09/29	49FS-4 wks,50FS									
52	Pre-comm and Commissioning of New Compressors	16 wks	Mon 03/09/29	Fri 21/12/29	51FS-4 wks									



Project Title: King's Lynn & Peterborough Compressor Station MCPD FEED
Document Title: King's Lynn Compressor Station Level 2 Schedules (Phase 2)
Document/Rev No: 203513C-001-PLG-0301/B
Date: June 2022

6.8 Option 5 Level 2 Schedule



J25231 NG MCPD
King's Option 5 Exec

