

**To request a Capacity Conversion**, please send an email to [capacityauctions@nationalgrid.com](mailto:capacityauctions@nationalgrid.com) specifying the following criteria:

- PRISMA reference number(s) for the bundled auction(s)
  - The Interconnection Point
  - The direction of flow
  - The unbundled capacity amount to be converted
  - The capacity duration, and period, for the conversion
  - Shipper ID (Gemini BA code)
  - Contact details for the shipper
- The request must be received by National Grid NTS no later than 17:00 3 business days after the close of an auction.
  - A request can be withdrawn at any time up to the conversion deadline.
  - NG NTS will respond to a request within 2 business days
  - These changes will not impact Shipper User interfaces. National Grid will utilise existing functionality in UK Link Gemini to process conversion requests.
  - No change to Exit MOS or Charge types

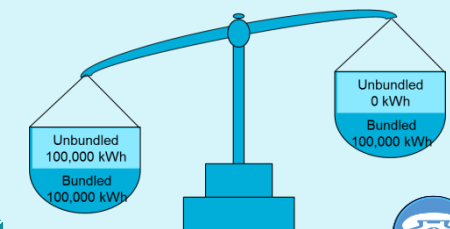
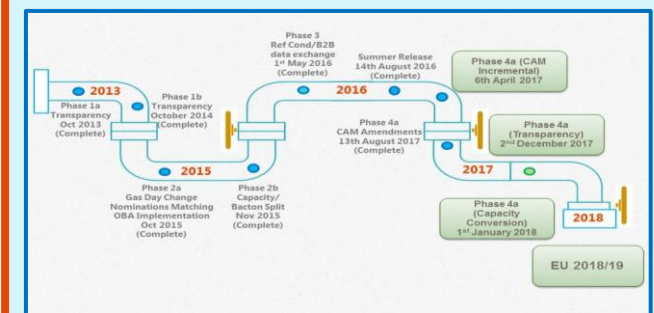
### National Grid position on EU Referendum

- National Grid is working closely with stakeholders to understand the implications of Brexit.
- National Grid will continue to be committed in its involvement within Europe and work with our European Partners.
- It is important that energy continues to be traded without barriers, seamlessly across the European Energy Area.

June 2017



## EU Gas Regulatory Change Phase 4a: Capacity Conversion Solution

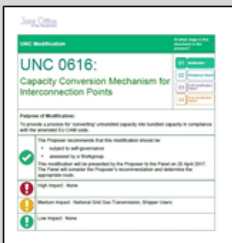


Please email questions to :  
[Capacityauctions@nationalgrid.com](mailto:Capacityauctions@nationalgrid.com)



Please call:  
01926 654057

## Introduction



- The EU legislation came into law on 3rd March 2011. The aim of this legislation is to create a **harmonised European internal energy market**
- We have been implementing changes to **processes and systems** since 2013
- The **Capacity Allocation Mechanism (CAM) Code** requires a **capacity conversion mechanism** to be offered to users at Interconnection Points.
- **Modification 616 Capacity Conversion mechanism for Interconnection Points** introduces this requirement to the UNC.

## Description

- Shippers who hold **unbundled capacity** on one side of an IP may wish to acquire **matching unbundled capacity** on the other side of the IP
- **Priority** is given to offering **Bundled Capacity**, so the shipper may find they have to buy a new bundled product to acquire capacity on both sides of the IP, which means the Shipper will have purchased Capacity twice
- A mechanism allowing the shipper to **convert Capacity from Bundled to Unbundled** is to be offered by National Grid.
- **Effective 1<sup>st</sup> January 2018**

## Who is impacted?

- This solution impacts **Shippers, Xoserve Invoicing and the National Grid Capacity team**

## What is impacted?

### Gemini



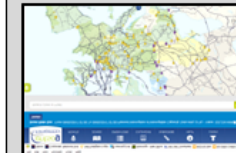
Currently no Capacity Conversion mechanism is available on Gemini. The Capacity Team will use the **Buyback functionality** to perform conversion requests on behalf of shippers.

### MIPI



Reports on MIPI and the **ENTSOG Transparency Platform** are not impacted

### ENTSOG TP



### Xoserve Invoices



A new **Entry Method of Sale:**  
 - CEC Capacity Conversion Entry Charge  
 - CEA Capacity Conversion Entry Adjustment

and **Charge Type:**  
 XBF: Capacity Conversion Exit Charge  
 ABF: Capacity Conversion Exit Adjustment

will be used. These changes will not impact Shipper User Interfaces