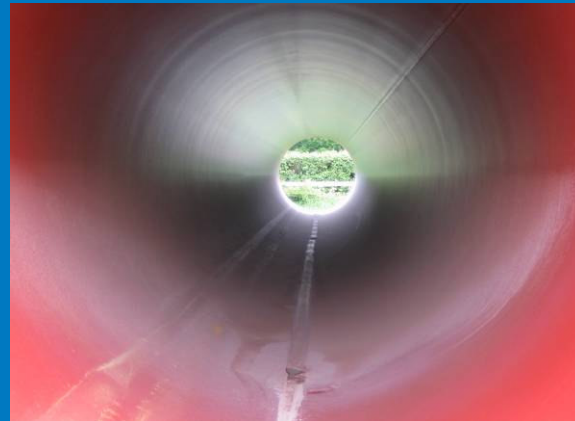


# Tirley



July 2012

## Background

---

- The construction of the Pressure Reduction Installation (PRI) at Tirley has been delayed due to issues with obtaining planning consent
- This is the last phase of the network reinforcements associated with the Milford Haven ASEP

## Current Position

---

- The construction and initial testing of the Tirley PRI have now been completed.
- The next phase will be the tying in of the installation to the existing Feeders 23 and 28, which is planned to occur during the period 8th to 22nd July 2012 inclusive.
- As indicated in our Maintenance Plan (published on 1st April 2012) our capability at the Milford Haven ASEP during this period is forecast to be approximately 23 mscm/d.

## Next Steps

---

- The installation and supporting infrastructure will then need to be fully commissioned and tested
- We will require the support of shippers and terminal operators for the timely completion of this phase
- We would anticipate that the pipeline will then be fully operational early winter 2012/13