

MIPI Performance

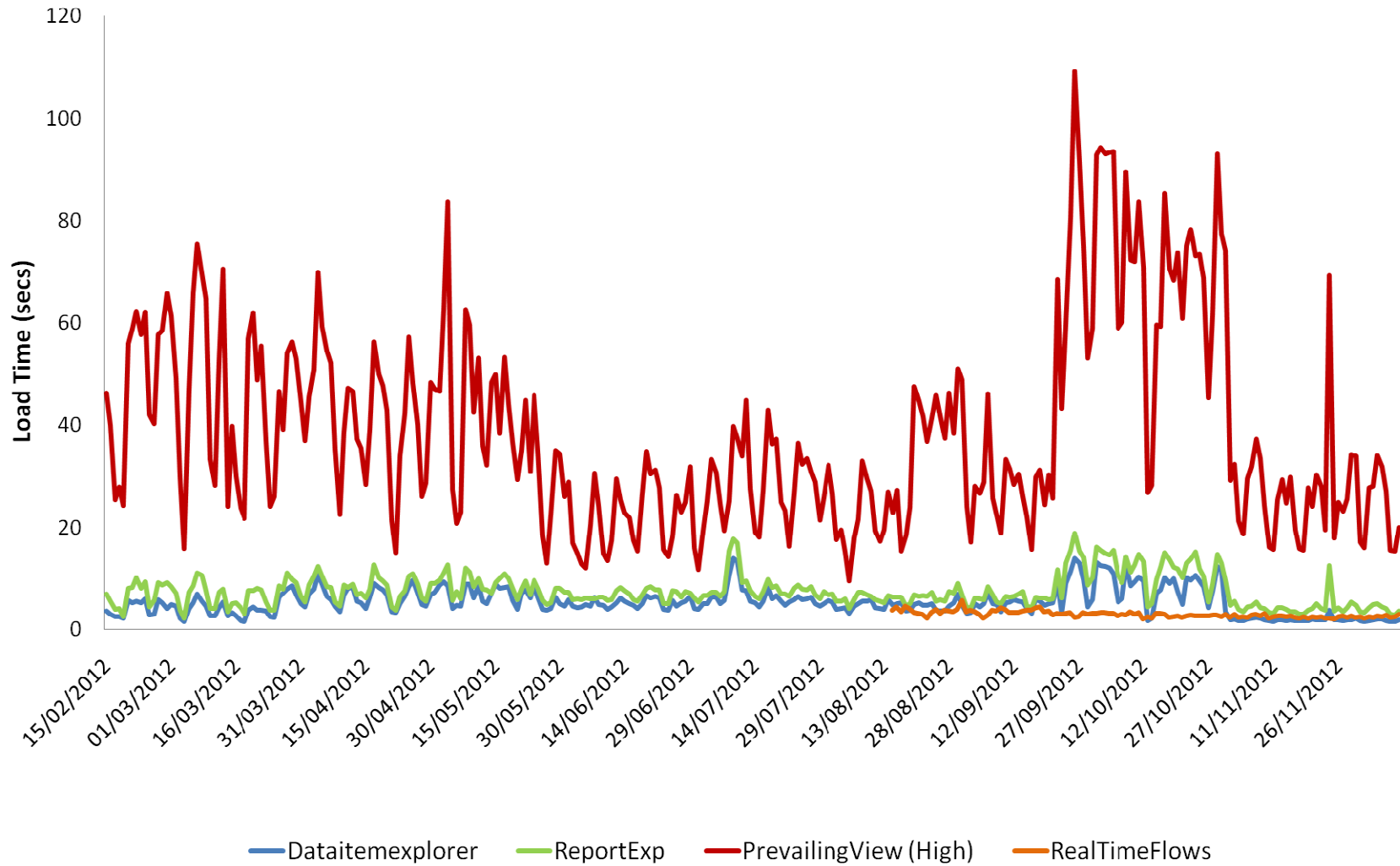


12th December 2012

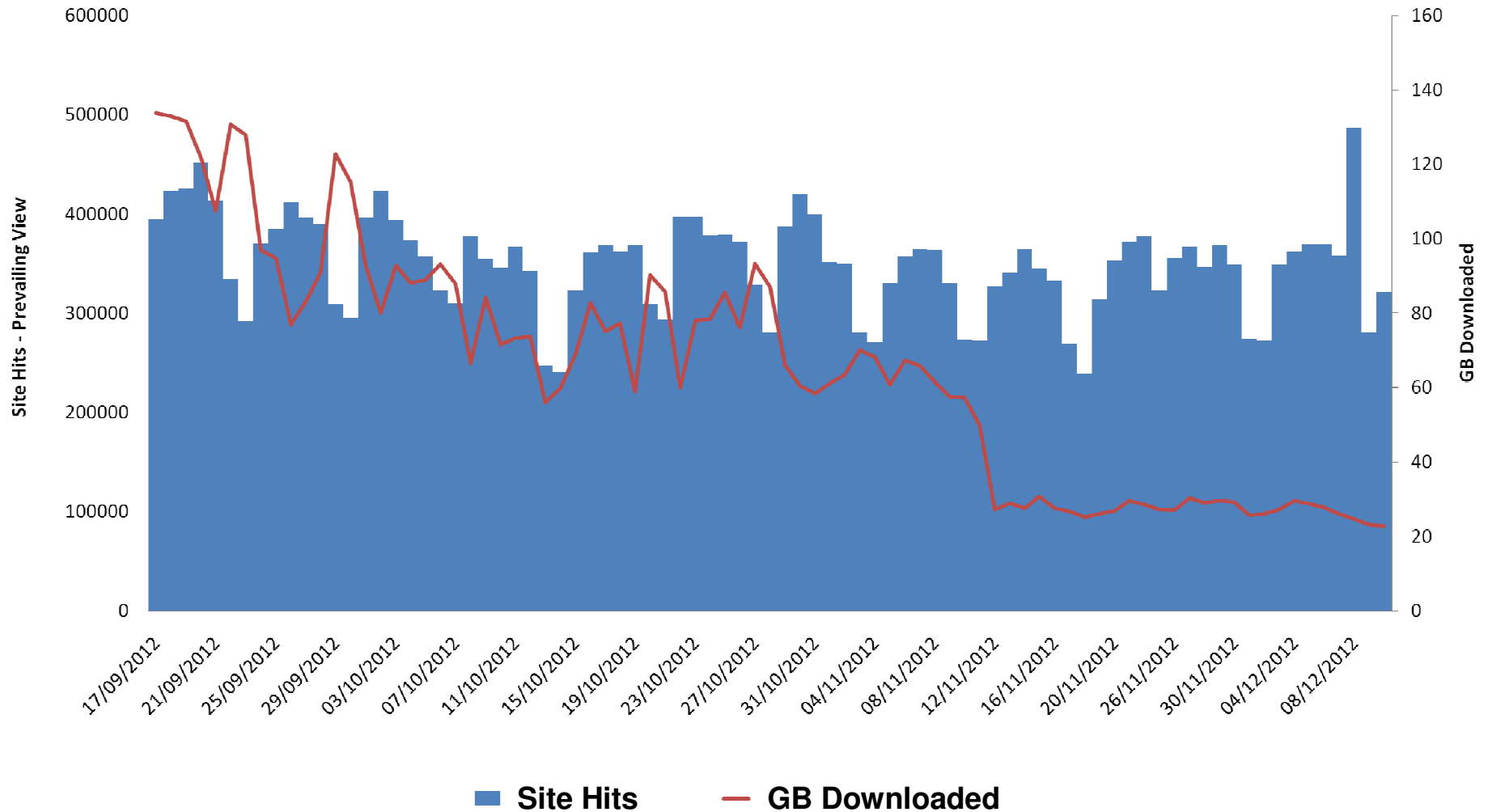
MIPI Performance – Usage Load factors

- Load factors (number of requests received / volume of data downloaded) have a significant impact on MIPI speeds and performance
- Current loads remain in excess of system specification
- A relatively small number of users had been the source of a disproportionate site load
- Contact has now been made directly with many of these users
- Tools enabling the enhanced monitoring of MIPI site usage have now been made available to our analytical teams

MIPI Performance – Average Load Times



Market Information – Data Acquisition



Contact Details

Please use the contact details below for help and advice regarding publication frequencies of gas data, or for any other general queries about gas data availability or content:

e-mail: sysop.centre.reporting@nationalgrid.com

Tel: +44 1926 65 6474