

# Operational Forum Meeting



Wednesday 14th December 2011, 10:30AM, Radisson Grafton Hotel,  
130 Tottenham Court Road, London.

# System Management Principles Statement



## **System Management Principles Statement**

- Compliance report Period October and November 2011
- Summary of balancing actions and breaches for October and November 2011
- Performance compared to last year

# Summary Report

	<b>Oct 11</b>	<b>Nov 11</b>
Total Number of Buy Actions	11	20
Total Number of Sell Actions	33	9
Total	44	29
Number of Material Breaches	0	0
Number of Non-Material Breaches	0	0

## 2010 / 2011 Comparison

	To Nov 2010	To Nov 2011
Number of Balancing Actions (Calendar year to date)	356	369
Number of Material Breaches (Calendar year to date)	0	0
Number of Non Material Breaches (Calendar year to date)	0	0

# Operational Overview

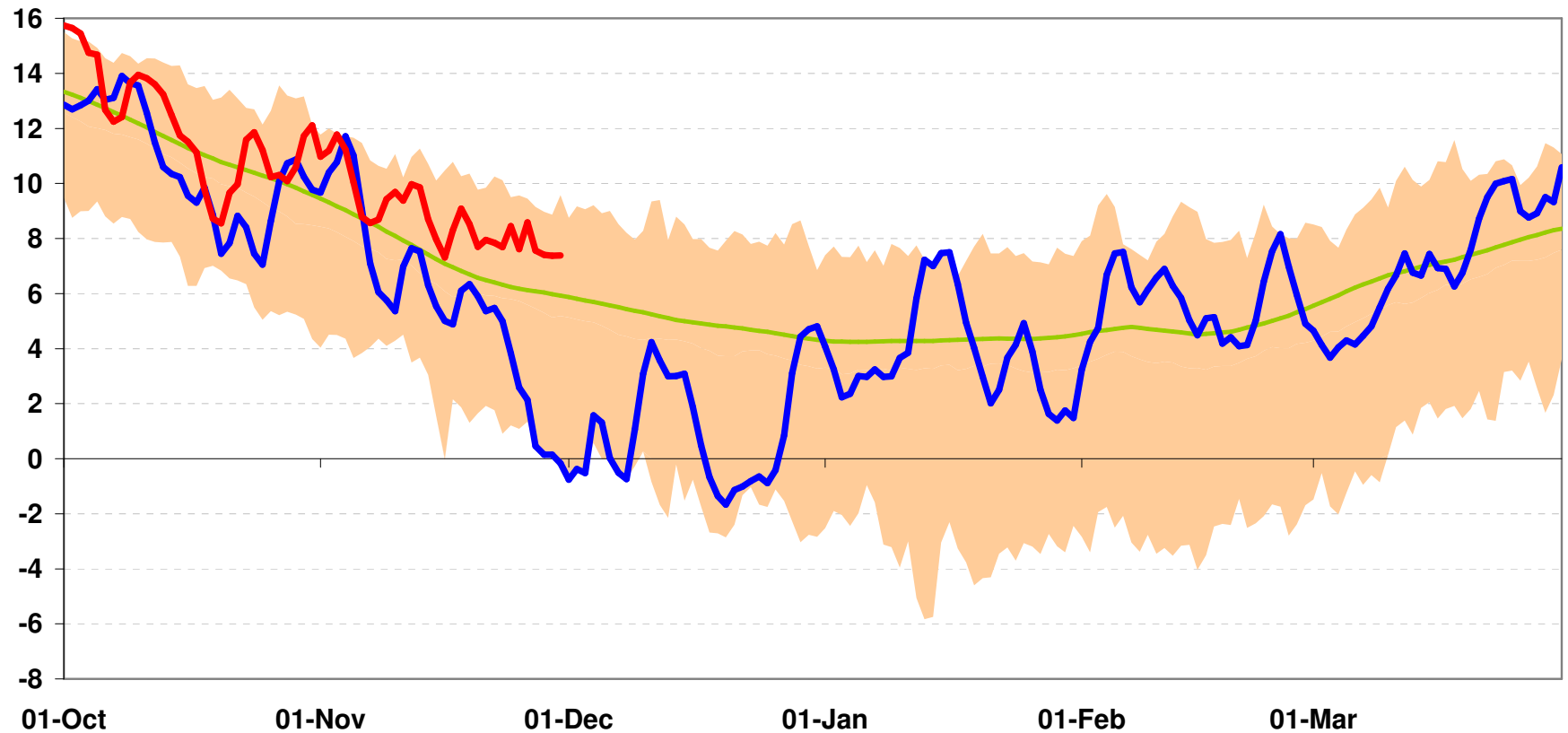


# Weather



# National Composite Weather 2010 Vs 2011

## National Composite Weather 2011/12 compared to 2010/11



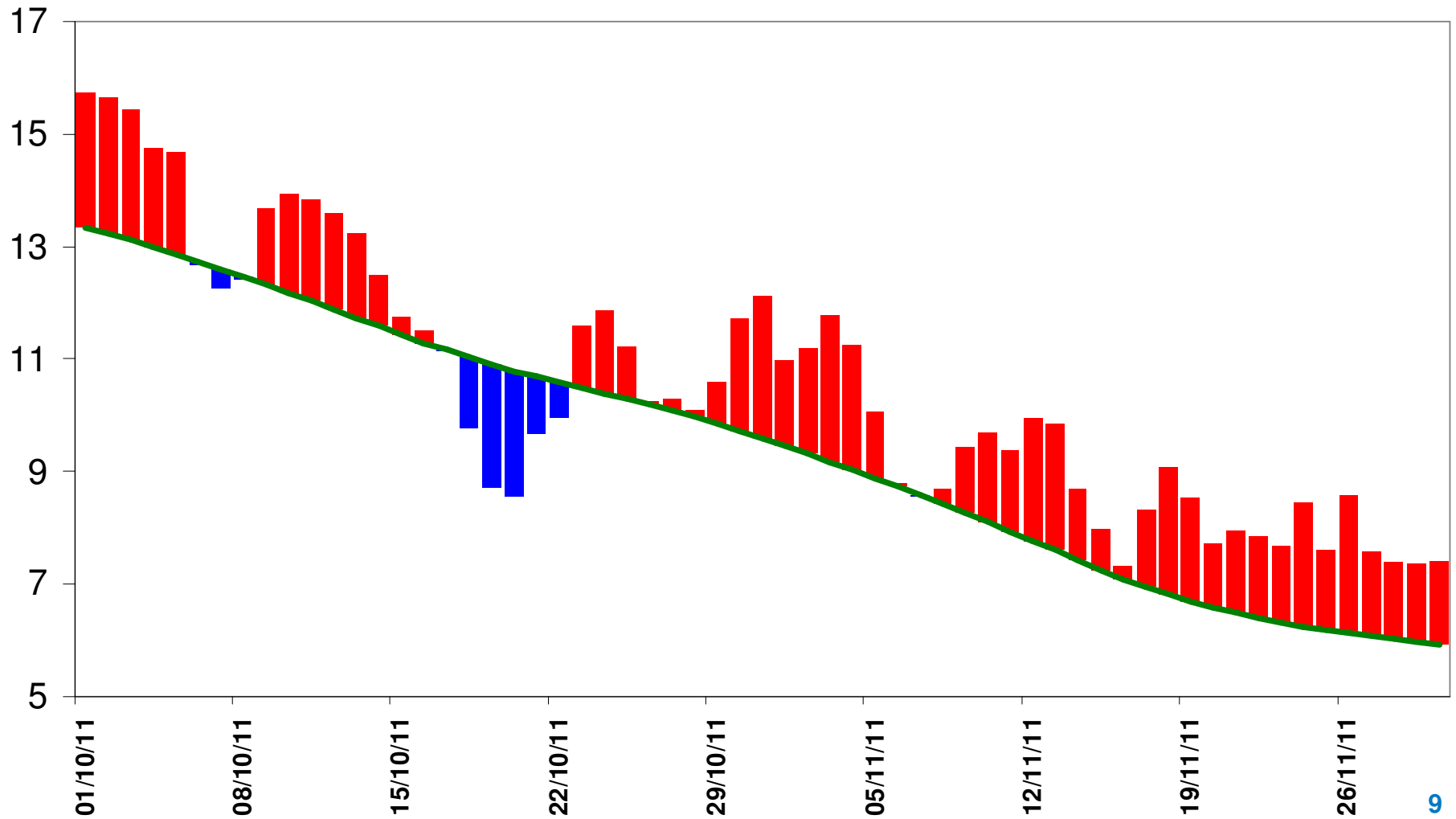
Historical range 2011/12 2010/11 Seasonal Normal



# CWV's

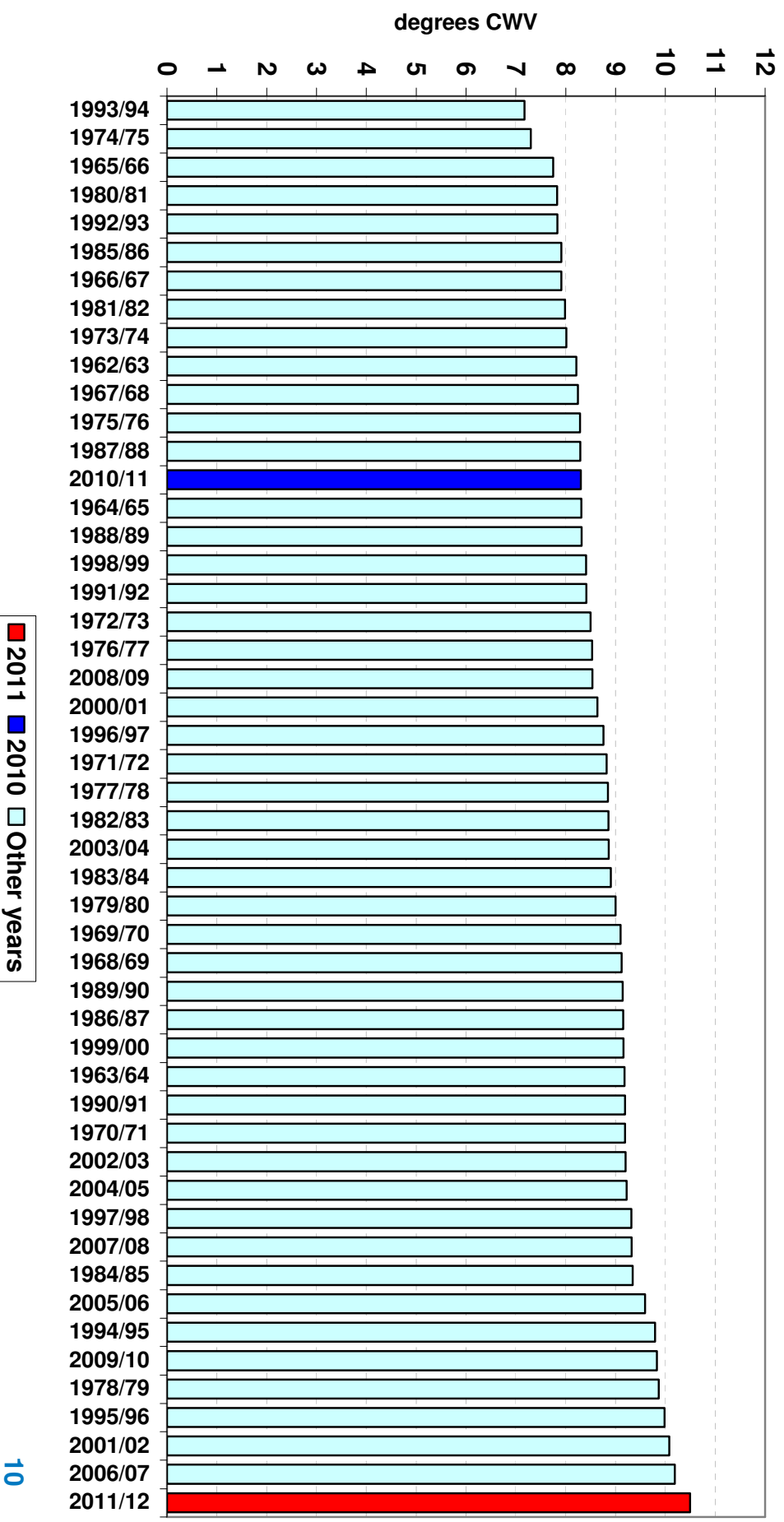
1<sup>st</sup> October to 30<sup>th</sup> November 2011

**National CWV and EP2 SNCW**



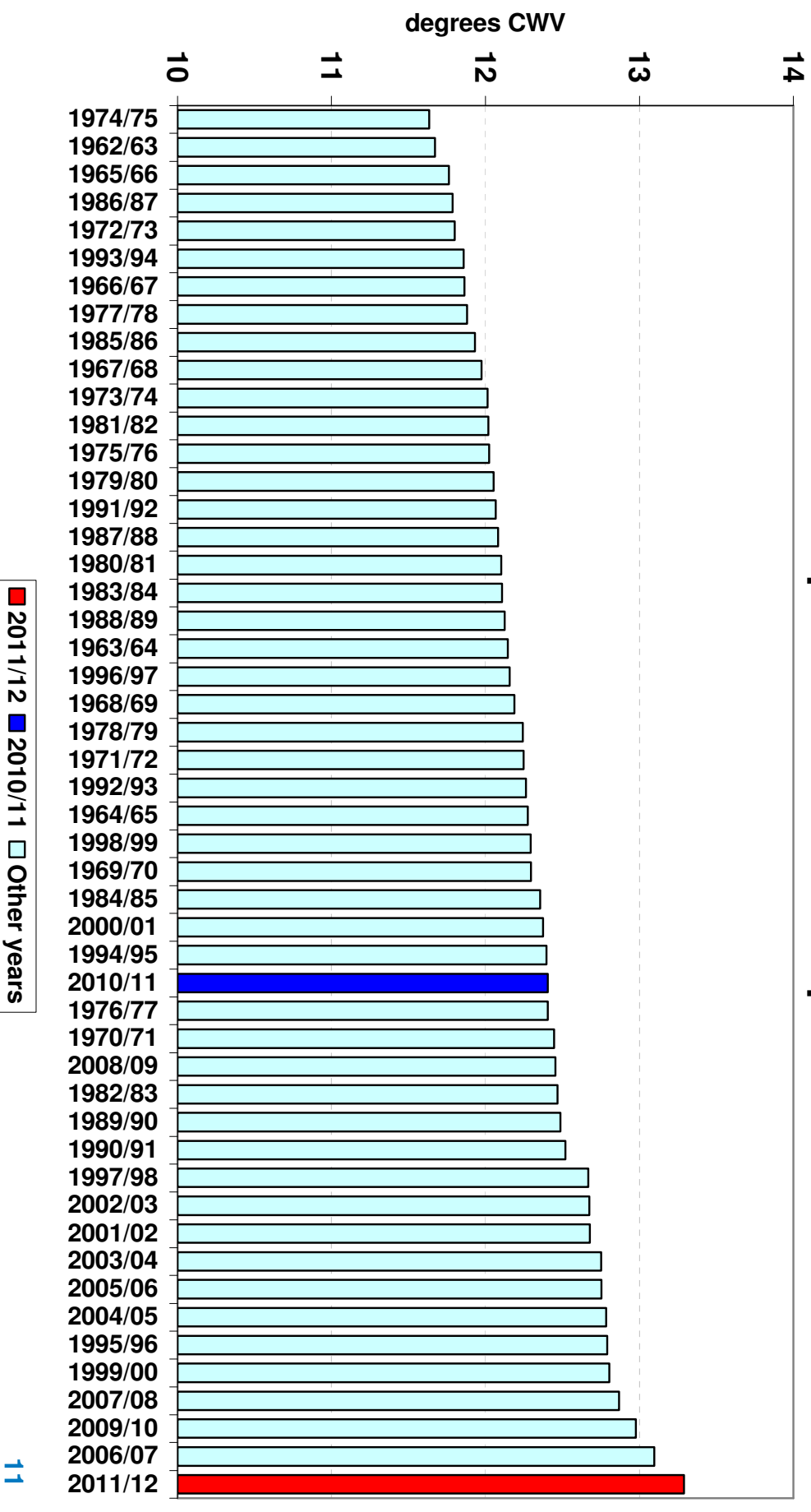
# Mean Composite Weather Variables Oct to Nov 2011 Vs Previous Yrs.

## Mean National Composite Weather for October to November



# Mean Composite Weather Variables April to Nov 2011 Vs Previous Yrs.

Mean National Composite Weather for April to November

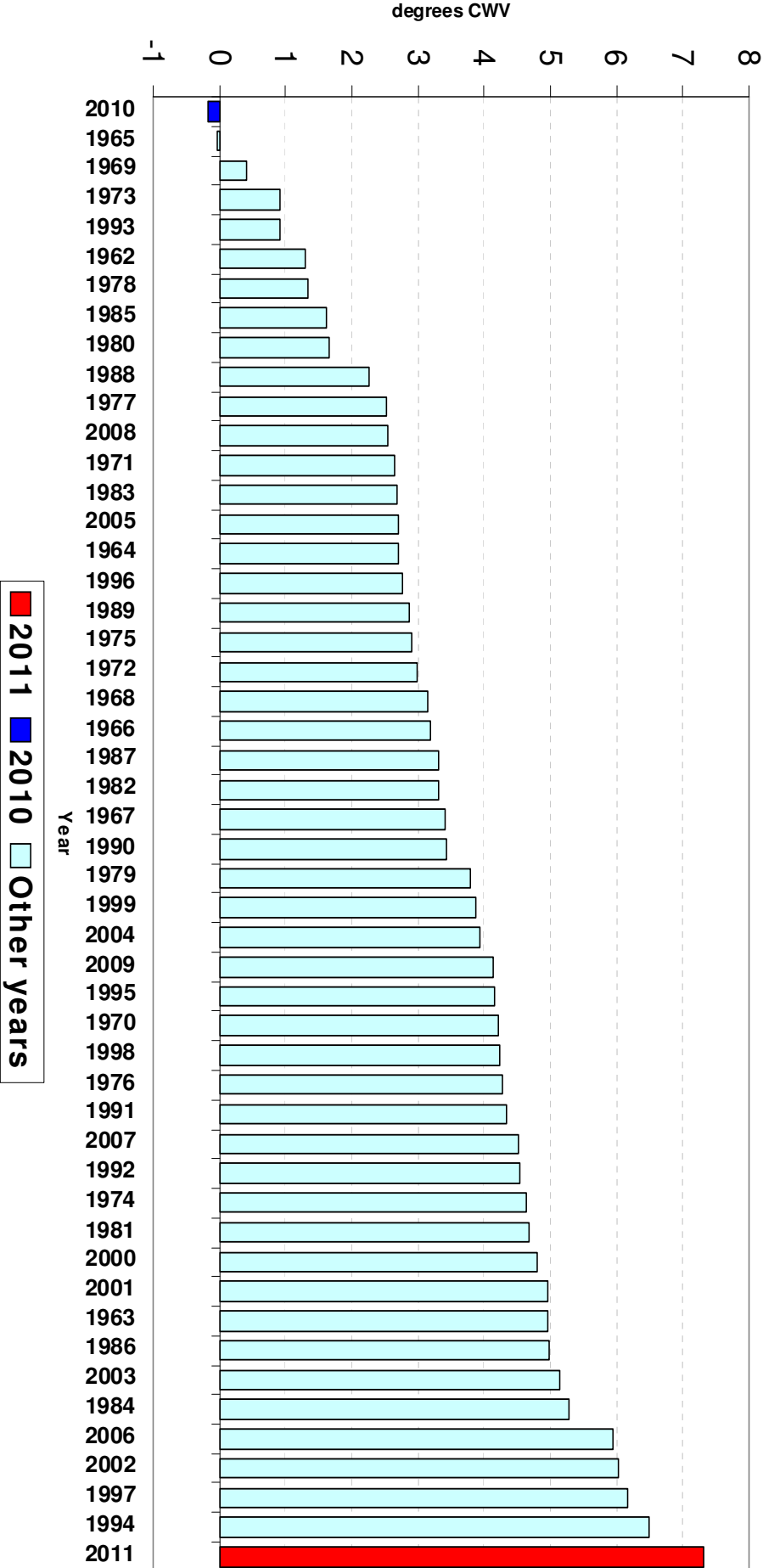


# Minimum Composite Weather Variables

## Nov 2011 Vs Nov 2010



Minimum National Composite Weather for November



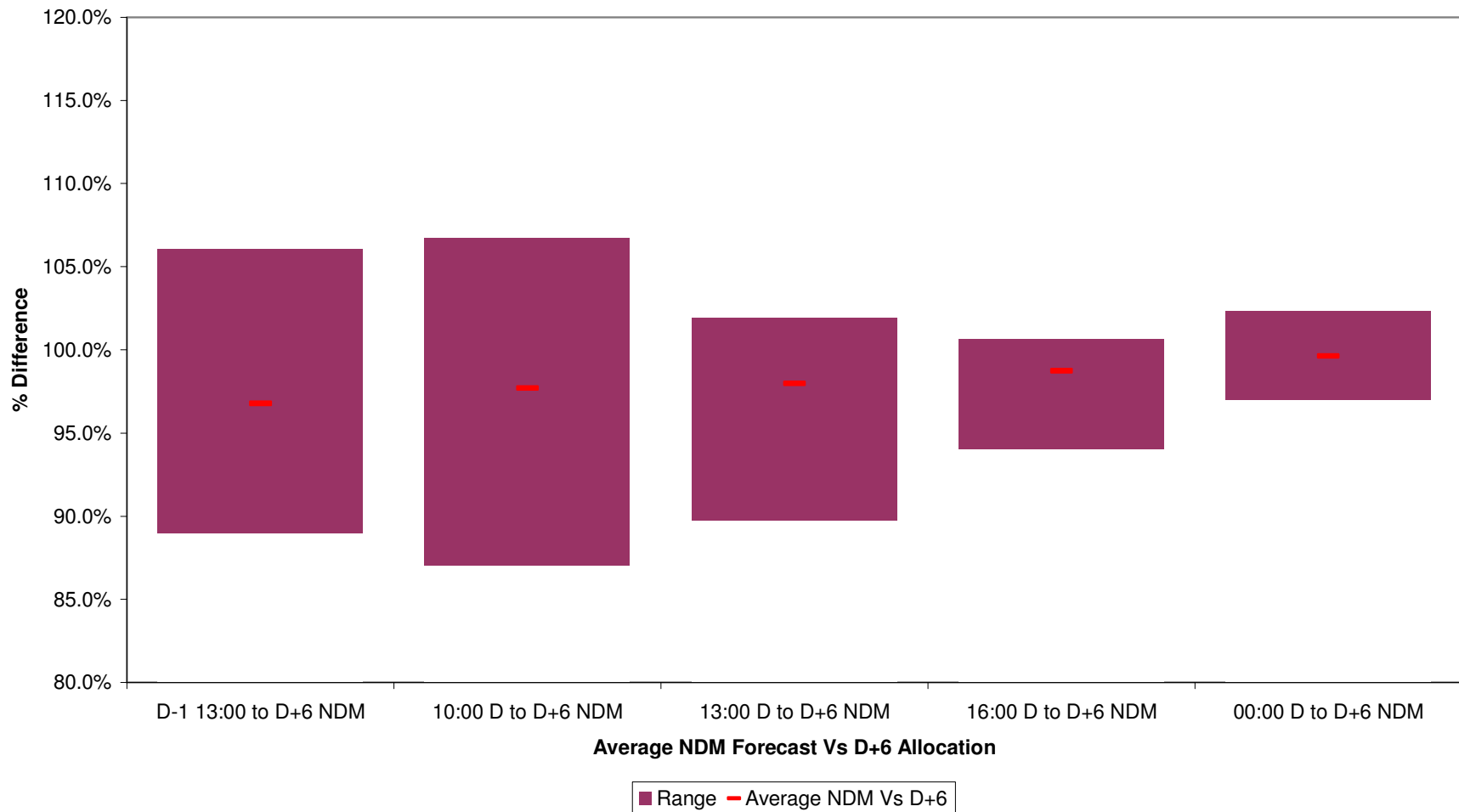
# Demands



# NDM Forecast Vs D+6 Final NDM

Gas Days 1<sup>st</sup> to 30<sup>th</sup> Nov 2011

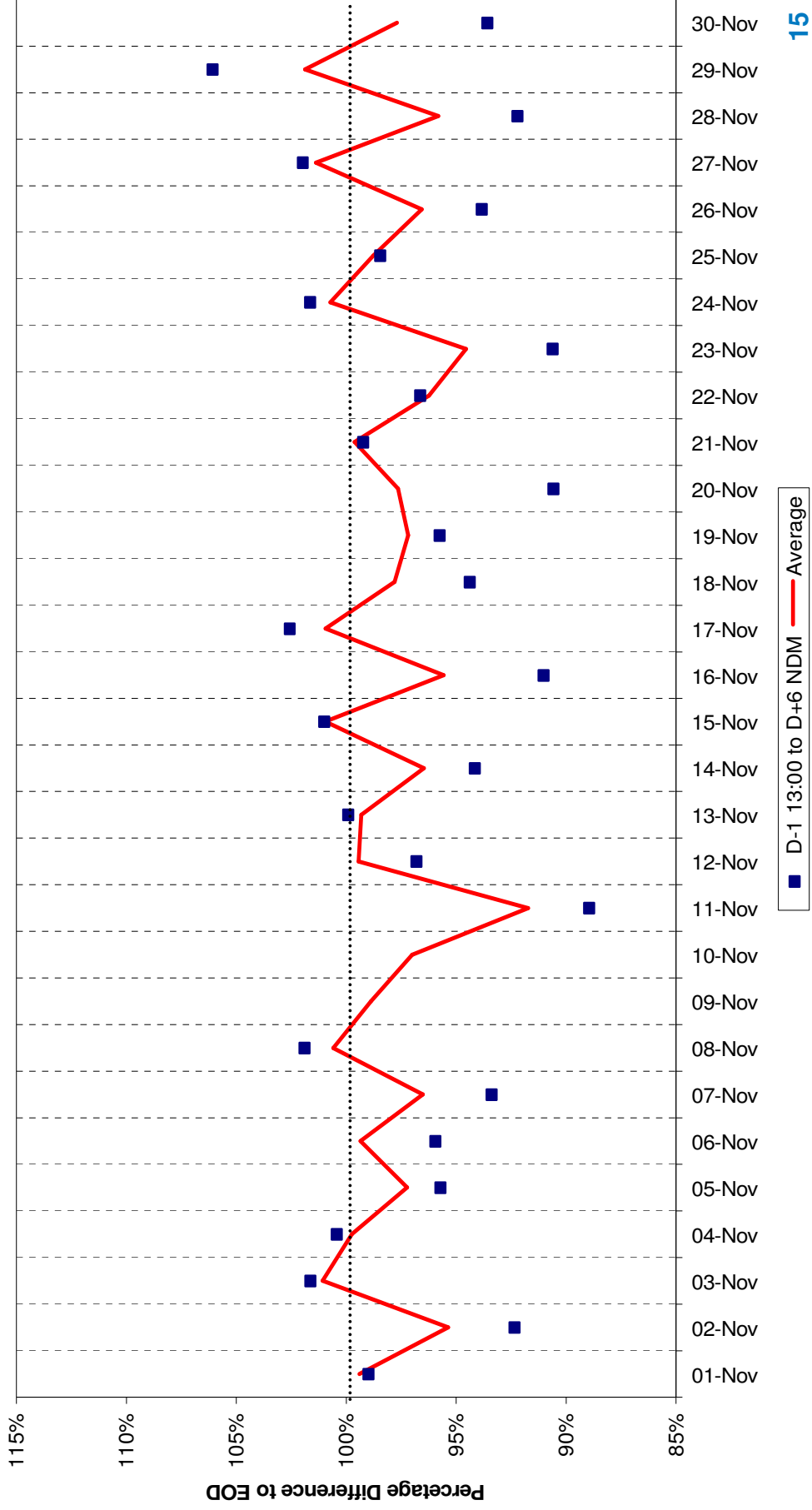
NDM Forecast Vs Final D+6 NDM Demand - Gas Day's 1st to 30th November 2011



# NDM Forecast Accuracy

1<sup>st</sup> to 30<sup>th</sup> November 2011.

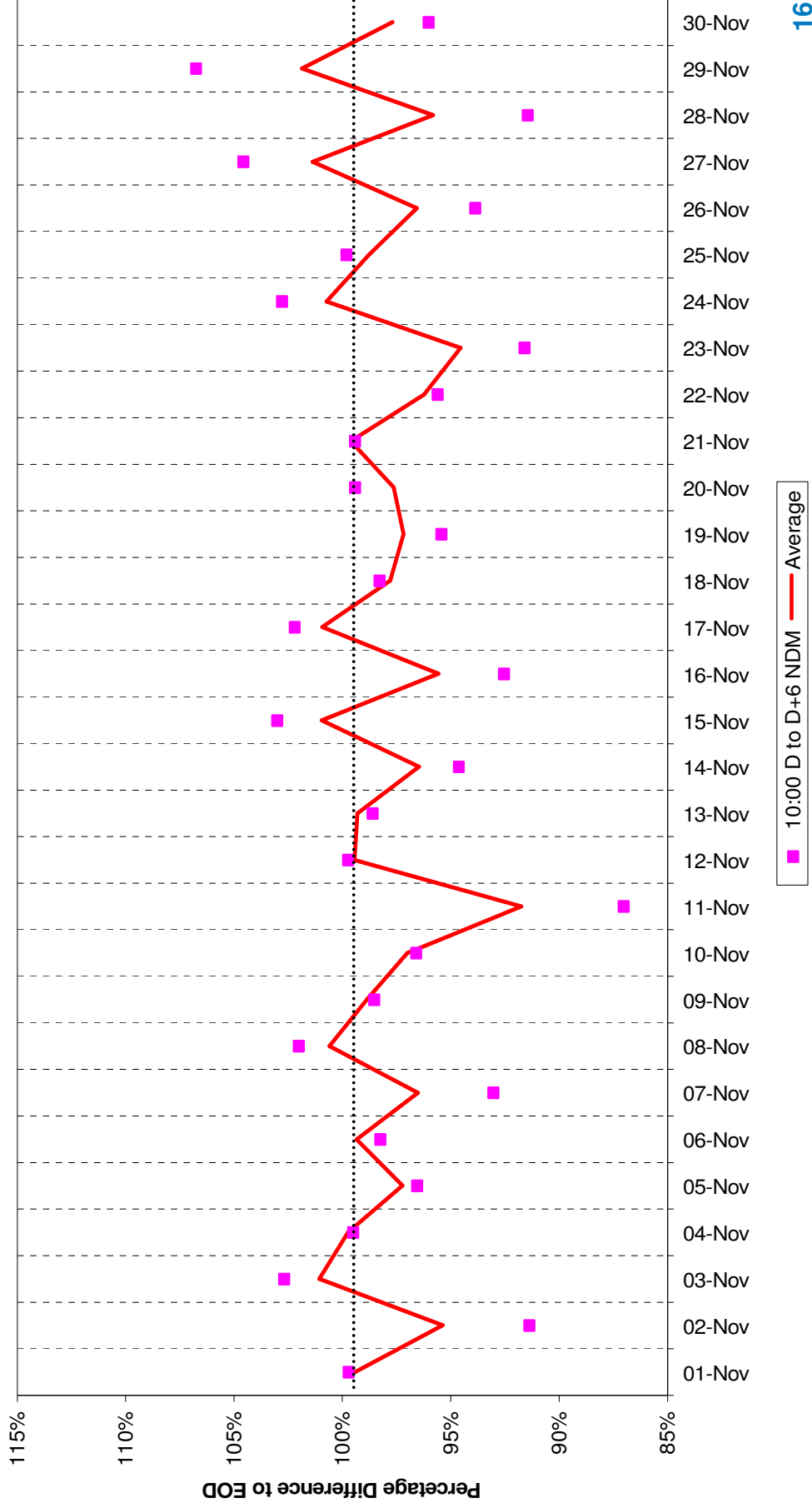
Demand Forecast Accuracy Nov 2011



# NDM Forecast Accuracy

1<sup>st</sup> to 30<sup>th</sup> November 2011.

Demand Forecast Accuracy Nov 2011

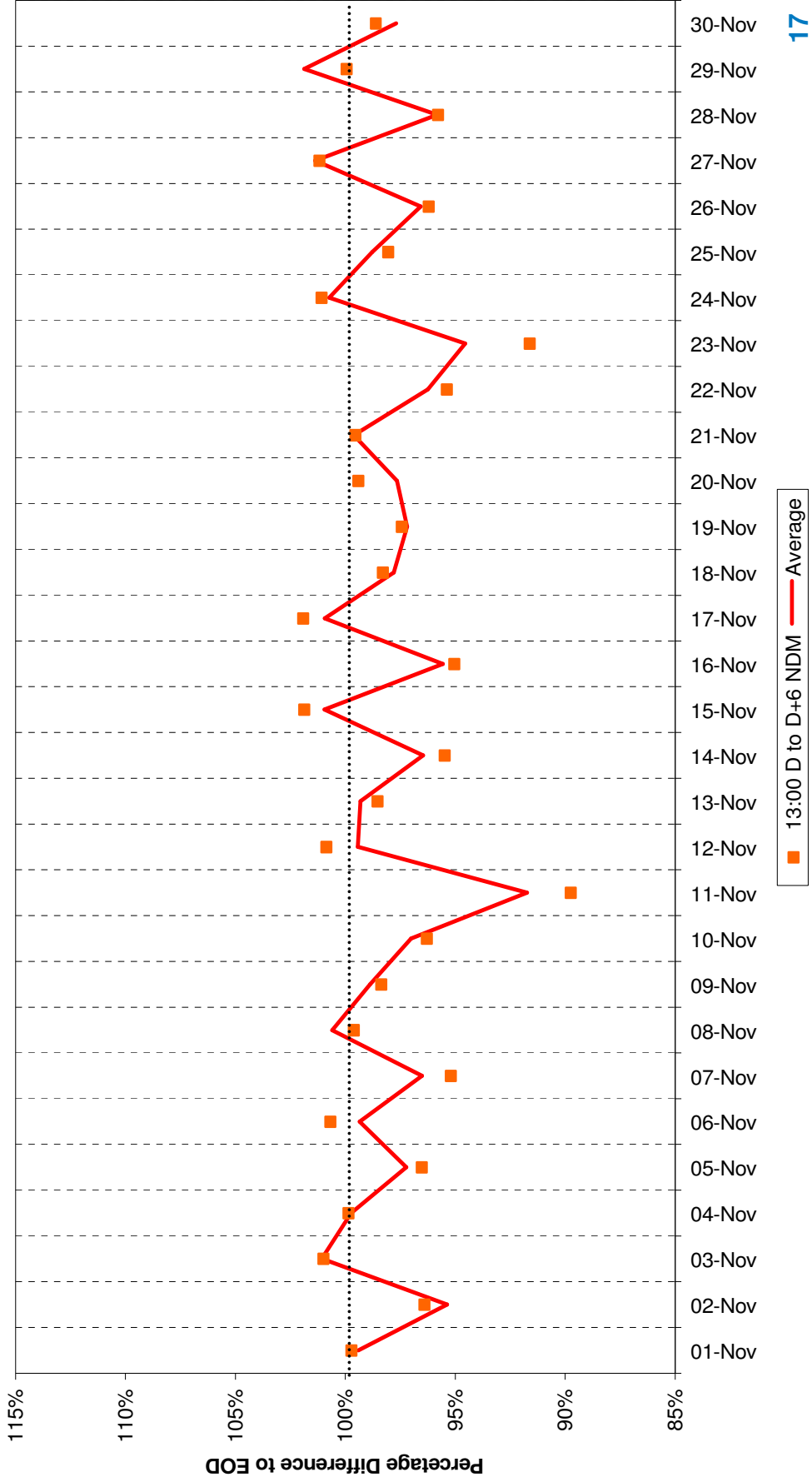




# NDM Forecast Accuracy

1<sup>st</sup> to 30<sup>th</sup> November 2011.

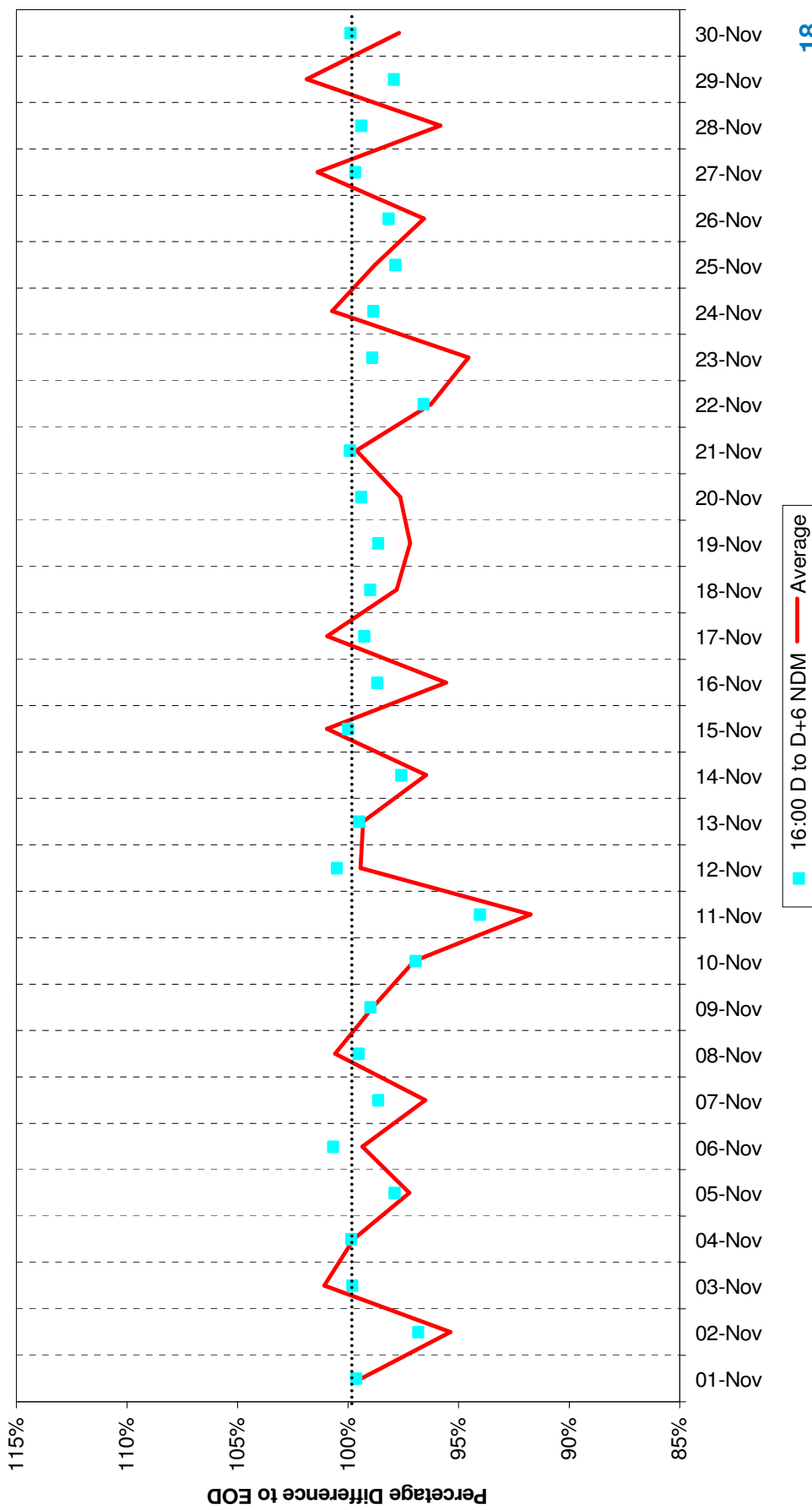
Demand Forecast Accuracy Nov 2011



# NDM Forecast Accuracy

1<sup>st</sup> to 30<sup>th</sup> November 2011.

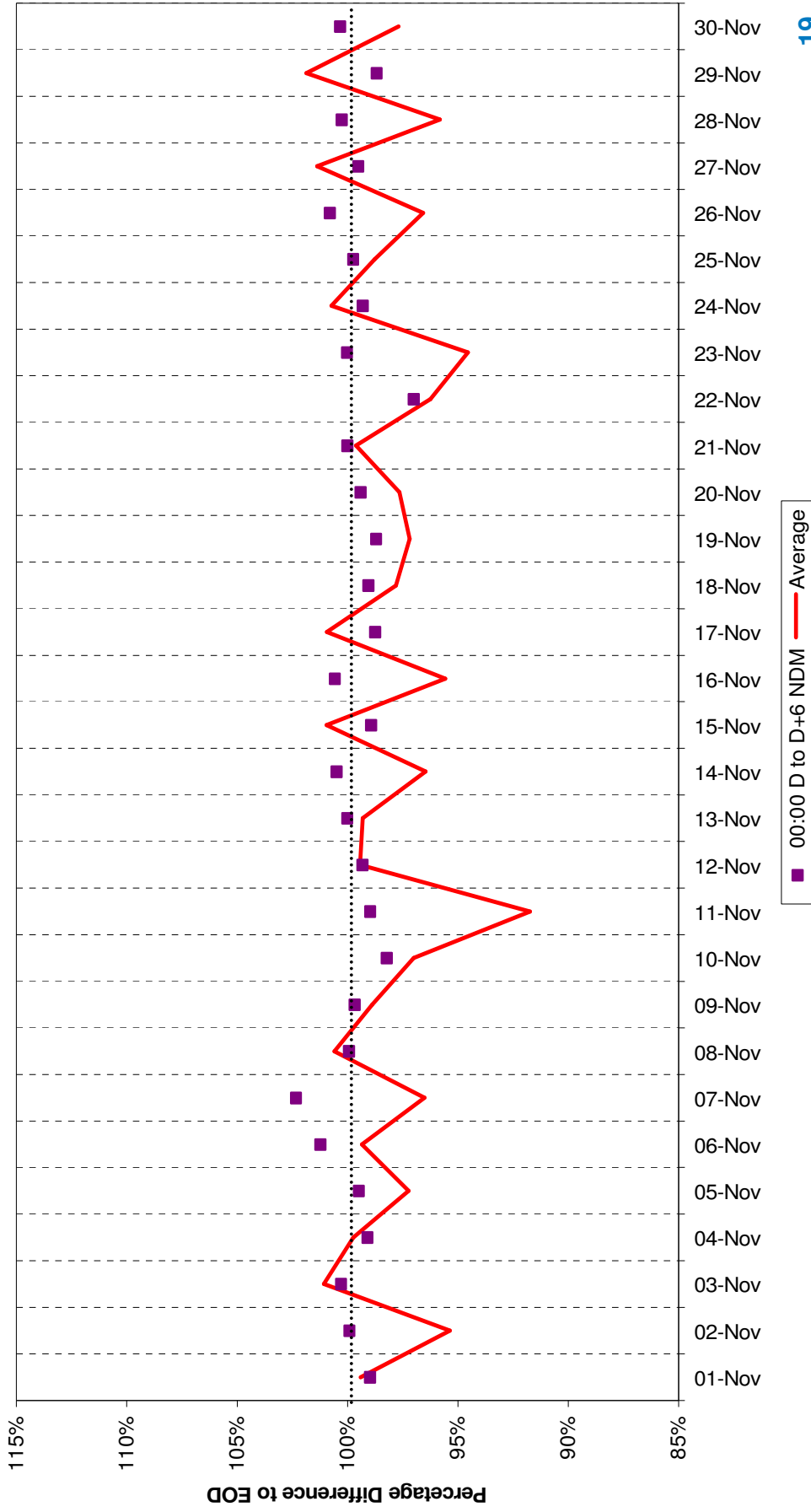
**Demand Forecast Accuracy Nov 2011**



# NDM Forecast Accuracy

1<sup>st</sup> to 30<sup>th</sup> November 2011.

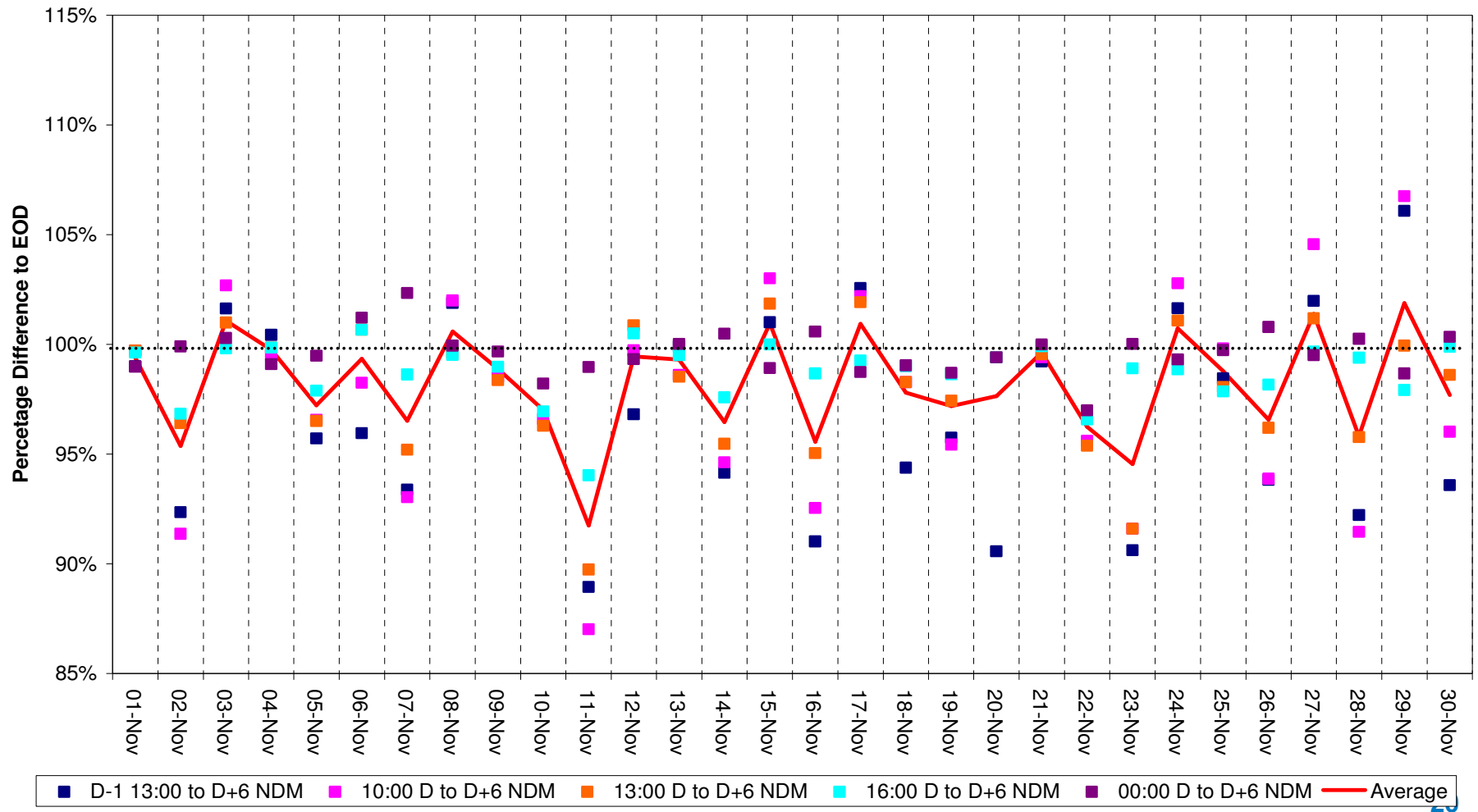
Demand Forecast Accuracy Nov 2011



# NDM Forecast Accuracy

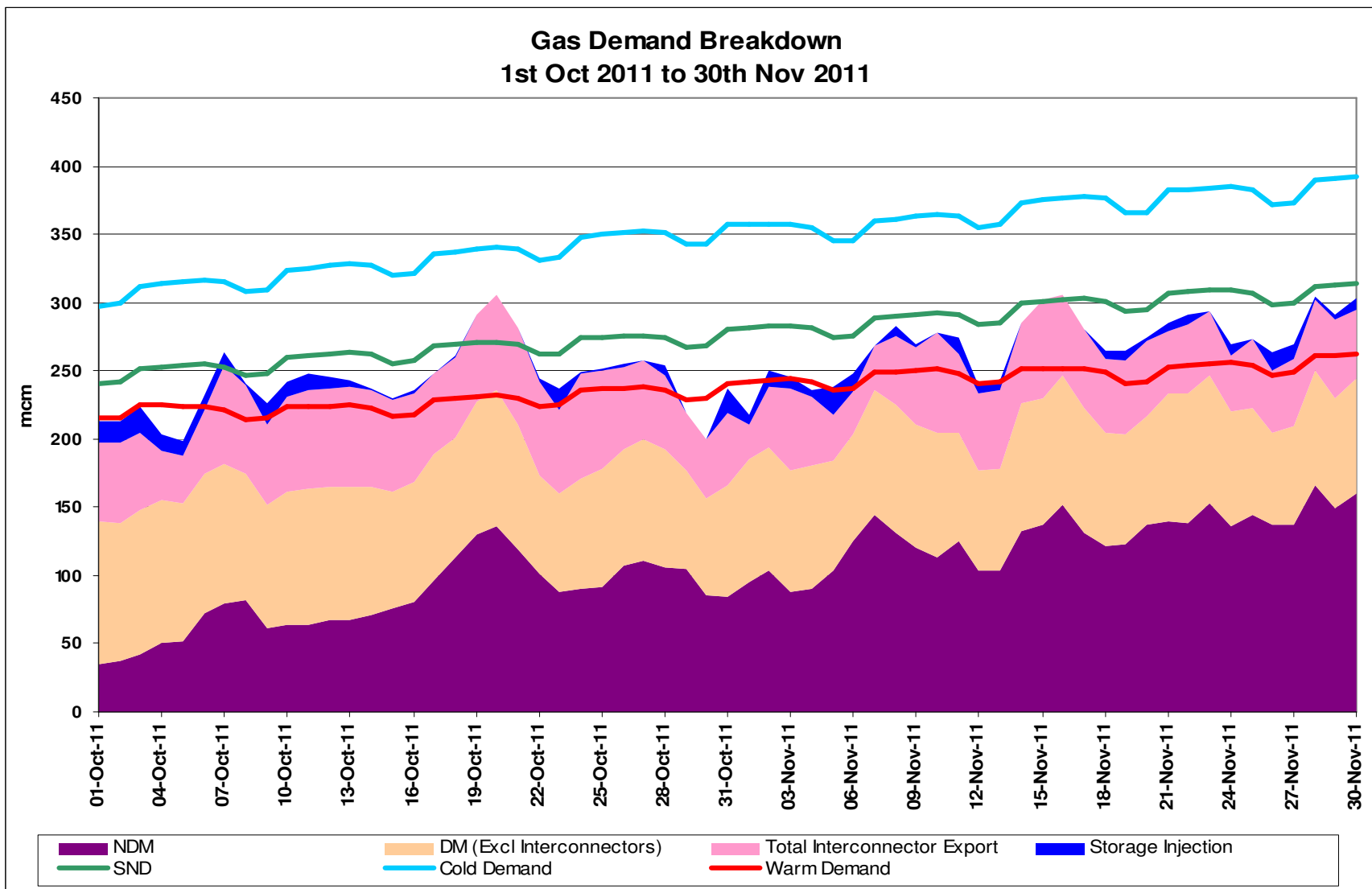
1<sup>st</sup> to 30th November 2011.

Demand Forecast Accuracy Nov 2011



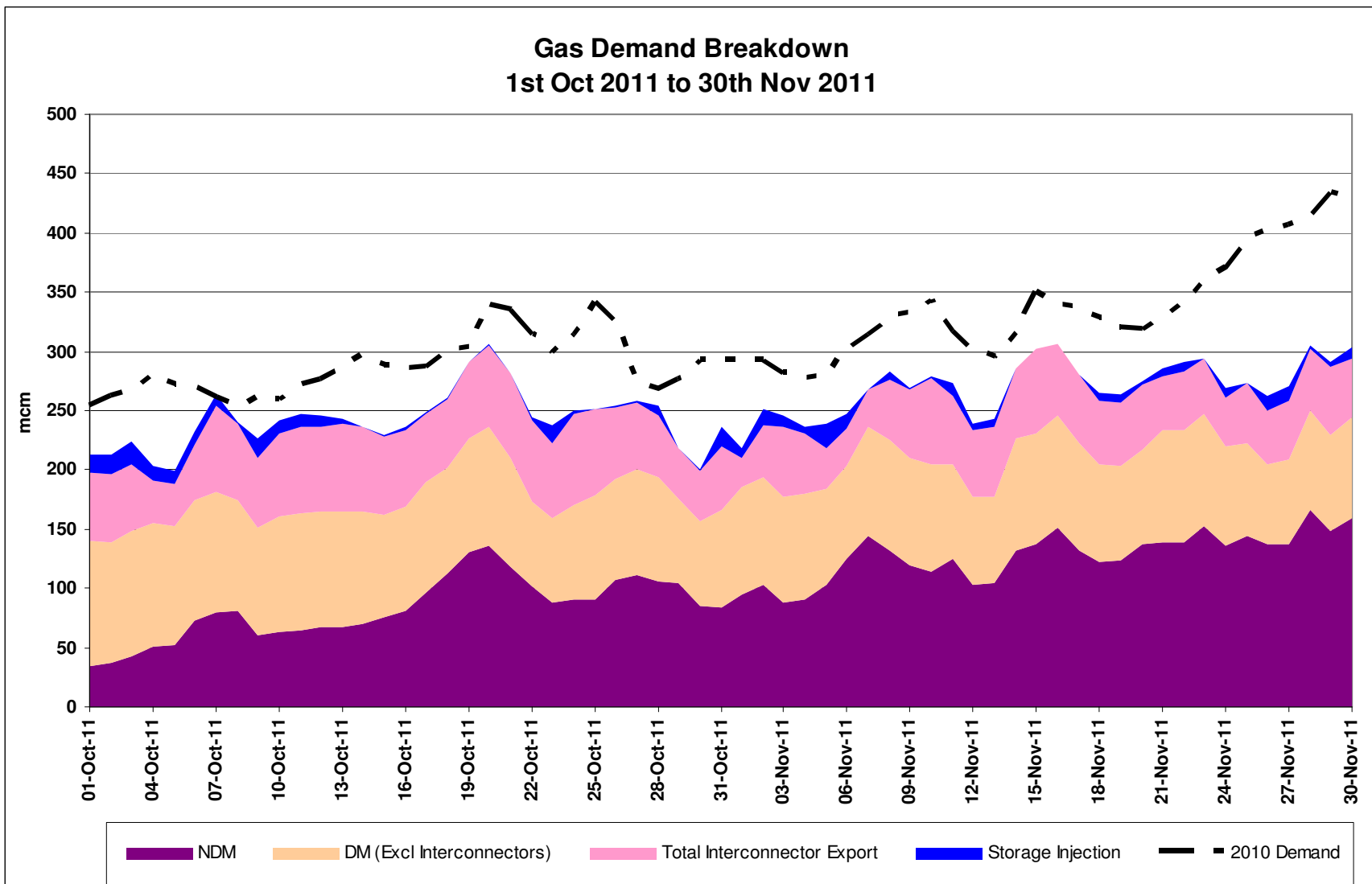
# Gas Demand Breakdown

1<sup>st</sup> October 2011 to 30<sup>th</sup> November 2011



# Gas Demand Breakdown

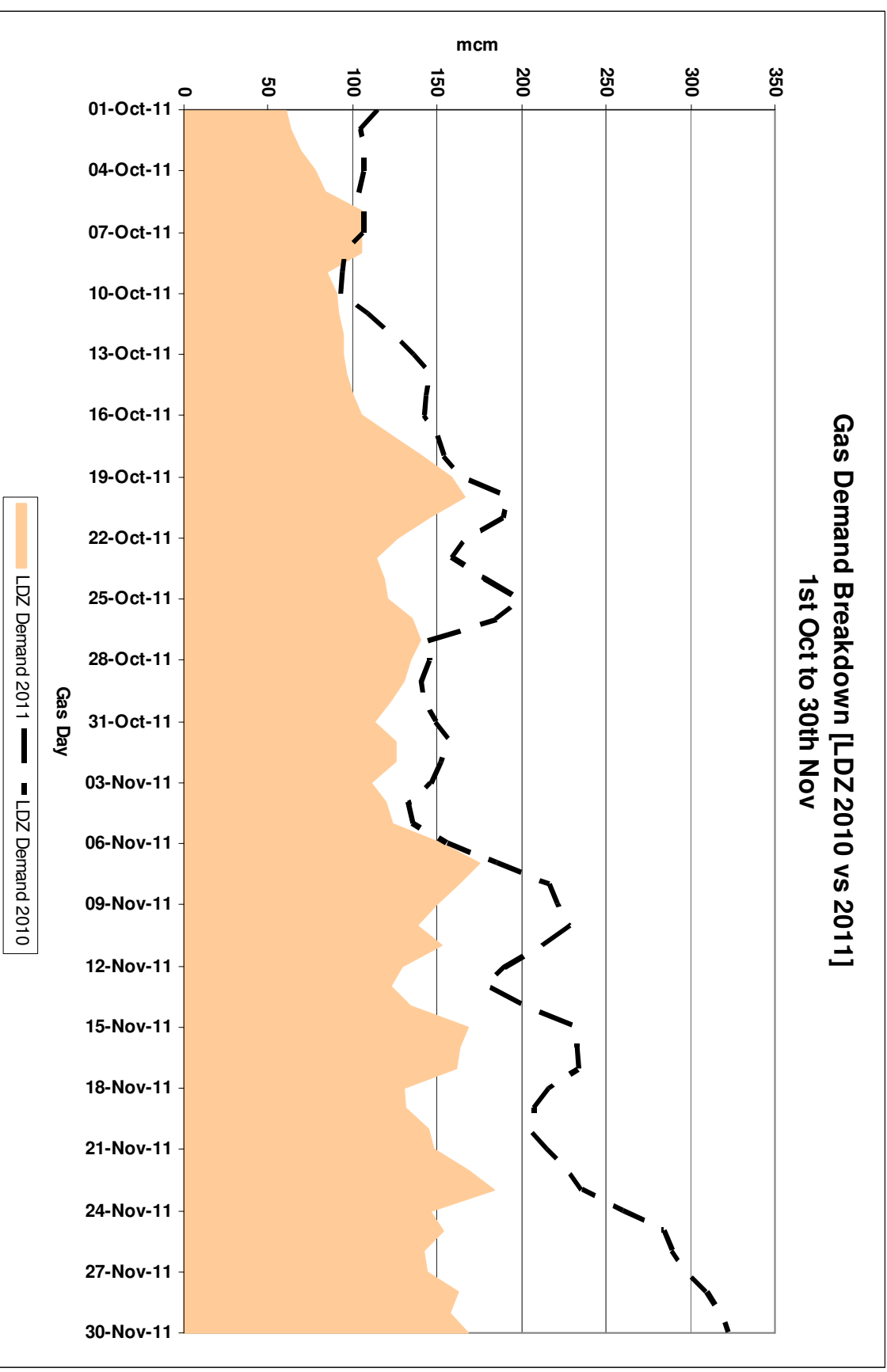
2010 Vs 2011



# LDZ Demand

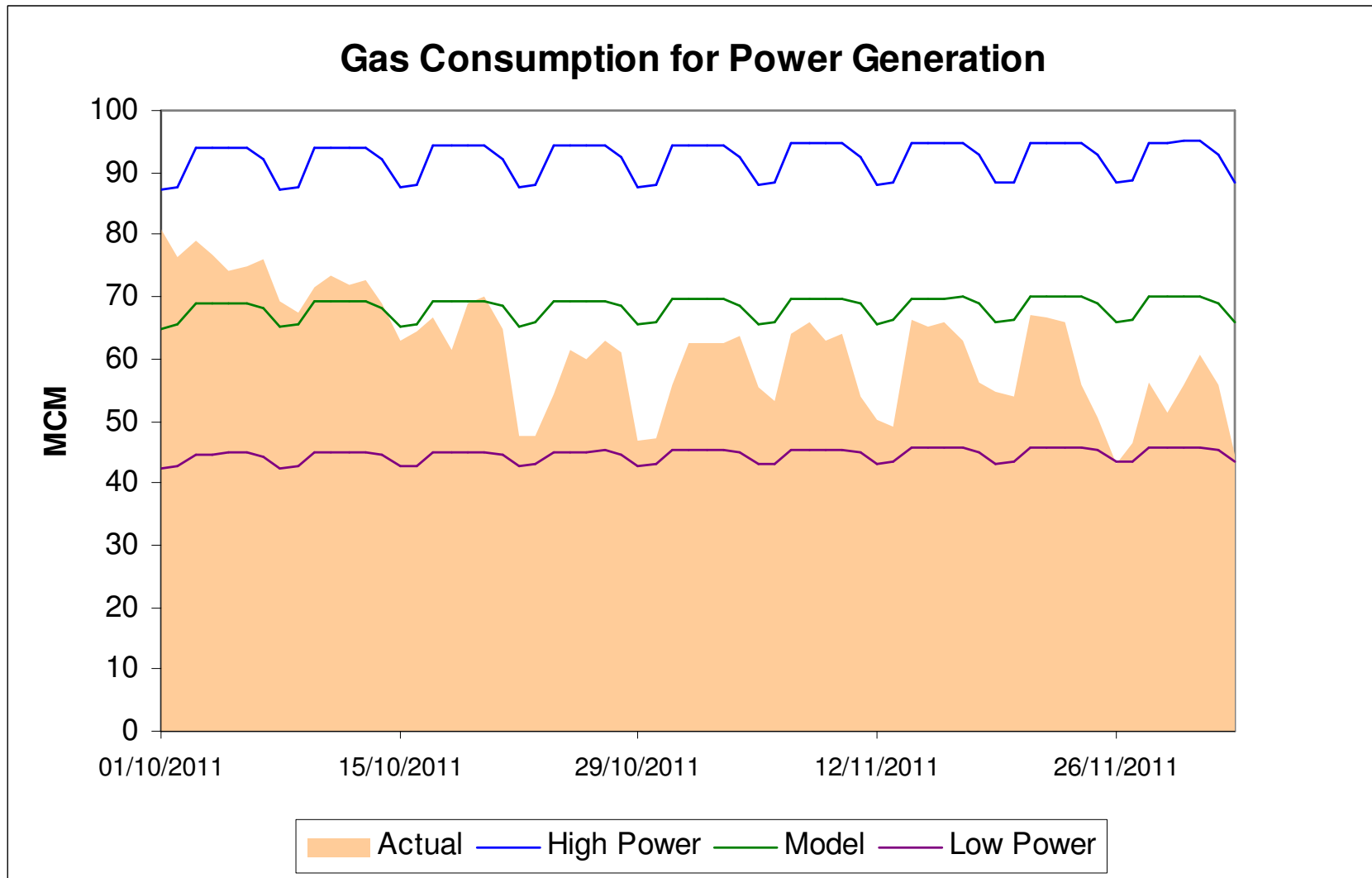
2010 Vs 2011

Gas Demand Breakdown [LDZ 2010 vs 2011]  
1st Oct to 30th Nov



# Power Generation

1st October 2011 to 30<sup>th</sup> November 2011



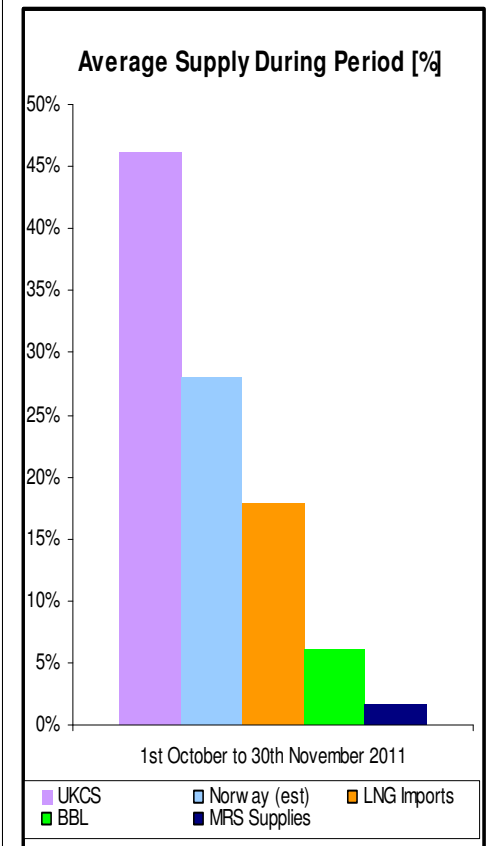
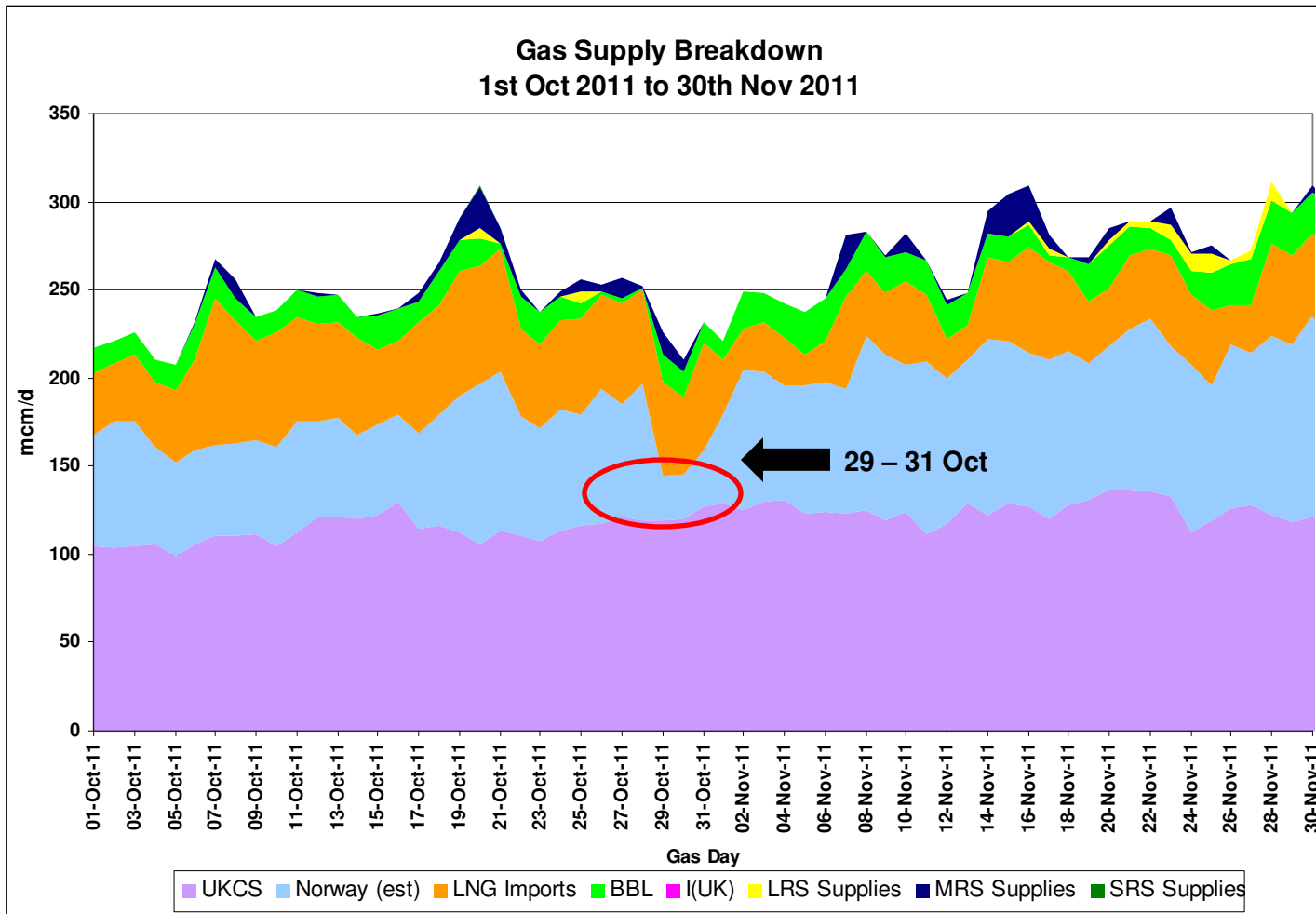


# Supplies



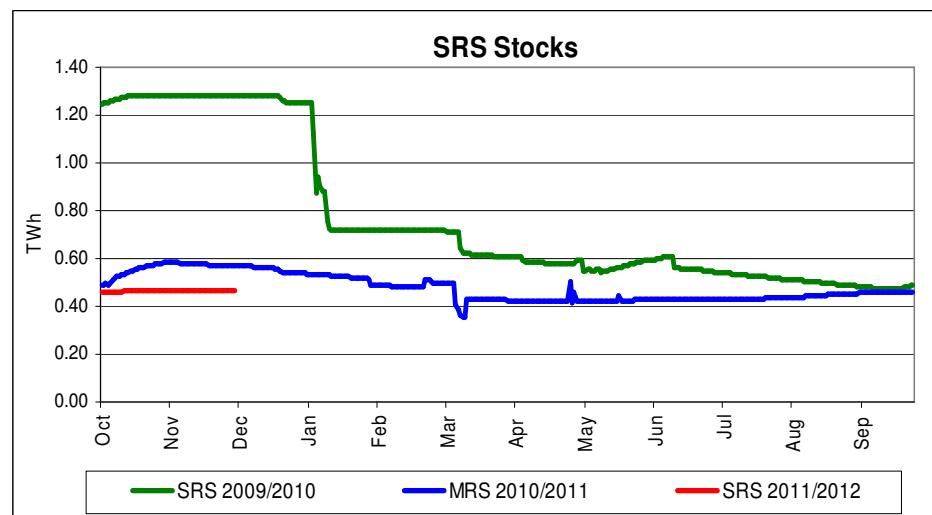
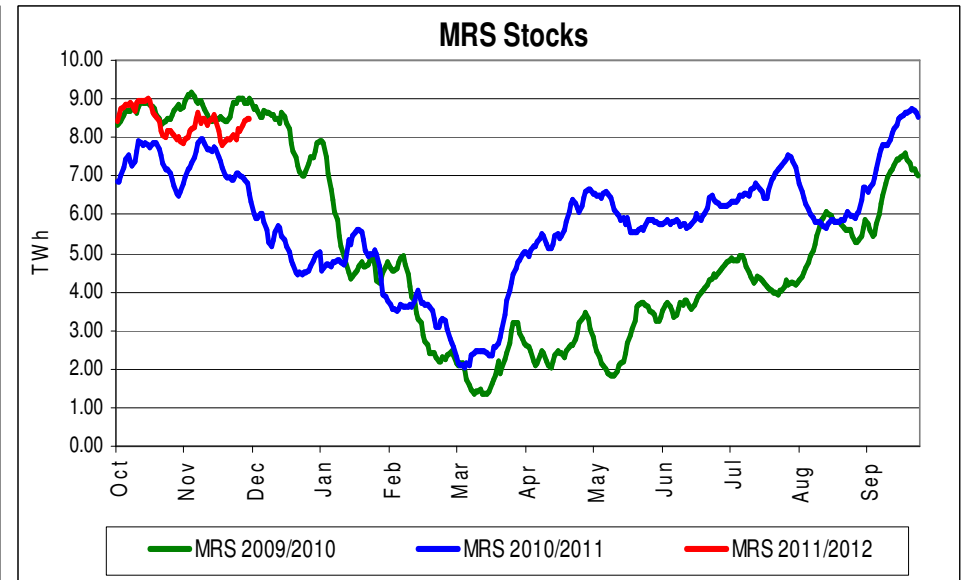
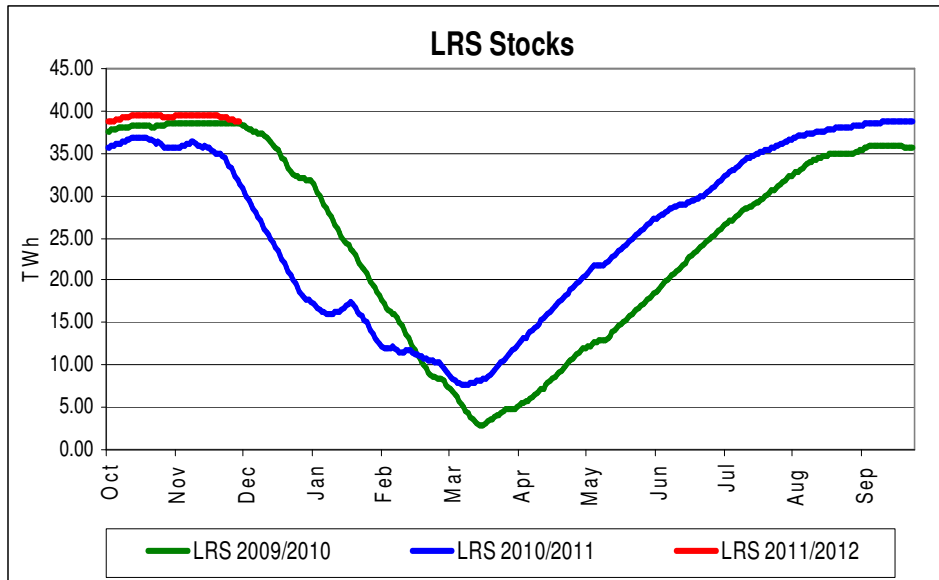
# Gas Supply Breakdown

1<sup>st</sup> Oct 2011 to 30<sup>th</sup> Nov 2011



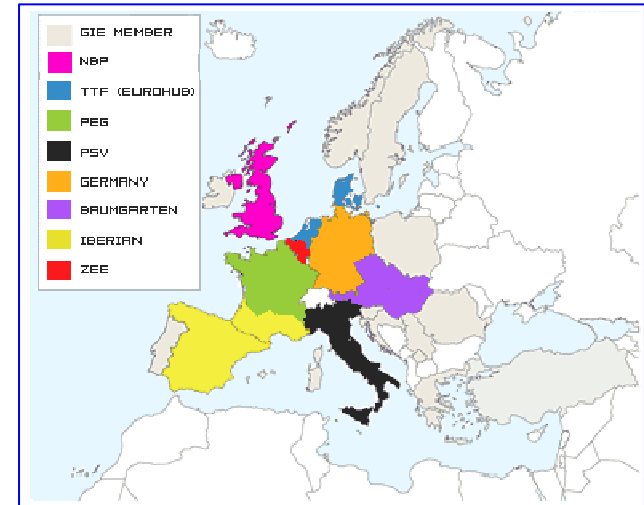
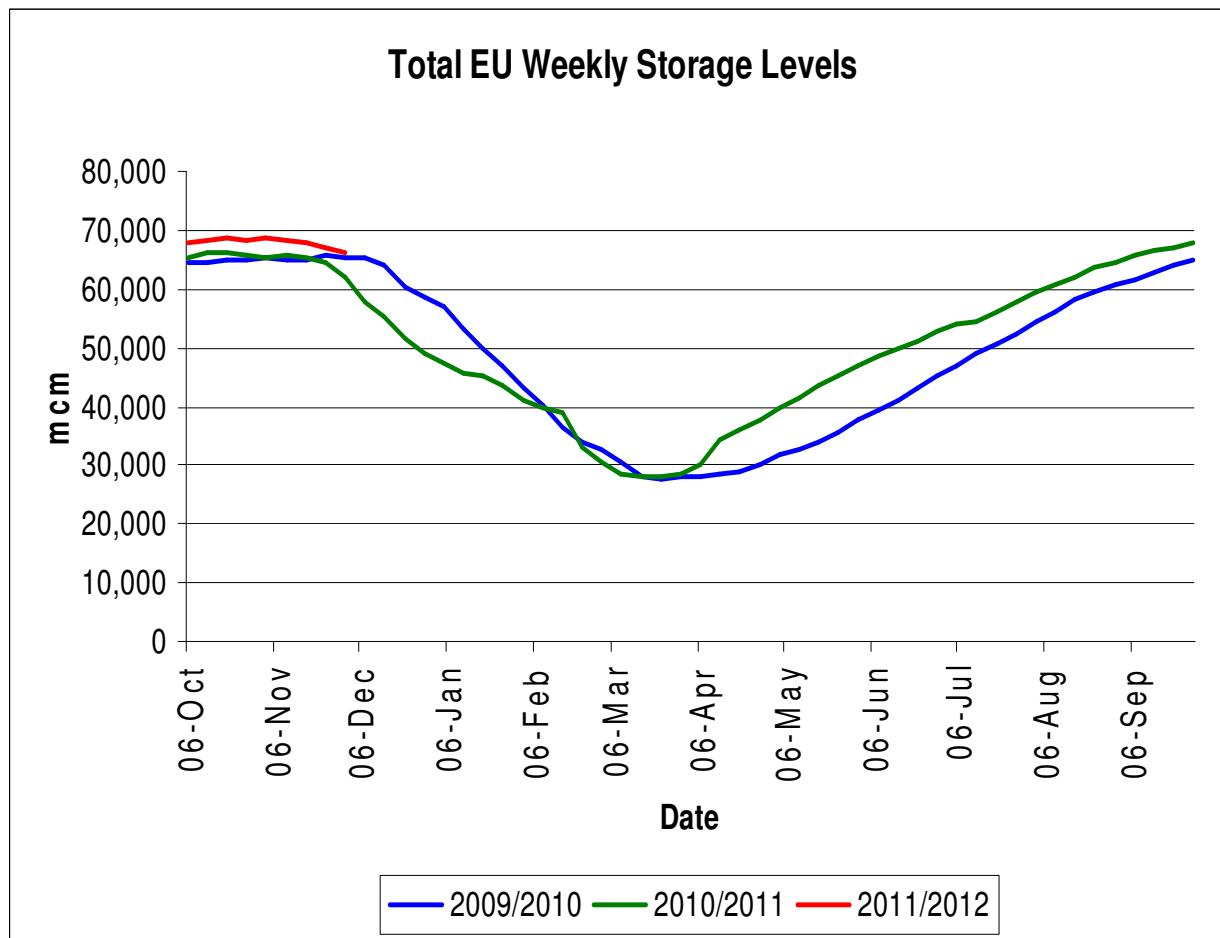
# Storage Stocks - UK

From 1<sup>st</sup> October 2011 to 30<sup>th</sup> November 2011



# Storage Stocks - EU

From 1<sup>st</sup> October 2010 to 30<sup>th</sup> November 2011



**Stocklevel Status at 06:00CET on Thursday 01.12.11**

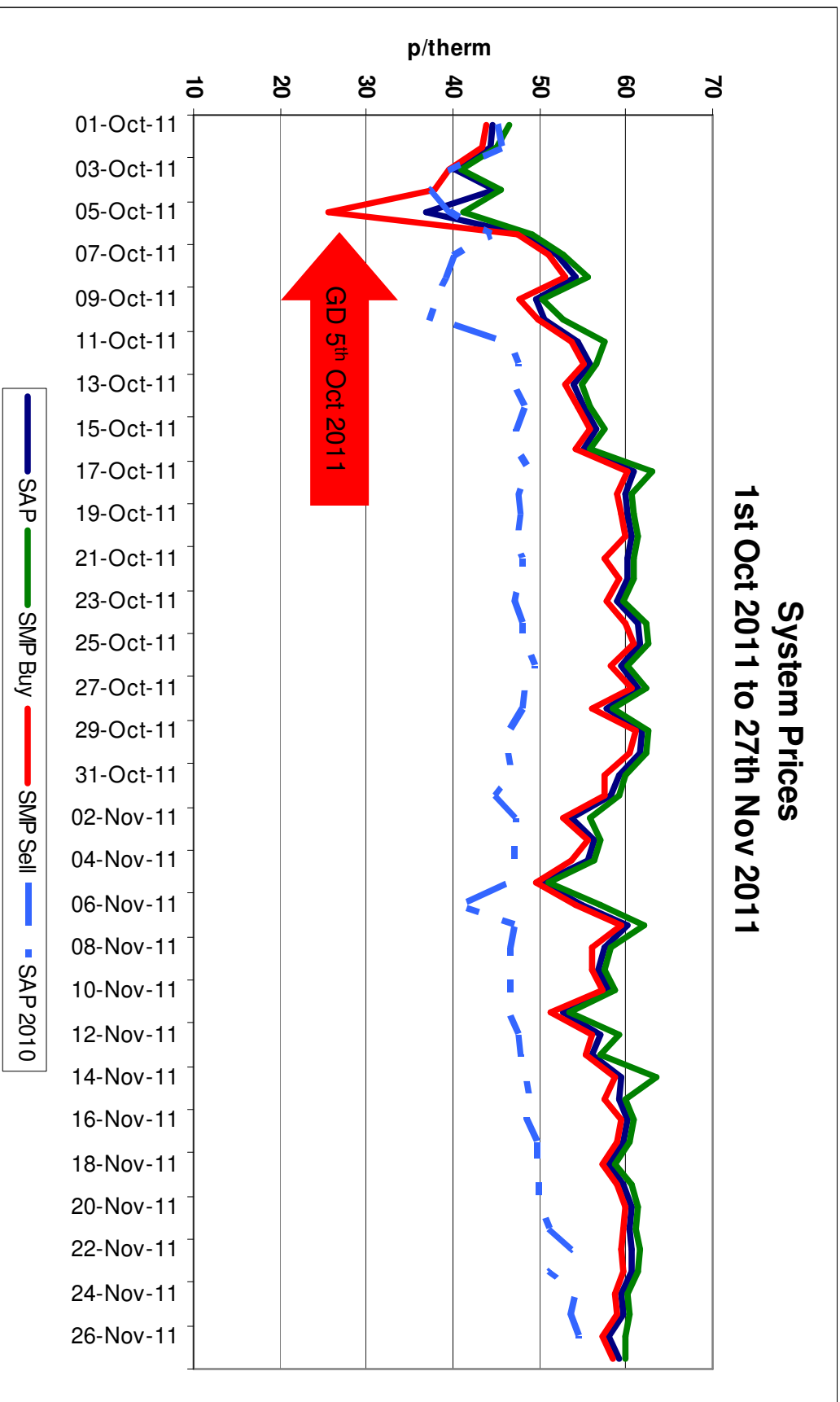
Hub Area	Stock Level (mcm)	% Full
Baumgarten	13783.27	81.70%
Germany	18596.92	89.64%
Iberian	2329.11	91.80%
NBP	4583.00	96.36%
France	10326.00	82.87%
PSV	14672.88	94.05%
TTF (Eurohub)	1818.54	87.01%
ZEE	635.41	93.44%
<b>Total Hubs</b>	<b>66745.13</b>	<b>89.61%</b>

# Transporter Actions and Neutrality



# System Prices

1st October 2011 to 27th November 2011

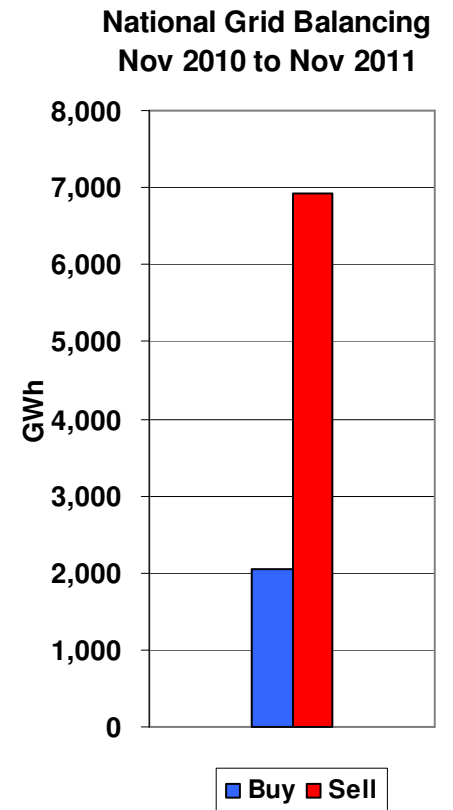
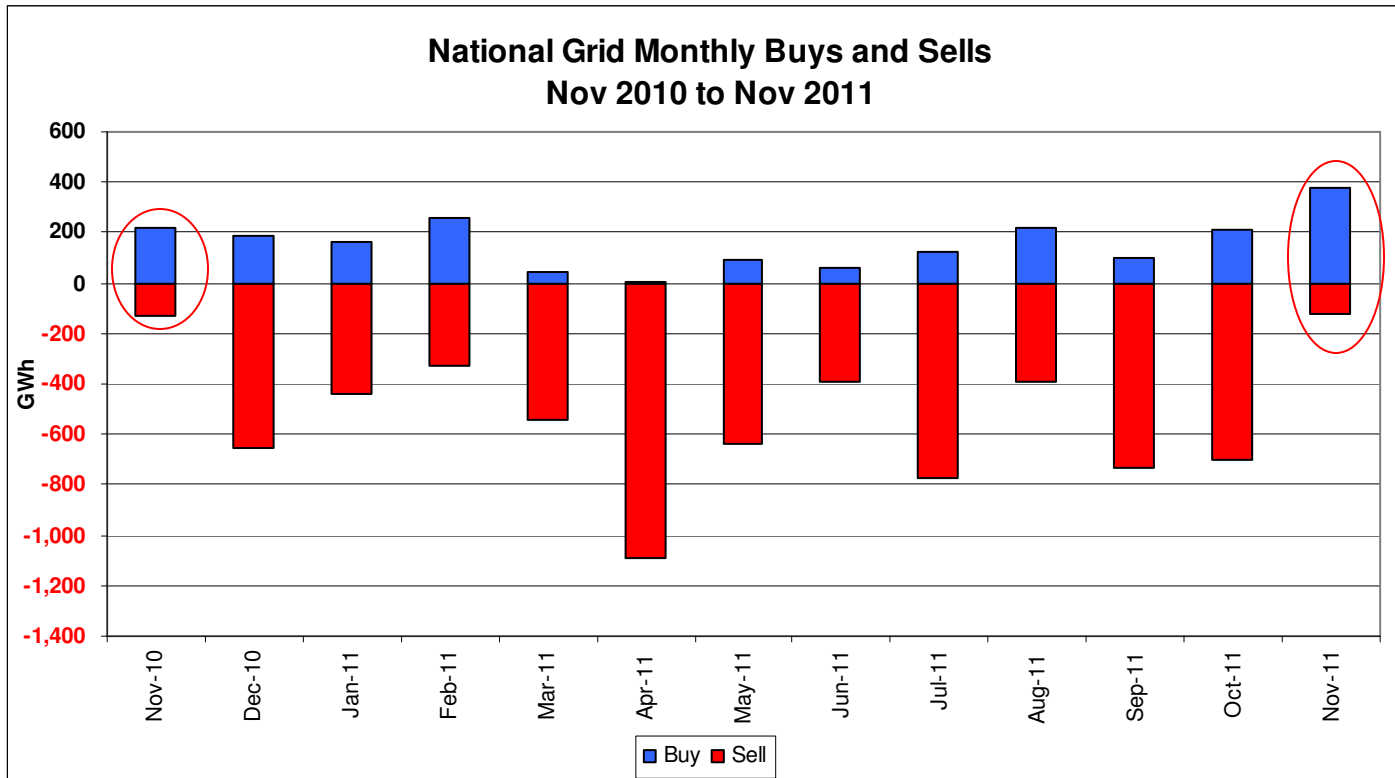


# Transporter Energy Traded on the OCM

Buys and Sells by Month  
From Nov 2010 to Nov 2011

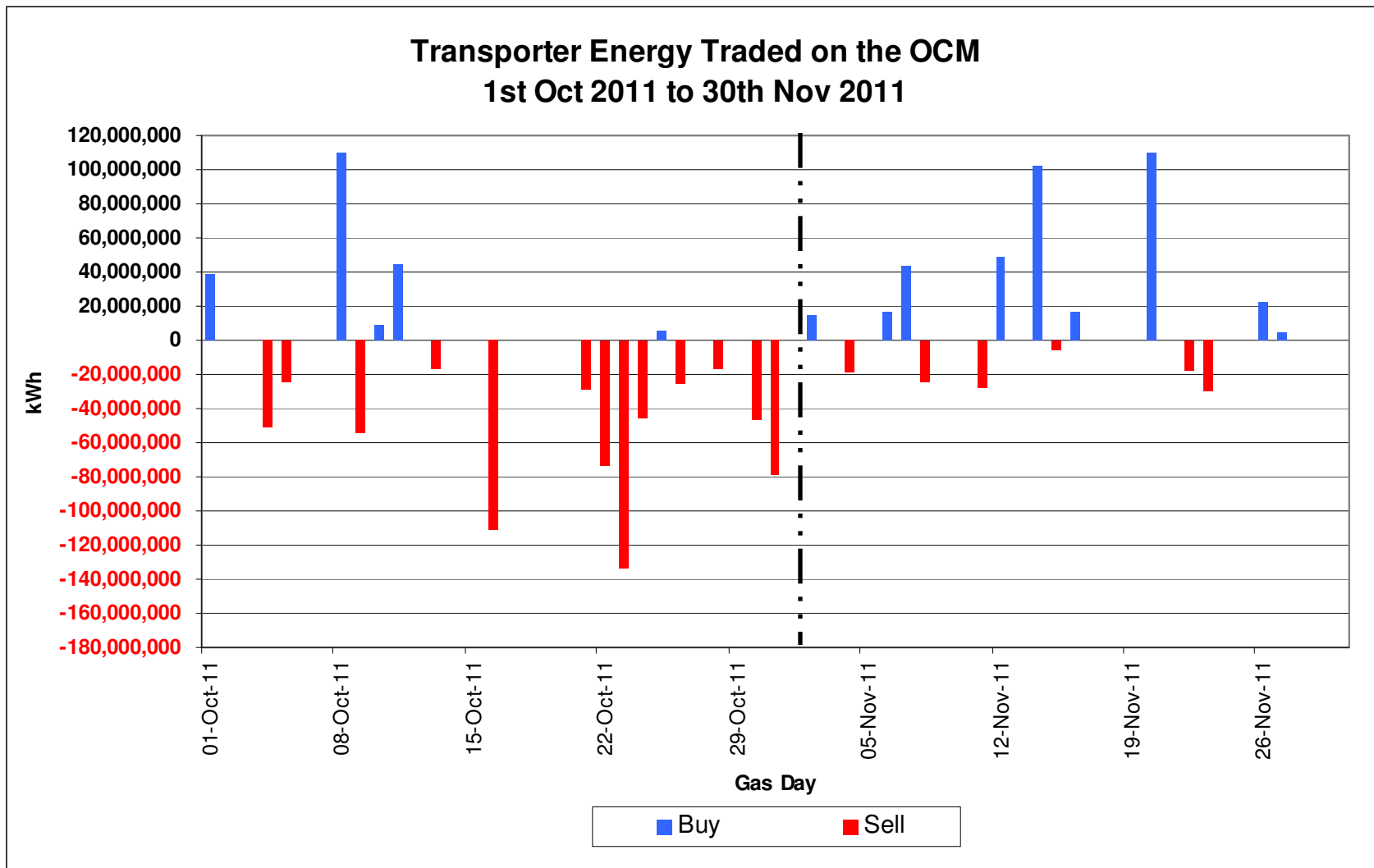


THE POWER OF ACTION



# Transporter Energy Traded on the OCM

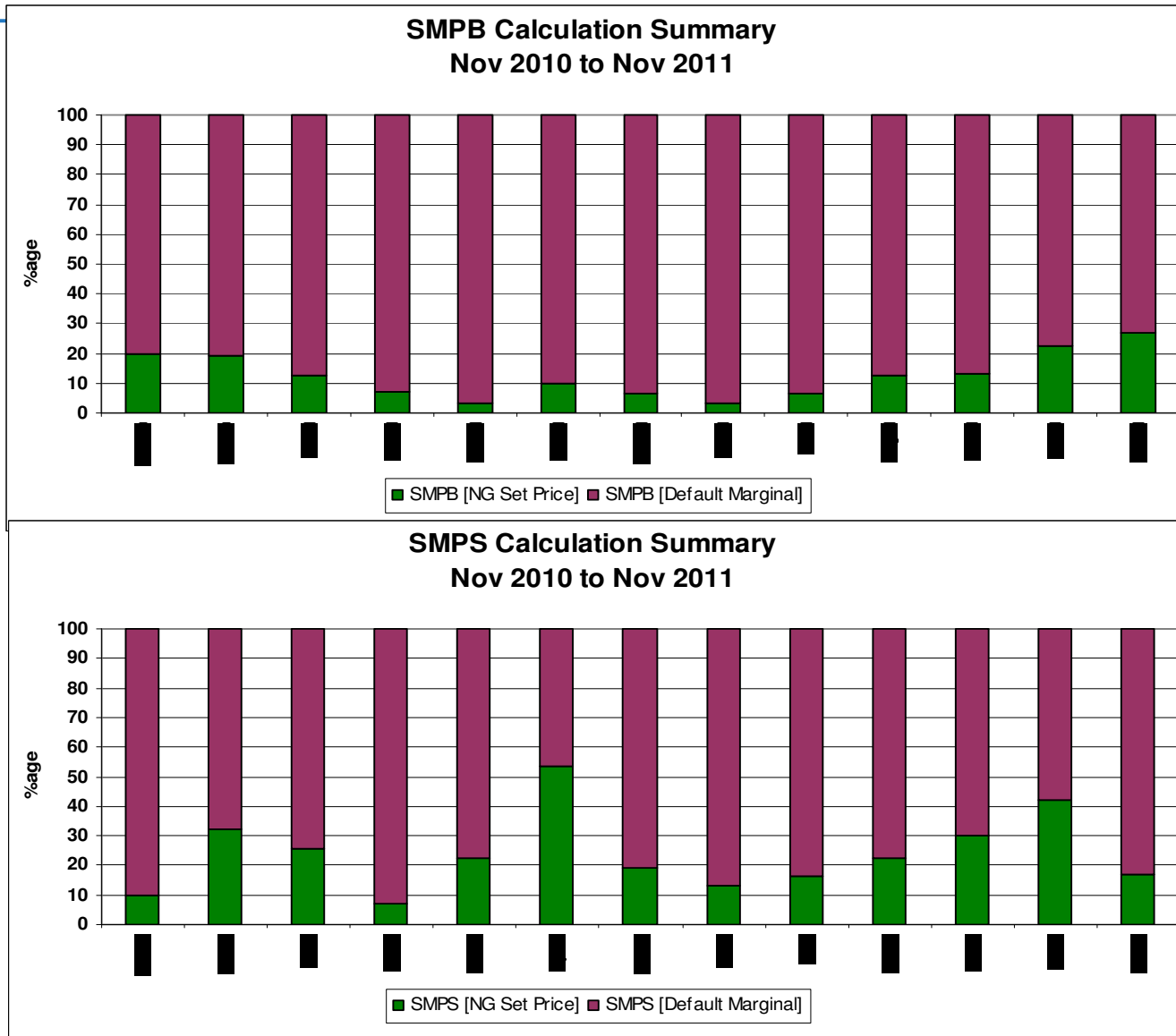
Buys and Sells by Day  
From 1<sup>st</sup> Oct 2011 to 30<sup>th</sup> Nov 2011





# Days of Default SMP Prices

From Nov 2010 to Nov 2011



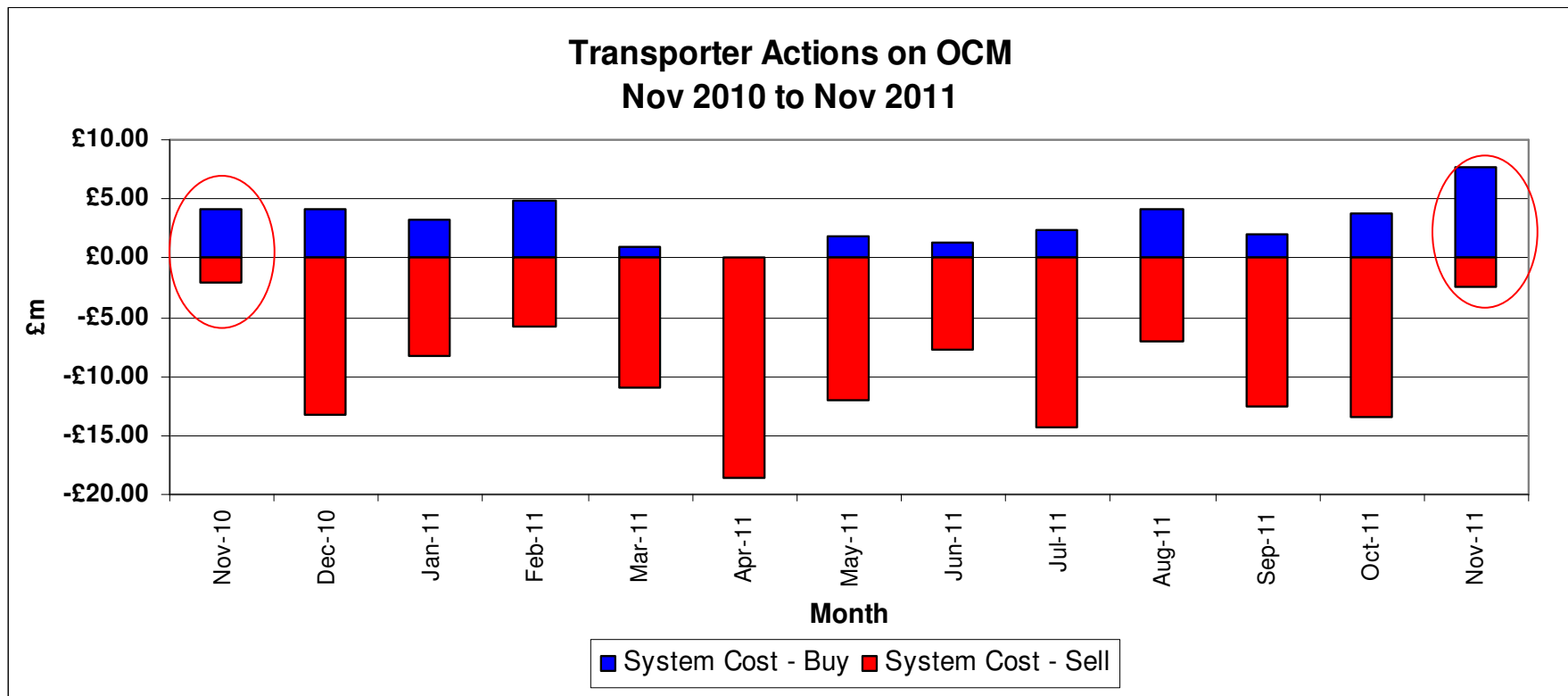
# Transporter Actions on the OCM Mechanism

## Revenues / Costs

THE POWER OF ACTION

From 1<sup>st</sup> October 2011 to 30<sup>th</sup> November 2011

	Quantity TWh	Average p/kWh	Price Therms	Cost £m
System Buy	0.59	1.96	57.52	£11.52
System Sell	-0.83	1.9	55.78	-£15.82
<b>Net Position</b>	<b>-0.24</b>			<b>-£4.30</b>

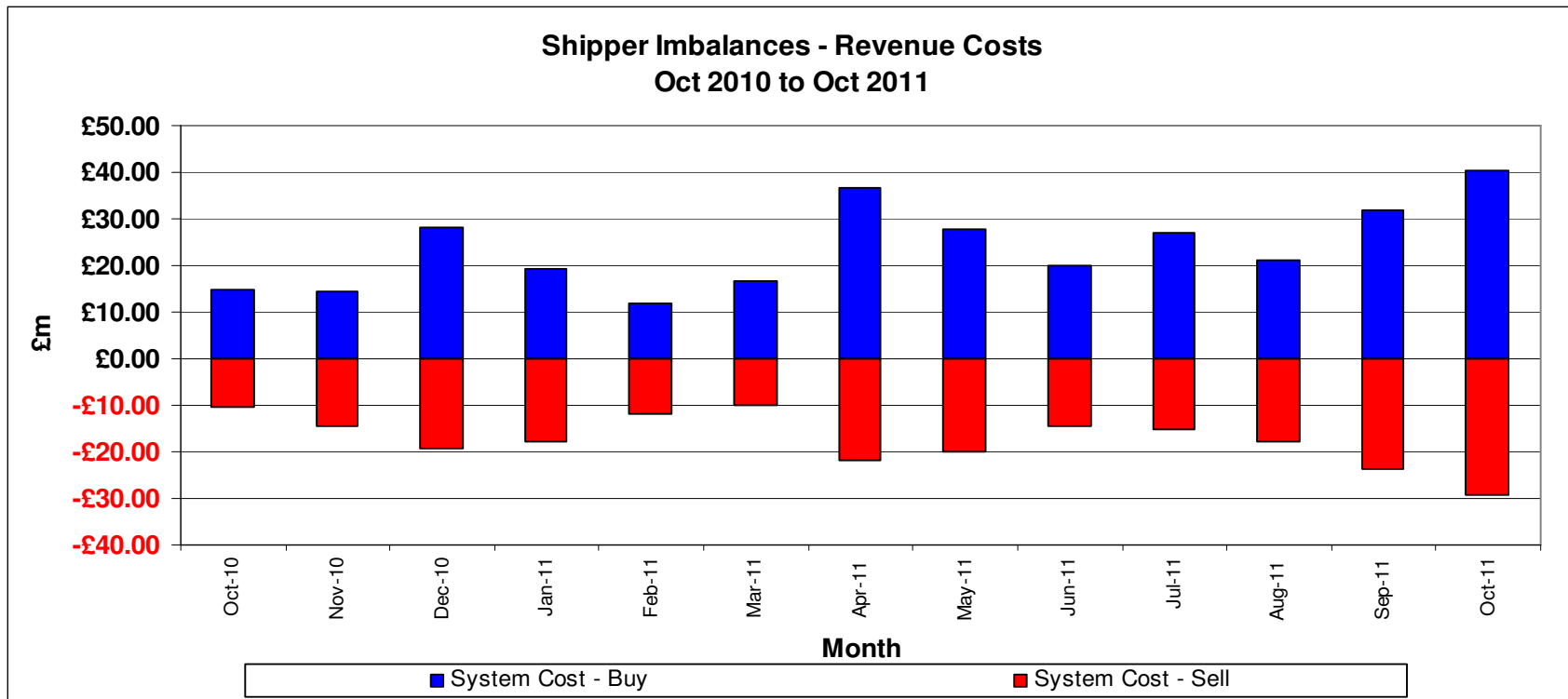


# Shipper Imbalance

## Revenues / Costs

From 1<sup>st</sup> October 2011 to 31<sup>st</sup> October 2011

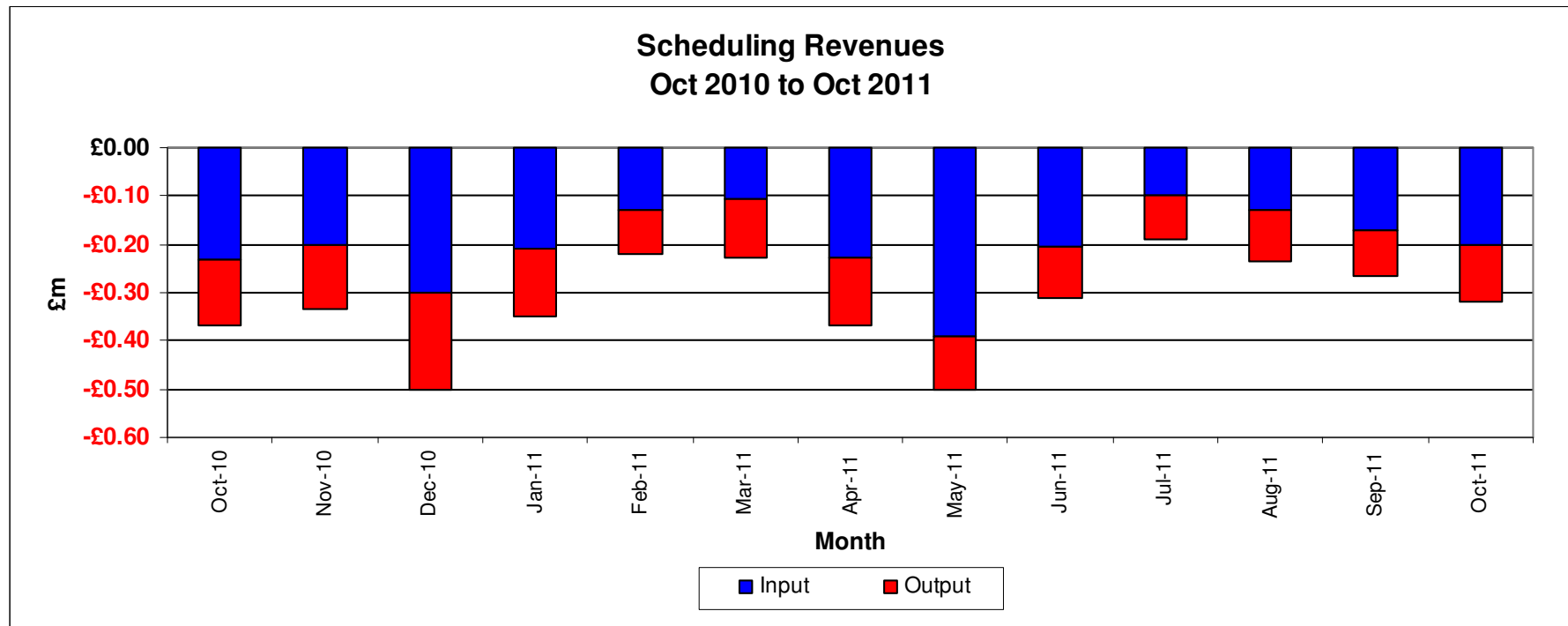
	Quantity (TWH)	Average Price P/KWh	Average price P/Therm	Cost £m
<b>System Buy</b>	2.25	1.80	52.67	£40.41
Shipper Over Delivery/Cost to Neutrality				
<b>System Sell</b>	-1.54	1.89	55.23	-£29.12
Shipper Under Delivery/Revenue to Neutrality				
<b>Net Position</b>	0.71			£11.29



# Scheduling Revenues

From 1<sup>st</sup> October 2011 to 31<sup>st</sup> October 2011

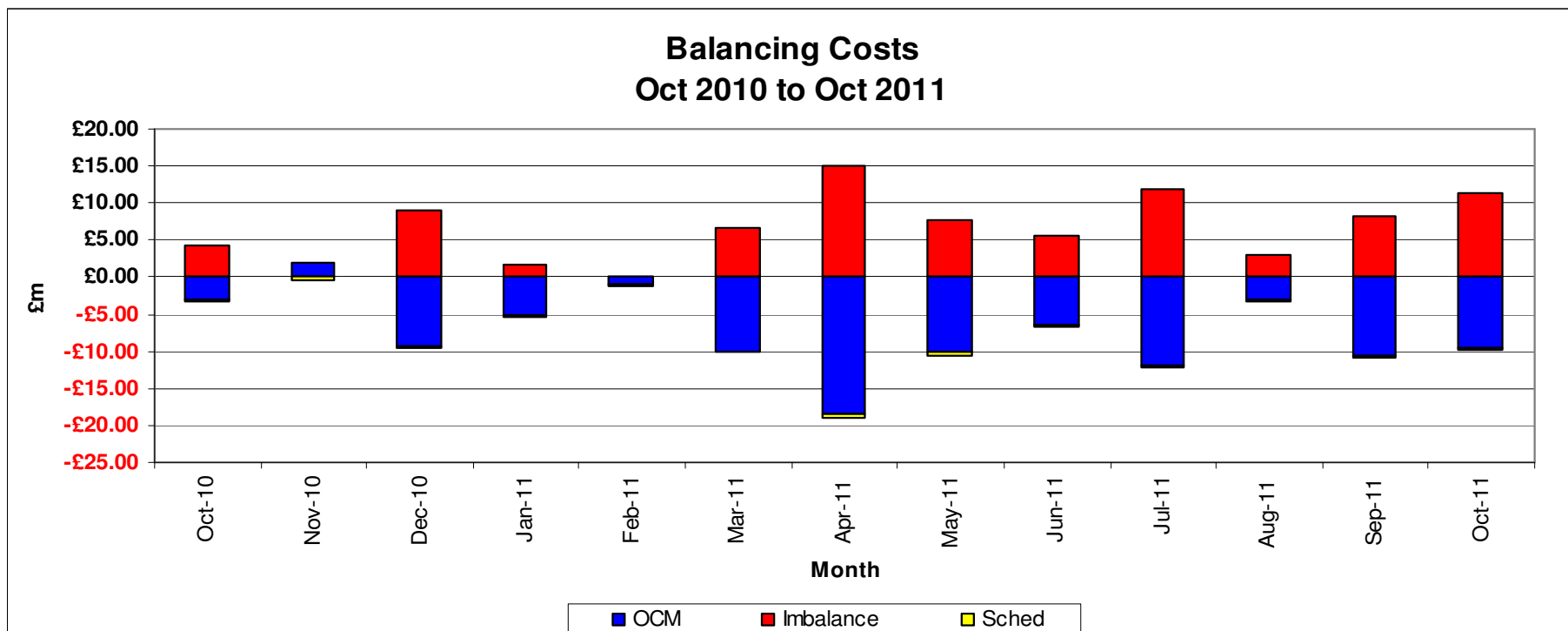
	<b>Cost £m</b>
<b>Input</b>	<b>-£0.20</b>
<b>Output</b>	<b>-£0.12</b>
<b>Total</b>	<b>-£0.32</b>



# Balancing Costs

From 1<sup>st</sup> October 2011 to 31<sup>st</sup> Oct 2011

Transporter Actions on OCM	£m <b>-£9.59</b>
Imbalance Charge	<b>11.29</b>
Scheduling Charge	<b>-£0.32</b>
<b>Balancing Cost</b>	<b>£1.38</b>

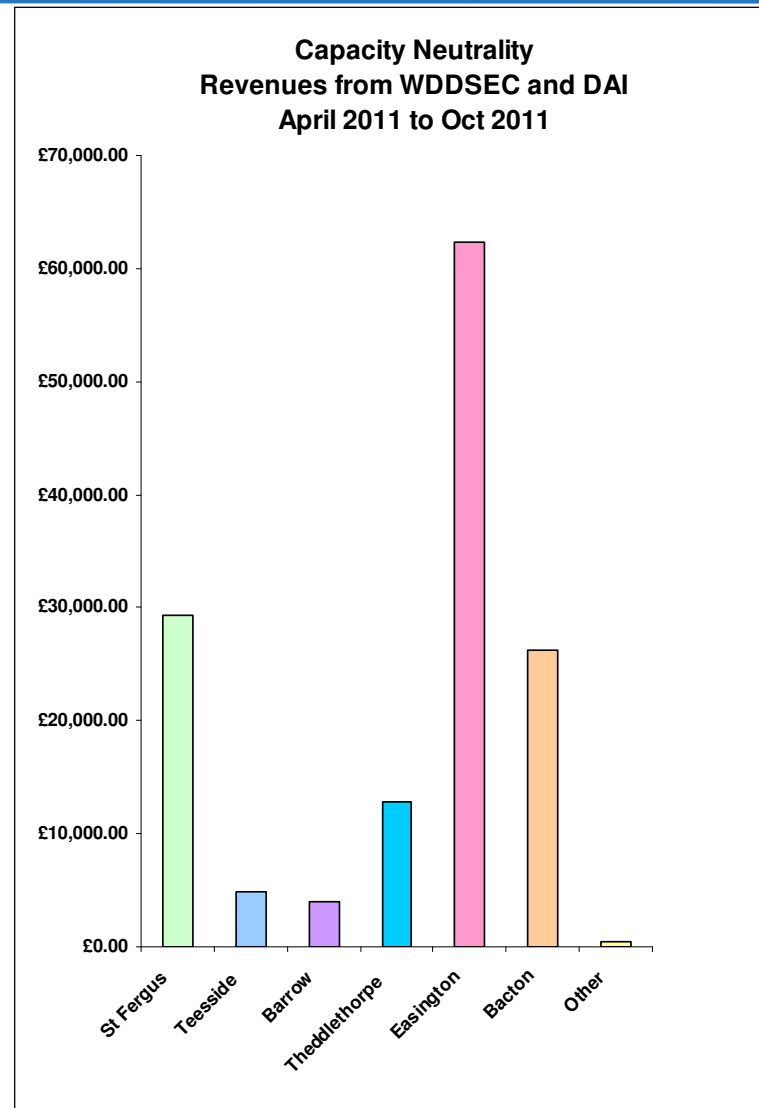


# Capacity Neutrality

Revenues from WDDSEC and DAI

From 1<sup>st</sup> April 2010 to 31<sup>st</sup> October 2011

<b>St Fergus</b>	£29,365.89
<b>Teesside</b>	£4,831.30
<b>Barrow</b>	£3,985.00
<b>Theddlethorpe</b>	£12,867.60
<b>Easington</b>	£62,385.42
<b>Bacton</b>	£26,292.26
<b>Other</b>	£470.31
<b>Net Revenue</b>	<b>-£140,197.78</b>



# Capacity Neutrality

## Prompt Buy Backs

From 1<sup>st</sup> April 2011 to 31<sup>st</sup> October 2011

<b>ASEP</b>	<b>Cost</b>	<b>No. of Days</b>	<b>Energy (kWh)</b>
St.Fergus	£0.00	0	0
Teesside	£0.00	0	0
Barrow	£0.00	0	0
Theddlethorpe	£0.00	0	0
Easington	£0.00	0	0
Bacton	£0.00	0	0
<b>TOTAL</b>	<b>£0.00</b>	<b>0</b>	<b>0</b>

# Capacity Neutrality

## Capacity Management Agreement (Including RMTTSEC)

From 1<sup>st</sup> April 2011 to 31<sup>st</sup> October 2011

---

Month	Cost
Apr-11	£0.00
May-11	£0.00
Jun-11	£0.00
Jul-11	£0.00
Aug-11	£0.00
Sep-11	£0.00
Oct-11	£0.00
Nov-11	
Dec-11	
Jan-12	
Feb-12	
Mar-12	
<b>TOTAL</b>	£0.00



# Capacity Neutrality

## Revenues from Locational Sells and PRI Charges

From 1<sup>st</sup> April 2011 to 31<sup>st</sup> October 2011

Month	Revenue
Apr-11	-£389,844.80
May-11	-£799,666.50
Jun-11	£0.00
Jul-11	£0.00
Aug-11	£0.00
Sep-11	£0.00
Oct-11	£0.00
Nov-11	
Dec-11	
Jan-12	
Feb-12	
Mar-12	
<b>TOTAL</b>	<b>-£1,189,511.30</b>

# Capacity Neutrality

## Revenues from Entry Cap Overruns and Non-Obligated Sales

From 1<sup>st</sup> April 2011 to 31<sup>st</sup> October 2011

Month	Entry Capacity	Non-Obligated Sales
Apr-11	-£10,737.90	£0.00
May-11	-£35,509.78	£0.00
Jun-11	-£14,936.59	£0.00
Jul-11	-£22,040.97	£0.00
Aug-11	-£759.84	£0.00
Sep-11	-£1,541.81	£0.00
Oct-11	-£31,319.55	£55,973.60
Nov-11		
Dec-11		
Jan-12		
Feb-12		
Mar-12		
<b>TOTAL</b>	<b>-£116,846.44</b>	<b>£55,973.60</b>

# Capacity Neutrality Net Cost / Revenue

From 1<sup>st</sup> April 2011 to 31<sup>st</sup> October 2011

Month	Revenue
WDDSEC/DAI Revenue	-£140,197.78
Buy Back Costs	£0.00
Capacity management Agreement	£0.00
Entry Capacity Overrun Revenue	-£116,846.44
Non-Obligated Sales Revenue	-£55,973.60
Revenue from Locational Sells and PRI Charges	-£1,189,511.30
<b>Net Revenue</b>	<b>-£1,502,529.12</b>