

Capacity Update to Ops Forum

December 2015

Contents

- Auction timetable
- Capacity release at Bacton UKCS
- Update on Gemini/PRISMA system issues

Auction Timetable

- Auctions are published to Gemini from individual TSO systems and appear on Gemini when all data received
 - Auctions may appear later than normal if one TSO delays publishing or fails to publish
- Daily auction bid windows are open according to a set timetable (UK times)
 - 15:30 Firm Day Ahead
 - 16:30 Interruptible Day Ahead
 - 18:00 – 01:30 First Within Day window
 - HH:00 – HH:30 further Within Day windows until 0030

Issues to date in running auctions

- Day ahead auctions at Bacton for Gas Day 1st November were published on PRISMA relatively late as IUK did not participate (*auction ran as scheduled*)
- IPDISEC at Bacton for Gas Day 5th November did not allocate due to a PRISMA fault
- IPDONEX for Gas Day 15th November at Bacton IUK did not allocate due to a PRISMA fault
- IPRMSEC for December at Bacton was published three days late as an adjacent TSO failed to publish their data by the deadline (*auction ran as scheduled*)
- All other auctions have run successfully (> 3000)

Capacity Release at Bacton UKCS

- Background
- Outcome of MOD 501V process
- Release of Interruptible Capacity
- Release of Within Day Firm Capacity

Background

- National Grid's capacity release obligations have been affected by Ofgem's direction of February 15th 2015 which 'split' the Bacton baseline between Bacton IP and Bacton UKCS
 - Bacton IP: 1,297.8 GWh/d
 - Bacton UKCS 485.6 GWh/d
- Existing capacity bookings have been allocated to the new Bacton ASEPs according to the process described in UNC Modification 501V

Outcome of MOD 501V process

	Bacton IP			Bacton UKCS		
	Monthly Release Obligation	Quantity Sold	Quantity Available	Monthly Release Obligation	Quantity Sold	Quantity Available
Month	GWh/d	GWh/d	GWh/d	GWh/d	GWh/d	GWh/d
Nov-15	1,297.8	460.5	837.3	485.6	414.6	71.0
Dec-15	1,297.8	460.6	837.2	485.6	414.4	71.2
Jan-16	1,297.8	689.7	608.1	485.6	485.6	0
Feb 16	1,297.8	689.7	608.1	485.6	485.6	0
Mar-16	1,297.8	689.7	608.1	485.6	485.6	0

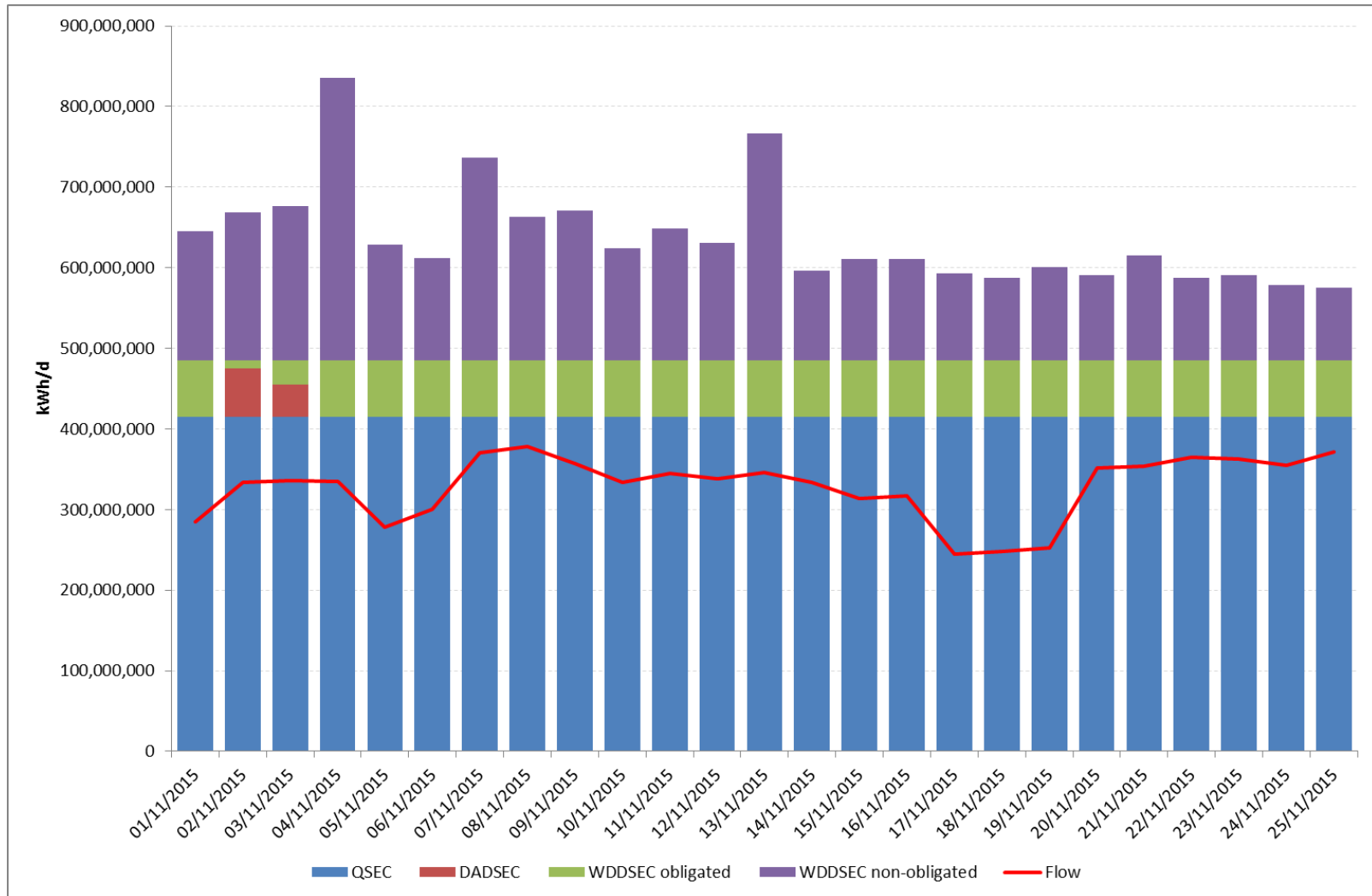
Release of Interruptible Capacity

- Existing rules apply (30 days' average unutilised firm)
- 'Bedding-in period' while in the 30 day period
- Initial approach was to allocate available interruptible in proportion to baseline allocation
- Quantity of capacity being released was reviewed once sufficient data at new ASEPs was available
- 'Business as usual' once 30 days' data available from early December

Release of Within Day Firm Capacity

- 'Business as usual' rules apply similar to other ASEPs where competition for capacity exists e.g. Easington
- Obligated capacity will be allocated in price order
- Non-obligated capacity will be released in response to the relevant incentives i.e. risk-reward decision

Firm capacity release at Bacton UKCS



Mechanisms to secure capacity

- Rolling monthly firm
 - Includes possibility of transfer and trade
- Day ahead firm
- Day ahead interruptible
- Within-day firm including non-obligated
- Secondary market

Update on Gemini/PRISMA system issues

- Outstanding issues – still being investigated
 - Non-zero reserve price at Bacton (Gemini/PRISMA issue)
 - Intermittent issue where Gemini is not updated with PRISMA within day capacity allocations (Gemini issue)
- Resolved issues
 - ‘Disappearing’ interruptible auctions – fixed in PRISMA
 - Gemini not being updated for IPWDDSEC/NEX allocated at 20:00 – fixed in Gemini
 - Within-day trades after 00:00 – fixed in PRISMA