

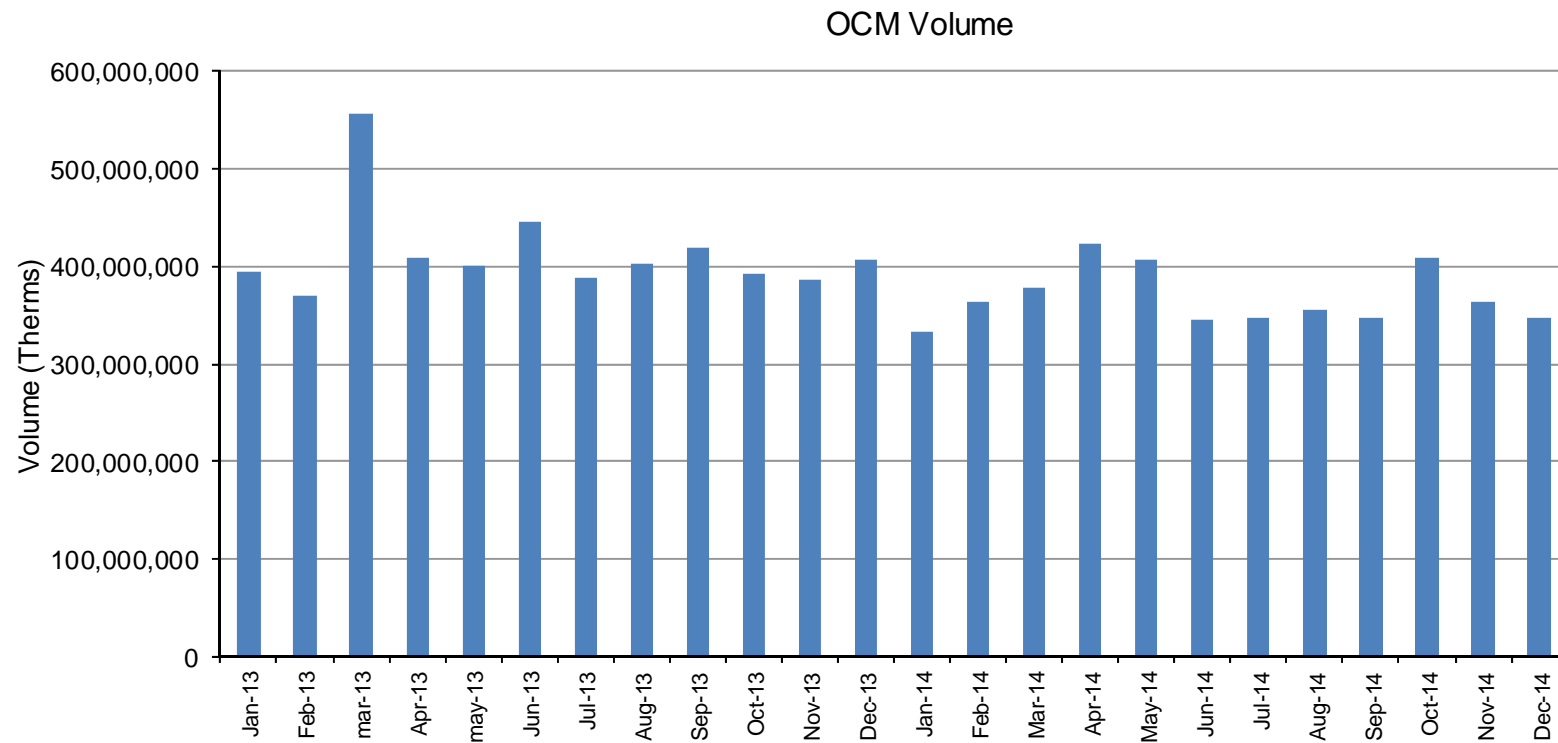


ICE Endex UK Gas update

January 2015, London

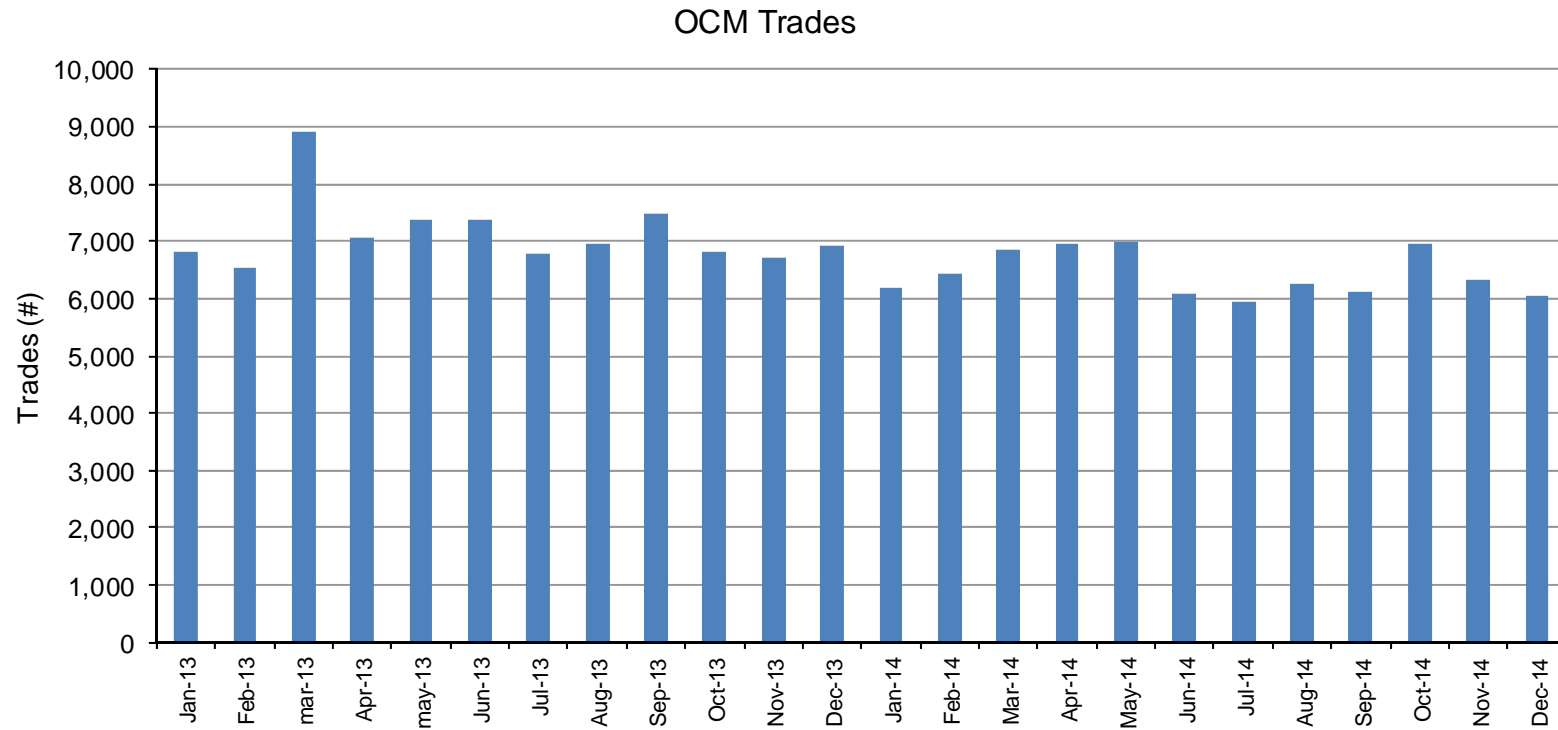
Volumes per month 2014

Average monthly volume: 391,355,667



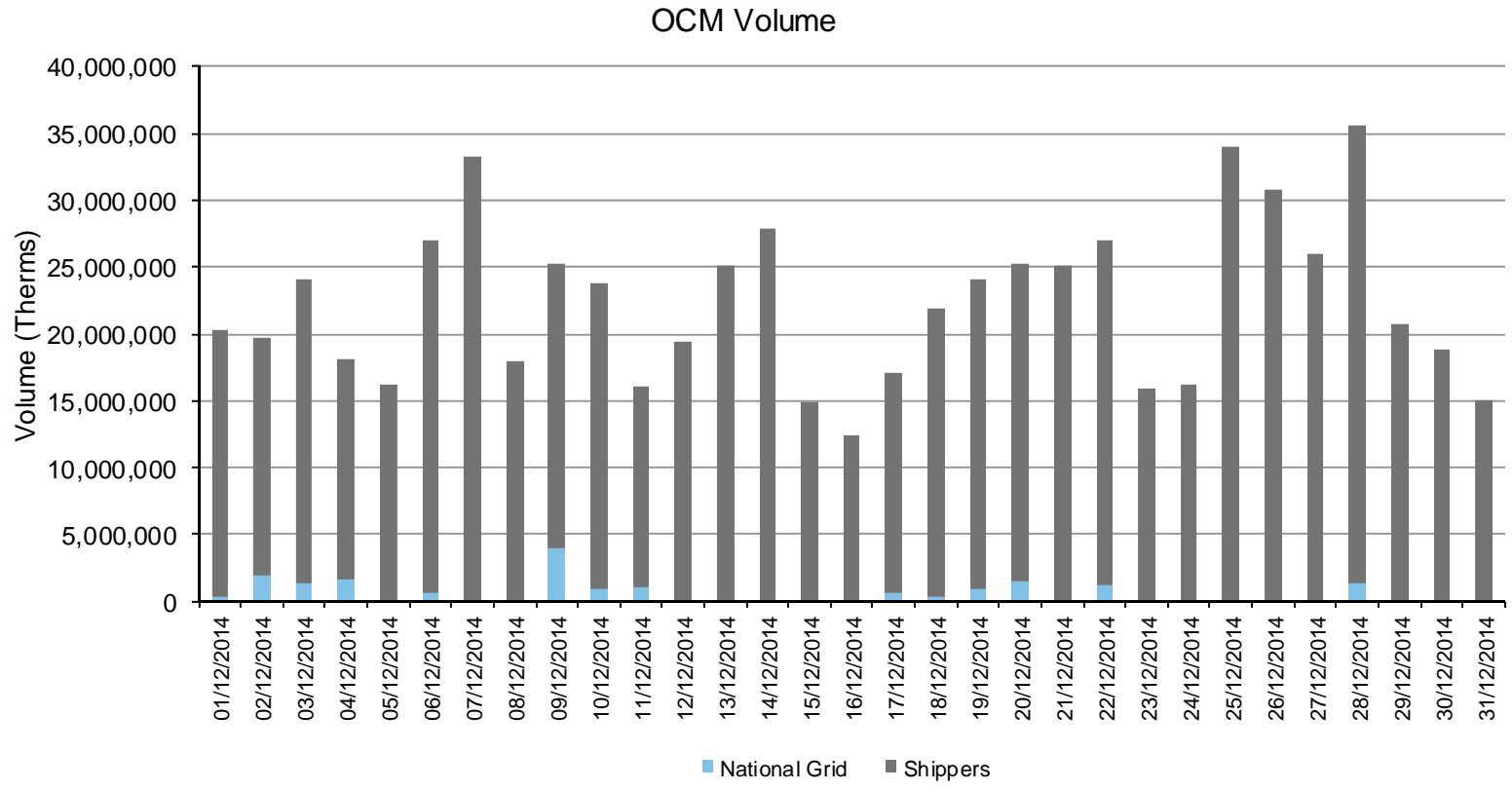
Trades per month 2014

Average monthly number of trades: 6,788



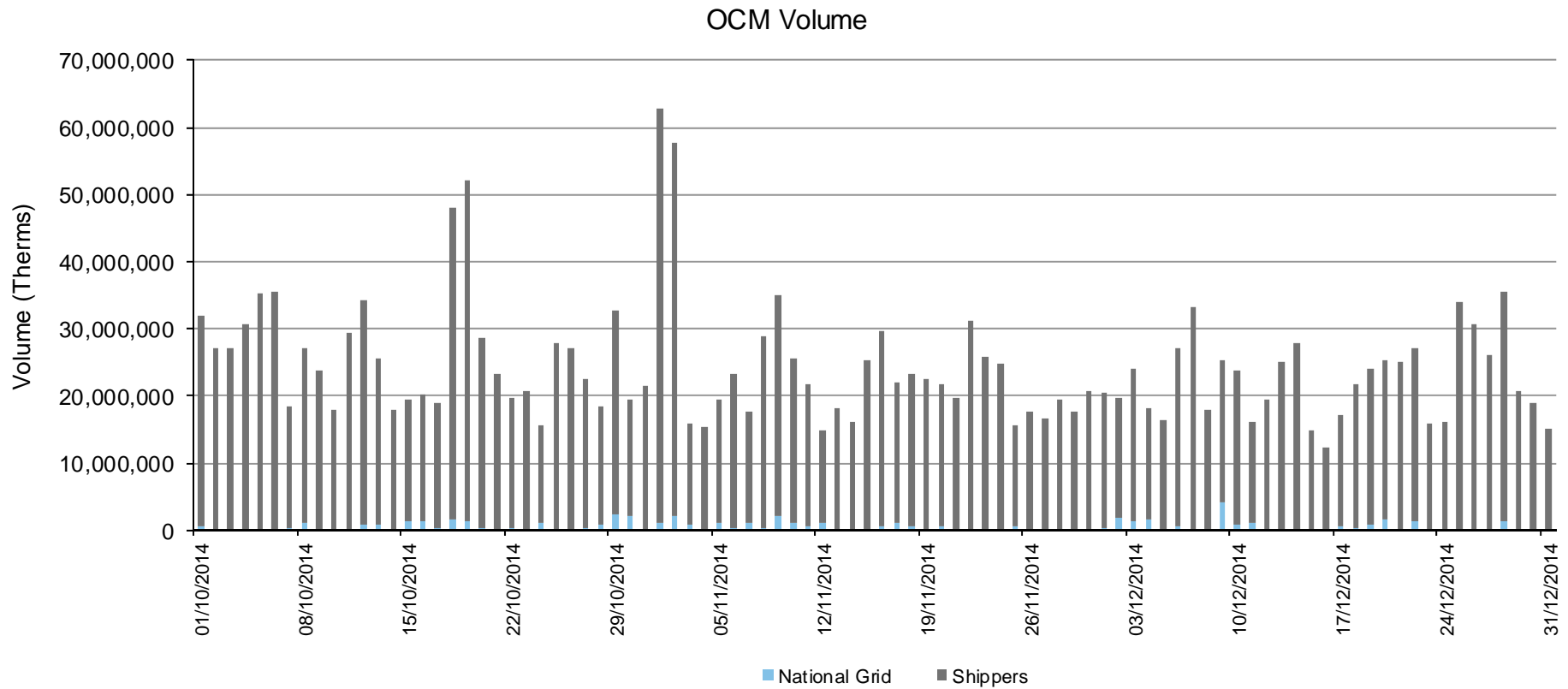
Daily Volumes December 2014

Highest volume: 17,770,000 (28 Dec)
 Lowest volume: 6,182,000 (16 Dec)
 Average total daily vol: 11,208,613
 NGC share of volume: 2.57%

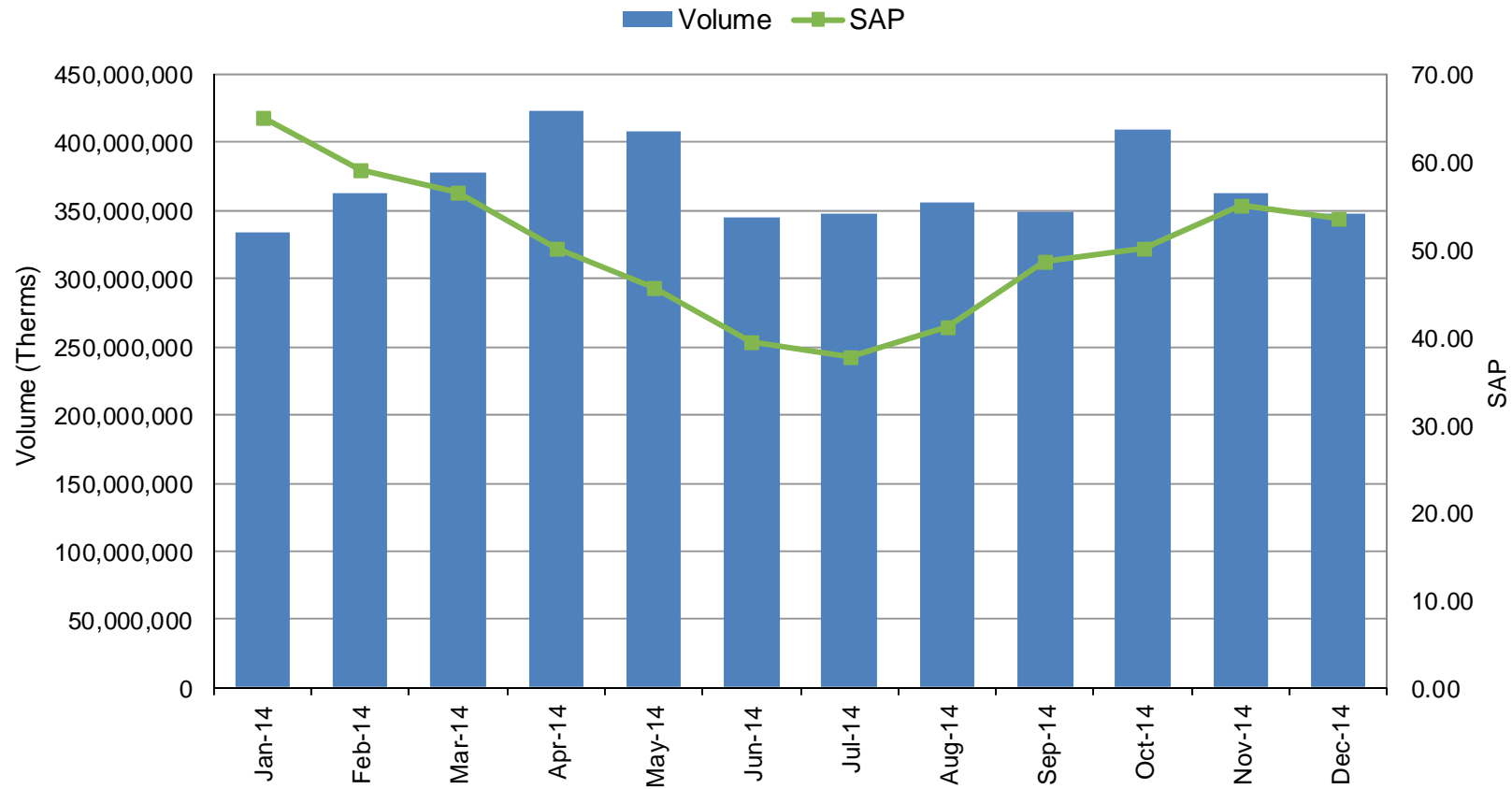


Daily volumes Q4 2014

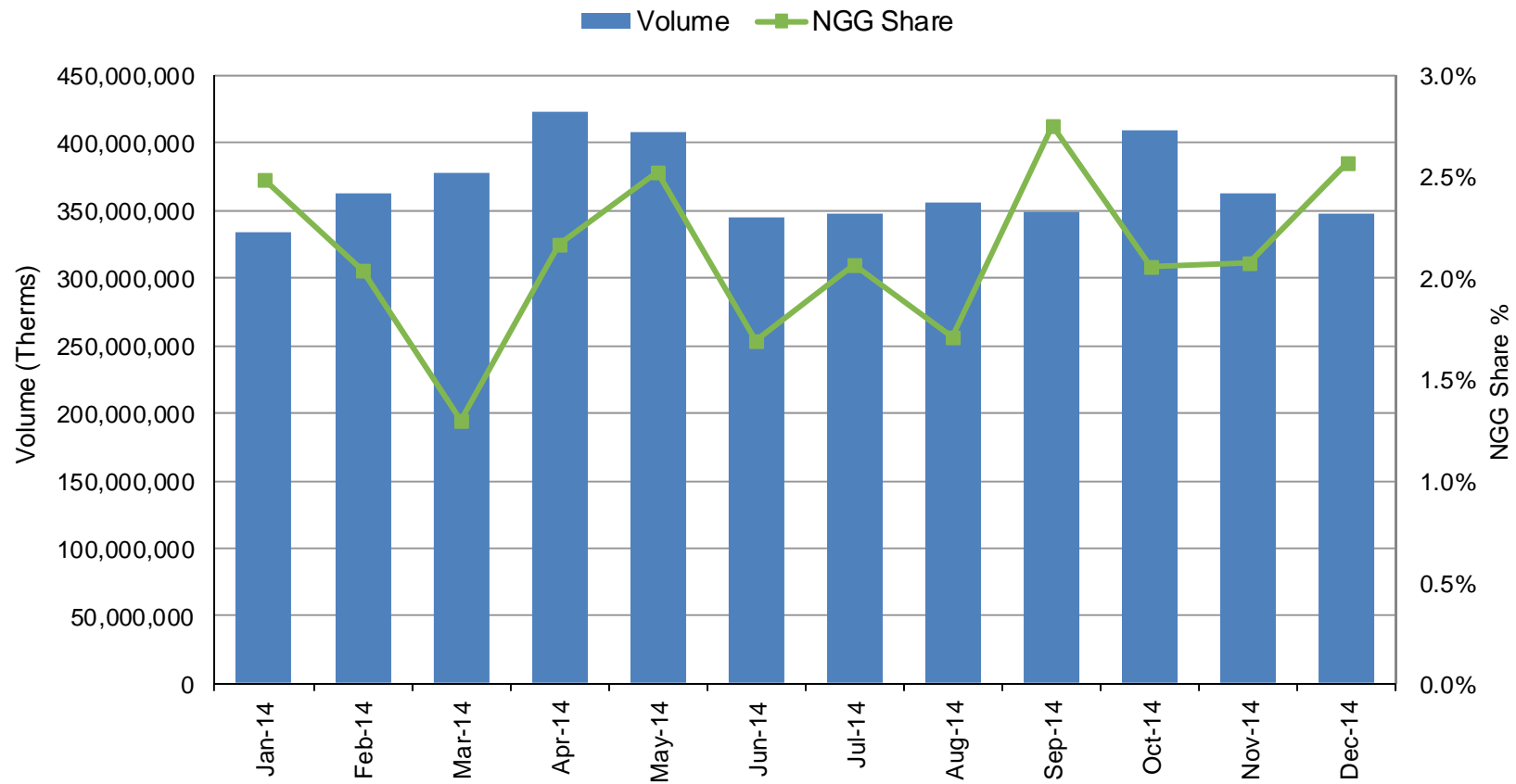
Shippers % share of volume: 97.8%
NGC % share of volume: 2.2%



Monthly Volumes and SAP development 2014

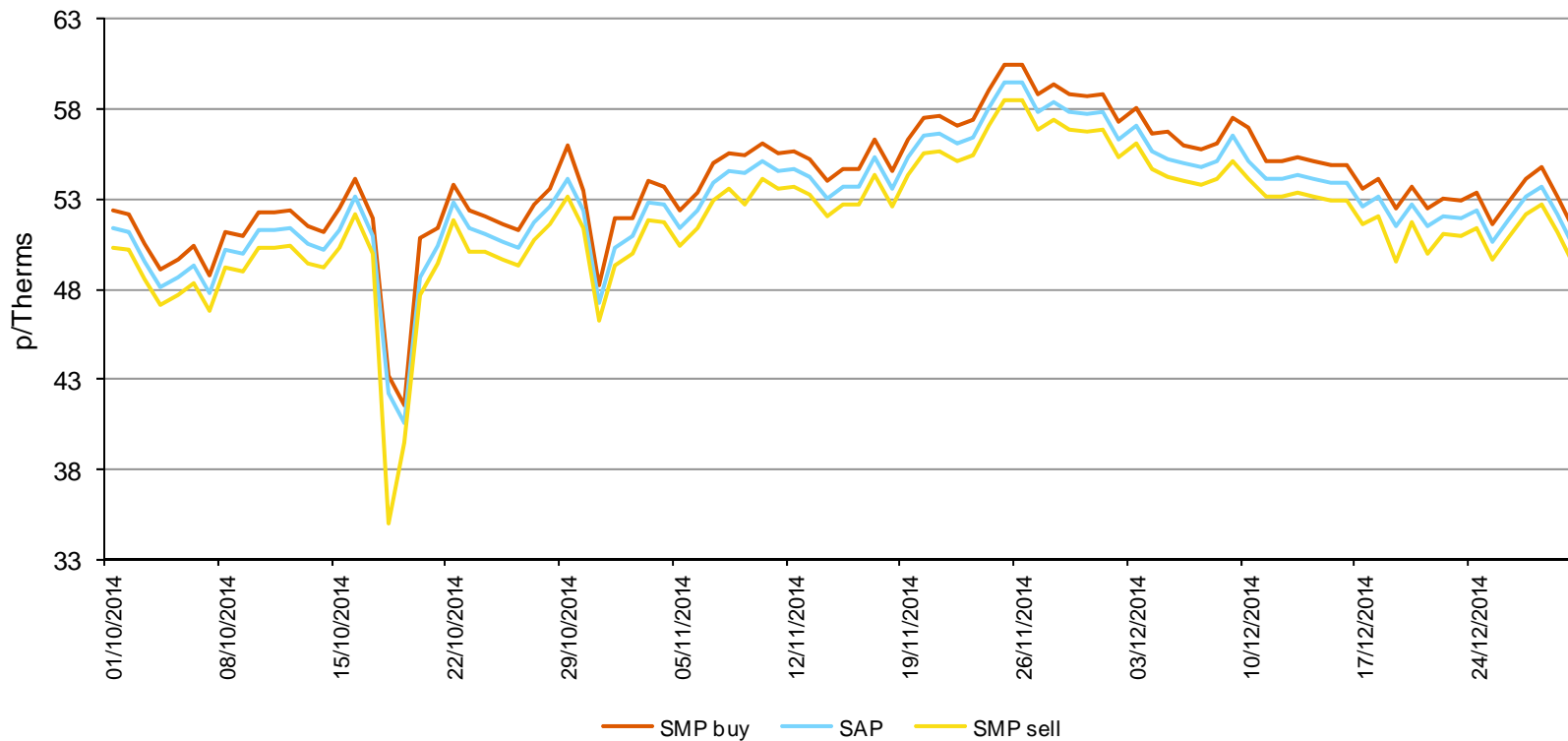


Monthly Volumes and NGG share 2014



Daily SAP/SMP prices – Q4 2014

Highest SMP buy:	60.44 p/th (25 Nov)	Lowest SMP buy:	41.51 p/th (19 Oct)
Highest SAP:	59.46 p/th (25 Nov)	Lowest SAP:	40.53 p/th (19 Oct)
Highest SMP sell:	58.47 p/th (25 Nov)	Lowest SMP sell:	35.00 p/th (18 Oct)



Points of interest

OCM Test Environment

- › OCM API Test environment available this week.
- › Go to <https://www.theice.com/launch>
- › Pre arranged 2 User ID's and passwords.

Production Environment access

- › WebICE market access documents have been sent Go Live.
- › Please submit forms before March 16th to guarantee market access for go live on April 1st .

WebICE Trader Training

- › WebICE trader training invitations will be sent shortly.
- › Trainings will be Webinar based starting on Tuesday the 17th Feb.
- › There will be six sessions to choose from with the last one being on March 31st.



Thank you

DISCLAIMER

The information contained in this document ("Presentation") has been prepared by ICE Endex and is subject to change without notice. Copyright and intellectual property right protection exists in this Presentation and it may not be reproduced, distributed or published with any third party, in whole or in part, without the express prior written permission from ICE Endex. All rights are reserved. While reasonable care has been taken to ensure that the information contained herein is true and accurate, ICE Endex makes no representation to its correctness, reliability or completeness including likelihood of achievement or reasonableness of any forecasts, prospects, returns or statements in relation to future matters that may be contained in this Presentation. Neither ICE Endex nor any of its directors or employees accepts any liability in respect of the information contained in the Presentation or for any loss arising from the use of this Presentation, its contents or otherwise arising in connection with it. This Presentation does not constitute an offer, invitation or recommendation to any transaction and neither is it to be taken as any form of commitment on the part of ICE Endex to proceed with any transaction.