

System Management Principles Statement



- **Compliance report for December 2014**
- **Summary of balancing actions and breaches for December 2014**
- **Performance compared to last year**

Summary Report

	Dec-14
Total Number of Buy Actions	19
Total Number of Sell Actions	6
Total	25

	Dec-14
Number of Material Breaches	0
Number of Non-Material Breaches	0

	Dec-14	Dec-13
Number of Balancing Actions (Calendar year to date)	290	385
Number of Material Breaches (Calendar year to date)	0	0
Number of Non-Material Breaches (Calendar year to date)	0	0

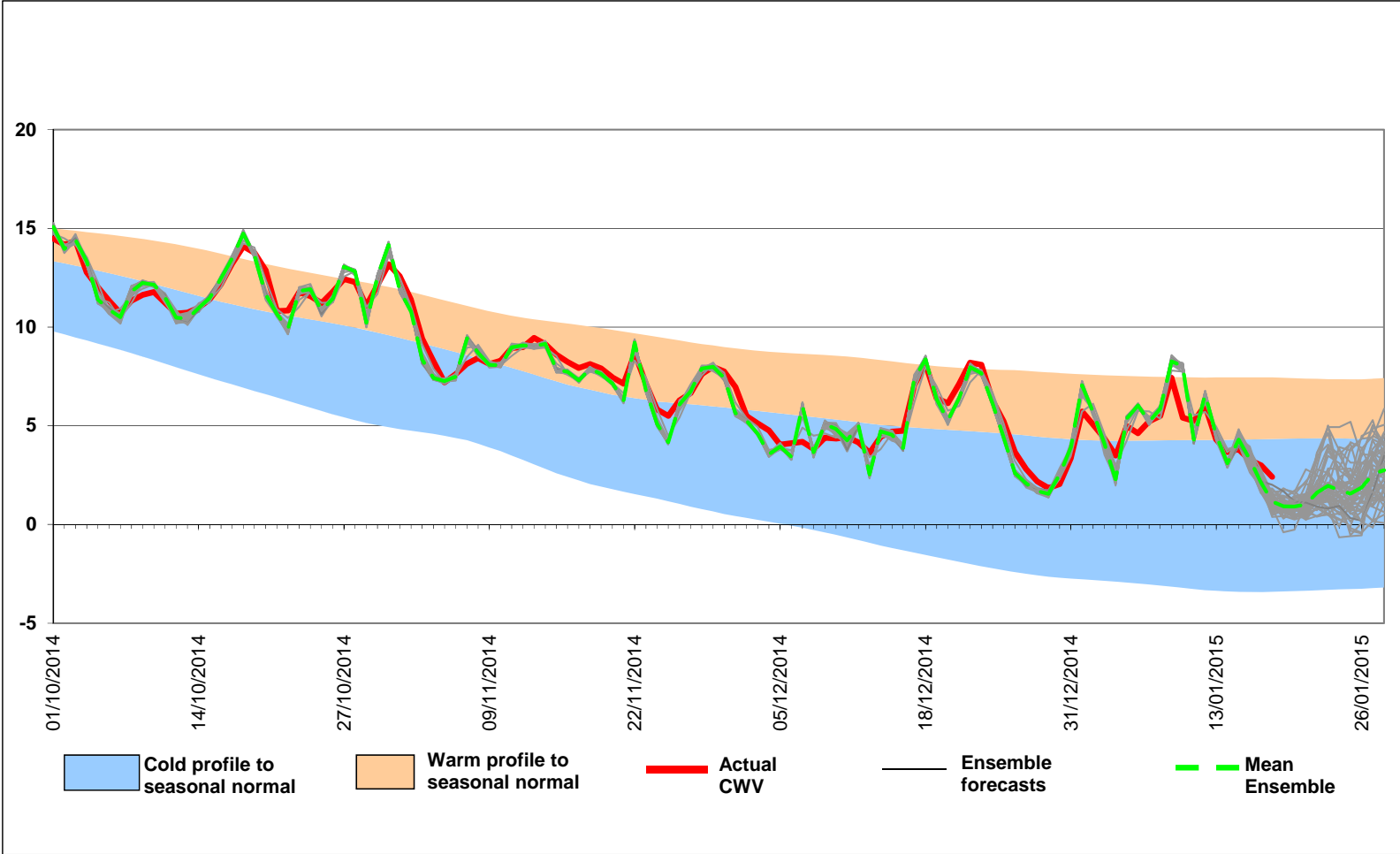
Operational Overview



15 Day Ahead ensemble CWV

October 2014 to January 2015 vs Historical Range

- NGG are anticipating temperature below seasonal normal.
- The highest individual demand, of 370 MCM/d, occurs on 26th January 2015.
- The highest mean ensemble demand, of 347 MCM/d, occurs on 19th & 20th January 2015.

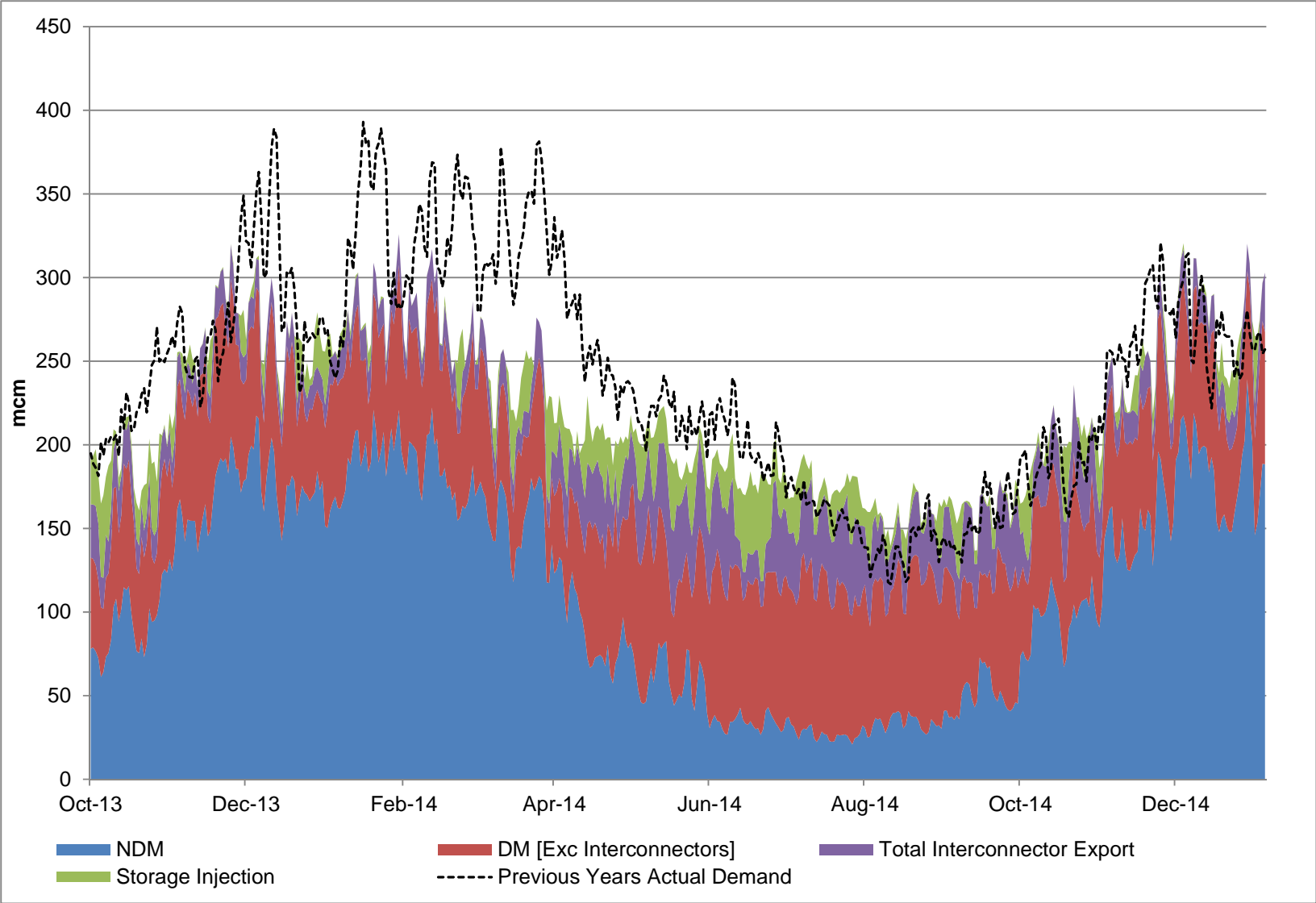


Demands



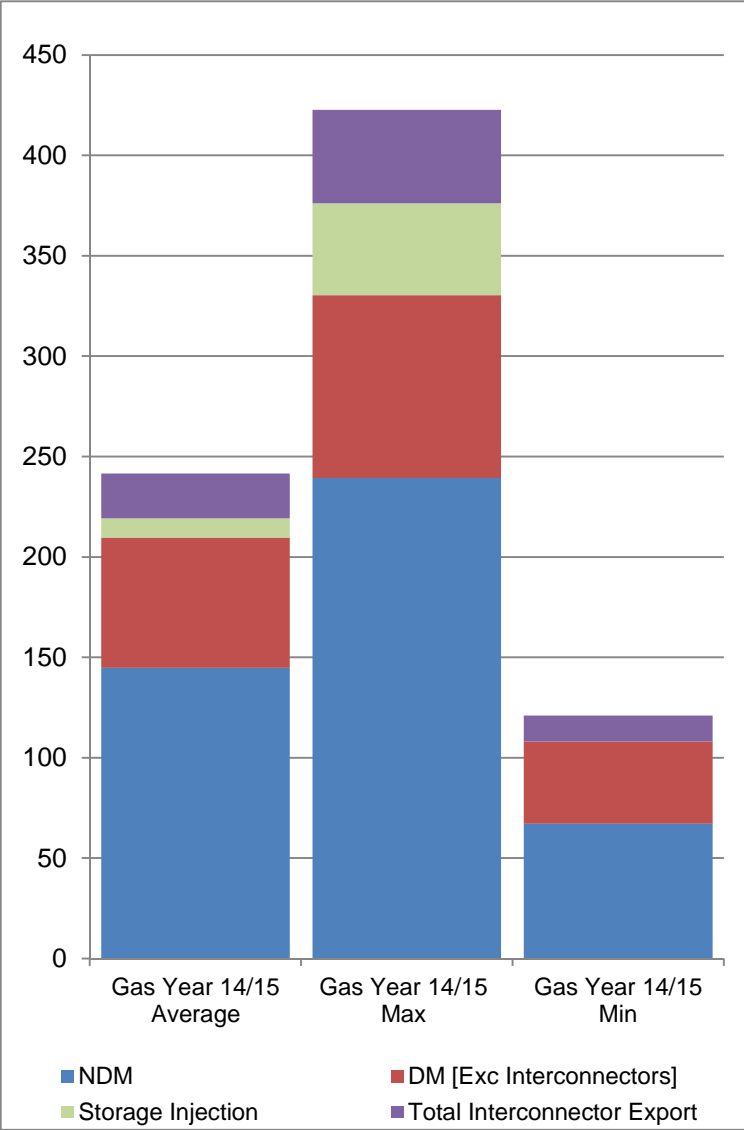
Gas Demand Breakdown

1st October 2013 to 5th January 2015 Vs Previous Year



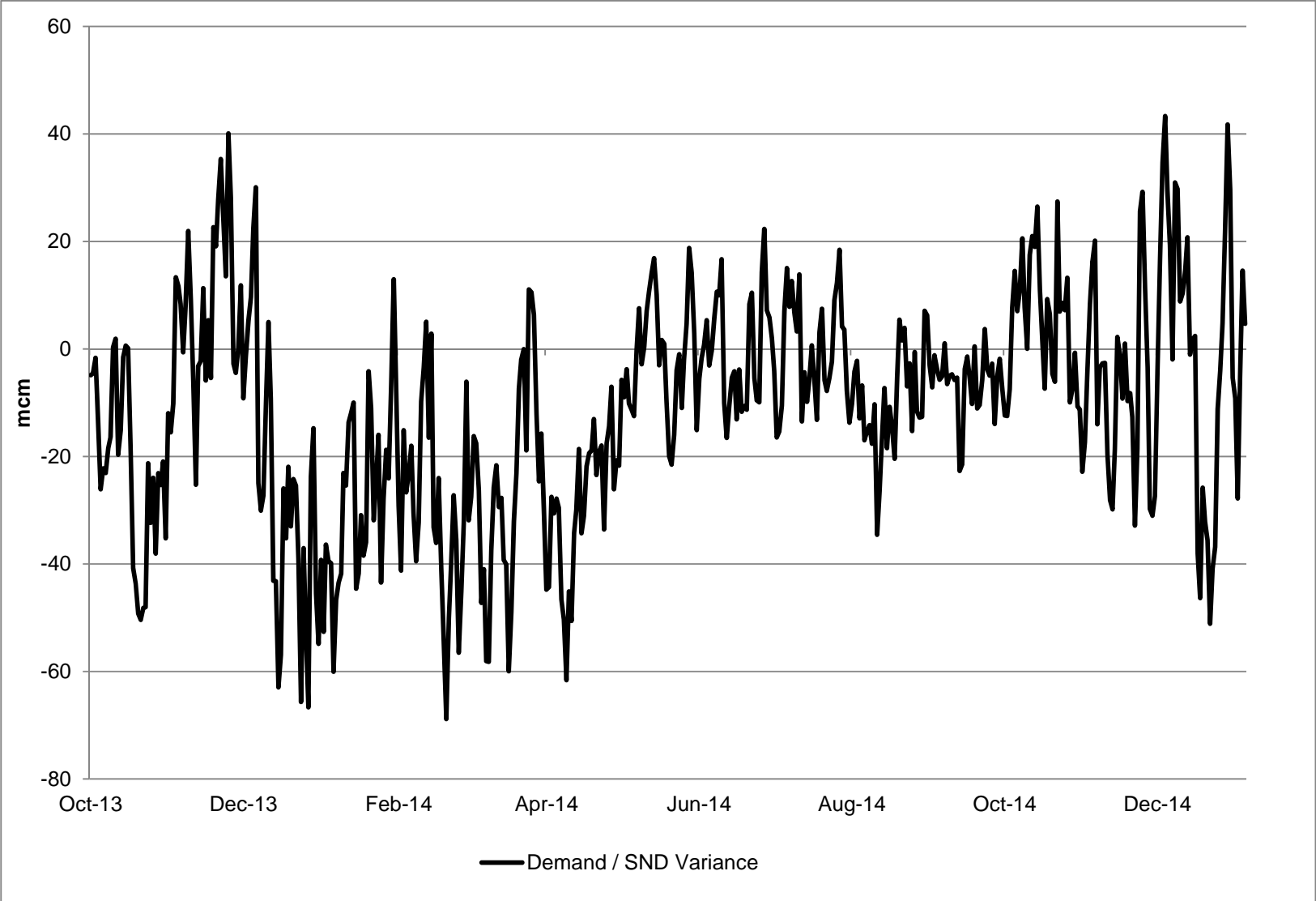
Gas Demand Statistics

1st October 2014 to 5th January 2015



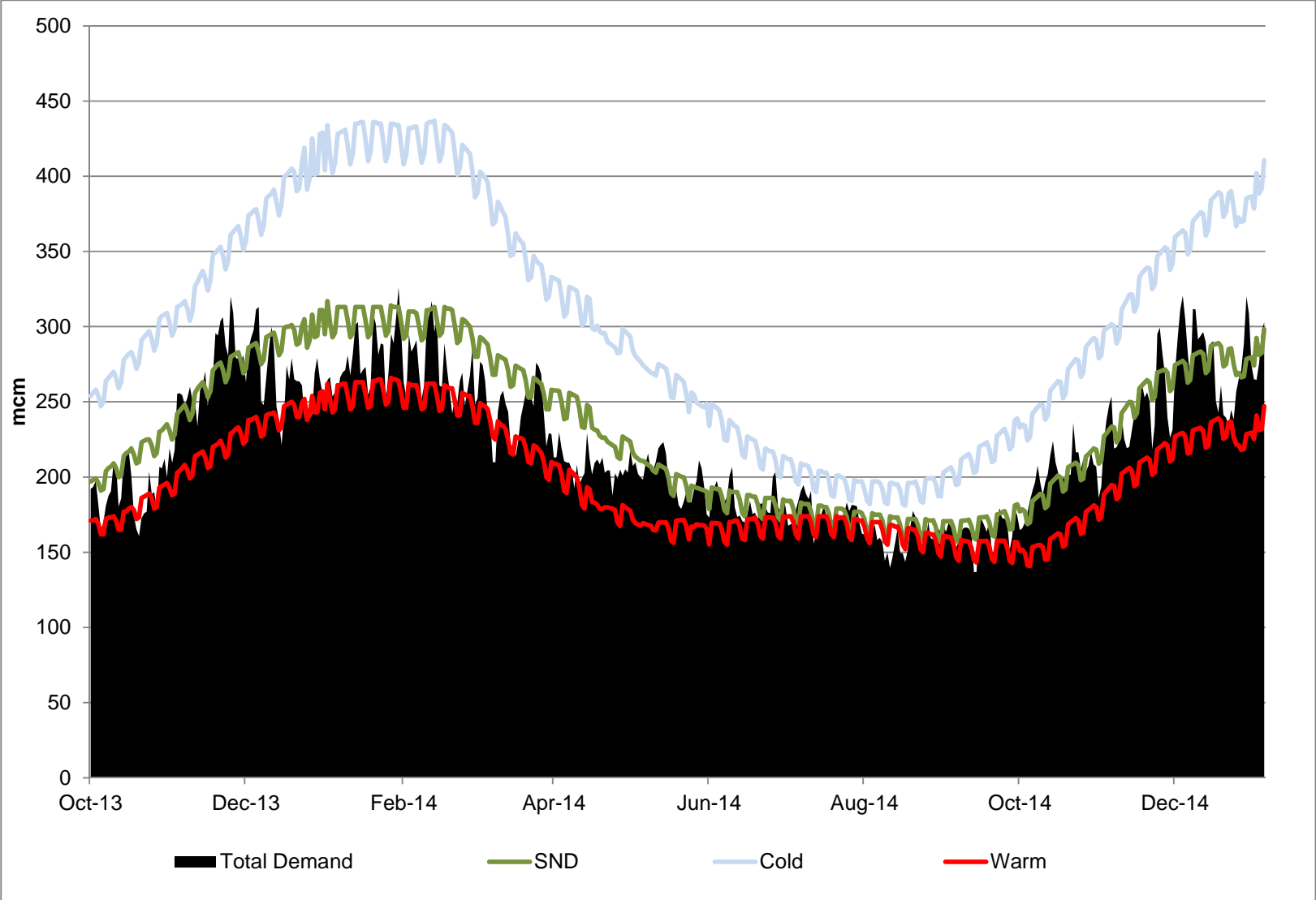
Demand Variance from SND

1st October 2013 to 5th January 2015



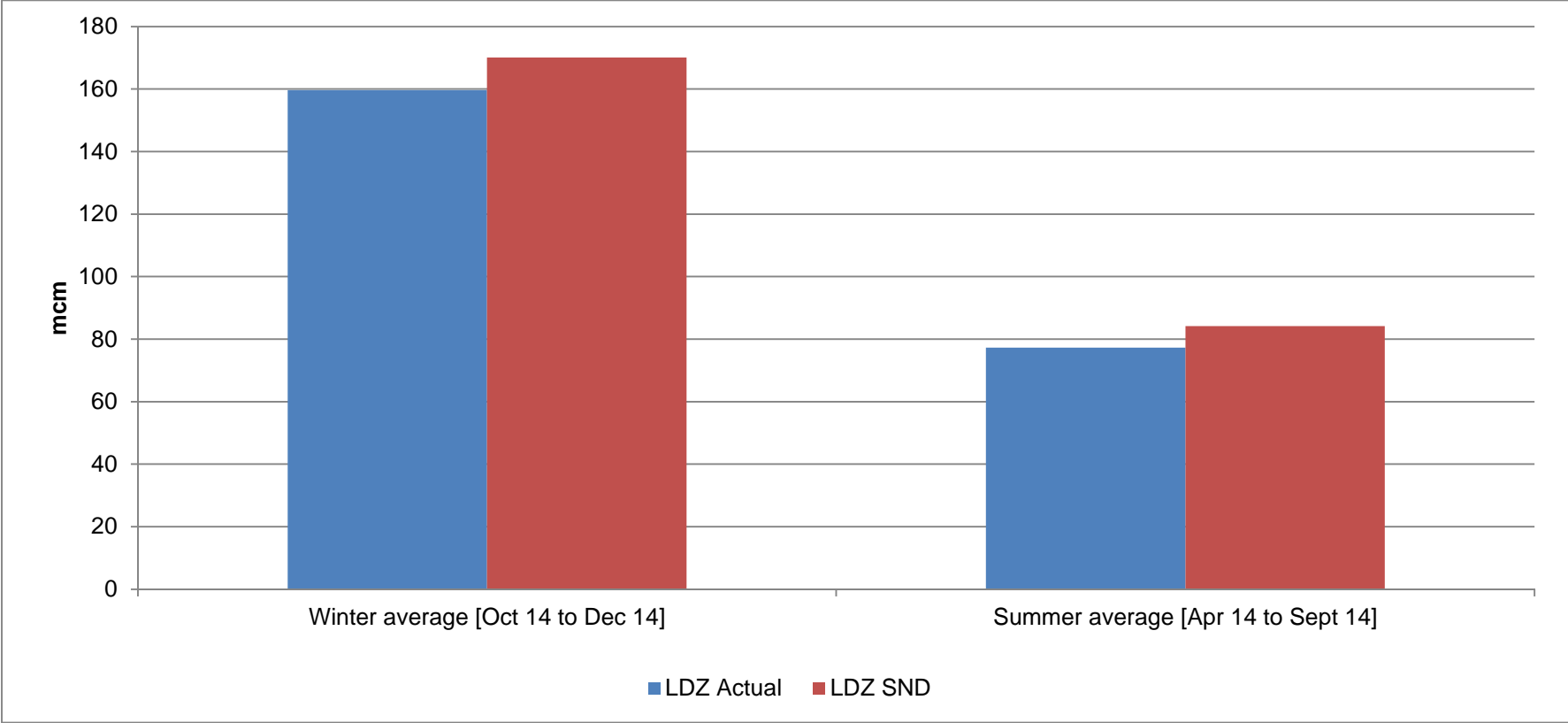
Gas Demand Vs SND / Cold / Warm

1st October 2013 to 5th January 2015



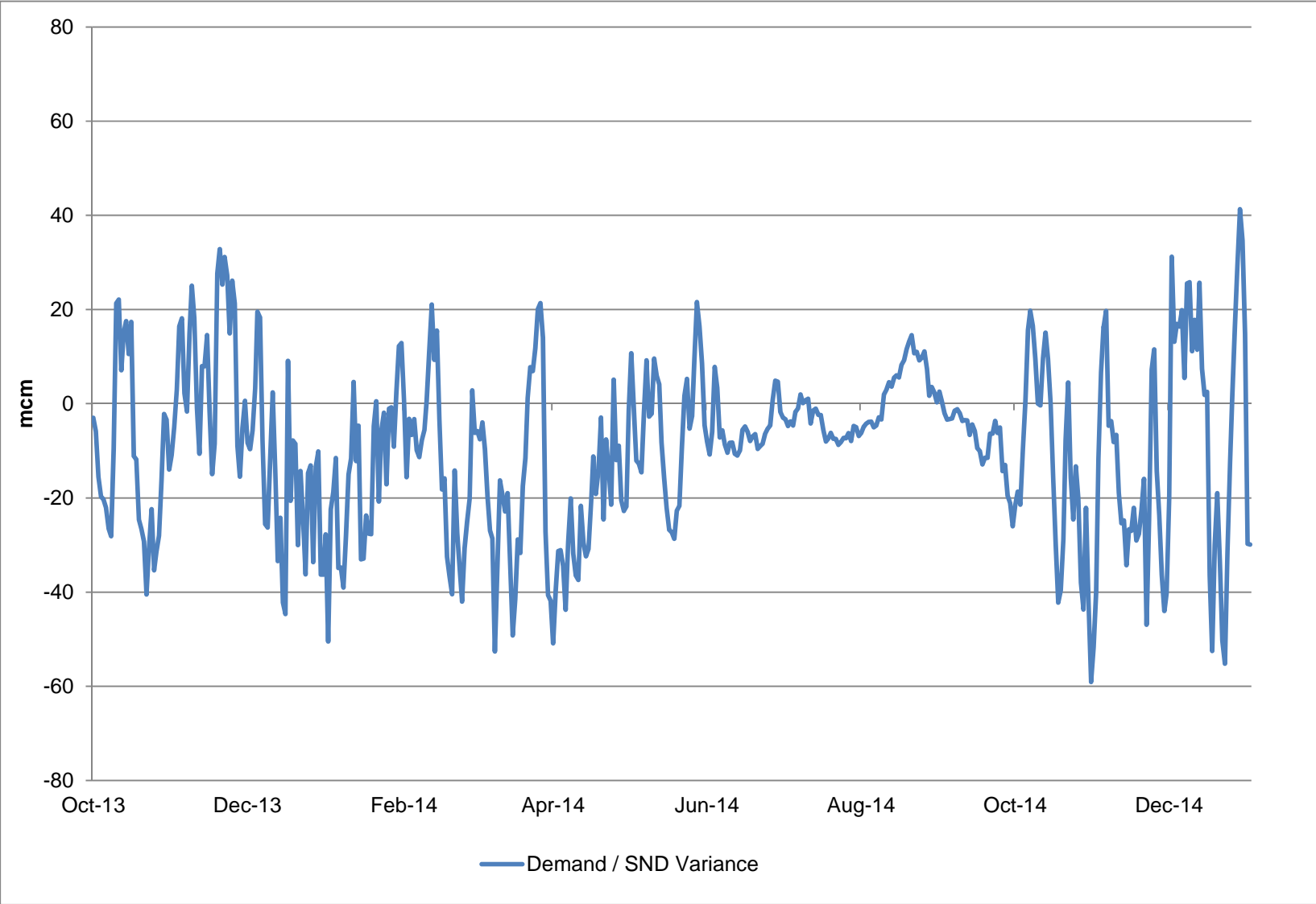
LDZ Actual Demand Vs LDZ SND

1st October 2014 to 31st December 2014



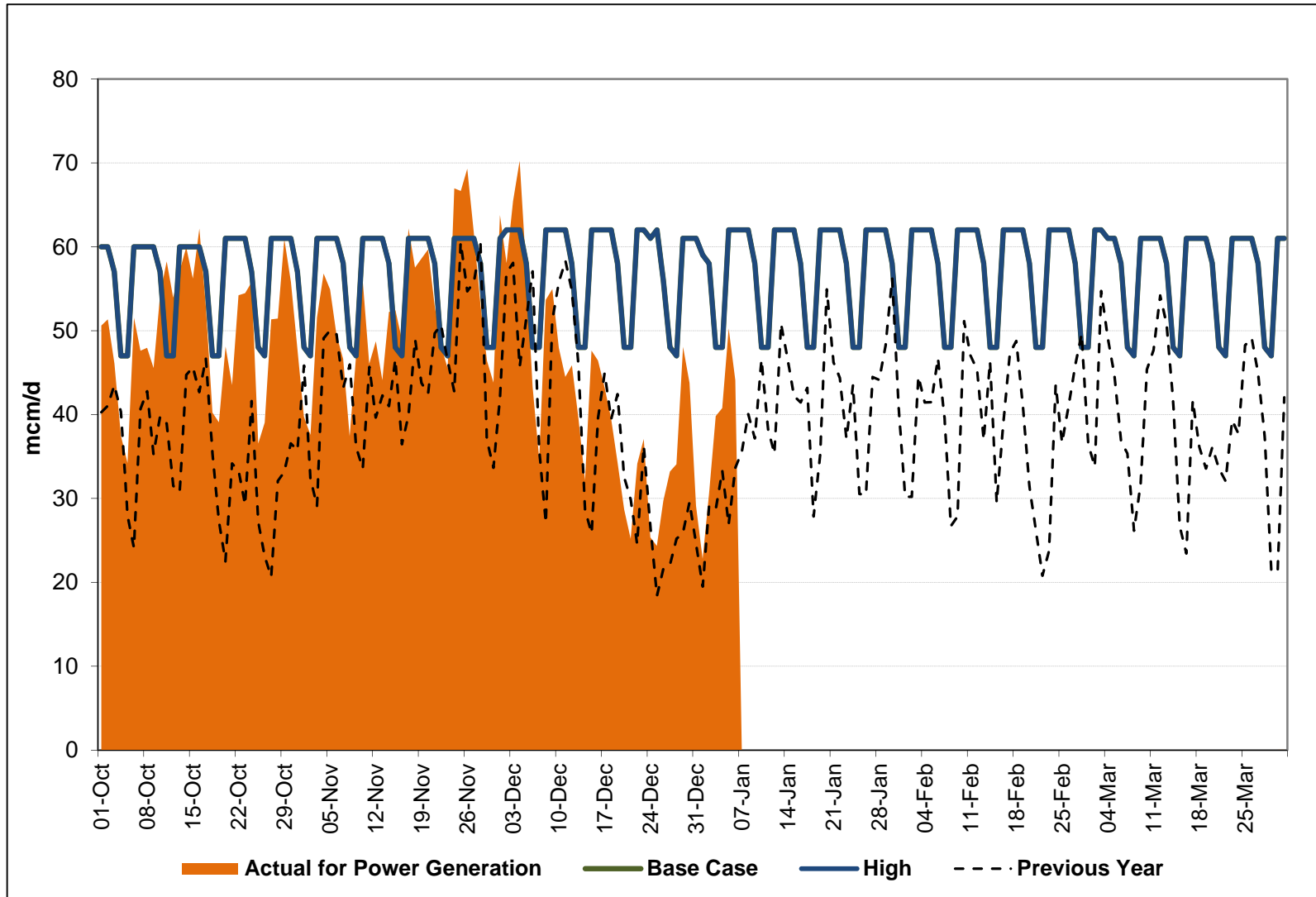
LDZ Demand / LDZ SND Variance

1st October 2013 to 2nd January 2015



Gas Consumption for Power Generation

1st October 2014 to 6th January 2015

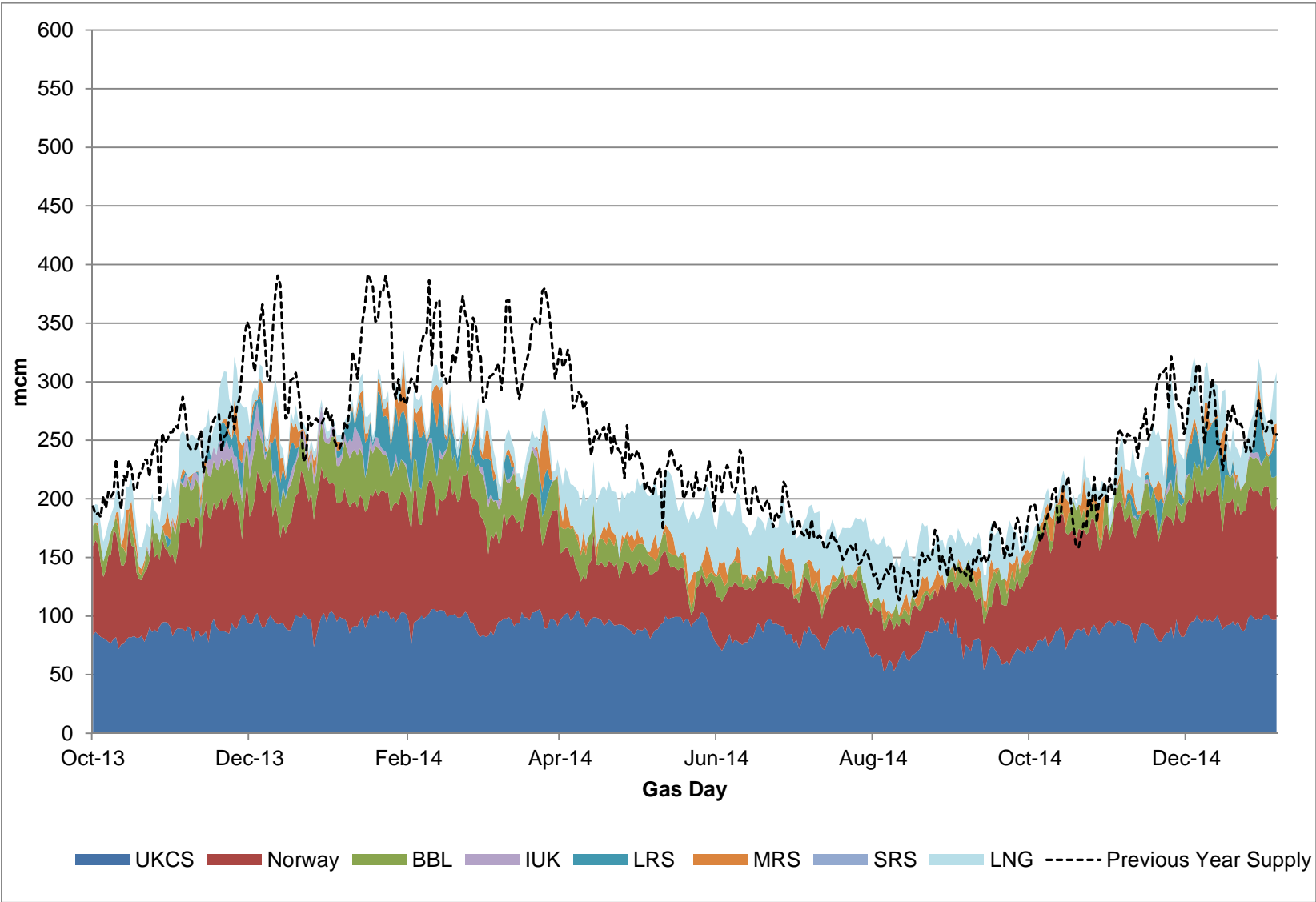


Supplies



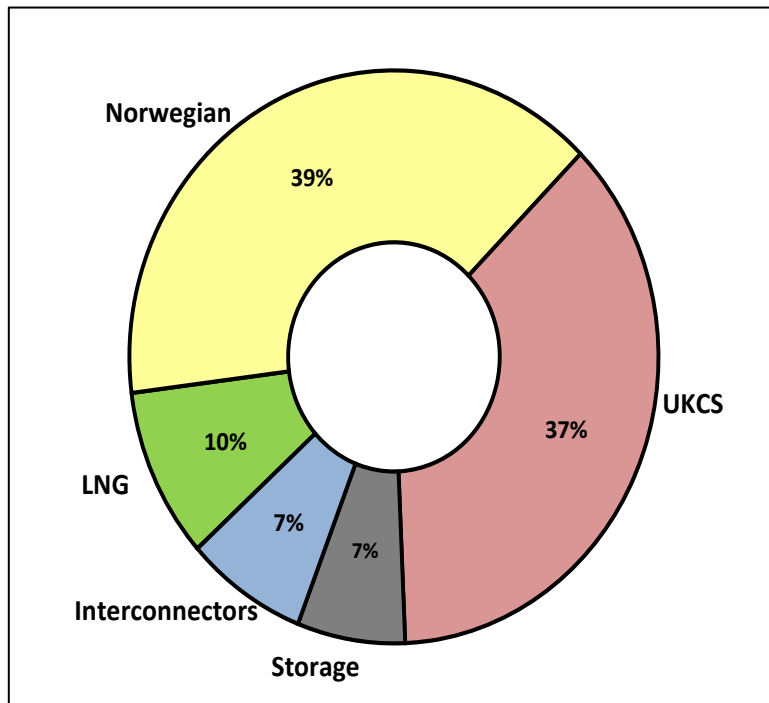
Gas Supply Breakdown

1st October 2013 to 5th January 2015 vs Previous Year

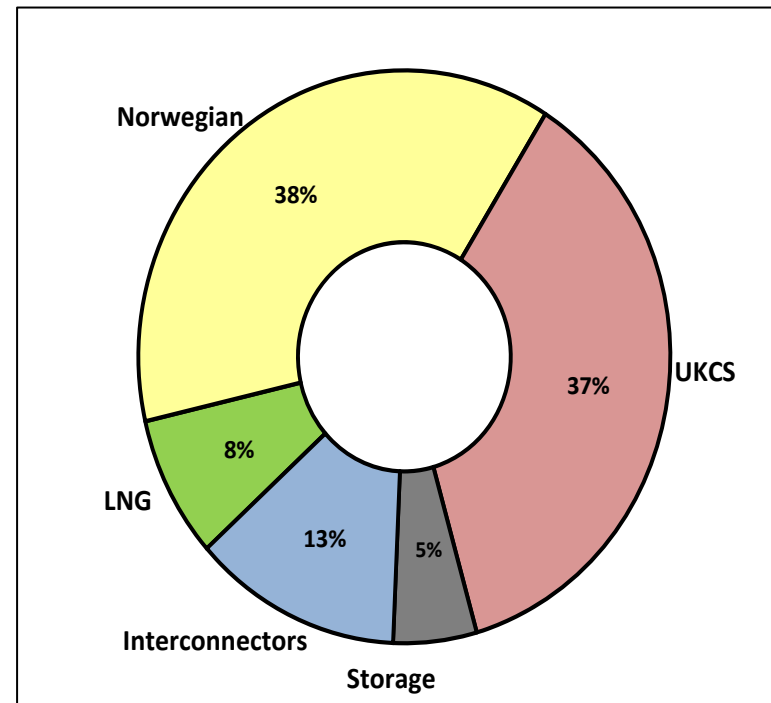


Gas Supply Breakdown

1st Oct 2014 to 31st Dec 2014

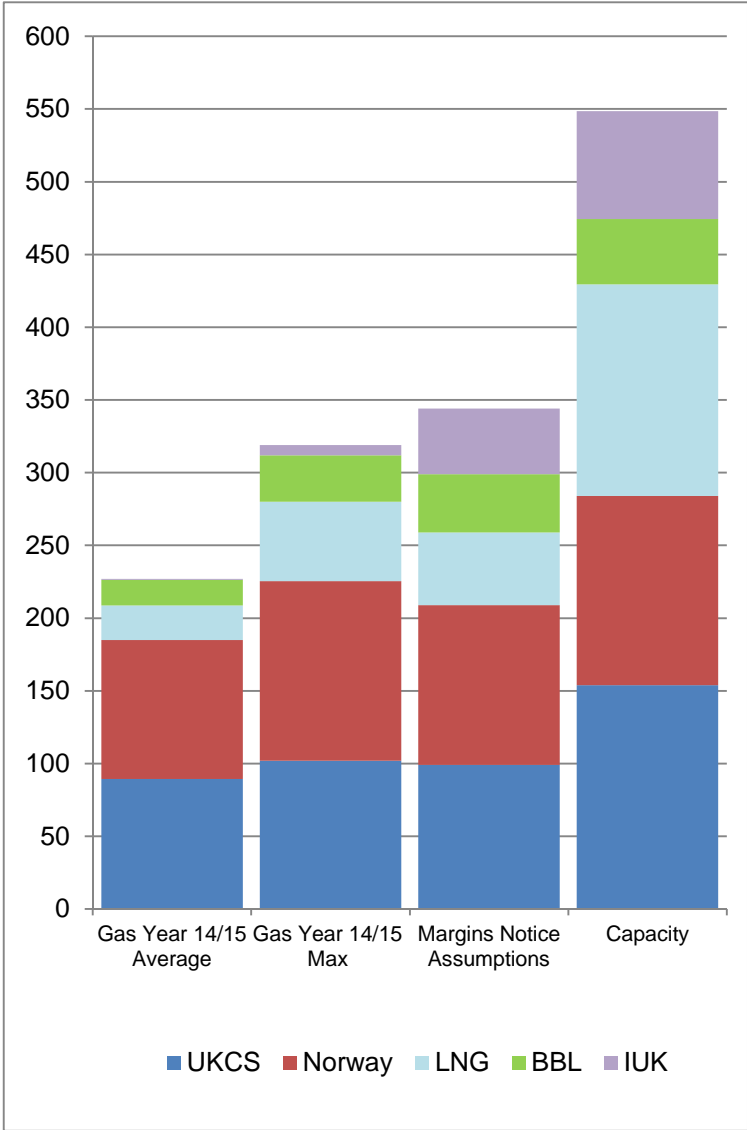


1st Oct 2013 to 31st Dec 2013



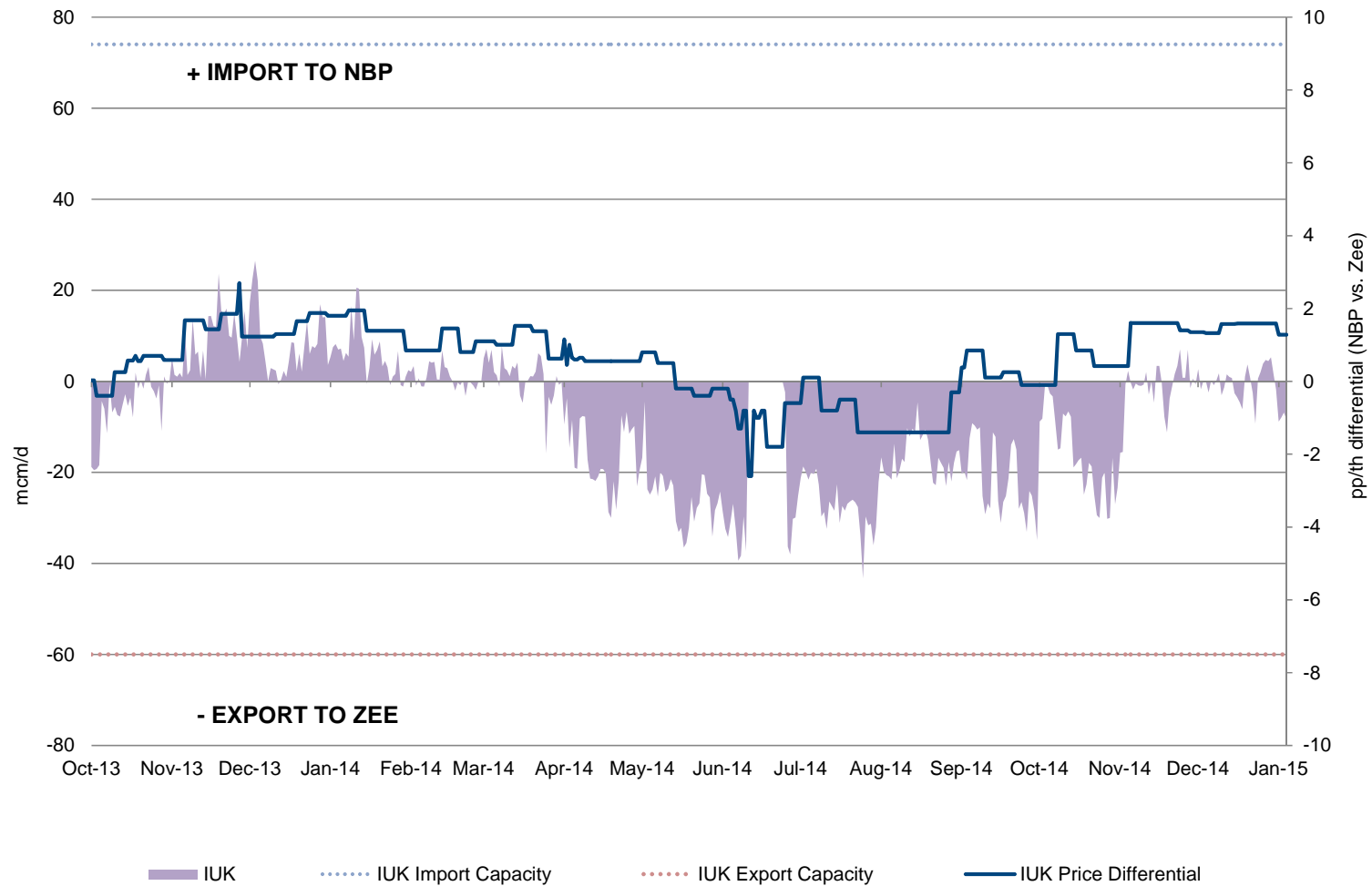
NSS [Non-Storage Supply]

1st October 2014 to 5th January 2015



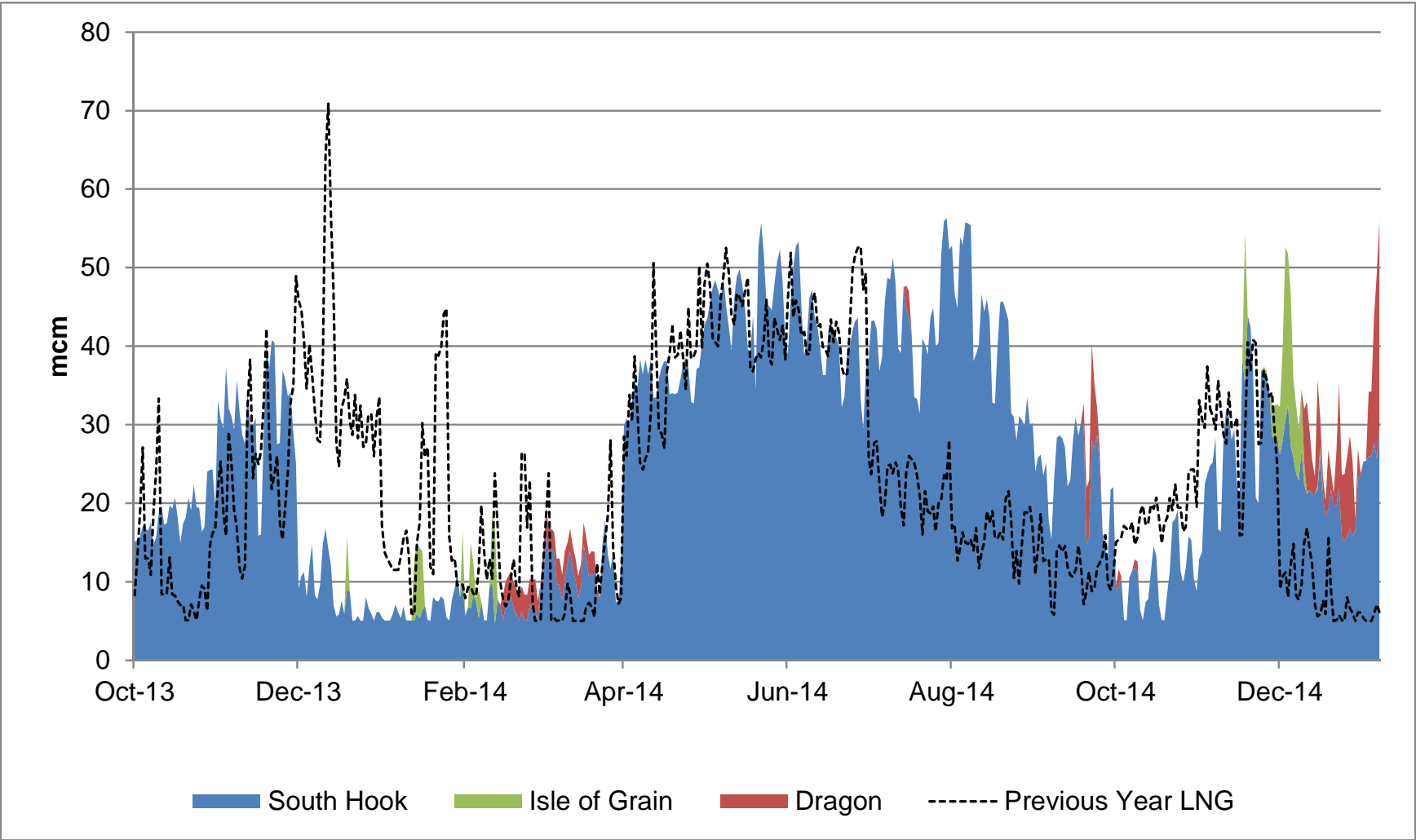
IUK Flows Vs NBP & ZEE Price Differential

1st October 2013 to 4th January 2015



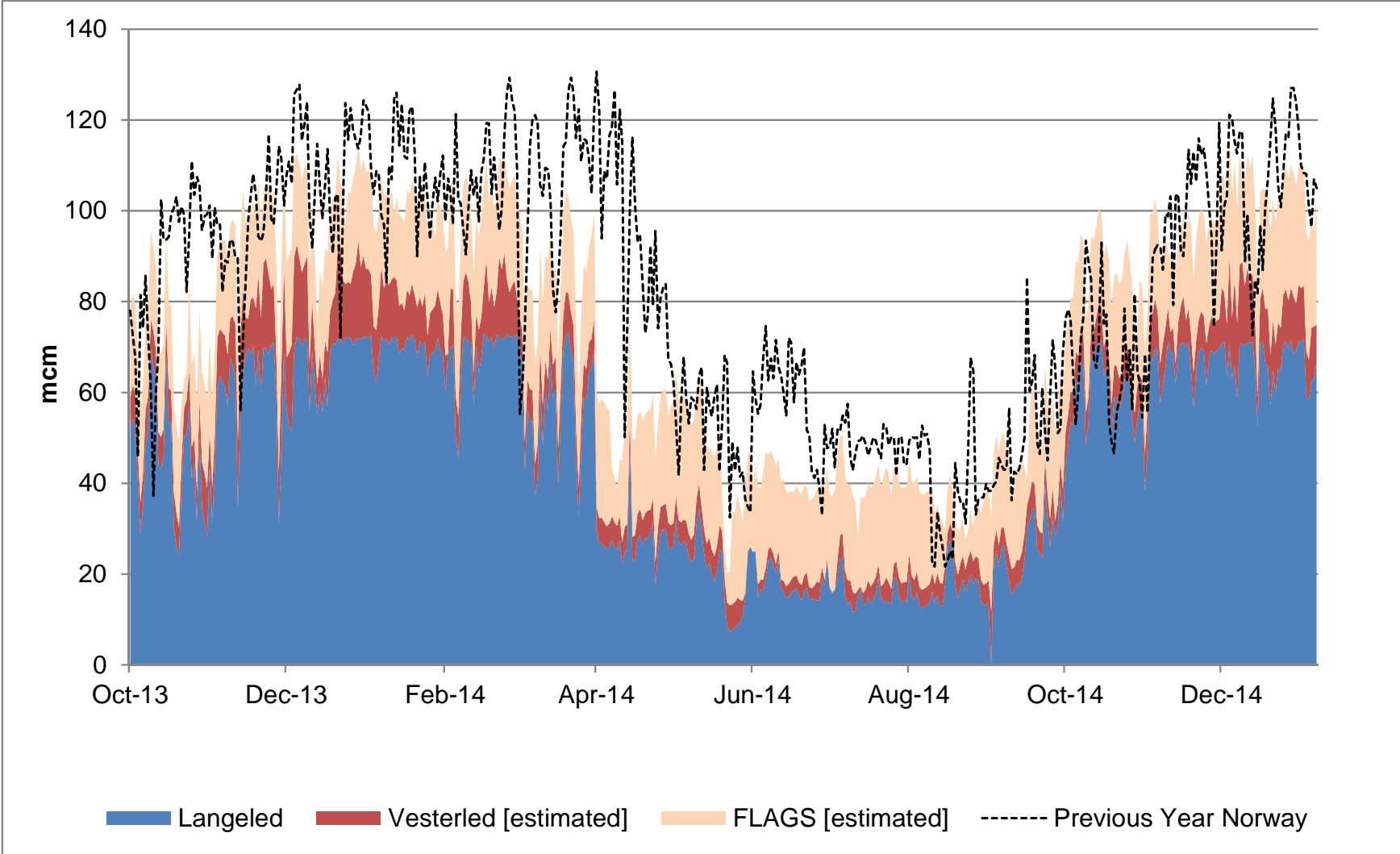
LNG Terminal Flows

1st October 2013 to 7th January 2015



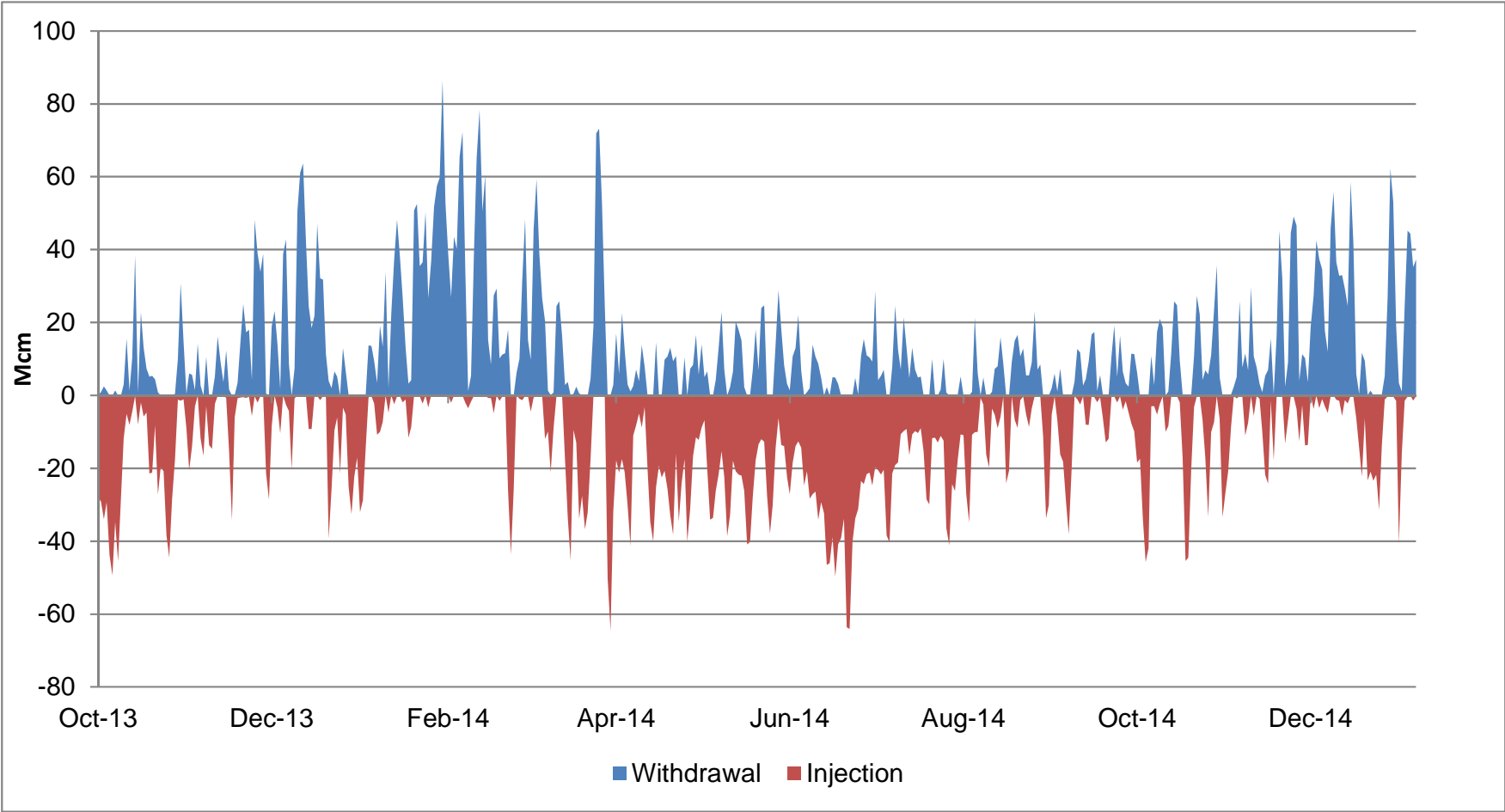
Norway Flows

1st October 2013 to 7th January 2015



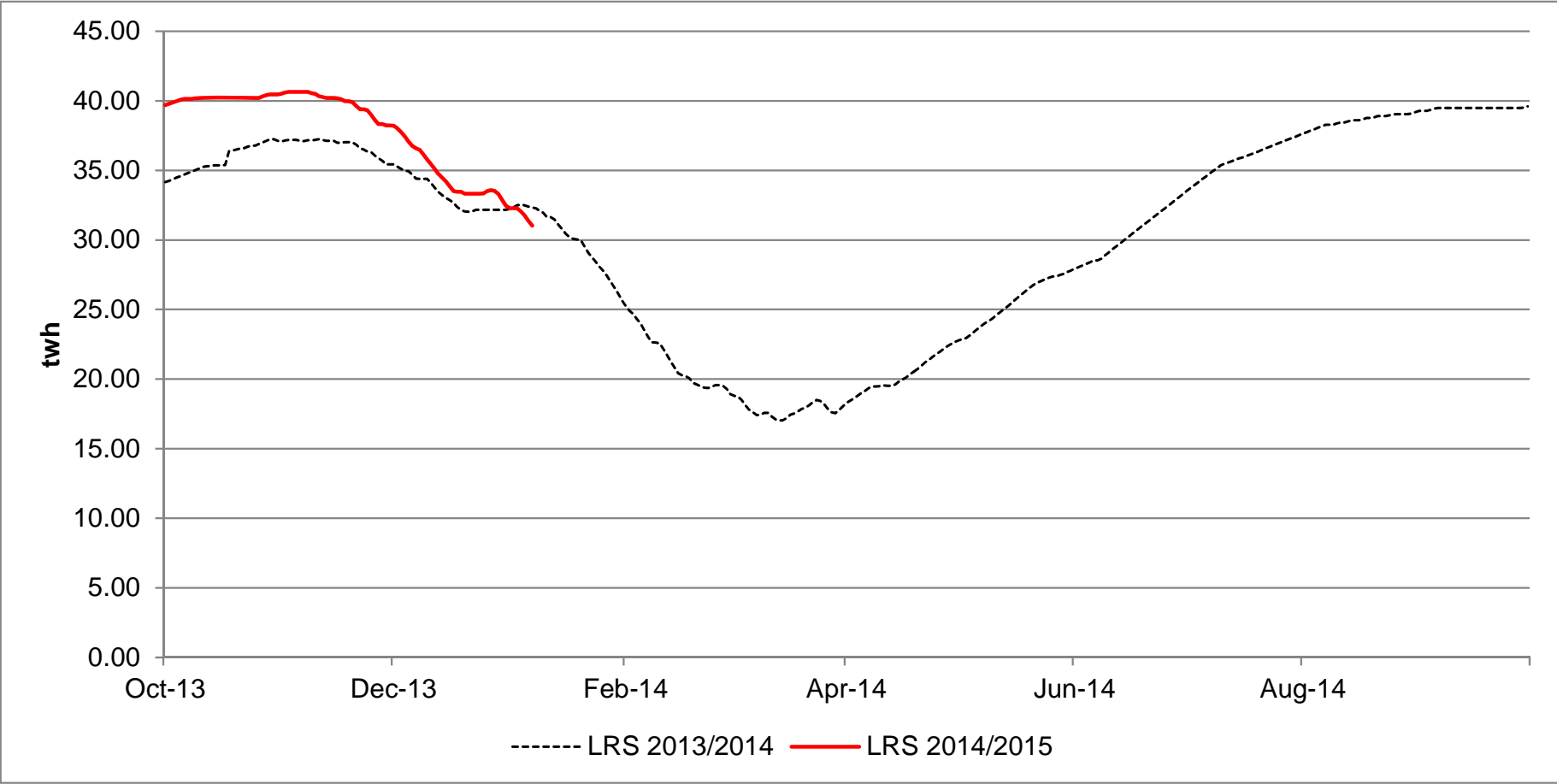
Storage Withdrawal Vs Injection

1st October 2013 to 7th January 2015



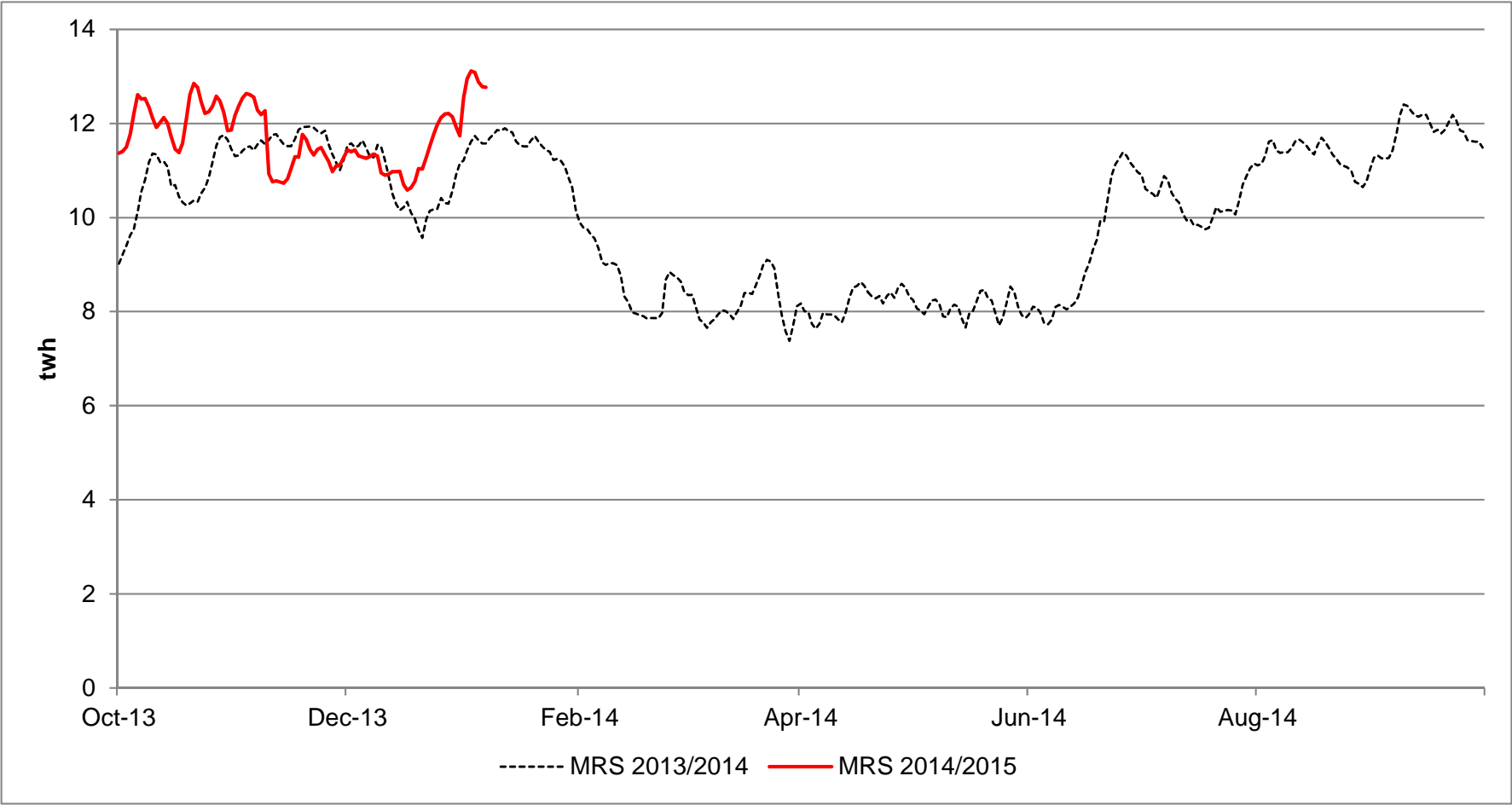
Long Range Storage Stocks [LRS]

1st Oct 2014 to 7th January 2015 Vs Previous Years



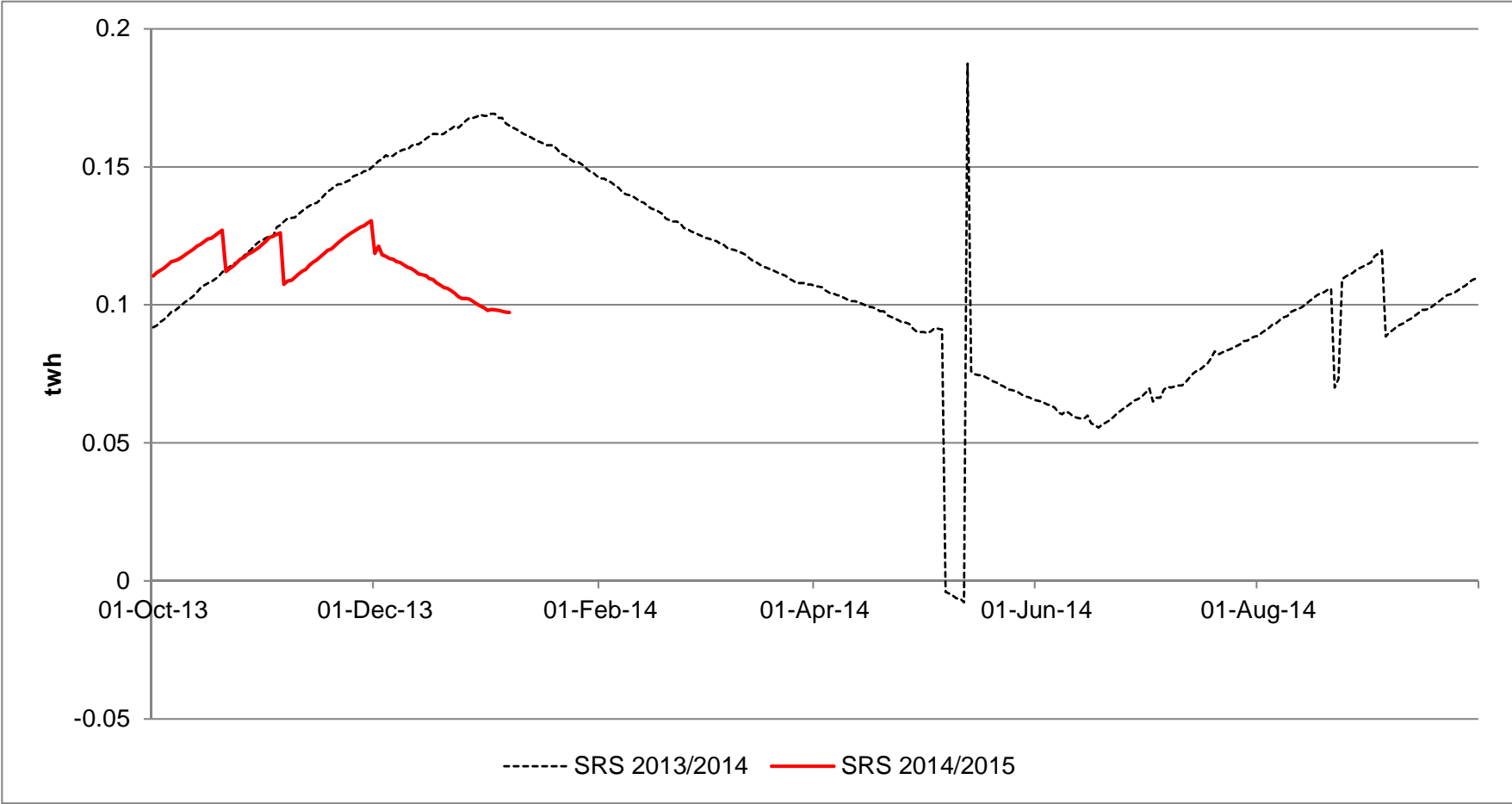
Medium Range Storage Stocks [MRS]

1st Oct 2014 to 7th January 2015 Vs Previous Years



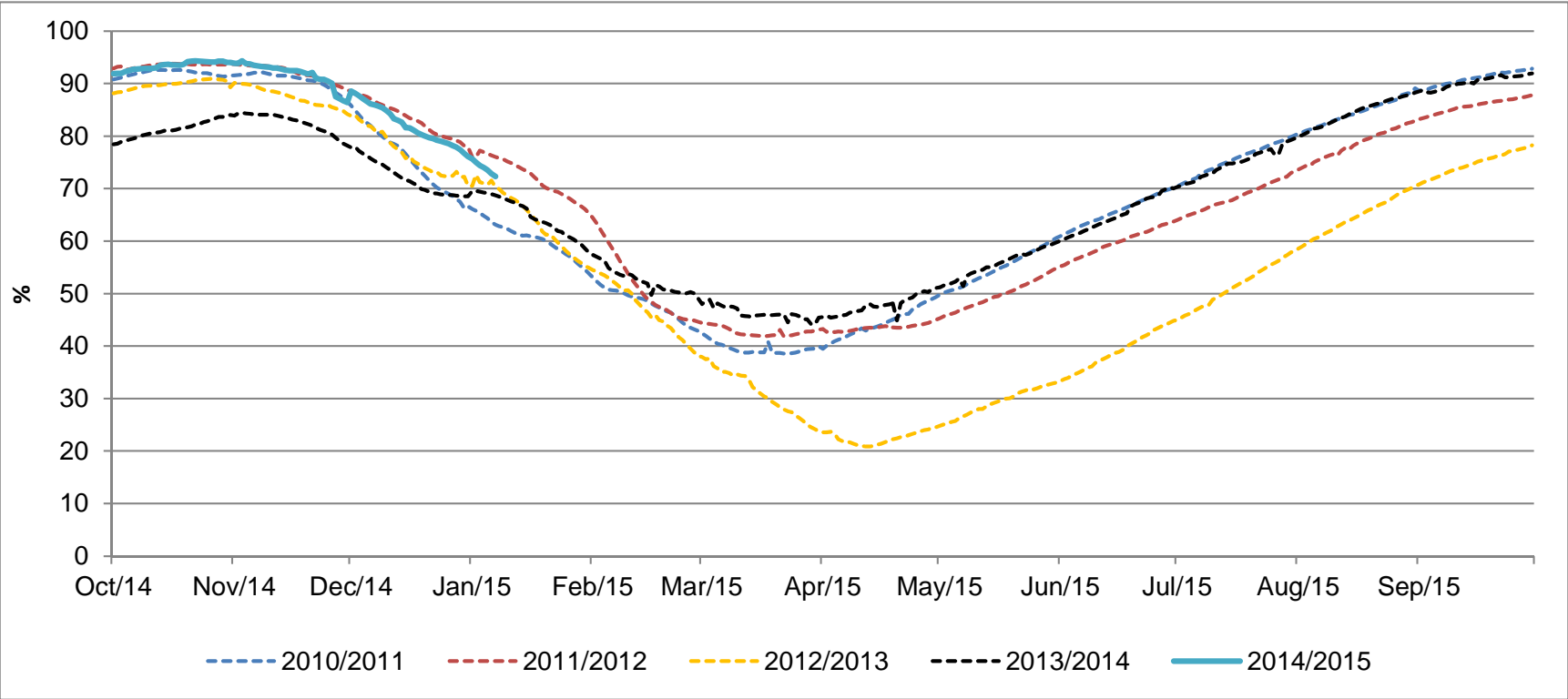
Short Range Storage Stocks [SRS]

1st Oct 2014 to 7th Jan 2015 Vs Previous Years



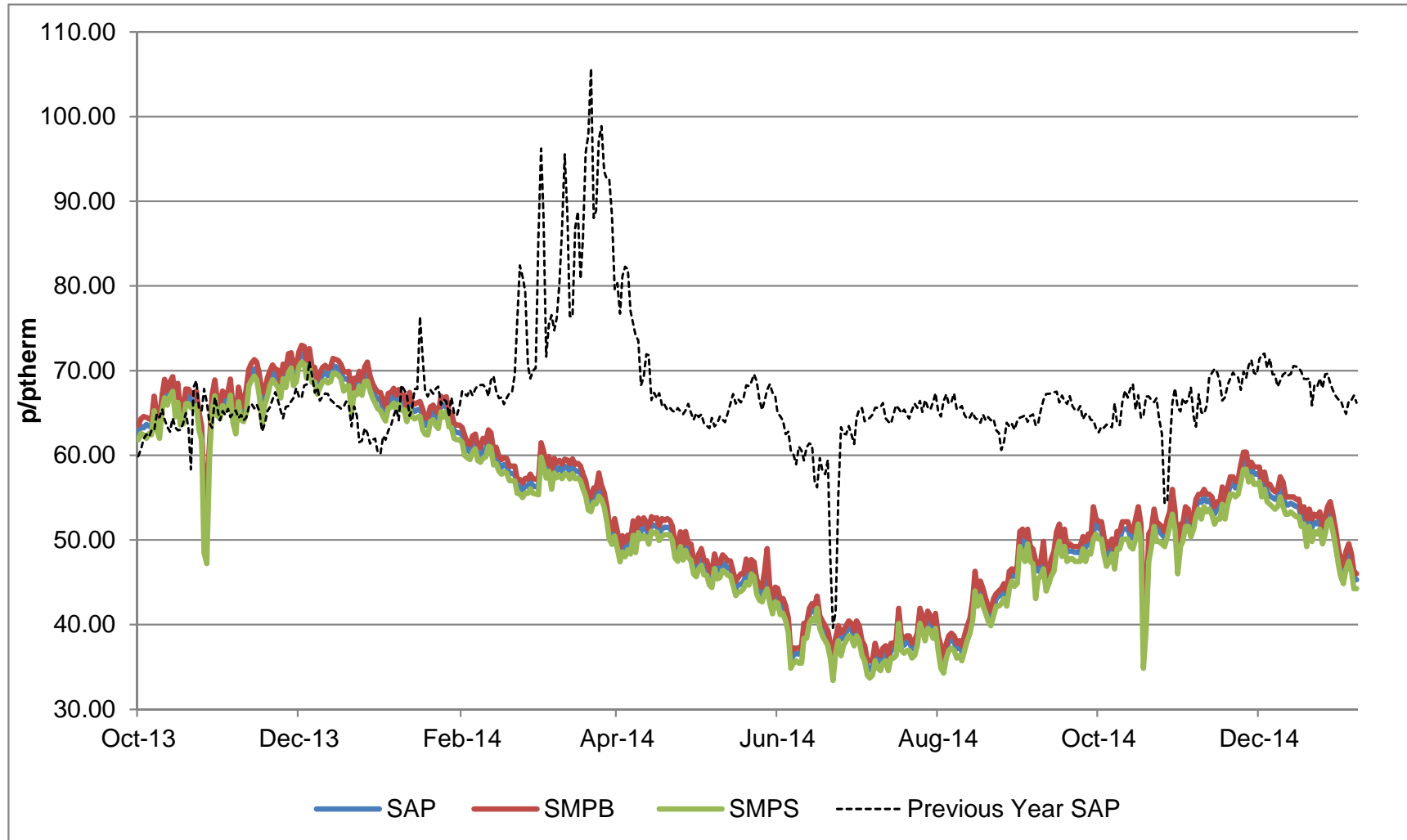
Combined EU Storage Stocks [% Full]

From 1st Oct 2014 to 7th Jan 2015 Vs Previous Years

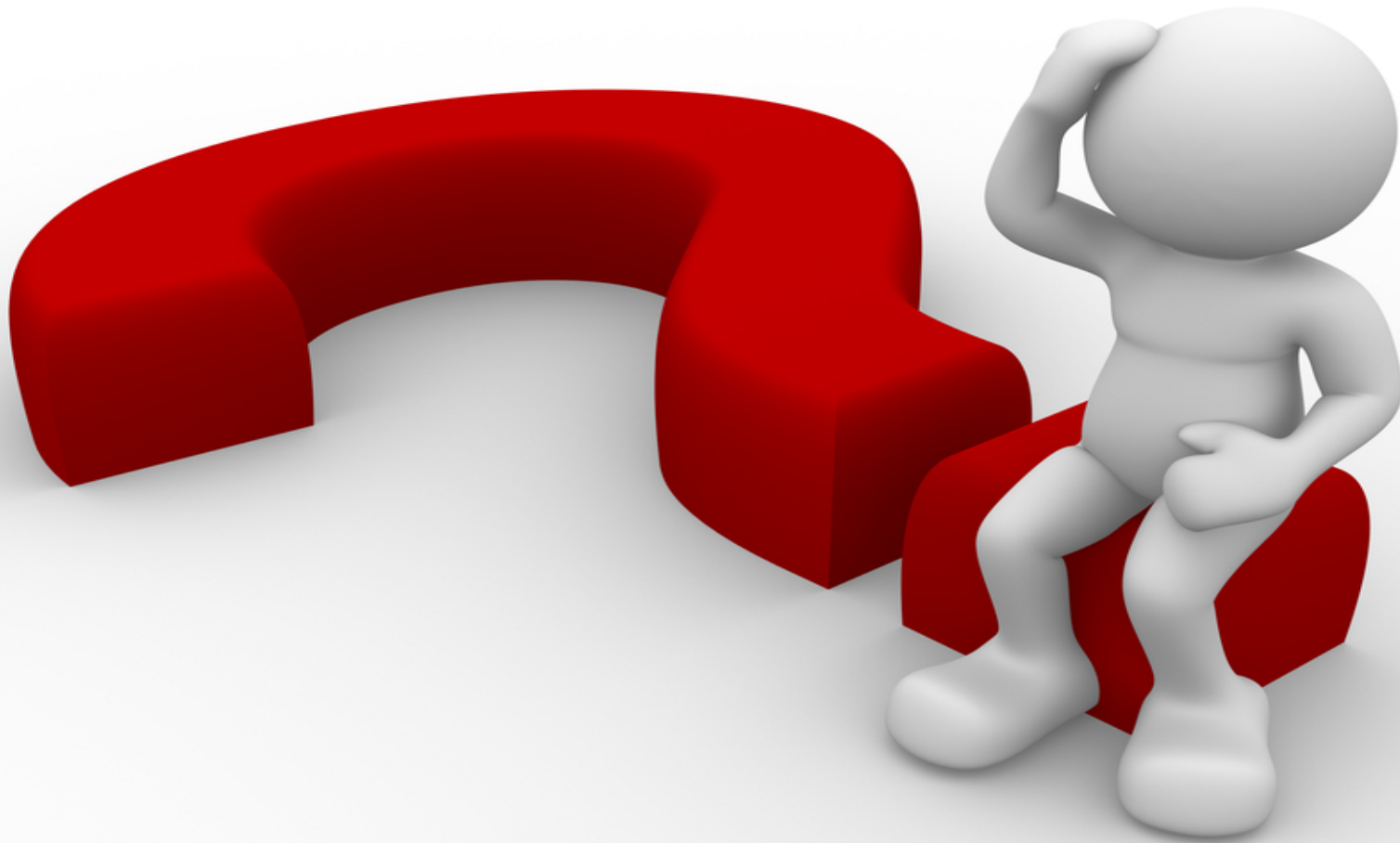


UK Gas Prices

1st Oct 2013 to 7th Jan 2015 Vs Previous Years



What Operational Issues Affected Users?



Transporter Actions and Neutrality

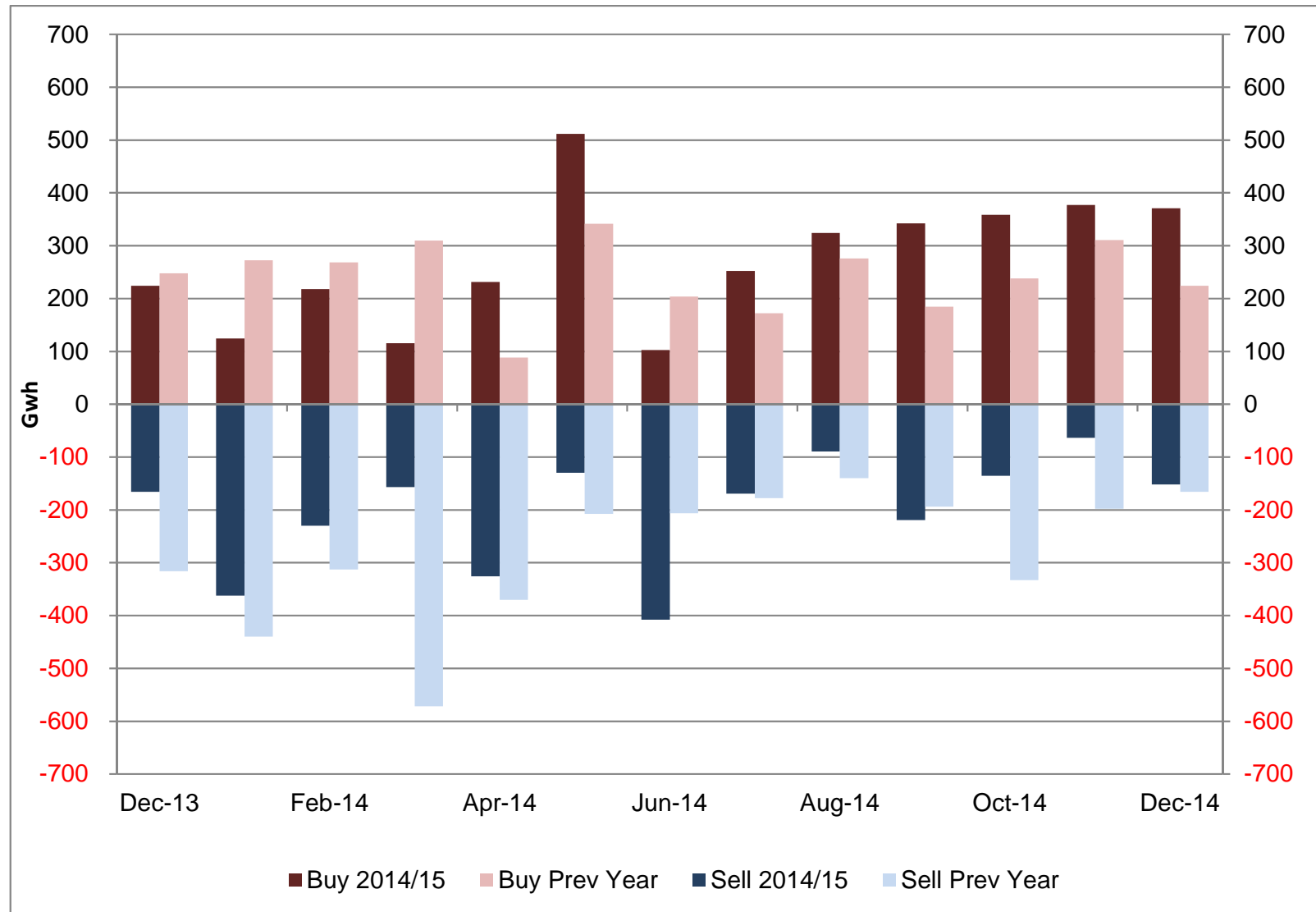


- Energy Balancing
- Capacity

Transporter Energy Traded on the OCM nationalgrid

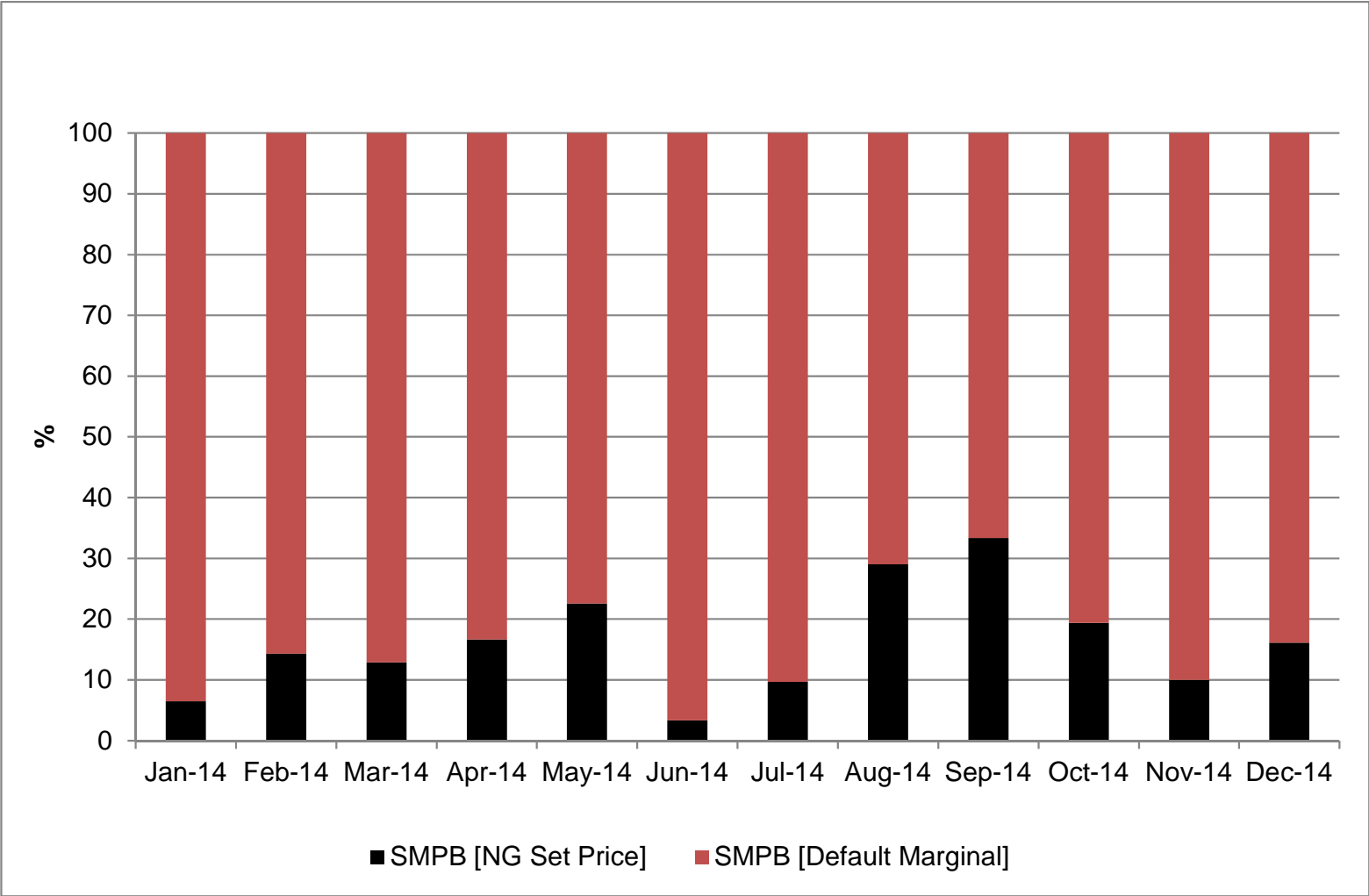
NGG Monthly Buys and Sells

Dec 2013 to Dec 2014 Vs Previous Year



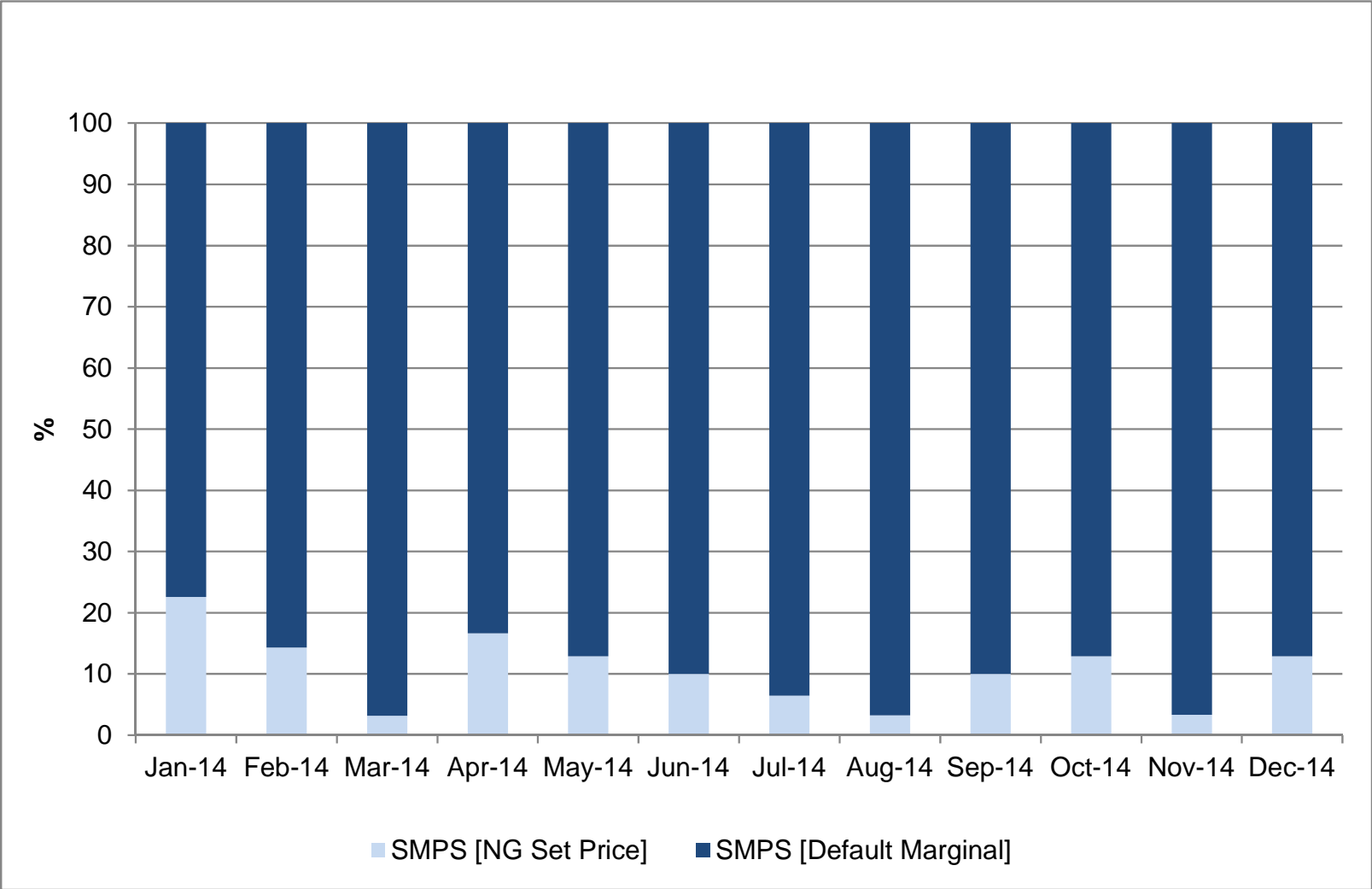
Days of Default SMP Prices [SMPB]

From Jan 2014 to Dec 2014



Days of Default SMP Prices [SMPS]

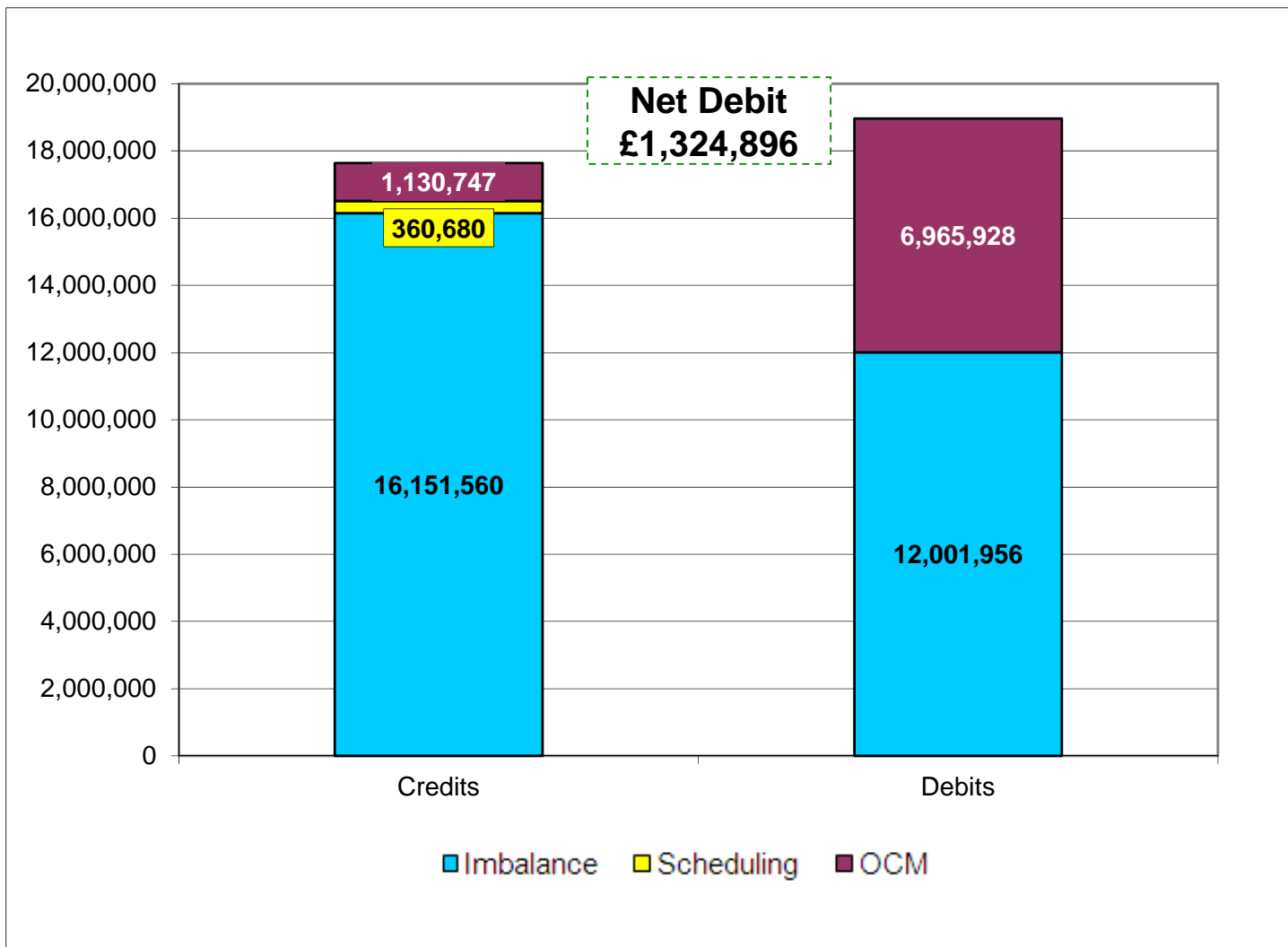
From Jan 2014 to Dec 2014



Energy Balancing – Balancing Costs

Payments / Charges / Net Credit / Debit [Imbalance / Scheduling / OCM]

Nov 2014



Energy Balancing – Balancing Costs

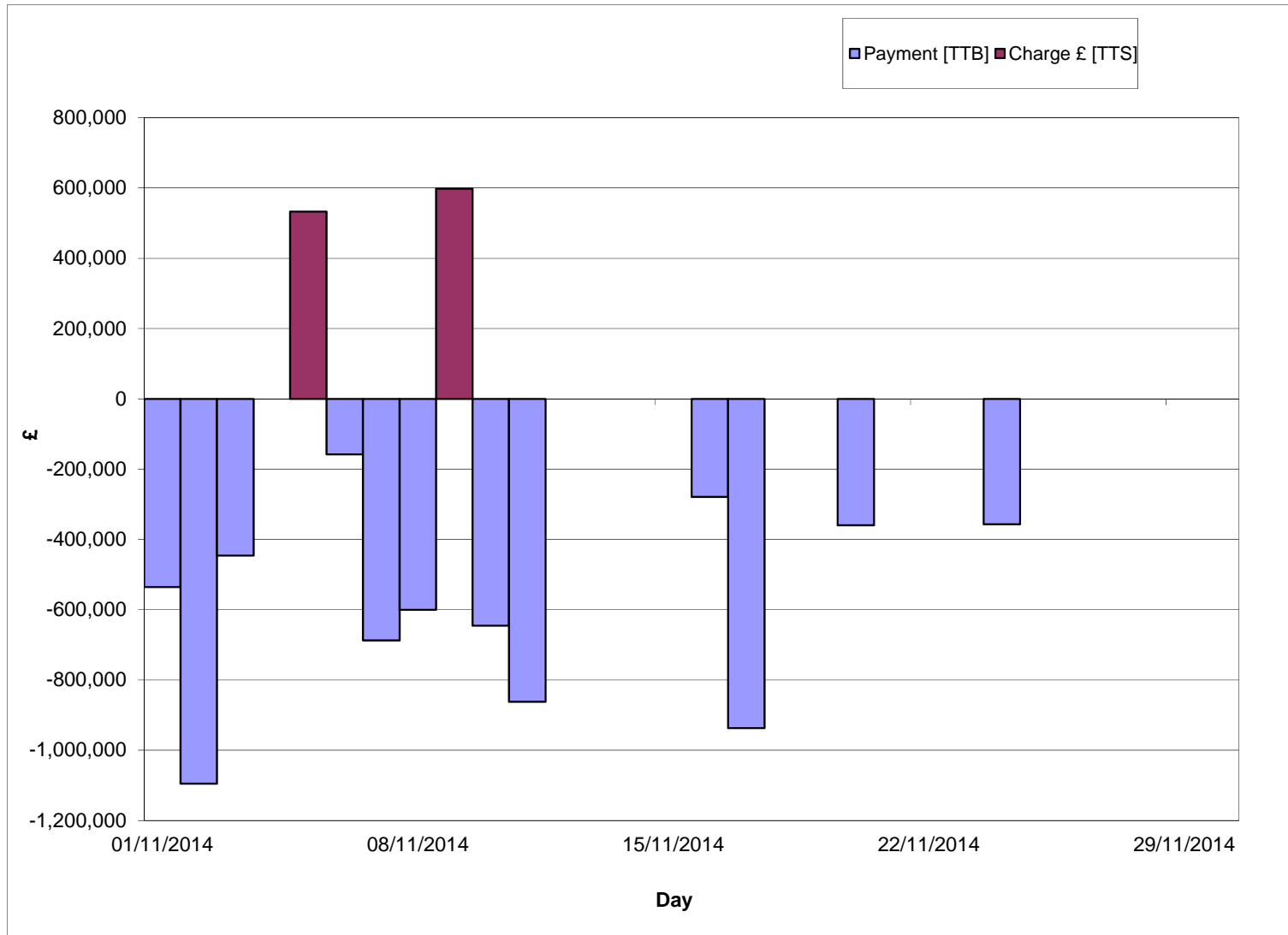
Nov 2014

nationalgrid

		Nov-14
Imbalance	Payment £ [DCS]	-12,001,956
	Charge £ [DCT]	16,151,560
Scheduling	Exit Charge £ [DXS]	9,355
	Exit Charge £ [EXS]	76,590
	Entry Charge £ [ESC]	274,735
OCM	Payment £ [TTB]	-6,965,928
	Charge £ [TTS]	1,130,747
Balancing Costs		-1,324,896

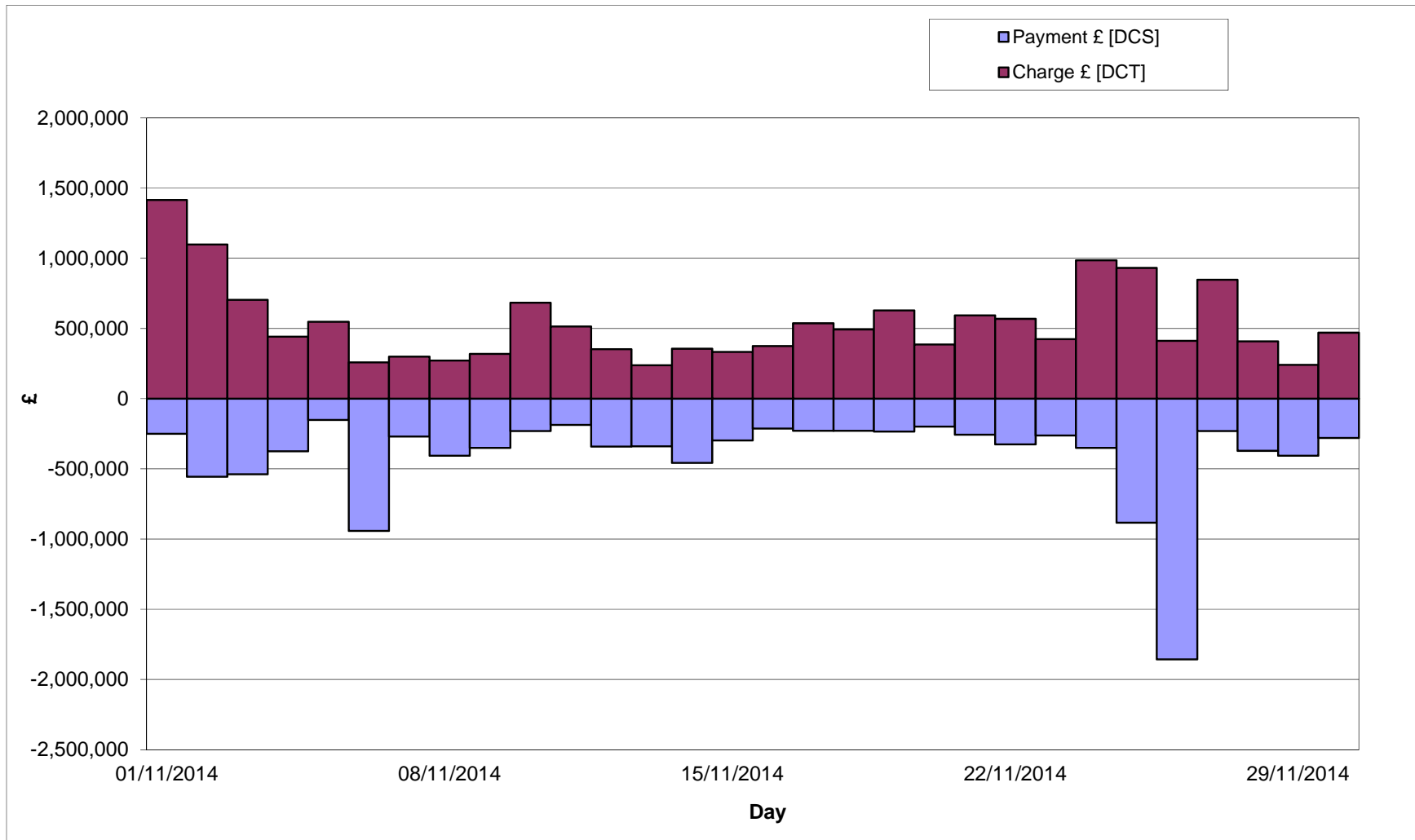
Energy Balancing – Balancing Costs

OCM Payments / Charges
Nov 2014



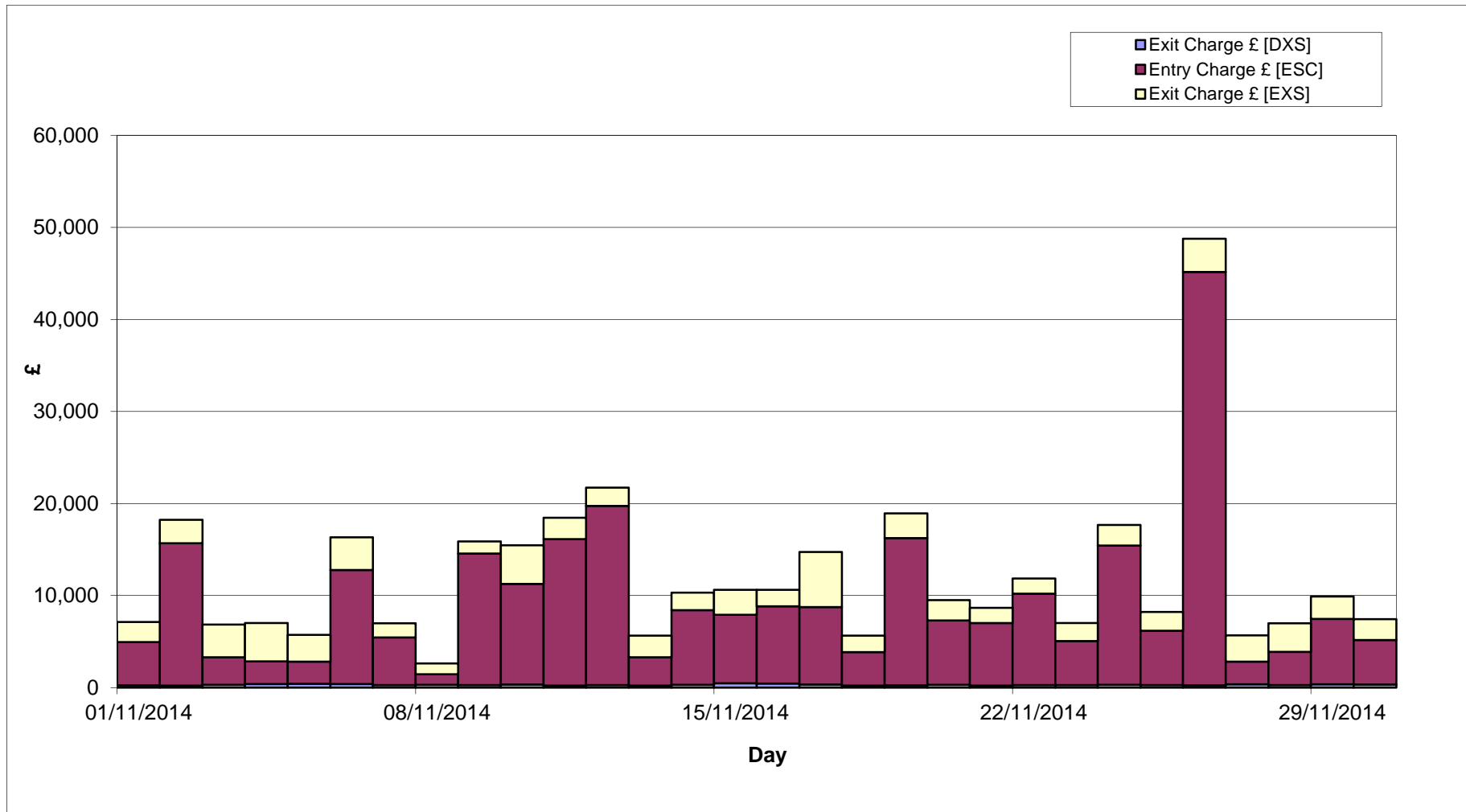
Energy Balancing – Balancing Costs

Imbalance Payments / Charges
Nov 2014



Energy Balancing – Balancing Costs

Scheduling Charges
Nov 2014



Capacity Neutrality

Net Cost / Revenue From 1st April 2014 to 31st December 2014

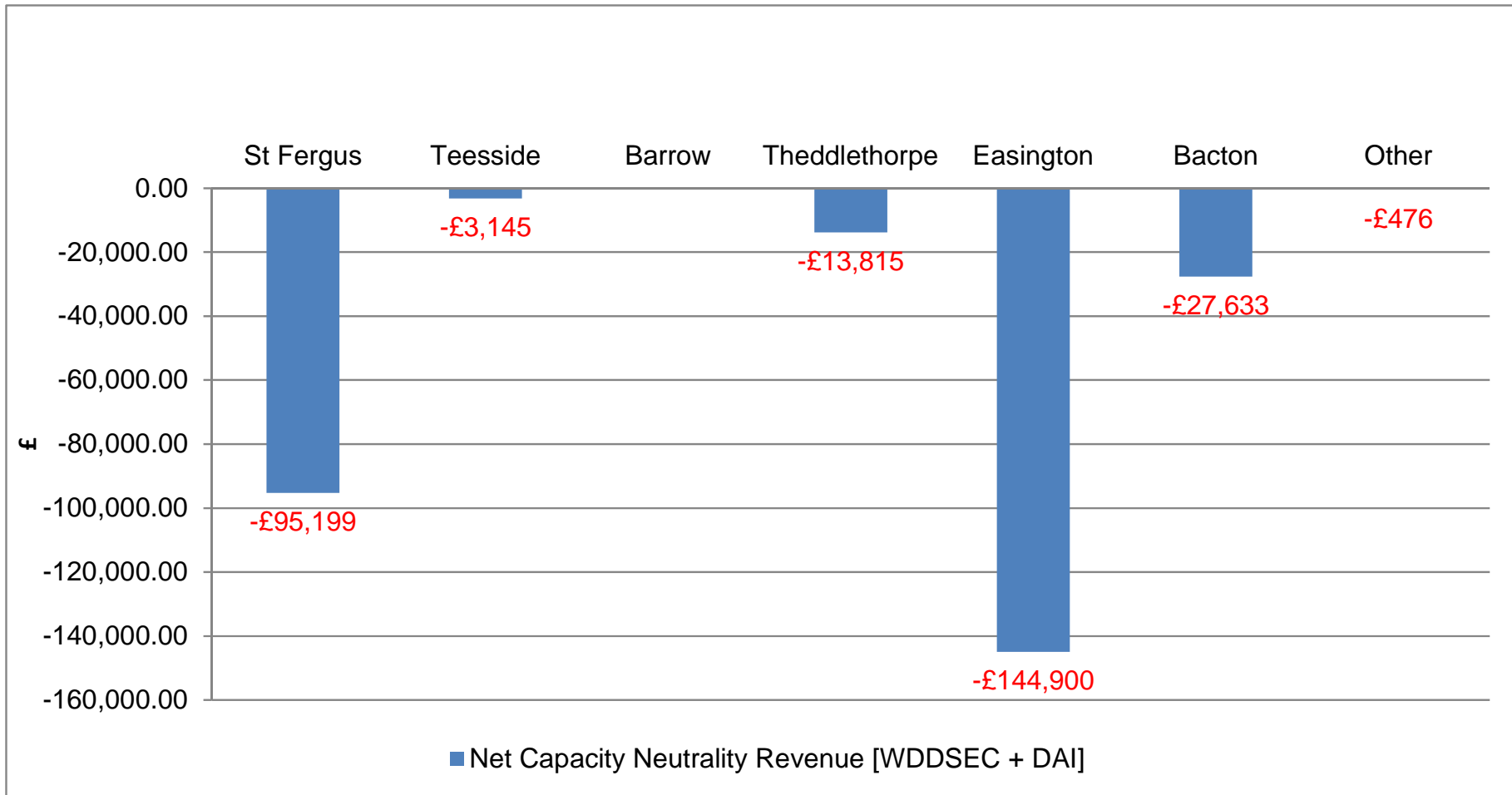
	Revenue/Costs
WDDSEC/DAI Entry Capacity Revenue	-£285,169
Total Entry Constraint Management Operational Costs	£0
Entry Capacity Overrun Revenue	-£237,055
Non-Obligated Sales Revenue (Entry only)	-£47,851
Revenue from Locational Sells and PRI Charges	£0
Net Revenue	-£570,075

Net Capacity Neutrality Revenue



[Daily Obligated Entry Capacity and Interruptible Entry Capacity: WDDSEC + DAI]

From 1st April 2014 to 31st December 2014



Capacity Neutrality

Revenues from Entry Cap Overruns and Non-Obligated Sales,
and Locational Sells and PRI Charges.

Totals From 1st April 2014 to 31st March 2015

nationalgrid

Month	Entry Cap Overrun Revenue	Non-obligated sales revenue (entry)
Apr-14	-£5,048	-£253
May-14	-£8,271	-£108
Jun-14	-£23,853	-
Jul-14	-£34,442	-
Aug-14	-£65,036	-
Sep-14	-£53,269	-£44
Oct-14	-£18,457	-£15,919
Nov-14	-£28,680	-£15,415
Dec-14	NOT YET AVAILABLE	-£16,113
Jan-15	-	-
Feb-15	-	-
Mar-15	-	-
Total	-£237,055 (FY14-15)	-£47,851(FY14-15)

Month	Locational Sells and PRI charges revenue
Apr-14	£0
May-14	£0
Jun-14	£0
Jul-14	£0
Aug-14	£0
Sep-14	£0
Oct-14	£0
Nov-14	£0
Dec-14	£0
Jan-15	£0
Feb-15	£0
Mar-15	£0
Total	£0 (FY14/15)