

System Management Principles Statement



- **Compliance report for November 2014**
- **Summary of balancing actions and breaches for November 2014**
- **Performance compared to last year**

Summary Report

	Nov-14
Total Number of Buy Actions	20
Total Number of Sell Actions	3
Total	23

	Nov-14
Number of Material Breaches	0
Number of Non-Material Breaches	0

	Nov-14	Nov-13
Number of Balancing Actions (Calendar year to date)	265	366
Number of Material Breaches (Calendar year to date)	0	0
Number of Non-Material Breaches (Calendar year to date)	0	0

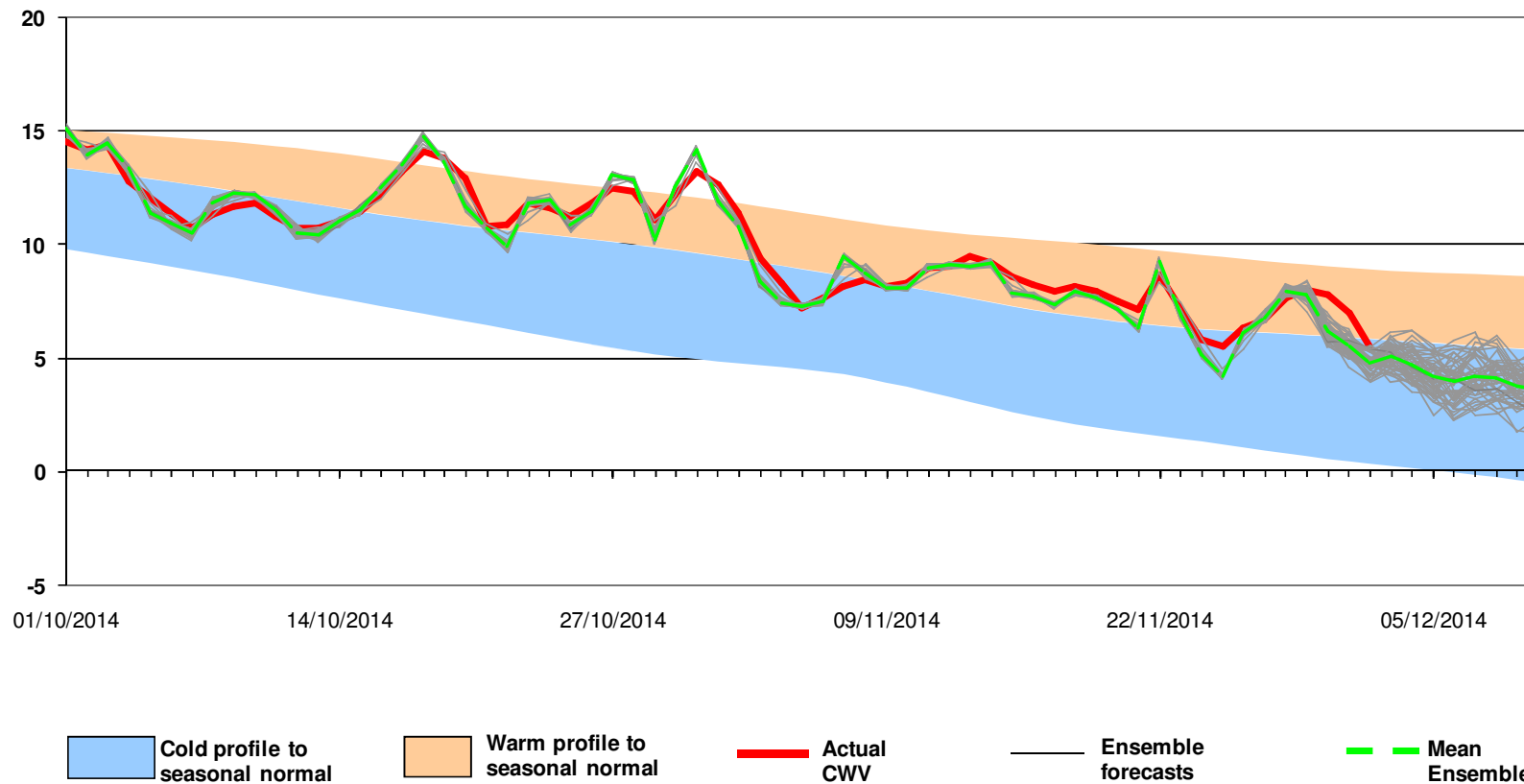
Operational Overview



15 Day Ahead ensemble CWV

October 2014 to December 2014 vs Historical Range

- We are looking at a period which is slightly colder than seasonal normal.
- The highest individual demand, of 334 MCM/d, occurs on 10th December 2014.
- The highest mean ensemble demand, of 304 MCM/d, occurs on 10th December 2014.

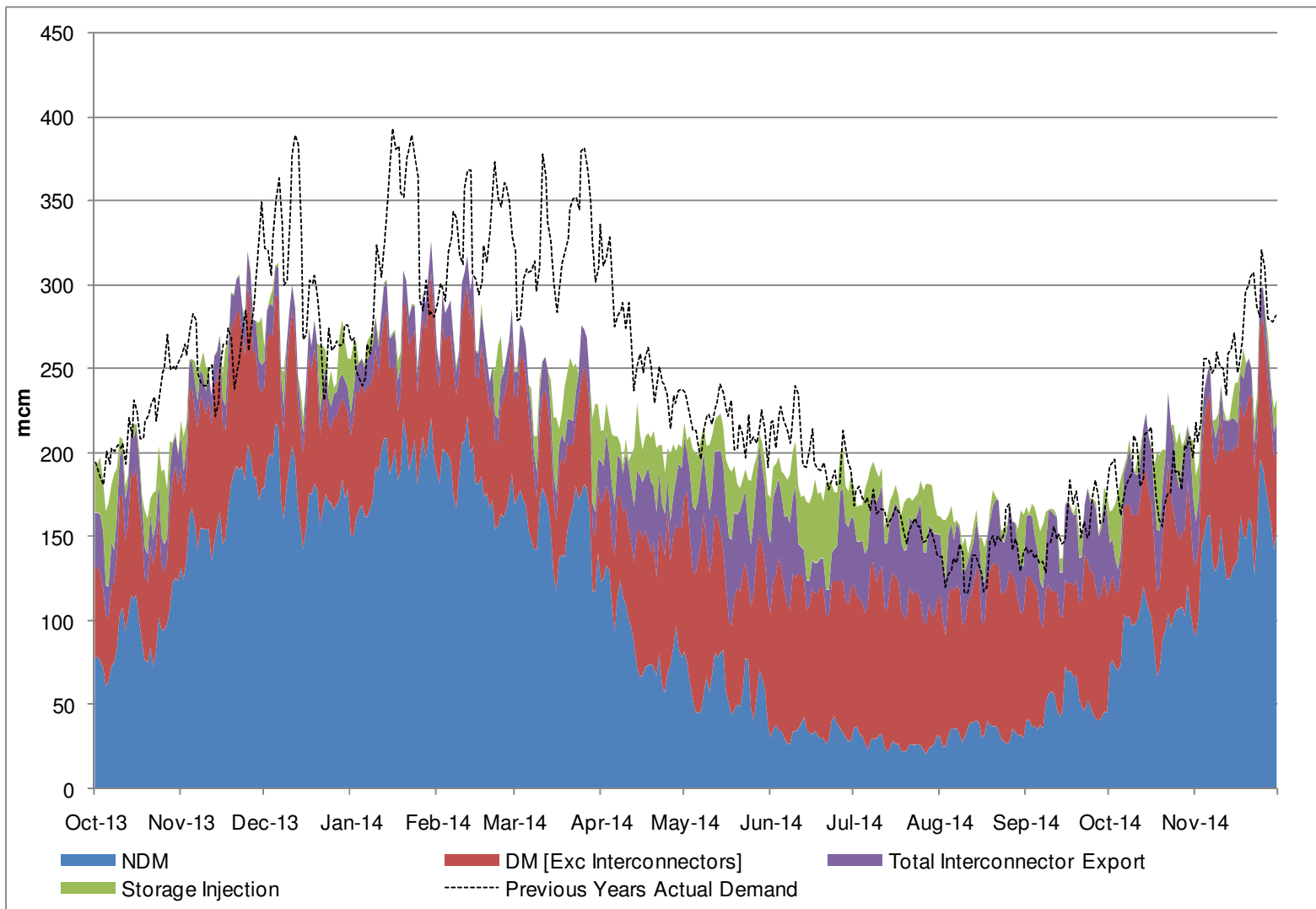


Demands



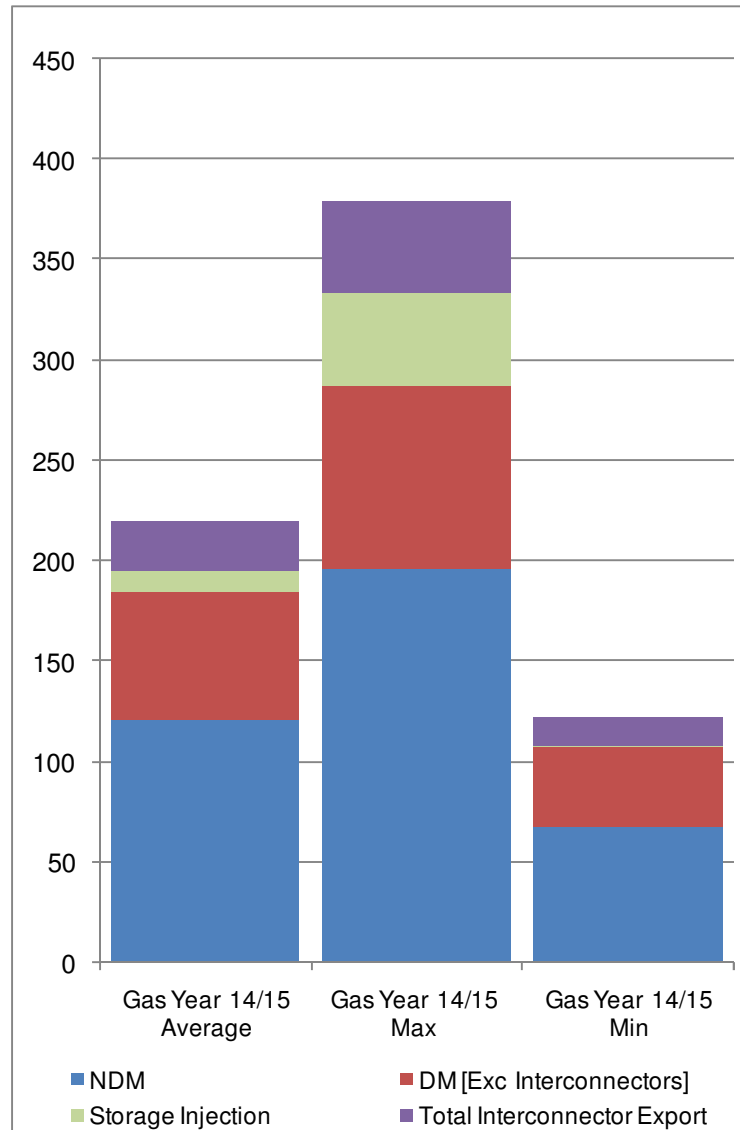
Gas Demand Breakdown

1st October 2013 to 30th November 2014 Vs Previous Year



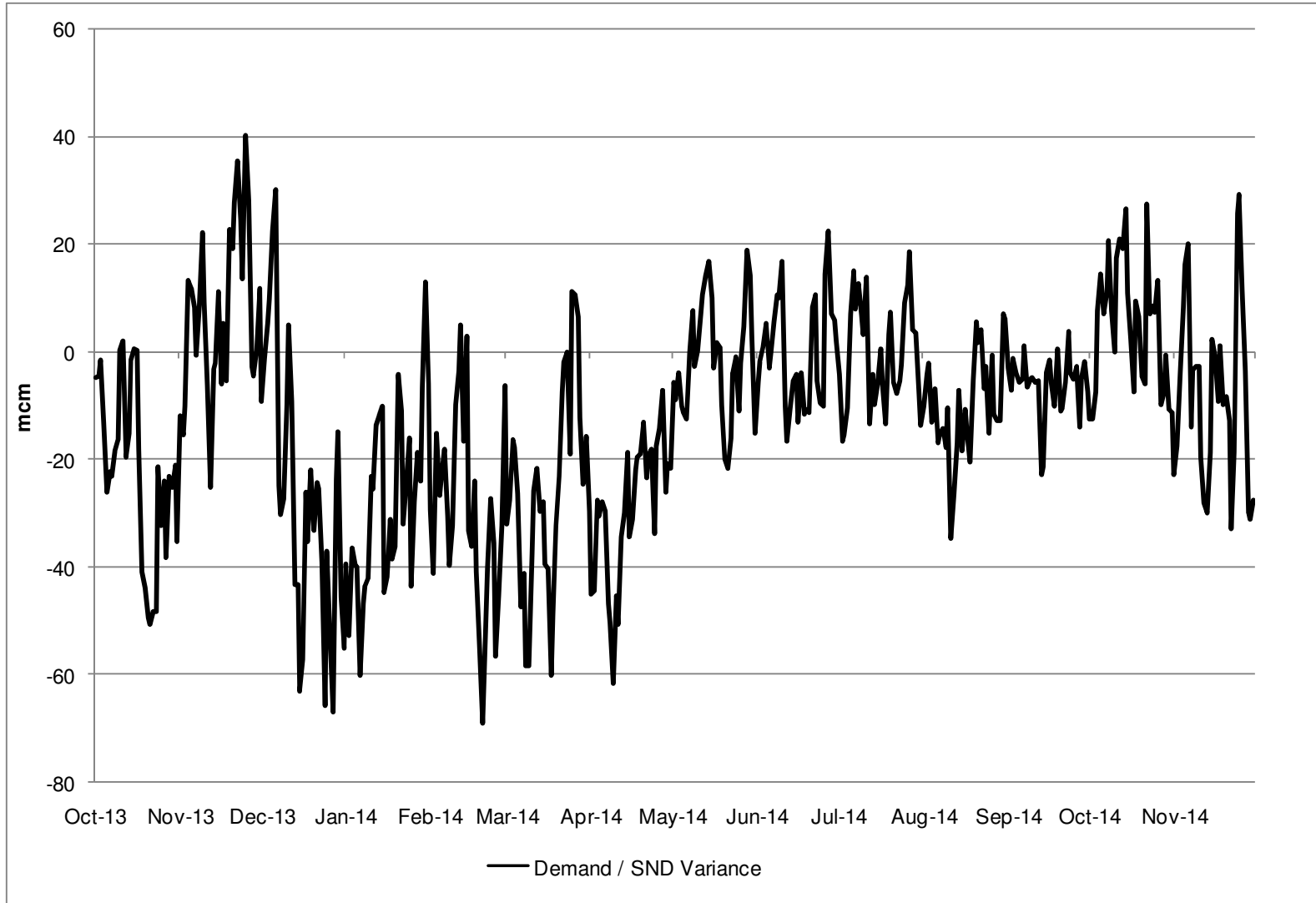
Gas Demand Statistics

1st October 2014 to 30th November 2014



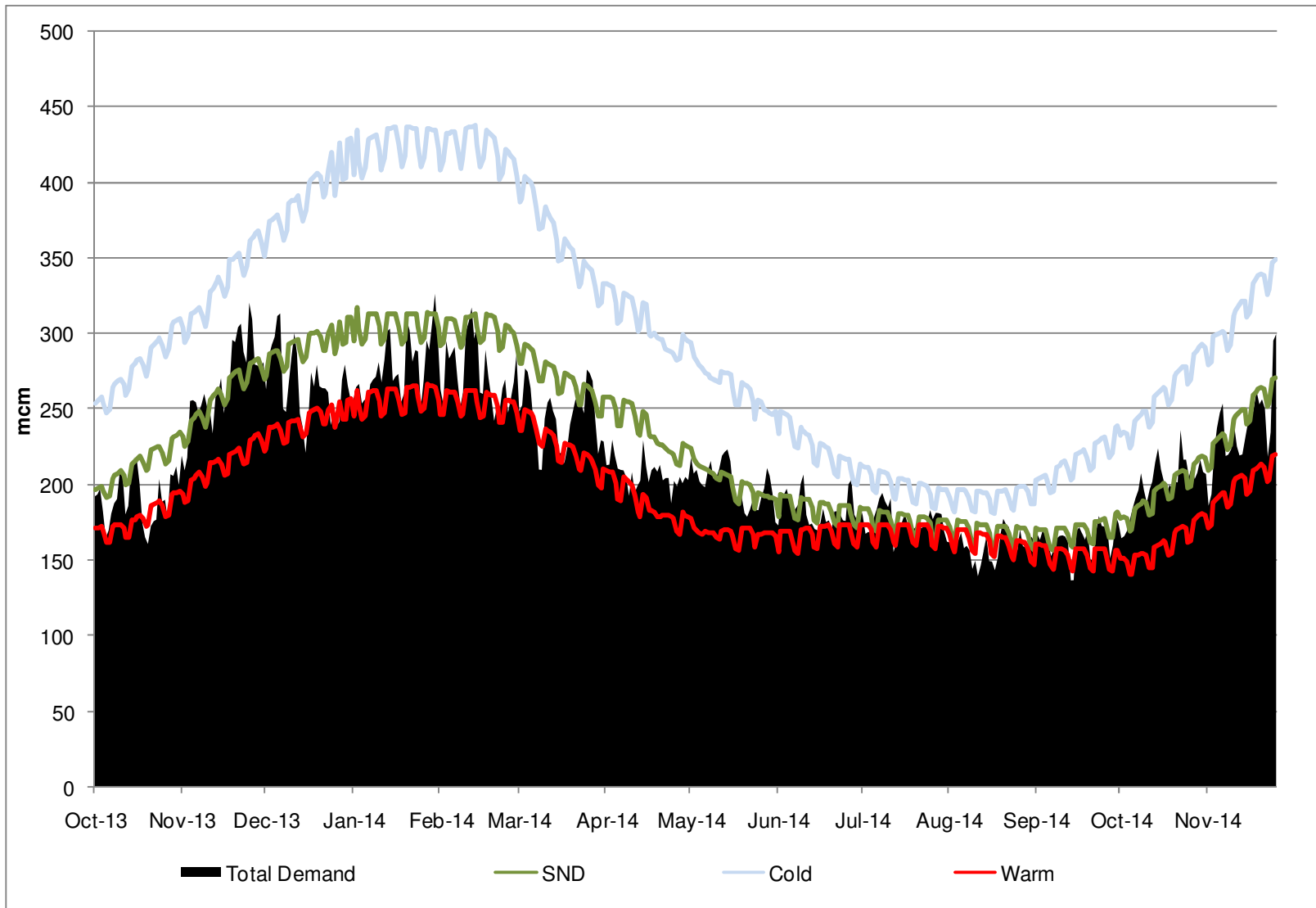
Demand Variance from SND

1st October 2013 to 30th November 2014



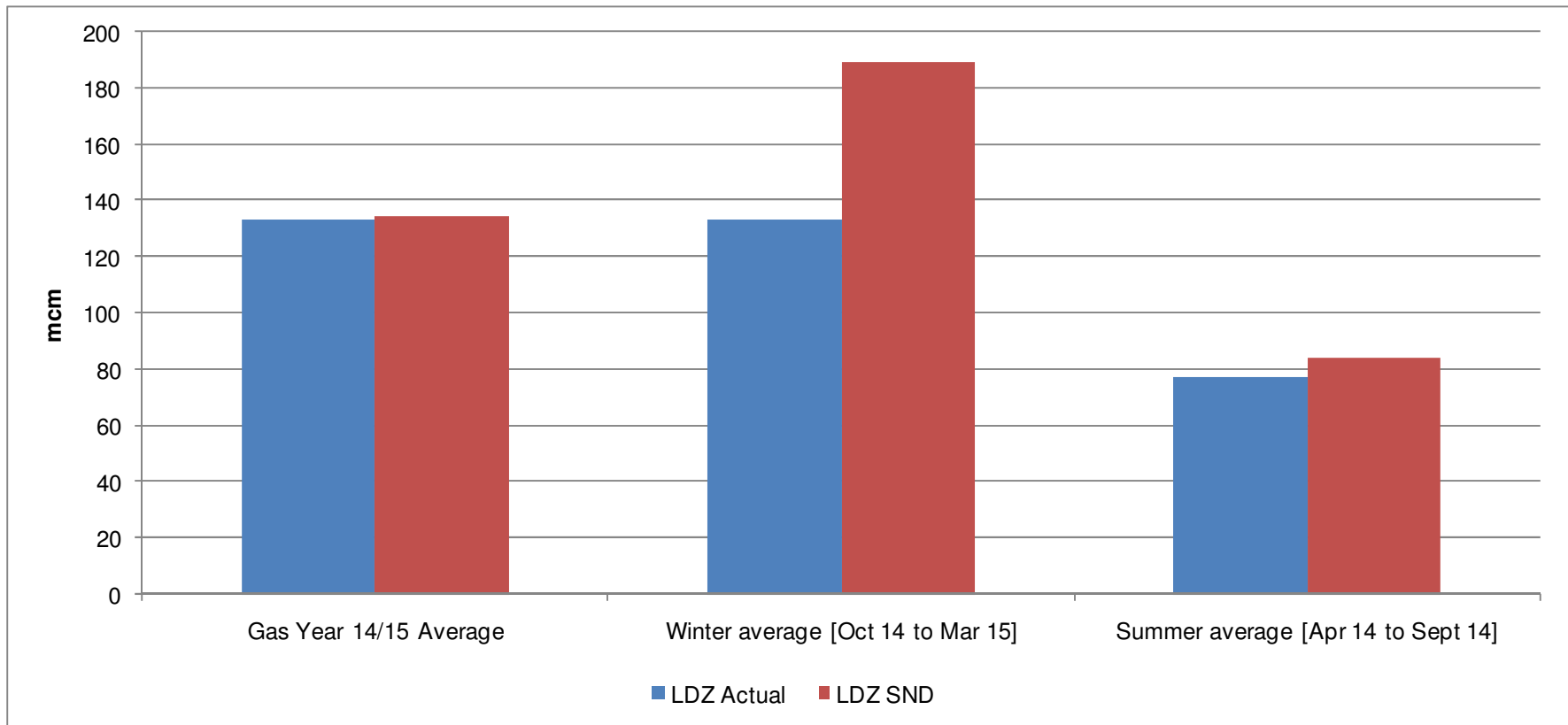
Gas Demand Vs SND / Cold / Warm

1st October 2013 to 30th November 2014



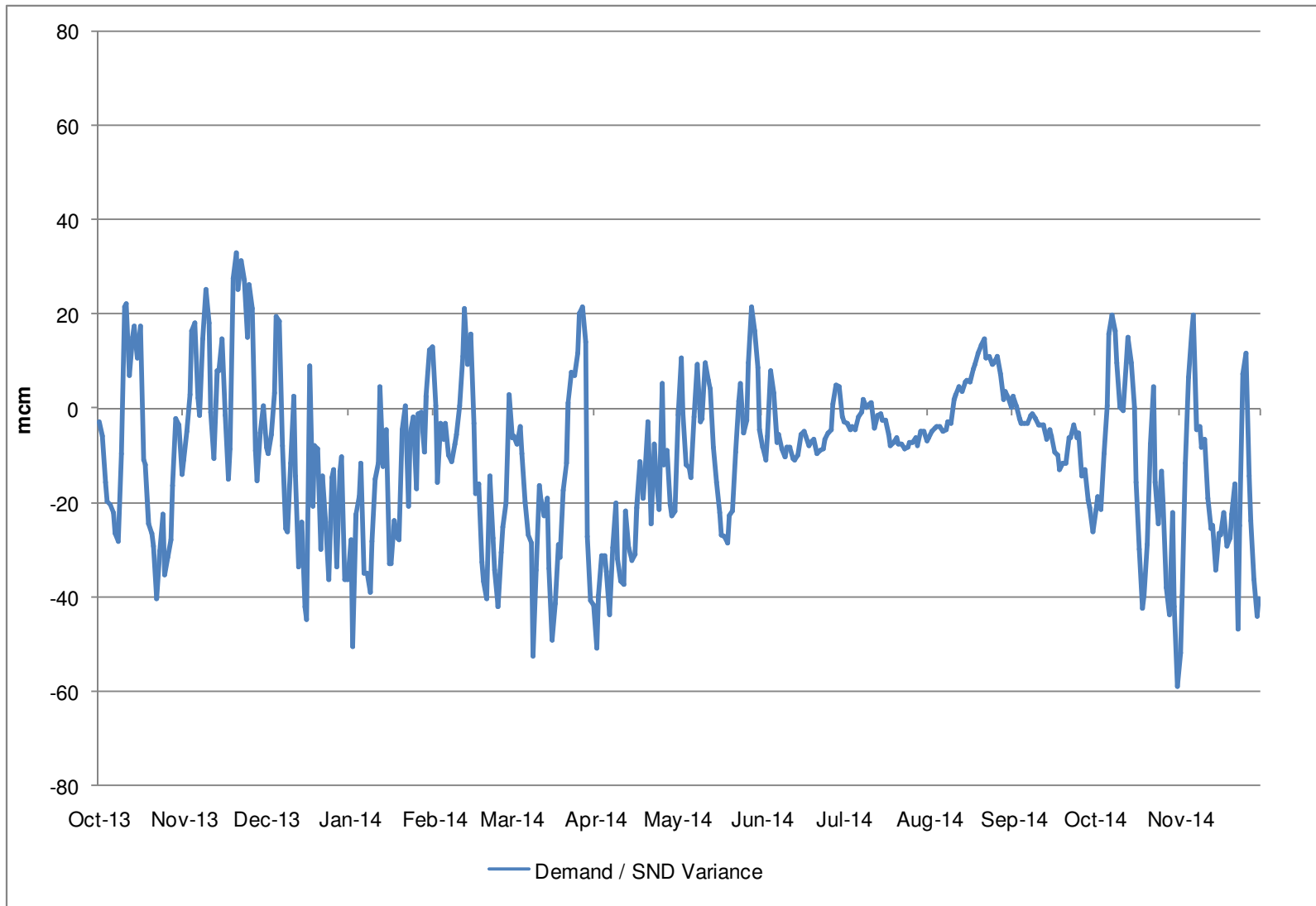
LDZ Actual Demand Vs LDZ SND

1st October 2014 to 30th November 2014



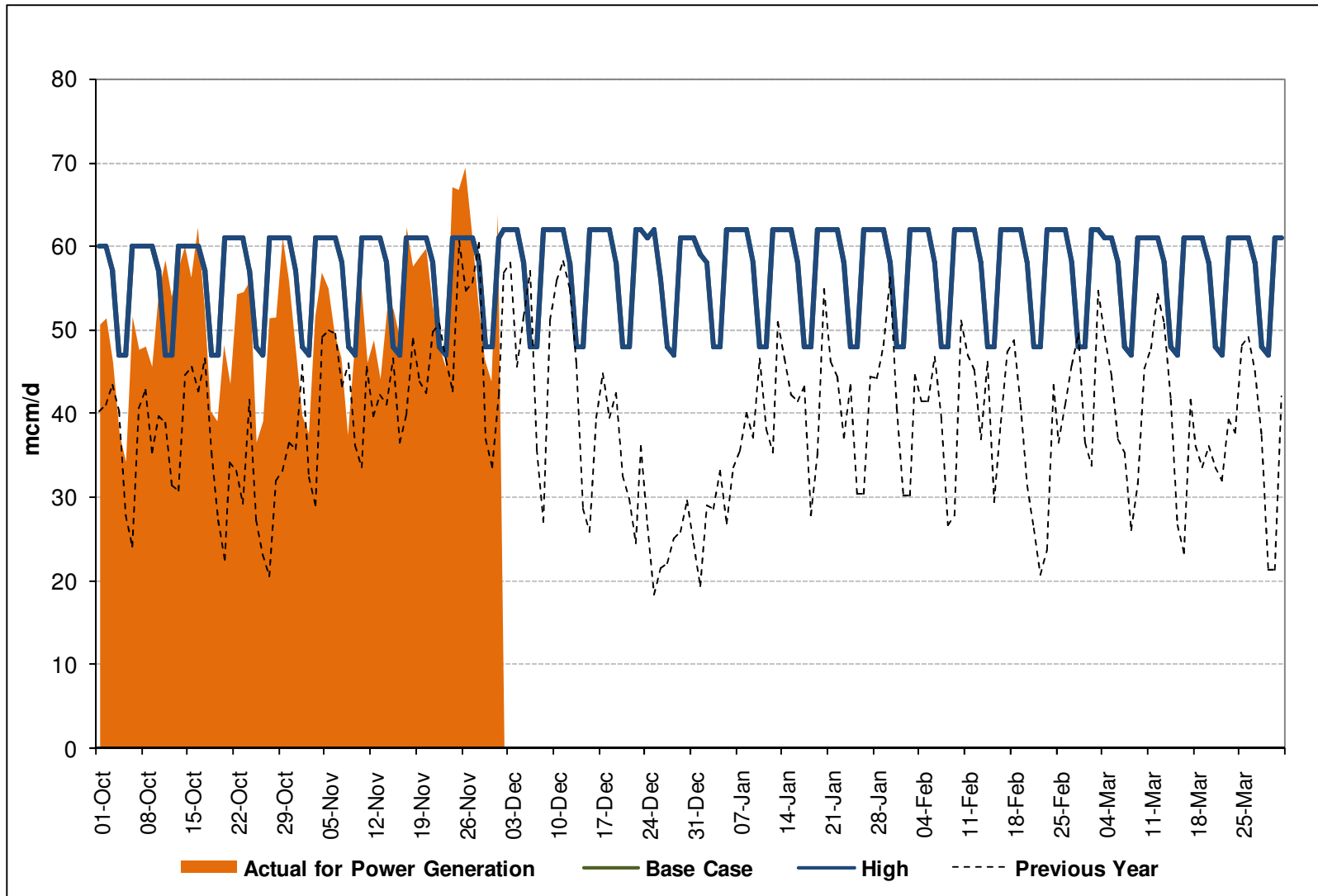
LDZ Demand / LDZ SND Variance

1st October 2013 to 30th November 2014



Gas Consumption for Power Generation

1st October 2014 to 1st December 2014

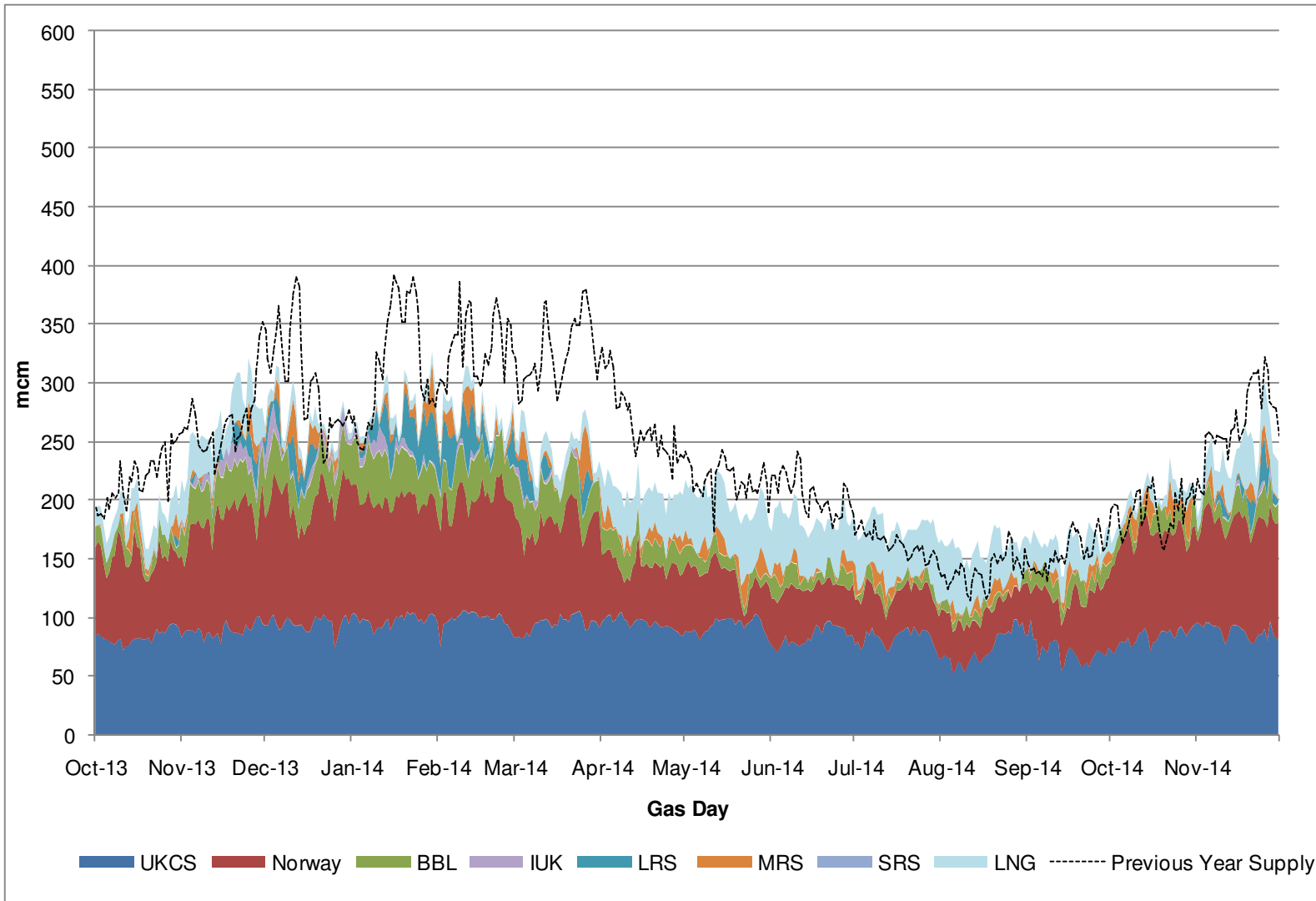


Supplies



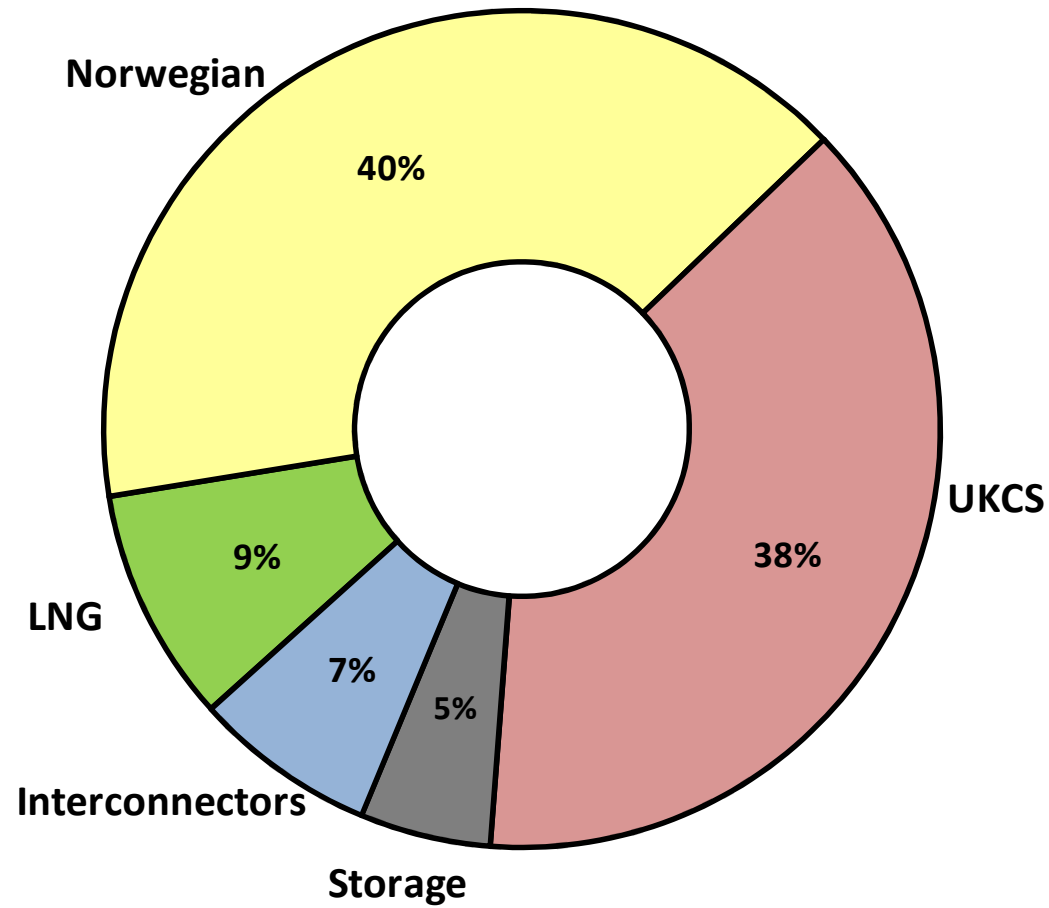
Gas Supply Breakdown

1st October 2013 to 30th November 2014 vs Previous Year



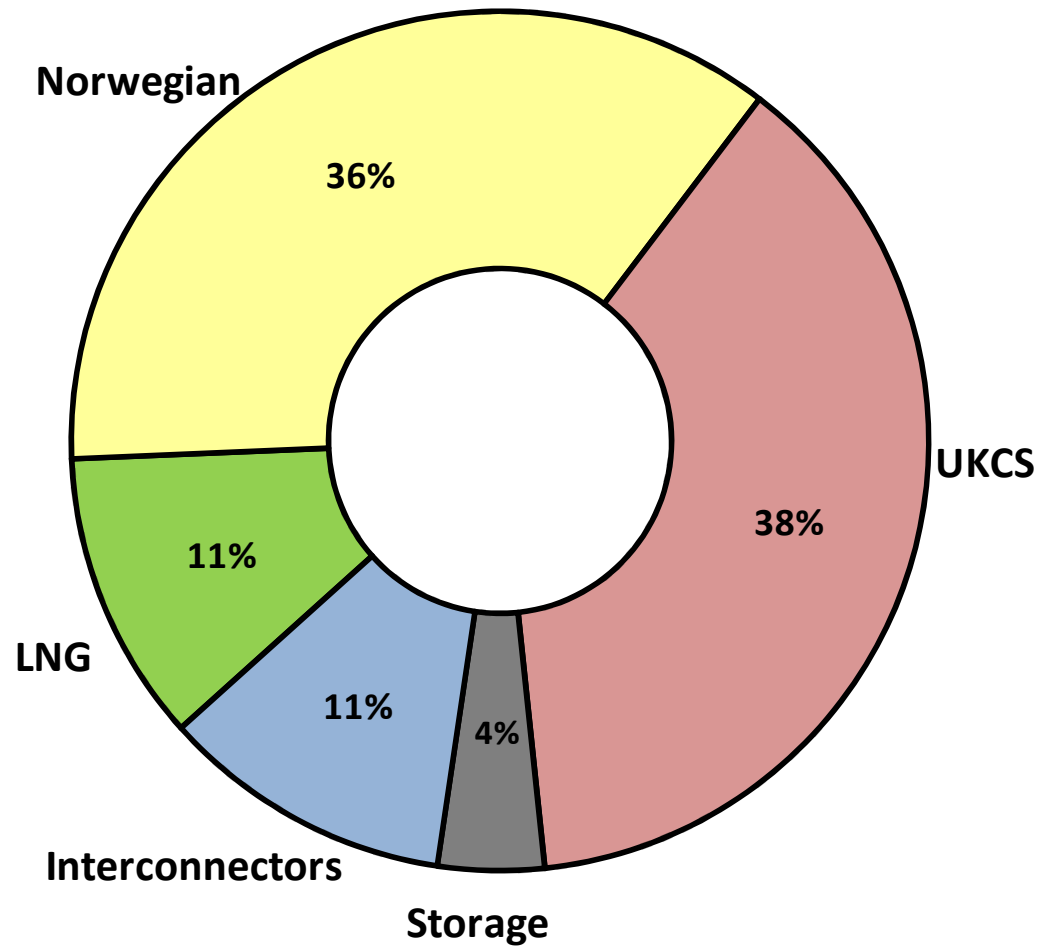
Gas Supply Breakdown

1st October 2014 to 30th November 2014



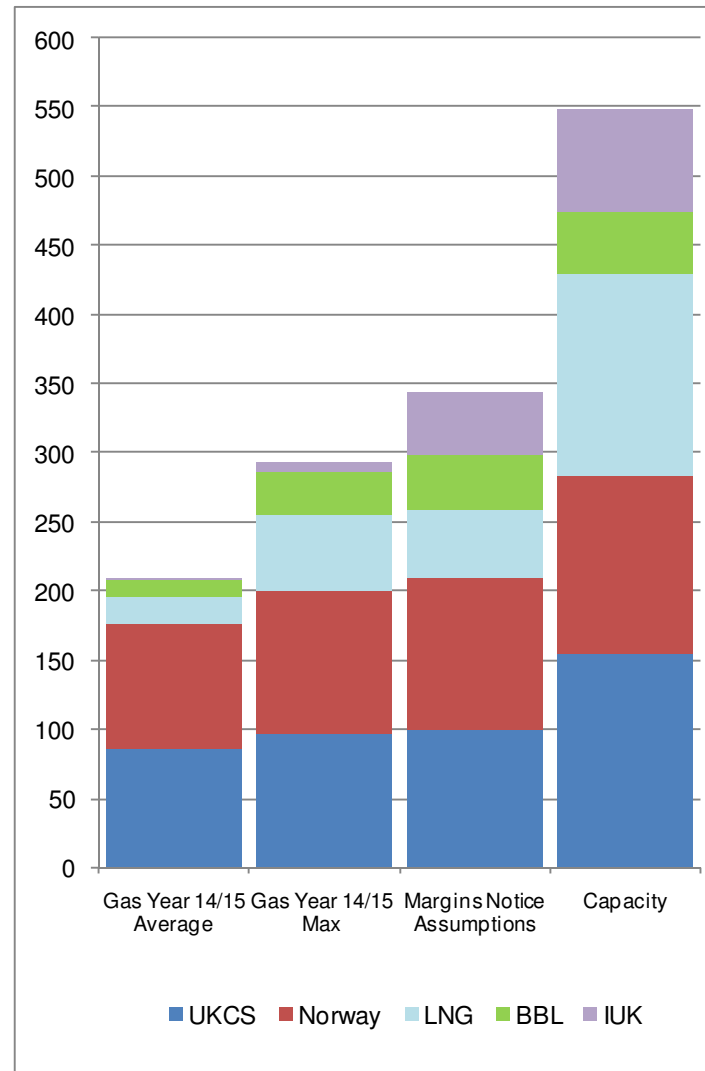
Gas Supply Breakdown

1st October 2013 to 30th November 2013



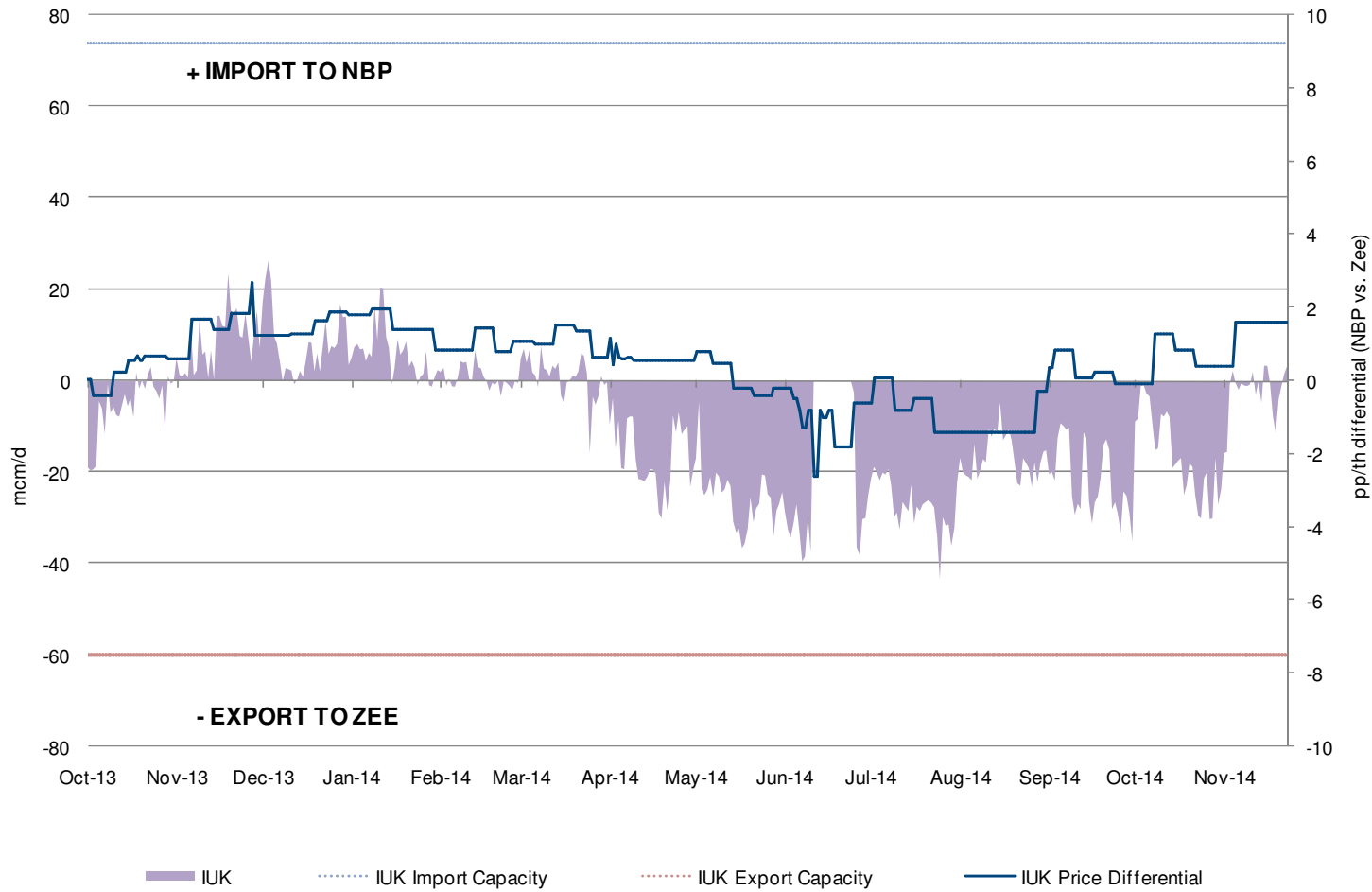
NSS [Non-Storage Supply]

1st October 2014 to 30th November 2014



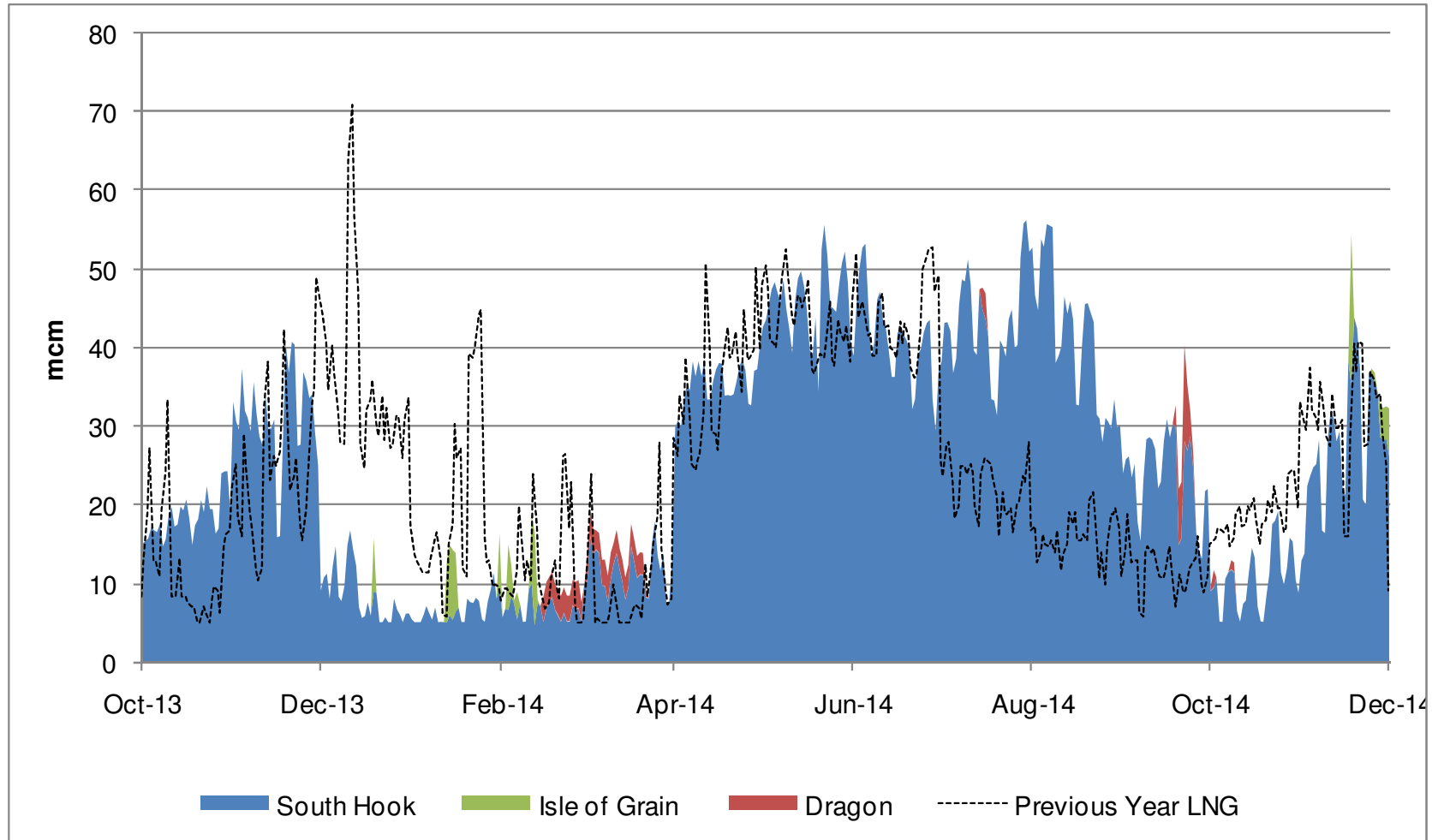
IUK Flows Vs NBP & ZEE Price Differential

1st October 2013 to 27th November 2014



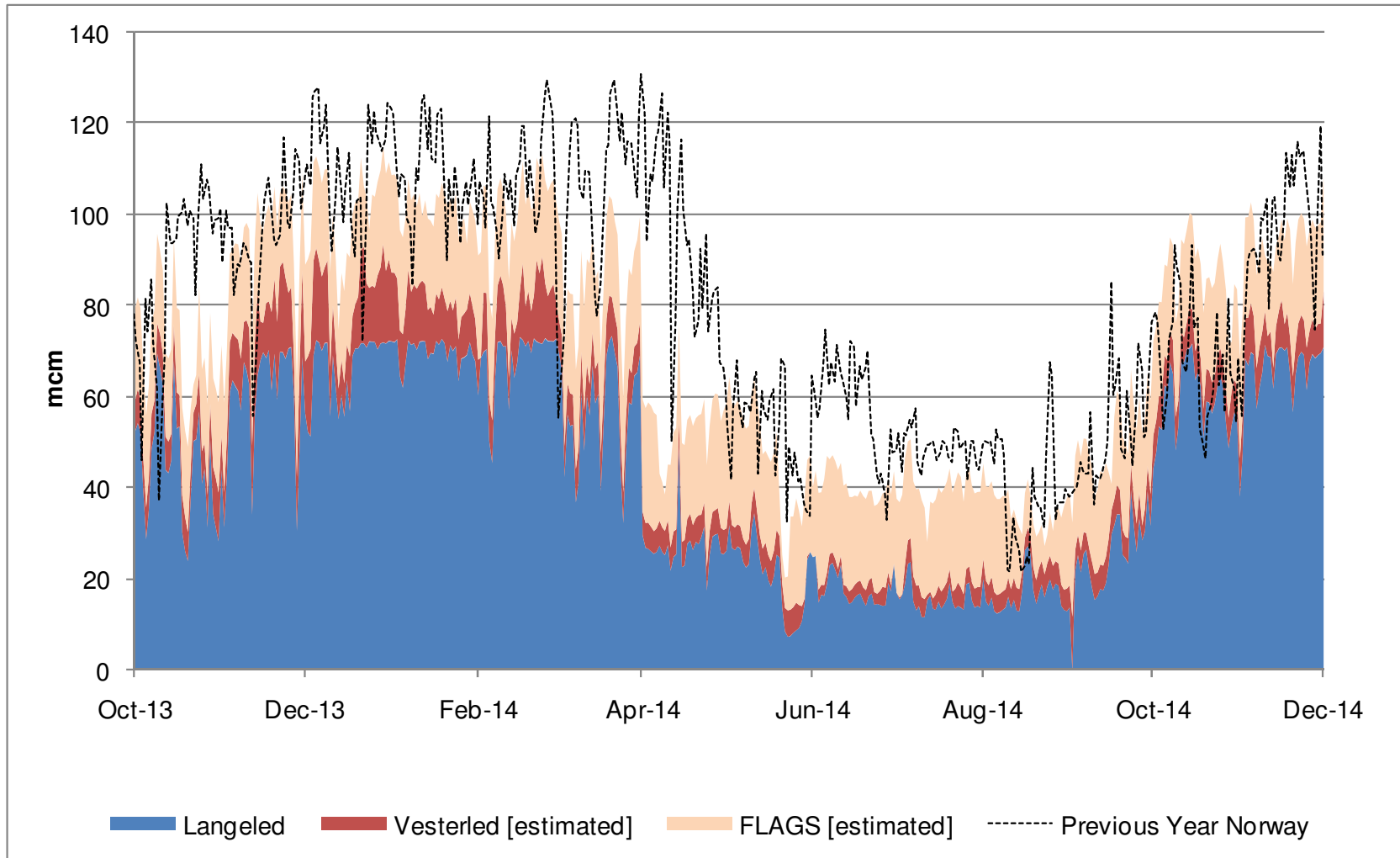
LNG Terminal Flows

1st October 2013 to 1st December 2014



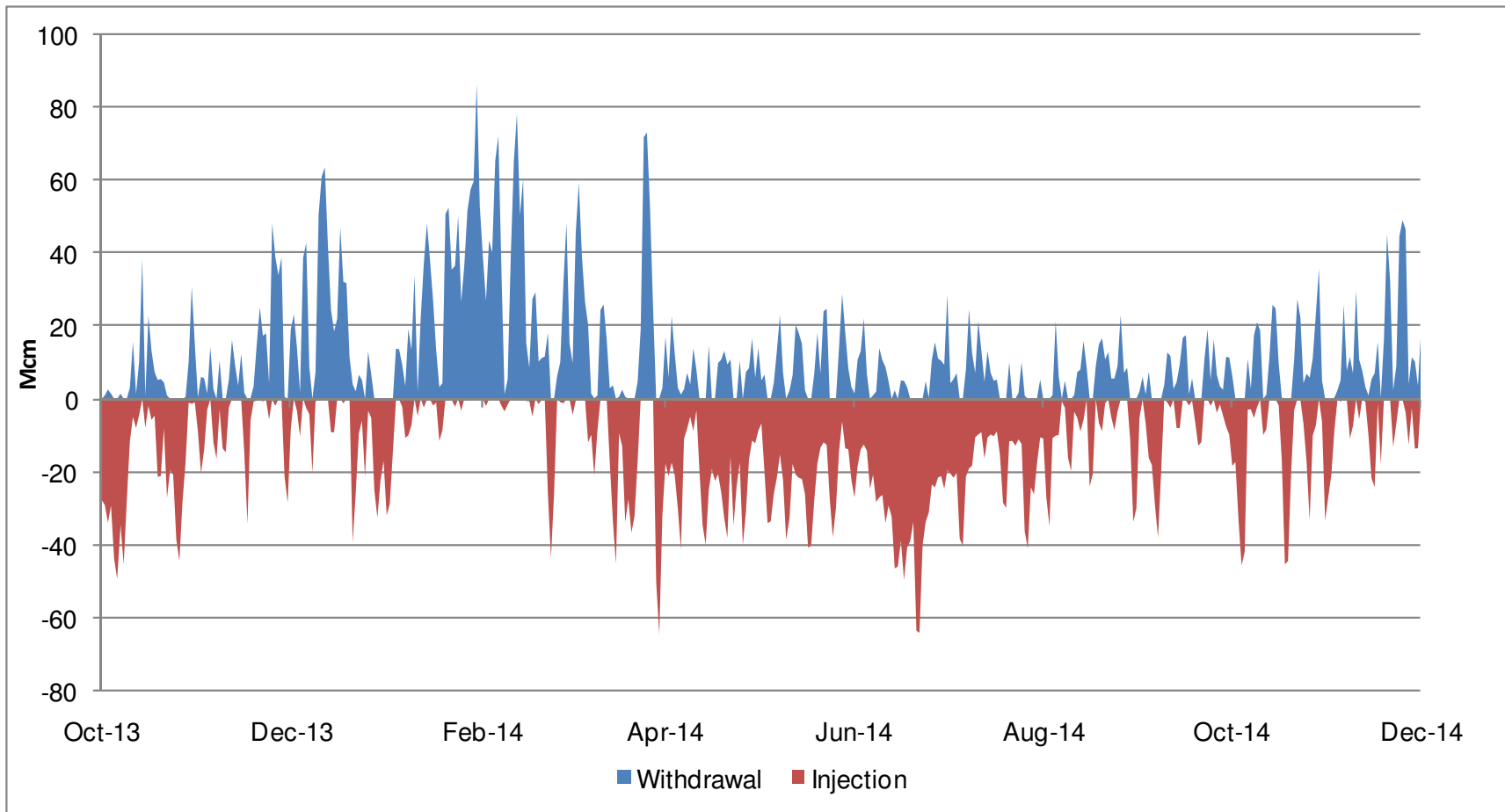
Norway Flows

1st October 2013 to 1st December 2014



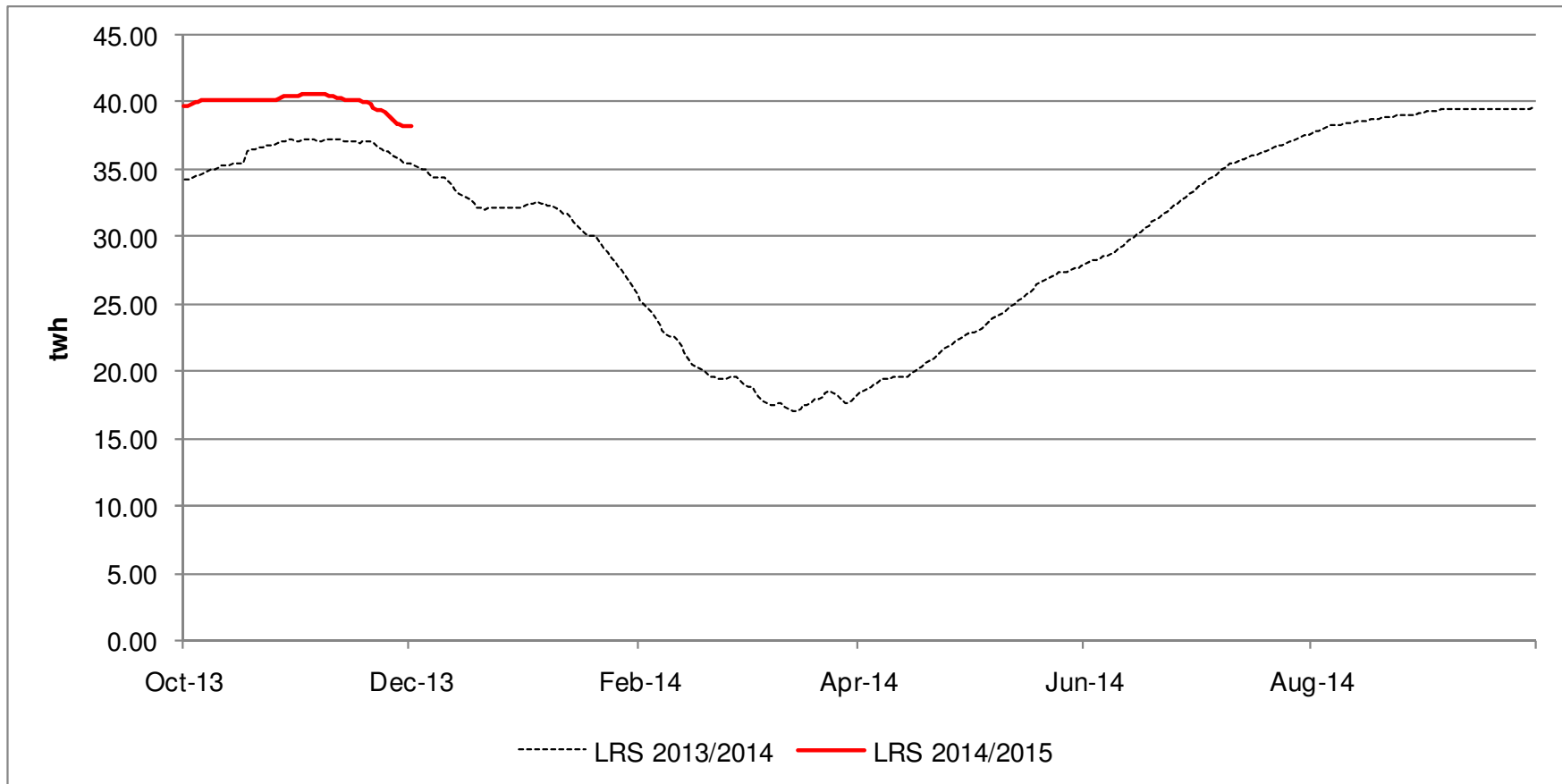
Storage Withdrawal Vs Injection

1st October 2013 to 1st December 2014



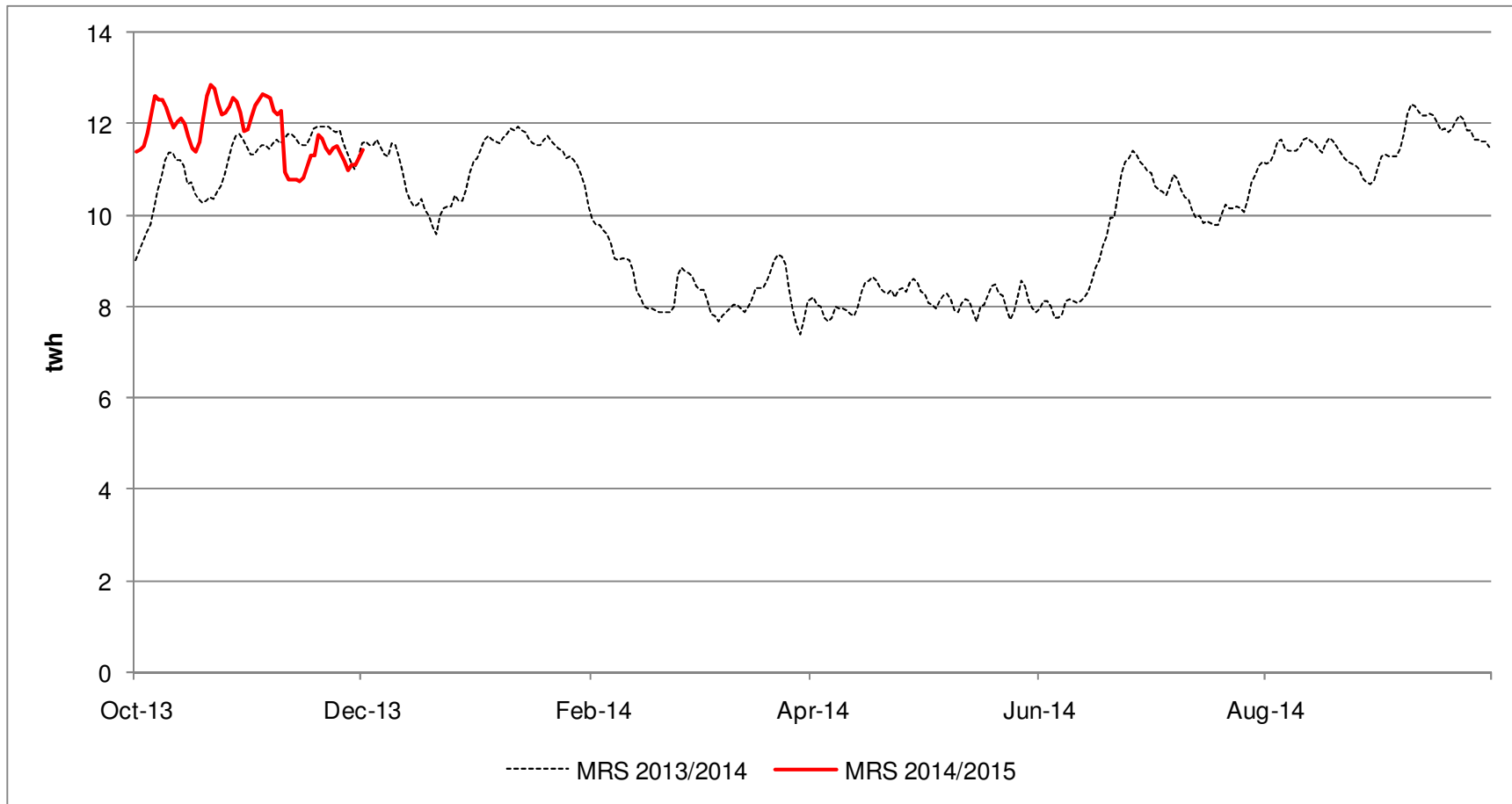
Long Range Storage Stocks [LRS]

1st Oct 2014 to 1st December 2014 Vs Previous Years



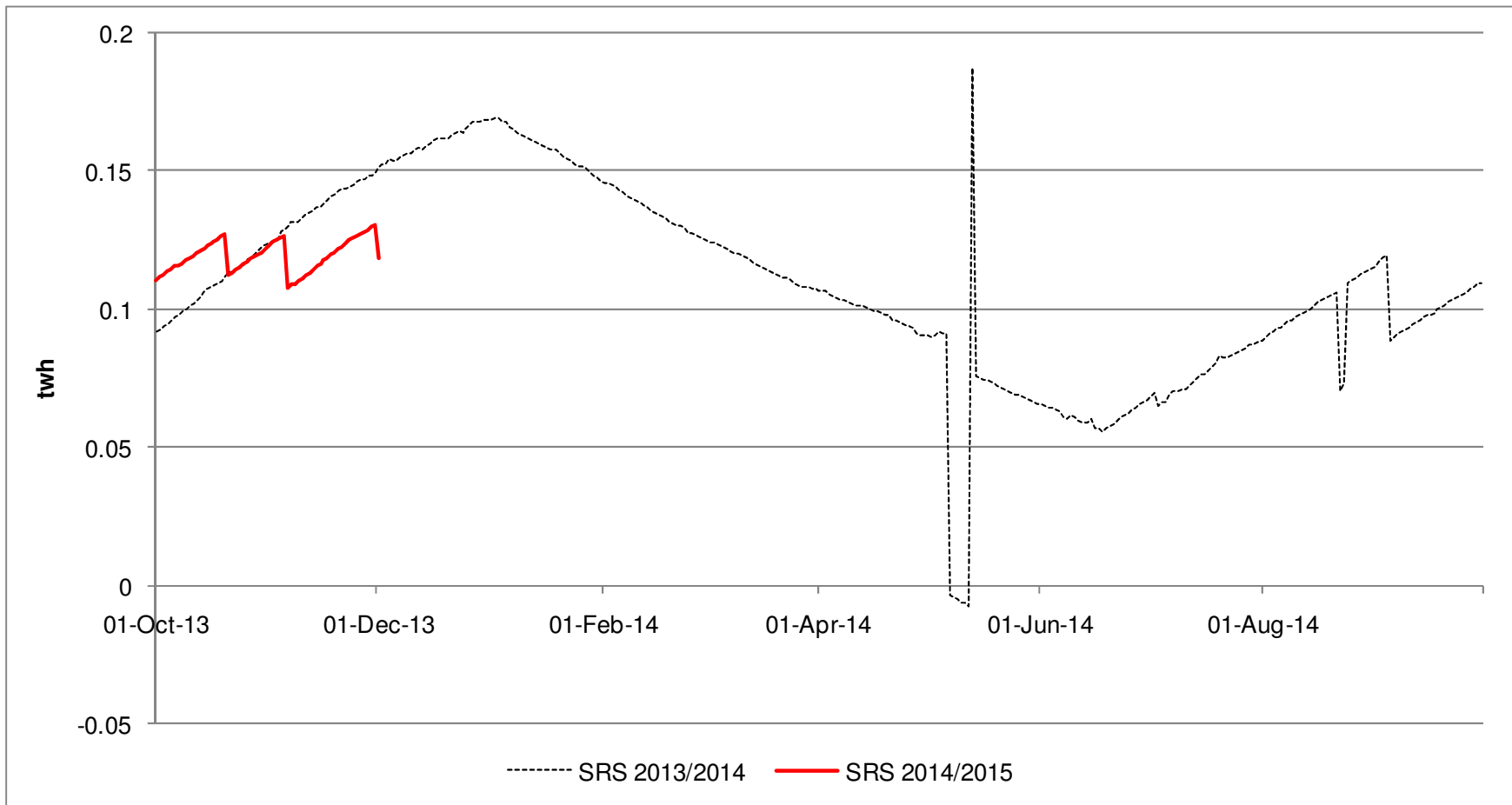
Medium Range Storage Stocks [MRS]

1st Oct 2014 to 1st December 2014 Vs Previous Years



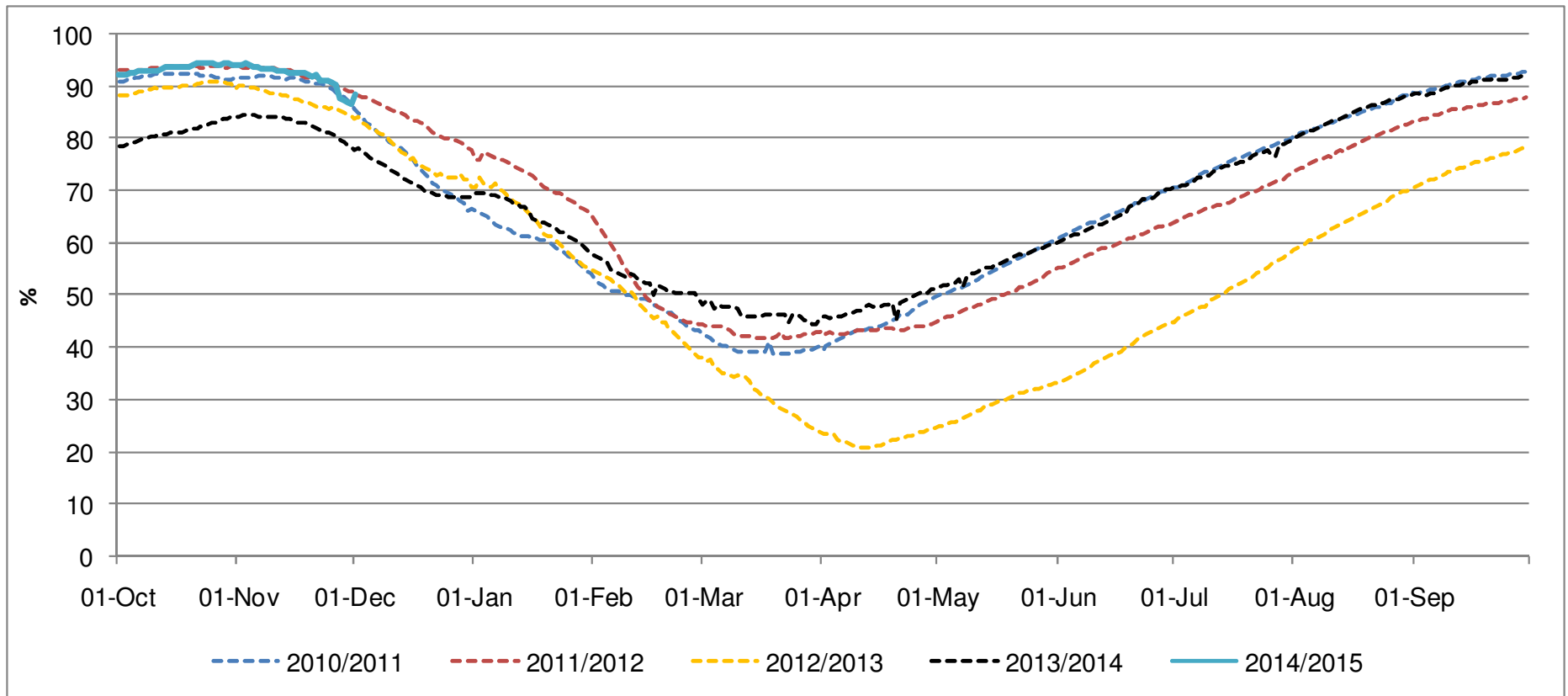
Short Range Storage Stocks [SRS]

1st Oct 2014 to 1st Dec 2014 Vs Previous Years



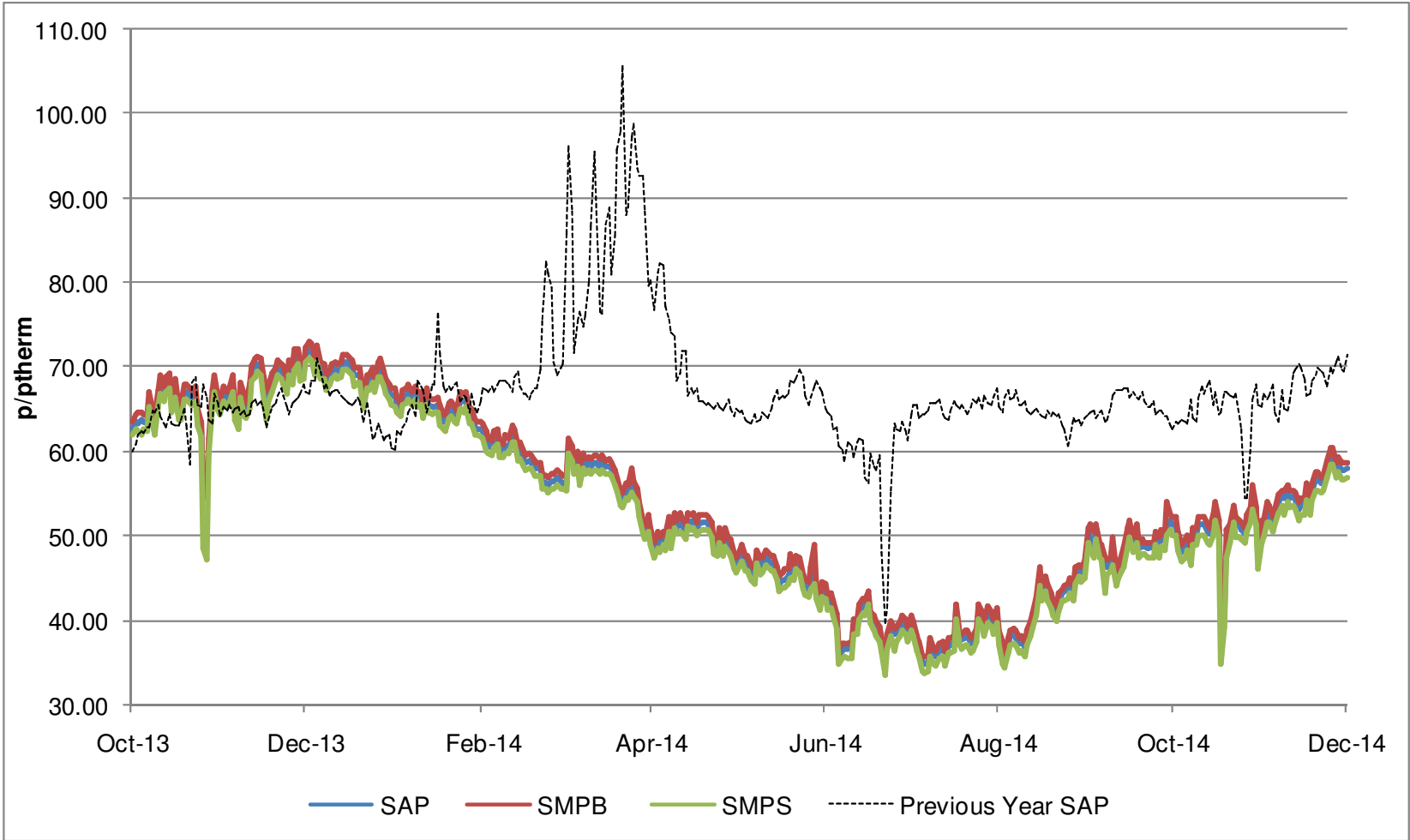
Combined EU Storage Stocks [% Full]

From 1st Oct 2014 to 1st Dec 2014 Vs Previous Years

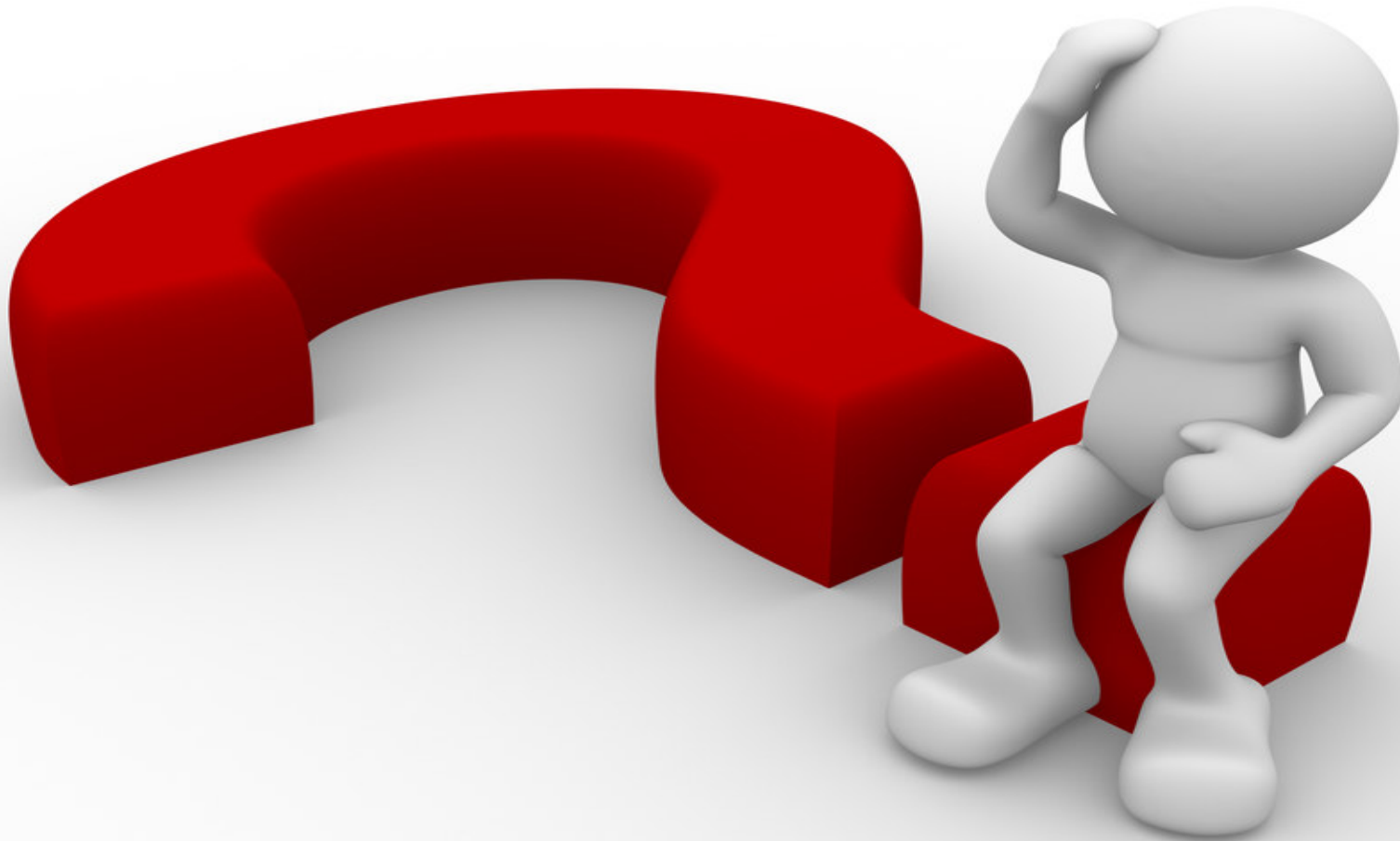


UK Gas Prices

1st Oct 2013 to 1st Dec 2014 Vs Previous Years



What Operational Issues Affected Users?



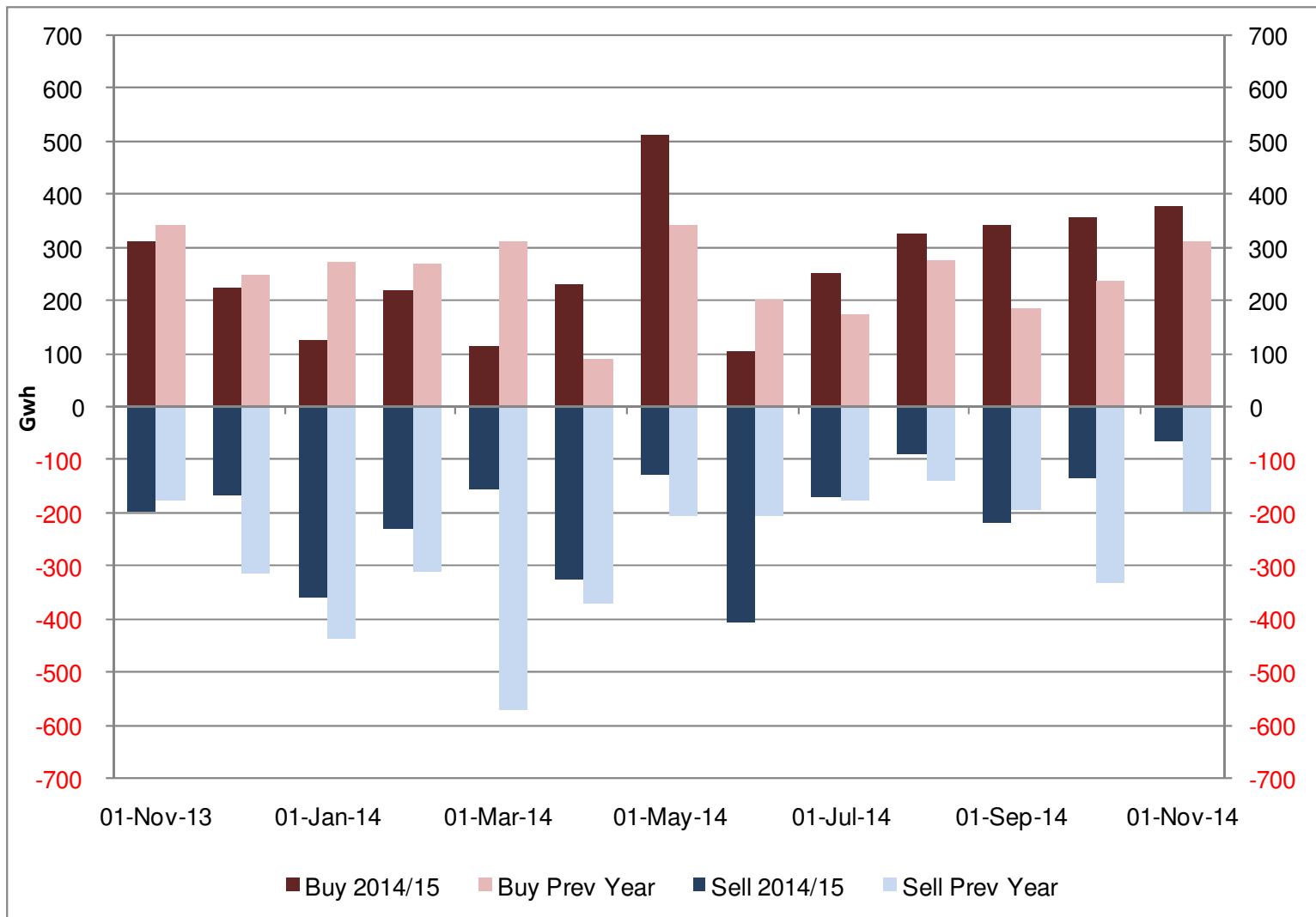
Transporter Actions and Neutrality



- Energy Balancing
- Capacity

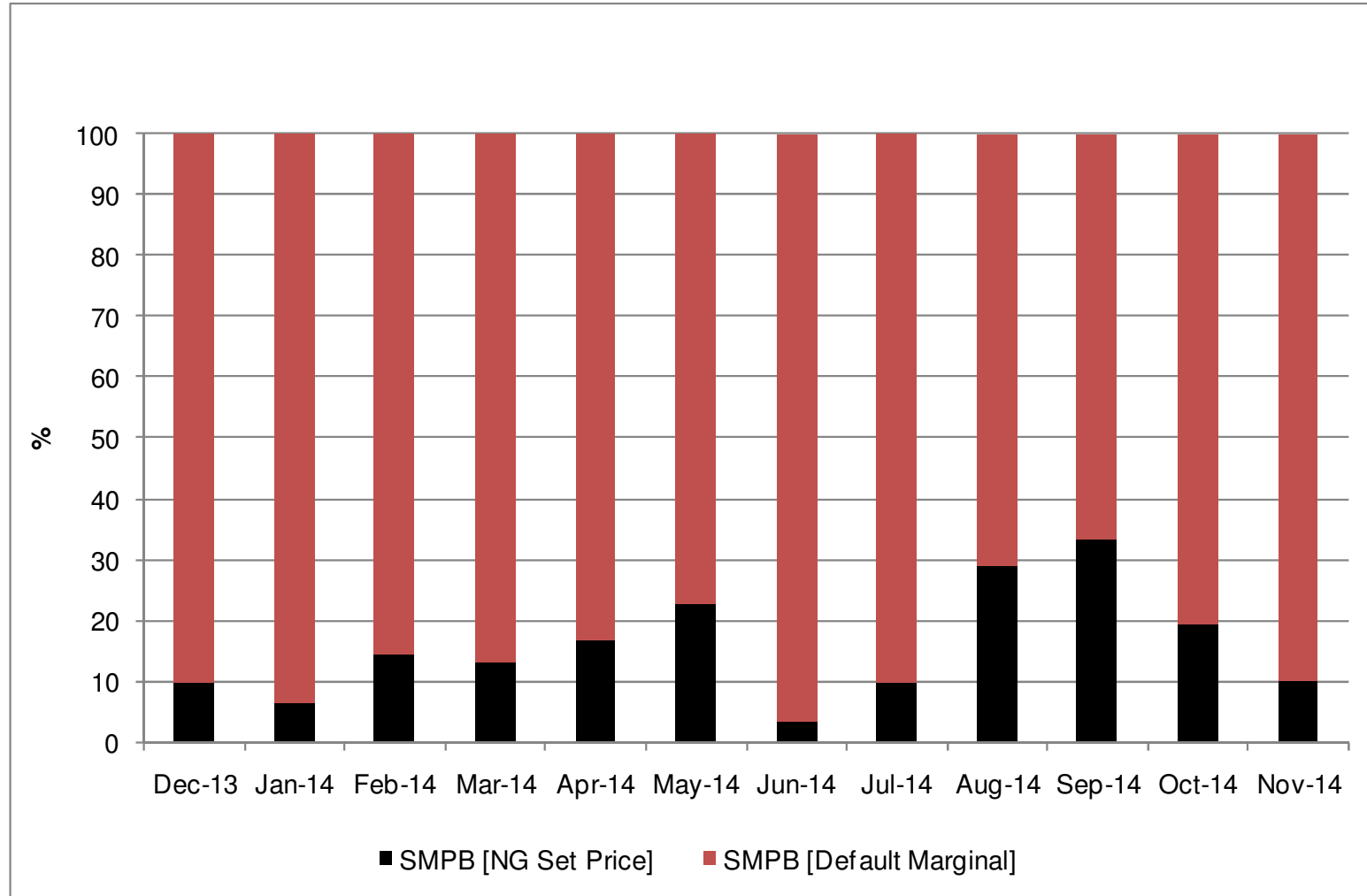
Transporter Energy Traded on the OCM nationalgrid

NGG Monthly Buys and Sells
Nov 2013 to Nov 2014 Vs Previous Year



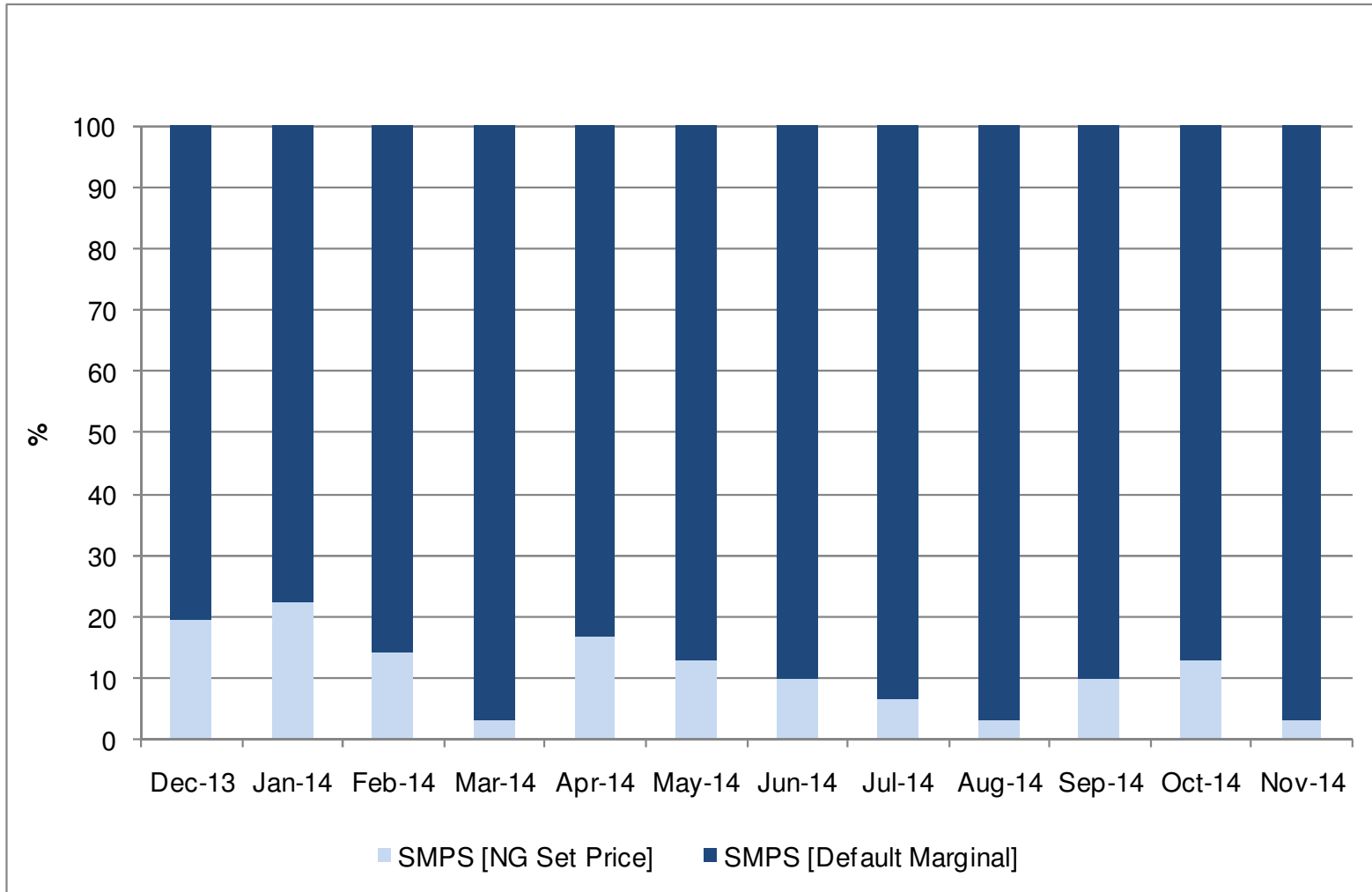
Days of Default SMP Prices [SMPB]

From Dec 2013 to Nov 2014



Days of Default SMP Prices [SMPS]

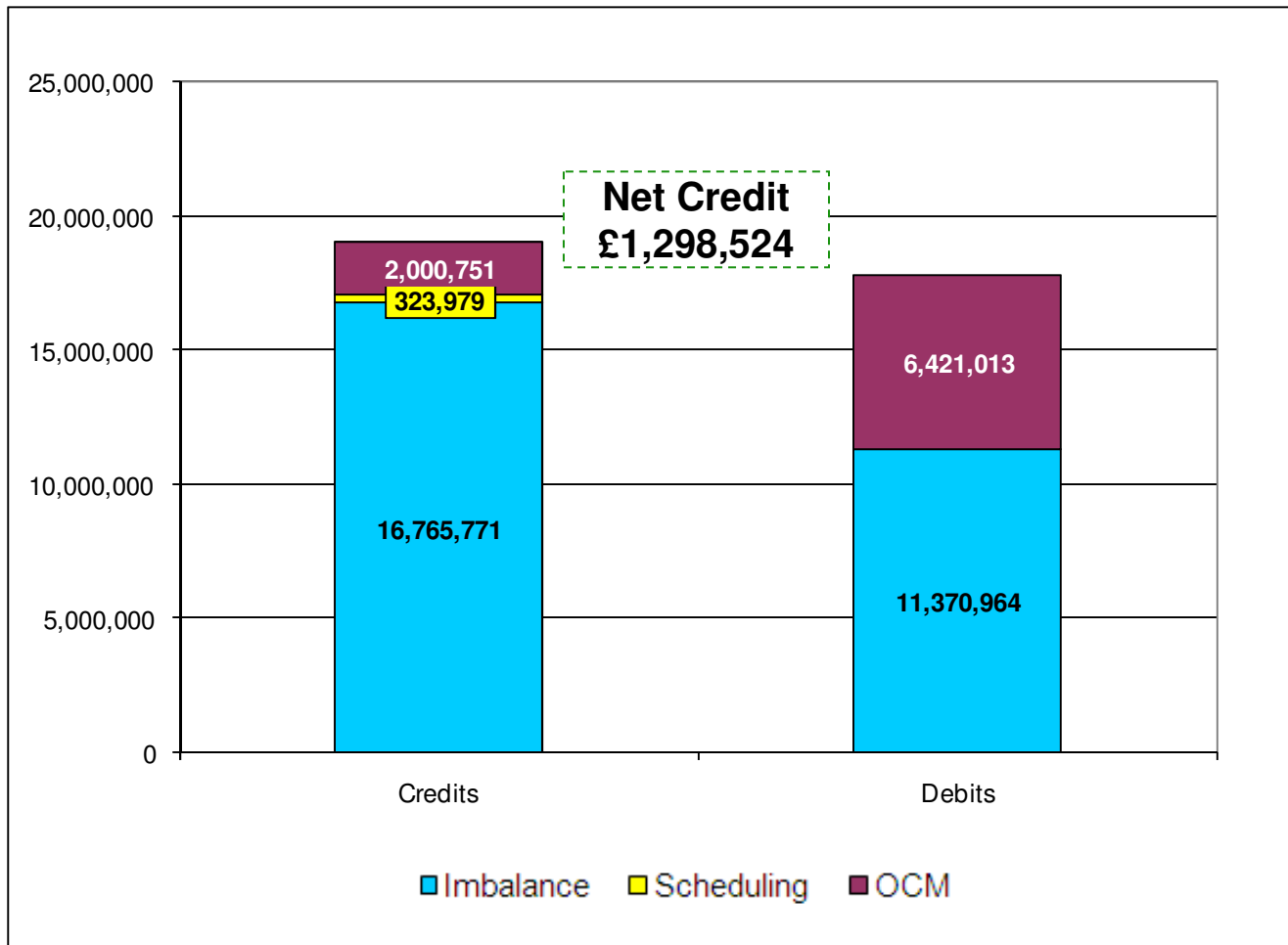
From Dec 2013 to Nov 2014



Energy Balancing – Balancing Costs

Payments / Charges / Net Credit / Debit [Imbalance / Scheduling / OCM]

Oct 2014



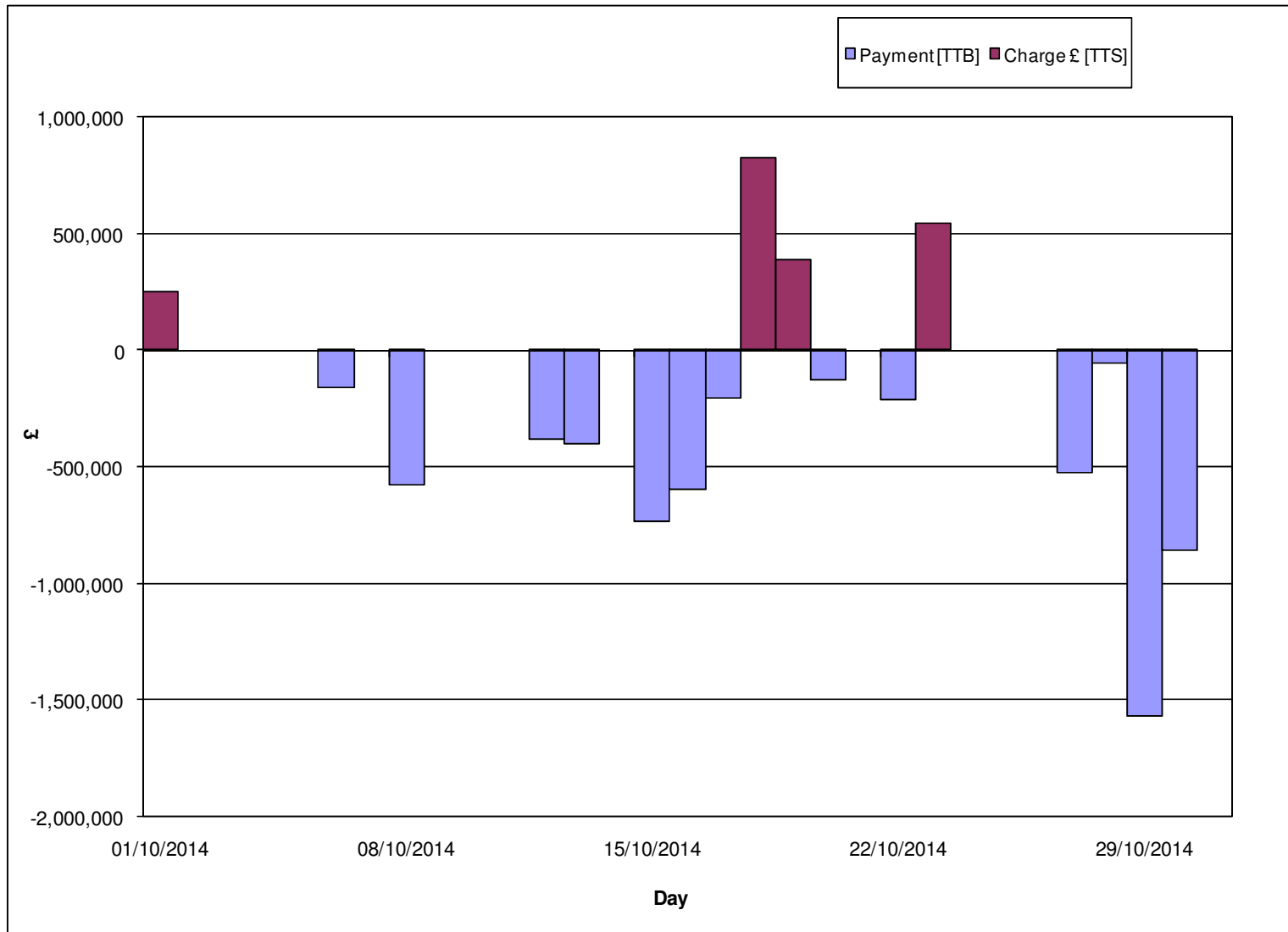
Energy Balancing – Balancing Costs

Oct 2014

		Oct-14
Imbalance	Payment £ [DCS]	-11,370,964
	Charge £ [DCT]	16,765,771
Scheduling	Exit Charge £ [DXS]	8,770
	Exit Charge £ [EXS]	80,635
	Entry Charge £ [ESC]	234,574
OCM	Payment £ [TTB]	-6,421,013
	Charge £ [TTS]	2,000,751
Balancing Costs		1,298,524

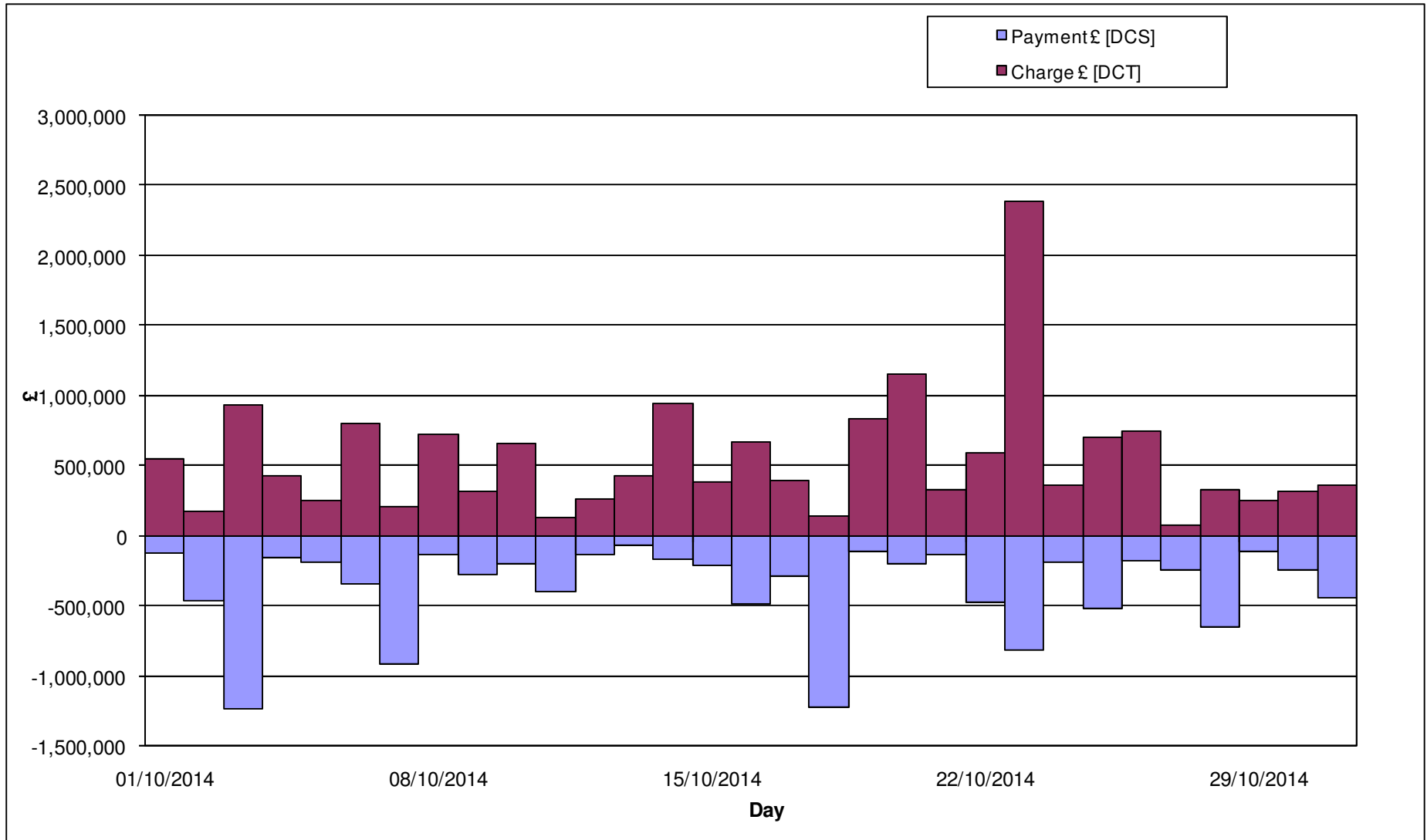
Energy Balancing – Balancing Costs

OCM Payments / Charges
Oct 2014



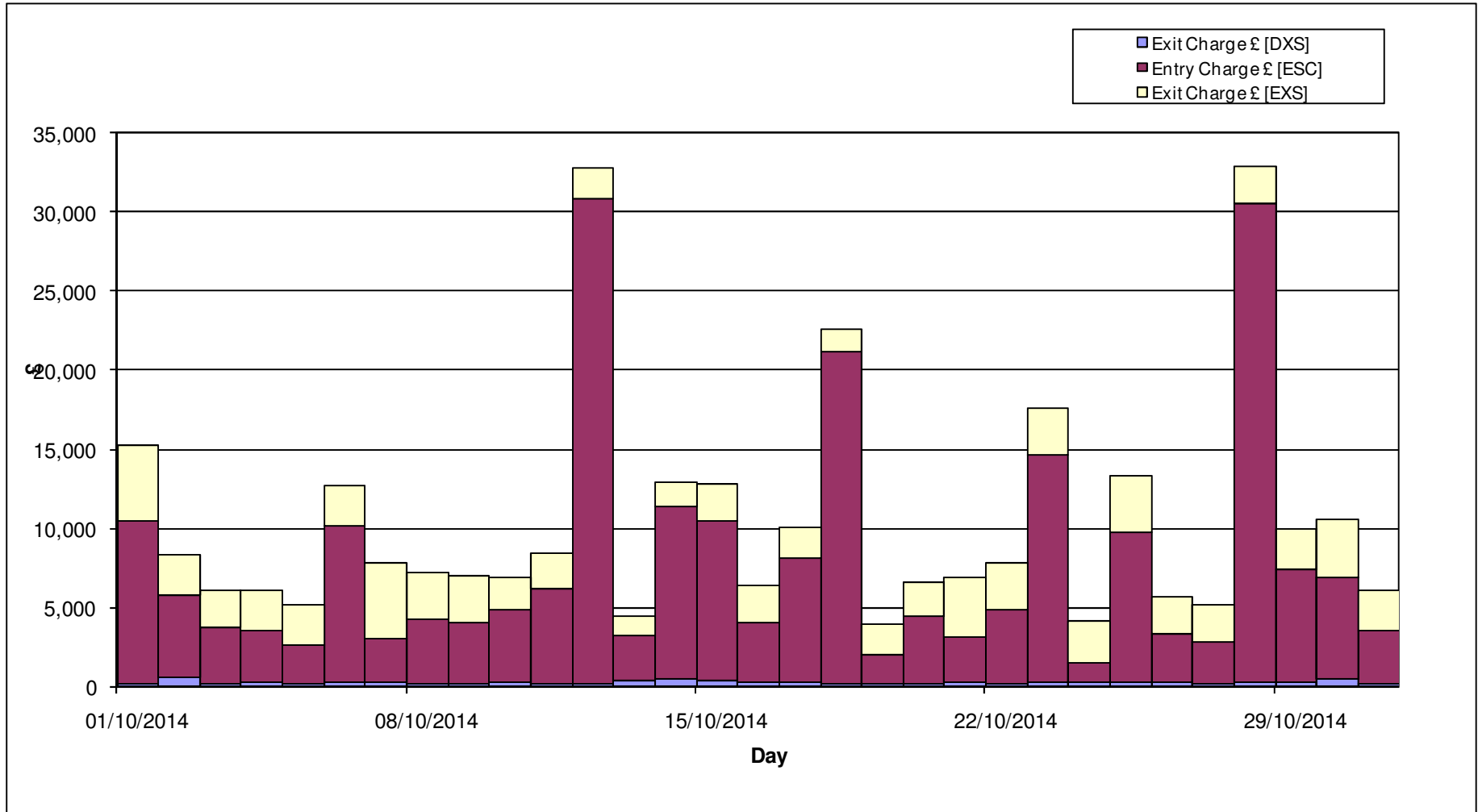
Energy Balancing – Balancing Costs

Imbalance Payments / Charges
Oct 2014



Energy Balancing – Balancing Costs

Scheduling Charges
Oct 2014



Capacity Neutrality

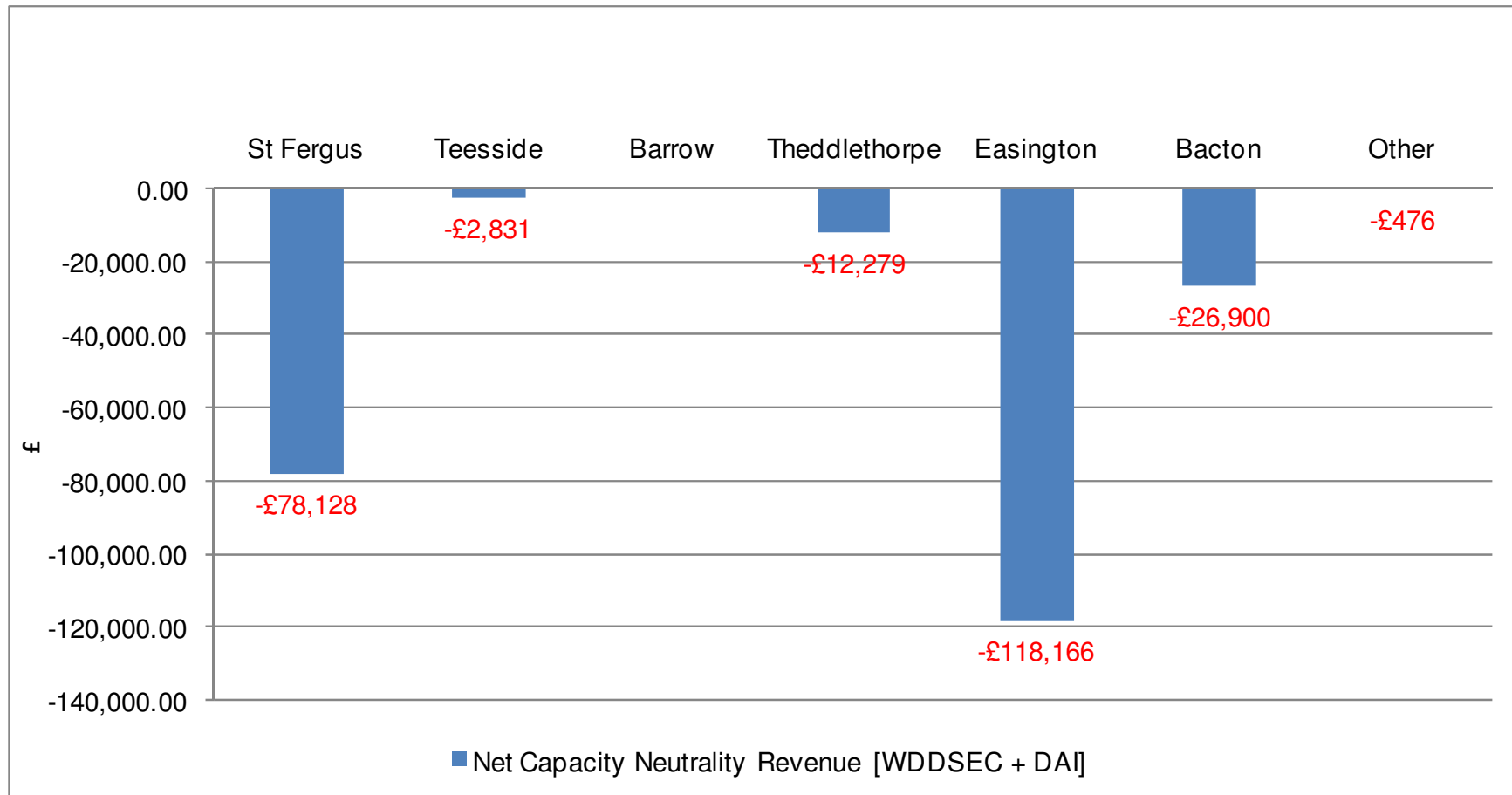
Net Cost / Revenue From 1st April 2014 to 30th November 2014

	Revenue/Costs
WDDSEC/DAI Entry Capacity Revenue	-£238,780
Total Entry Constraint Management Operational Costs	£0
Entry Capacity Overrun Revenue	-£208,376
Non-Obligated Sales Revenue (Entry only)	-£31,730
Revenue from Locational Sells and PRI Charges	£0
Net Revenue	-£478,886

Net Capacity Neutrality Revenue

[Daily Obligated Entry Capacity and Interruptible Entry Capacity: WDDSEC + DAI]

From 1st April 2014 to 30th November 2014



Capacity Neutrality

Revenues from Entry Cap Overruns and Non-Obligated Sales,
and Locational Sells and PRI Charges.

Totals From 1st April 2014 to 31st March 2015



Month	Entry Cap Overrun Revenue	Non-obligated sales revenue (entry)
Apr-14	-£5,048	-£253
May-14	-£8,271	-£108
Jun-14	-£23,853	-
Jul-14	-£34,442	-
Aug-14	-£65,036	-
Sep-14	-£53,269	-£44
Oct-14	-£18,457	-£15,919
Nov-14	Not yet available	-£15,407
Dec-14	-	-
Jan-15	-	-
Feb-15	-	-
Mar-15	-	-
Total	-£208,376 (FY14-15)	-£31,730(FY14-15)

Month	Locational Sells and PRI charges revenue
Apr-14	£0
May-14	£0
Jun-14	£0
Jul-14	£0
Aug-14	£0
Sep-14	£0
Oct-14	£0
Nov-14	£0
Dec-14	£0
Jan-15	£0
Feb-15	£0
Mar-15	£0
Total	£0 (FY14/15)