

---

# System Management Principles Statement



- Compliance report for September 2014 and October 2014
- Summary of balancing actions and breaches for September 2014 – October 2014
- Performance compared to last year

## Summary Report

---

	Sep-14	Oct-14
Total Number of Buy Actions	27	21
Total Number of Sell Actions	12	8
Total	39	29

	Sep-14	Oct-14
Number of Material Breaches	0	0
Number of Non-Material Breaches	0	0

	Oct-14	Oct-13
Number of Balancing Actions (Calendar year to date)	242	330
Number of Material Breaches (Calendar year to date)	0	0
Number of Non-Material Breaches (Calendar year to date)	0	0

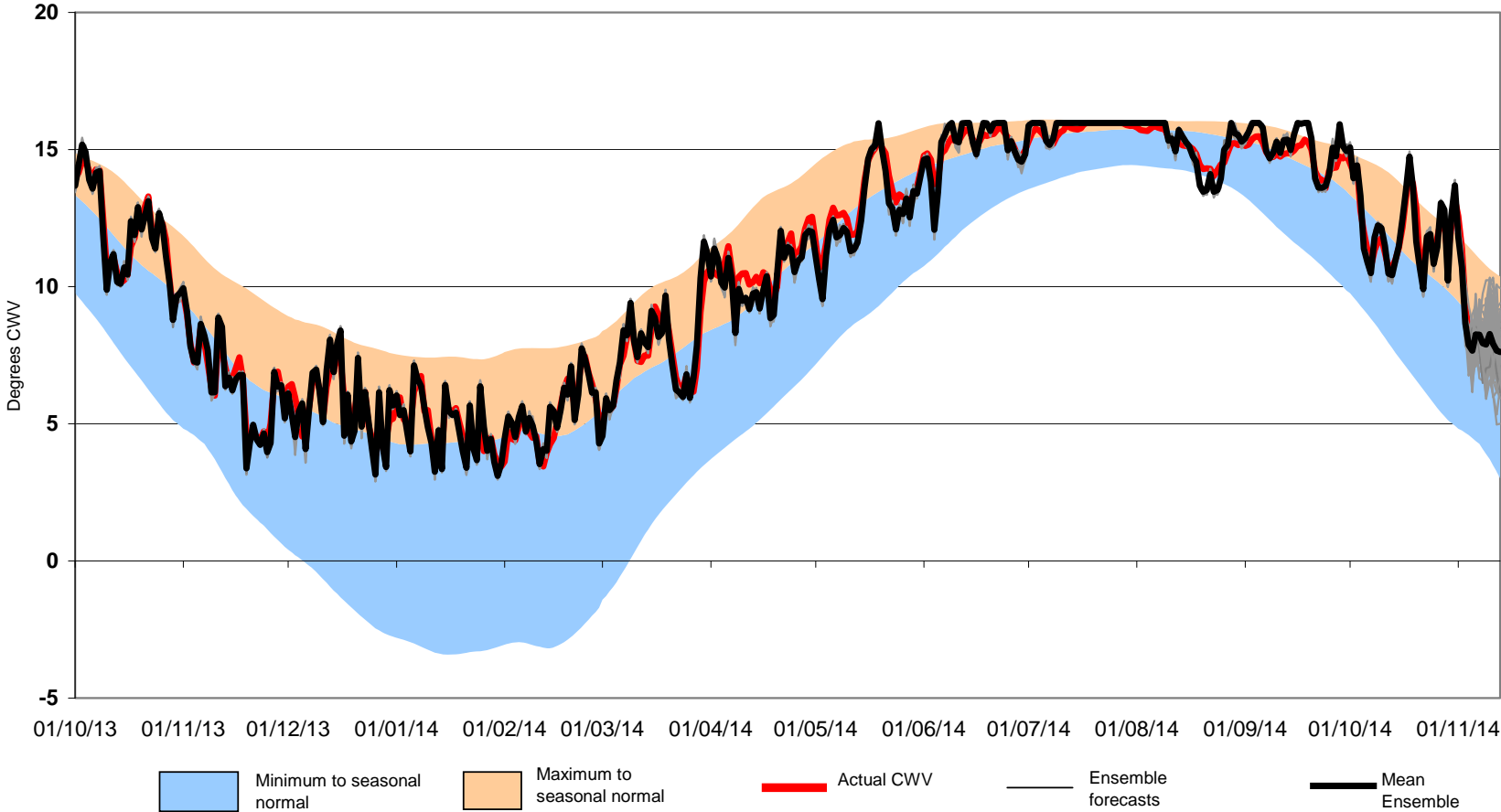
---

## Operational Overview



# Month-ahead ensemble CWV

October 2013 to November 2014 vs. Historical Range



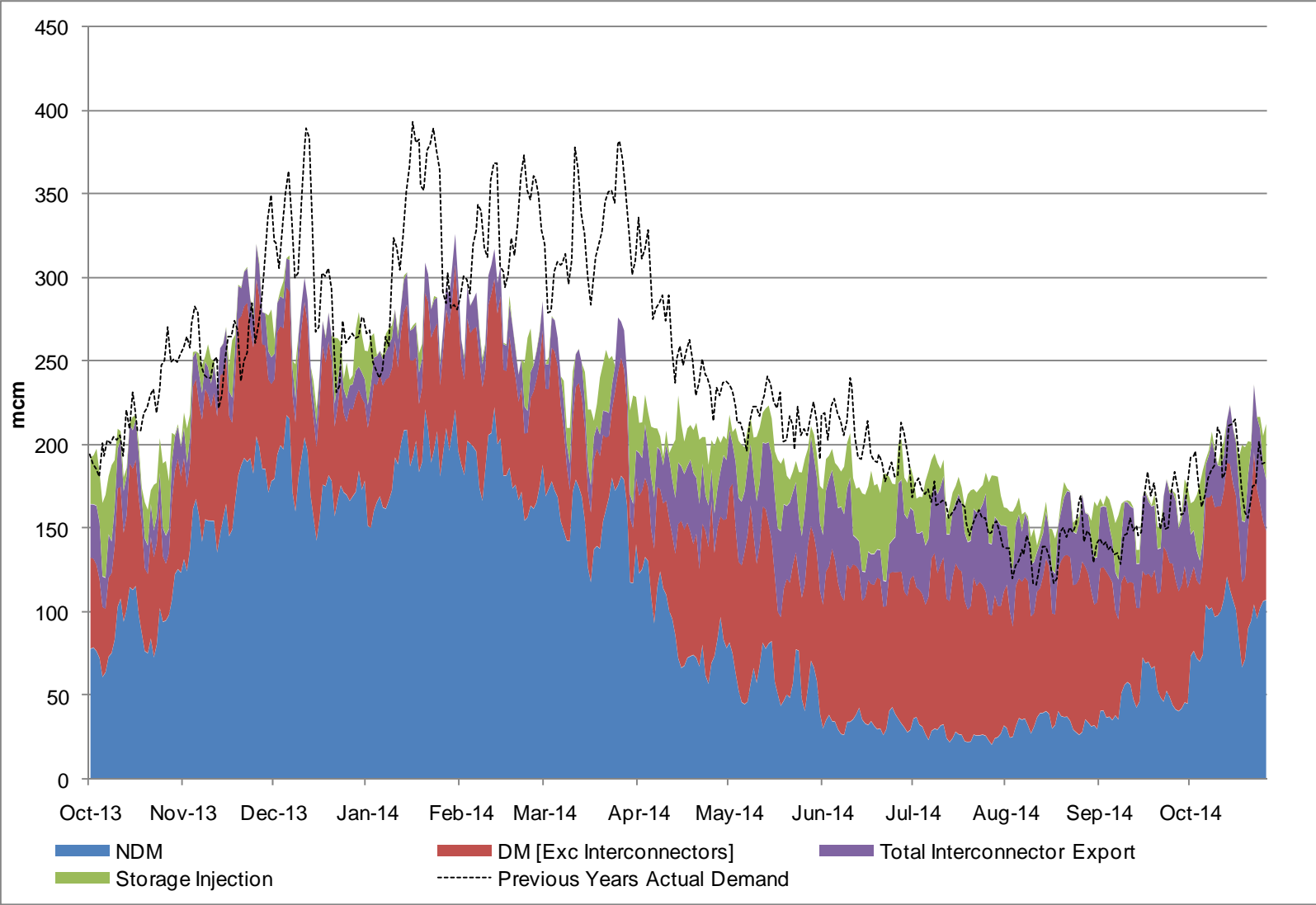
---

# Demands



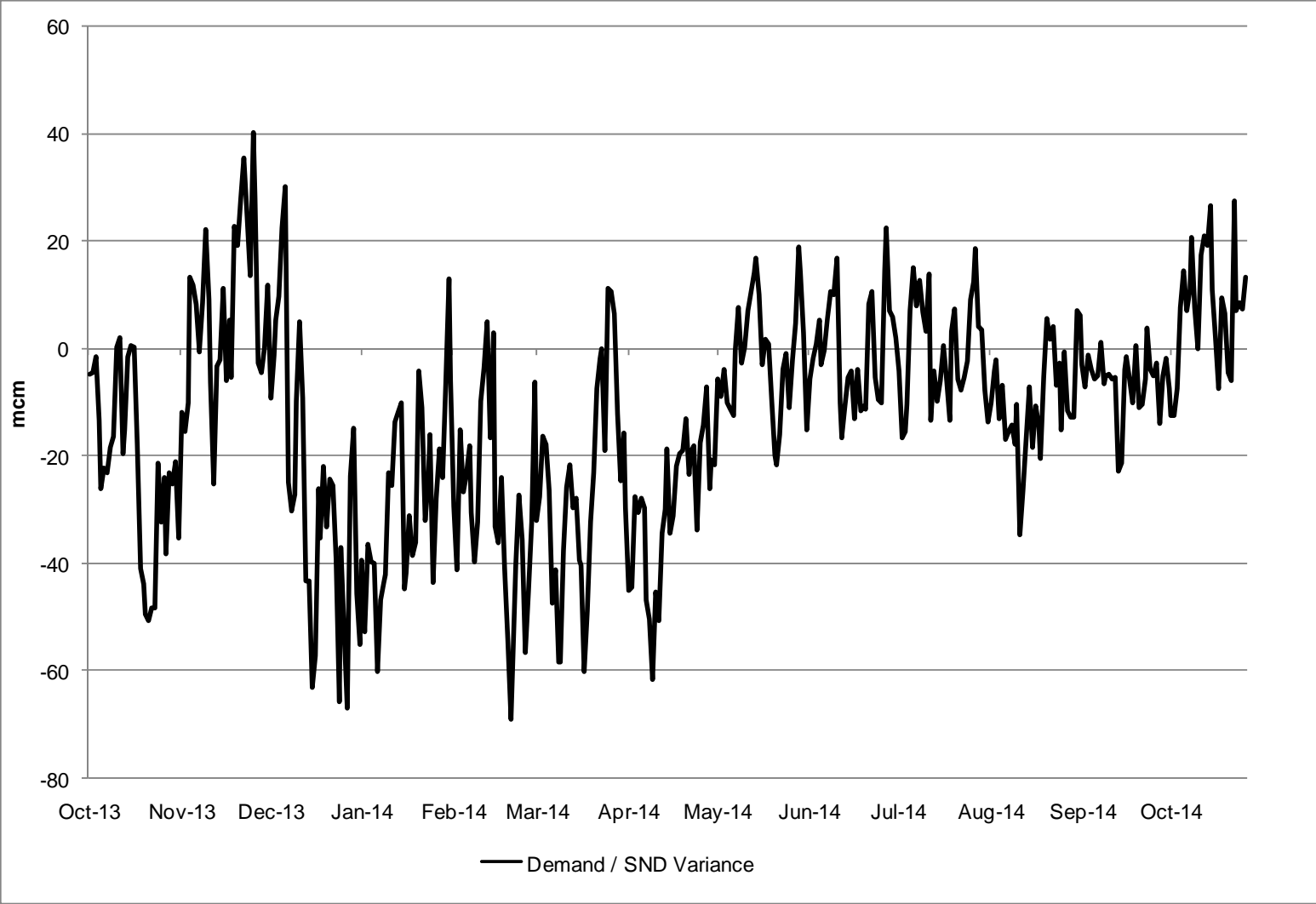
# Gas Demand Breakdown

1<sup>st</sup> October 2013 to 26<sup>th</sup> October 2014 Vs Previous Year



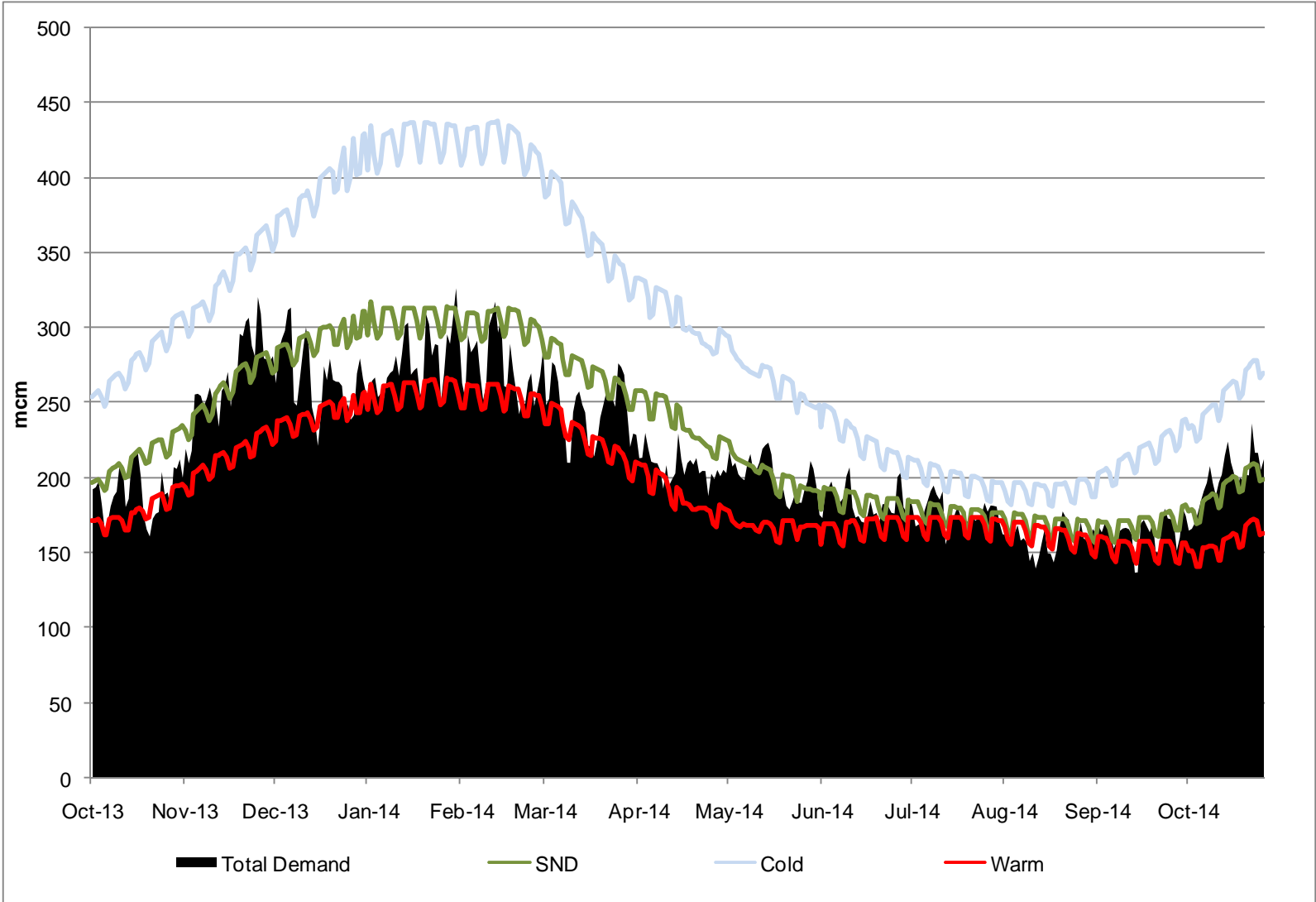
# Demand Variance from SND

1<sup>st</sup> October 2013 to 26<sup>th</sup> October 2014



# Gas Demand Vs SND / Cold / Warm

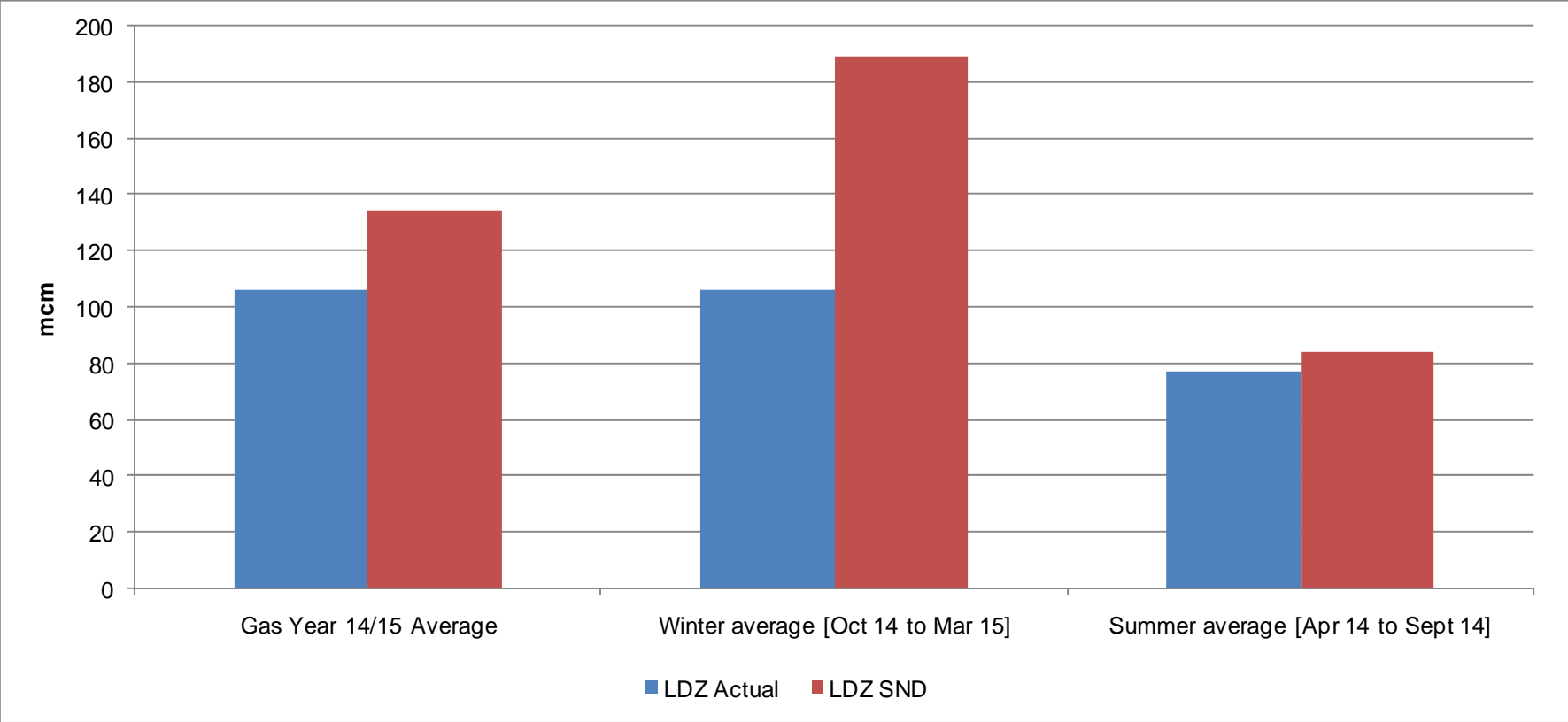
1<sup>st</sup> October 2013 to 26<sup>th</sup> October 2014





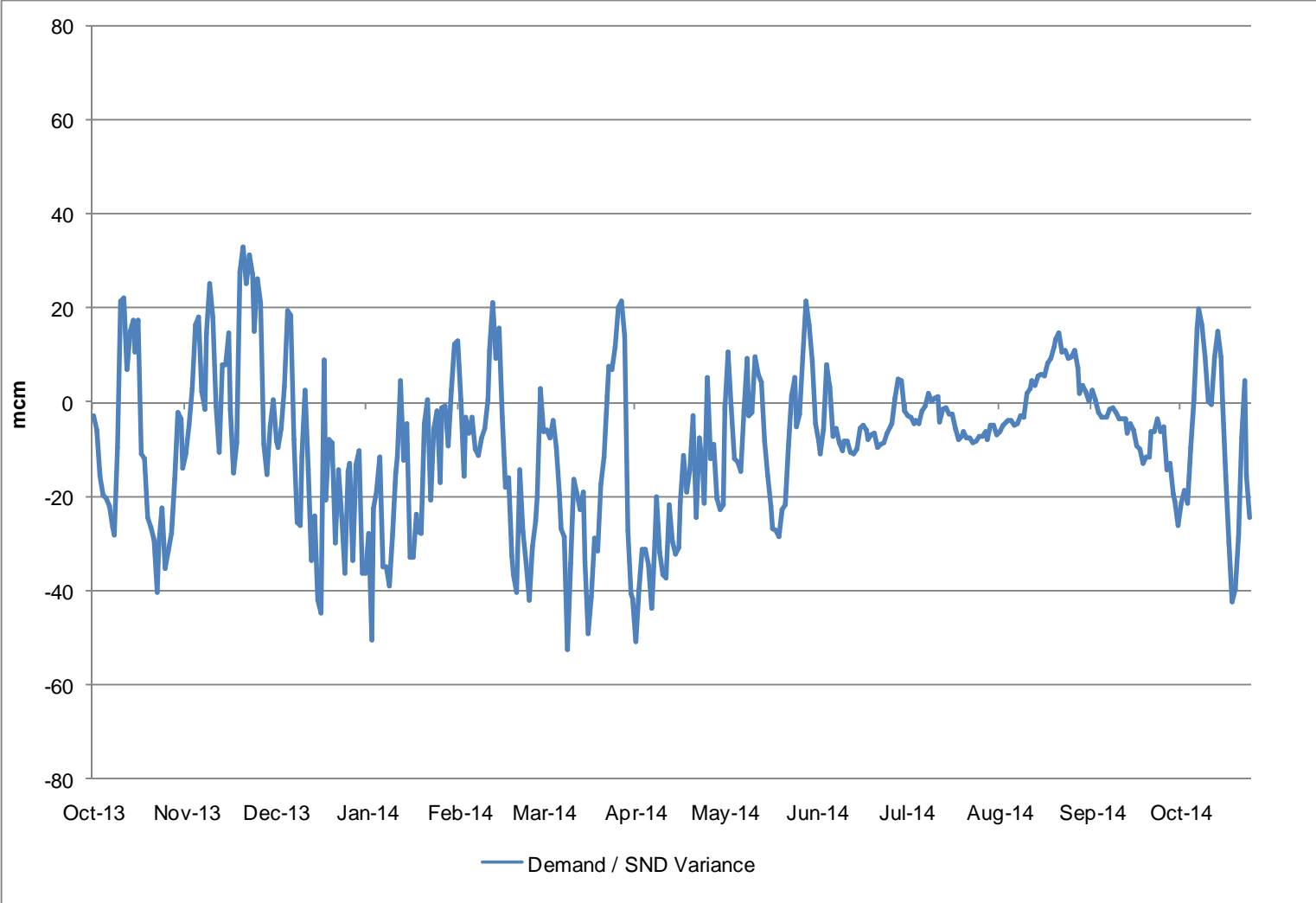
# LDZ Actual Demand Vs LDZ SND

1<sup>st</sup> October 2014 to 24<sup>th</sup> October 2014



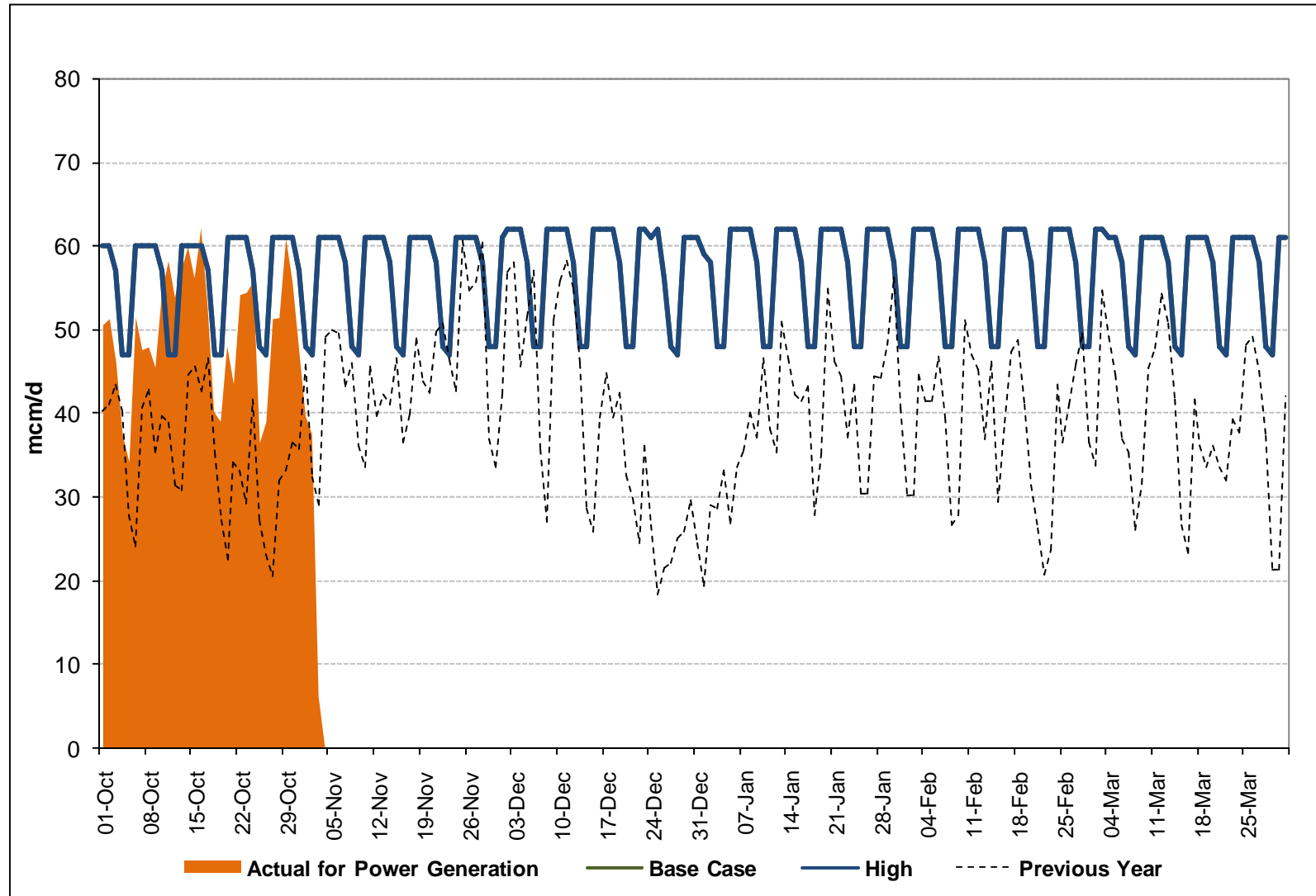
# LDZ Demand / LDZ SND Variance

1st October 2013 to 24th October 2014



# Gas Consumption for Power Generation

1<sup>st</sup> October 2014 to 3<sup>rd</sup> November 2014



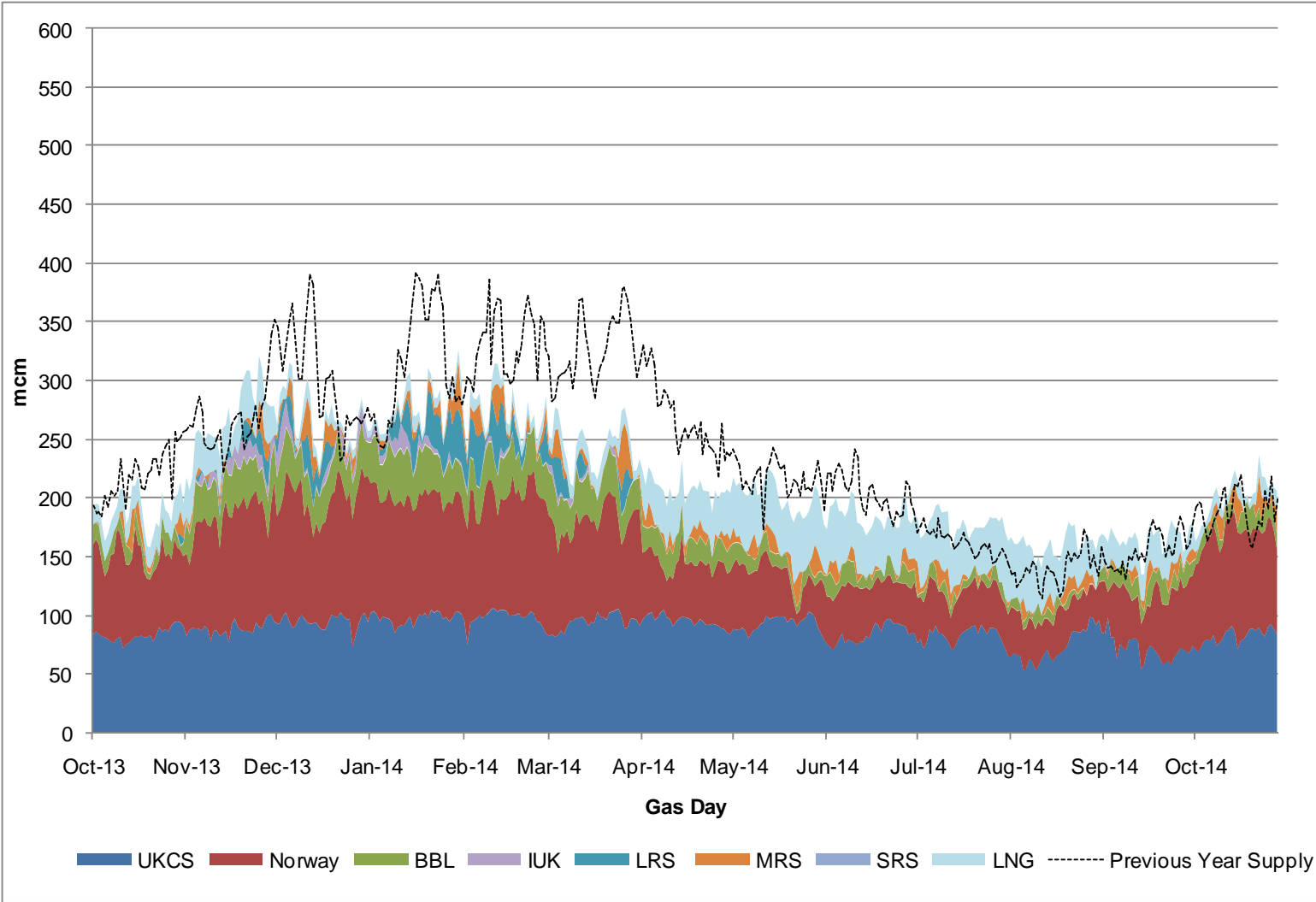
---

# Supplies



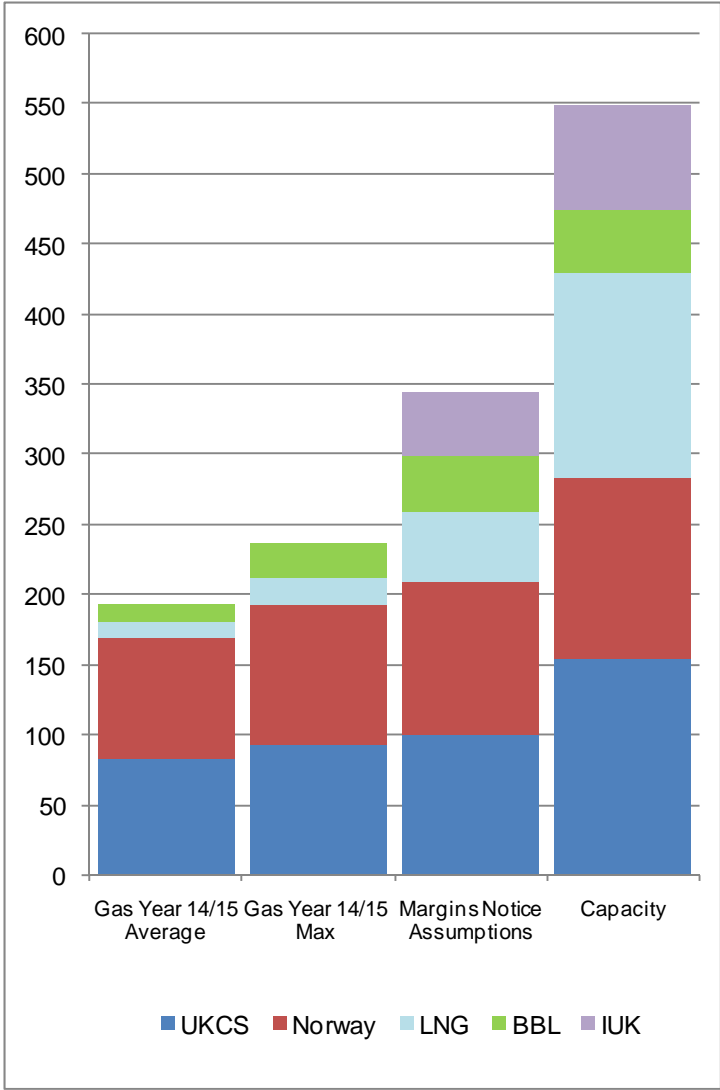
# Gas Supply Breakdown

1<sup>st</sup> October 2013 to 28<sup>th</sup> October 2014 vs Previous Year



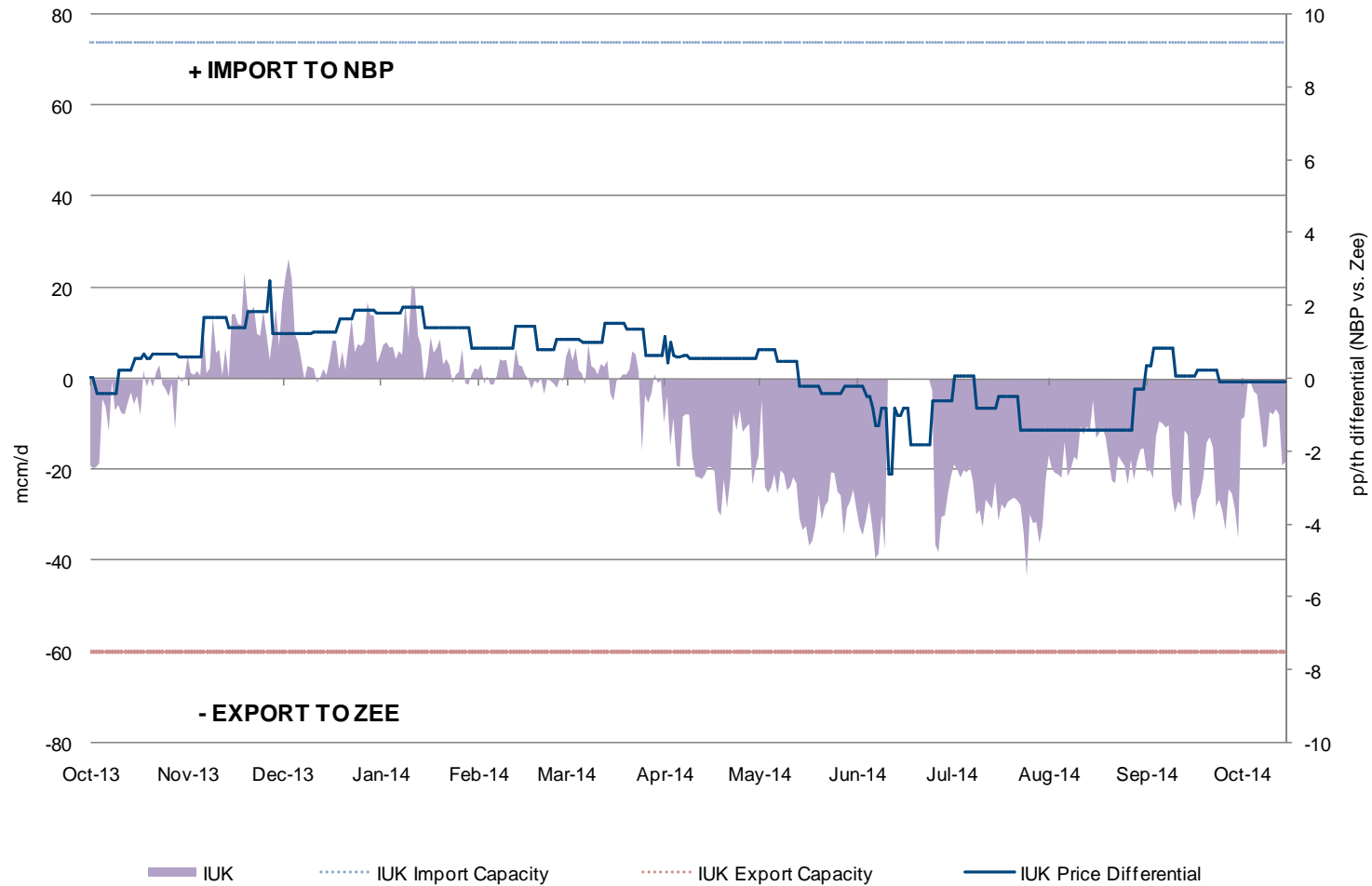
# NSS [Non-Storage Supply]

1<sup>st</sup> October 2014 to 28<sup>th</sup> October 2014



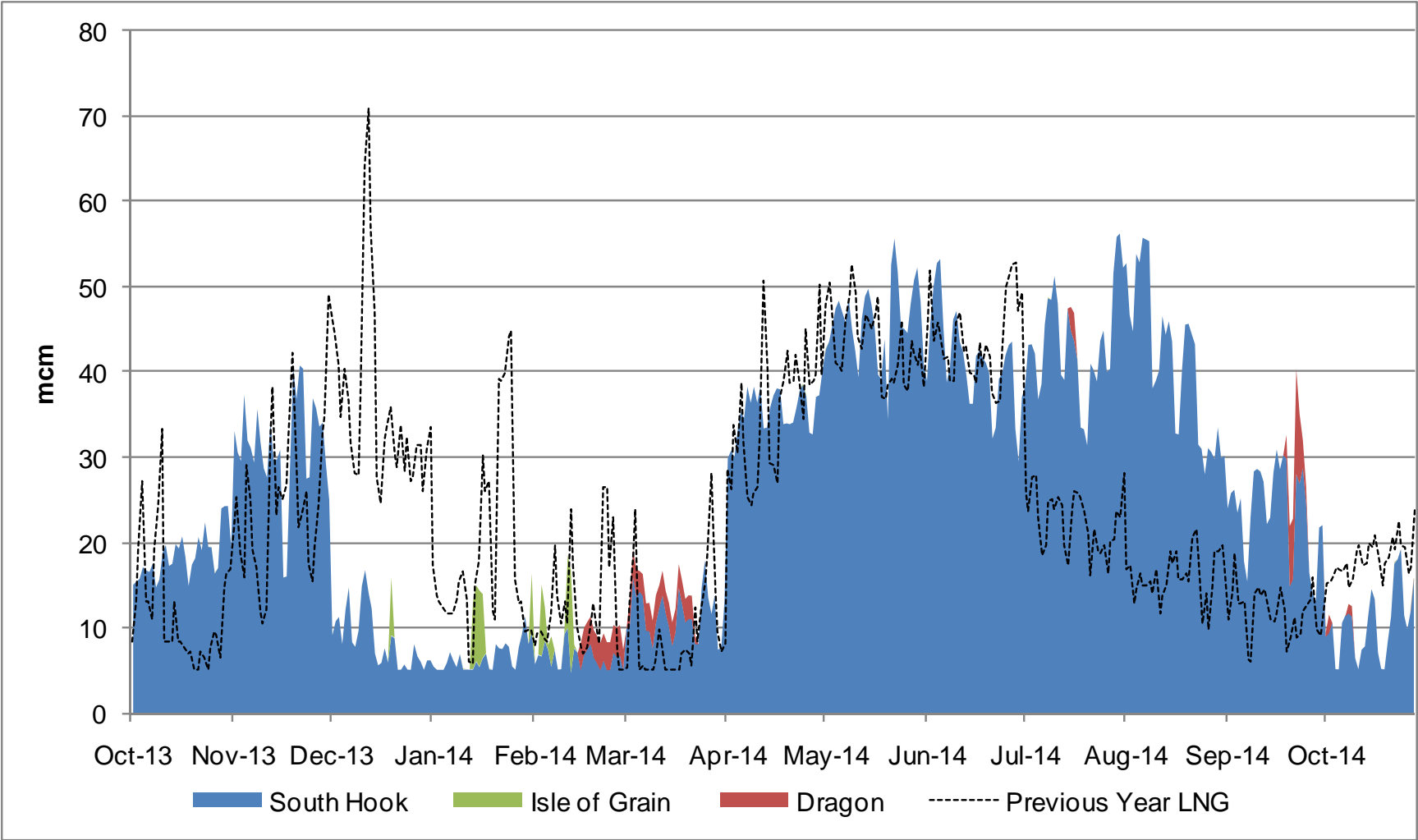
# IUK Flows Vs NBP & ZEE Price Differential

1<sup>st</sup> October 2013 to 15<sup>th</sup> October 2014



# LNG Terminal Flows

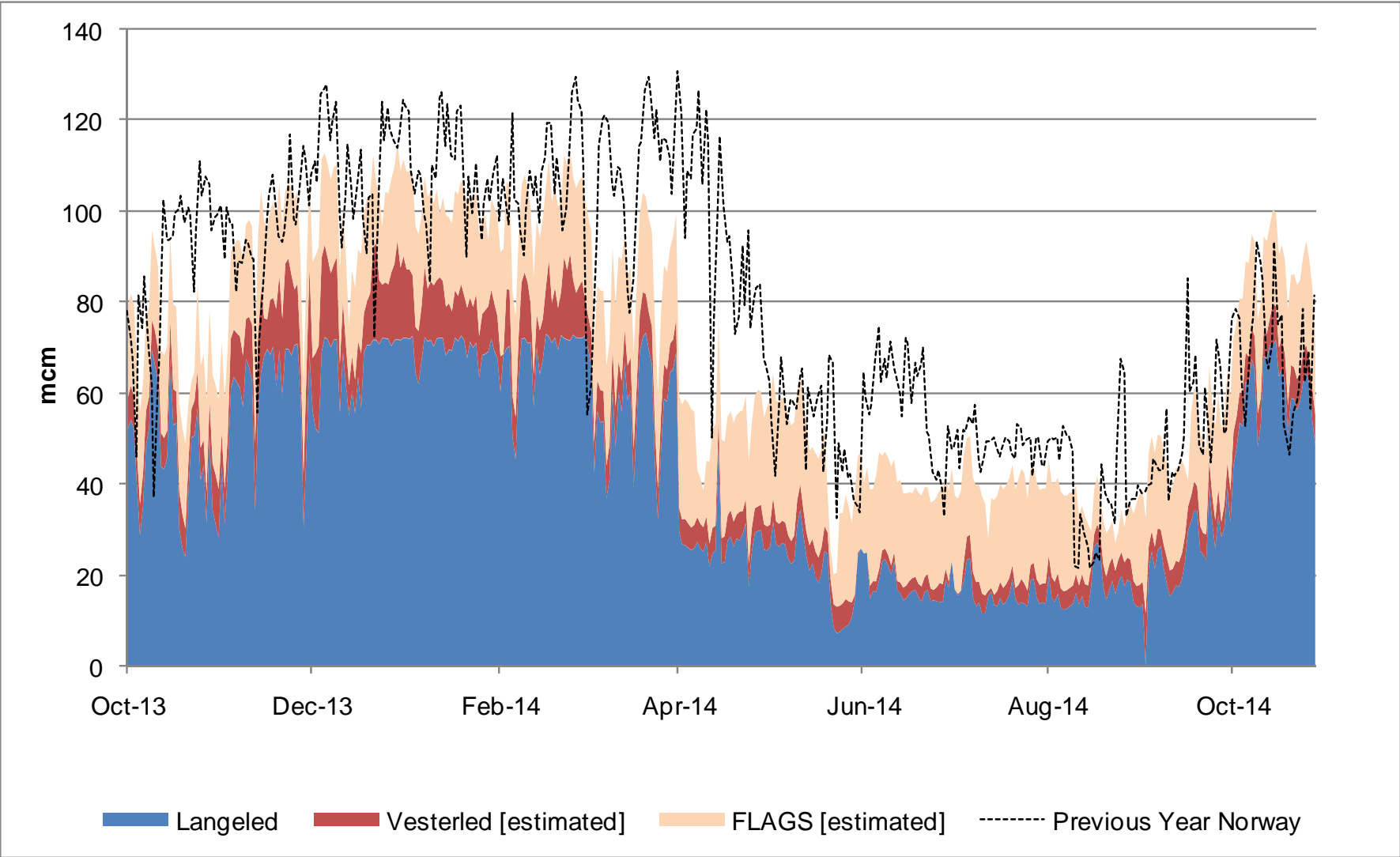
1st October 2013 to 28th October 2014





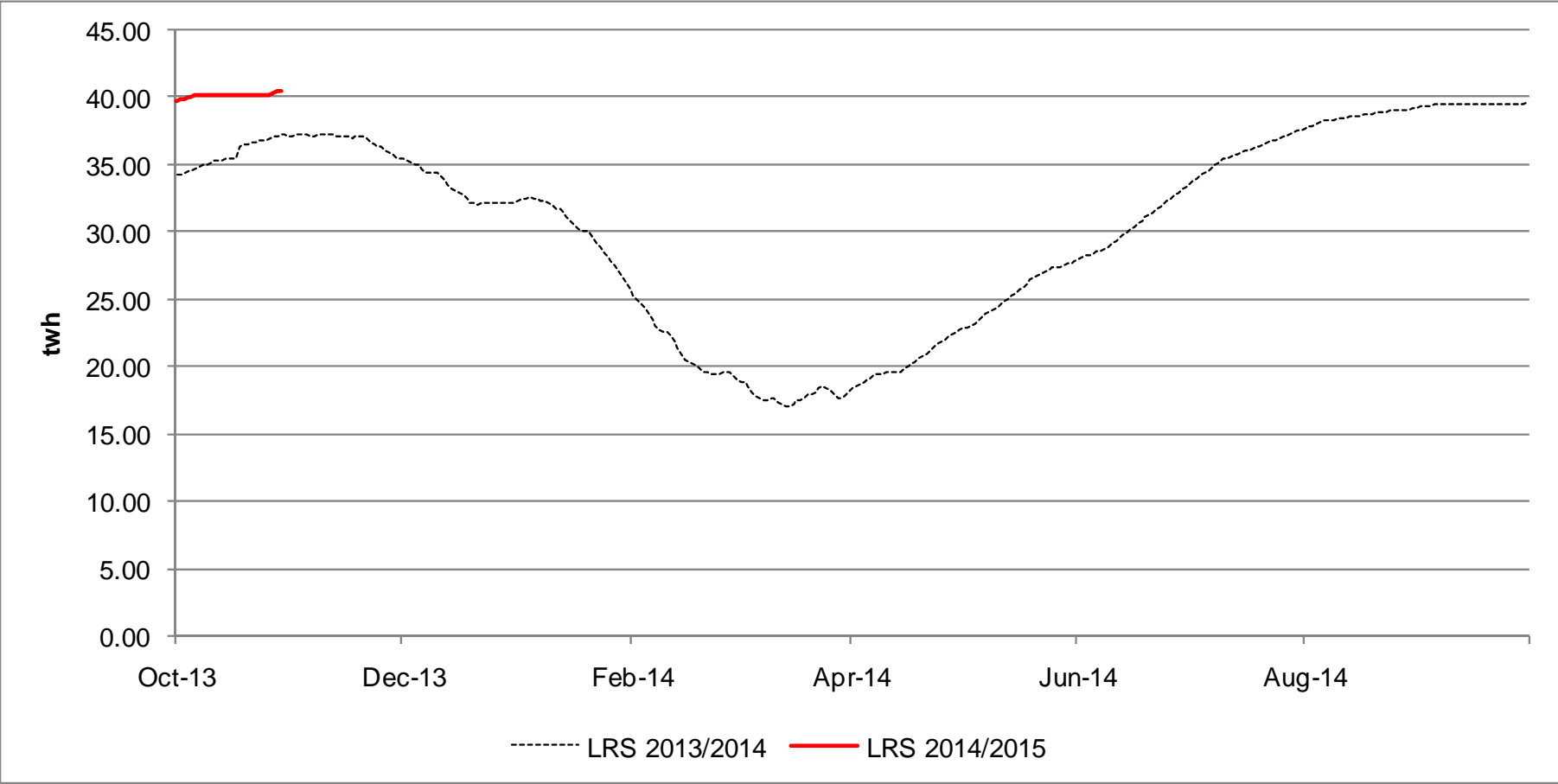
# Norway Flows

1<sup>st</sup> October 2013 to 28<sup>th</sup> October 2014



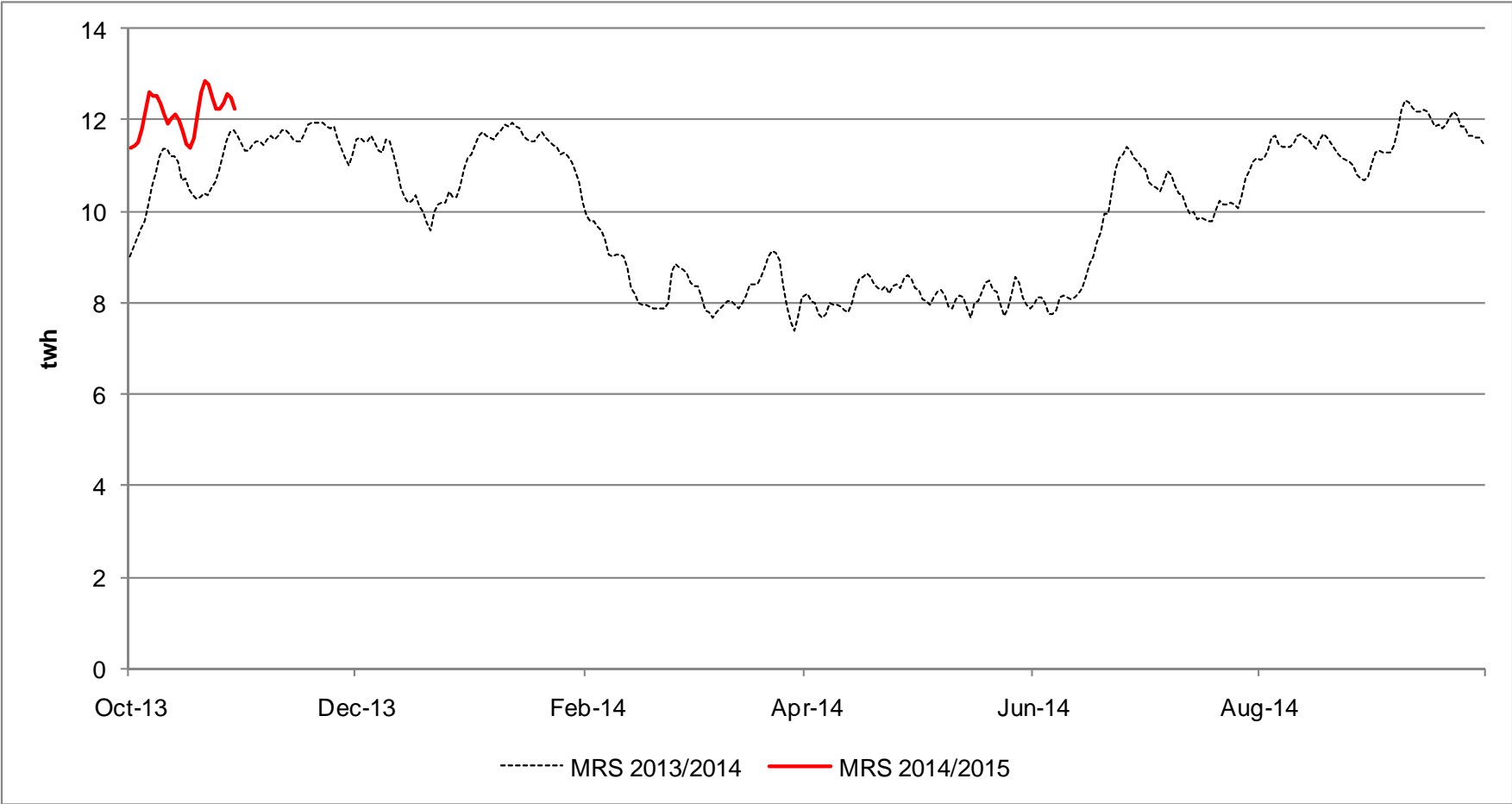
# Long Range Storage Stocks [LRS]

1<sup>st</sup> Oct 2014 to 29<sup>th</sup> October 2014 Vs Previous Years



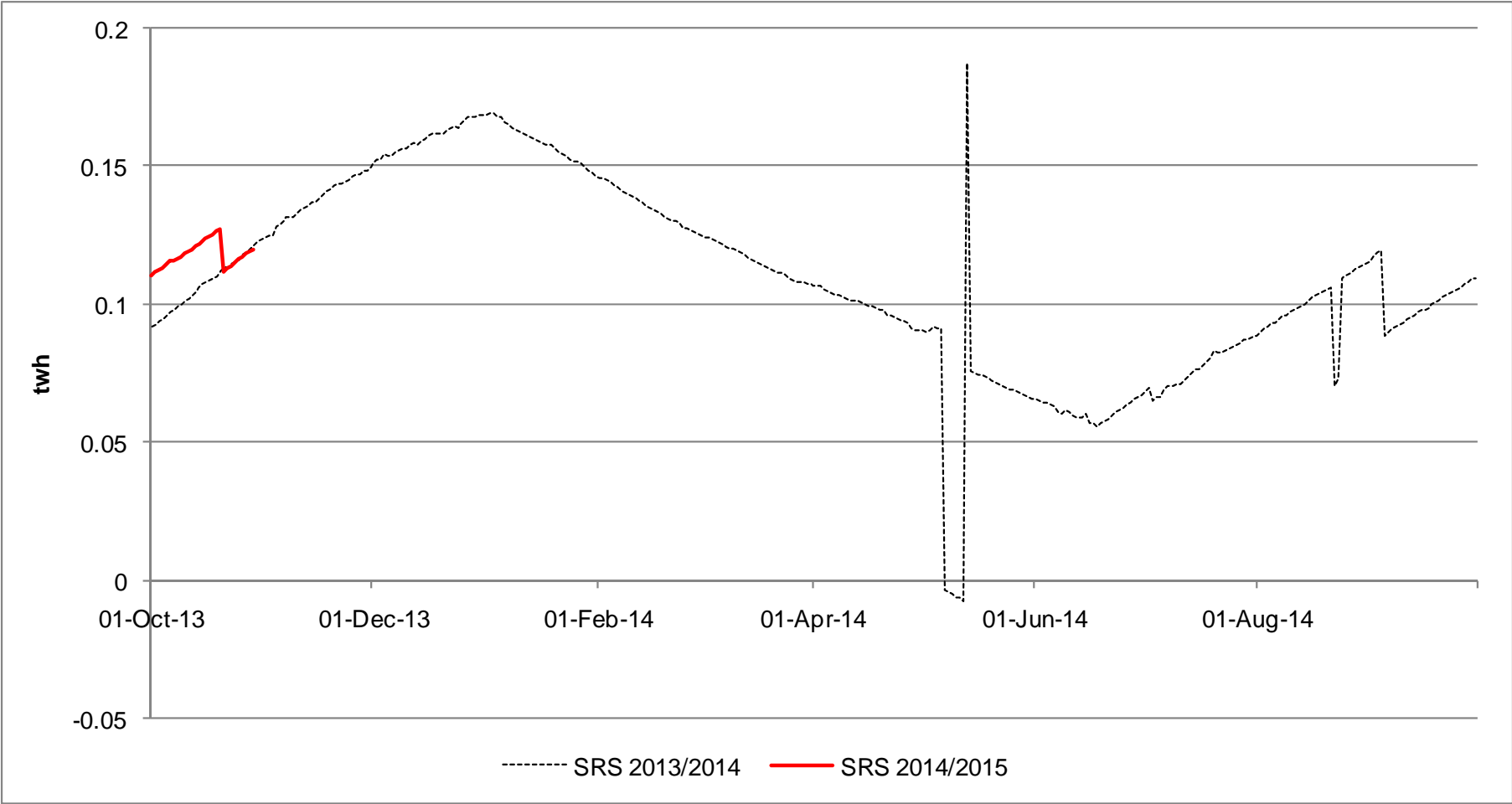
# Medium Range Storage Stocks [MRS]

1<sup>st</sup> Oct 2014 to 29<sup>th</sup> October 2014 Vs Previous Years



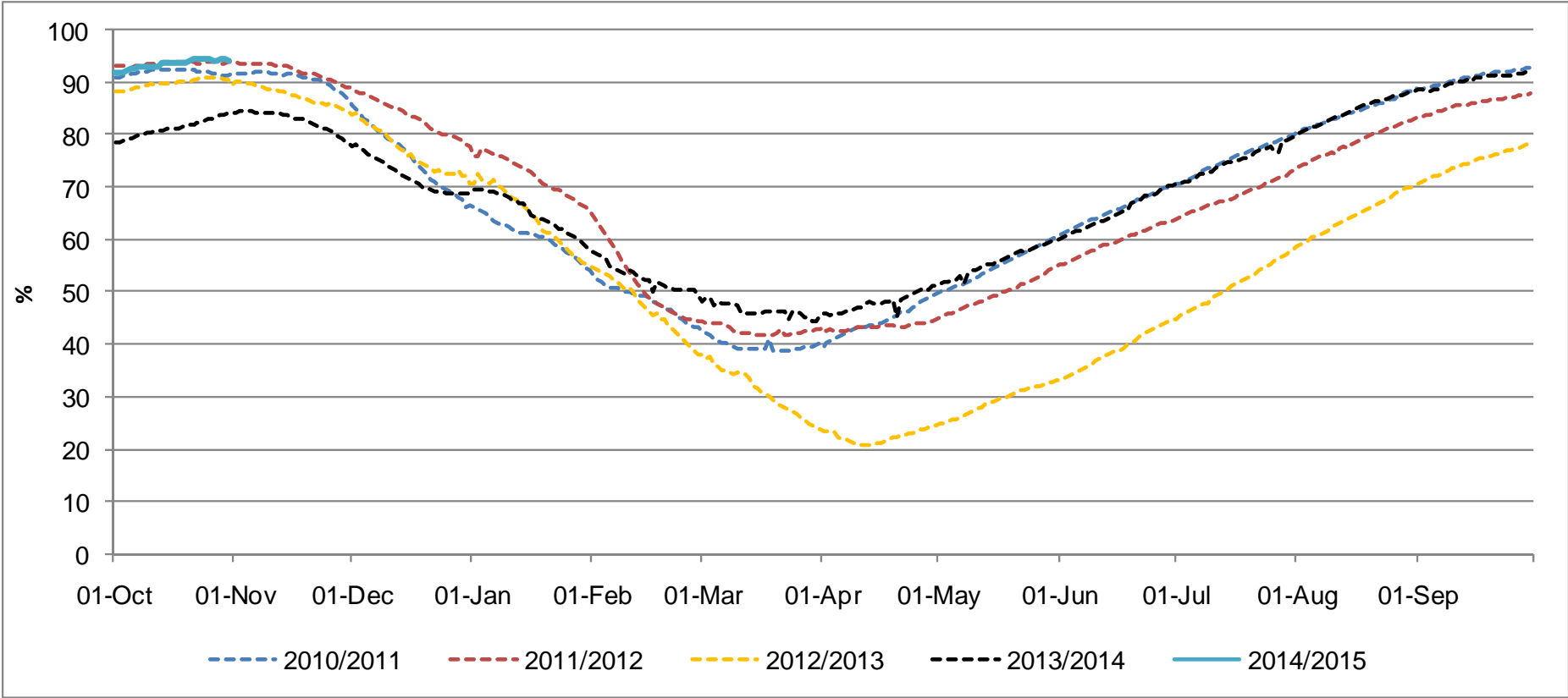
# Short Range Storage Stocks [SRS]

1<sup>st</sup> Oct 2014 to 29<sup>th</sup> Oct 2014 Vs Previous Years



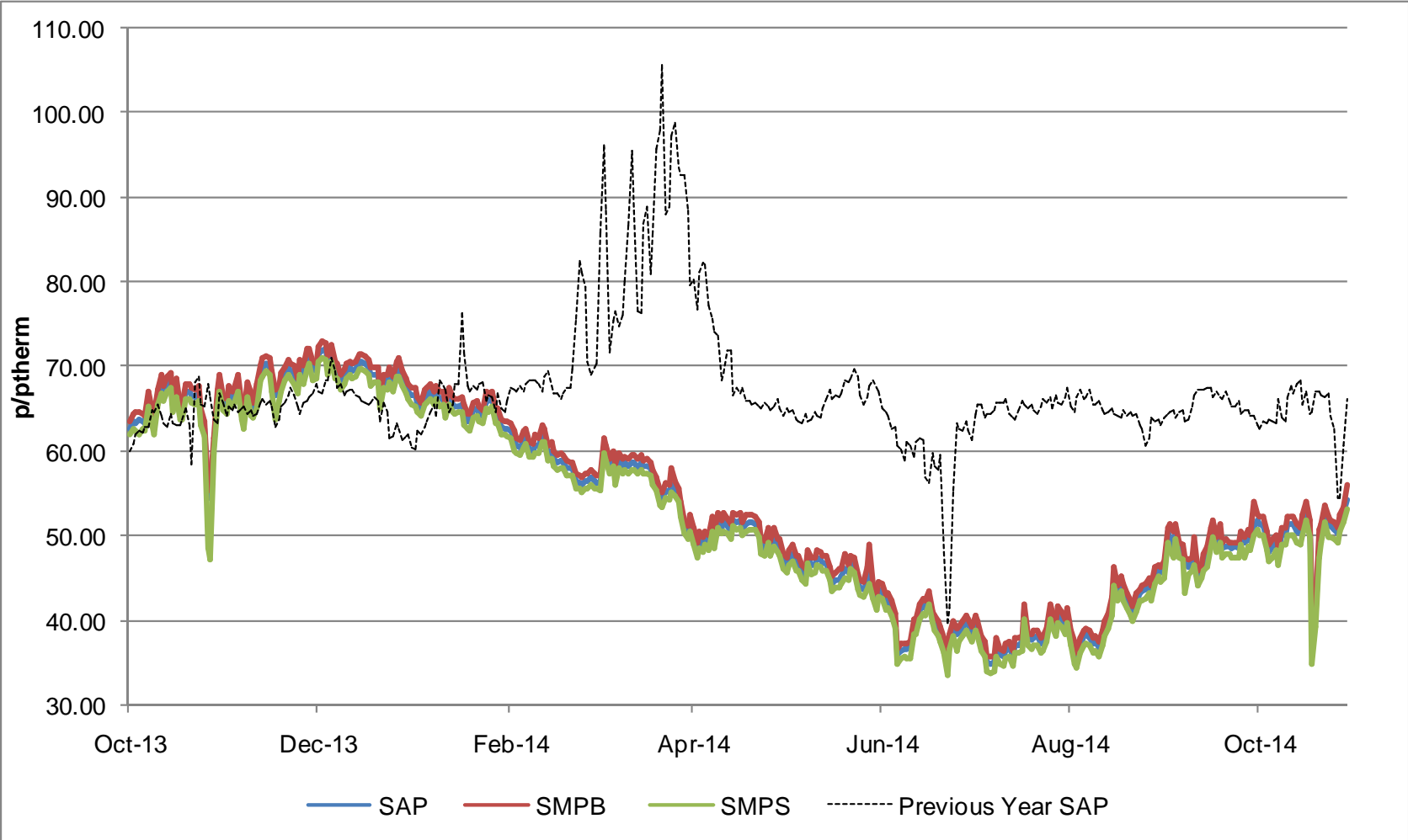
# Combined EU Storage Stocks [% Full]

From 1<sup>st</sup> Oct 2014 to 30<sup>th</sup> Oct 2014 Vs Previous Years



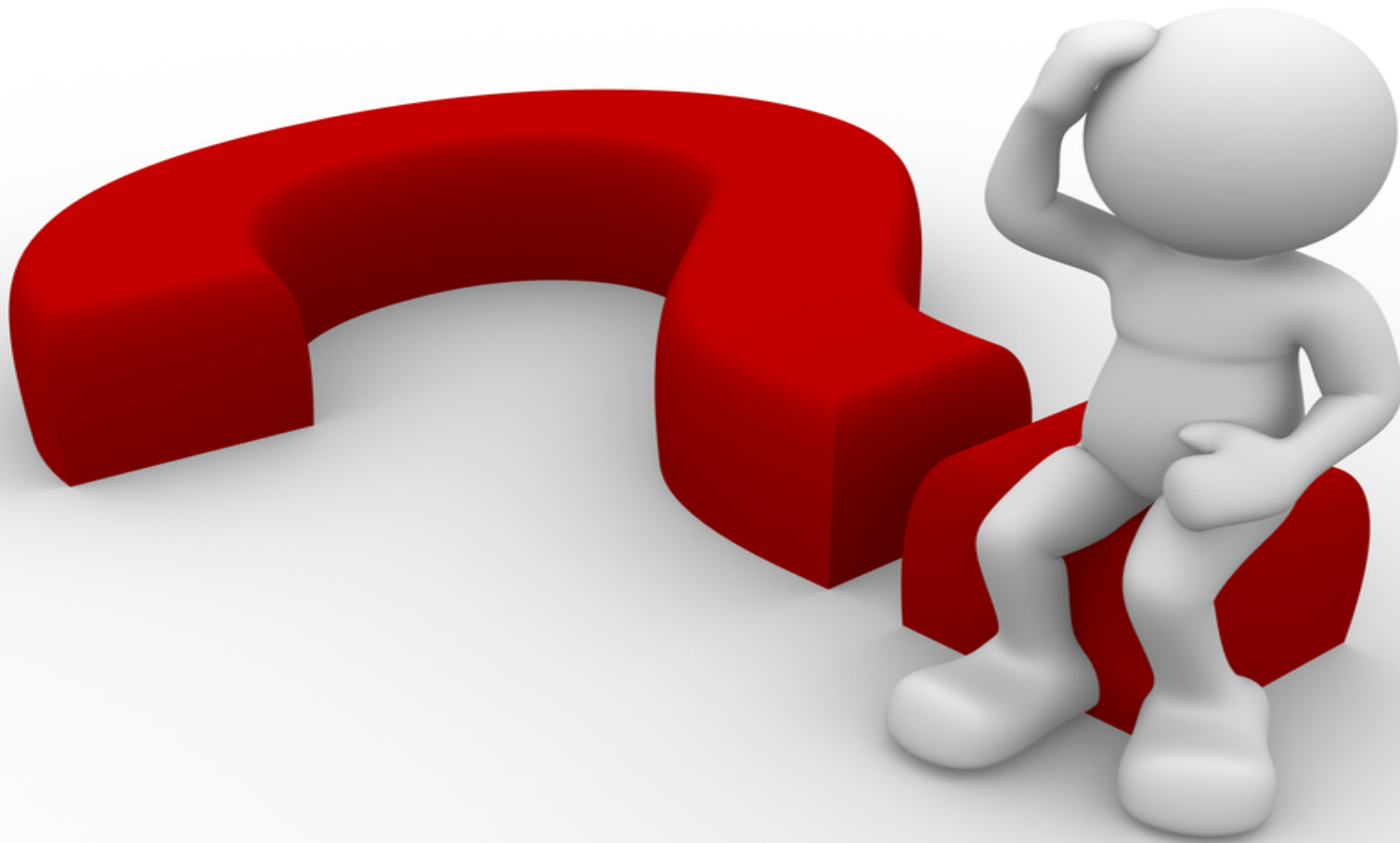
# UK Gas Prices

1<sup>st</sup> Oct 2013 to 29<sup>th</sup> Oct 2014 Vs Previous Years



## What Operational Issues Affected Users?

---



# Transporter Actions and Neutrality



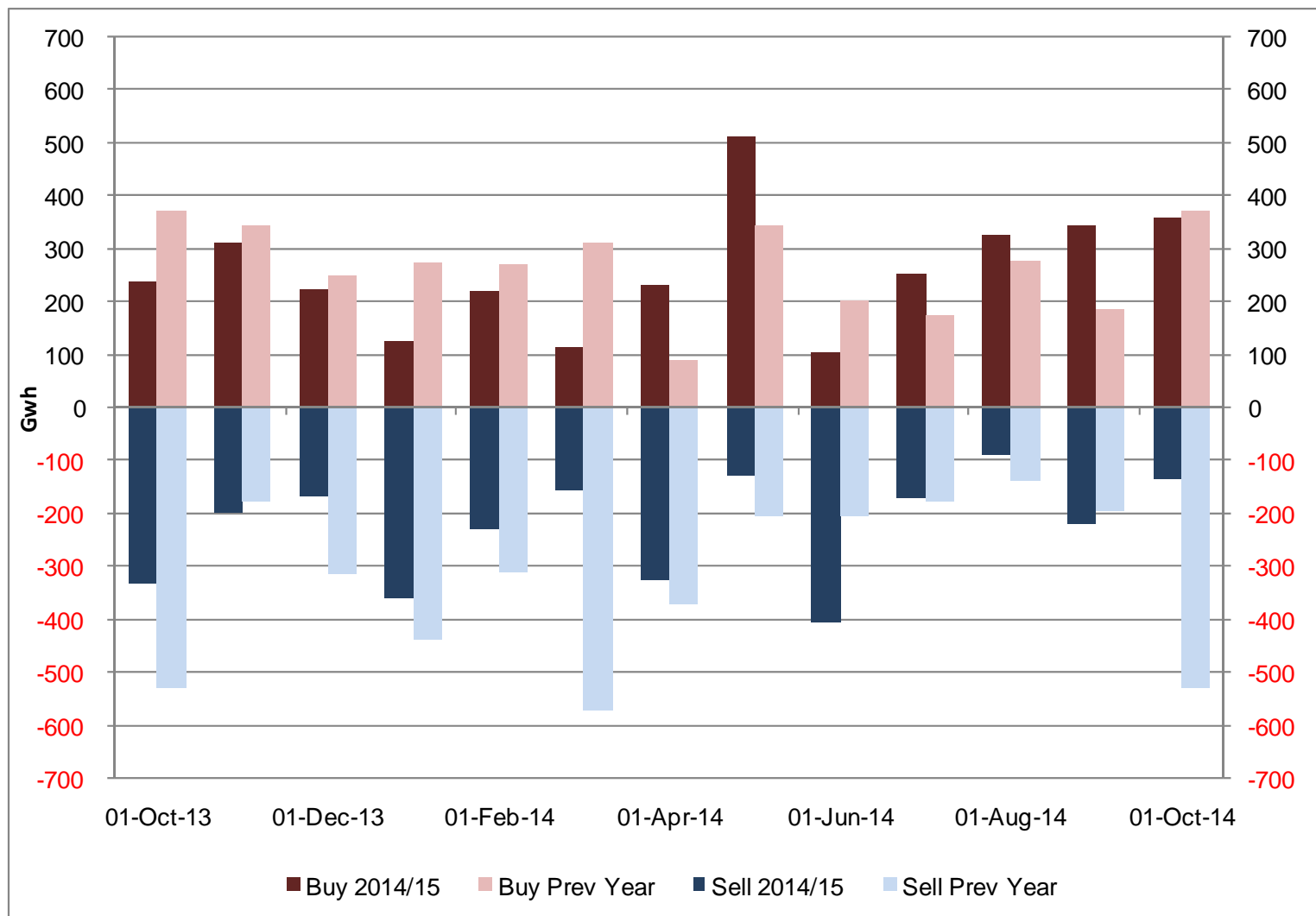
- Energy Balancing
- Capacity



# Transporter Energy Traded on the OCM nationalgrid

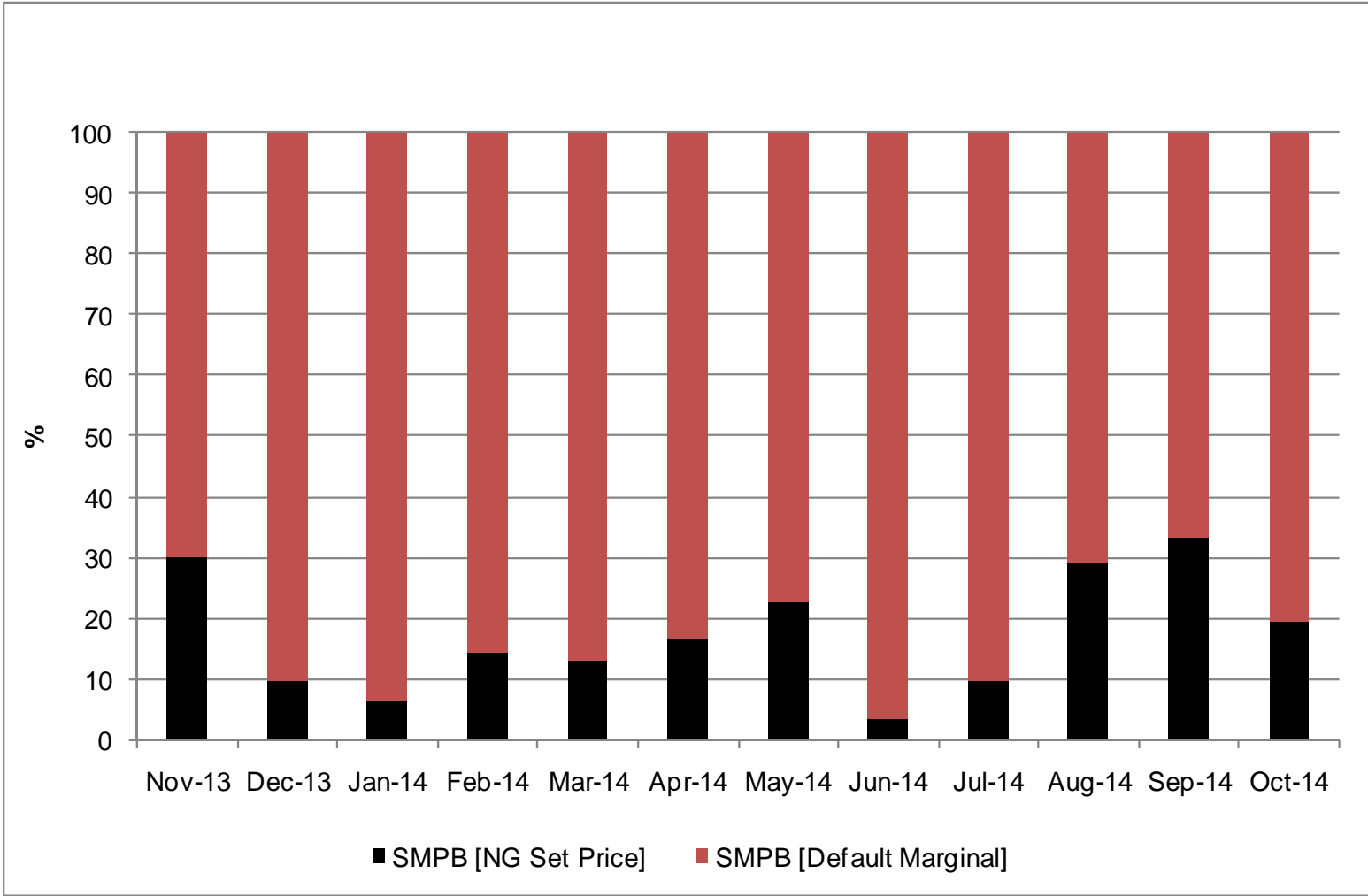
NGG Monthly Buys and Sells

Oct 2013 to Oct 2014 Vs Previous Year



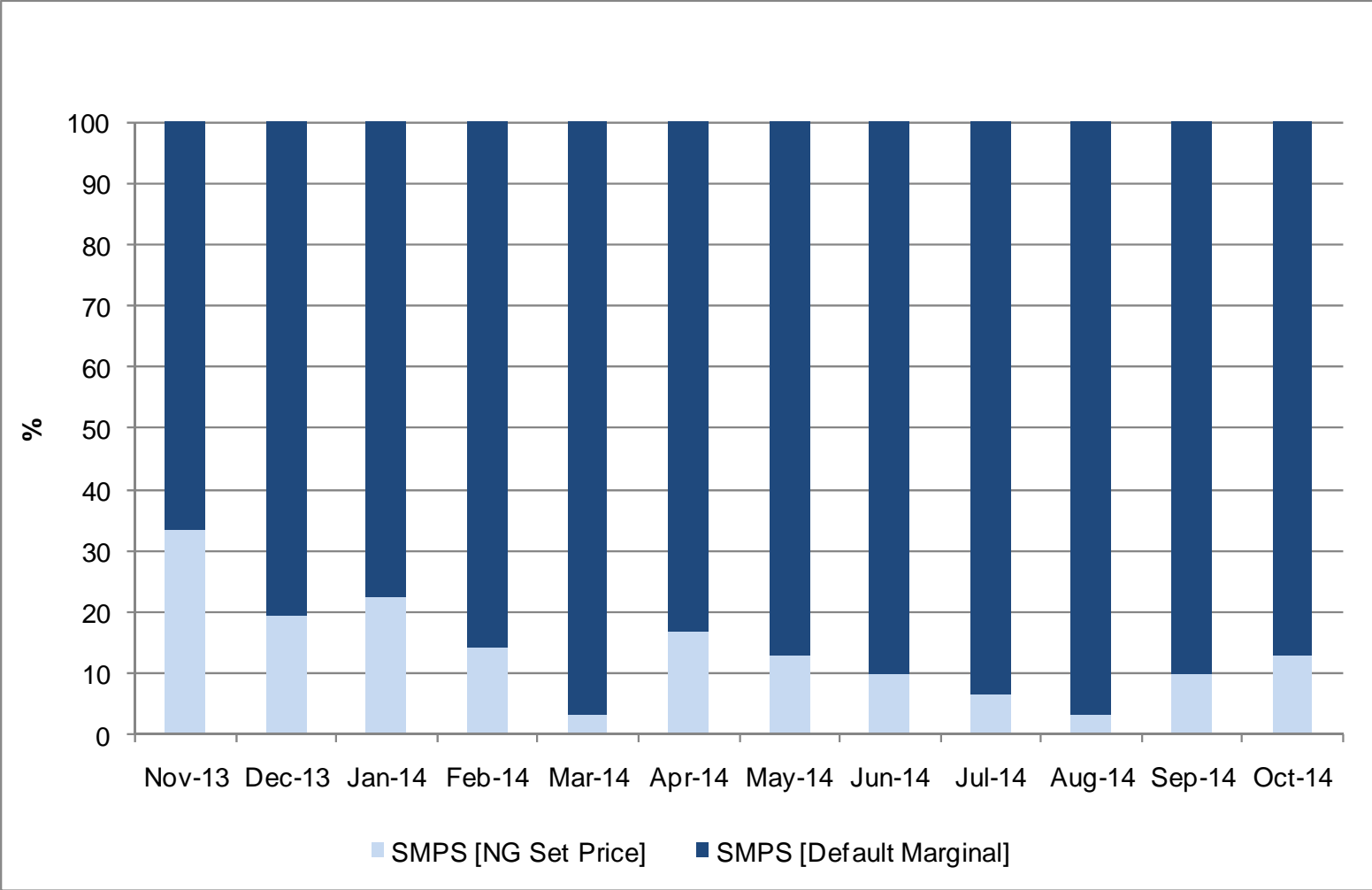
# Days of Default SMP Prices [SMPB]

From Nov 2013 to Oct 2014



# Days of Default SMP Prices [SMPS]

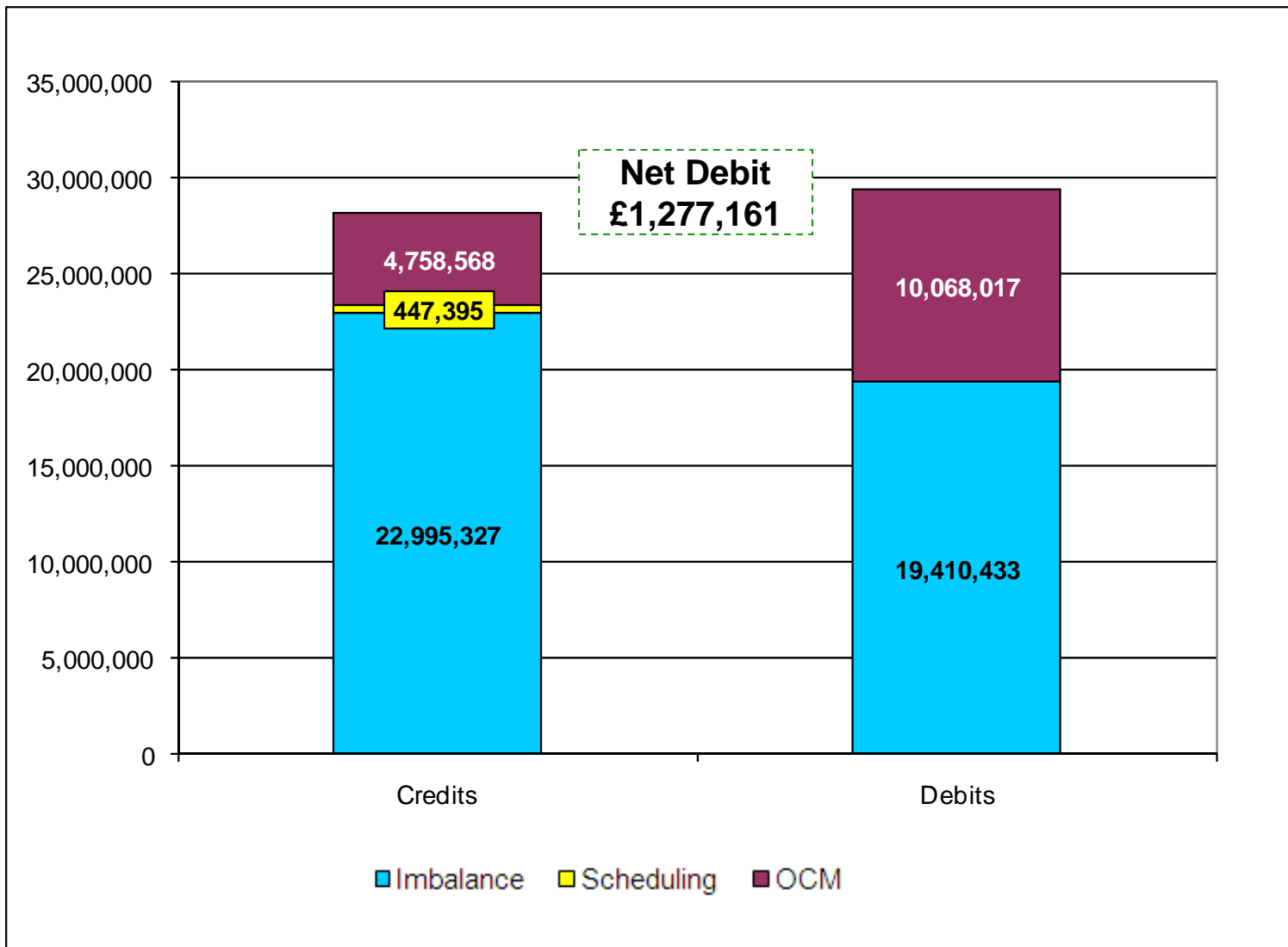
From Nov 2013 to Oct 2014



# Energy Balancing – Balancing Costs

Payments / Charges / Net Credit / Debit [Imbalance / Scheduling / OCM]

Aug - Sep 2014



# Energy Balancing – Balancing Costs

Aug - Sep 2014

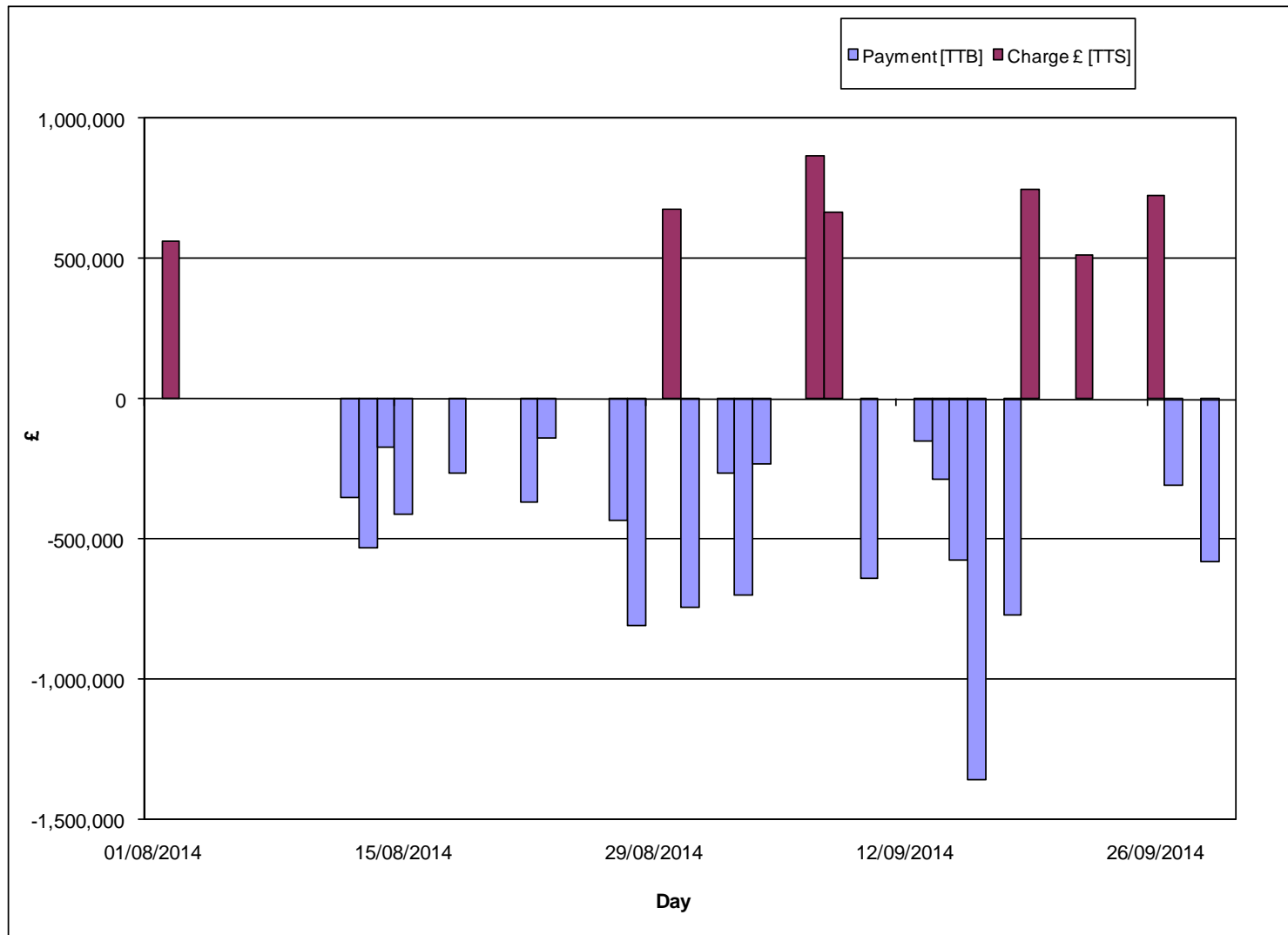
nationalgrid

		Aug-14	Sep-14
<b>Imbalance</b>	Payment £ [DCS]	-6,560,032	-12,850,402
	Charge £ [DCT]	9,422,537	13,572,790
<b>Scheduling</b>	Exit Charge £ [DXS]	14,128	14,941
	Exit Charge £ [EXS]	68,728	87,312
	Entry Charge £ [ESC]	116,900	145,386
<b>OCM</b>	Payment £ [TTB]	-4,206,930	-5,861,088
	Charge £ [TTS]	1,235,546	3,523,022
<b>Balancing Costs</b>		<b>90,877</b>	<b>-1,368,038</b>

# Energy Balancing – Balancing Costs

OCM Payments / Charges

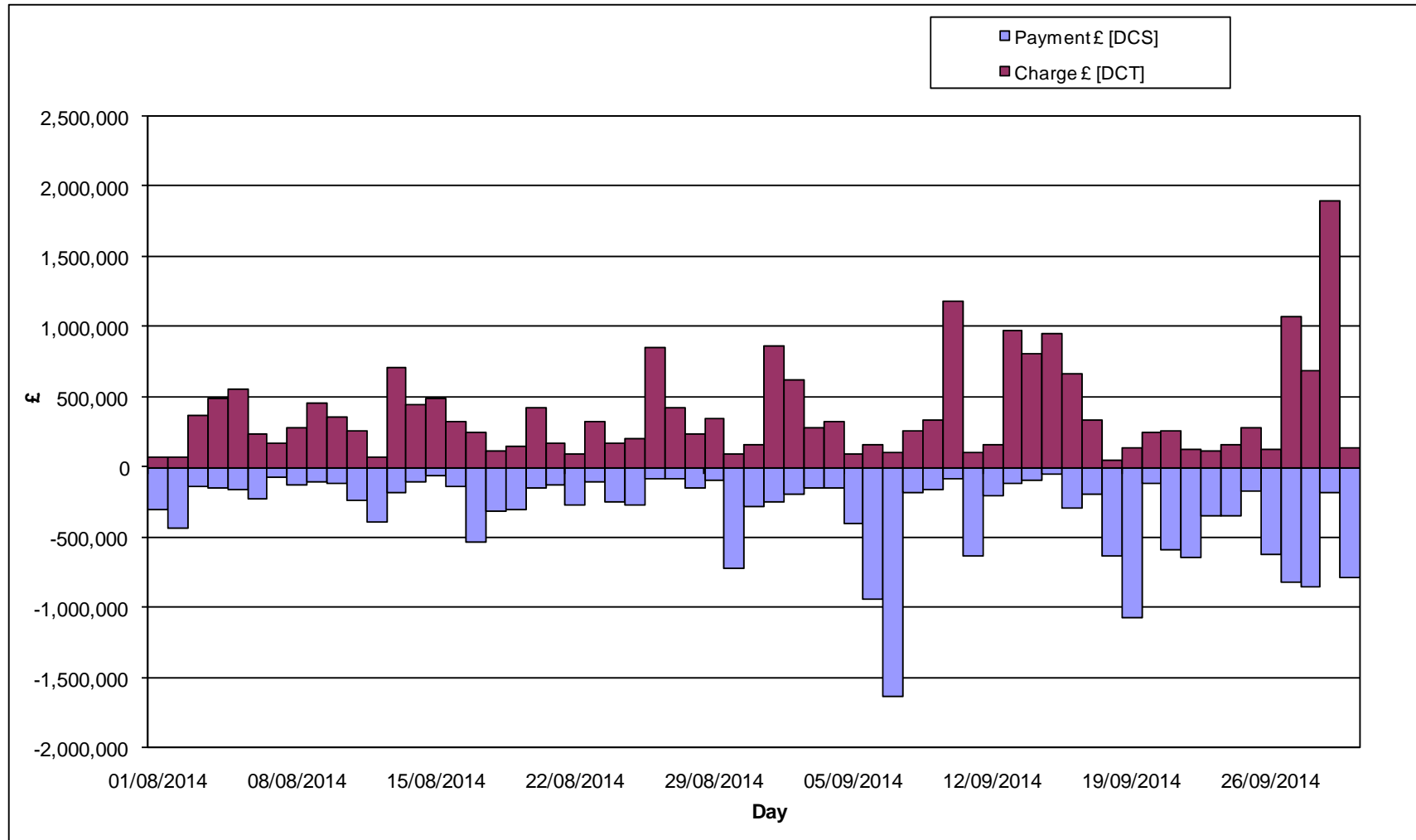
Aug - Sep 2014



# Energy Balancing – Balancing Costs

Imbalance Payments / Charges

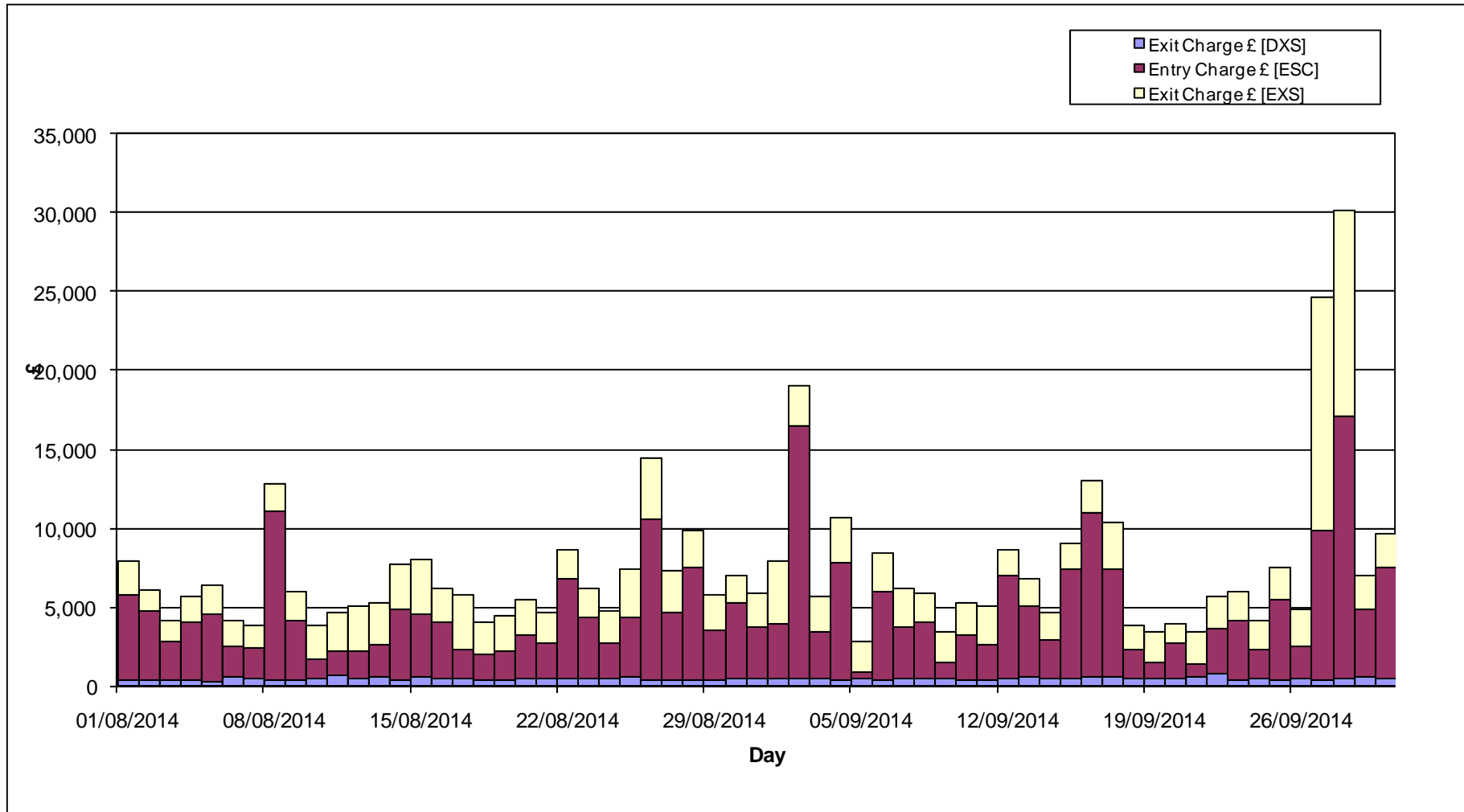
Aug - Sep 2014



# Energy Balancing – Balancing Costs

Scheduling Charges

Aug – Sep 2014





# Capacity Neutrality

Net Cost / Revenue From 1<sup>st</sup> April 2014 to 31<sup>th</sup> October 2014

---

	Revenue/Costs
WDDSEC/DAI Entry Capacity Revenue	-£205,777
Total Entry Constraint Management Operational Costs	£0
Entry Capacity Overrun Revenue	-£189,919
Non-Obligated Sales Revenue (Entry only)	-£16,323
Revenue from Locational Sells and PRI Charges	£0
<b>Net Revenue</b>	<b>-£412,019</b>