

System Management Principles Statement



- Compliance report for March 2013
- Summary of balancing actions and breaches for March 2013
- Performance compared to last year

Summary Report

	Mar 2013
Total Number of Buy Actions	23
Total Number of Sell Actions	32
Total	55

	Mar 2013
Number of Material Breaches	0
Number of Non-Material Breaches	0

	Mar 2013	Mar 2012
Number of Balancing Actions (Calendar year to date)	127	87
Number of Material Breaches (Calendar year to date)	0	0
Number of Non-Material Breaches (Calendar year to date)	0	0

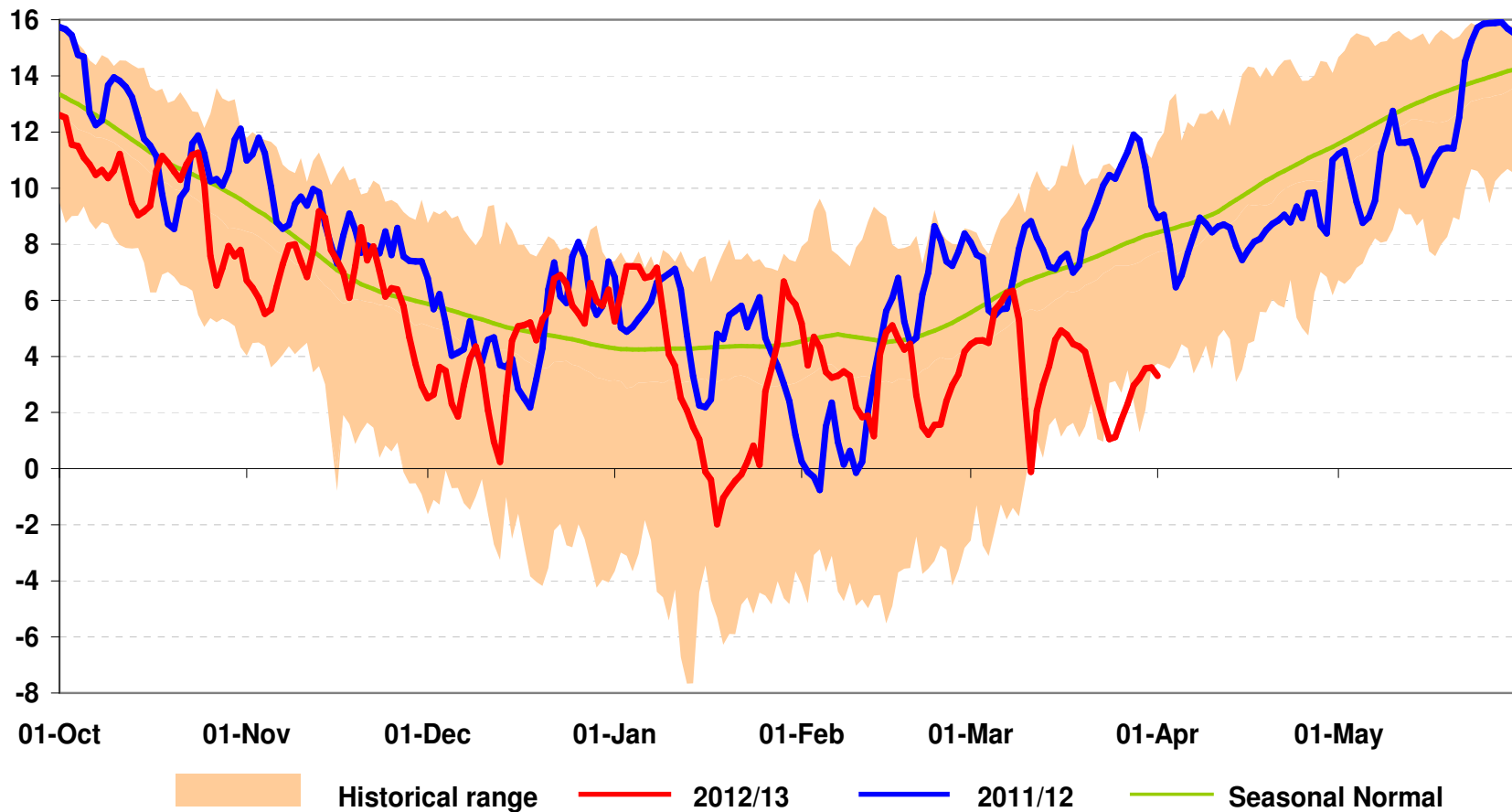
Weather



National Composite Weather

October to March 2012/13 Vs Historical Range

National Composite Weather 2012/13 compared to 2011/12 and historical range

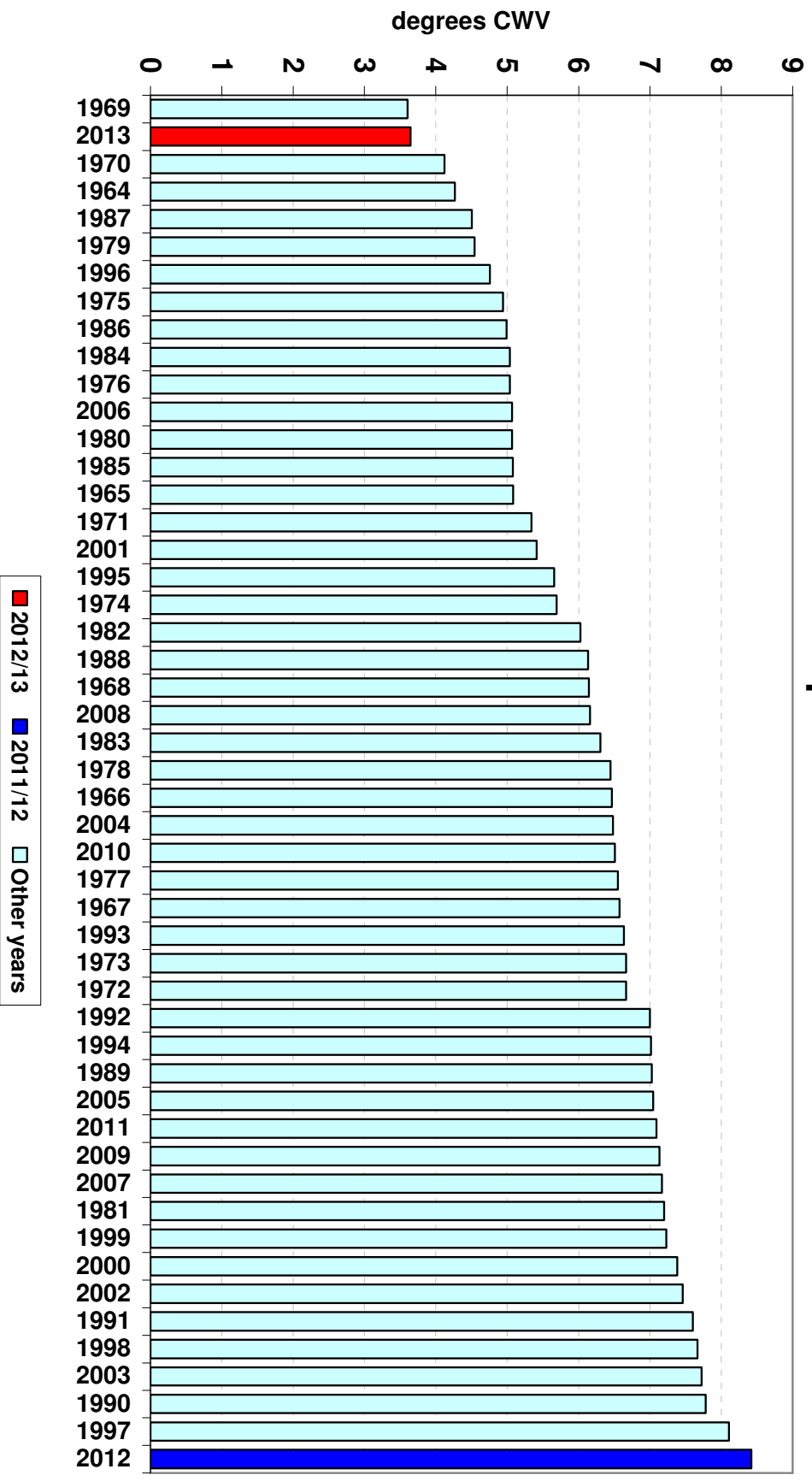


Mean Composite Weather Variables

nationalgrid

March 2013 Vs Previous Yrs.

Mean National Composite Weather for March



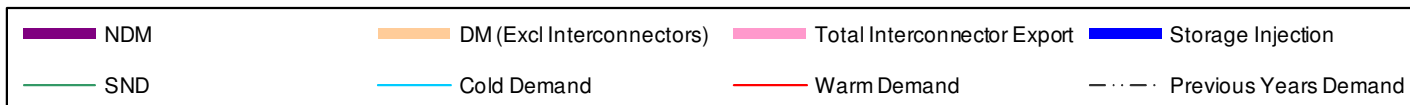
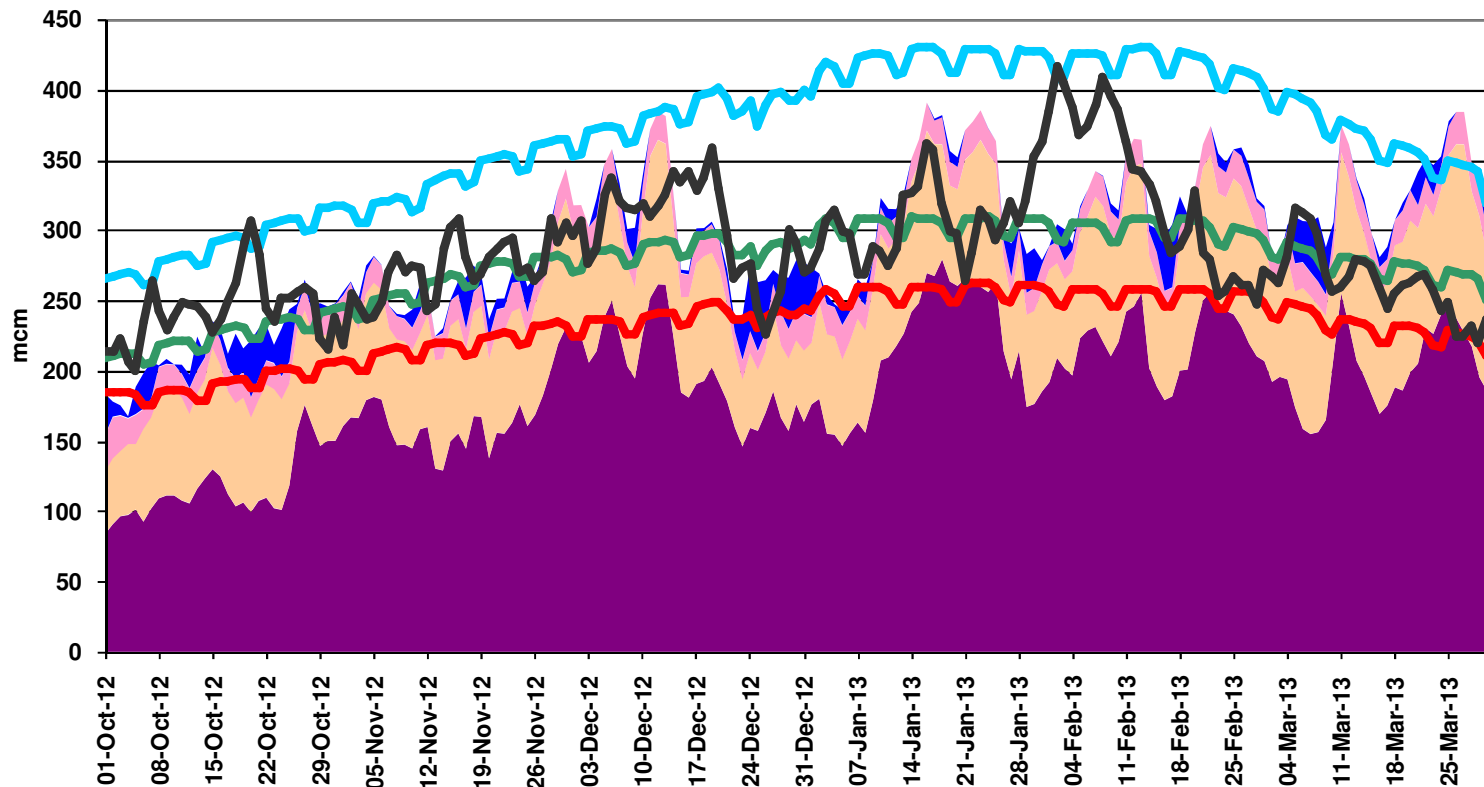
Demands



Gas Demand Breakdown

1st Oct 2012 to 31st Mar 2013

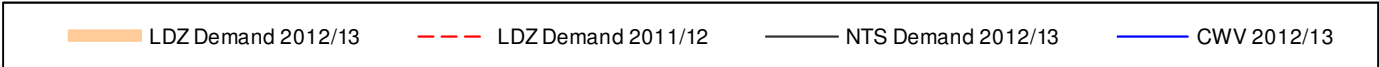
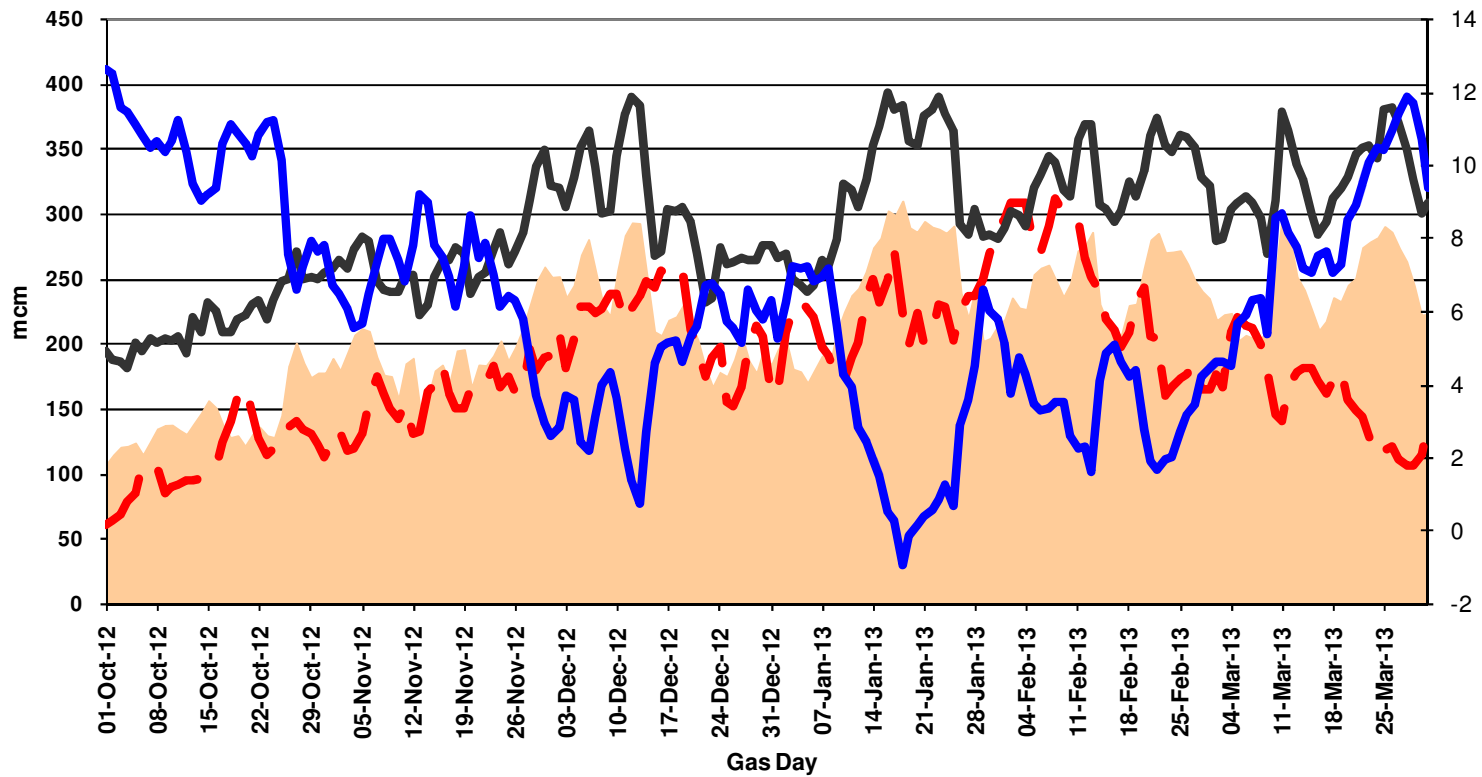
Gas Demand Breakdown
1st October 2012 to 31st March 2013 vs 2011/12



LDZ Demand

1st Oct 2012 to 31st March 2013

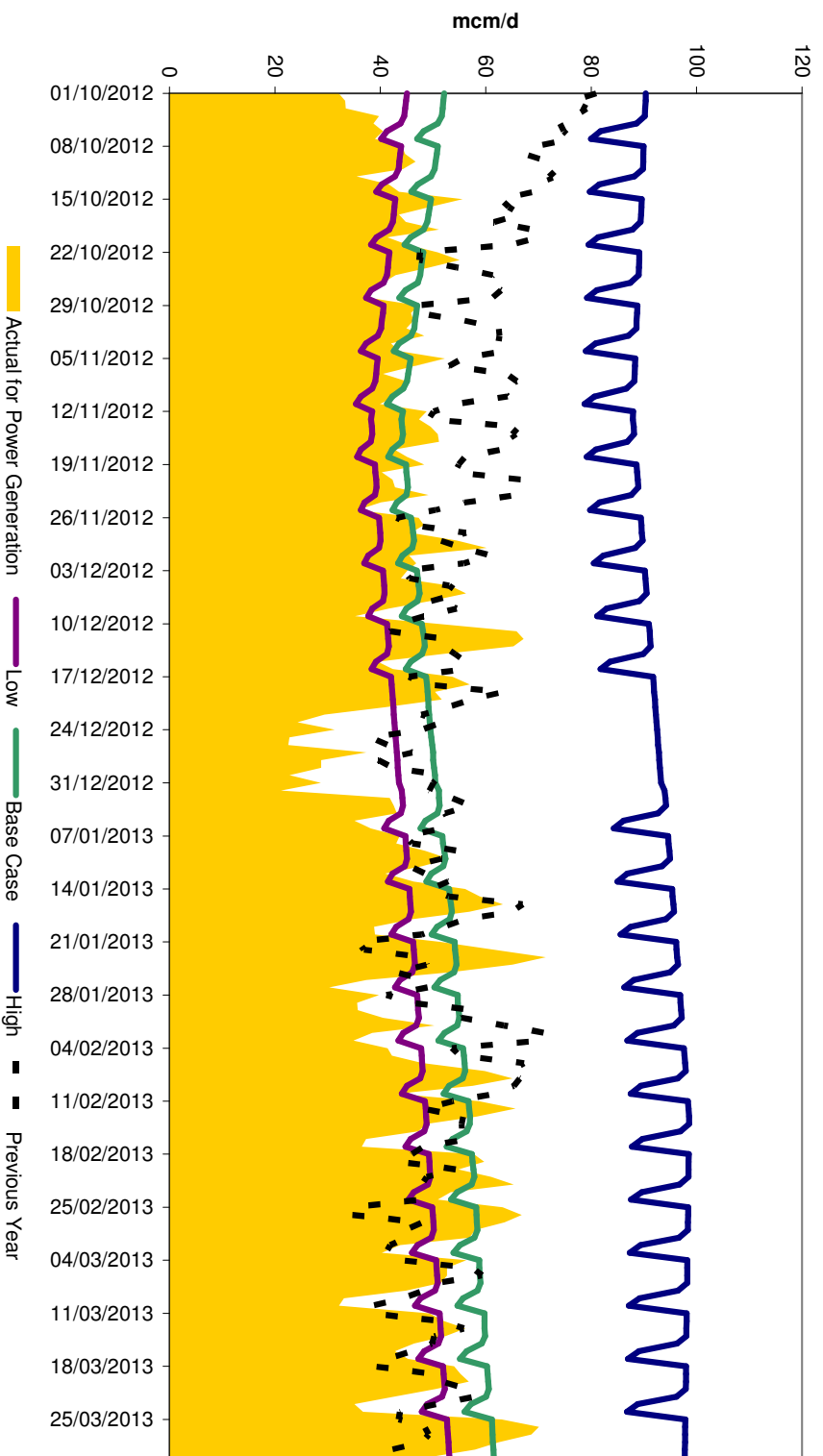
Gas Demand Breakdown [LDZ 2012/13 vs 2011/12] vs NTS Demand / CWV's
1st October 2012 to 31st March 2013



Power Generation

1st October 2012 to 31st March 2013

Gas Consumption for Power Generation



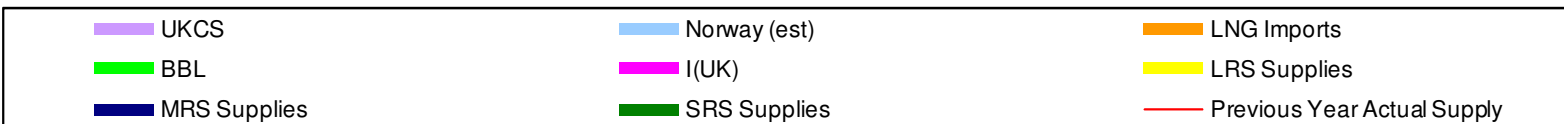
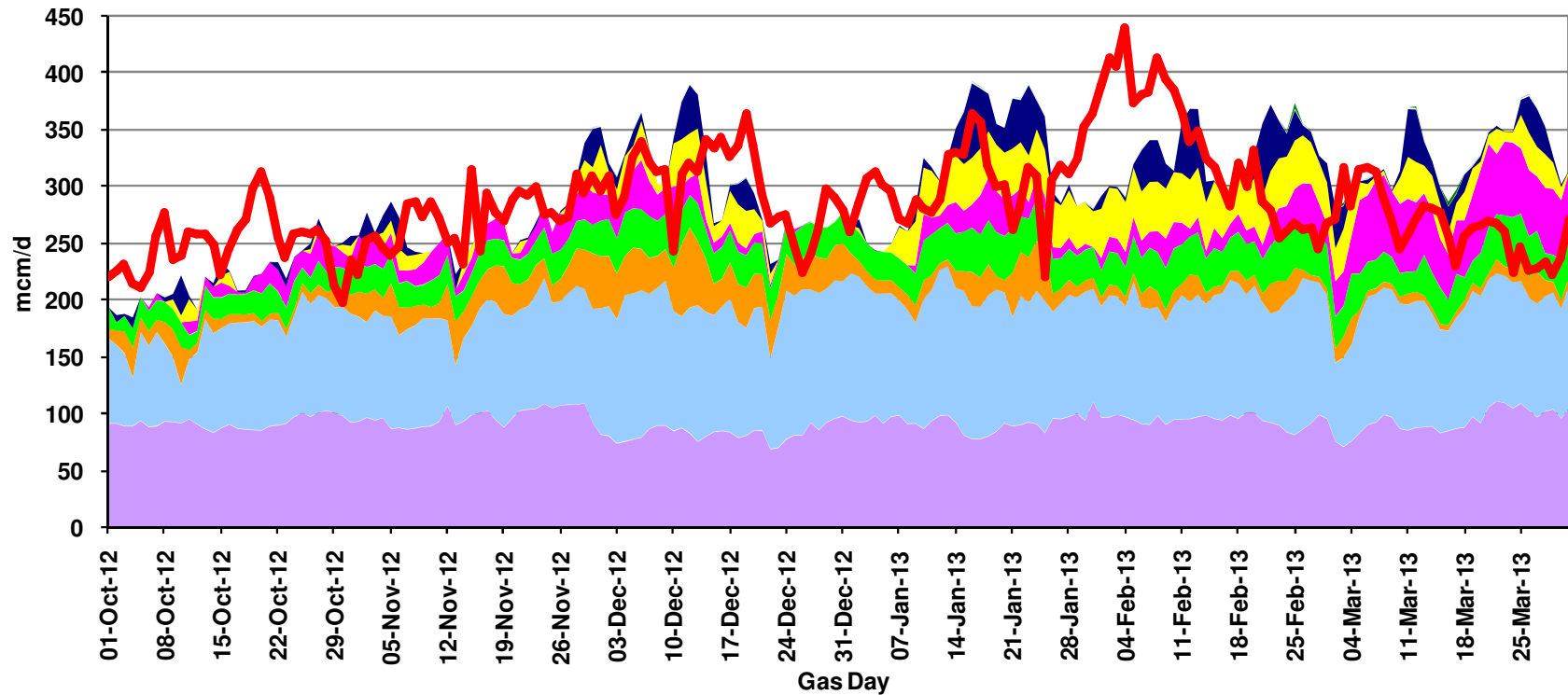
Supplies



Gas Supply Breakdown

1st Oct 2012 to 31st March 2013

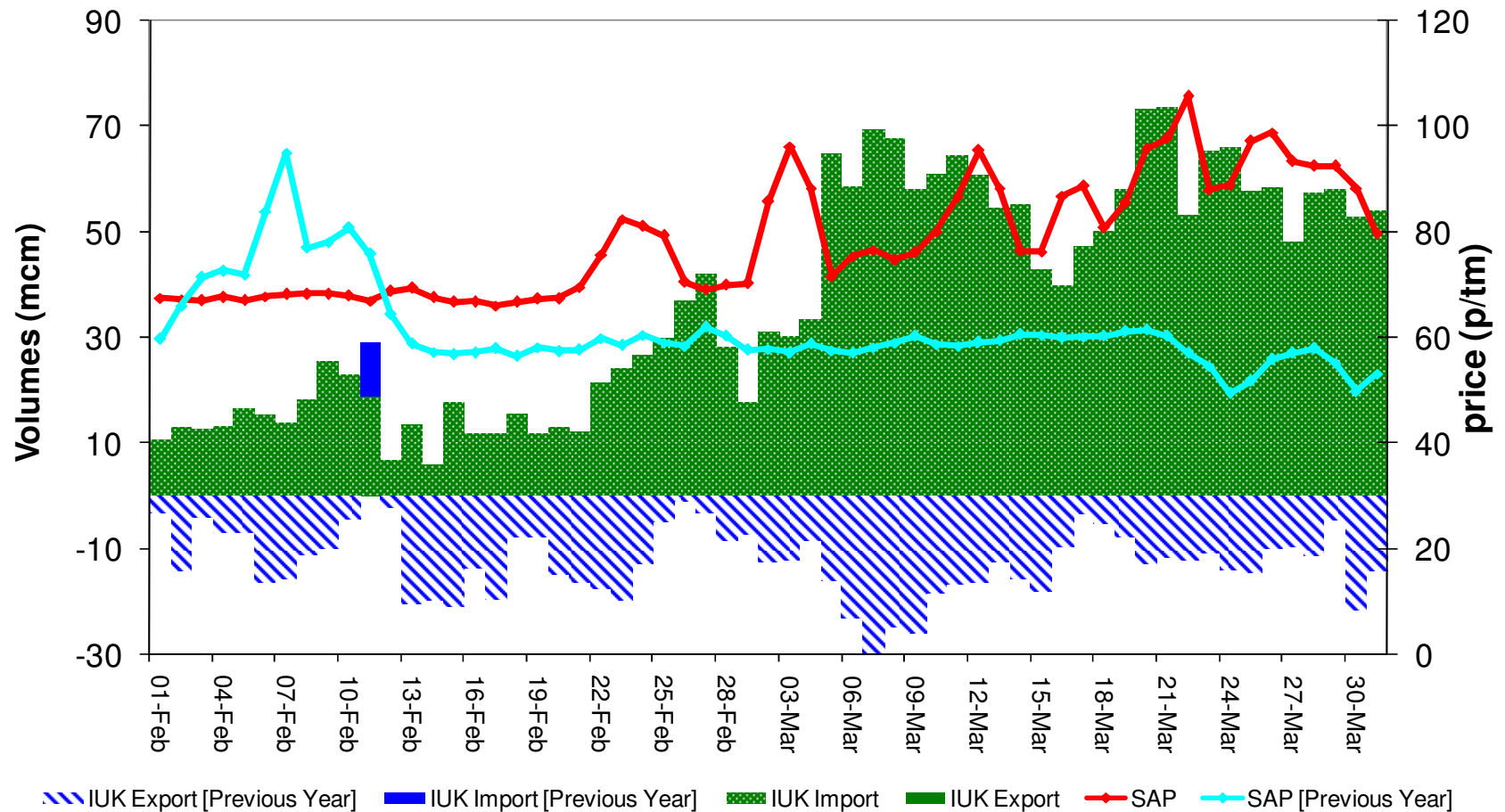
Gas Supply Breakdown
1st October 2012 to 31st March 2013



Gas Supply Breakdown – IUK

1st Feb to 31st March 2013

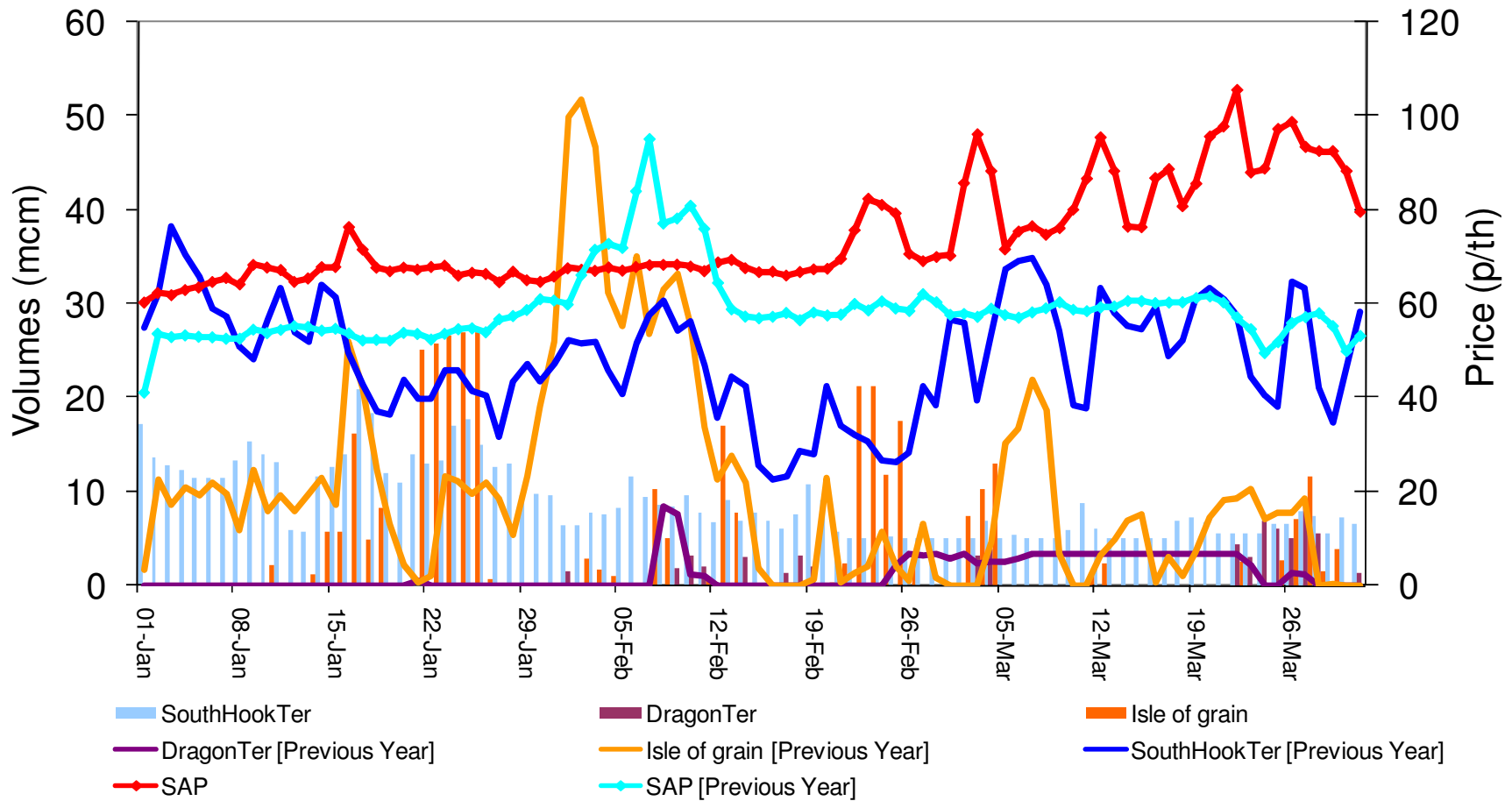
IUK Export / Import volumes Feb - Mar 2013 vs Previous Year / SAP



Gas Supply Breakdown – LNG

1st Feb to 31st March 2013

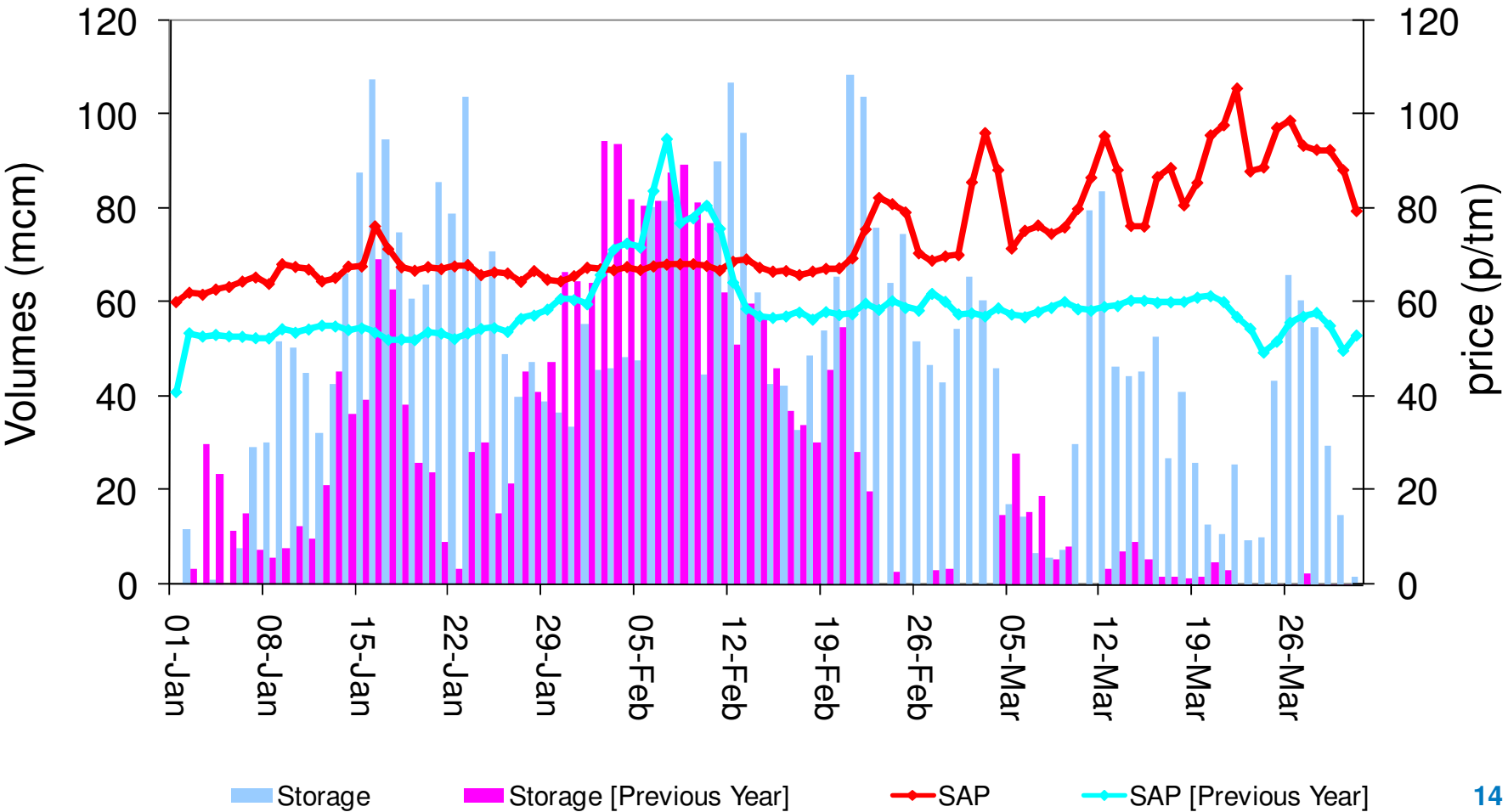
LNG terminal flows Jan 2013 - Mar 2013 vs Previous Year / SAP



Gas Supply Breakdown – Storage

1st Feb to 31st March 2013

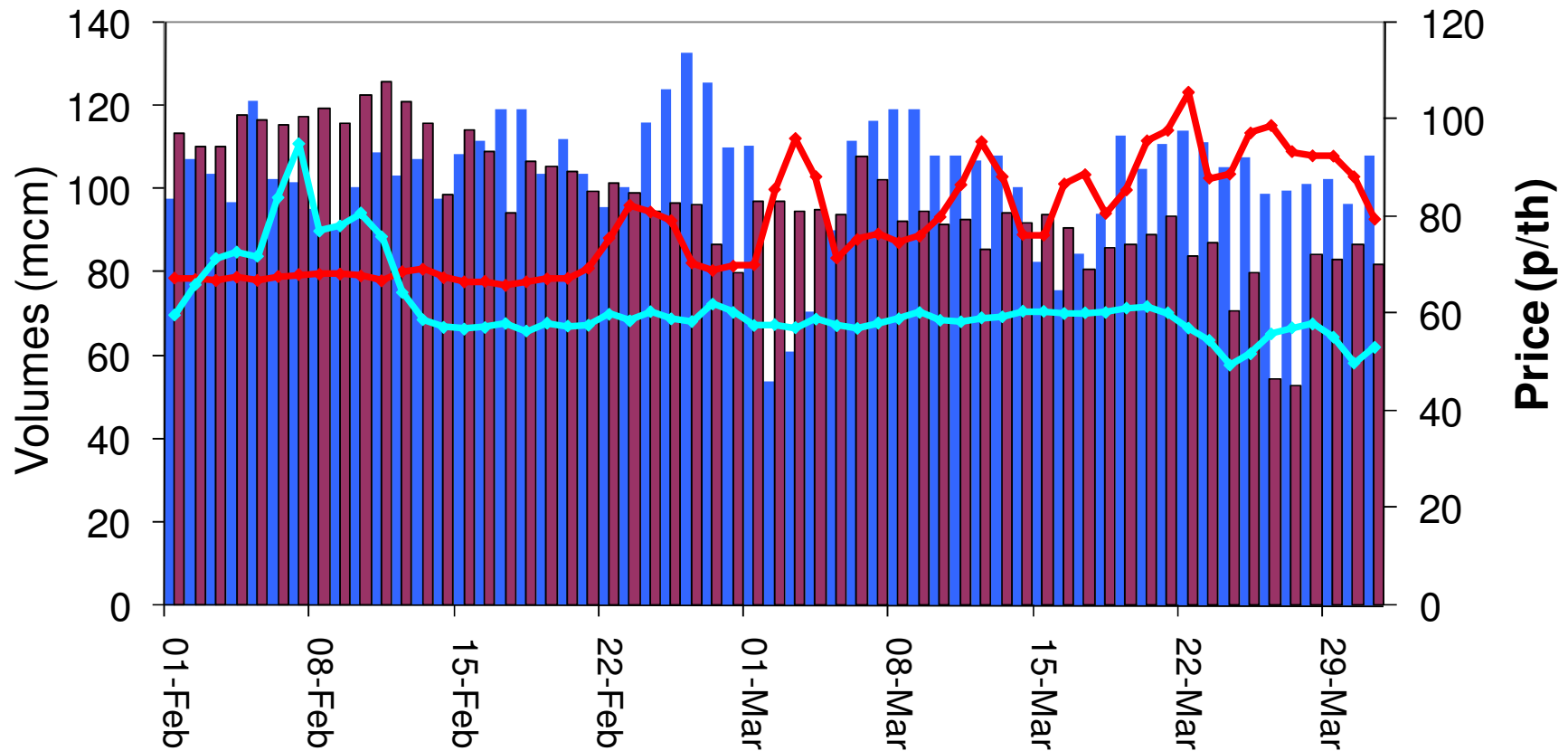
Storage flows Jan 2013 - Mar 2013 vs Previous Year / SAP



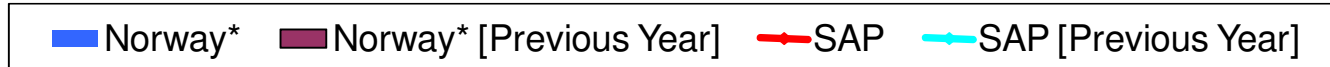
Gas Supply Breakdown – Norway

1st Feb to 31st March 2013

Norwegian* supply volumes Feb - Mar 2013 vs Previous Year / SAP



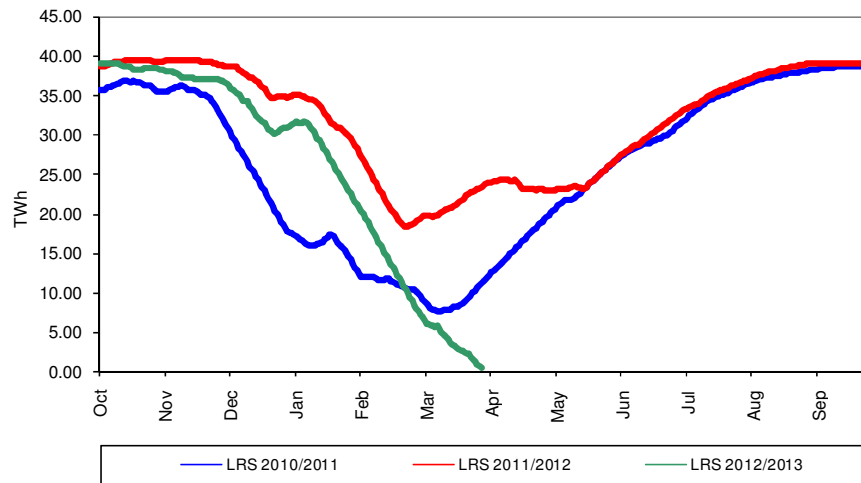
*Estimated



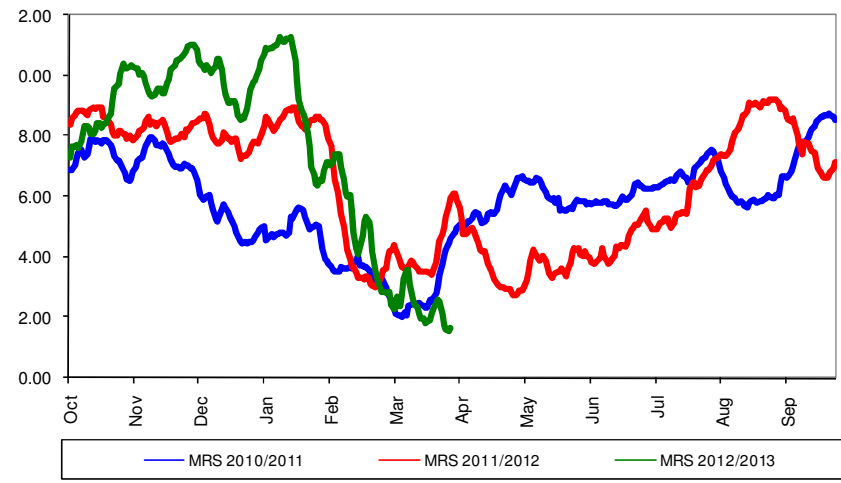
Storage Stocks - UK

1st Oct 2012 to 31st Mar 2013

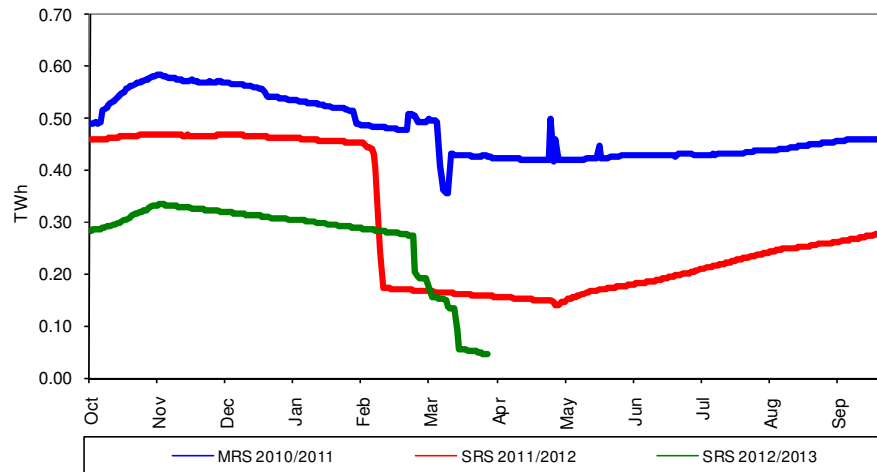
LRS Stocks



MRS Stocks

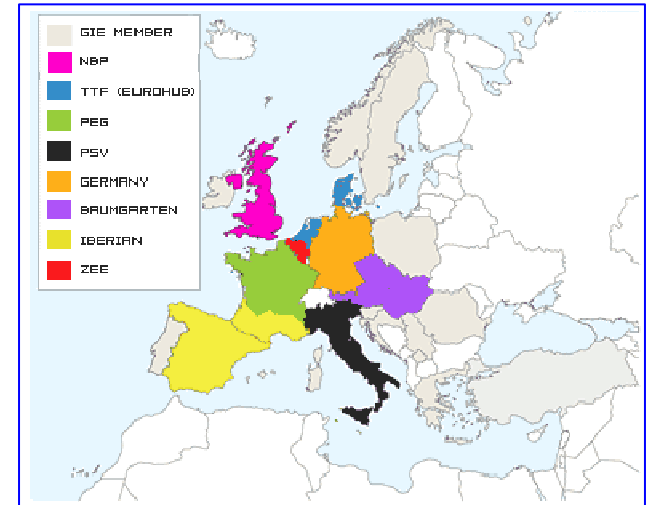
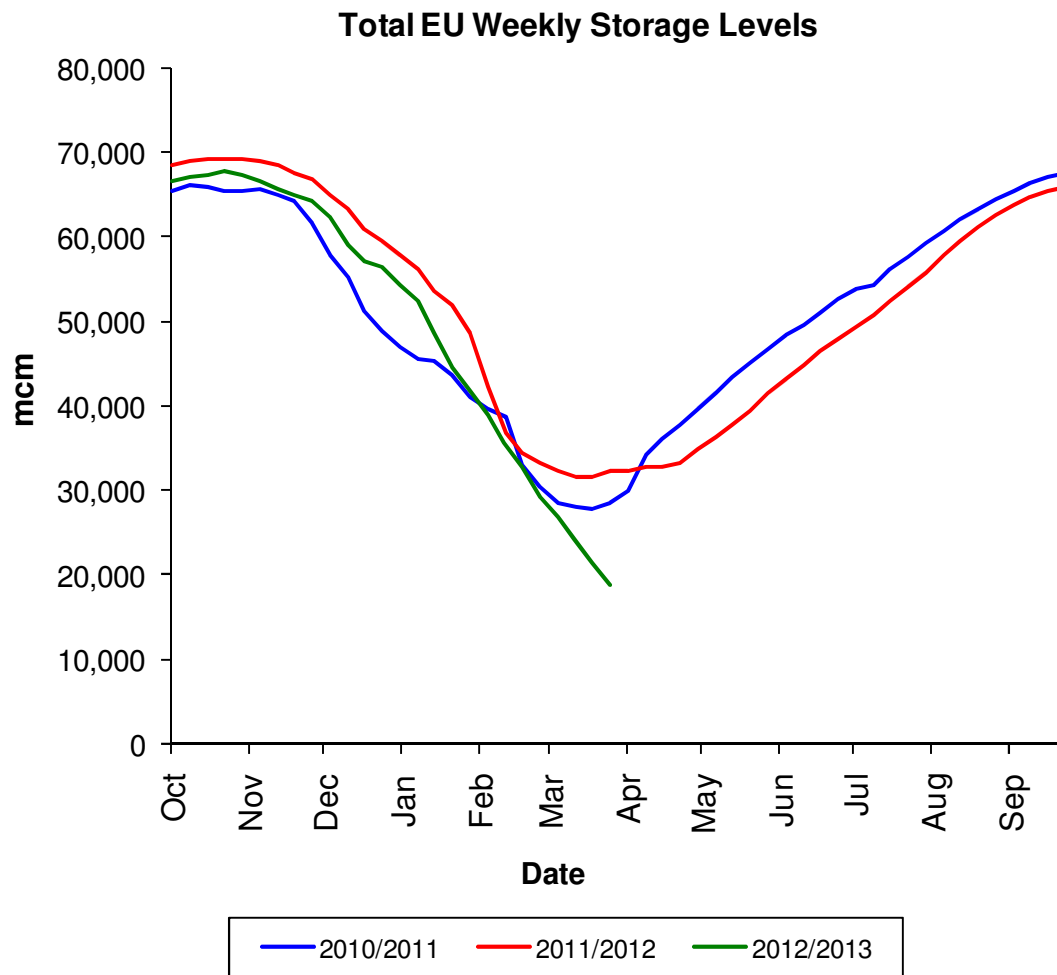


SRS Stocks



Storage Stocks - EU

From 1st Oct 2012 to 31st Mar 2013 vs. Previous Years



Stocklevel Status at 06:00CET on Wed 06/03/2013		
Hub Area	Stock Level (mcm)	% Full
Baumgarten	3837	22%
Germany	4302	21%
Iberian	1803	63%
NBP	299	6%
France	970	8%
PSV	6318	40%
SOUTH-EAST	78	17%
TTF (Eurohub)	594	29%
ZEE	142	20%
Total Hubs	18343	25%

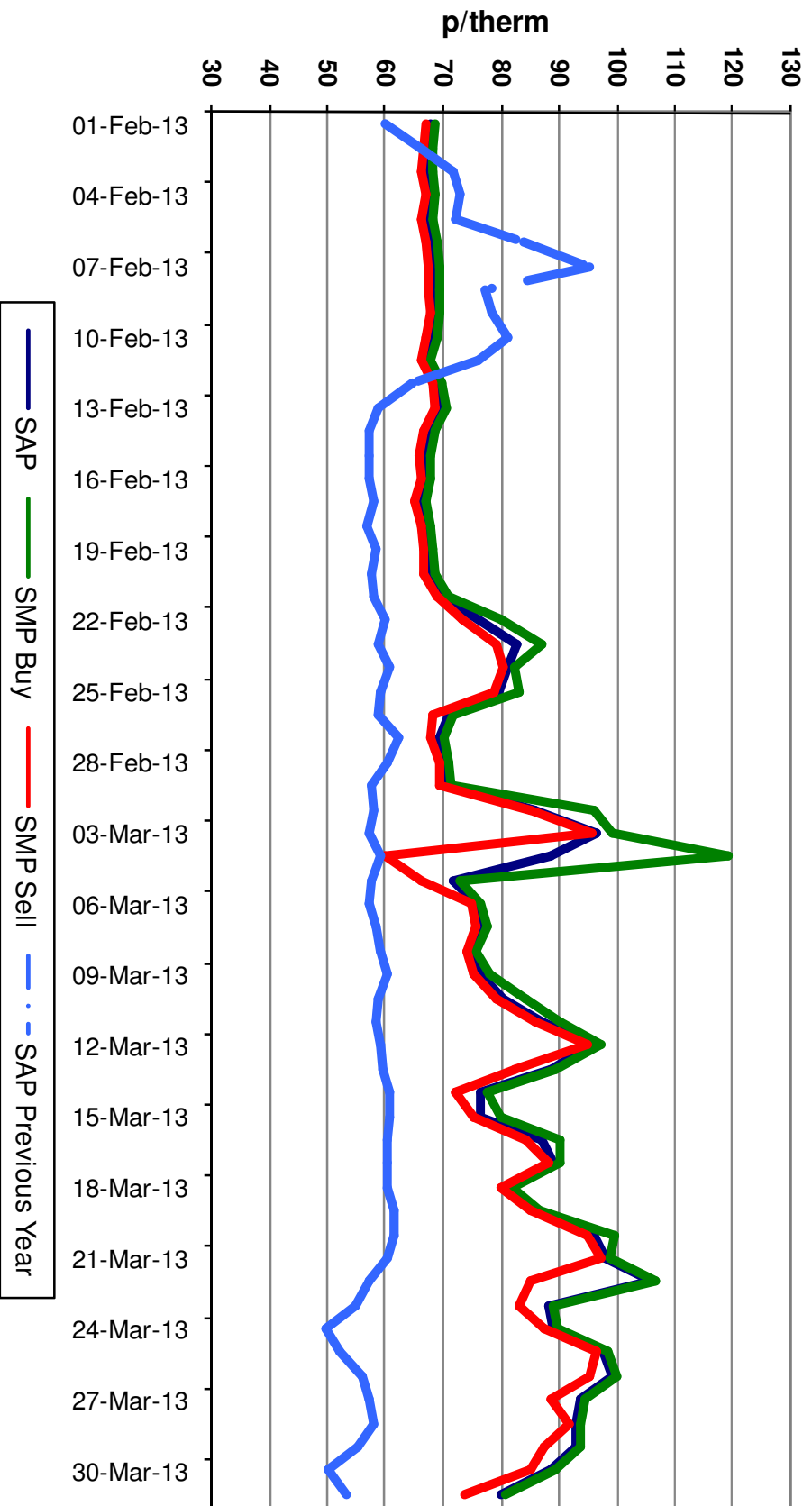
Transporter Actions and Neutrality



System Prices

1st Feb 2013 to 9th Mar 2013

System Prices
1st Feb 2013 to 31st March 2013 Vs Previous Years SAP

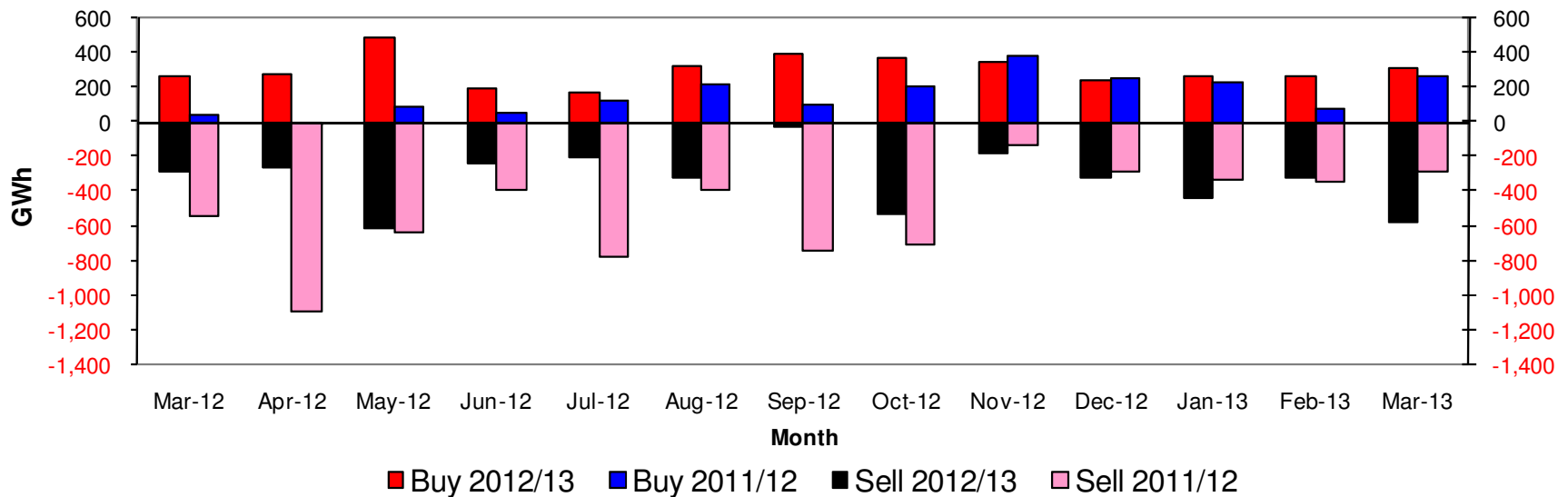


Transporter Energy Traded on the OCM

Mar 2012 to Mar 2013

Year	Buy [GWh]	Sell [GWh]
2013 [YTD]	851	-1324
2012	3405	-3624

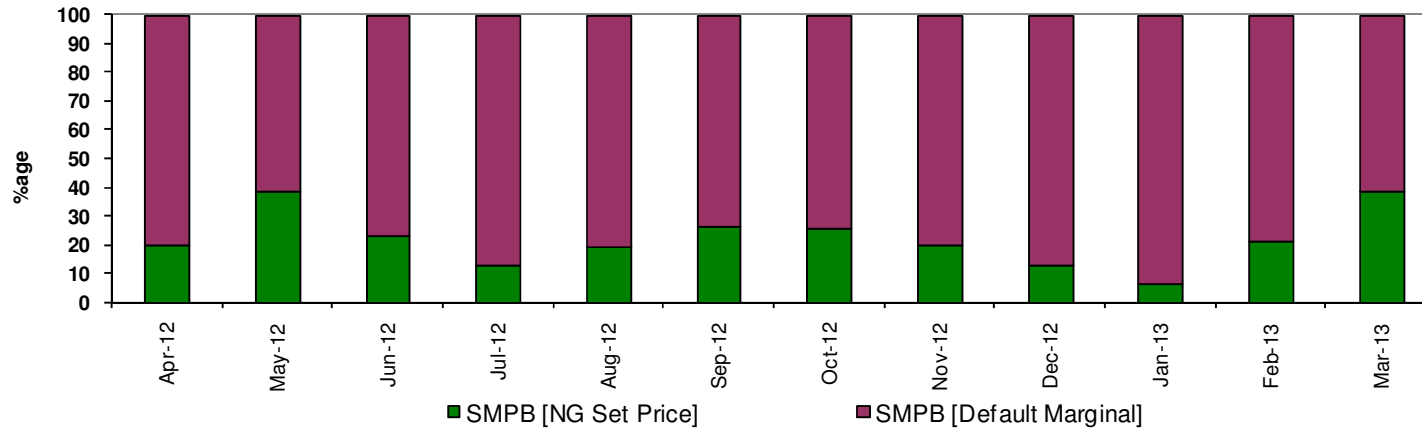
National Grid Monthly Buys and Sells
Mar 2012 to Mar 2013 vs 2011/12



Days of Default SMP Prices

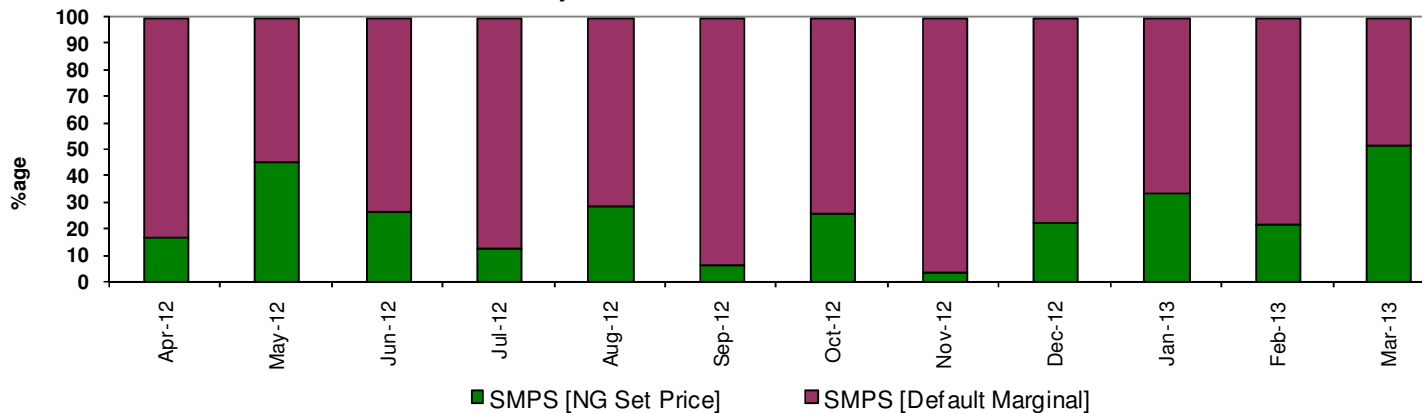
From Apr 2012 to Mar 2013

**SMPB Calculation Summary
Apr 2012 to Mar 2013**



Month	SMPB	SMPS	Both
Mar 13	61%	48%	23%

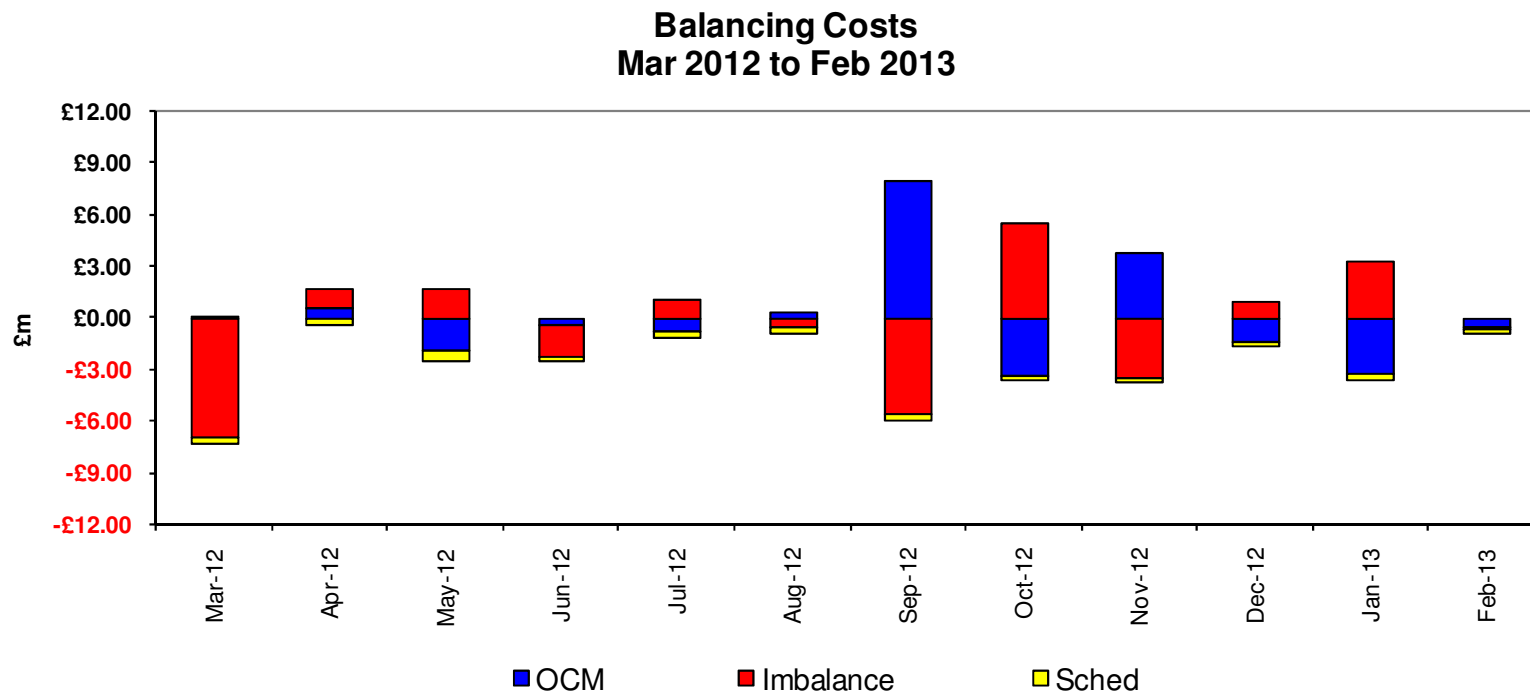
**SMPS Calculation Summary
Apr 2012 to Mar 2013**



Energy Balancing

Mar 2012 to Feb 2013

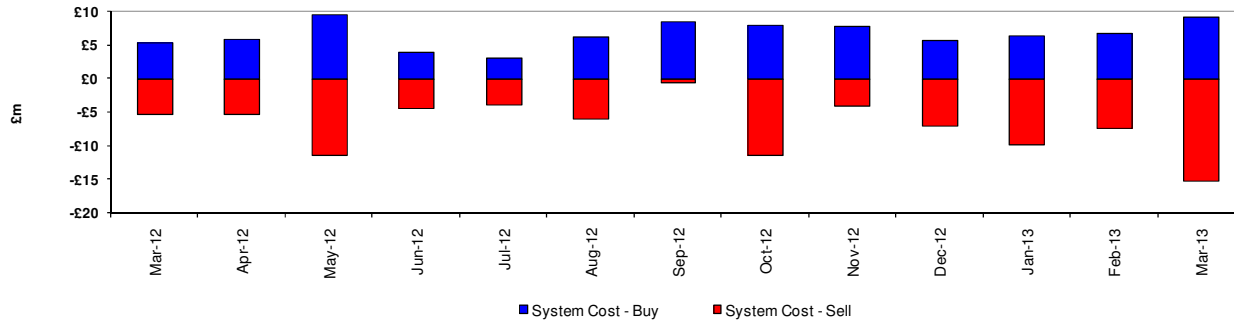
Year	OCM	Imbalance	Scheduling	Bal Costs
2013 [YTD]	-£3.70	£3.19	-£0.50	-£1.01
Jan – Dec 2012	-£0.29	-£6.73	-£3.79	-£10.81



Transporter Actions / Imbalance / Scheduling

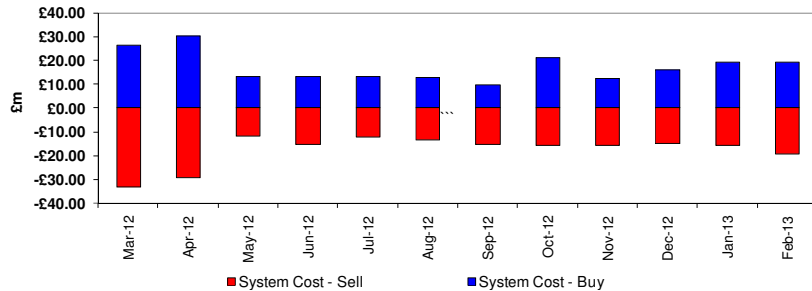
From Mar 2012 to Feb/Mar 2013

Transporter Actions on OCM
Mar 2012 to Mar 2013

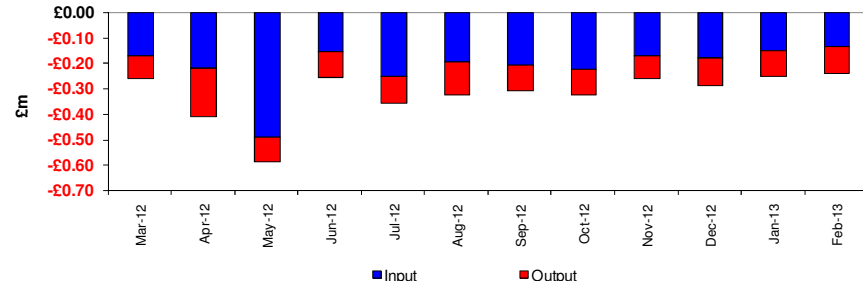


Yearly Period	Feb-13			
	Quantity (TWh)	Average (p/kWh)	Price (p/therm)	Cost £m
System Buy	0.80	2.39	70.07	19.22
System Sell	-0.78	2.47	72.45	-19.41
Total	0.02			-0.19

Shipper Imbalances - Revenue Costs
Mar 2012 to Feb 2013



Scheduling Revenues
Mar 2012 to Feb 2013



Buy Sell Ind1	Quantity (TWh)	Average (p/kWh)	Price (Therms)	Cost (£m)
System Buy	0.31	2.97	86.96	9.19
System Sell	0.57	2.67	78.19	-15.25
Total	0.88			-6.06

Yearly Period	Feb-13	
	Cost Type	Cost £m
Scheduling	Input	-0.14
Scheduling	Ouput	-0.10
	Total	-0.24

Capacity Neutrality

Net Cost / Revenue

From 1st April 2012 to 28th February 2013

Month	Revenue / Costs
WDDSEC/DAI Revenue	-£352,104
Buy Back Costs	£0
Capacity management Agreement Costs	£0
Entry Capacity Overrun Revenue	-£373,746
Non-Obligated Sales Revenue	-£778,503
Revenue from Locational Sells and PRI Charges	£0
Net Revenue	-£1,504,353

Capacity Neutrality

Revenues from WDDSEC and DAI, Buybacks and Capacity Management Agreement

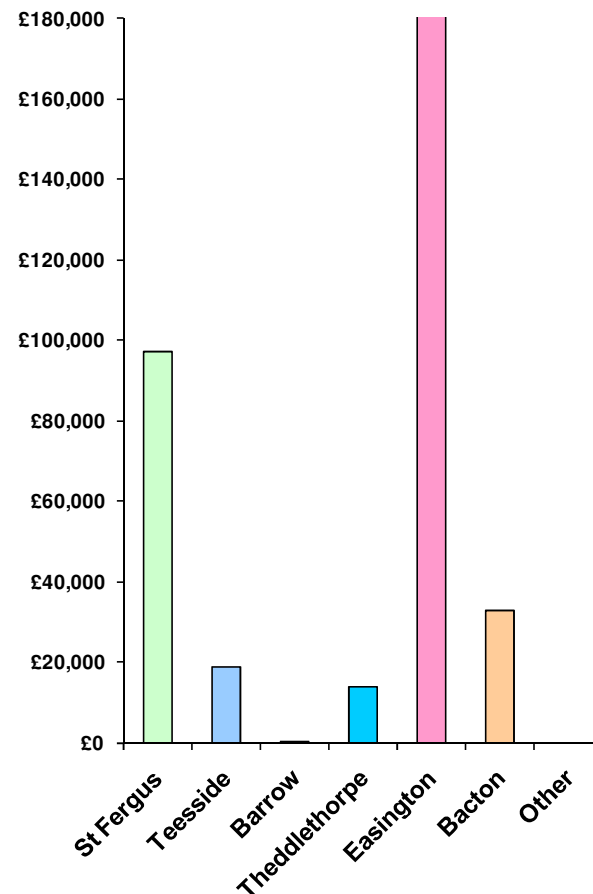


From 1st April 2012 to 28th February 2013

St Fergus	-£97,083
Teesside	-£18,710
Barrow	-£147
Theddlethorpe	-£13,814
Easington	-£189,665
Bacton	-£32,675
Other	-£10
Net Revenue	-£352,104

No 'Total Capacity Constraint Management Costs' [Prompt Buy Backs / Capacity Management Agreement] during the period 1st April 2012 to 28th February 2013

Capacity Neutrality
Revenues from WDDSEC and DAI
April 2012 to February 2013



Capacity Neutrality

Revenues from Entry Cap Overruns and Non-Obligated Sales, and Locational Sells and PRI Charges.



From 1st April 2012 to 28th February 2013

Month	Entry Cap Overrun Revenue	Non-Obligated Sales Revenue
Apr-12	-£98,225	-£12
May-12	-£68,751	£0
Jun-12	-£3	£0
Jul-12	-£10,523	£0
Aug-12	-£3,207	£0
Sep-12	-£33,032	£0
Oct-12	-£27,884	-£55,974
Nov-12	-£32,623	-£54,168.00
Dec-12	-£56,108	-£55,973.60
Jan-13	-£42,050	-£321,731.10
Feb-13	-£1,339	-£290,645.00
Mar-13		
TOTAL	-£373,746	-£778,503.70

Month	Locational Sells and PRI Charges Revenue
Apr-12	£0.00
May-12	£0.00
Jun-12	£0.00
Jul-12	£0.00
Aug-12	£0.00
Sep-12	£0.00
Oct-12	£0.00
Nov-12	£0.00
Dec-12	£0.00
Jan-13	£0.00
Feb-13	£0.00
Mar-13	
TOTAL	£0.00