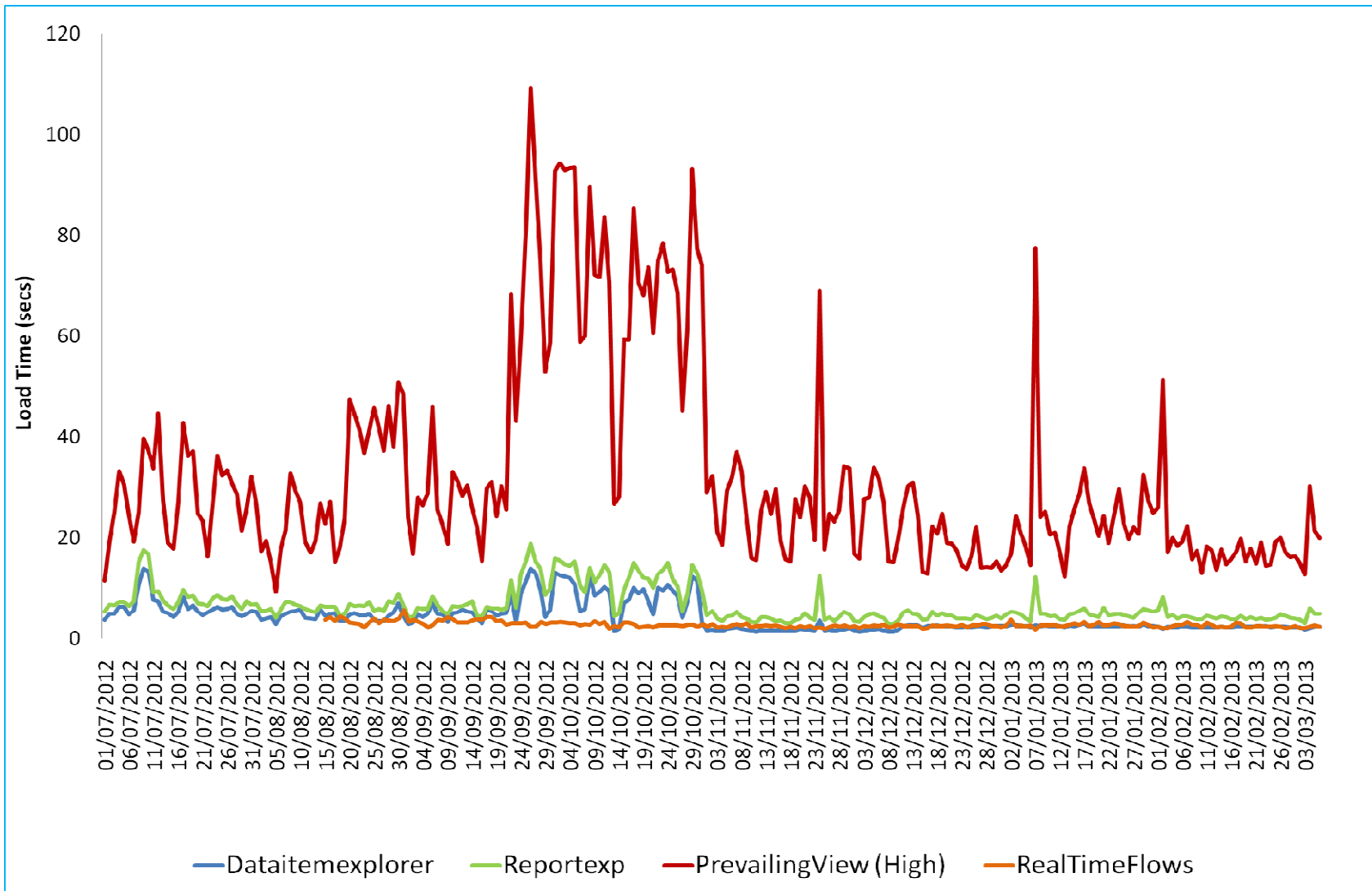


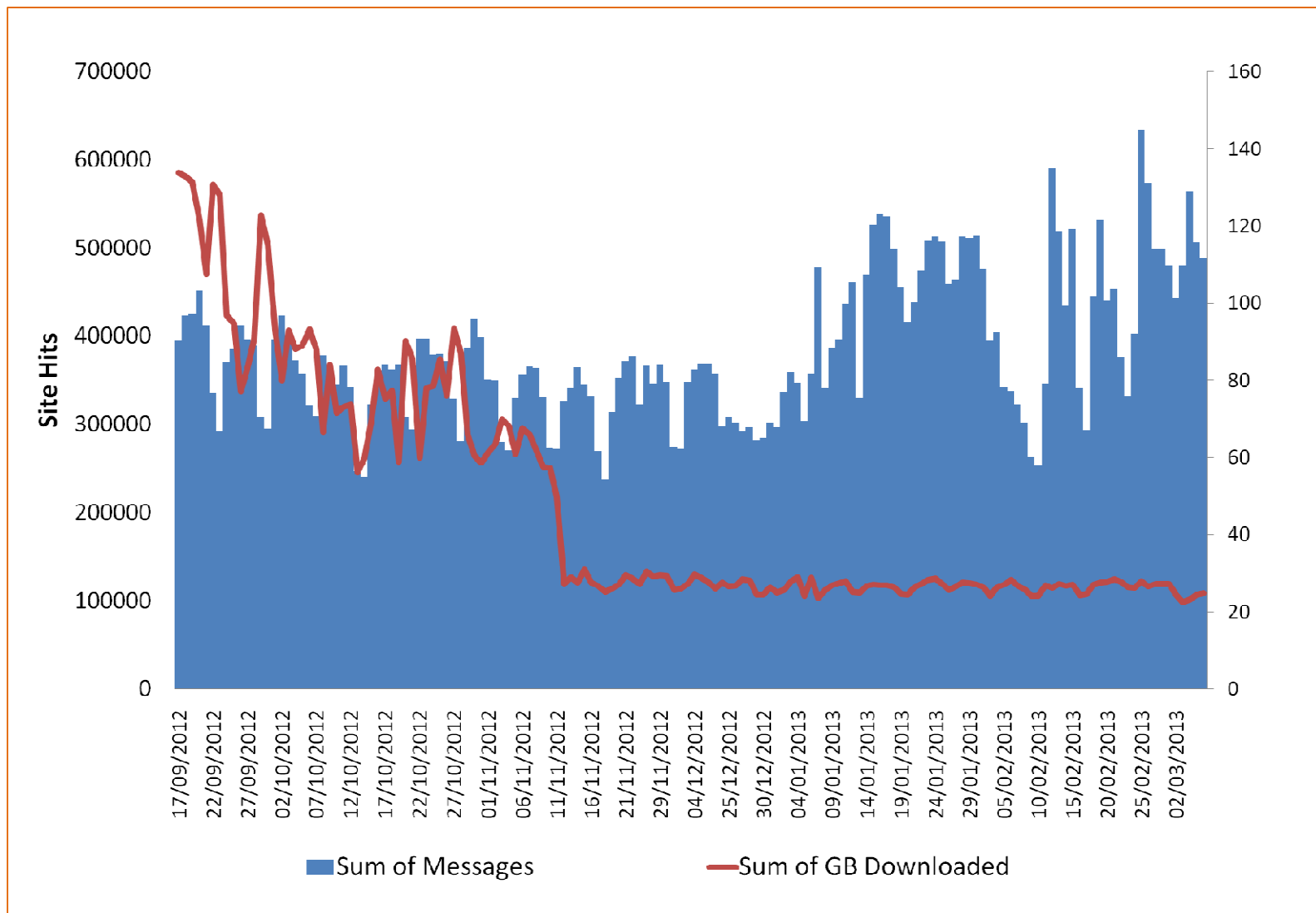
# MIPI Performance Update



# MIPI Performance – Average Load Times



# Market Information – Data Acquisition



## Contact Details

---

Please use the contact details below for help and advice regarding publication frequencies of gas data, or for any other general queries about gas data availability or content:

**e-mail:** [sysop.centre.reporting@nationalgrid.com](mailto:sysop.centre.reporting@nationalgrid.com)

**Tel:** [+44 1926 65 6474](tel:+441926656474)