

System Management Principles Statement



- Compliance report for December 2013 and January 2014
- Summary of balancing actions and breaches for December 2013 - January 2014
- Performance compared to last year

Summary Report

	Dec-13	Jan-14
Total Number of Buy Actions	9	5
Total Number of Sell Actions	10	17
Total	19	22

	Dec-13	Jan-14
Number of Material Breaches	0	0
Number of Non-Material Breaches	0	0

	Jan-14	Jan-13
Number of Balancing Actions (Calendar year to date)	22	41
Number of Material Breaches (Calendar year to date)	0	0
Number of Non-Material Breaches (Calendar year to date)	0	0

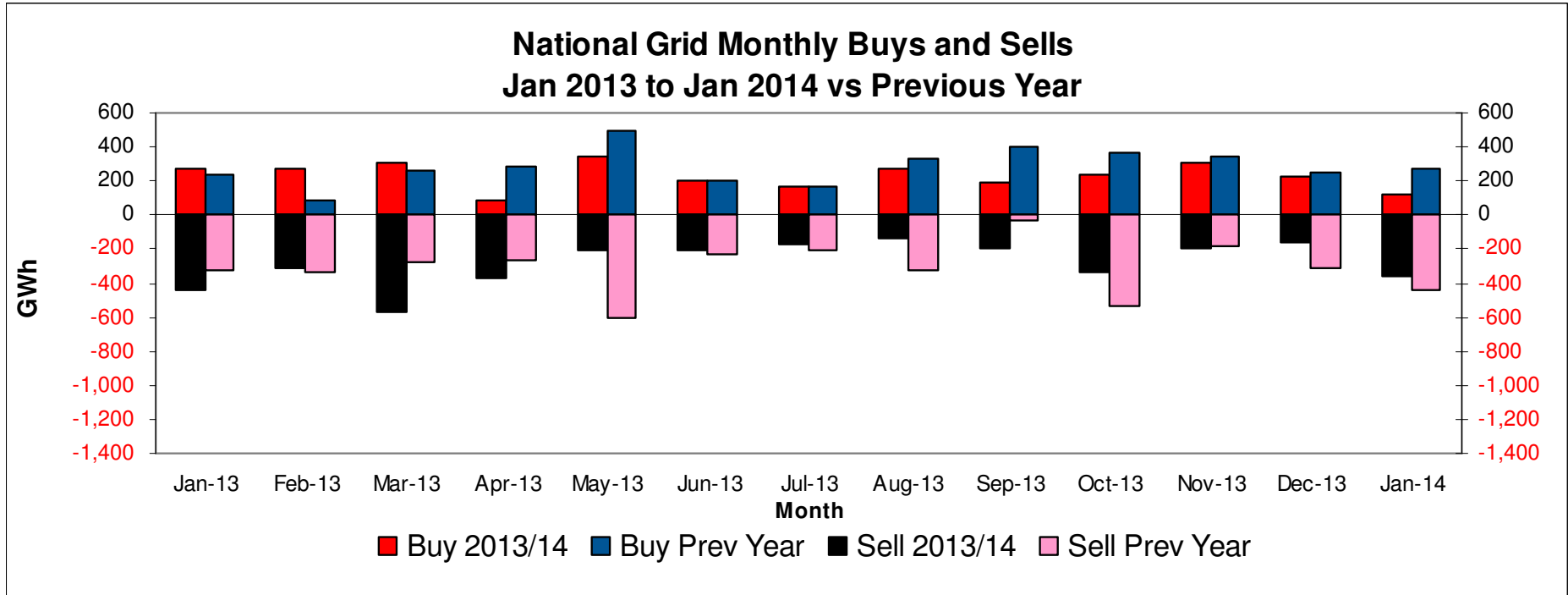
Transporter Actions and Neutrality



- Energy Balancing
- Capacity

Transporter Energy Traded on the OCM

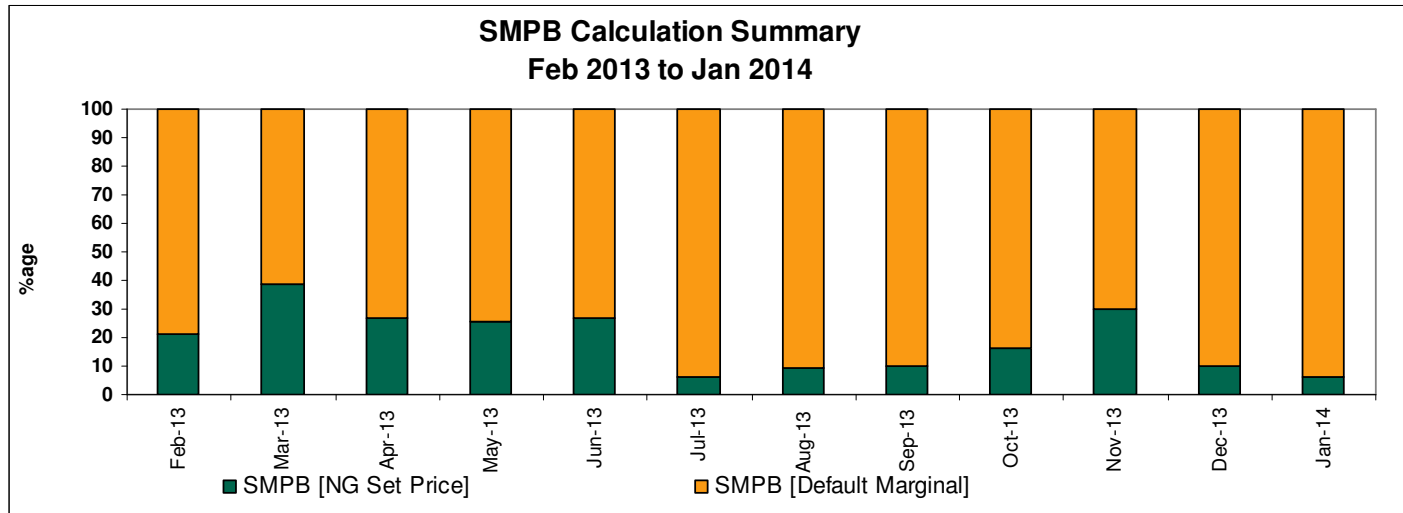
January 2013 to January 2014 Vs Previous Year



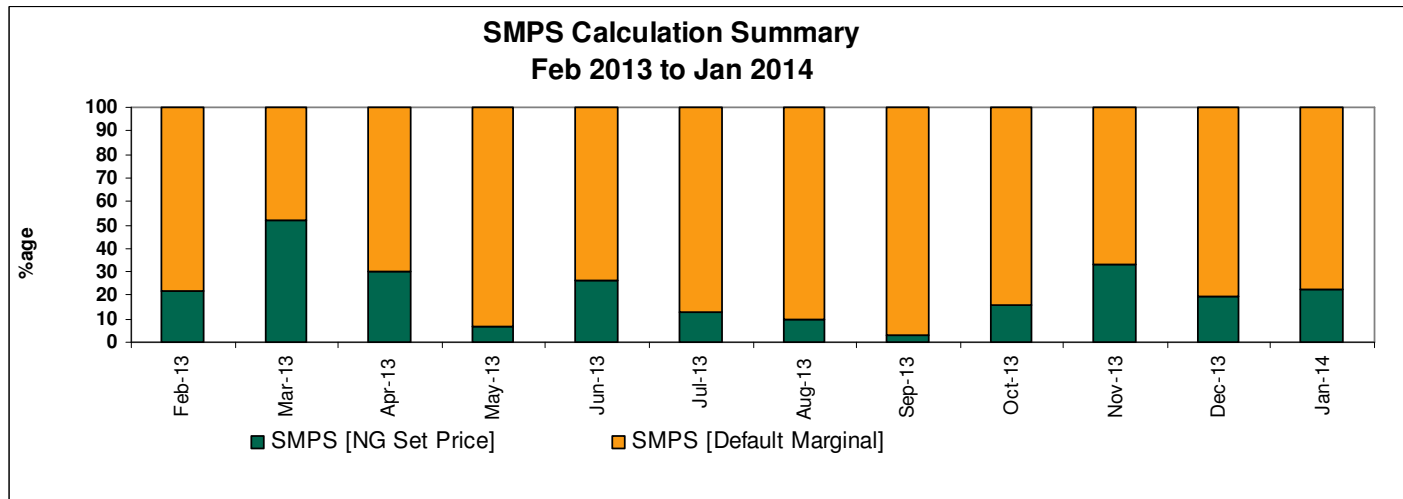
Year	Buy [GWh]	Sell [GWh]
2014 [YTD]	124	-362
Jan – Dec 13	2891	-3316

Days of Default SMP Prices

From February 2013 to January 2014



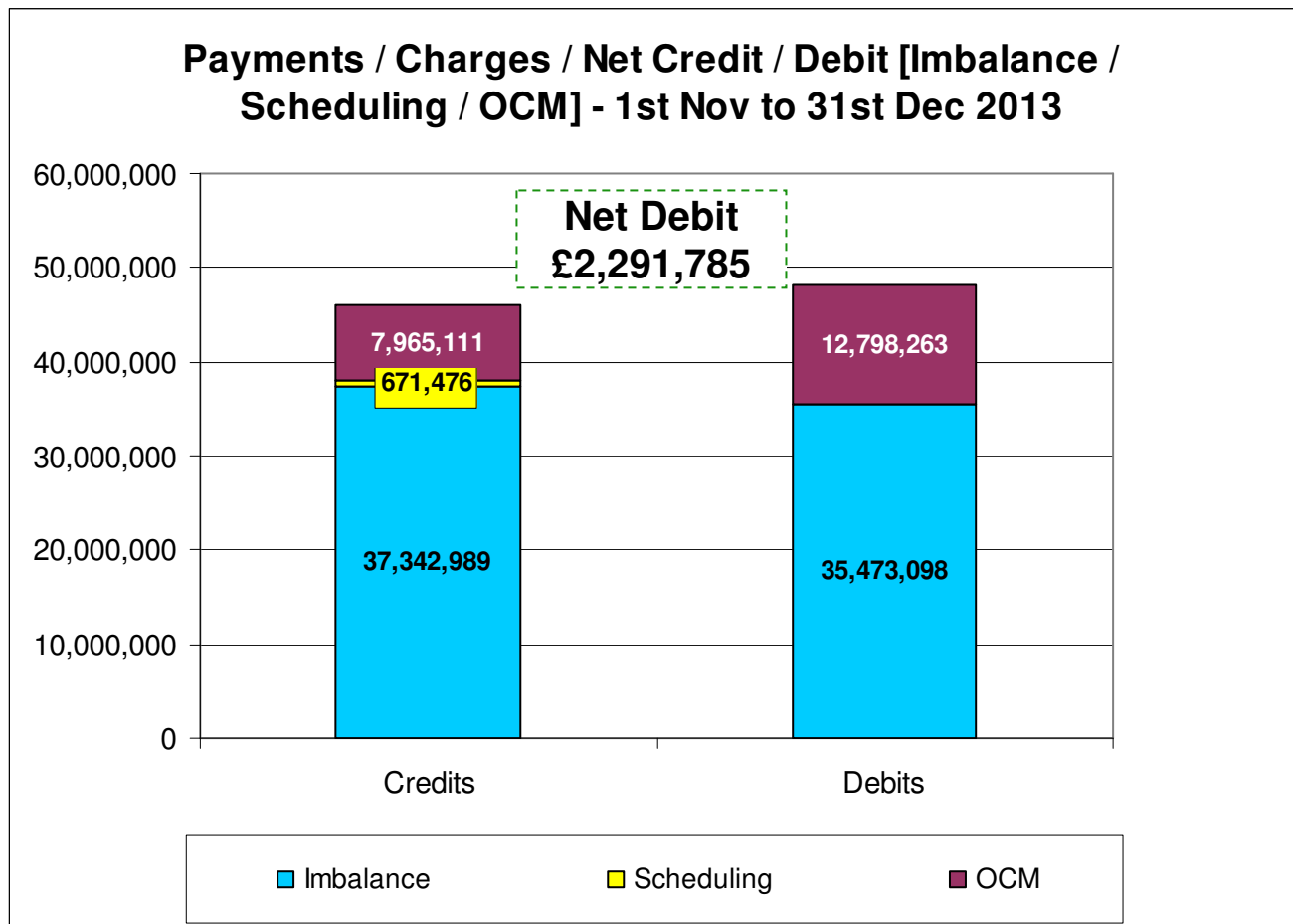
Month	SMPB	SMPS	Both
Jan 14	94%	77%	71%



Energy Balancing – Balancing Costs

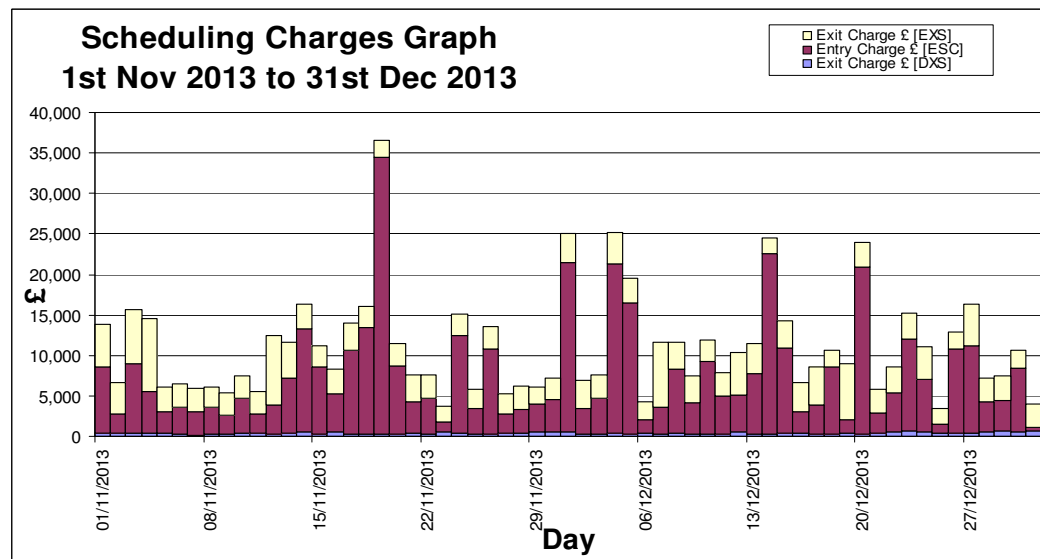
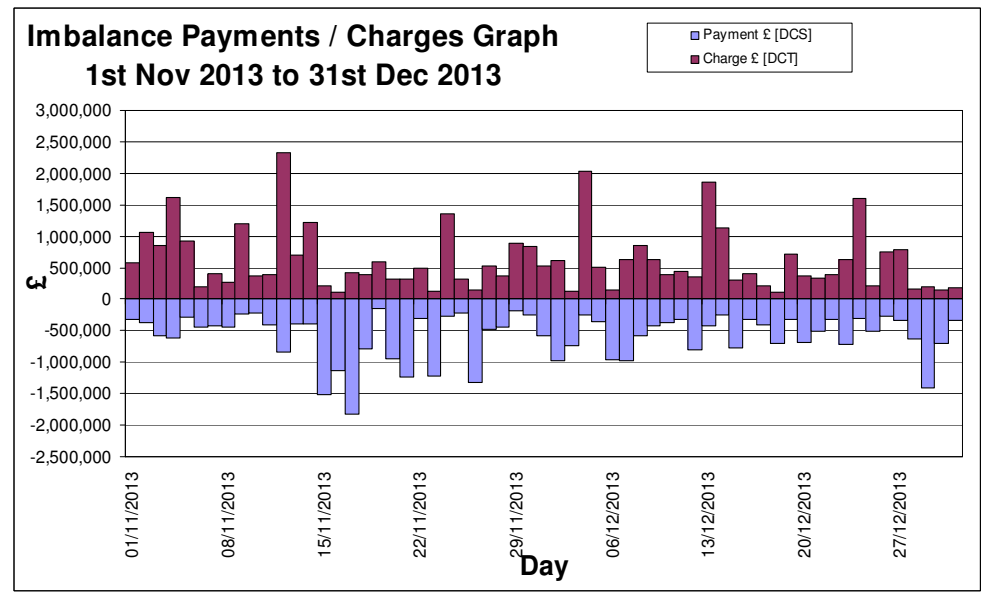
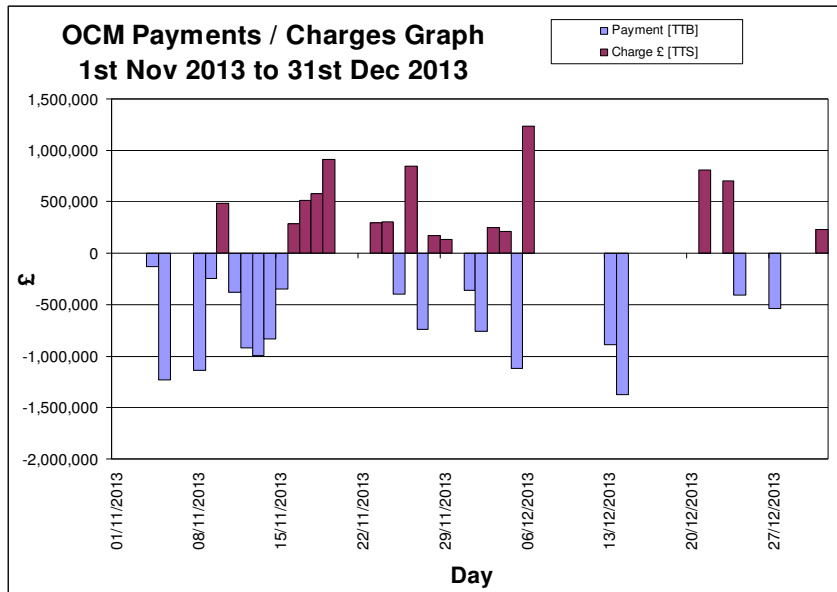
Nov - Dec 2013

Month	Imbalance		Scheduling			OCM		Balancing Costs
	Payment £ [DCS]	Charge £ [DCT]	Exit Charge £ [DXS]	Exit Charge £ [EXS]	Entry Charge £ [ESC]	Payment £ [TTB]	Charge £ [TTS]	Net £
Nov-13	-18,206,493	19,579,908	11,253	102,682	195,902	-7,361,810	4,528,511	-1,150,047
Dec-13	-17,266,606	17,763,082	13,114	107,575	240,951	-5,436,453	3,436,600	-1,141,738



Energy Balancing – Balancing Costs

Nov - Dec 2013



Capacity Neutrality

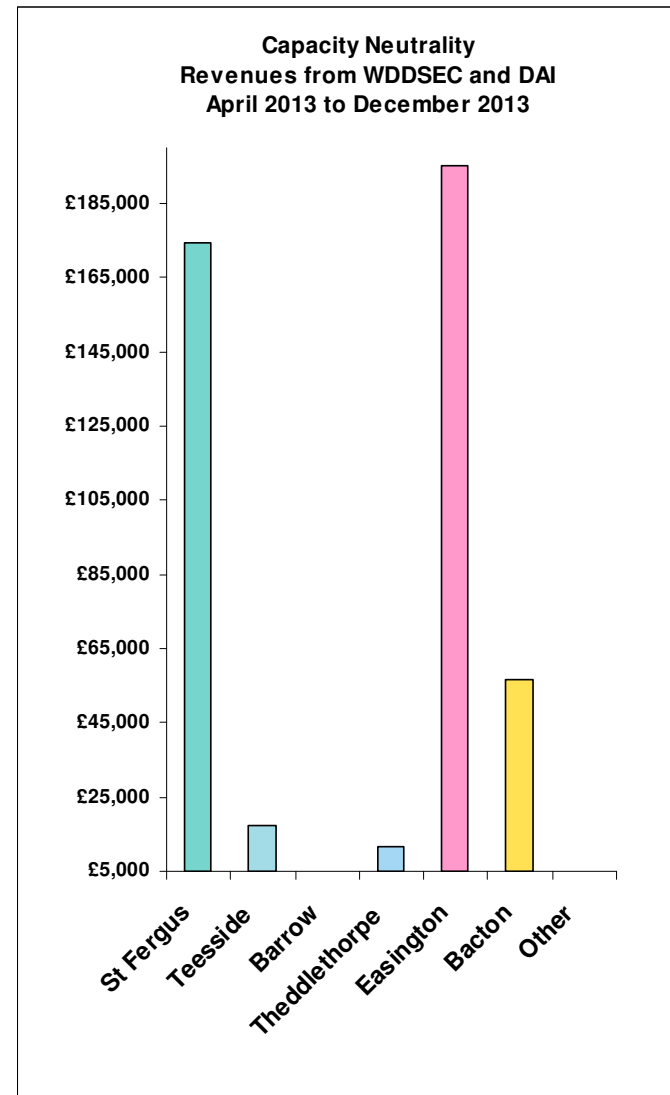
Net Cost / Revenue From 1st April 2013 to 31st December 2013

	Revenue/Costs
WDDSEC/DAI Entry Capacity Revenue	-£454,856
Total Entry Constraint Management Operational Costs	£0
Entry Capacity Overrun Revenue	-£110,940
Non-Obligated Sales Revenue (Entry only)	-£85,537
Revenue from Locational Sells and PRI Charges	£0
Net Revenue	-£651,333

Capacity Neutrality

Revenues from WDDSEC and DAI
From 1st April 2013 to 31st December 2013

ST FERGUS	-£174,309
TEESSIDE	-£17,166
BARROW	£0
THEDDLETHORPE	-£11,767
EASINGTON	-£195,189
BACTON	-£56,411
OTHER	-£13
Net Revenue	-£454,856



Capacity Neutrality

Revenues from Entry Cap Overruns and Non-Obligated Sales,
and Locational Sells and PRI Charges.

Totals From 1st April 2013 to 31st December 2013



Month	Entry Cap Overrun Revenue	Non-obligated sales revenue (entry)
Apr-13	-£4,972	-£175
May-13	-£7,376	-
Jun-13	-£33,996	-
Jul-13	-£16,257	-
Aug-13	-£6,080	-
Sep-13	-£11,538	-
Oct-13	-£5,355	-£28,755
Nov-13	-£22,002	-£27,943
Dec-13	-£3,364	-£28,665
Jan-14	-	-
Feb-14	-	-
Mar-14	-	-
Total	-£110,940 (FY13-14)	-£85,537 (FY13-14)

Month	Locational Sells and PRI charges revenue
Apr-13	£0
May-13	£0
Jun-13	£0
Jul-13	£0
Aug-13	£0
Sep-13	£0
Oct-13	£0
Nov-13	£0
Dec-13	£0
Jan-14	-
Feb-14	-
Mar-14	-
Total	£0 (FY13/14)

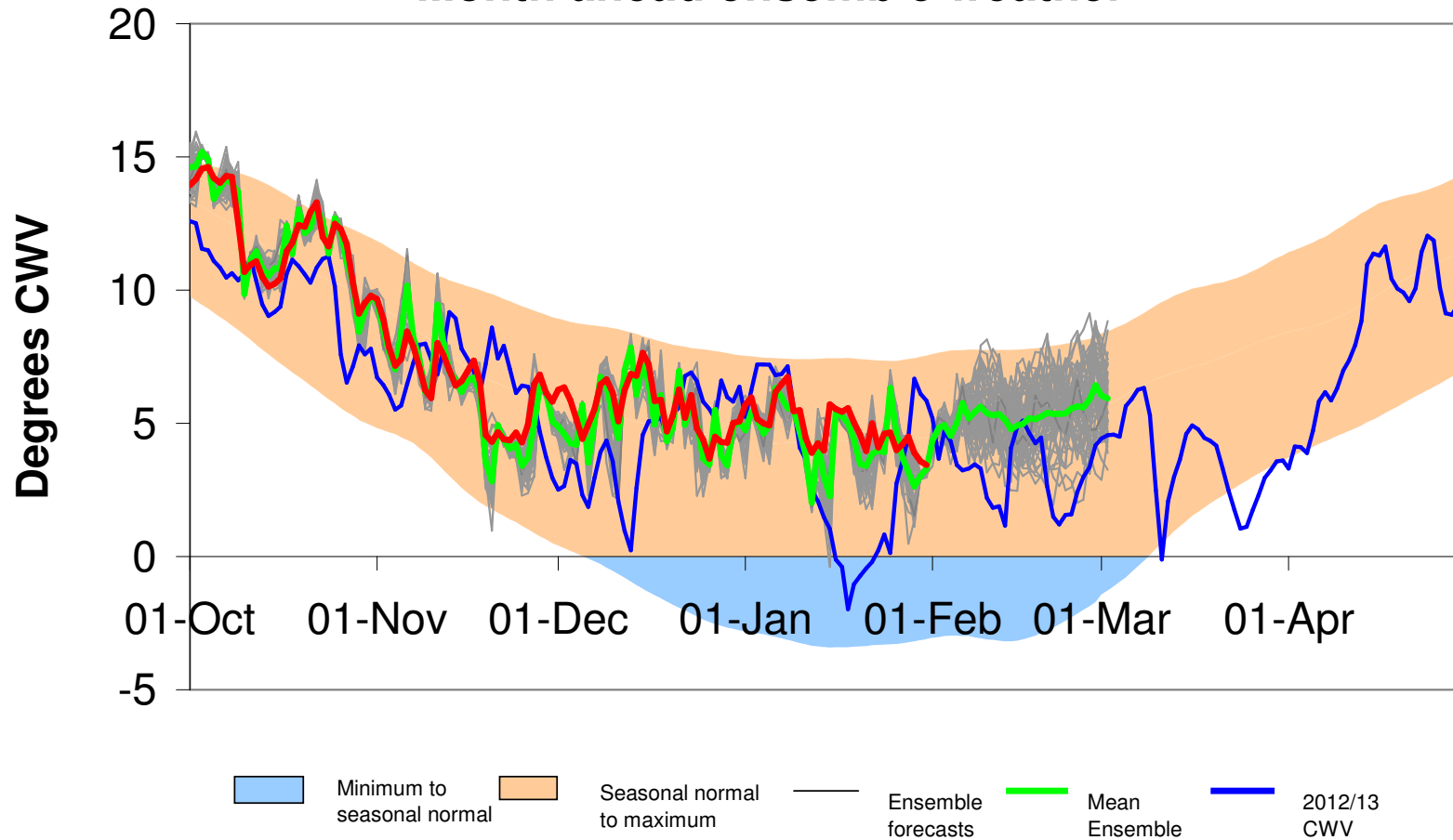
Operational Overview



National Composite Weather

October 2013 to Feb 2014 vs. Historical Range

Month ahead ensemble weather

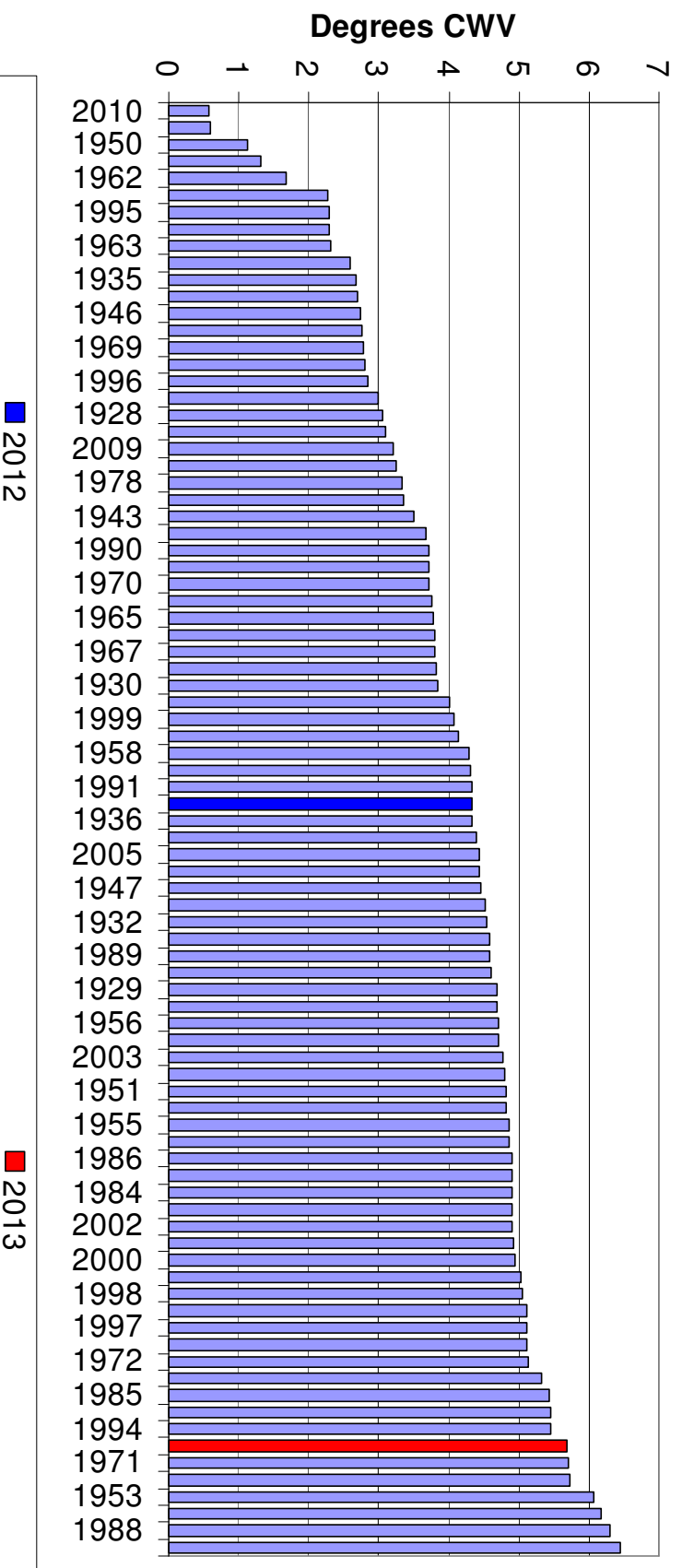


Mean Composite Weather Variables

nationalgrid

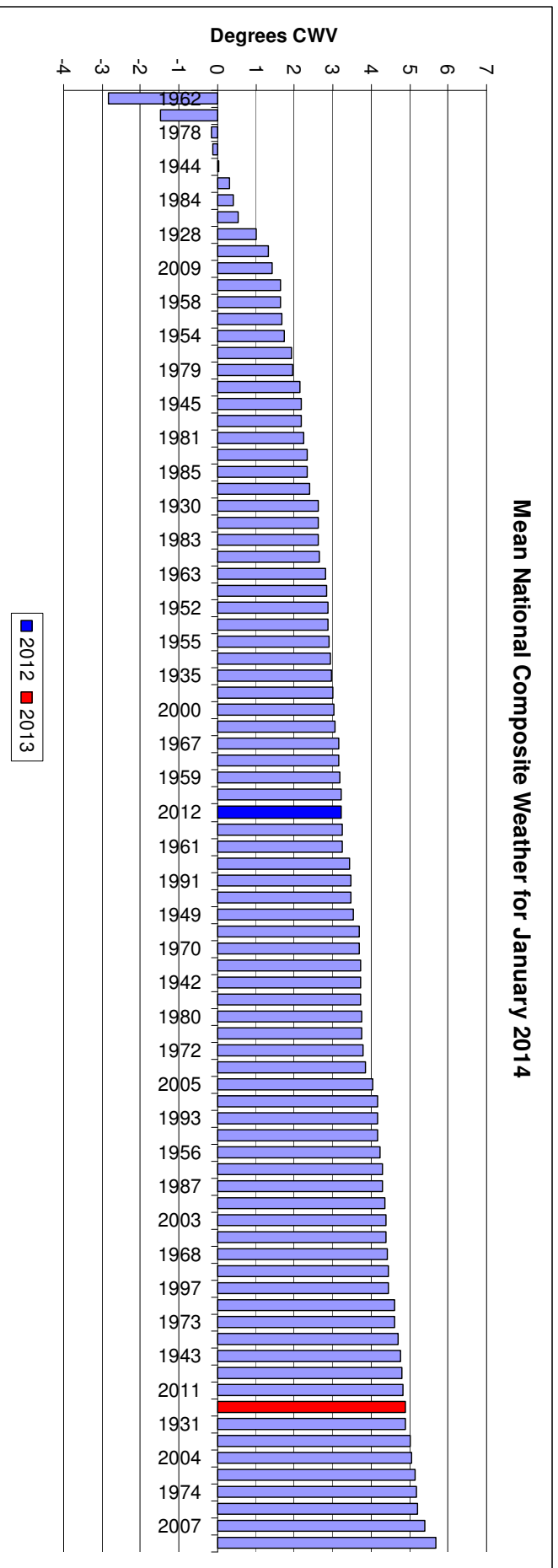
December 2013 vs. Previous Yrs

Mean National Composite Weather for December 2013



Mean Composite Weather Variables

January 2014 vs. Previous Yrs



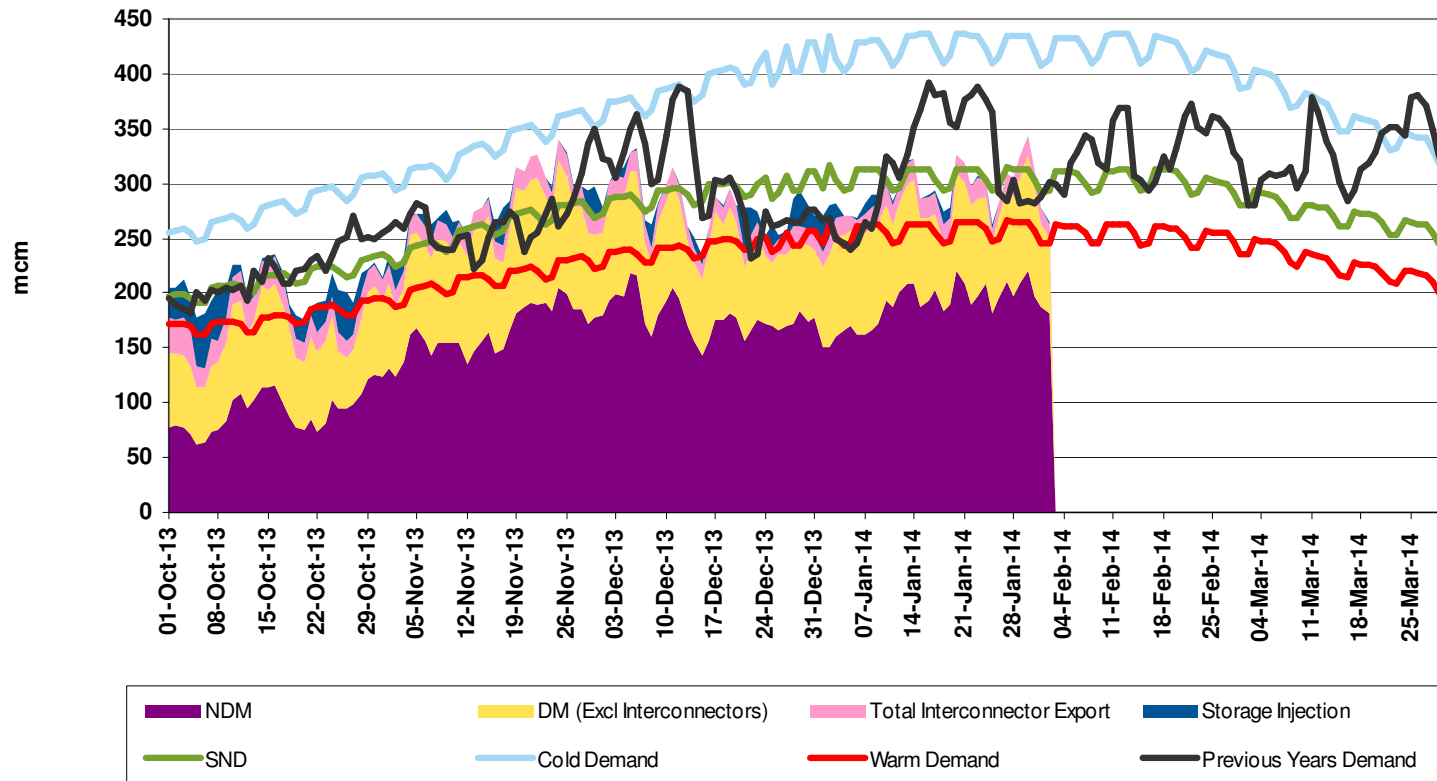
Demands



Gas Demand Breakdown

1st Oct 2013 to 2nd Feb 2014 vs Previous Year

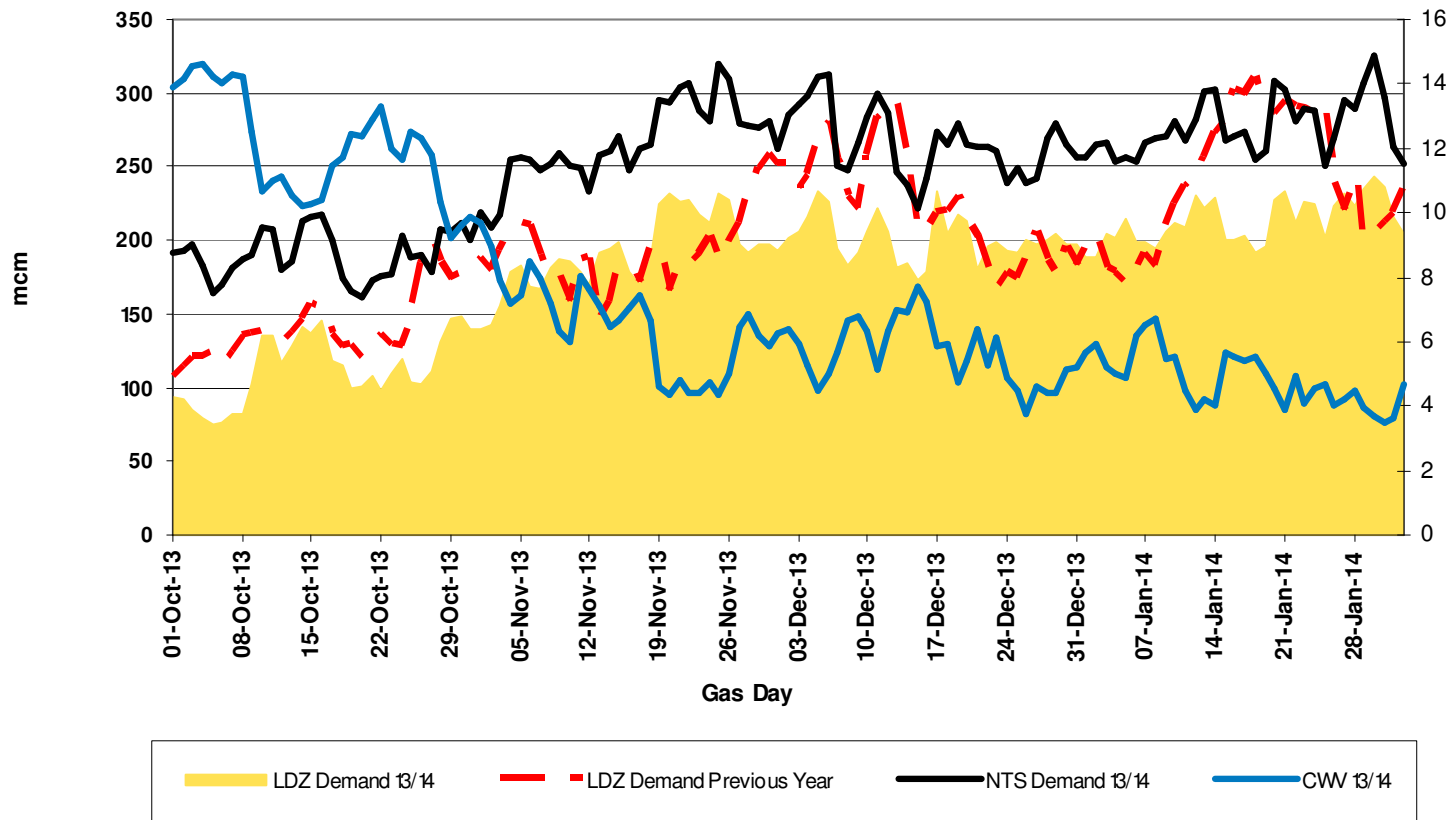
Gas Demand Breakdown
1st Oct 2013 to 2nd February 2014 vs Previous Year



LDZ Demand

1st October 2013 to 2nd February 2014

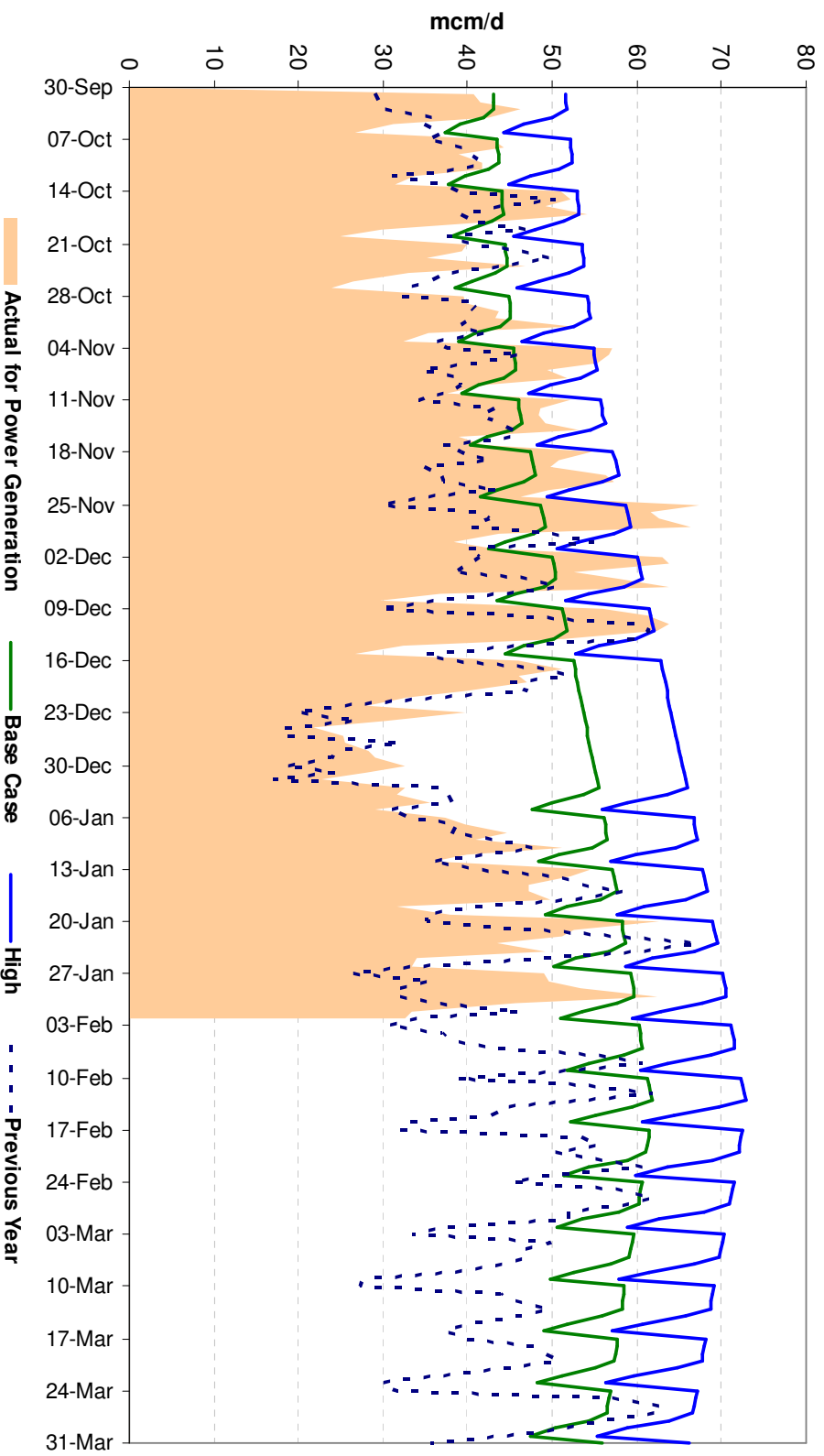
Gas Demand Breakdown [LDZ 2013/14 vs Previous Year] vs NTS Demand /
CWW's
1st Oct 2013 to 2nd Feb 2014



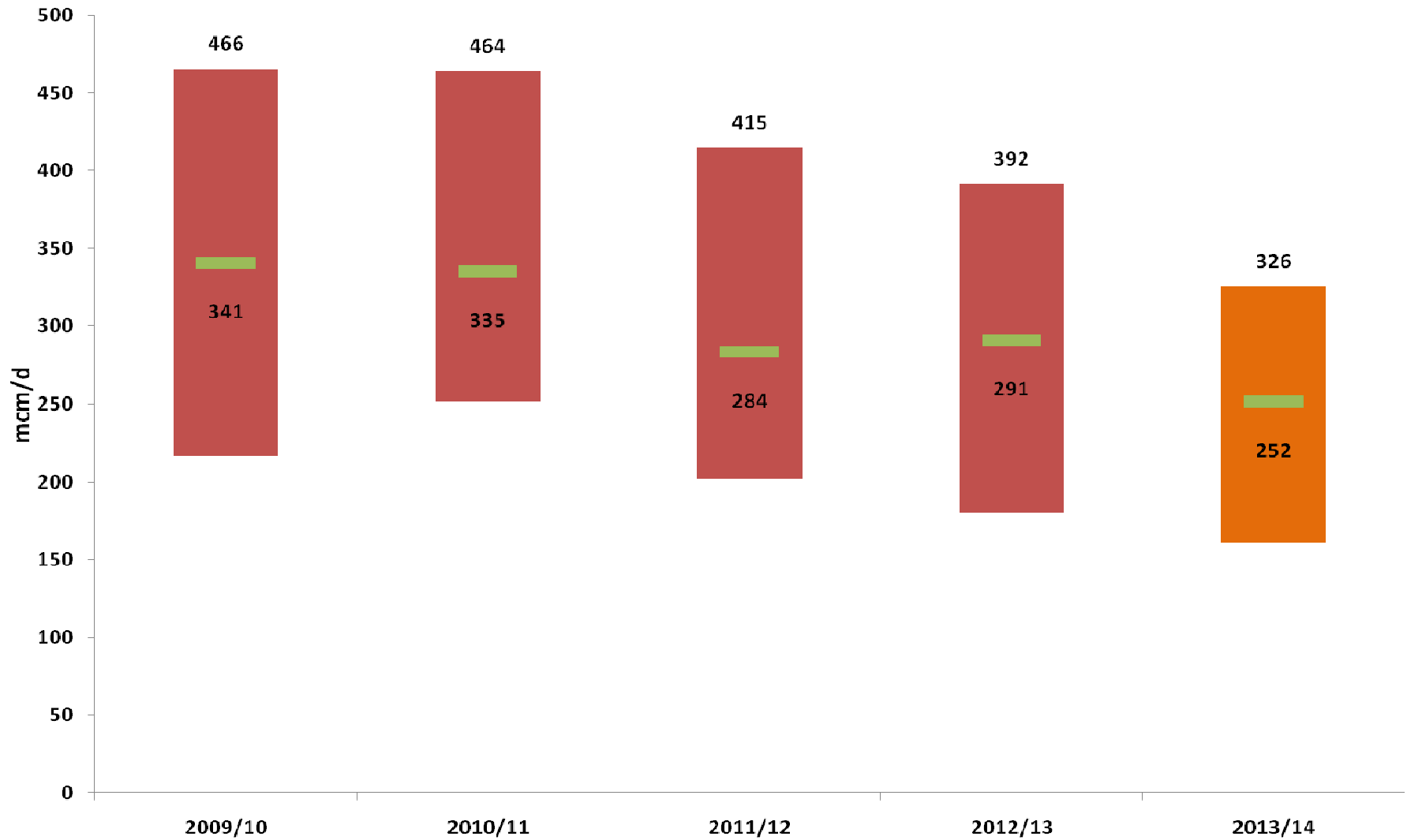
Power Generation

October 2013 to February 2014

Gas Consumption for Power Generation



Depressed Demand this Winter



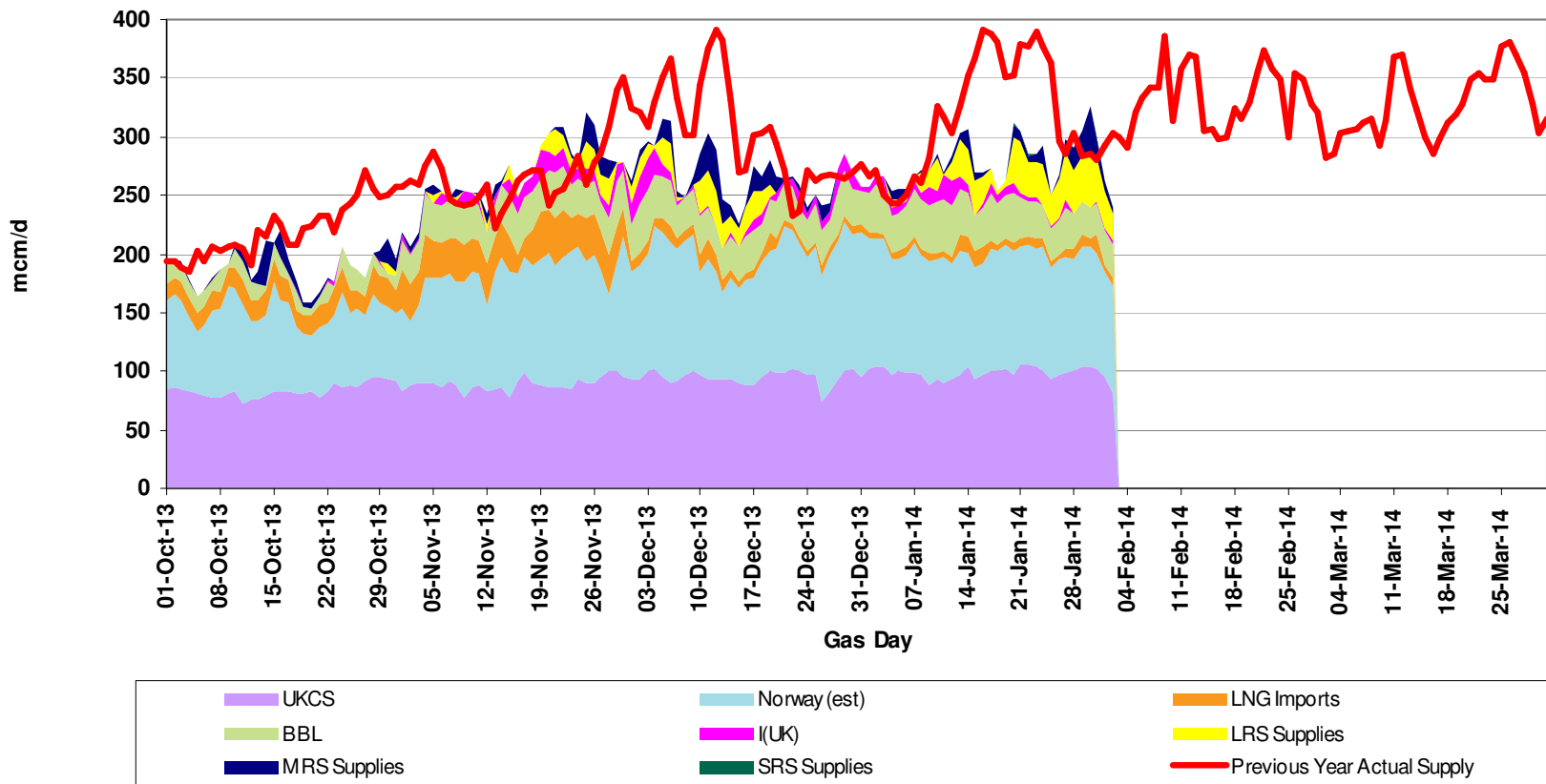
Supplies



Gas Supply Breakdown

1st October 2013 to 2nd February 2014

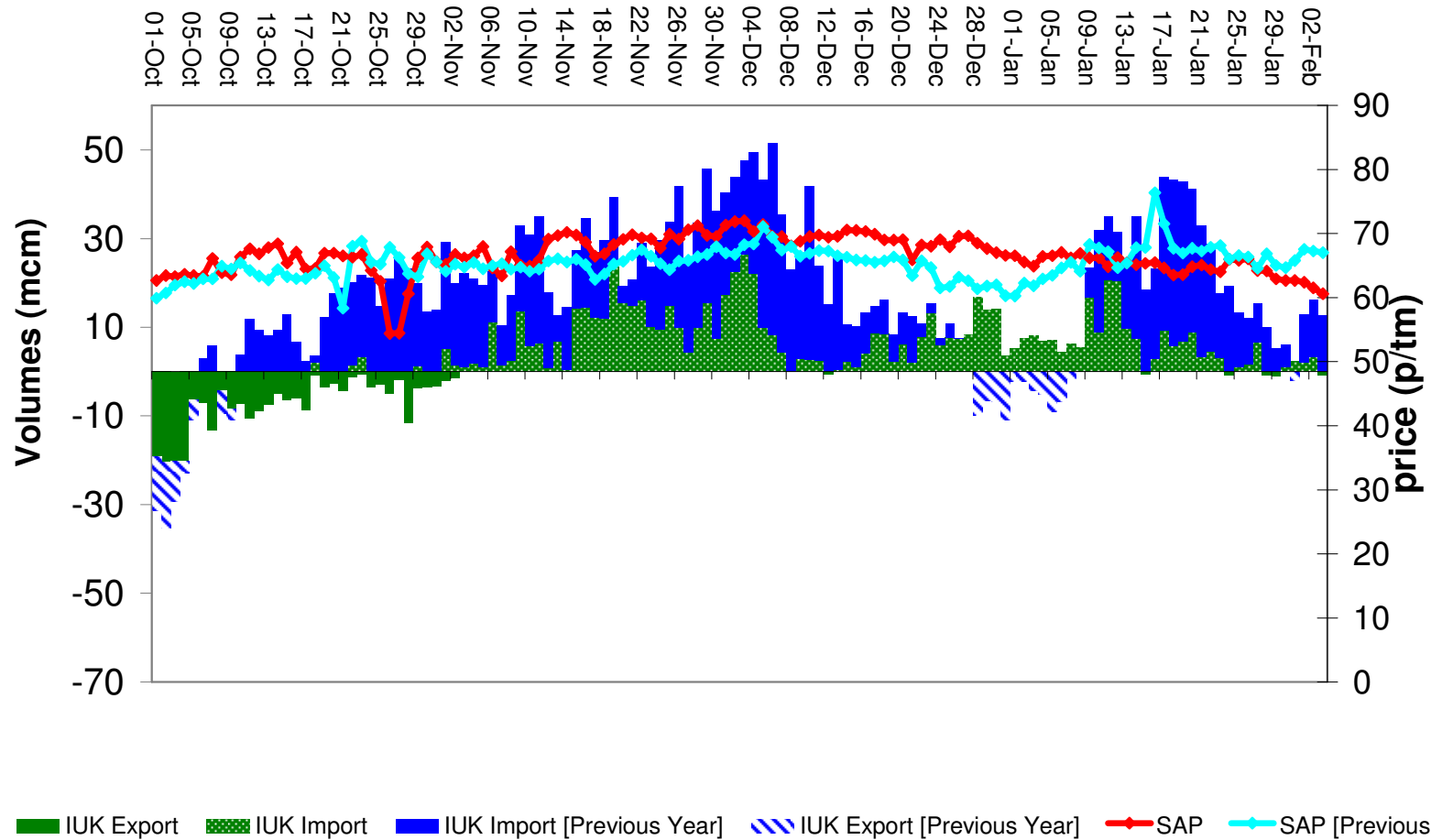
Gas Supply Breakdown
1st October 2013 to 2nd February 2014 vs Previous Year



Gas Supply Breakdown – IUK

1st October 2013 to 3rd February 2014

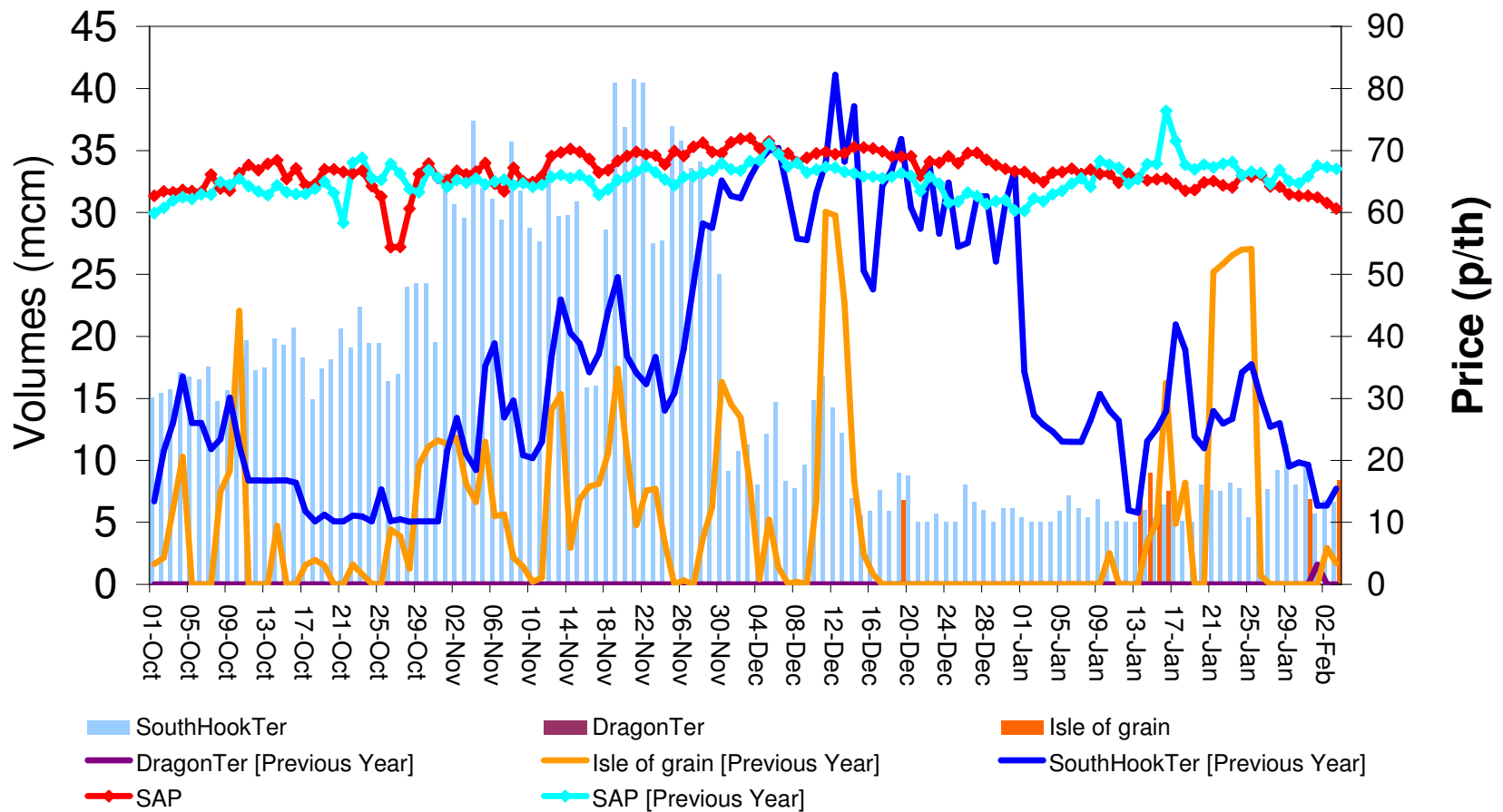
IUK Export / Import volumes Oct 2013 - Feb 2014 vs Previous Year / SAP



Gas Supply Breakdown – LNG

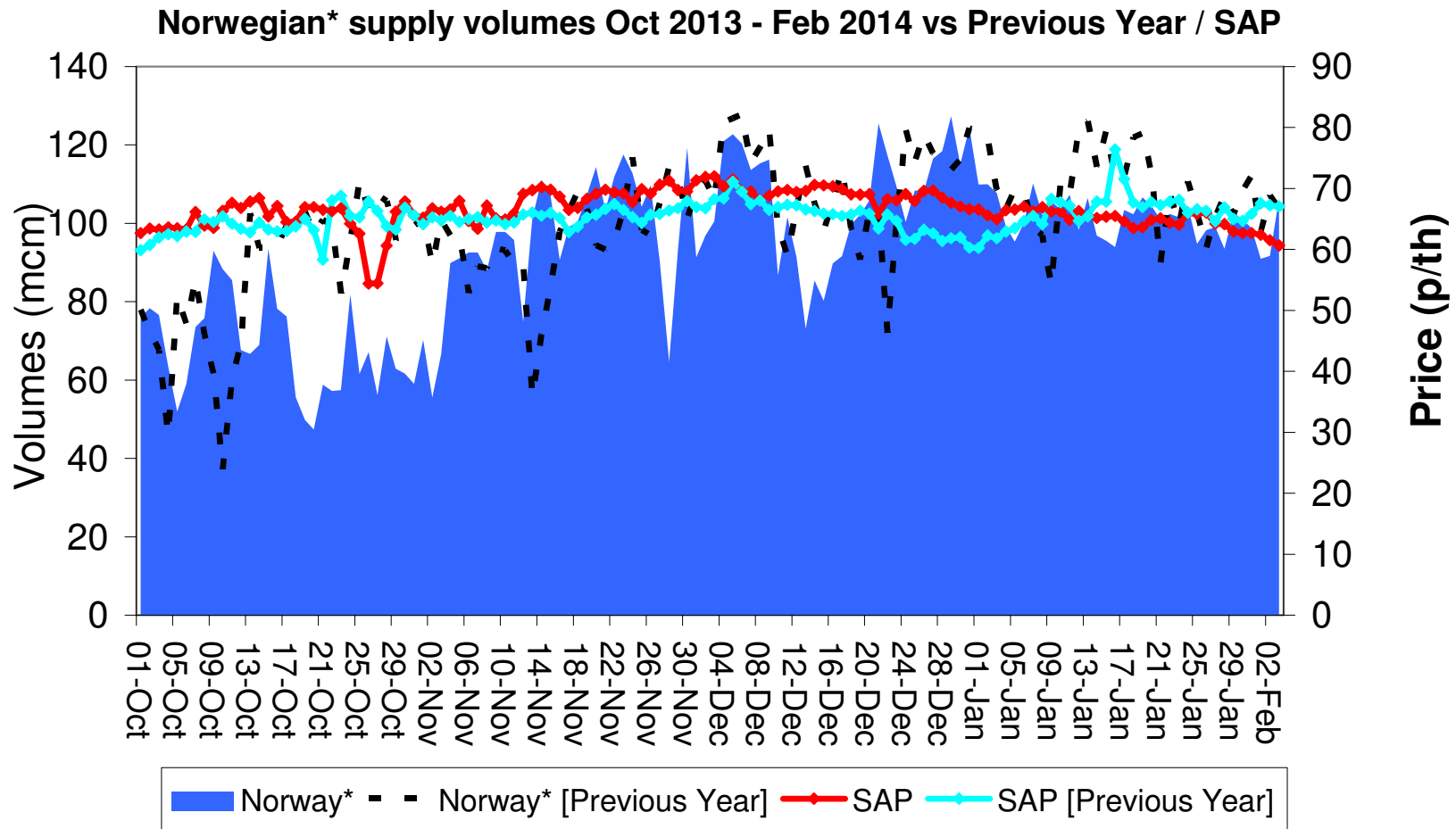
1st October 2013 to 3rd February 2014

LNG terminal flows Oct 2013 - Feb 2014 vs Previous Year / SAP



Gas Supply Breakdown – Norway

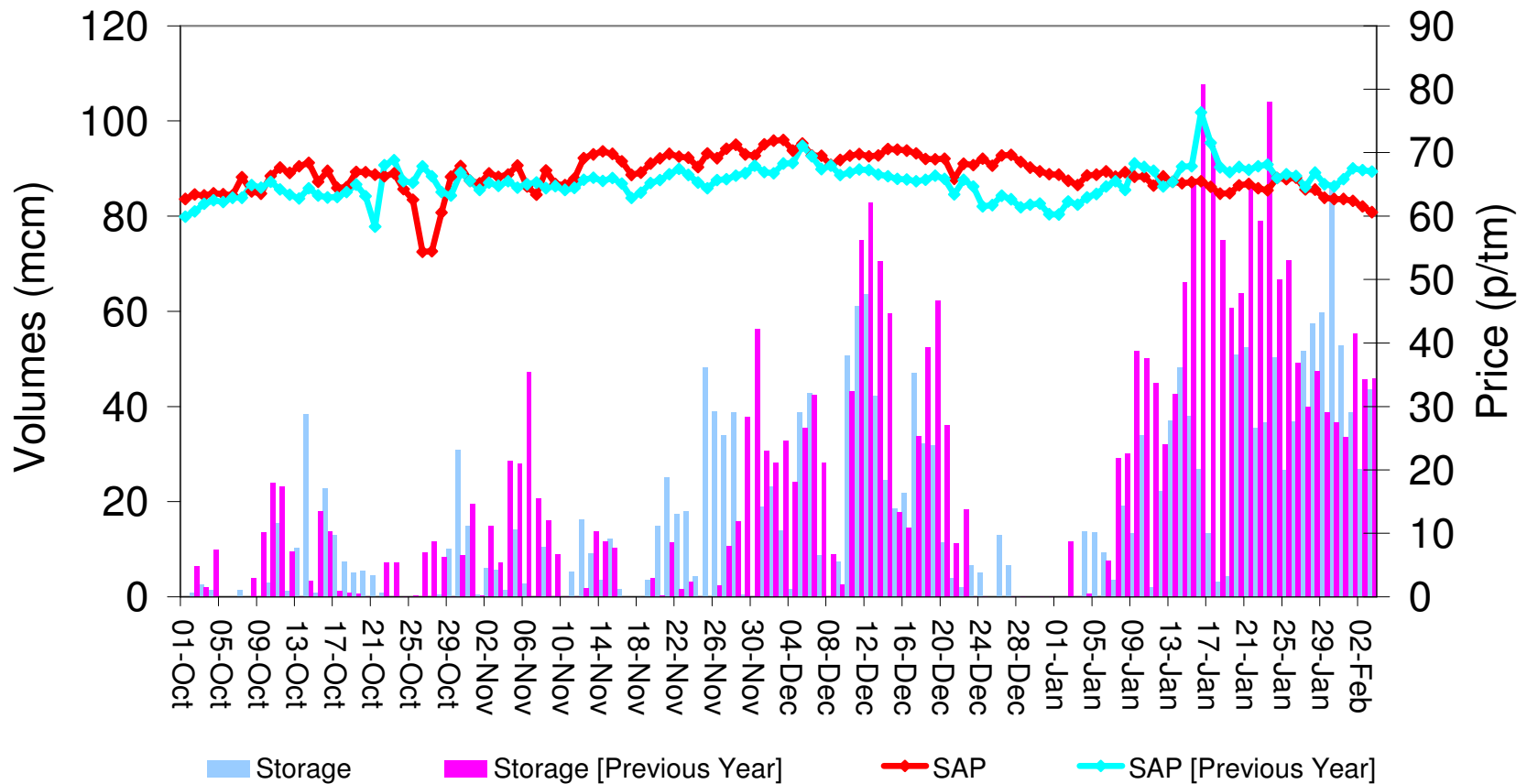
1st October 2013 to 3rd February 2014



Gas Supply Breakdown – Storage

1st October 2013 to 3rd February 2014

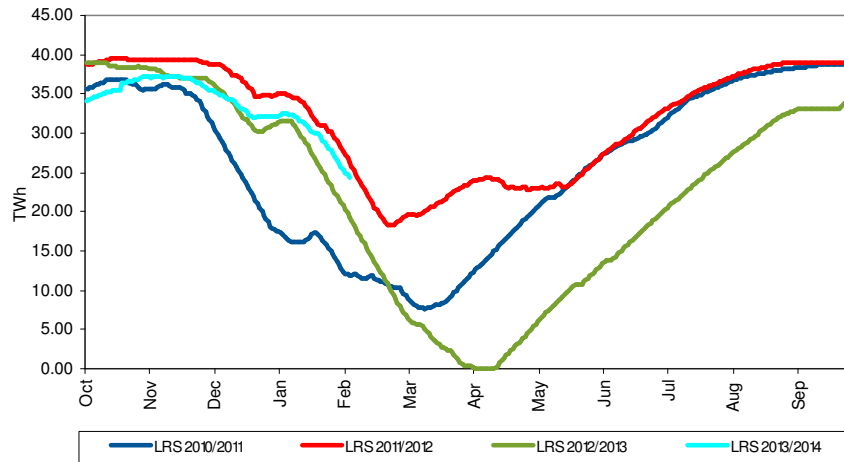
Storage flows Oct 2013 - Feb 2014 vs Previous Year / SAP



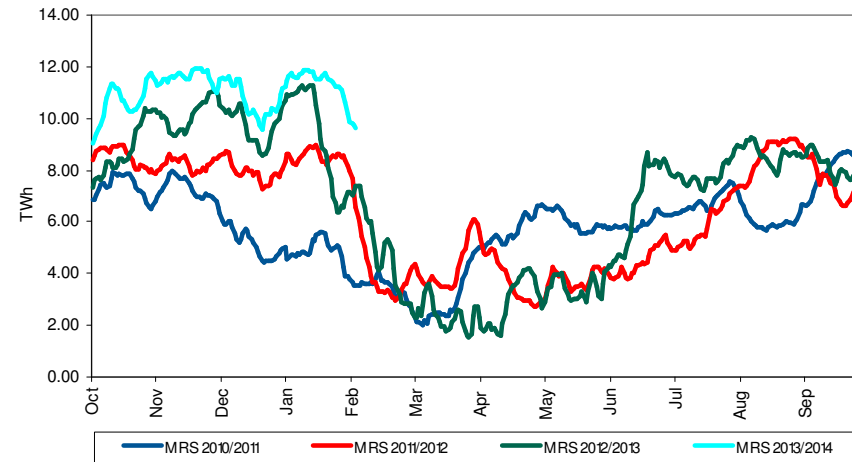
Storage Stocks - UK

1st Oct 2013 to 4th February 2014 Vs Previous Years

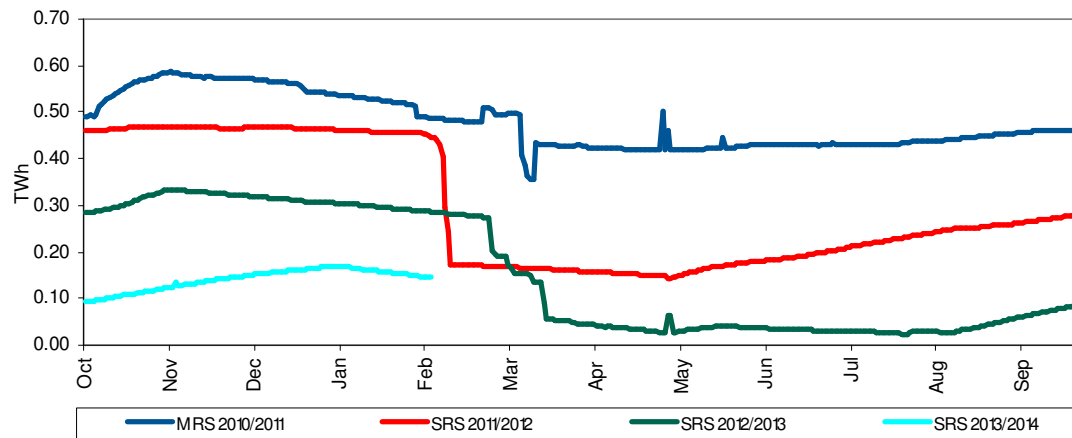
LRS Stocks



MRS Stocks

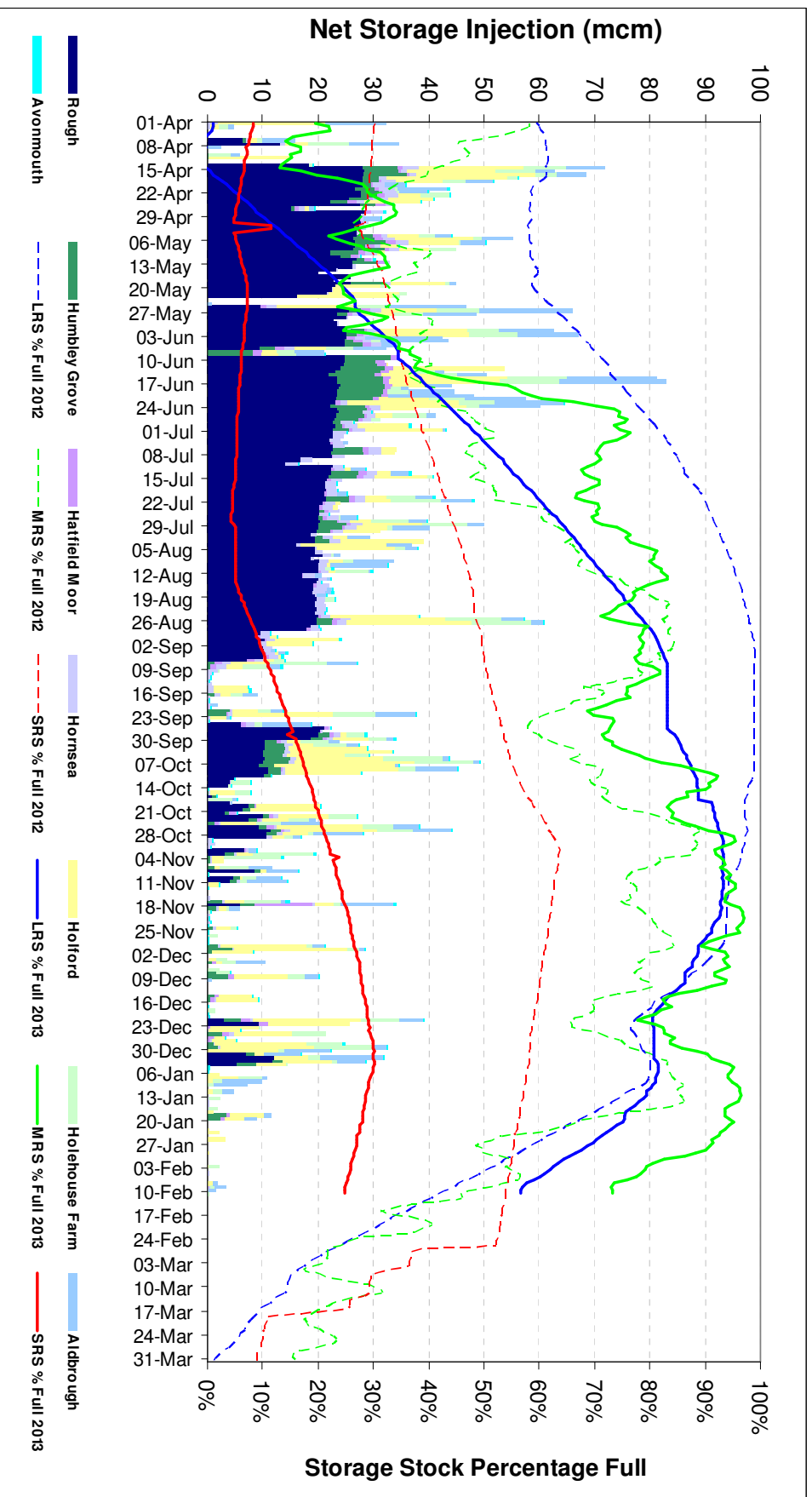


SRS Stocks



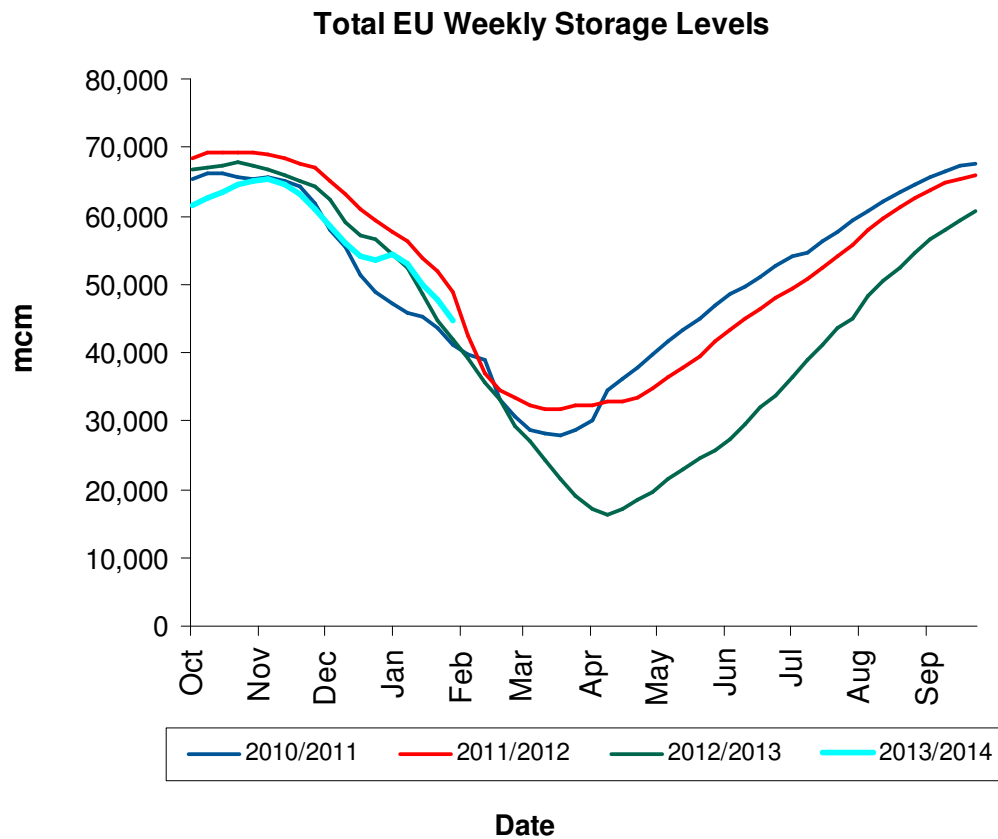
2013/14 Reflection

Storage Stocks



Storage Stocks - EU

From 1st Oct 2013 to 1st February 2014 vs. Previous Years

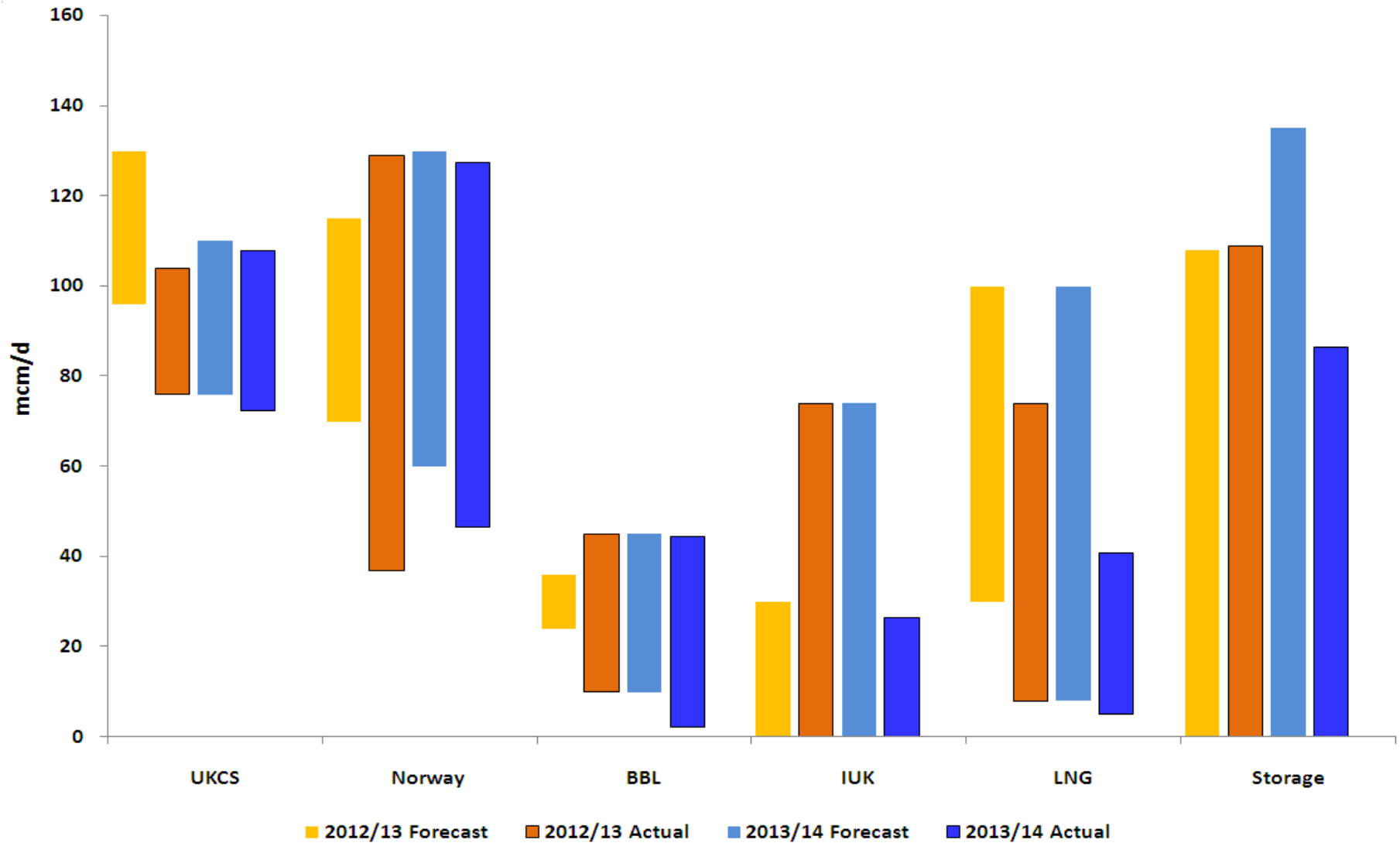


Storage Data for Wednesday 05-02-2014

Facility	Storage	Injection	Withdrawal	% Full
▶ Austria	1,439.88	0.00	15.92	39.71%
▶ Belgium	403.69	0.00	2.71	57.26%
▶ Bulgaria	391.88	0.00	0.00	71.25%
▶ Croatia	-	-	-	-
▶ Czech Republic	1,389.93	0.00	18.89	51.56%
▶ Denmark	703.20	0.10	6.70	69.62%
▶ France	5,265.38	0.00	13.62	42.26%
▶ Germany	14,143.87	2.18	37.35	64.65%
▶ Hungary	1,656.20	0.00	18.80	26.84%
▶ Ireland	-	-	-	-
▶ Italy	10,071.11	0.00	86.80	60.68%
▶ Latvia	-	-	-	-
▶ Lithuania	-	-	-	-
▶ The Netherlands	414.93	0.00	0.00	81.36%
▶ Poland	1,435.90	0.00	4.80	78.99%
▶ Portugal	118.02	0.00	0.02	47.80%
▶ Romania	-	-	-	-
▶ Slovakia	1,450.16	0.00	12.84	50.53%
▶ Spain	1,729.80	0.00	5.06	64.09%
▶ Sweden	-	-	-	-
▶ UK	3,228.00	0.00	42.00	67.87%
TOTAL EU 28	43,841.96	2.28	265.50	55.79%

Note: AGSI+ are no longer publishing aggregated data on hub level.

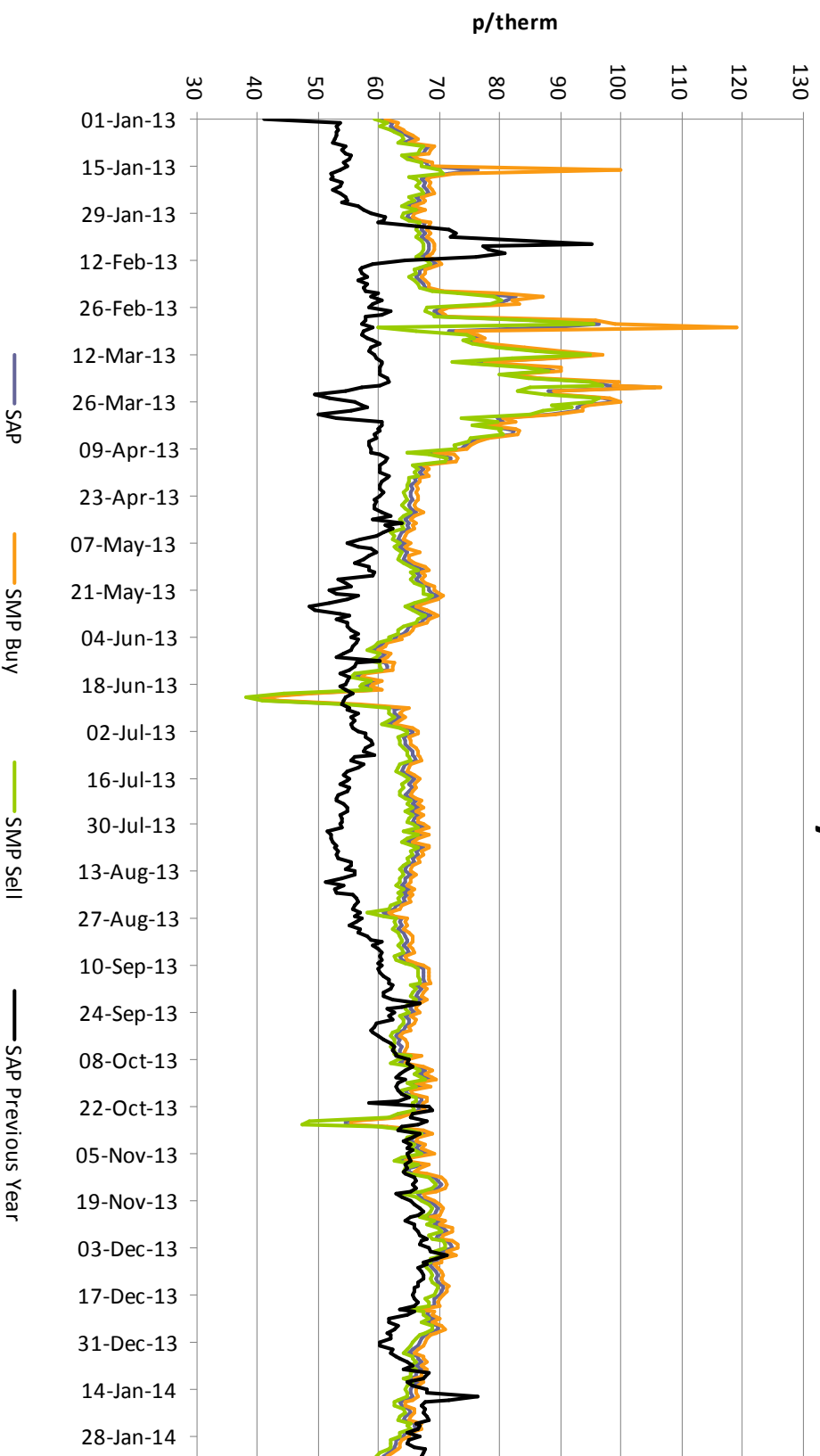
Gas Supply comparison – Winter 2012/13 vs 2013/14



UK Gas Prices

1st Jan 2013 to 4th Feb 2014 Vs Previous Years

System Prices
1st Jan 2013 to 4th February 2014 Vs Previous Years SAP



What Operational Issues Affected Users?

