

THE LABELLING OF GAS SERVICES

INTRODUCTION

Compliance with this Engineering Bulletin will ensure that the obligations for the labelling of gas services as set out in the Gas Safety (Installation and Use) Regulations 1998 are met. It will also mean that where labelled, Transco provides information for any Ofgem Approved Meter Installer (OAMI) or other persons who may work on the system downstream of the emergency control valve.

This bulletin supports the Transco MPRN allocation process, which is detailed in the Transco document “Meter Point Reference Number Allocation process phase 1 Utility Infrastructure providers.”

1. SCOPE

This bulletin sets out new requirements for the labelling of new gas services by Utility Infrastructure Providers where it is intended that Transco adopt the service.

This bulletin does not amend any requirements for the labelling of meter installations.

2. REFERENCES

This bulletin supplements both the advice given in HSE Approved Code of Practice and Guidance publication No.L56 “Safety in the installation and use of gas systems and appliances – The Gas Safety (Installation & Use) Regulations 1998” and the requirements of the following documents, and unless otherwise specified the latest editions of these documents apply, including all addenda and revisions:

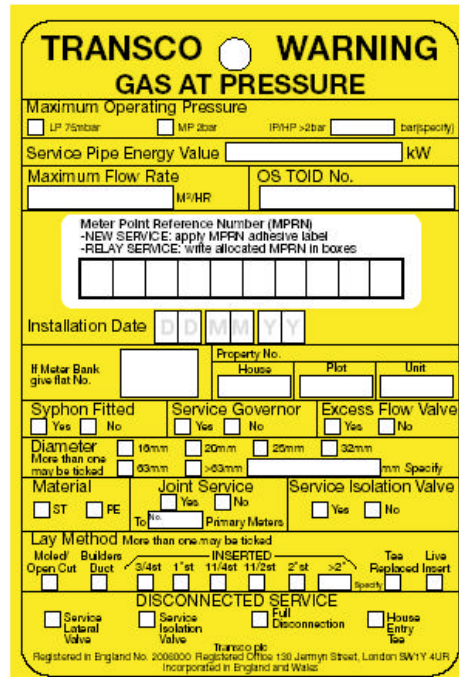
| | |
|-----------------------|--|
| Transco Guidance Note | Standard service termination details for all low pressure services designed for flows up to 821 cubic metres per hour (8,894 KW) |
| IGE/TD/4 | Gas Services Edition 3 1994 |

3. NEW LABELS

To meet statutory and business requirements for the labelling of gas services, new labels have been developed. The details of these labels are as follows:

a) **An Emergency Control Valve and Service Information Label.**

A sample of the label is shown below and the requirements for the data that should be put onto the label are set out in clause 4.1.



The service information label is available from Transco’s Print managers reference No. B608.

b) Meter Point Reference Number (MPRN) Label

A sample of the MPRN label is shown below.



Meter Point Reference Number labels are available from Transco’s Print managers, reference No. B965.

4. COMPLETION AND FITTING OF LABELS

4.1 EMERGENCY CONTROL VALVE AND SERVICE INFORMATION LABEL

Operatives shall complete the Service Information Label, shown in figure 1, indicating the design and construction details at the time the service is installed. The majority of information that requires input to the label can be done so using tick boxes.

The service layer shall attach the Service information Label to the service as near to the emergency control valve as possible to ensure adherence with legislative requirements using a proprietary cable tie or tether of sufficient length to allow a person to be able to read the information on the label.

The mandatory fields to be completed are as follows:

a) Maximum Operating Pressure.

For a low pressure service the Maximum Operating pressure shall be input as 75 mbar.

For a medium pressure service the Maximum Operating Pressure shall be input as 2.0 bar.

For an intermediate pressure service the Maximum Operating Pressure shall be input onto the label.

b) The Service Pipe Energy Value: is the nominal energy capacity in kW of the gas service. The service pipe energy value shall be calculated, using the service diameter and service length dimensions, by use of an appropriate gas service pipe design tool.

The design criteria to be used when calculating the energy value will be:-

- i. a pressure of 19mbar at the outlet of the emergency control valve for low pressure networks, or
- ii. the specific minimum design pressure stated for other networks.
- iii. the flow rate specifically requested by the gas shipper or developer
- iv. a Calorific Value of 39MJ/m^3 .

c) Maximum Flow Rate: is the design capacity in m^3/h of the service. The design capacity shall be calculated, using the service diameter and service length dimensions, by the use of appropriate gas service pipe design tool.

The design criteria to be used when calculating the maximum flow rate will be:-

- i. a pressure of 19mbar at the outlet of the emergency control valve for low pressure networks, or
- ii. the specific pressure stated for other networks.
- iii. the flow rate specifically requested by the gas shipper or developer
- iv. a Calorific Value of 39MJ/m^3 .

d) Meter Point Reference Number (MPRN).

Transco must hold a register of supply points and uses the MPRN to identify the point at which gas is taken from its network. The MPRN has previously been generated when a request for a meter was received but because of the increasing competitive provision of meter installations in future the MPRN will be allocated to NEW services.

For NEW services a printed label with the MPR Number and barcode shall be placed in the appropriate field on the Service Information Label in accordance with the Transco document "Meter Point Reference Number Allocation process phase 1 Utility Infrastructure providers."

e) The date of installation, of the service.

f) Property details. The flat number when there is a meter bank or house or flat number, or the plot number or unit number.

g) Construction details.

There are tick boxes to indicate:

- whether a service syphon or service governor or service excess flow valve service isolation valve has been installed.
- the diameter(s) and material.
- if the service is a joint service, and if so the number of primary meters fitted.
- whether a service isolation valve has been installed.
- the method(s) of lay.

Note: the OS TOID Number is the Ordinance Survey TOpographical IDentifier, which is a system for referencing geographical data and this field is intended for future use.

5. DATE OF IMPLEMENTATION

Labels shall be fitted to gas services from 12th August 2002 in accordance with the process detailed in Transco document “ Meter point Reference Number allocation process phase 1 Utility Infrastructure Providers”.

End of document