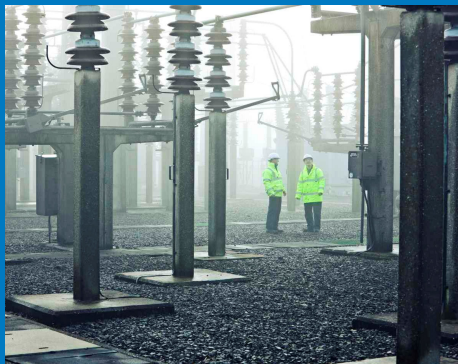


Winter Update 2010/11



3 December 2010

Highest Demands

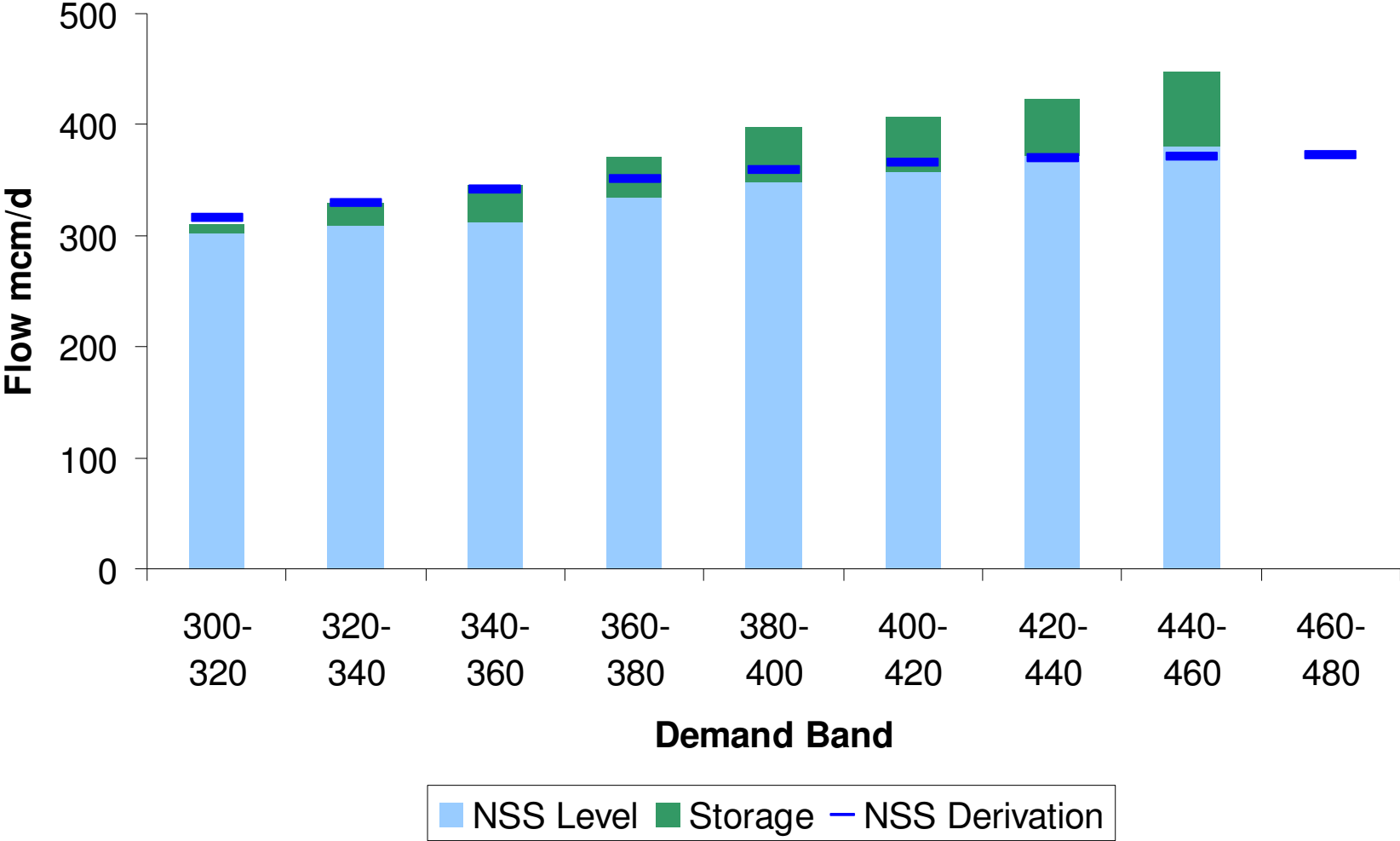
Date	Demand
08/01/10	465.46
02/12/10	456.64
01/12/10	455.19
07/01/10	454.12
07/01/03	449.02

GBA Trigger Level

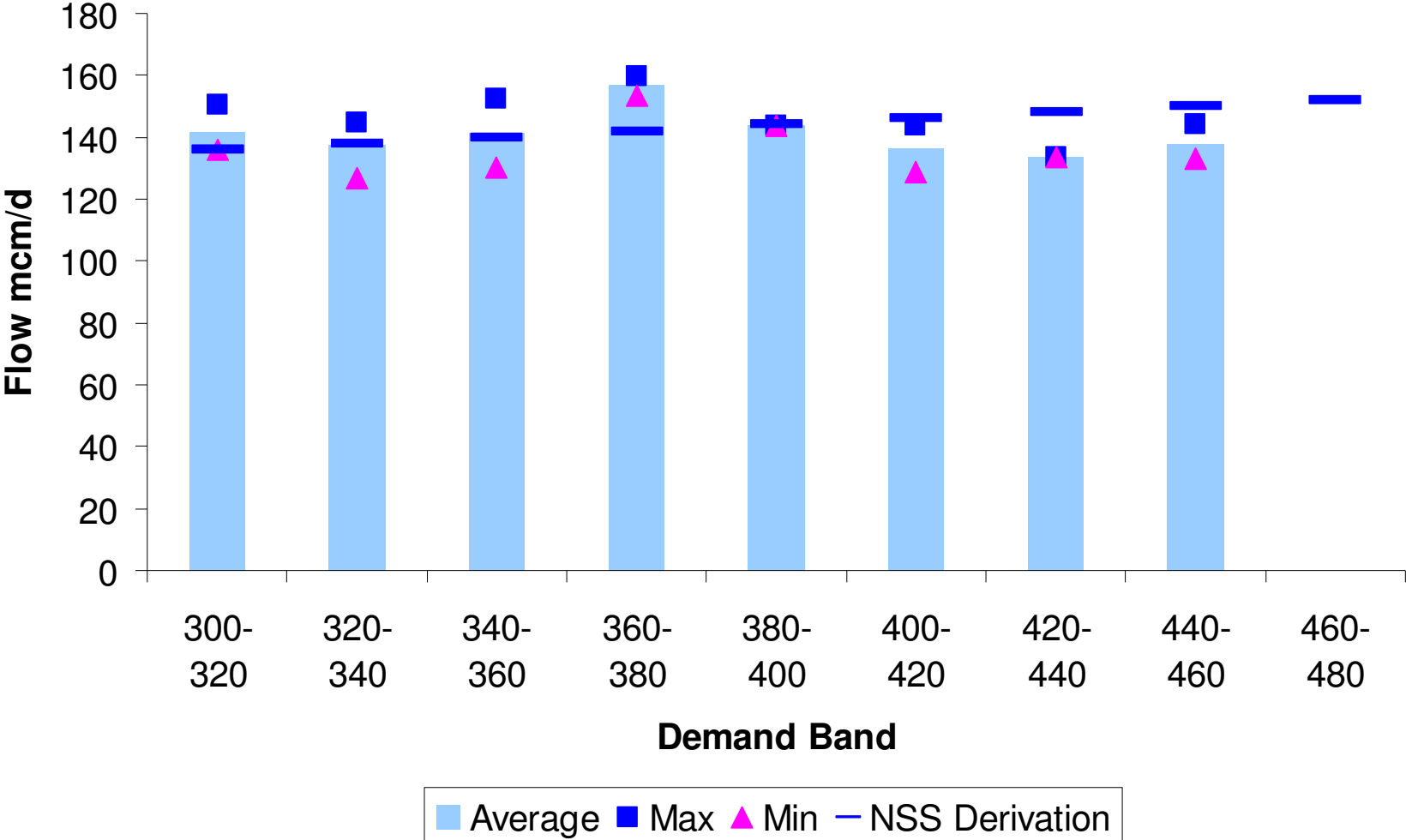
- Combination of central case assumption re NSS and storage deliverability
- Starts using winter outlook assumption for NSS
- NSS reviewed monthly in light of experience
- Storage changes daily based on stock levels

- Monthly review?

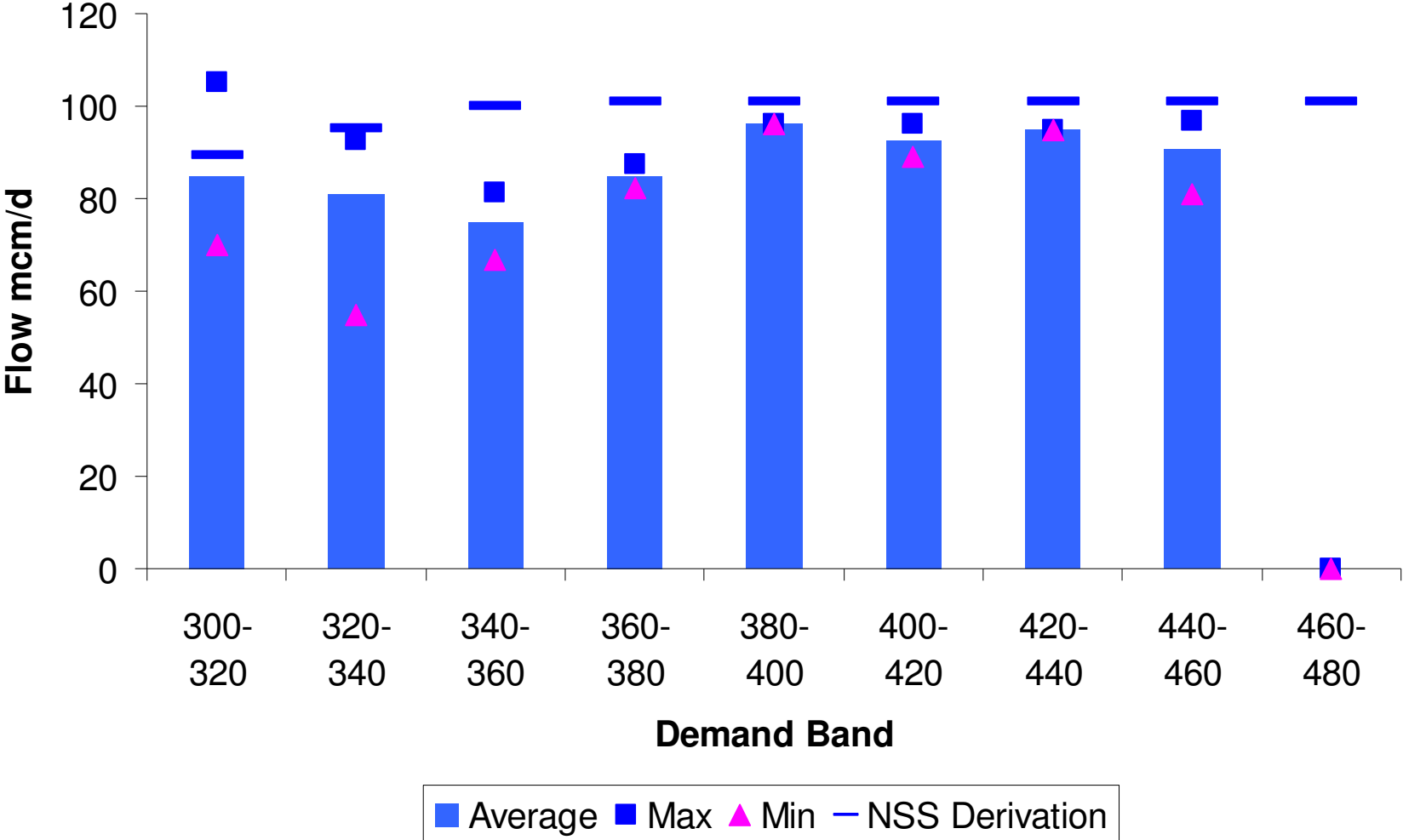
Average Supplies



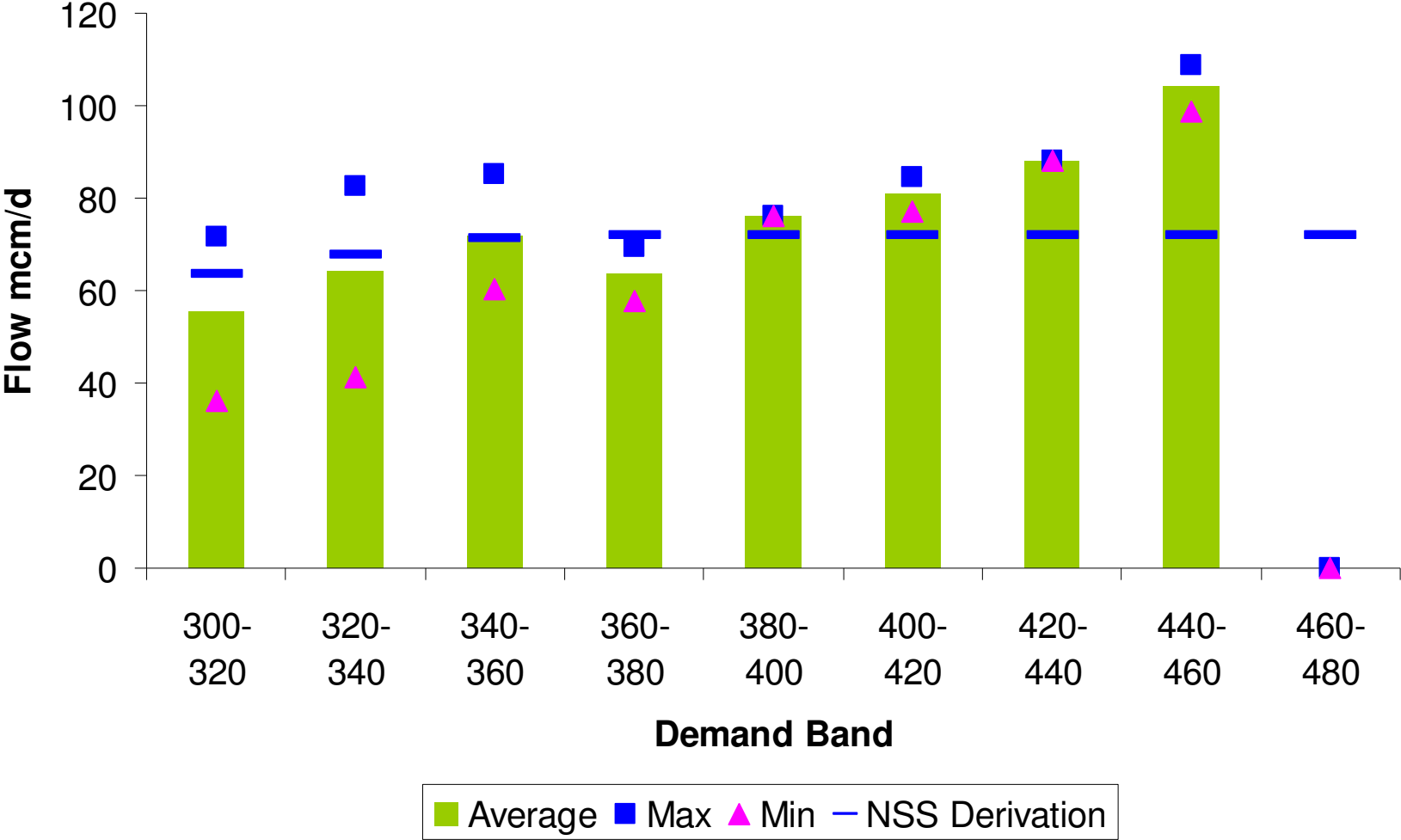
UKCS (90%: 166mcm/d)



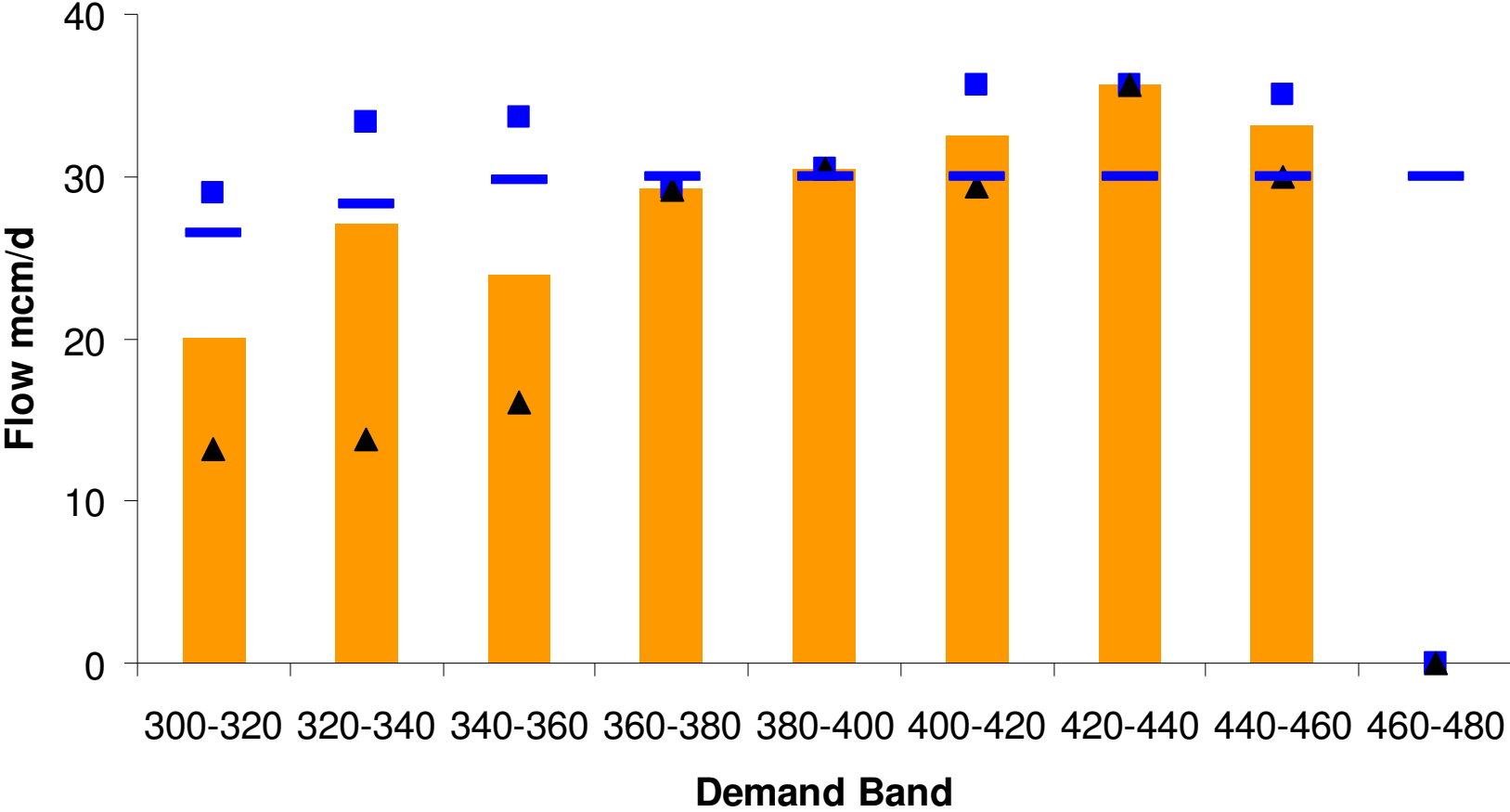
Norway (WOR 101mcm/d)



LNG (WOR 60mcm/d)

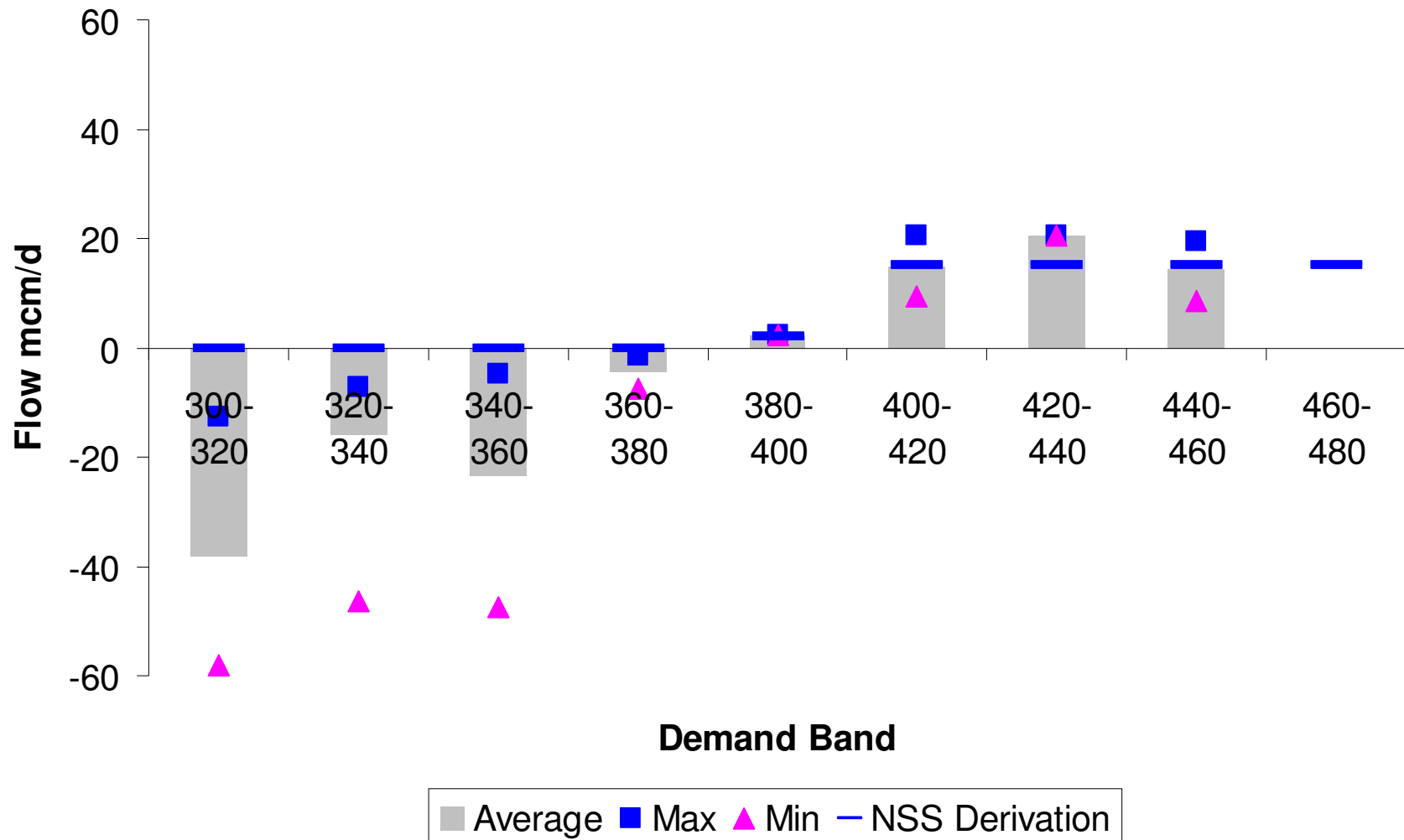


BBL (WOR 30mcm/d)



Legend: Average (orange square), Max (blue square), Min (black triangle), NSS Derivation (blue line)

IUK (Overall, WOR 10mcm/d during high demands)



Summary

- **NSS reviewed to reflect actual**
- **Done monthly as minimum**
- **Would be done ad hoc if significant sustained change**

- **GBA not issued within day if demand within day exceeds trigger level**