

Operational Overview

Operational Forum, 14th July 2010



nationalgrid

The power of action.™

Weather

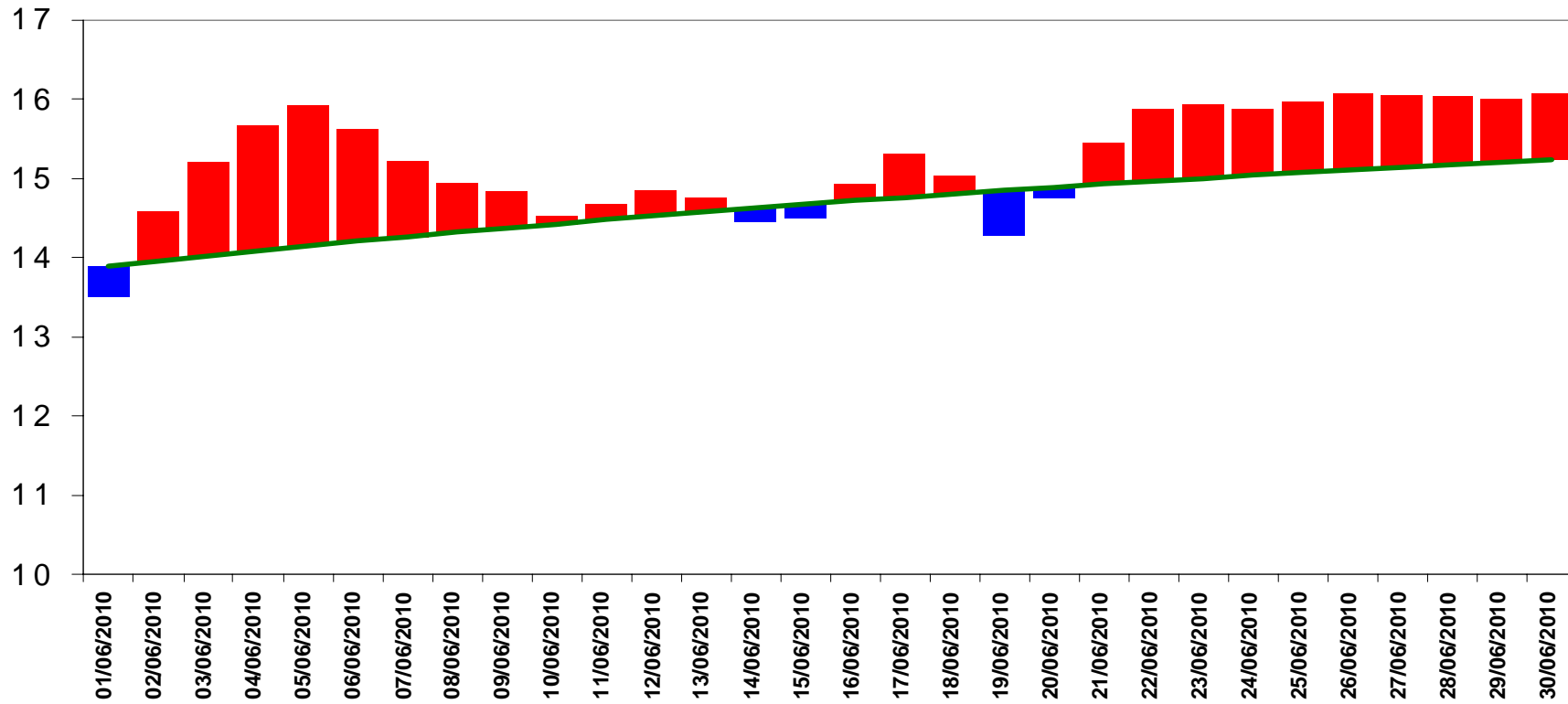


nationalgrid

The power of action.™

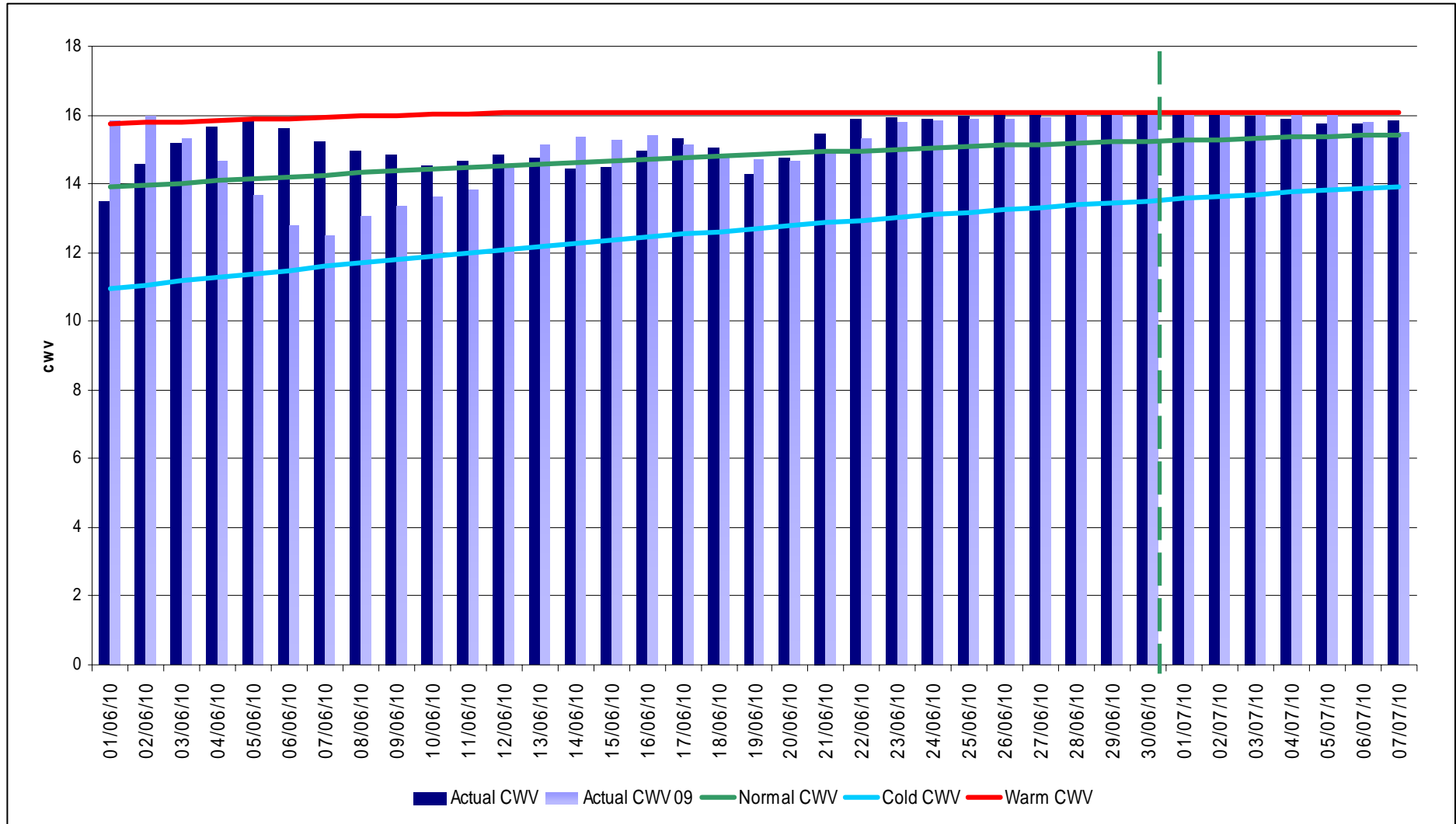
Weather – June 2010

National CWV and 17 year SNCW



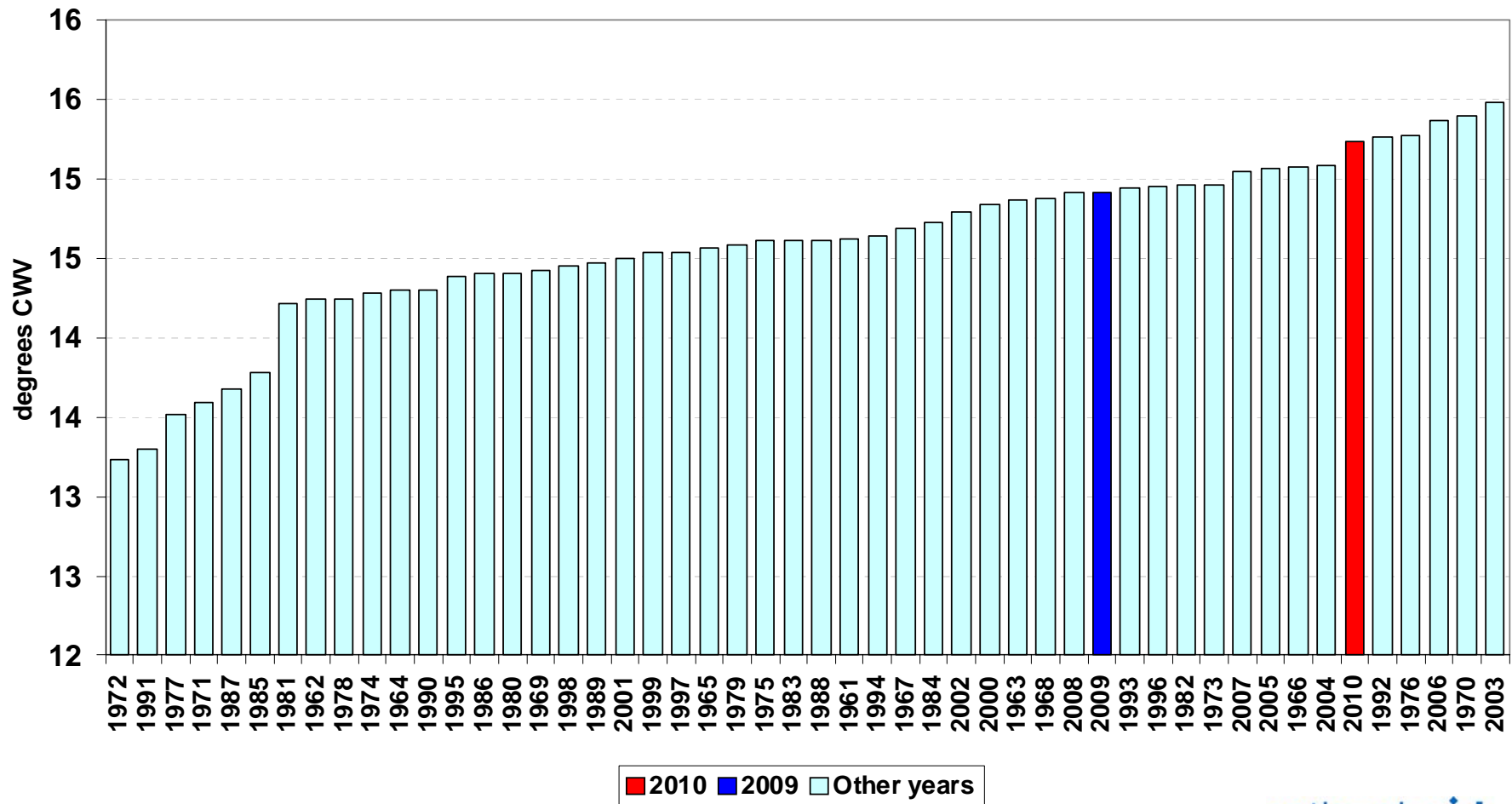
Composite Weather Variables

From 01-June-2010 to 07-July-2010



Mean Composite Weather Variable

Mean National Composite Weather for June



Demands

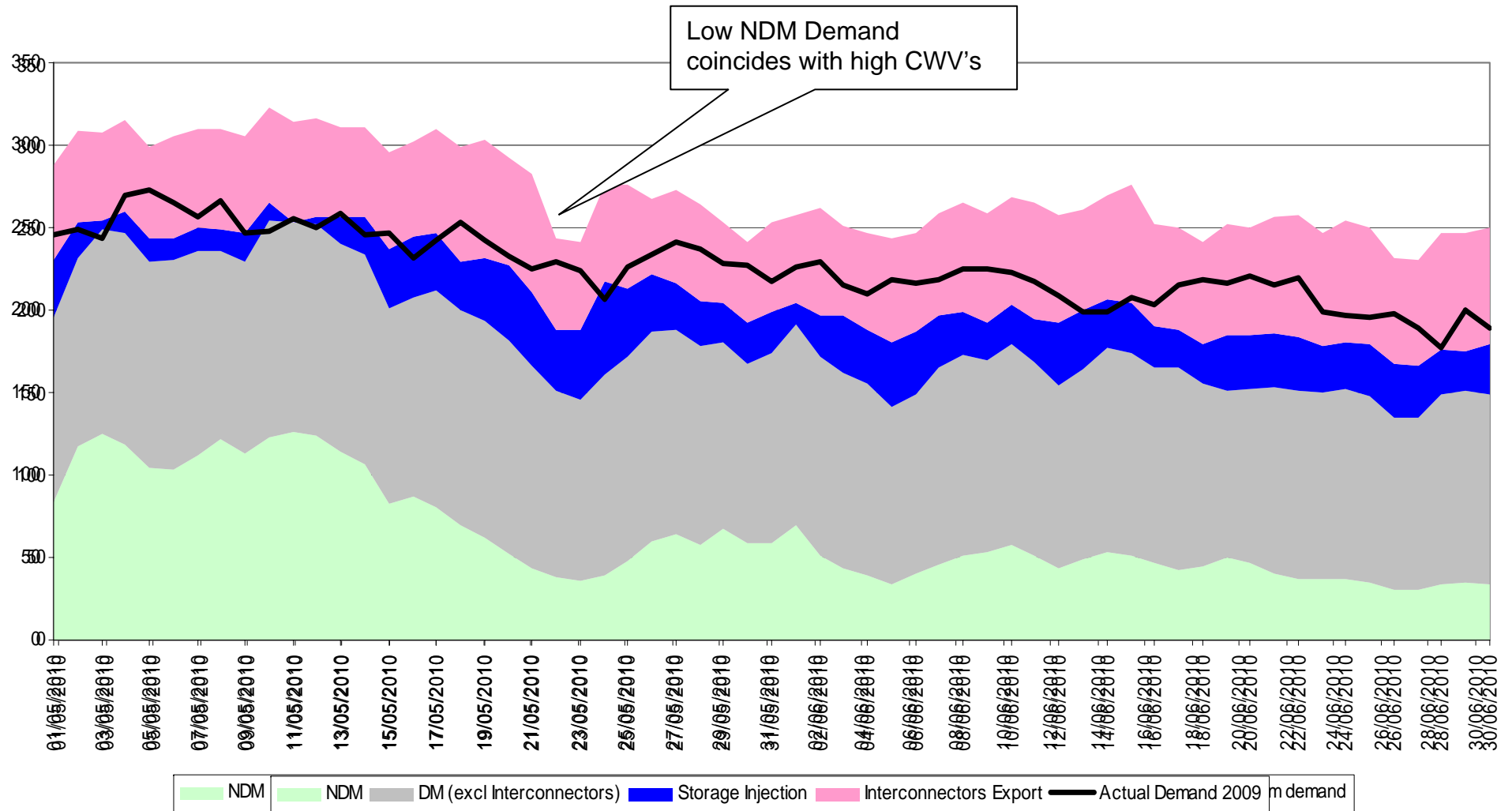


nationalgrid

The power of action.™

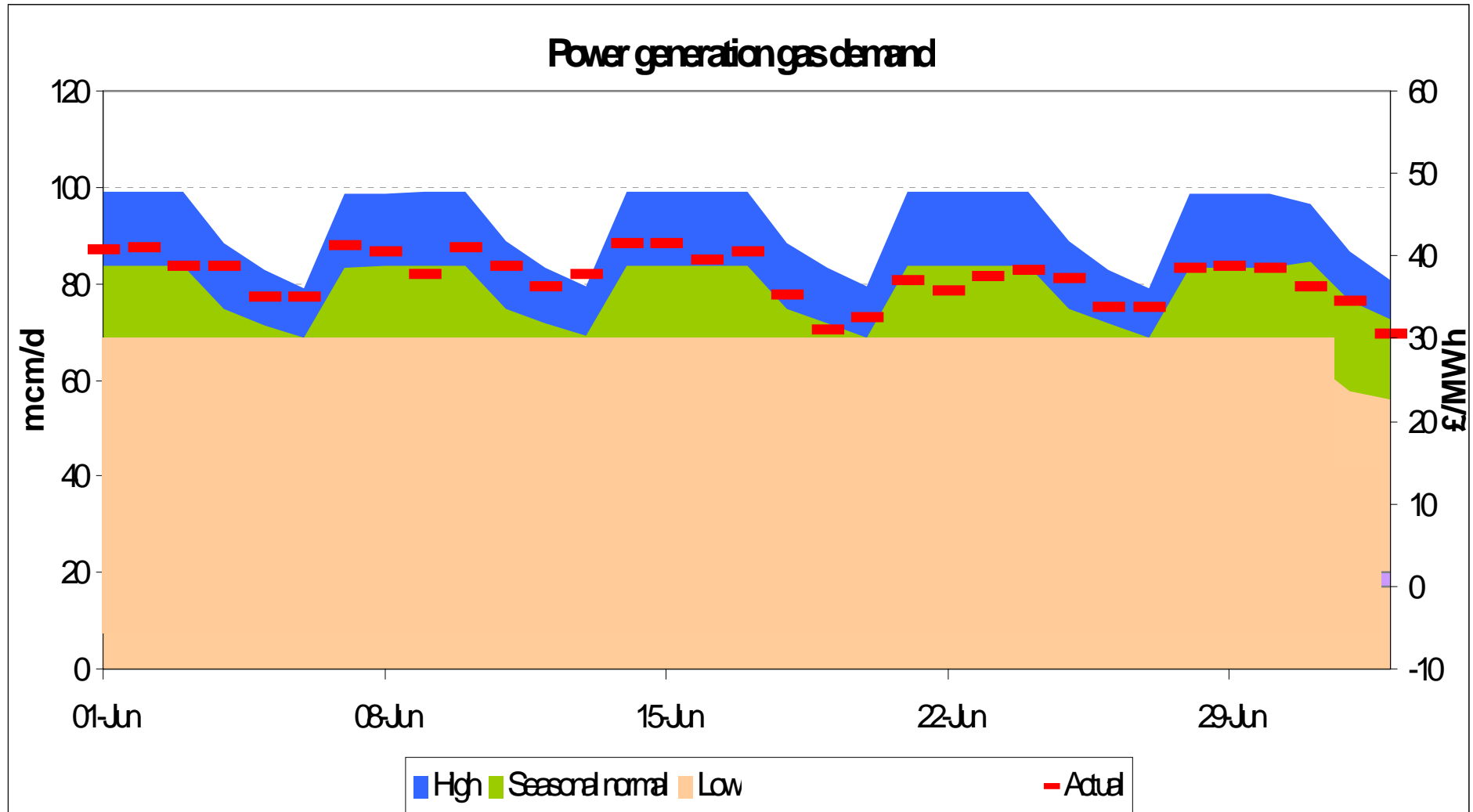
Gas Demand Breakdown

From 01st May 2010 to 30th June 2010



Power Generation

1st June to 30th June 2010



Generation data compiled from half hourly data from http://www.bmreports.com/bsp/bsp_home.htm

nationalgrid

The power of action.

Supplies

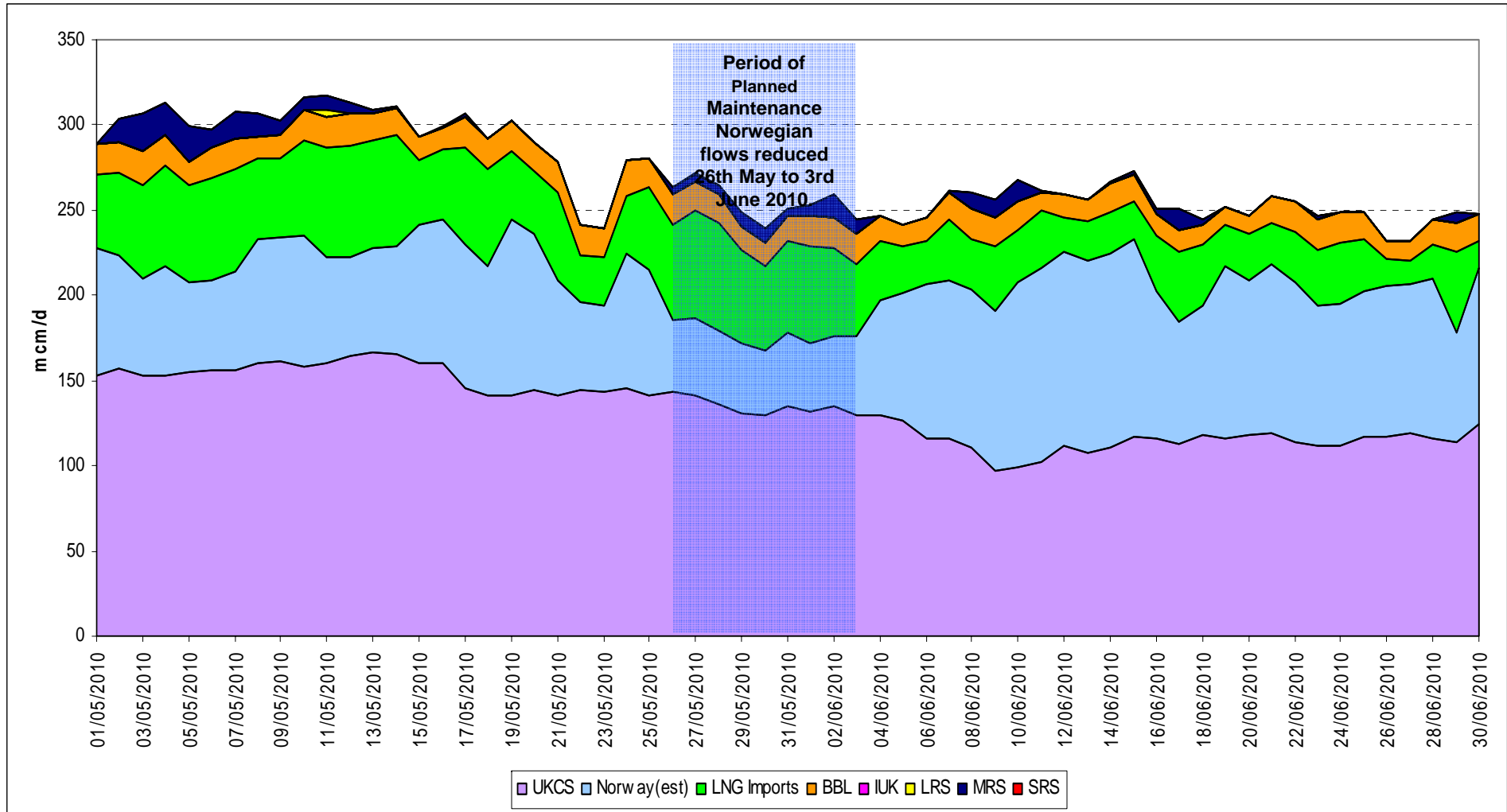


nationalgrid

The power of action.™

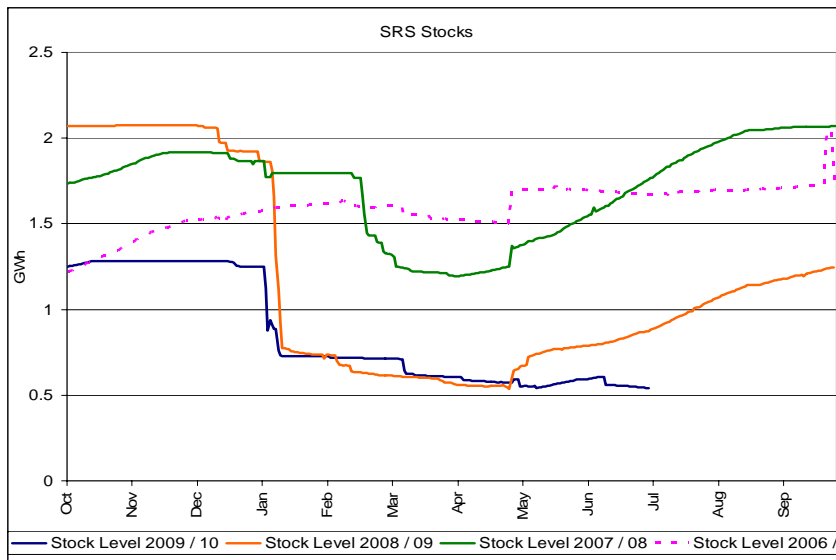
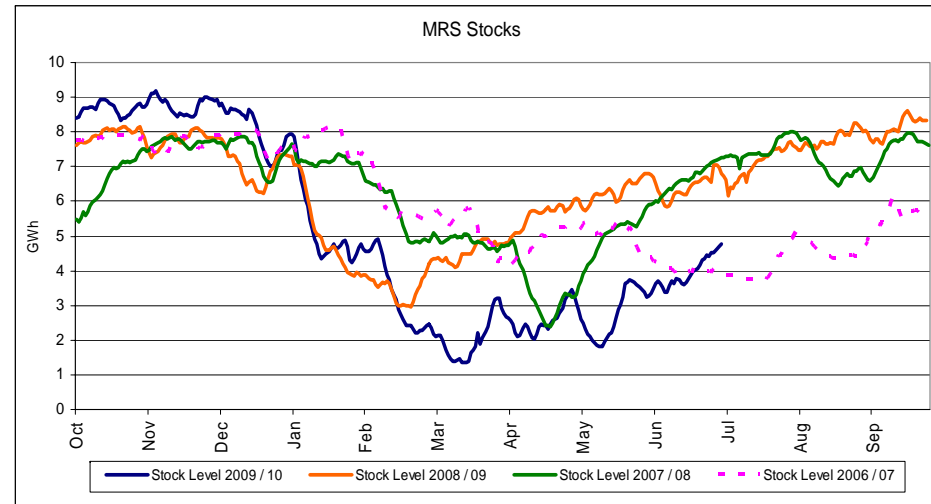
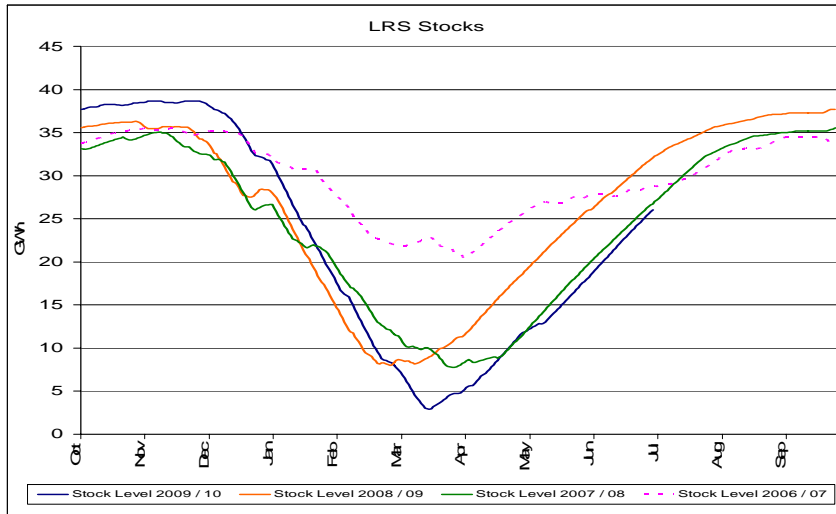
Gas Supply Breakdown

From 1-May-2010 to 30-June-2010

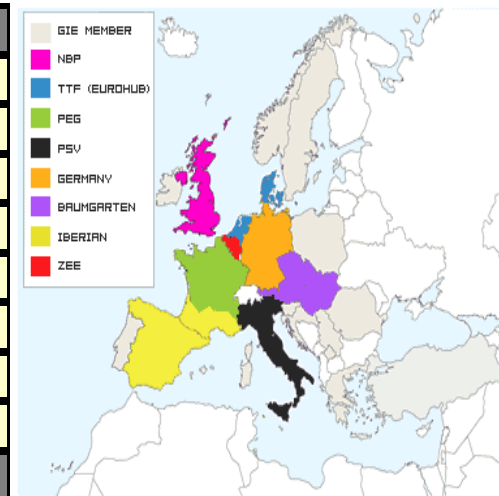


Storage Stocks - UK

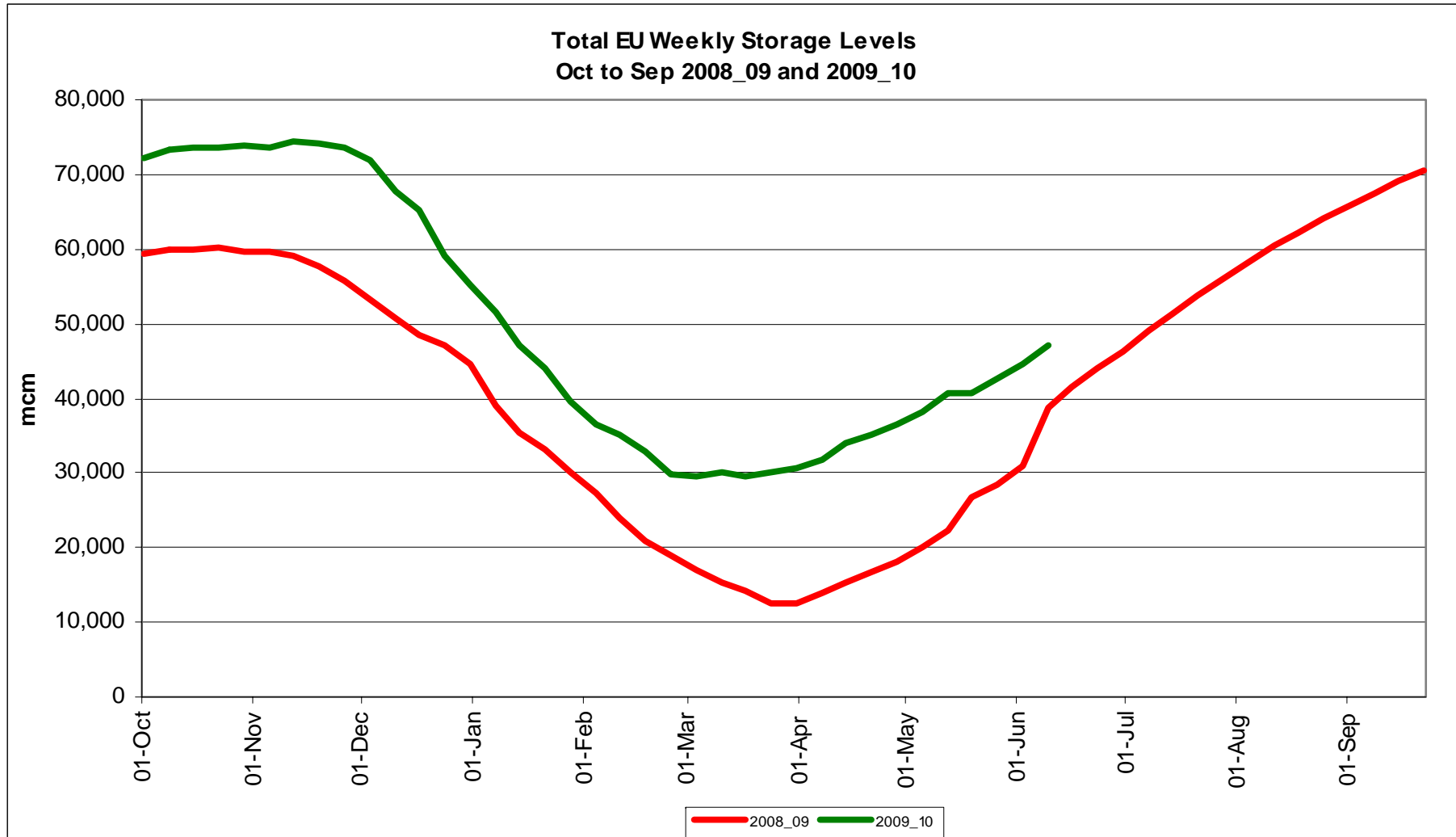
From 01-October-2009 to 04-July-2010



Hub Area	Stock Level	% Full
Baumgarten	9601,74 mcm	65,40 %
Germany	12772,09 mcm	66,24 %
Iberian	4069,00 mcm	69,24 %
NBP	2809,00 mcm	59,06 %
PEG	3081,00 mcm	34,67 %
PSV	10074,45 mcm	69,88 %
TTF (Eurohub)	1237,38 mcm	61,93 %
ZEE	319,38 mcm	46,49 %
TOTAL HUBS	43964,04	62,28 %



Storage Stocks - EU



Transporter Actions & Neutrality

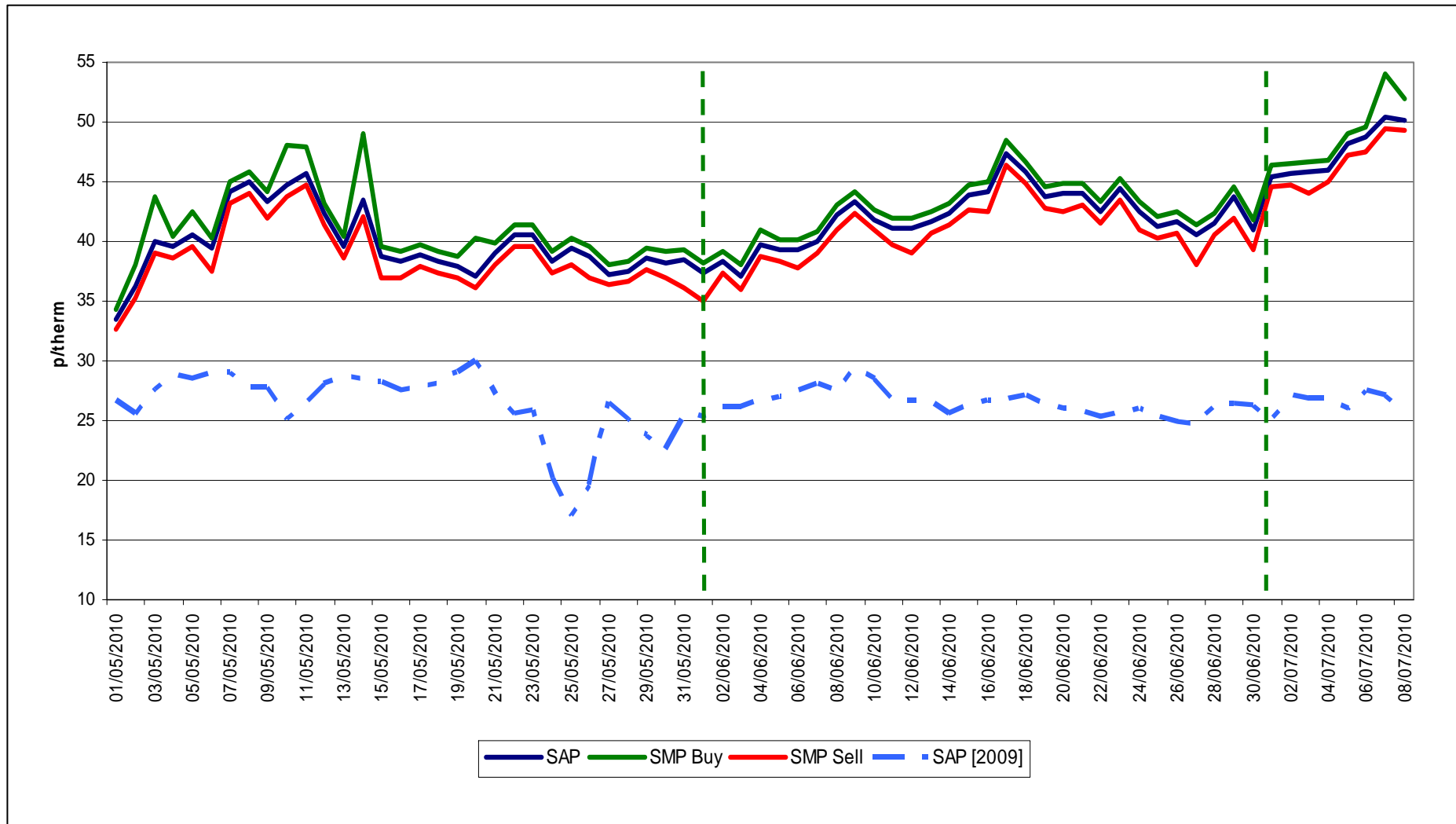


nationalgrid

The power of action.™

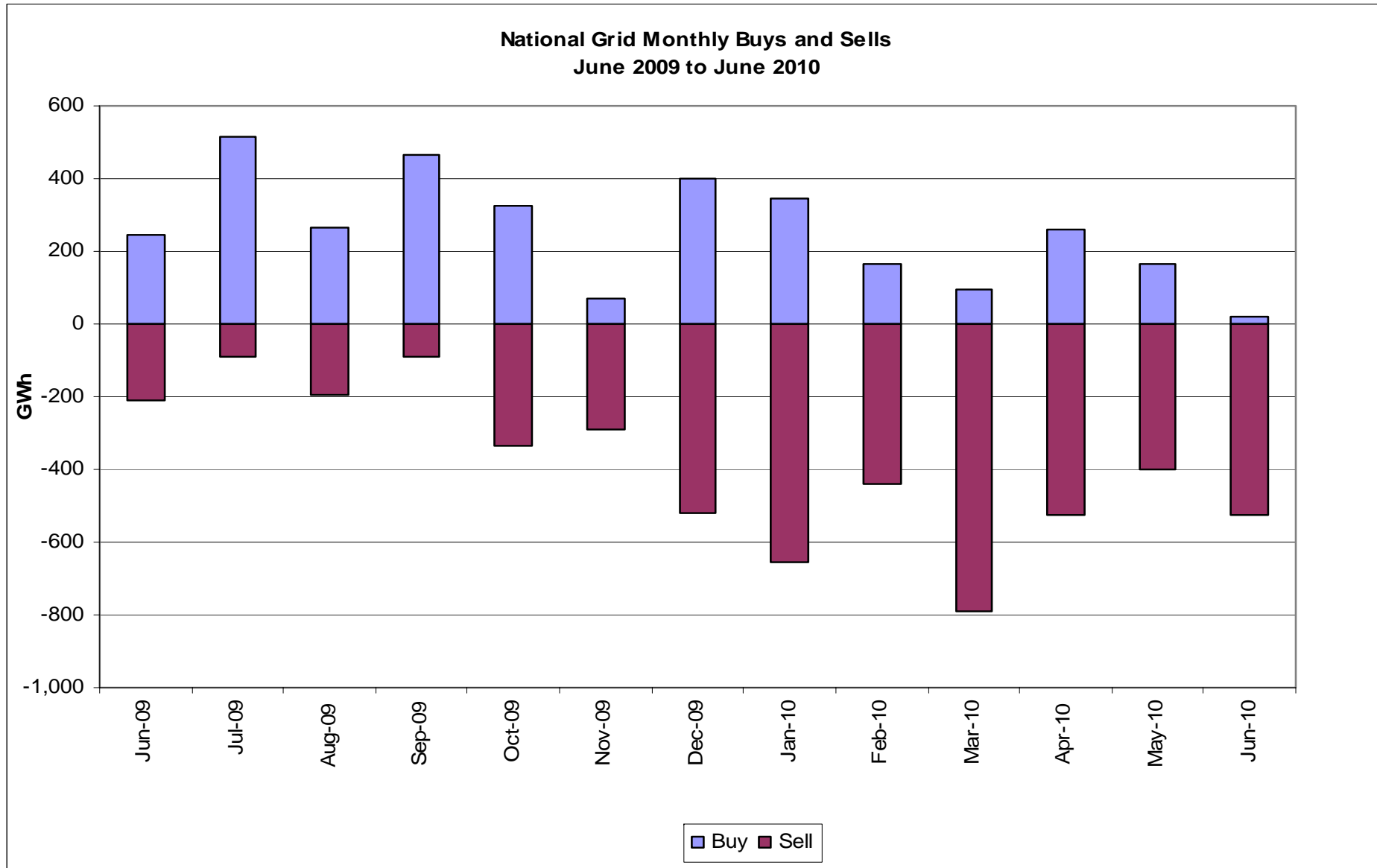
System Prices

From 1 May 2010 to 8 July 2010



Transporter Energy Traded on the OCM

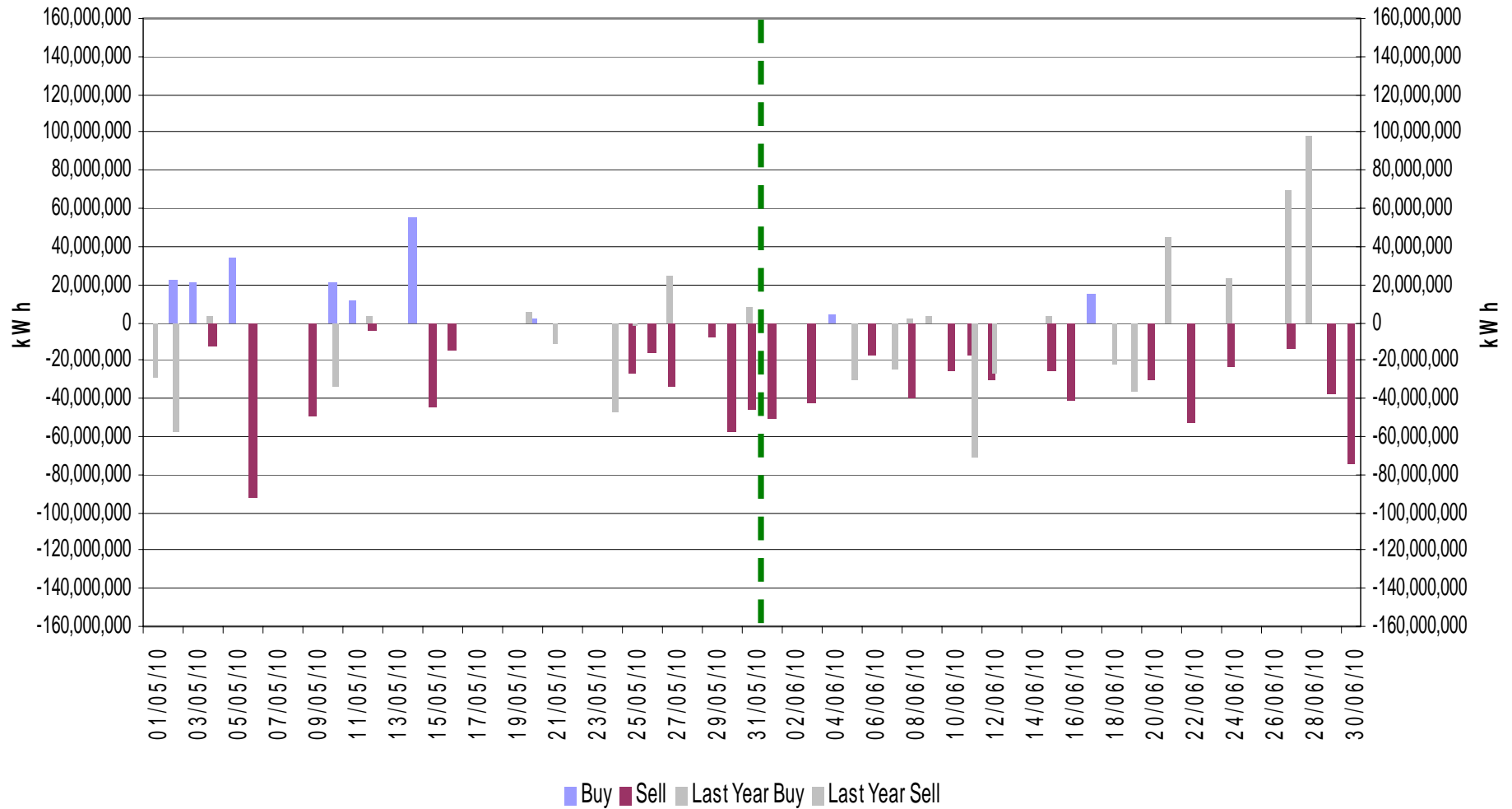
Buys and Sells by Month
From June 2009 to June 2010



Transporter Energy Traded on the OCM

Buys and Sells by Day

From 1-May-2010 to 30-June-2010



Days of Default SMP Prices

From 01-June-2010 to 30-June-2010

Percentage of Days of Default SMP

SMP Buy

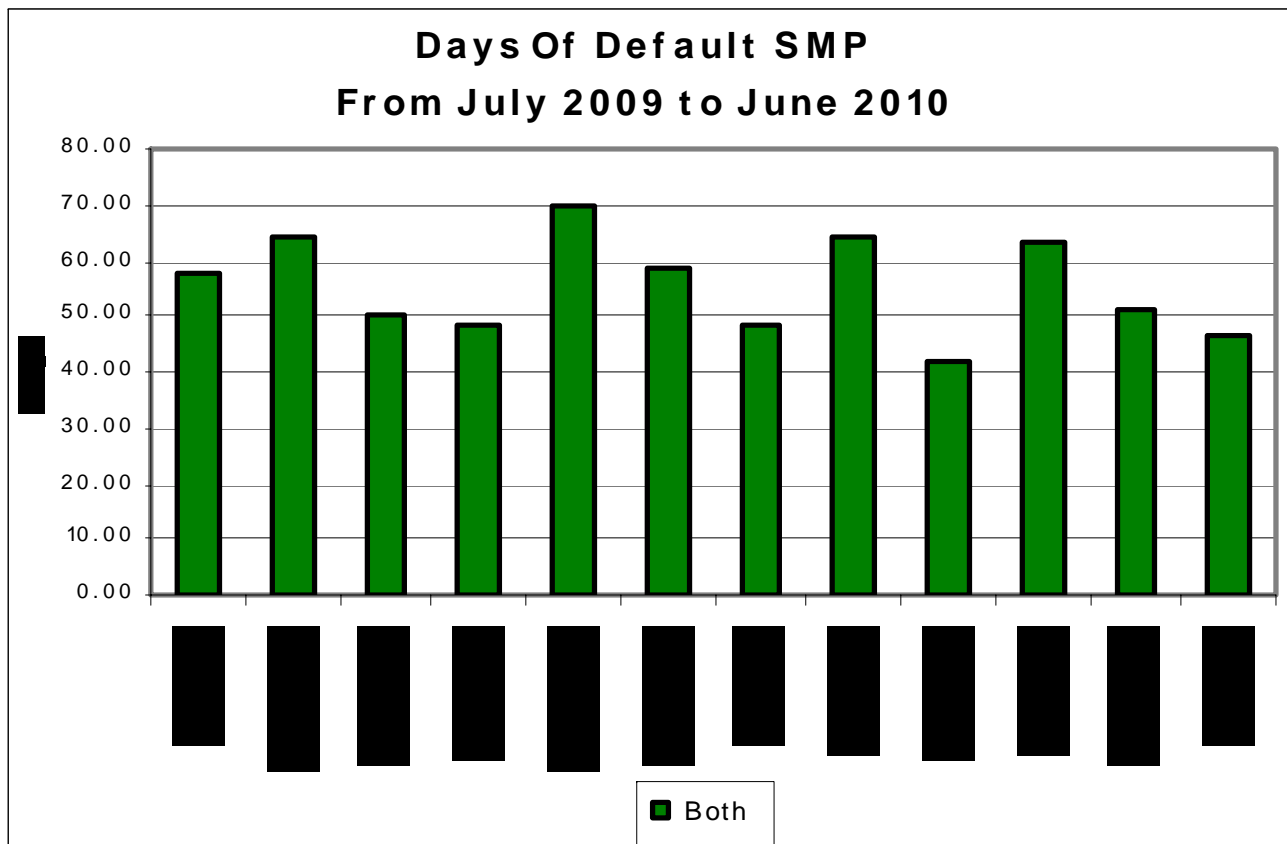
SMP Sell

Both

90.0%

53.3%

46.7%



nationalgrid

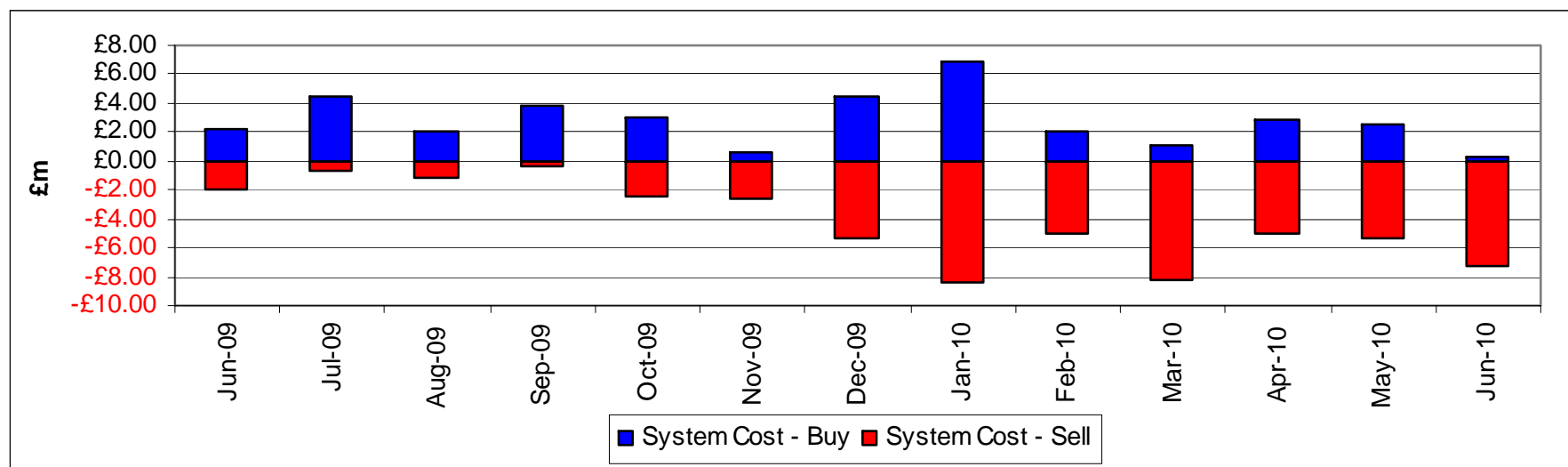
The power of action.

Transporter Actions on OCM Mechanism

Revenues / Costs

From 01-October-2009 to 30-June-2010

	Quantity (TWh)	Average Price (p/KWh)	Average Price (p/therm)	Cost (£m)
System Buy	1.84	1.30	38.04	£23.93
System Sell	-4.49	1.10	32.35	-£49.53
Net Position	-2.65 Sell			-£25.60

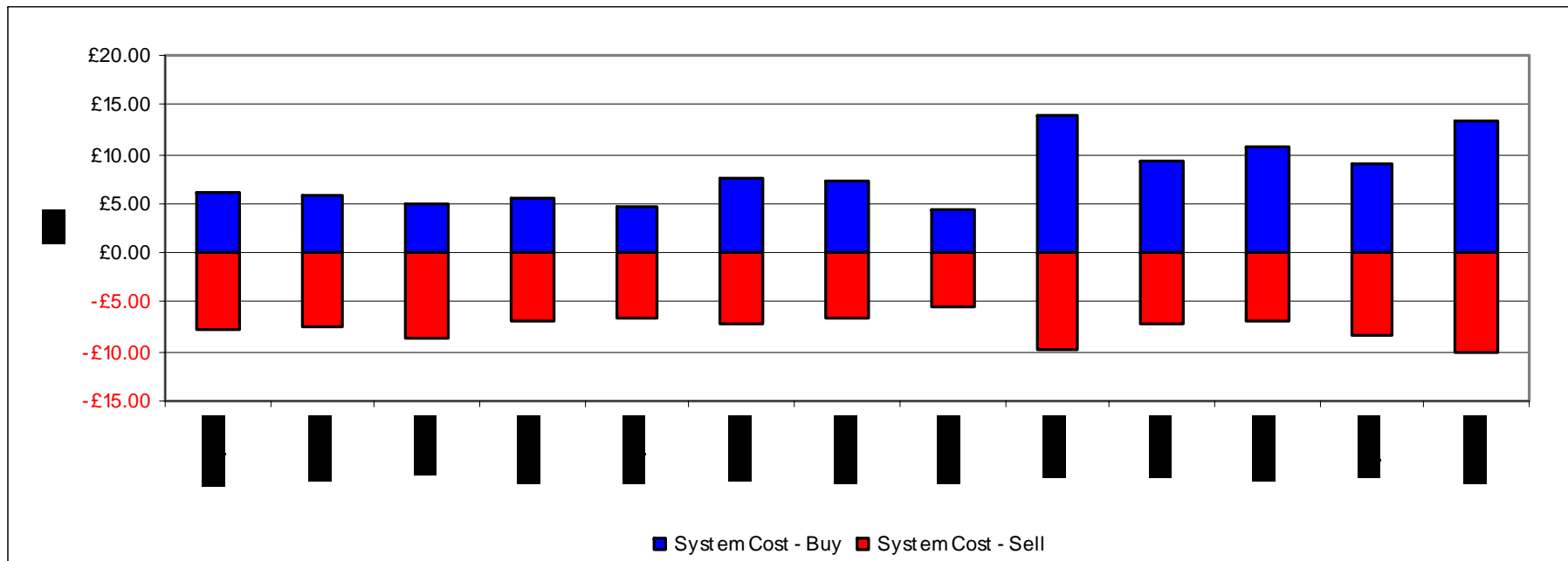


Shipper Imbalances

Revenues / Costs

From 01-October-2009 to 31-May-2010

System	Quantity (TWh)	Average Price (p/KWh)	Average Price (p/therm)	Cost £m
System Buy Shipper overdelivery/cost to neutrality	7.73	1.06	31.14	£82.15
System Sell Shipper underdelivery/revenue to neutrality	-5.76	1.15	33.68	-£66.16
Net Position	1.97 Buy			£15.99



Scheduling Revenues

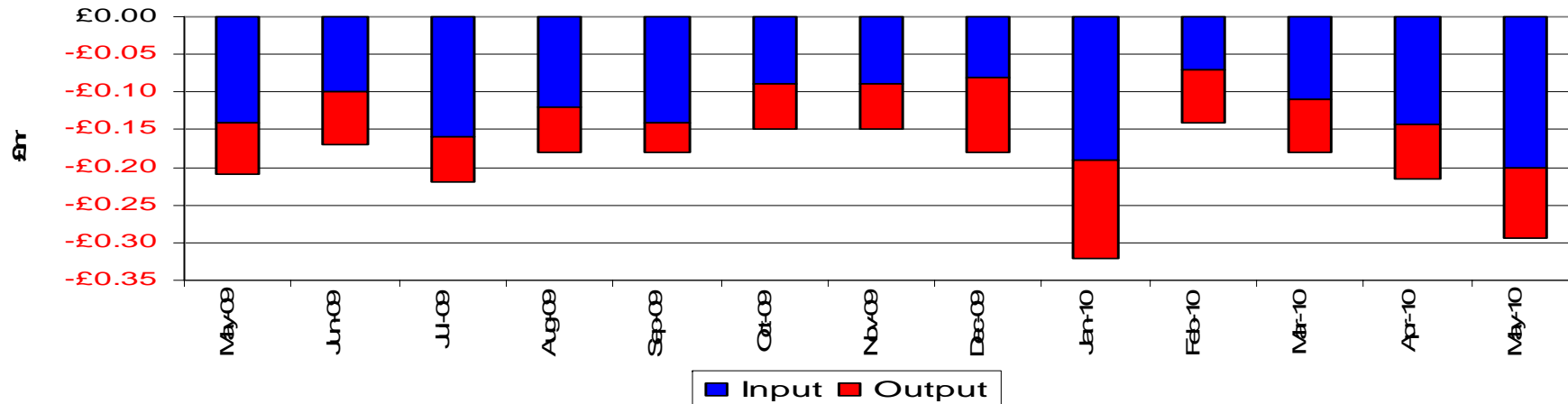
From 01-October-2009 to 31-May-2010

Cost £m

Input -£0.98

Output -£0.65

Total -£1.63

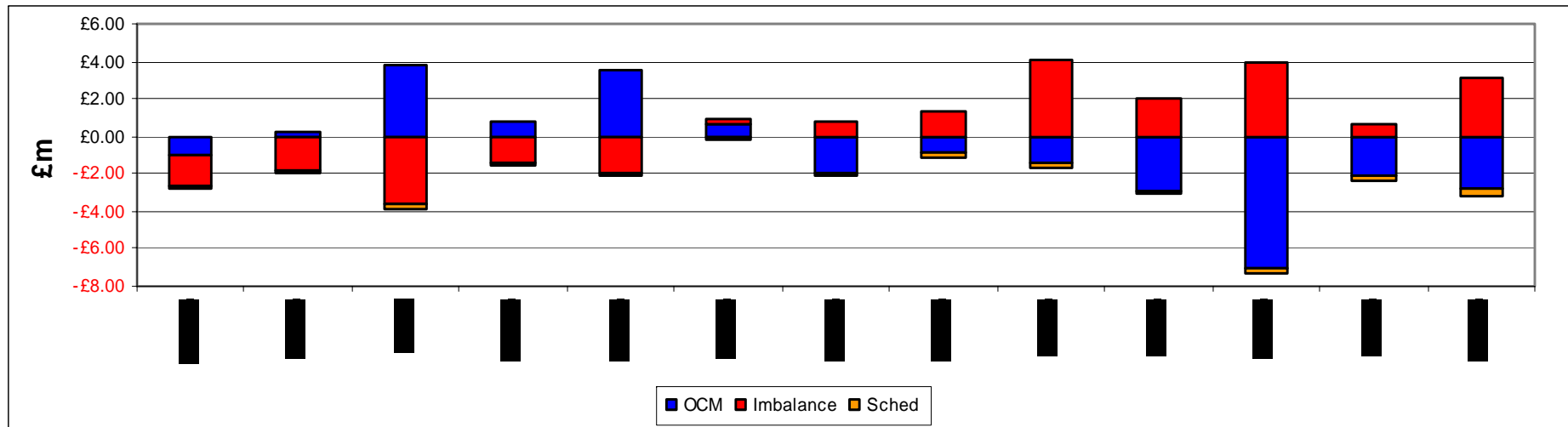


Balancing Costs

From 01-October-2009 to 31-May-2010

	£m
Transporter actions on OCM	-18.63
Imbalance Charge	15.99
Scheduling Charge	-1.63
Balancing Cost	-4.27

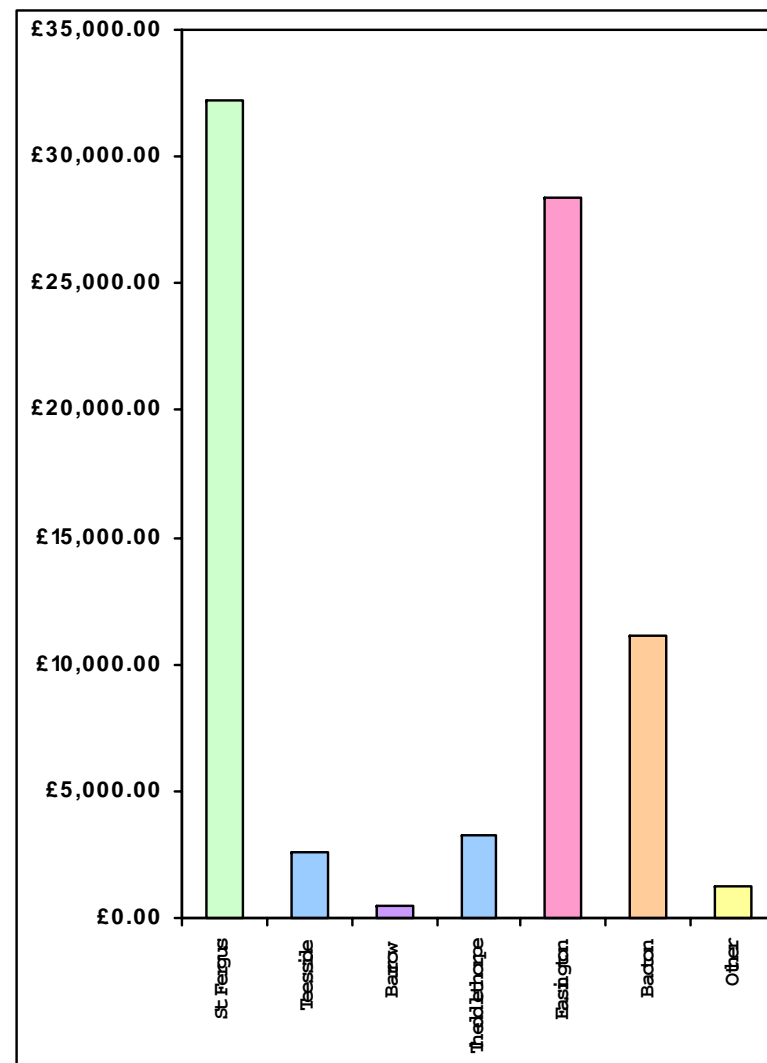
(0.0012p/KWh or 0.03627p/Therm of Throughput)



Capacity Neutrality – Revenues From DSEC & DAI

From 01 April 2010 to 31May 2010

ASEP	Revenue
St Fergus	-£32,223.66
Teesside	-£2,621.33
Barrow	-£464.50
Theddlethorpe	-£3,293.15
Easington	-£28,353.19
Bacton	-£11,161.33
Other	-£1,238.55
TOTAL	-£79,355.77



Capacity Neutrality – Prompt Buy Backs

From 01 April 2010 to 31 May 2010

ASEP	Cost	No.of days	Volume (kWh)
St Fergus	£0	0	0
Teesside	£0	0	0
Barrow	£0	0	0
Theddlethorpe	£0	0	0
Easington	£0	0	0
Bacton	£0	0	0
TOTAL	£0	0	0

Capacity Neutrality – Capacity Management Agreement (including

RMTTSEC)

From 01 April 2010 to 31May 2010

Month	Cost
April 2010	£0.00
May 2010	£0.00
Total	£0,00

Capacity Neutrality – Revenues From Entry Capacity Overruns

From 01 April 2010 to 31May 2010

Capacity Neutrality – Net Cost/Revenue

From 01 April 2010 to 31May 2010

DSEC/DAI Revenue	-£79,355.77
Buy back costs	£0.00
Capacity Management Agreement	£0.00
Entry Capacity Overrun Revenue	
Net Revenue (excl. Overrun Revenue)	-£79,355.77