

Operational Overview

Operational Forum, 26th May 2010



nationalgrid

The power of action.™

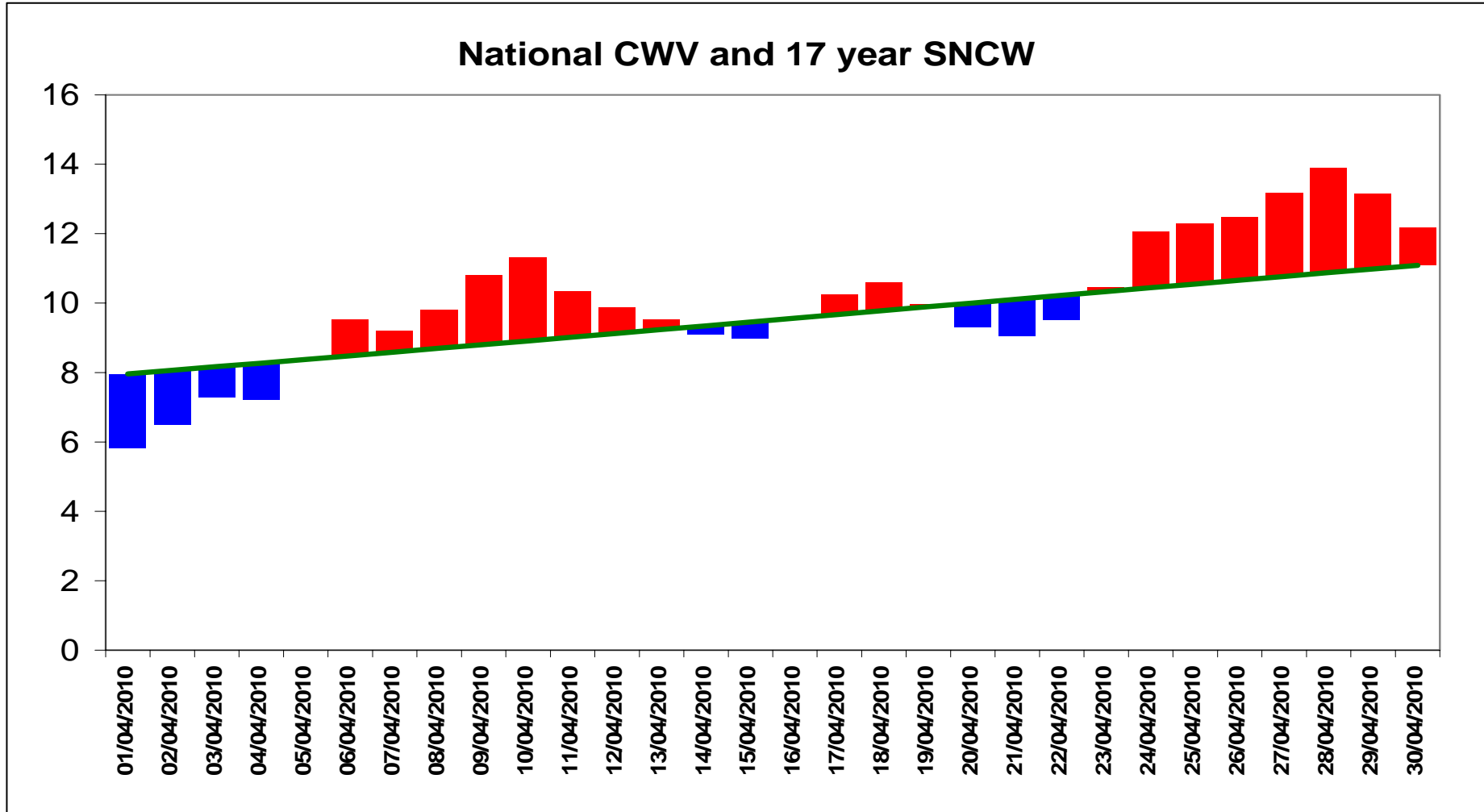
Weather



nationalgrid

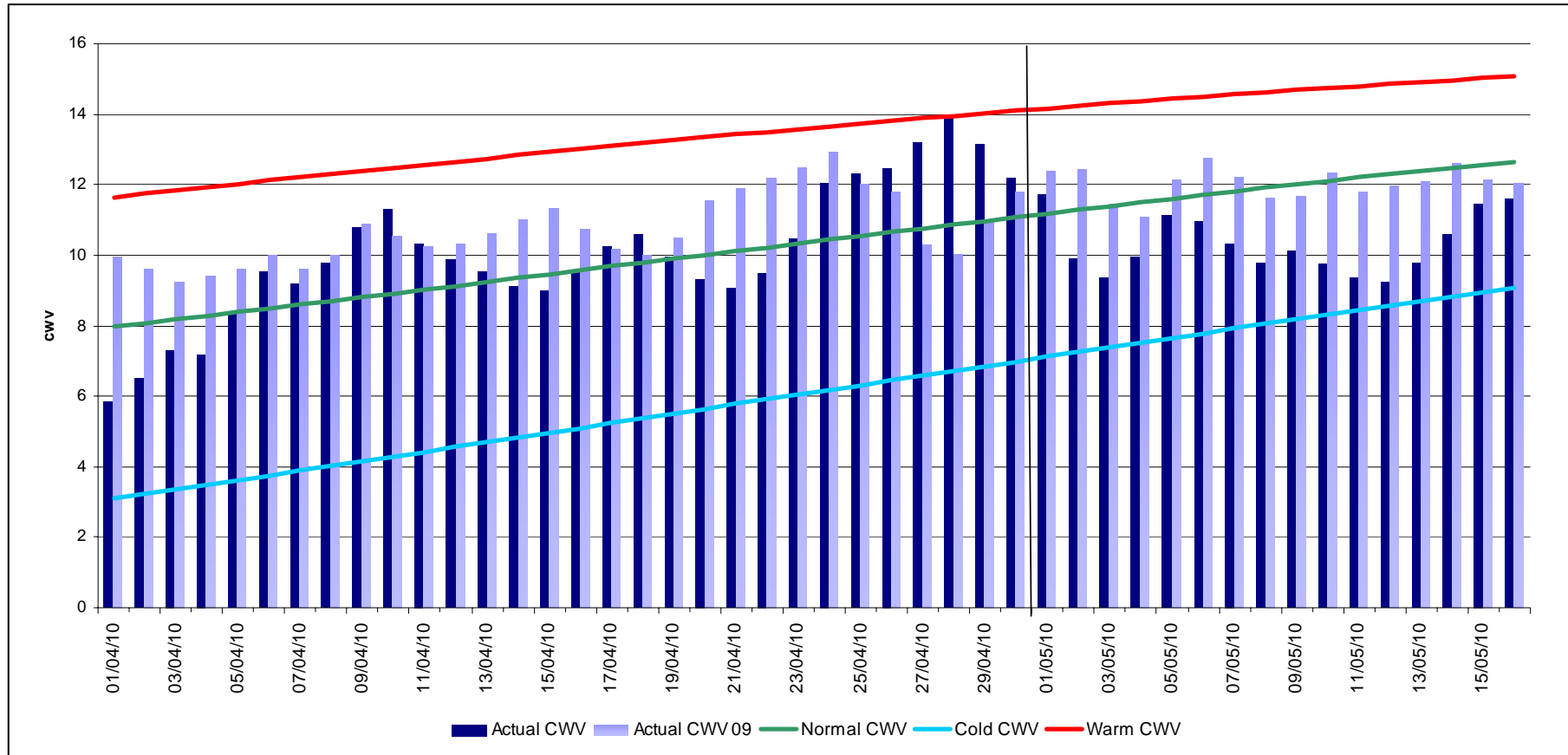
The power of action.™

Weather – April 2010

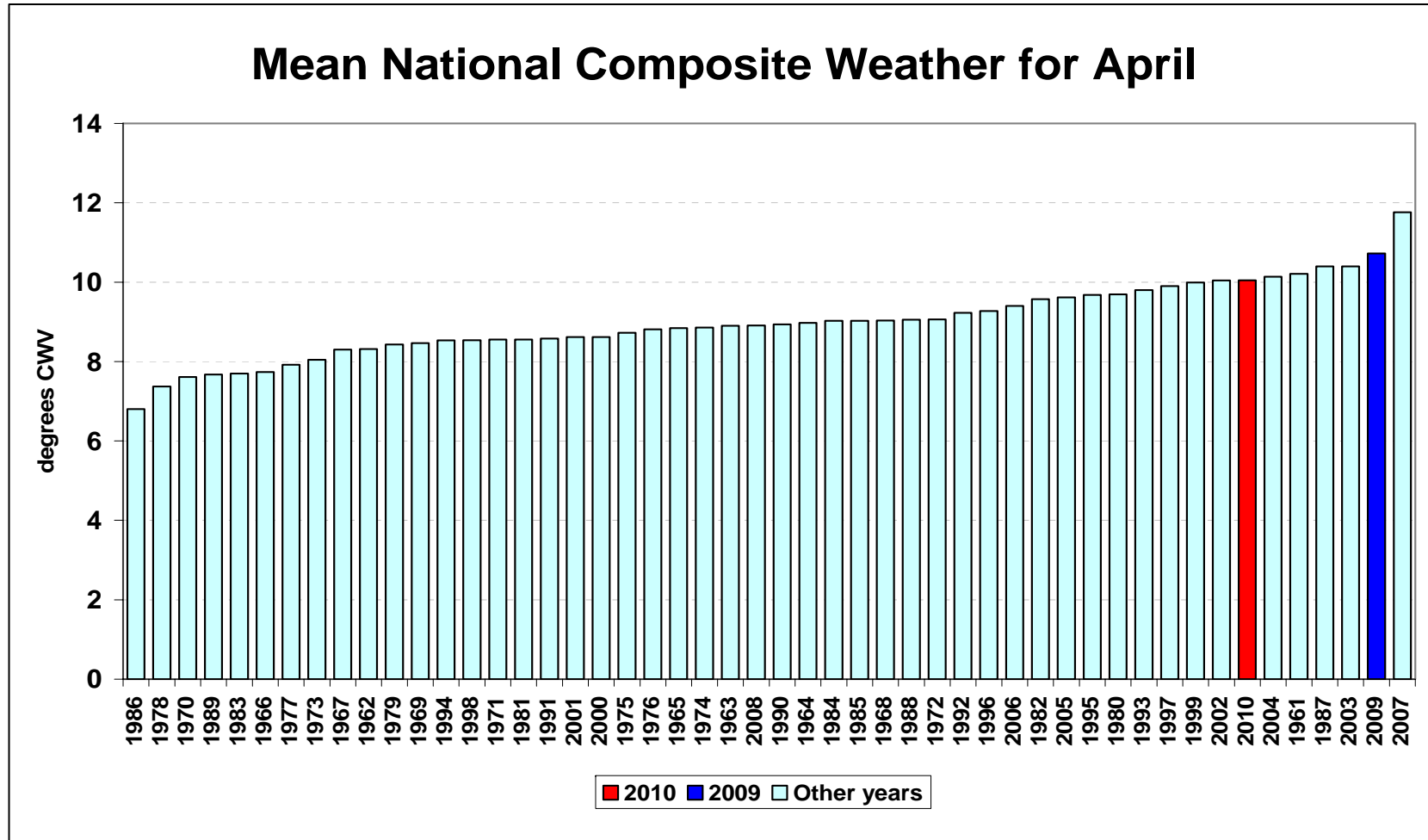


Composite Weather Variables

From 1-April-2010 to 12-May-2010



Mean Composite Weather Variable



Demands

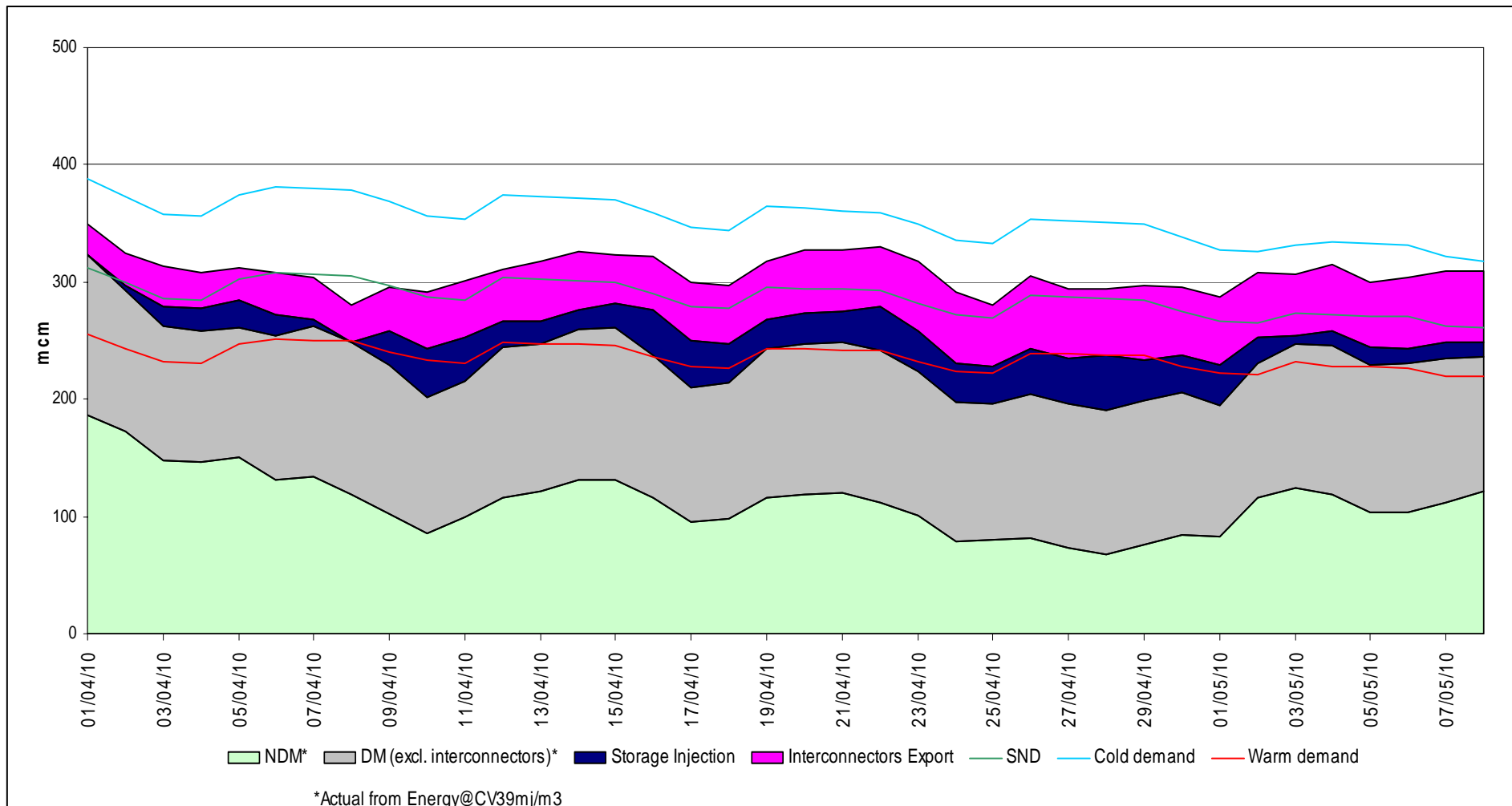


nationalgrid

The power of action.™

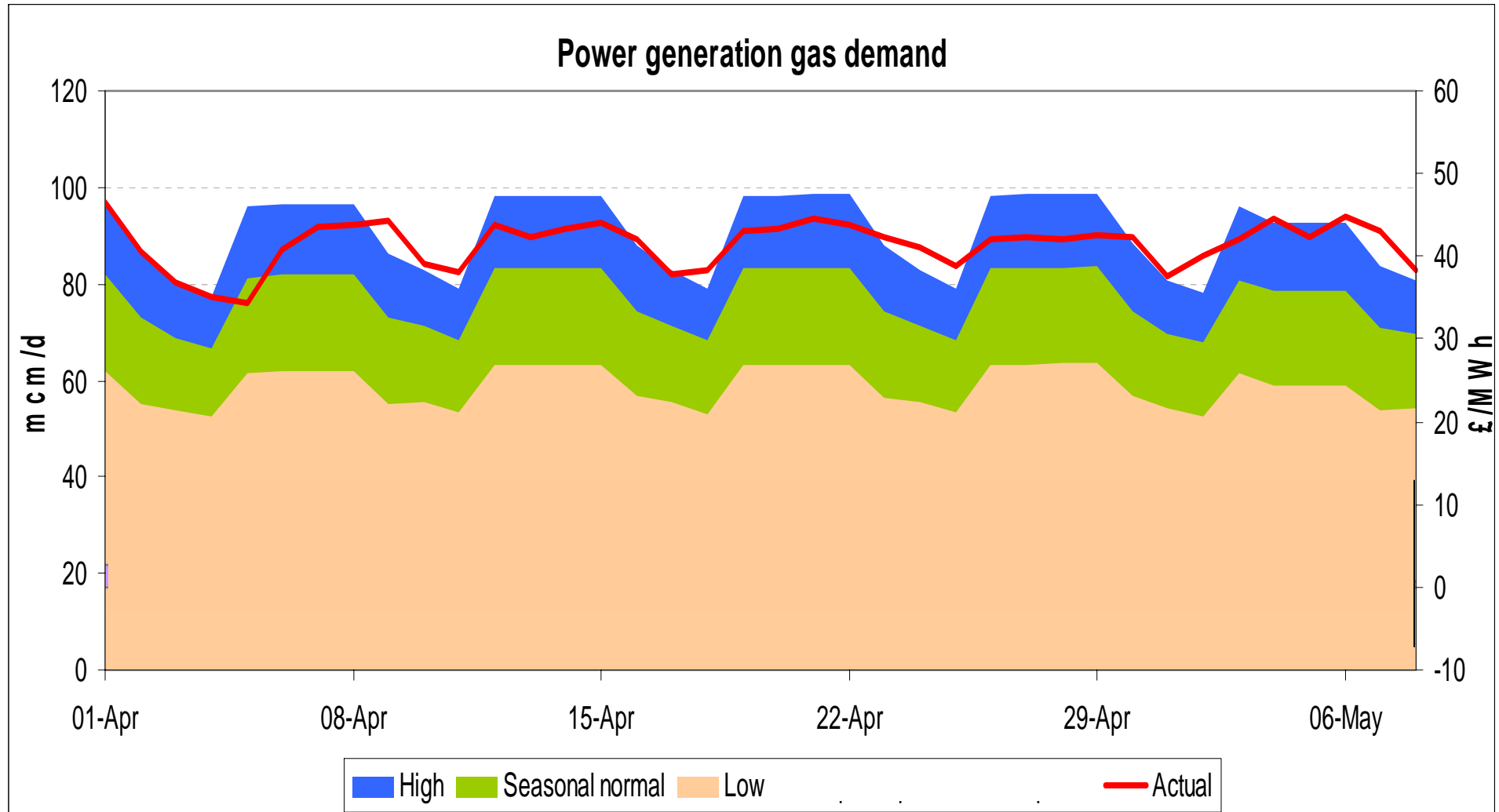
Gas Demand Breakdown

From 1-April-2010 to 08-May-2010



Power Generation

1st April to 7th May 2010



Generation data compiled from half hourly data from http://www.bmreports.com/bsp/bsp_home.htm

nationalgrid

The power of action.

Supplies

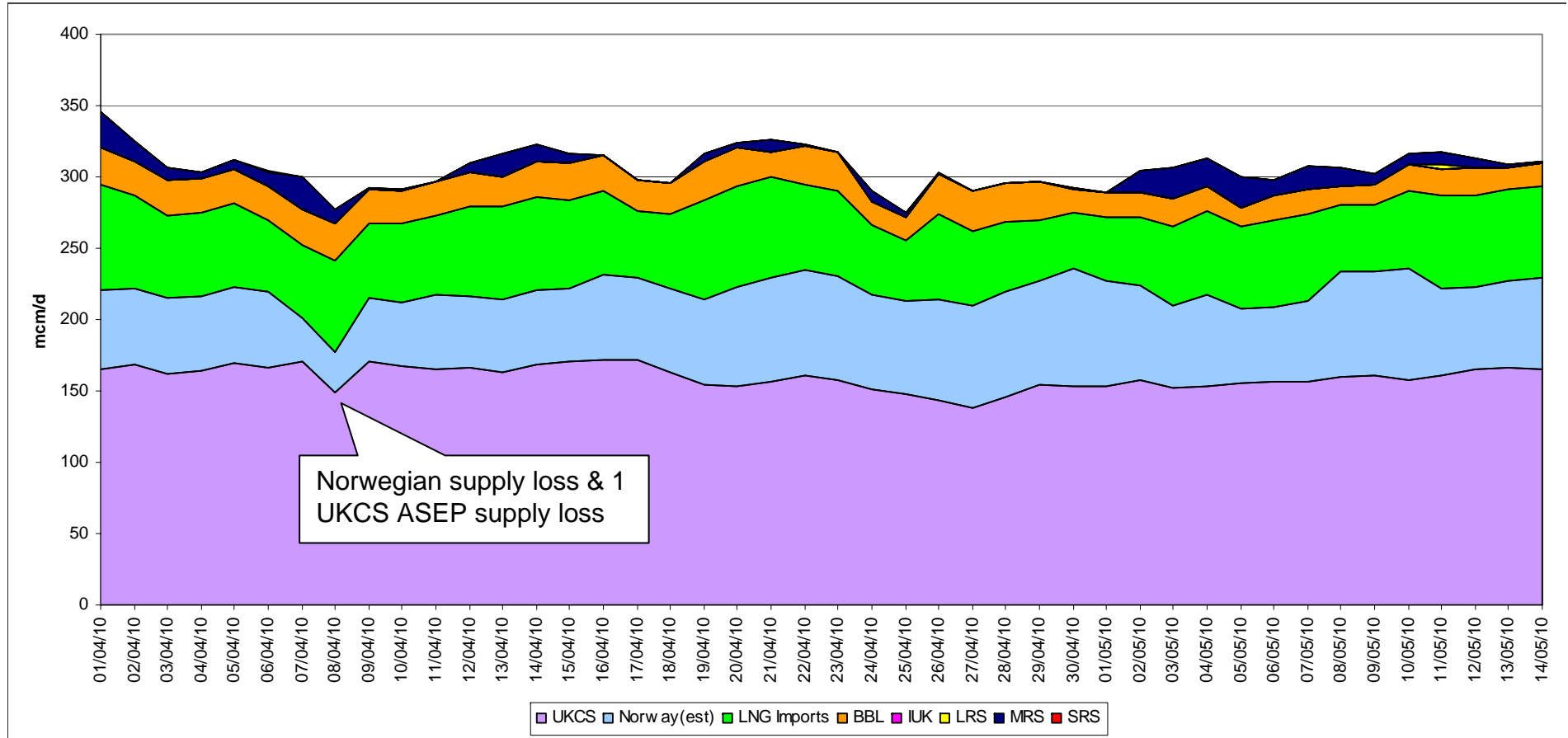


nationalgrid

The power of action.™

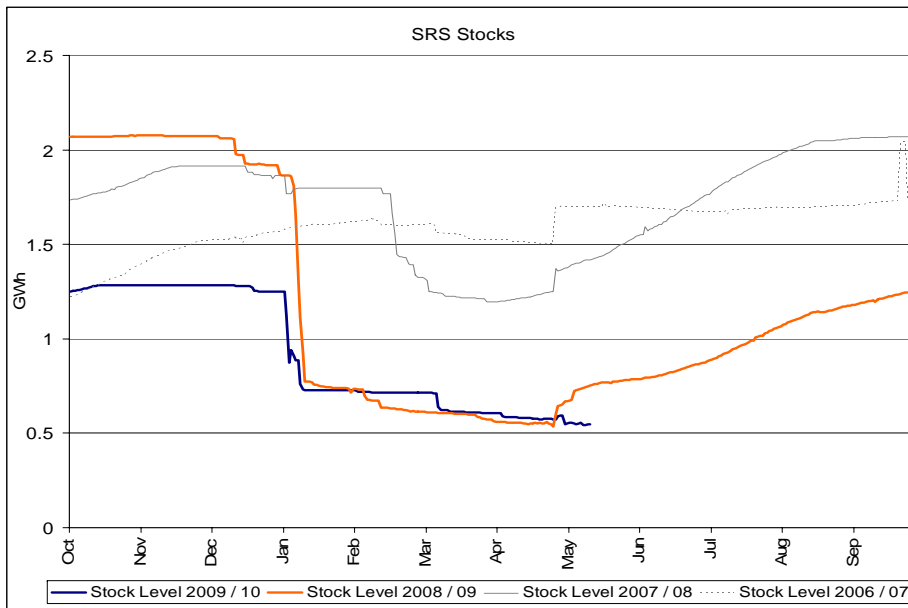
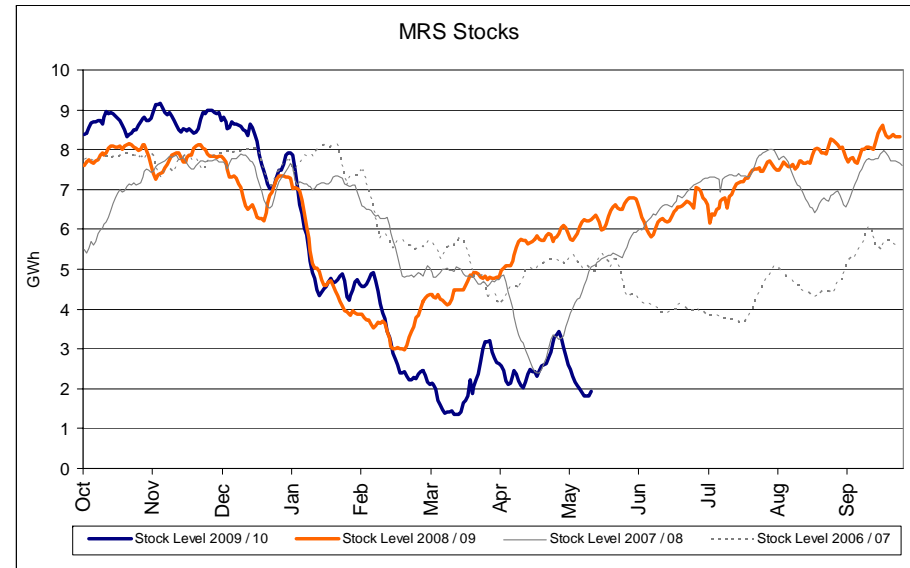
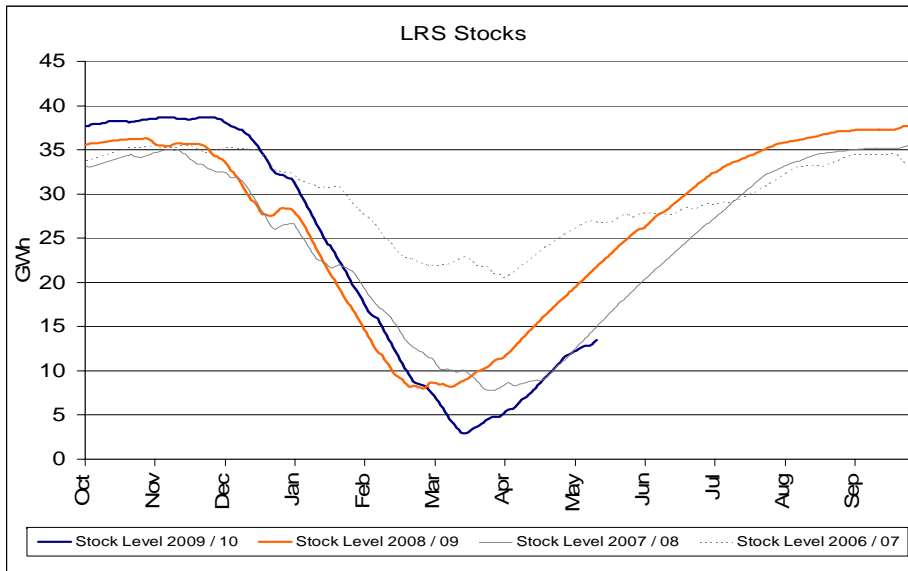
Gas Supply Breakdown

From 1-April-2010 to 14-May-2010

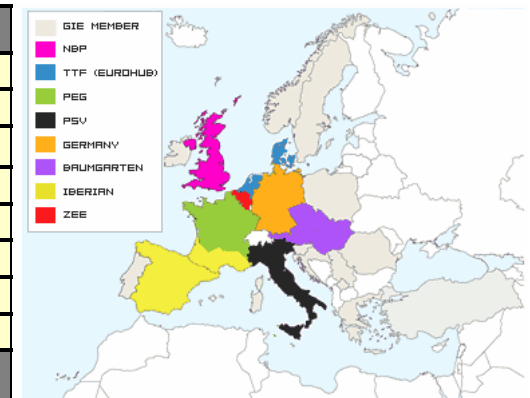


Storage Stocks - UK

From 01-October-2009 to 15-May-2010



Hub Area	Stock Level	% Full
Baumgarten	7369,35 mcm	50,19 %
Germany	9979,62 mcm	51,75 %
Iberian	3030,00 mcm	51,56 %
NBP	1474,00 mcm	30,99 %
PEG	2320,00 mcm	26,11 %
PSV	7812,20 mcm	54,19 %
TTF (Eurohub)	652,29 mcm	32,65 %
ZEE	109,90 mcm	16,00 %
TOTAL HUBS	32747,37	46,39 %



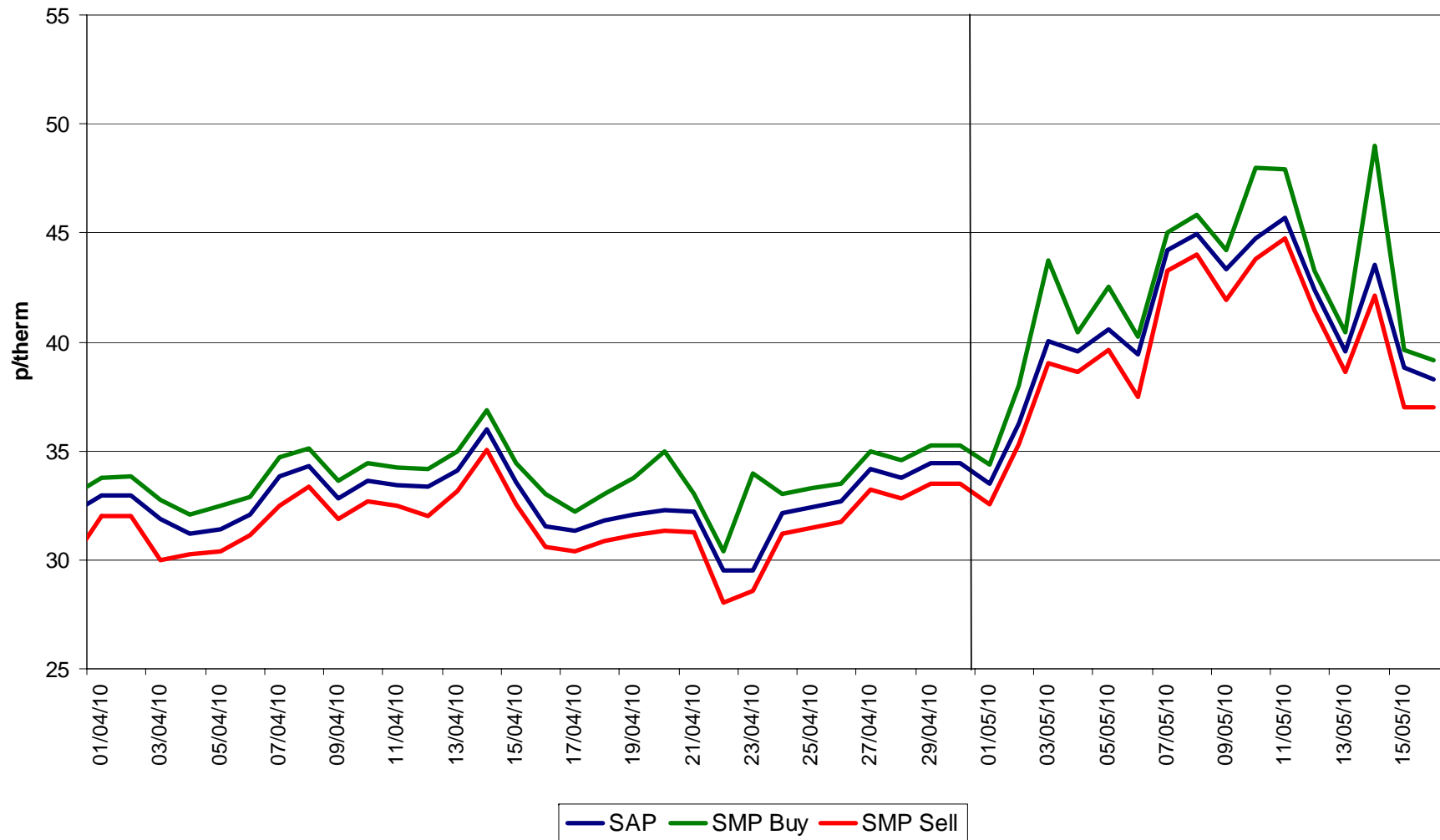
Transporter Actions & Neutrality



nationalgrid
The power of action.™

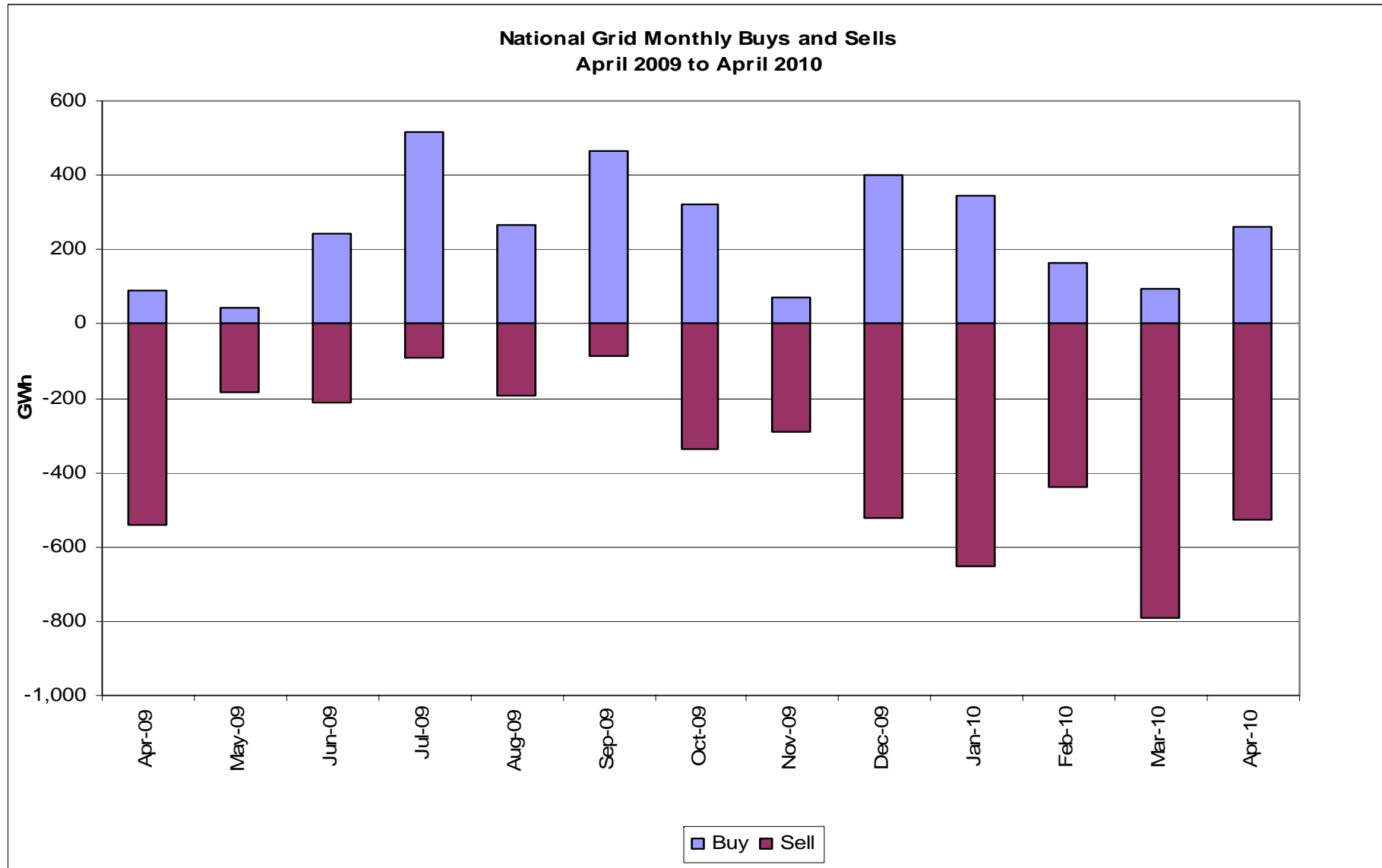
System Prices

From 1 April 2010 to 16 May 2010



Transporter Energy Traded on the OCM

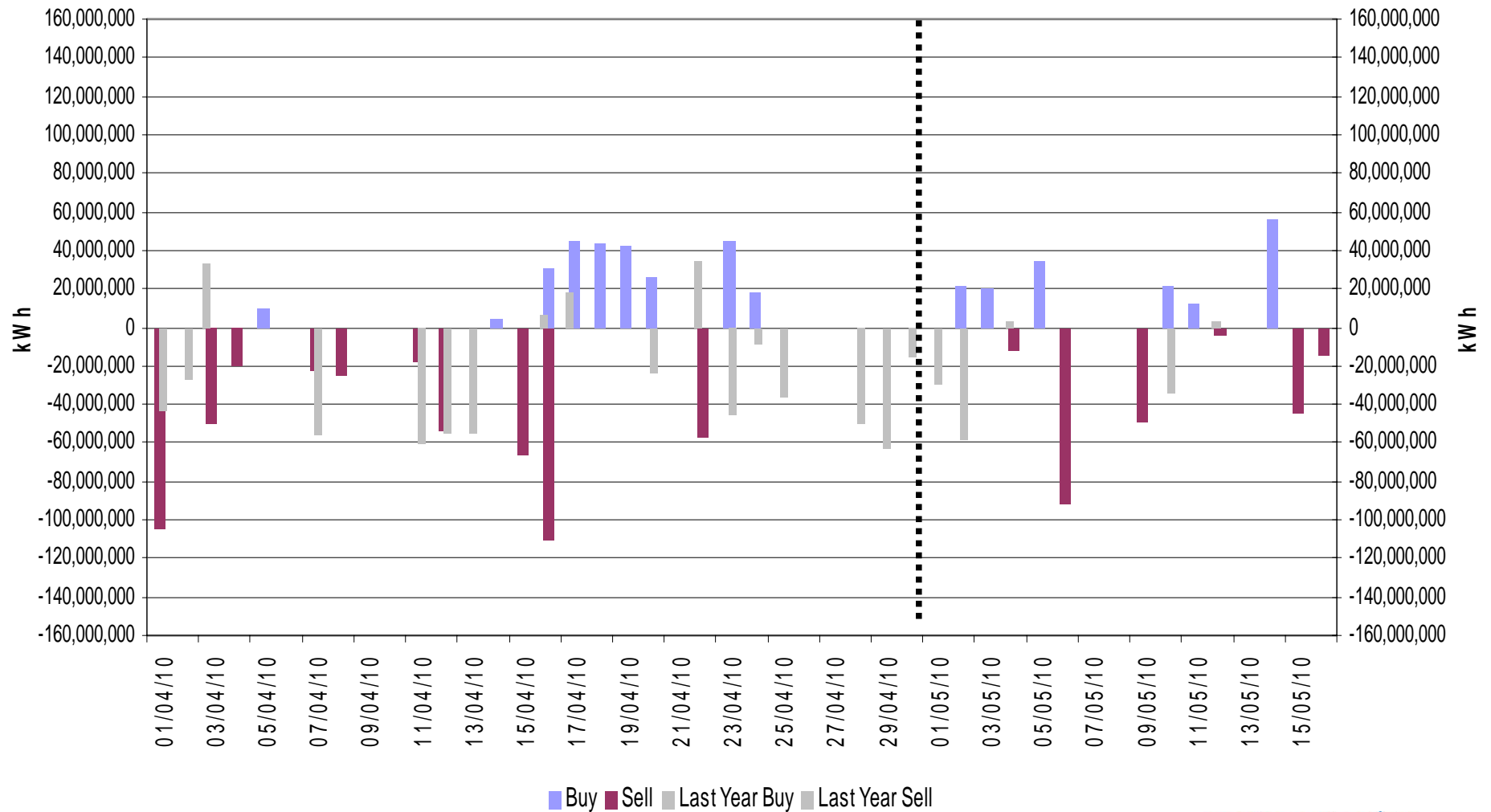
Buys and Sells by Month
From April 2009 to April 2010



Transporter Energy Traded on the OCM

Buys and Sells by Day

From 1-April-2010 to 15-May-2010



Days of Default SMP Prices

From 01-April-2010 to 30-April-2010

Percentage of Days of Default SMP

SMP Buy

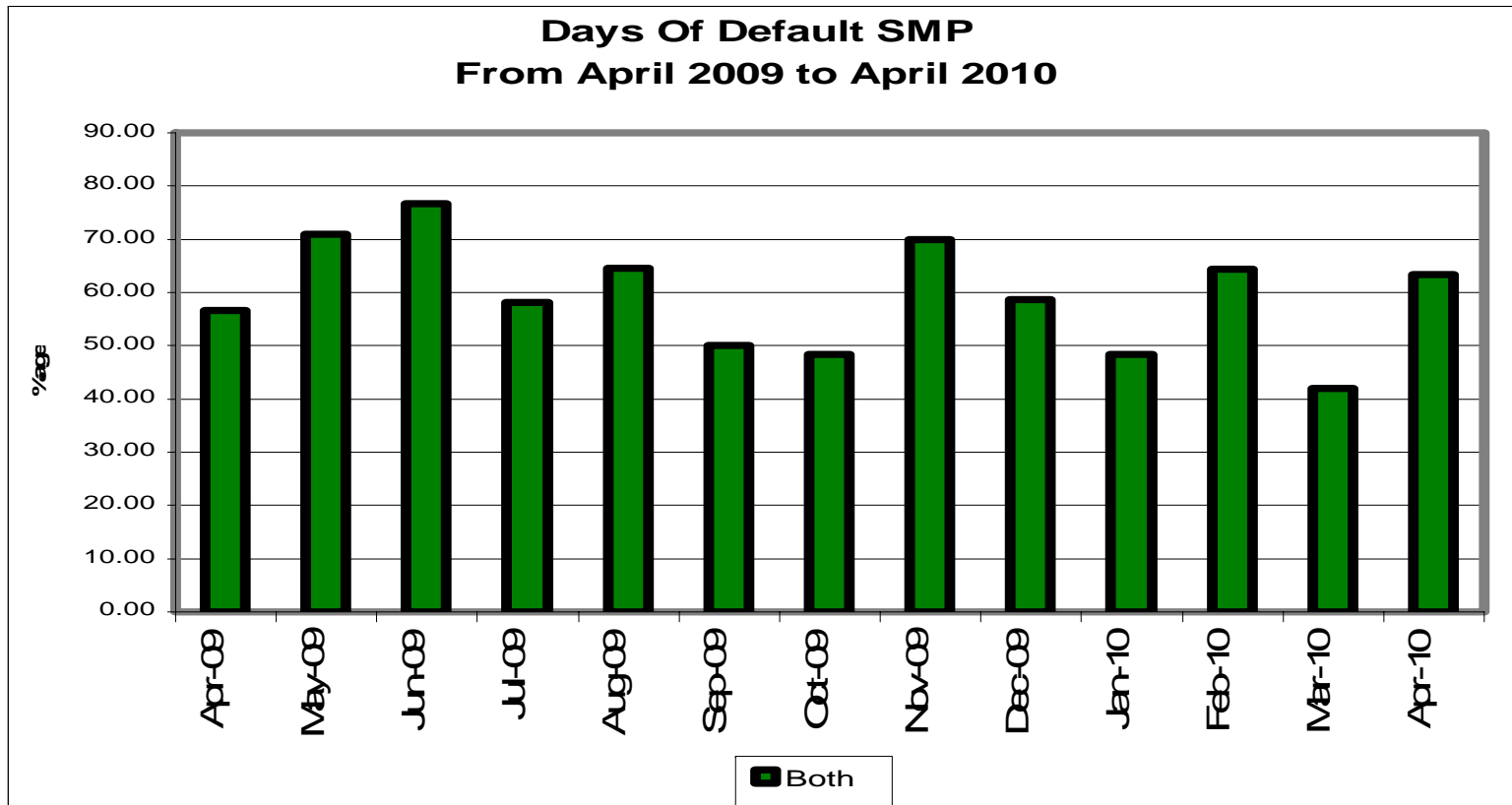
80.0%

SMP Sell

83.3%

Both

63.3%

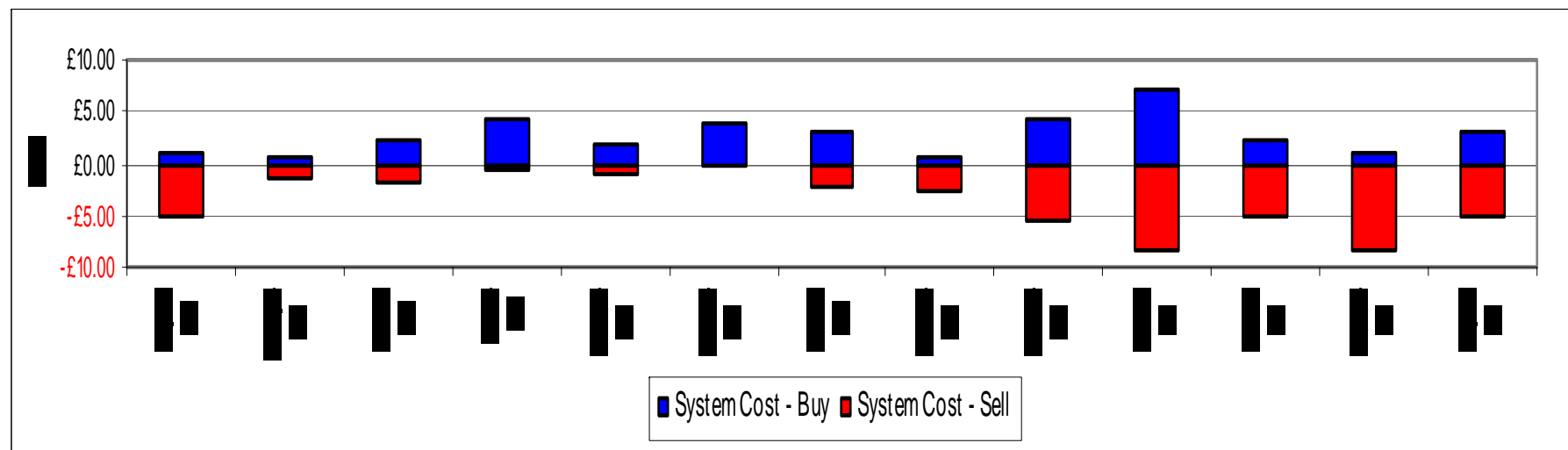


Transporter Actions on OCM Mechanism

Revenues / Costs

From 01-October-2009 to 30-April-2010

	Quantity (TWh)	Average Price (p/KWh)	Average Price (p/therm)	Cost (£m)
System Buy	1.66	1.28	37.37	£21.16
System Sell	-3.56	1.04	30.40	-£36.94
Net Position	-1.9 Sell			-£15.78

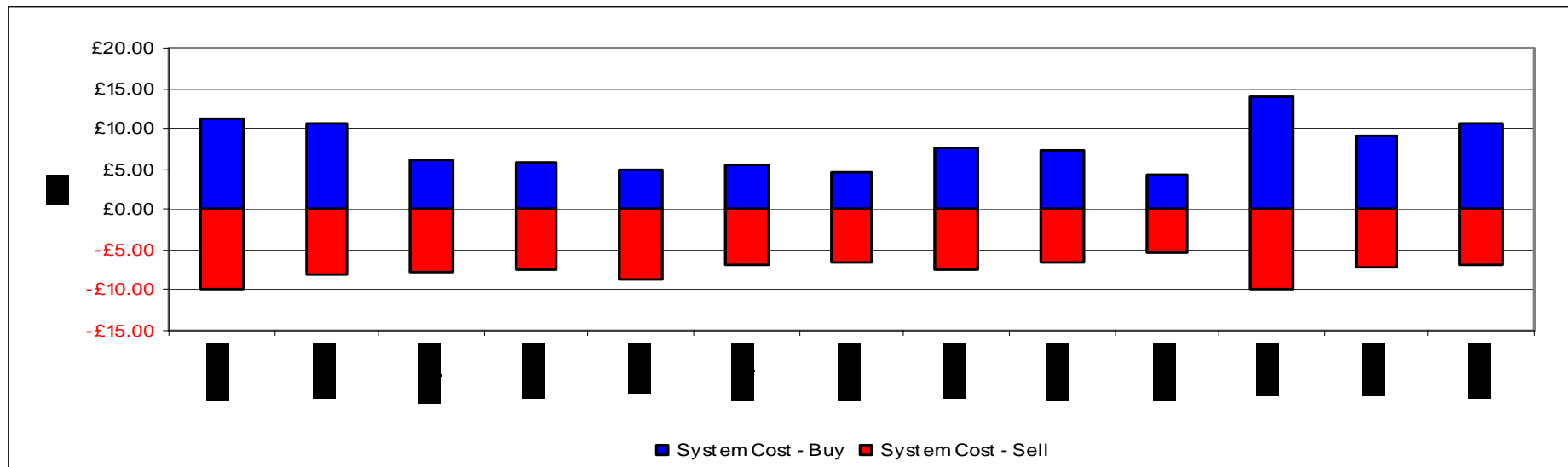


Shipper Imbalances

Revenues / Costs

From 01-October-2009 to 31-March-2010

System	Quantity (TWh)	Average Price (p/KWh)	Average Price (p/therm)	Cost £m
System Buy Shipper overdelivery/cost to neutrality	5.88	1.02	29.78	£59.78
System Sell Shipper underdelivery/revenue to neutrality	-4.33	1.10	32.20	-£47.55
Net Position	1.55 Buy			£12.23



Scheduling Revenues

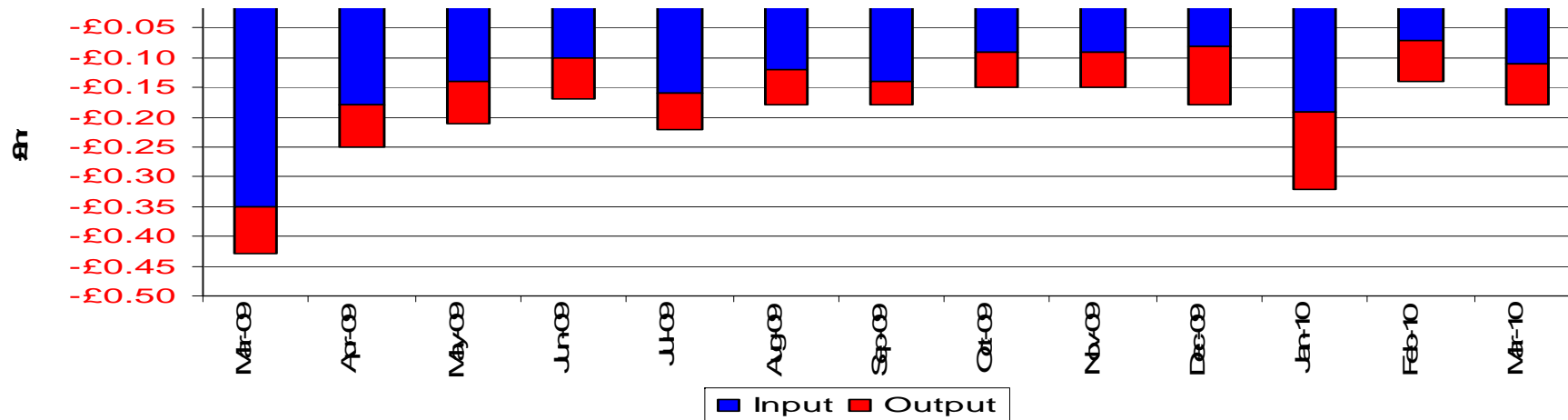
From 01-October-2009 to 31-March-2010

Cost £m

Input -£0.63

Output -£0.49

Total -£1.12

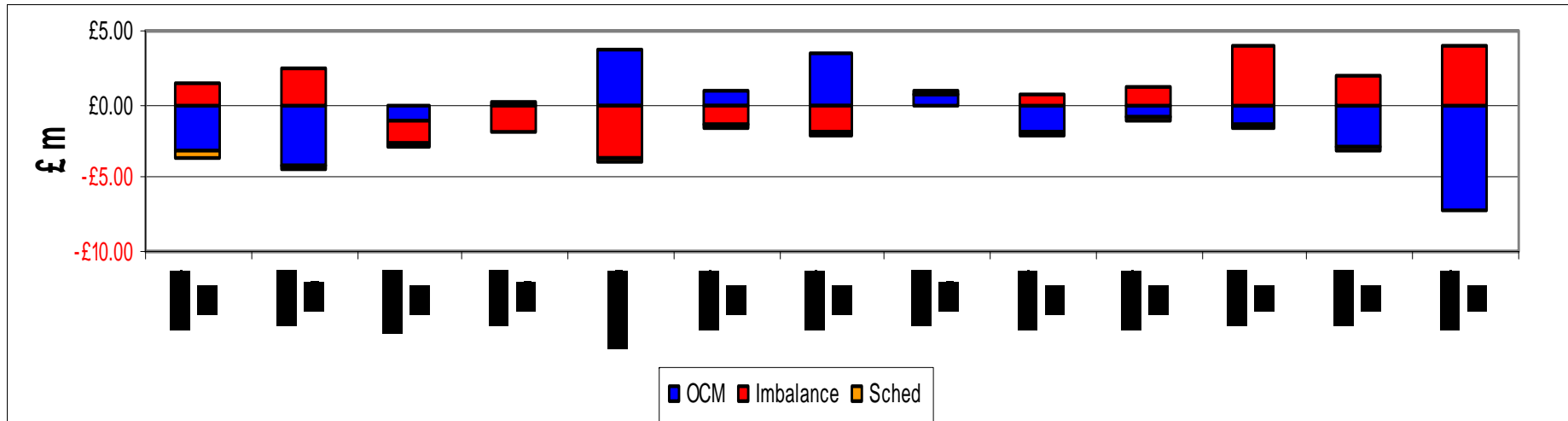


Balancing Costs

From 01-October-2009 to 31-March-2010

	£m
Transporter actions on OCM	-15.78
Imbalance Charge	12.23
Scheduling Charge	-1.12
Balancing Cost	-4.67

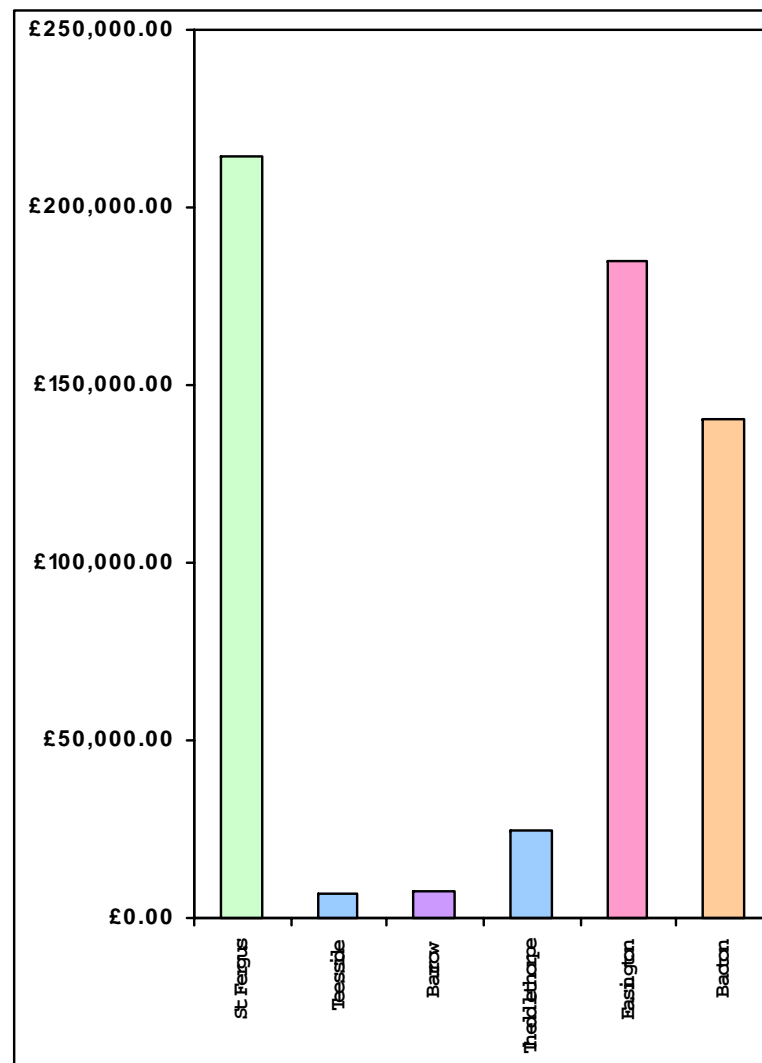
(0.0007p/KWh or 0.0194p/Therm of Throughput)



Capacity Neutrality – Revenues From DSEC & DAI

From 01 April 2009 to 31 March 2010

ASEP	Revenue
St Fergus	-£214,116.47
Teesside	-£7,002.55
Barrow	-£7,379.50
Theddlethorpe	-£24,633.92
Easington	-£185,111.24
Bacton	-£140,519.07
Other	-£127,123.08
TOTAL	-£705,885.83



Capacity Neutrality – Prompt Buy Backs

From 01 April 2009 to 31 March 2010

ASEP	Cost	No.of days	Volume (kWh)
St Fergus	£0	0	0
Teesside	£0	0	0
Barrow	£0	0	0
Theddlethorpe	£0	0	0
Easington	£0	0	0
Bacton	£0	0	0
TOTAL	£0	0	0

Capacity Neutrality – Capacity Management Agreement (including RMTTSEC)

From 01 April 2009 to 31 March 2010

Month	Cost
April 2009	£11,589.17
May 2009	£0.00
June 2009	£21,492.00
July 2009	£0.00
August 2009	£0.00
September 2009	£0.00
October 2009	£0.00
November 2009	£0.00
December 2009	£0.00
January 2010	£0.00
February 2010	£0.00
March 2010	£0.00
Total	£33,081.17

Capacity Neutrality – Revenues From Entry Capacity Overruns

From 01 April 2009 to 31 March 2010

Month	Revenue
April 2009	-£31,271.01
May 2009	-£154,266.59
June 2009	-£4,201.89
July 2009	-£345,143.81
August 2009	-£176,913.79
September 2009	-£2,992.58
October 2009	-£1,181.58
November 2009	-£94,389.80
December 2009	-£143.13
January 2010	-£3,219.25
February 2010	-1,471.40
March 2010	-172.54
Total	-£815,367.37

Capacity Neutrality – Net Cost/Revenue

From 01 April 2009 to 31 March 2010

DSEC/DAI Revenue	-£705,885.83
Buy back costs	£0.00
Capacity Management Agreement	£33,081.17
Entry Capacity Overrun Revenue	-£815,367.37
Net Revenue	-£1,488,172.03