

Operational Overview

Nolan Robertson

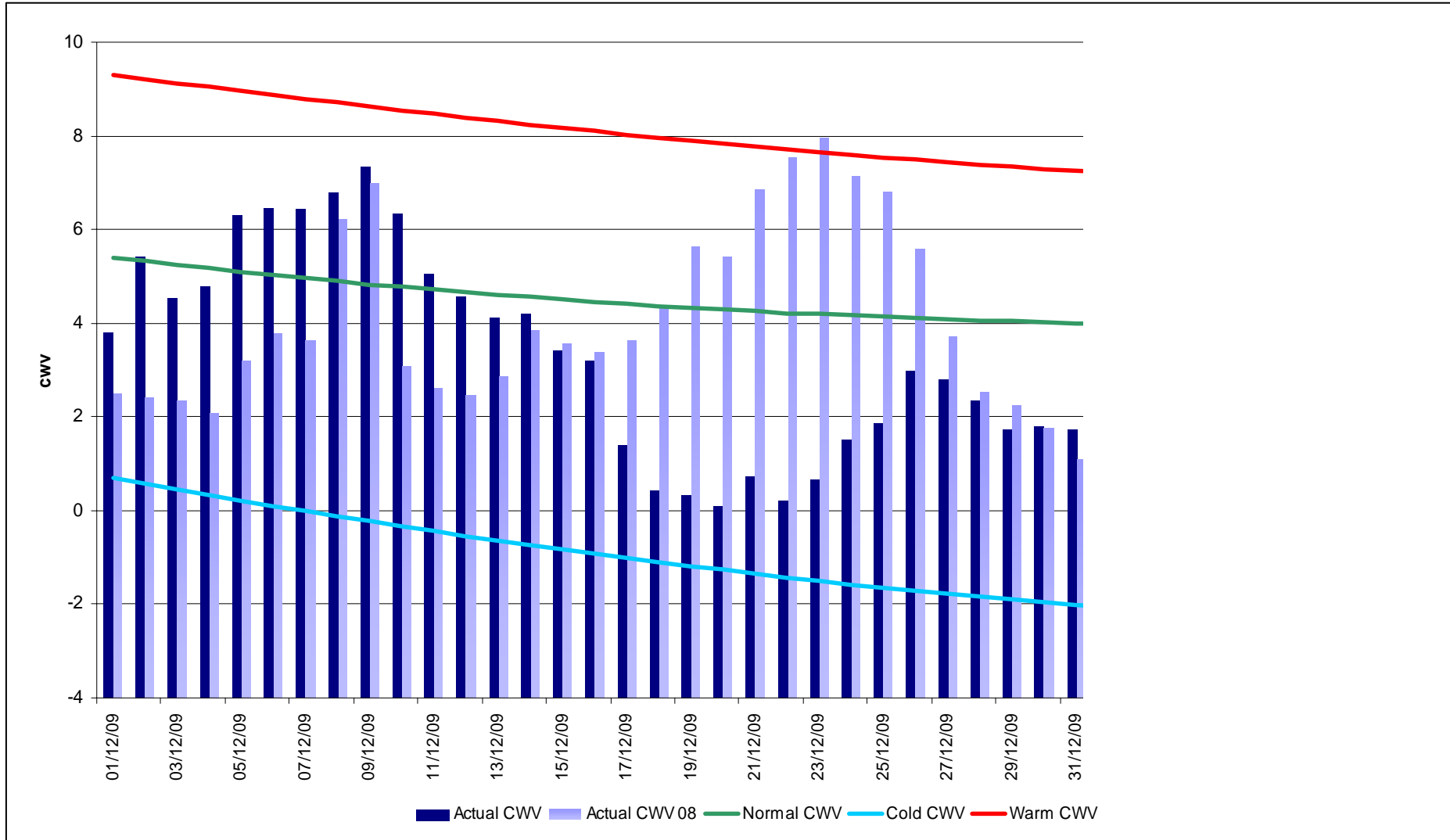


nationalgrid

The power of action.™

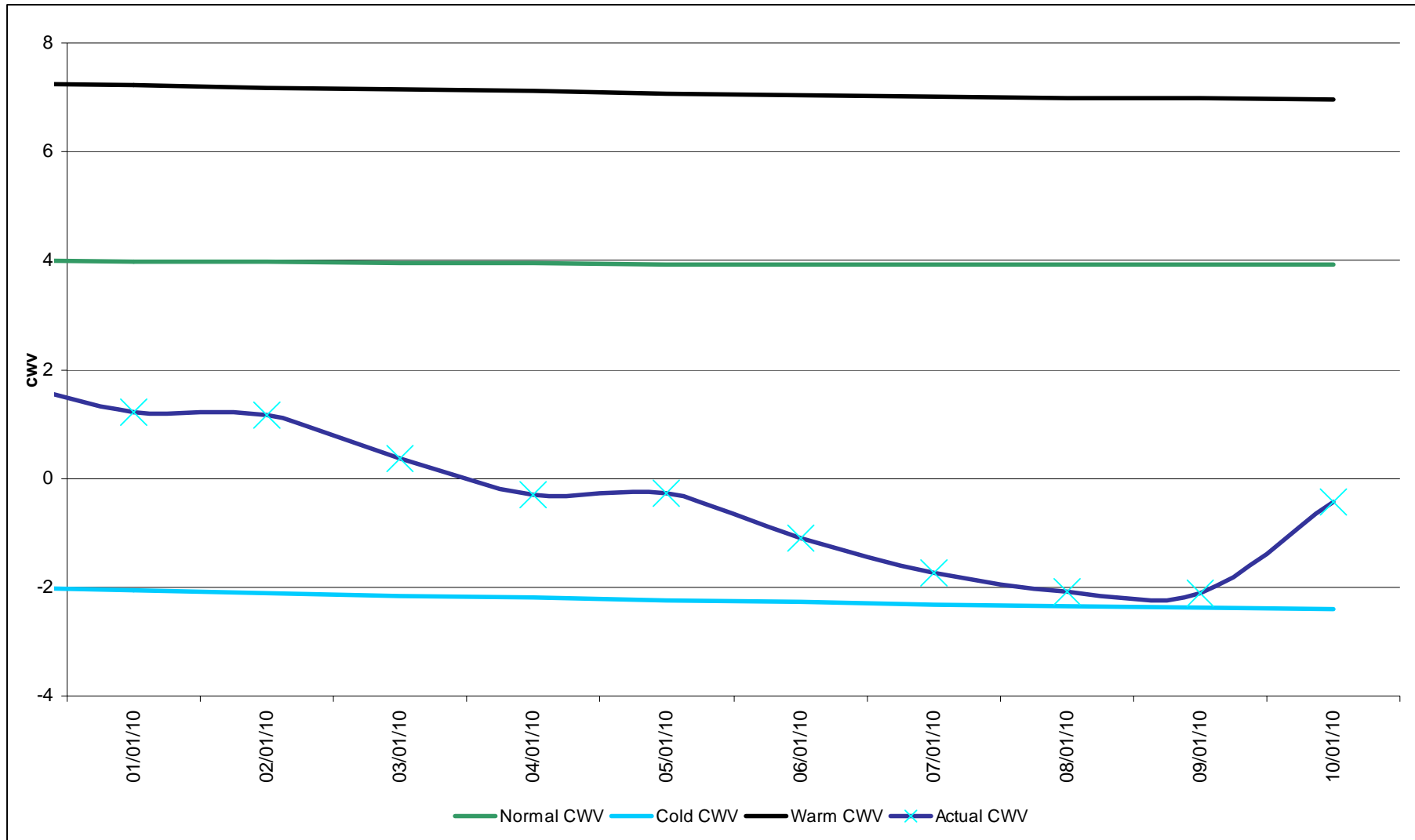
Composite Weather Variables

From 01-December-2009 to 10-January-2010



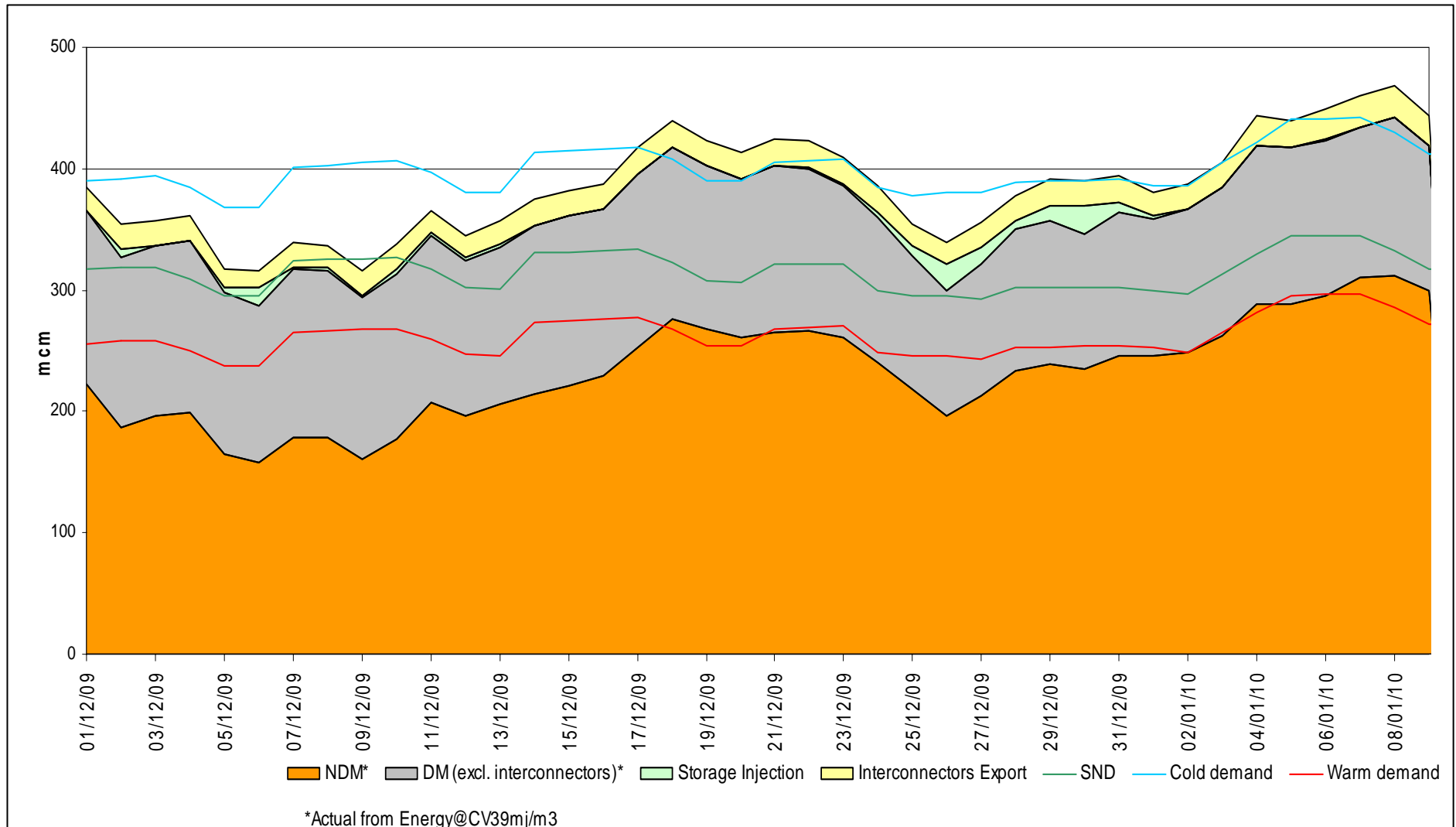
Composite Weather Variables

From 01-January-2010 to 10-January-2010



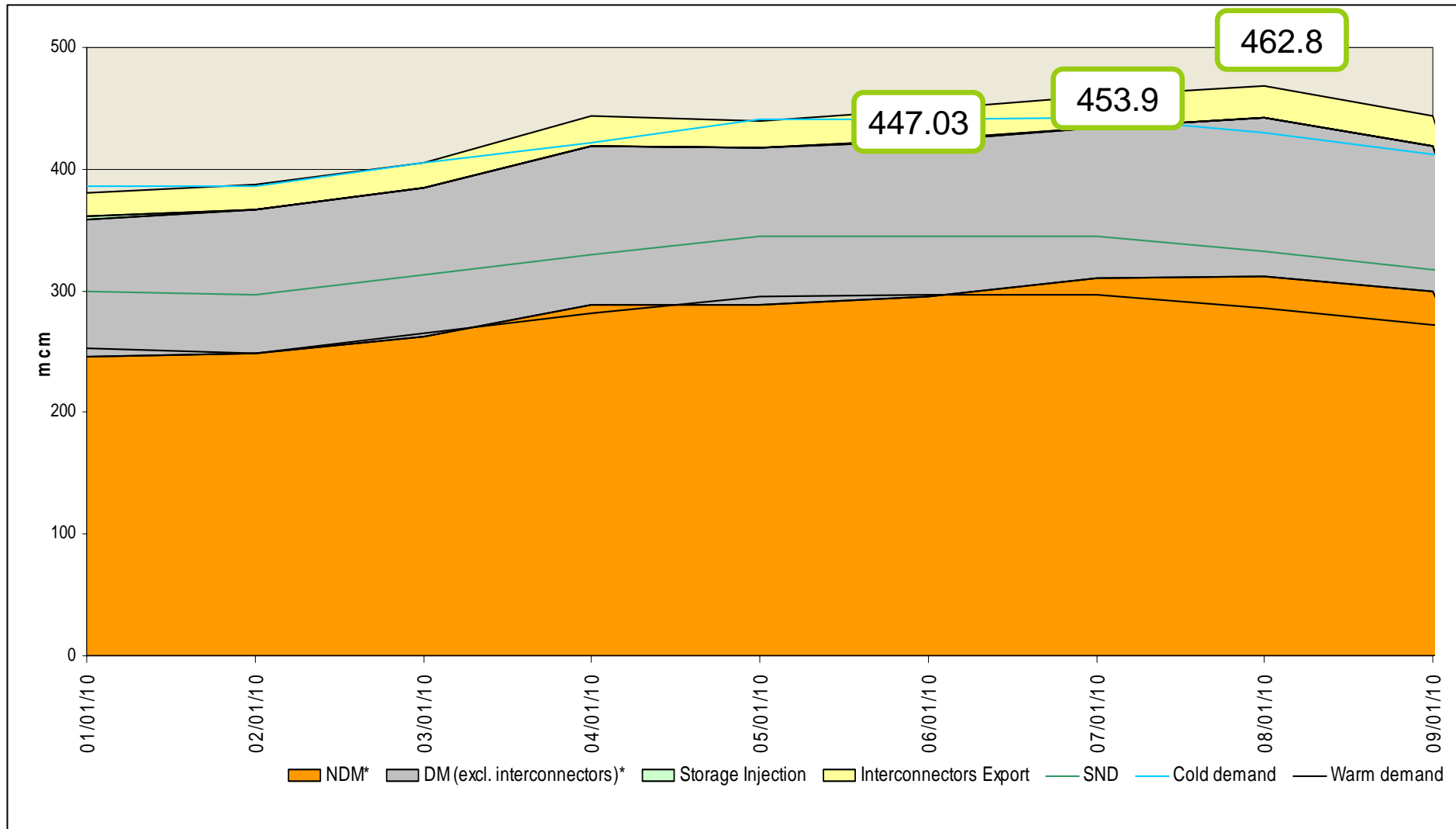
Gas Demand Breakdown

From 01-December-2009 to 09-January-2010



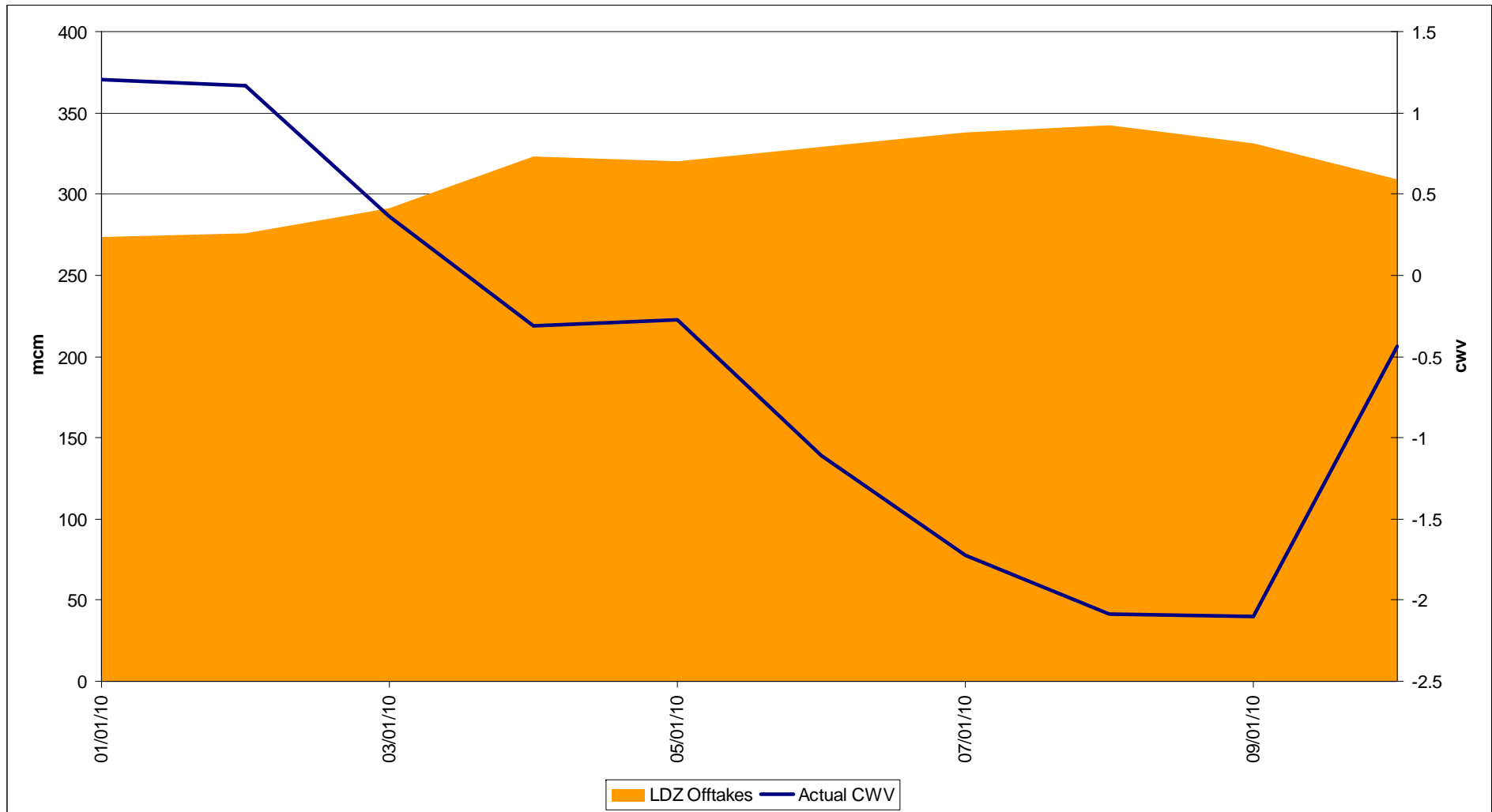
Gas Demand Breakdown

From 01-January-2010 to 09-January-2010



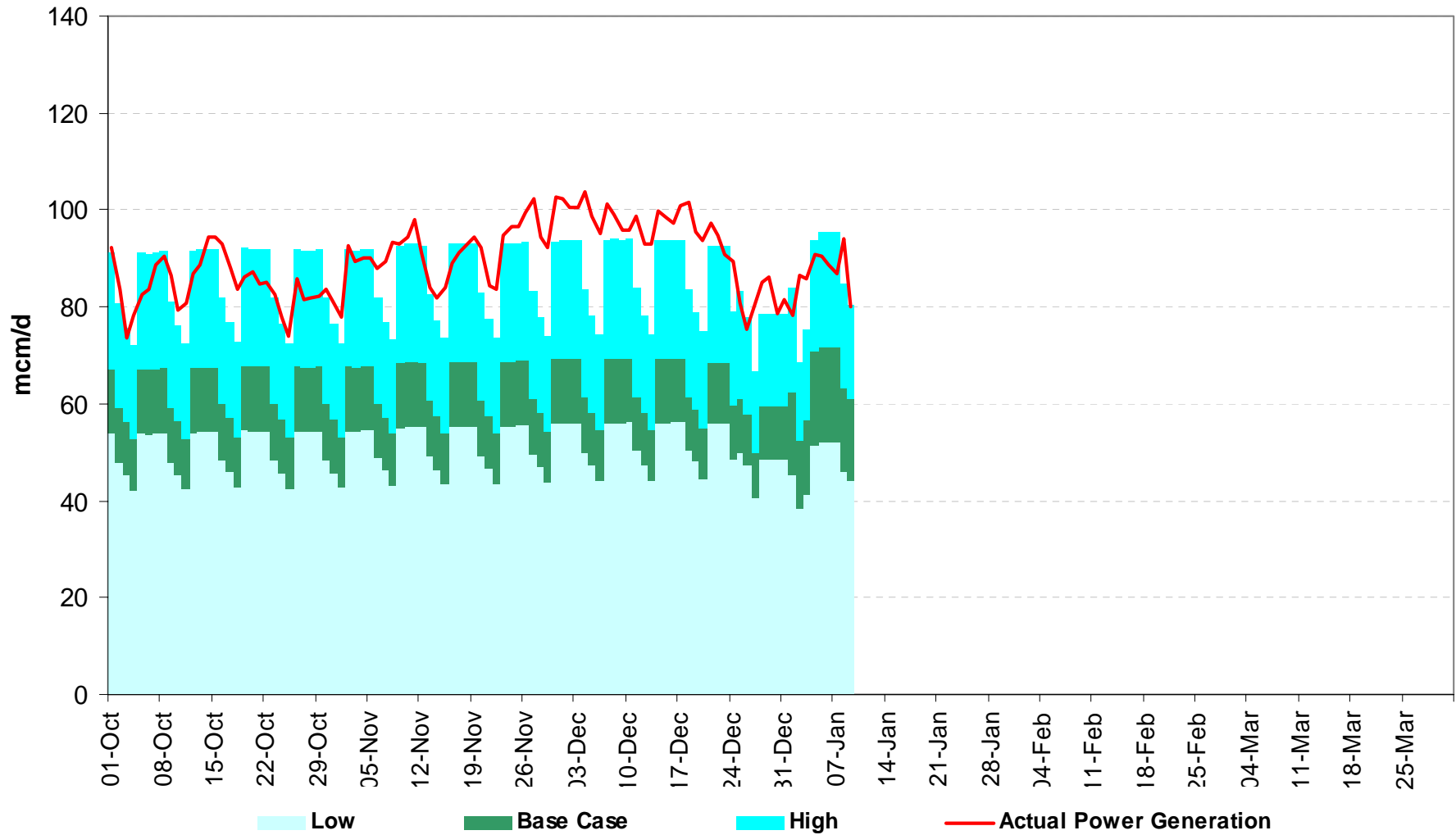
Actual CWVs vs LDZ Offtake Demand

From 01-January-2010 to 10-January-2010



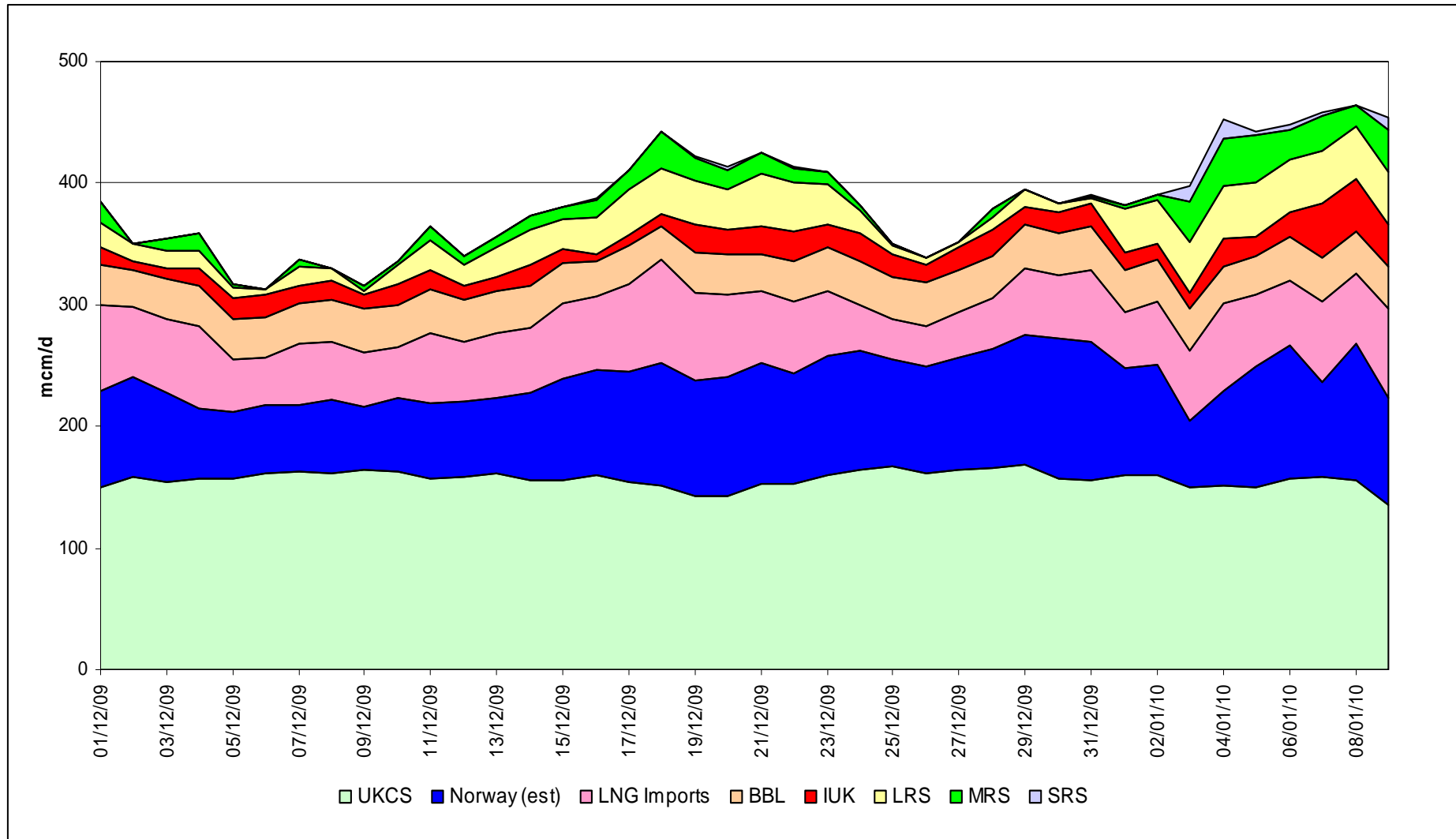
Gas Consumption for Power Generation

Fig. 11



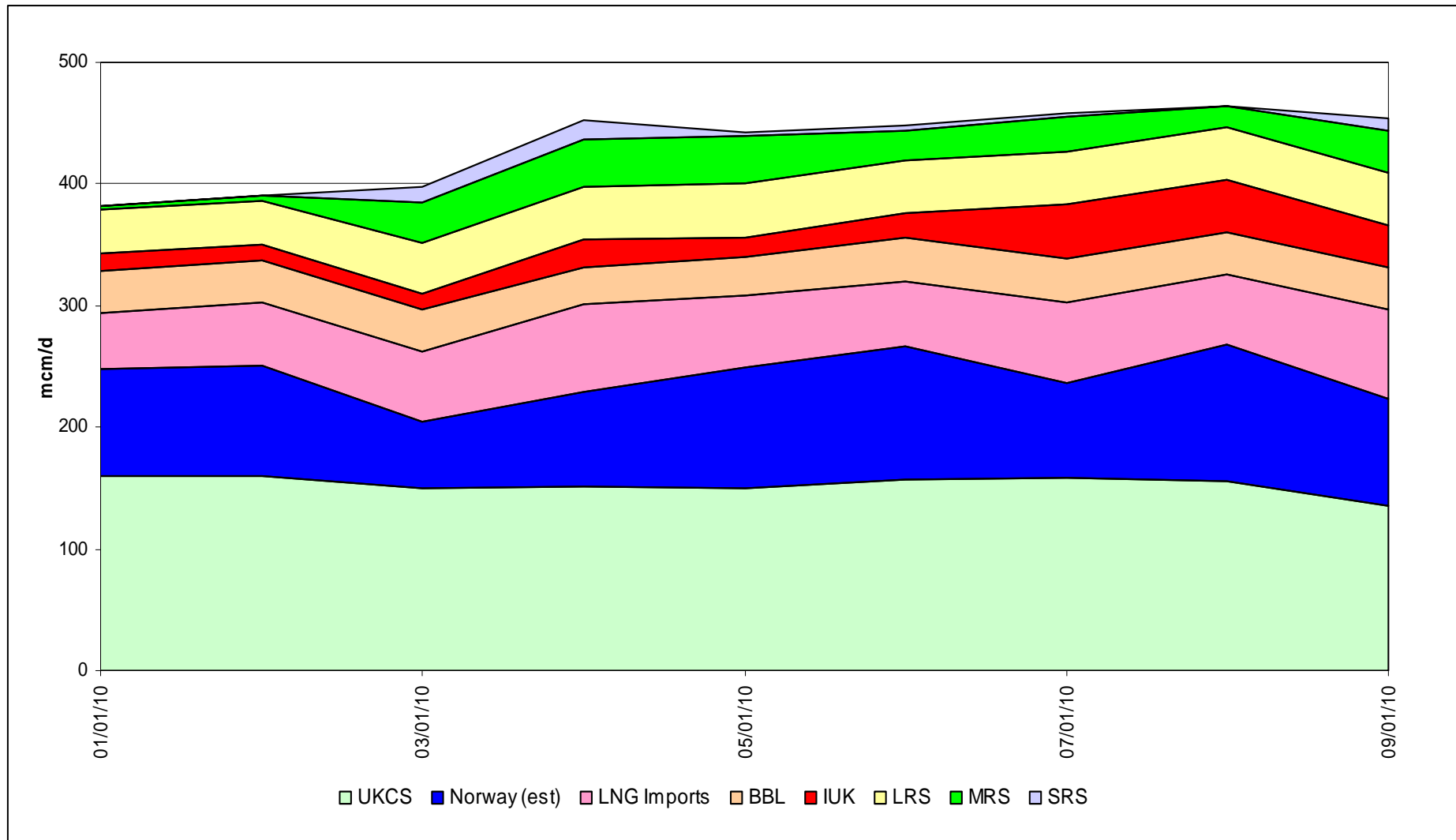
Gas Supply Breakdown

From 01-December-2009 to 09-January-2010



Gas Supply Breakdown

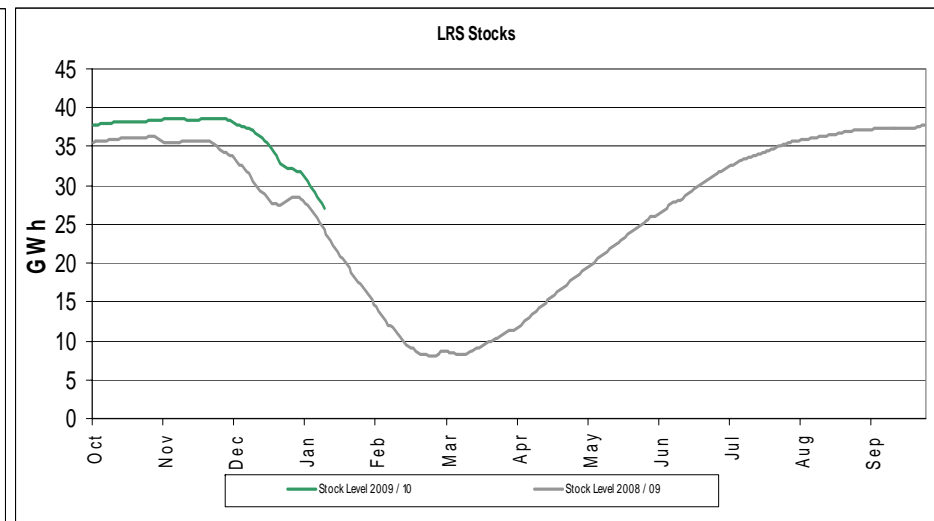
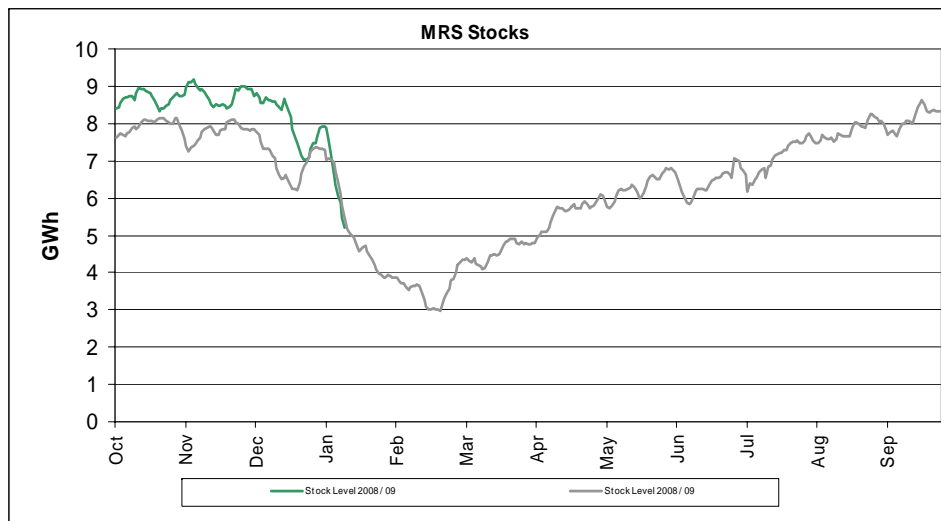
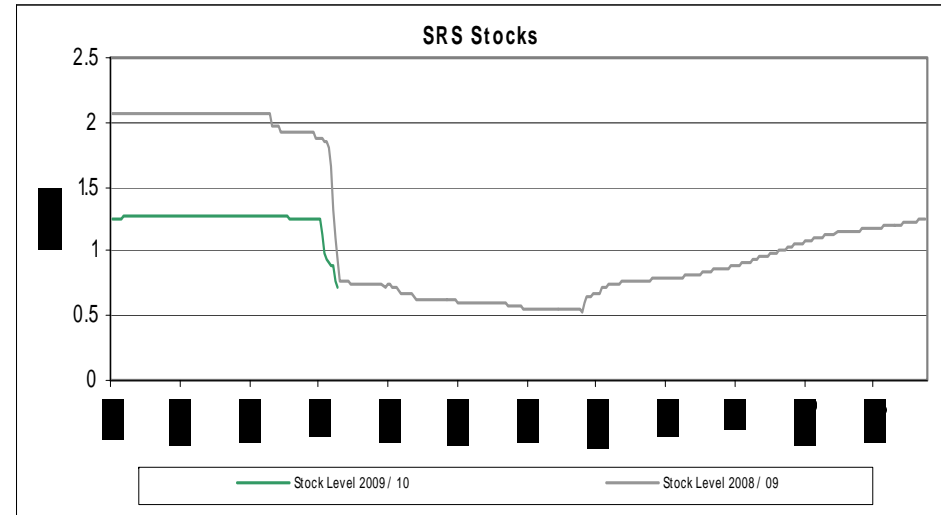
From 01-January-2010 to 09-January-2010



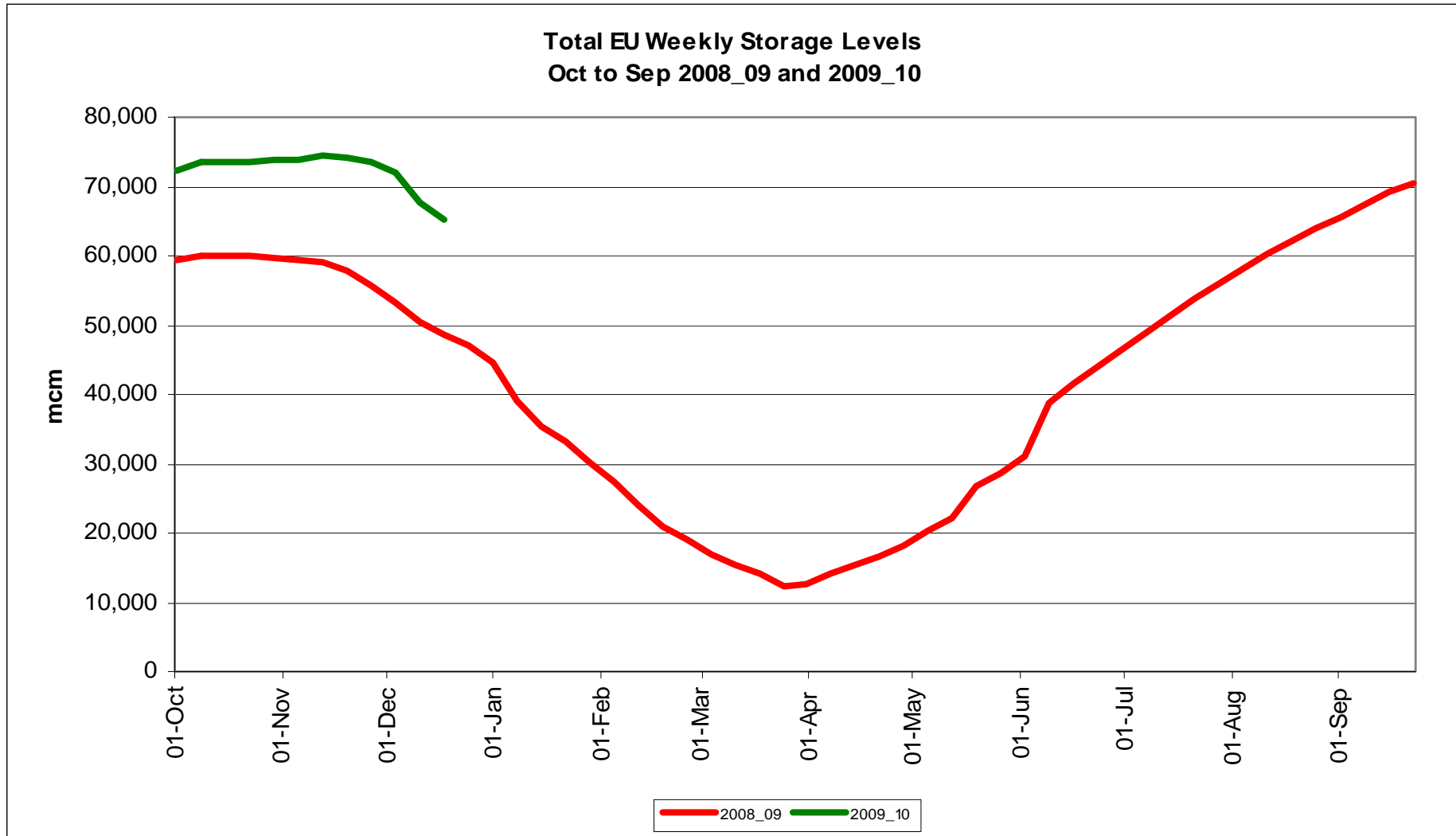
Storage Stocks - UK

From 01-October-2009 to 30-November-2010

- The Cold weather has coincided with withdrawals at all Storage types, all types of storage stocks are now at similar levels to last year.



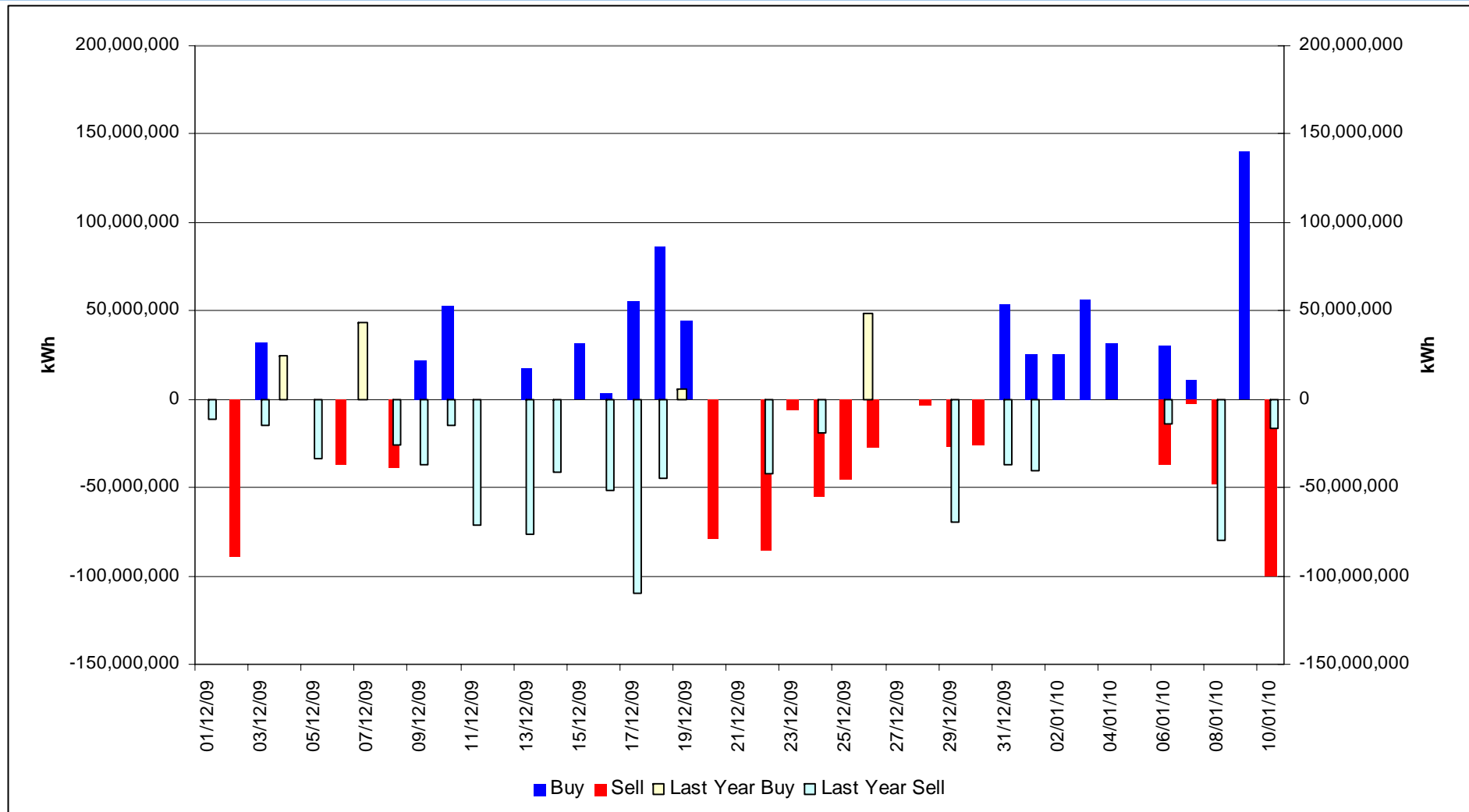
Storage Stocks - EU



Transporter Energy Traded on the OCM

Buys and Sells by Day

From 01-December-2009 to 10-January-2010



Days of Default SMP Prices

From 01-December-2009 to 31-December-2009

Percentage of Days of Default SMP

SMP Buy

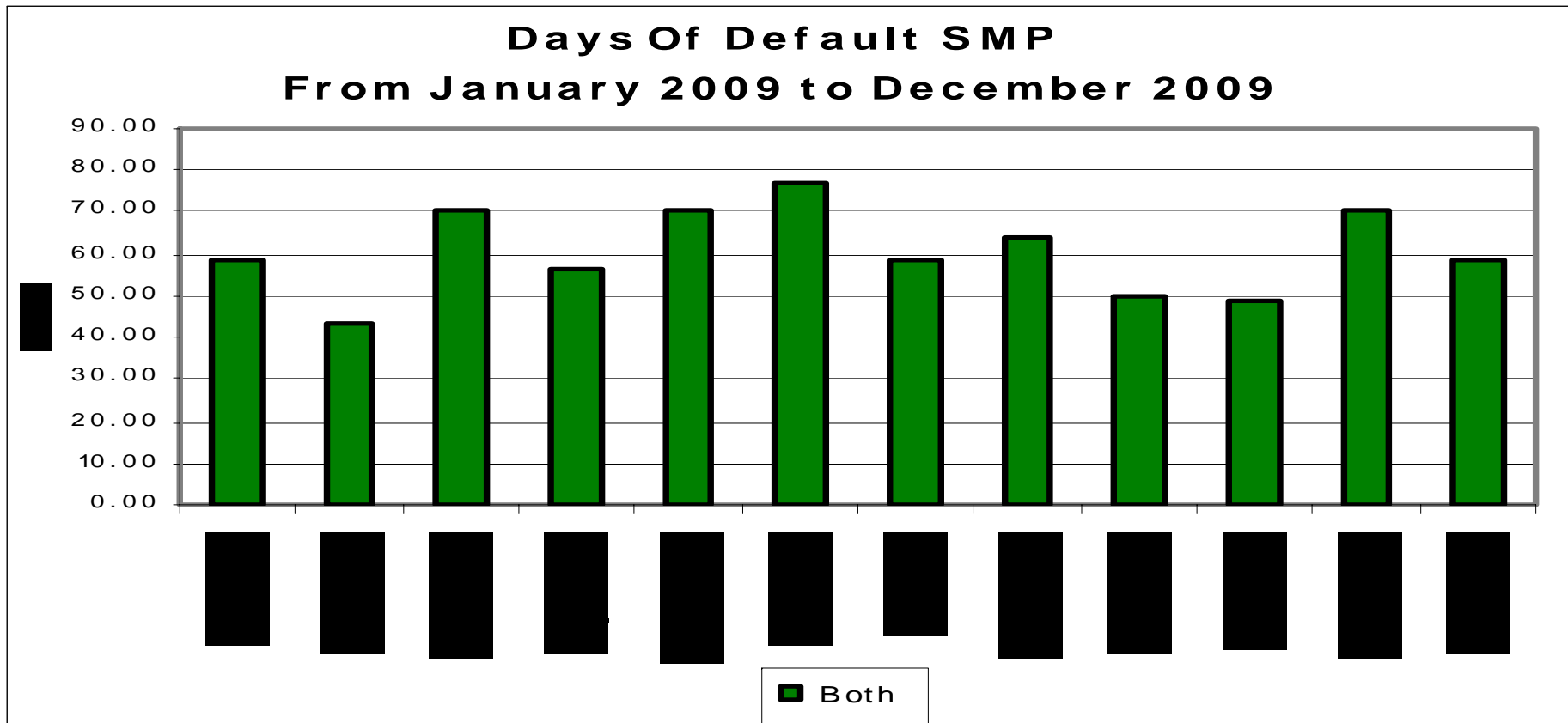
SMP Sell

Both

82.8%

74.2%

58.6%



nationalgrid

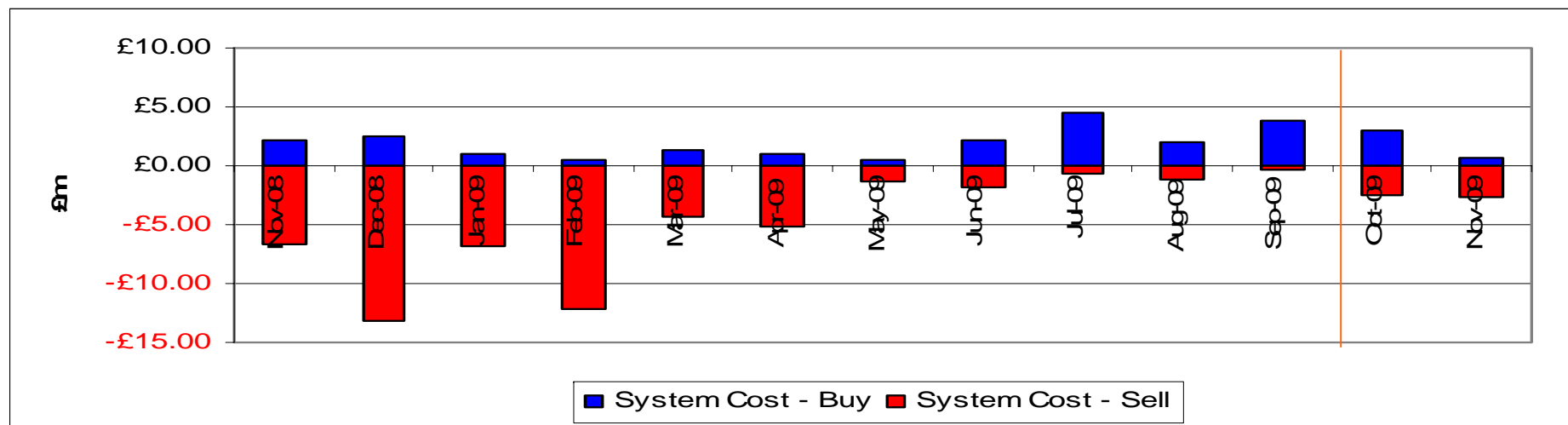
The power of action.

Transporter Actions on OCM Mechanism

Revenues / Costs

From 01-October-2009 to 30-November-2009

	Quantity (TWh)	Average Price (p/KWh)	Average Price (p/therm)	Cost (£m)
System Buy	0.394	0.9391	27.51	£3.70
System Sell	-0.629	0.7967	23.54	-£5.01
Net Position	-0.235 Sell			-£1.31

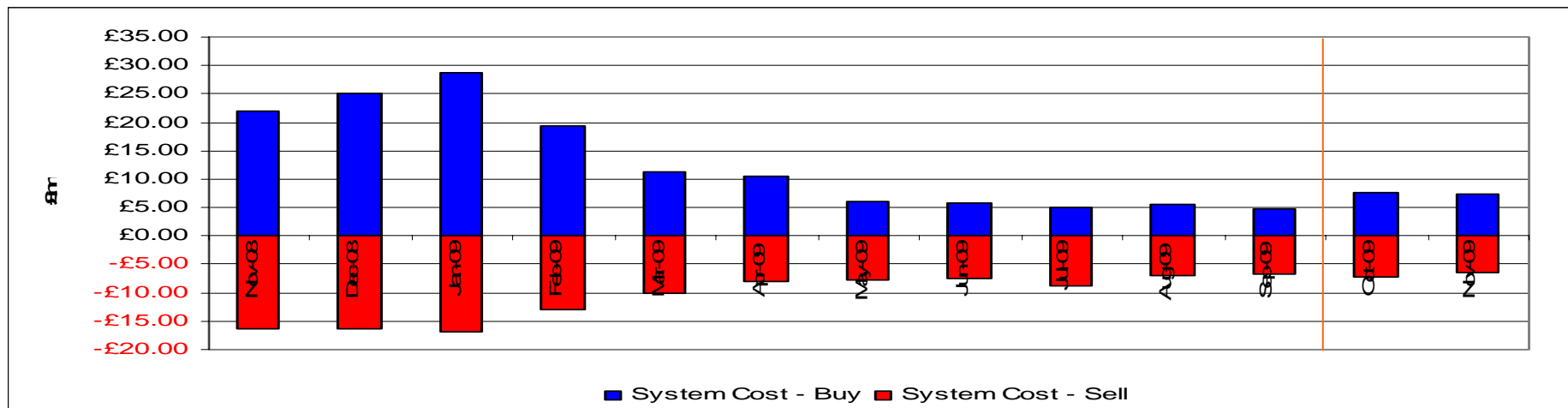


Imbalance Gas

Revenues / Costs

From 01-October-2009 to 30-November-2009

System	Quantity (TWh)	Average Price (p/KWh)	Average Price (p/therm)	Cost £m
System Buy	1.84	0.8080	23.67	£14.90
System Sell	-1.59	0.8703	25.50	-£13.85
Net Position	0.25 Buy			£1.05



Scheduling Revenues

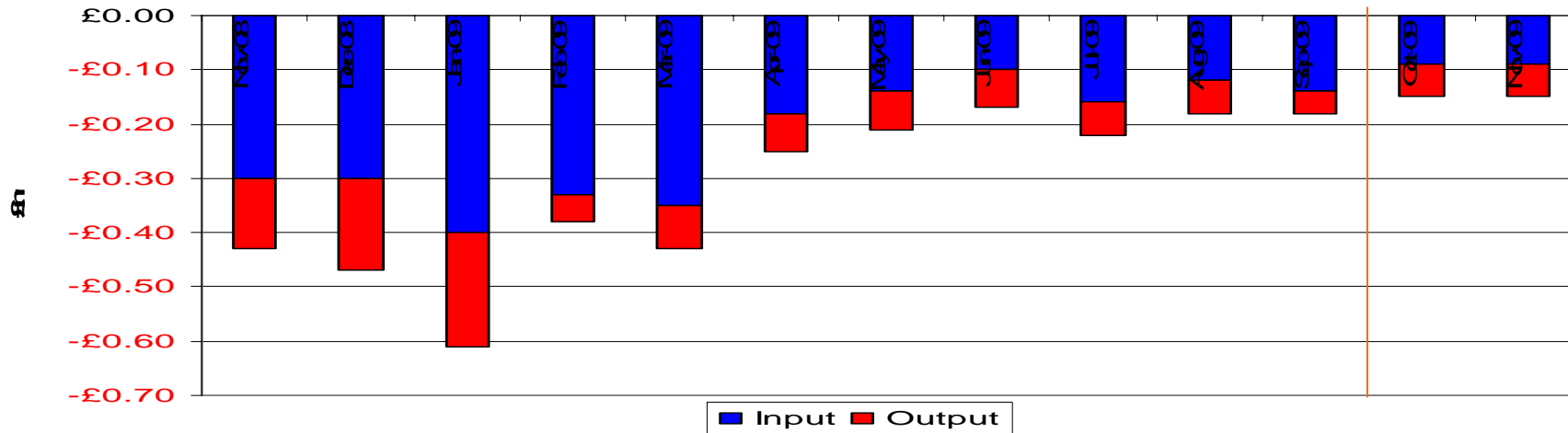
From 01-October-2009 to 30-November-2009

Cost £m

Input -£0.18

Output -£0.12

Total -£0.30

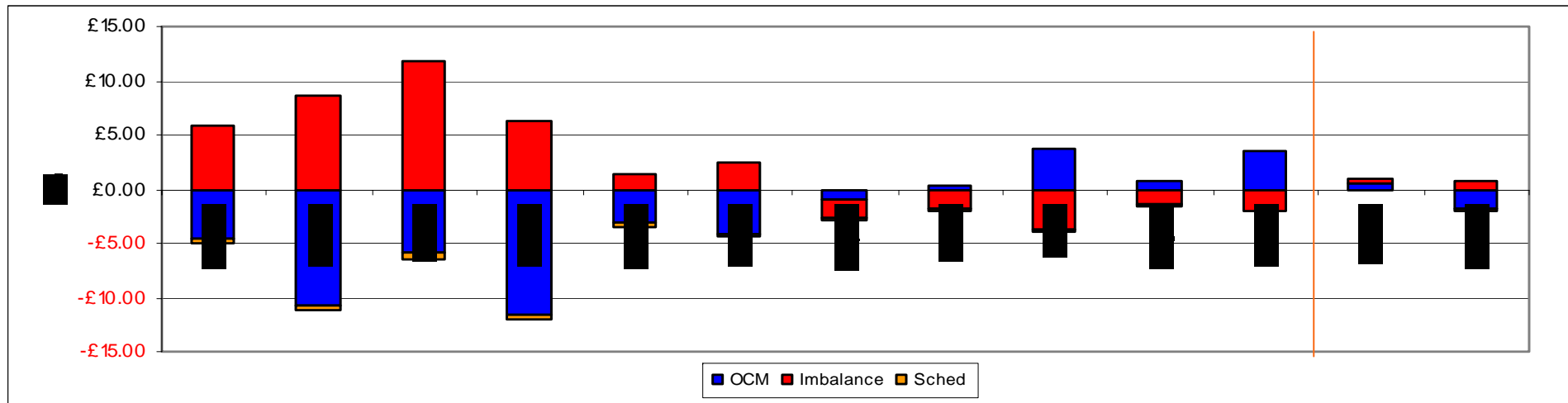


Balancing Costs

From 01-October-2009 to 30-November-2009

	£m
OCM/Flex Gas	-1.31
Imbalance Gas	1.06
Scheduling	-0.15
<hr/>	
Balancing Cost	-0.40

(0.0003p/KWh or 0.0084p/Therm of Throughput)



Capacity Neutrality – Revenues From DSEC & DAI

From 01 April 2009 to 30 November 2009

ASEP	Revenue
St Fergus	£180,931.34
Teesside	£4,342.32
Barrow	£4,501.50
Theddlethorpe	£17,449.81
Easington	£127,527.94
Bacton	£122,741.03
Other	£35,529.99
TOTAL	£493,023.93

Capacity Neutrality – Prompt Buy Backs

From 01 April 2009 to 30 November 2009

ASEP	Cost	No.of days	Volume (kWh)
St Fergus	£0	0	0
Teesside	£0	0	0
Barrow	£0	0	0
Theddlethorpe	£0	0	0
Easington	£0	0	0
Bacton	£0	0	0
TOTAL	£0	0	0

Capacity Neutrality – Revenues From Overruns

From 01 April 2009 to 30 November 2009

Month	Revenue
April 2009	-£31,271.01
May 2009	-£154,266.59
June 2009	-£4,201.89
July 2009	-£345,143.81
August 2009	-£176,913.79
September 2009	-£2,992.58
October 2009	-£1,181.58
November 2009	-£94,389.80
Total	-£810,361.05

Capacity Neutrality – Capacity Management Agreement (including RMTTSEC)

From 01 April 2009 to 30 November 2009

Month	Cost
April 2009	£11,589.17
May 2009	£0.00
June 2009	£35,442.00
July 2009	£0.00
August 2009	£0.00
September 2009	£0.00
October 2009	£0.00
November 2009	£0.00
Total	£47,031.17

Capacity Neutrality – Net Cost/Revenue

From 01 April 2009 to 30 November 2009

DSEC/DAI Revenue	-£493,023.93
Buy back costs	+£0.00
Capacity Management Agreement	+£47,031.17
Overrun Revenue	-£810,361.05
Net Revenue	-£1,256,353.98