

# Operational Forum Meeting



**21 September 2017, 10:30AM**

**Radisson Grafton Hotel, 130 Tottenham Court Road, London.**

# System Management Principles Statement



- **Summary of balancing actions and breaches for June, July, and August 2017**
- **Performance compared to last year**

# Summary Report

1<sup>st</sup> January 2017 to 31<sup>st</sup> August 2017

---

	<b>June-17</b>	<b>July-17</b>	<b>Aug-17</b>
Total Number of Buy Actions	17	16	23
Total Number of Sell Actions	0	0	0
<b>Total</b>	<b>17</b>	<b>16</b>	<b>23</b>

	<b>Aug-17</b>	<b>Aug-16</b>
Number of Balancing Actions (Calendar year to date)	115	97

## Operational Overview

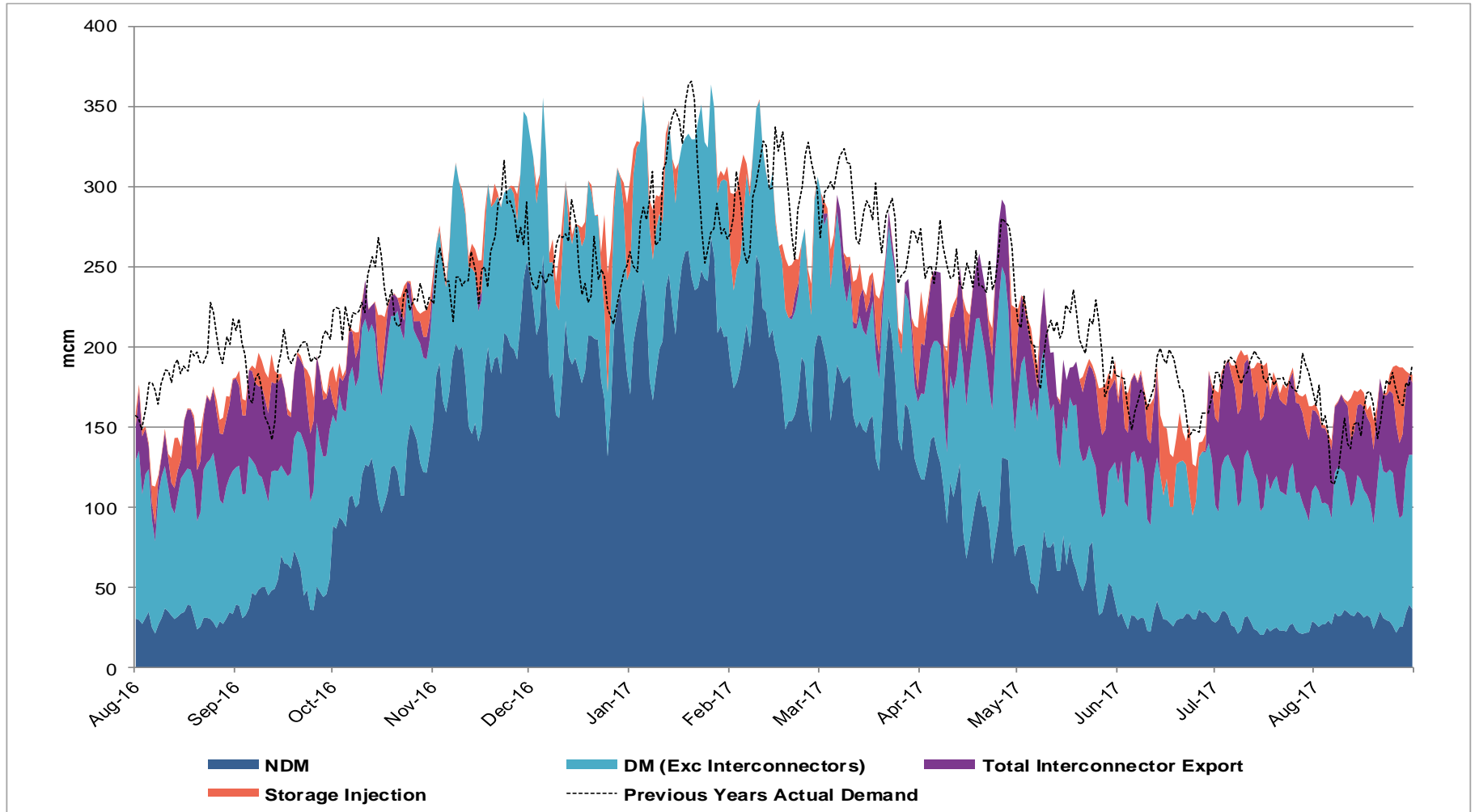


## Demands



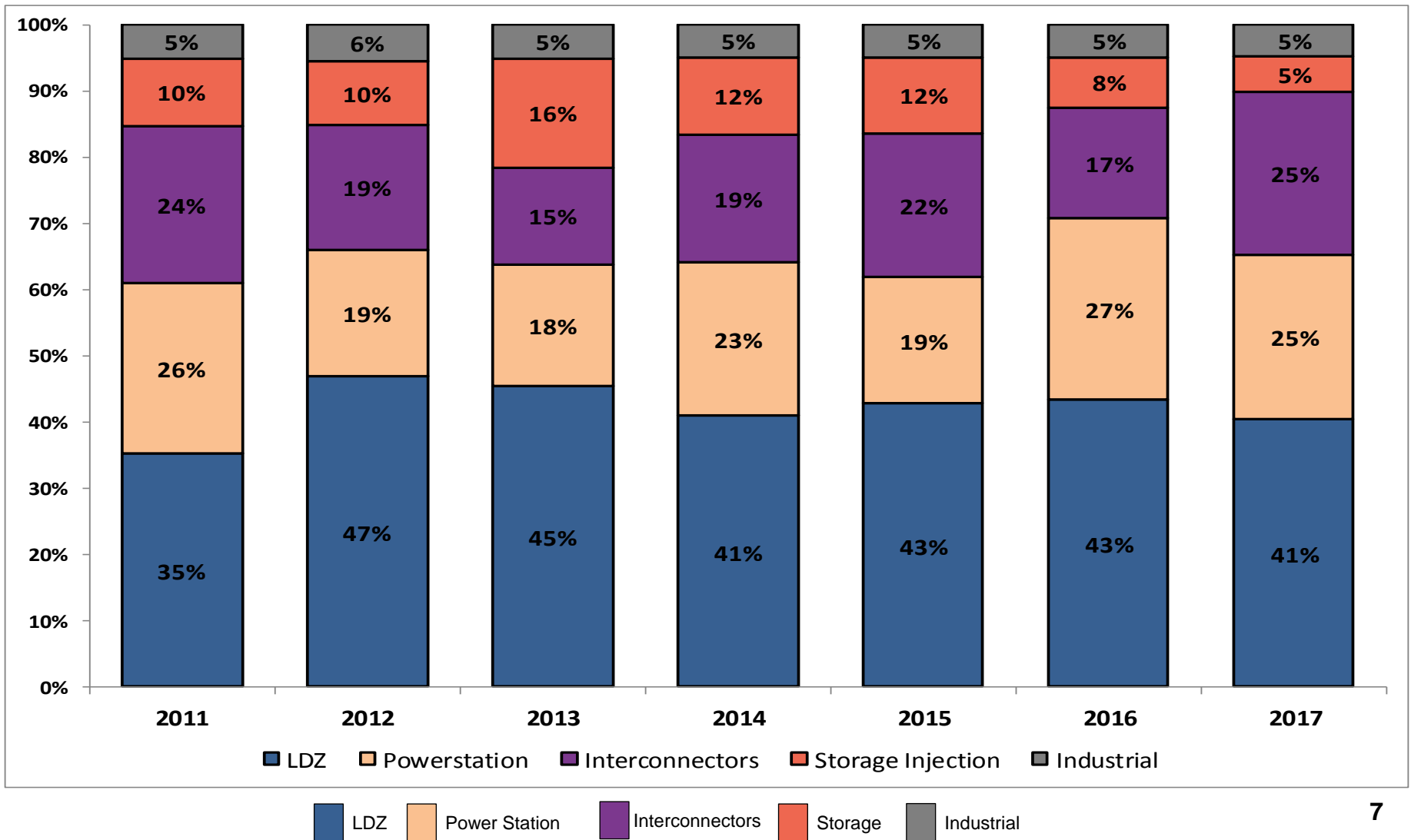
# Gas Demand Breakdown

1<sup>st</sup> Aug 2016 to 31<sup>st</sup> August 2017 vs Previous Year



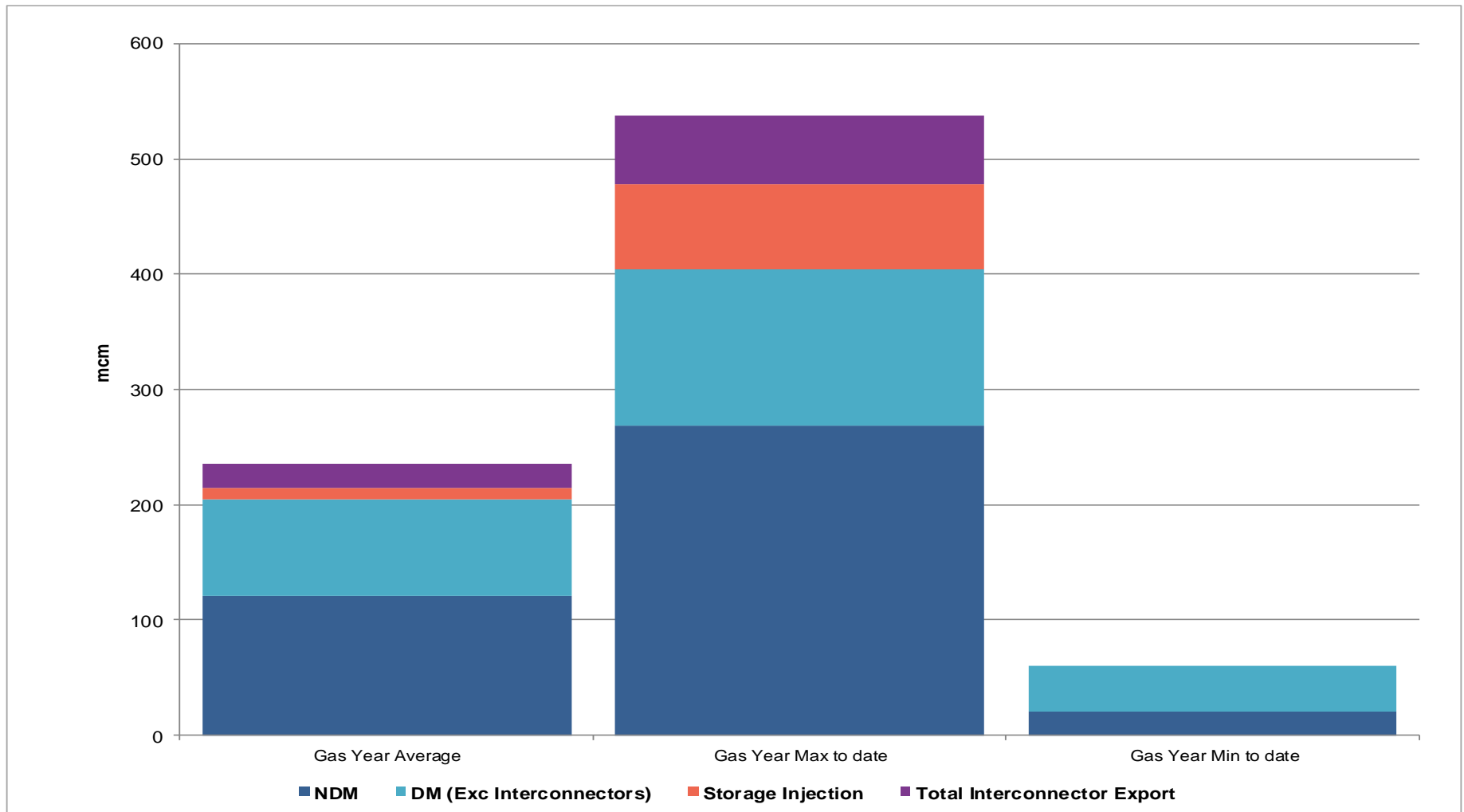
# Gas Demand Breakdown

1<sup>st</sup> April 2017 to 31<sup>st</sup> August 2017 vs Same Period in Previous Years



# Gas Demand Statistics

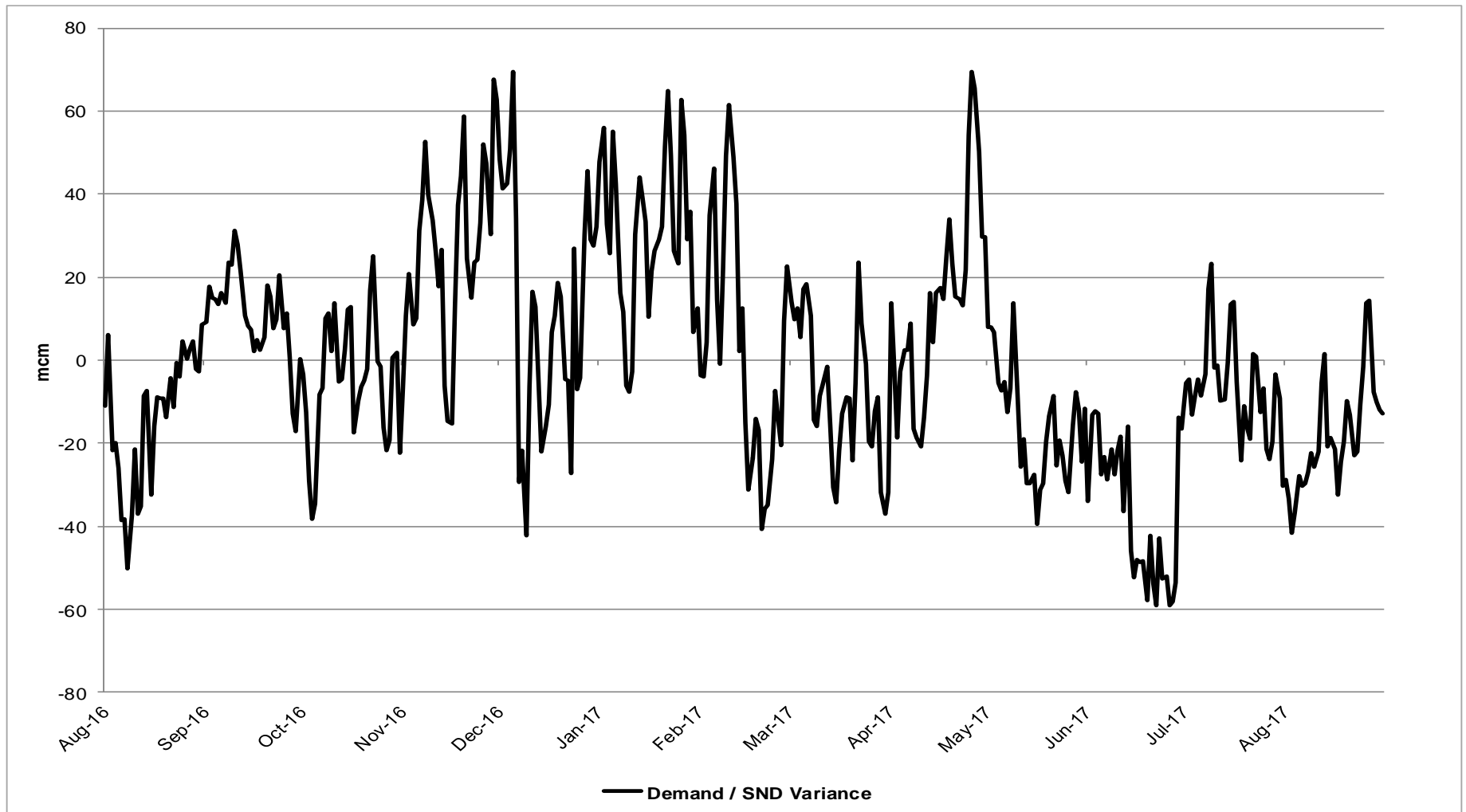
1<sup>st</sup> October 2016 to 31<sup>st</sup> August 2017





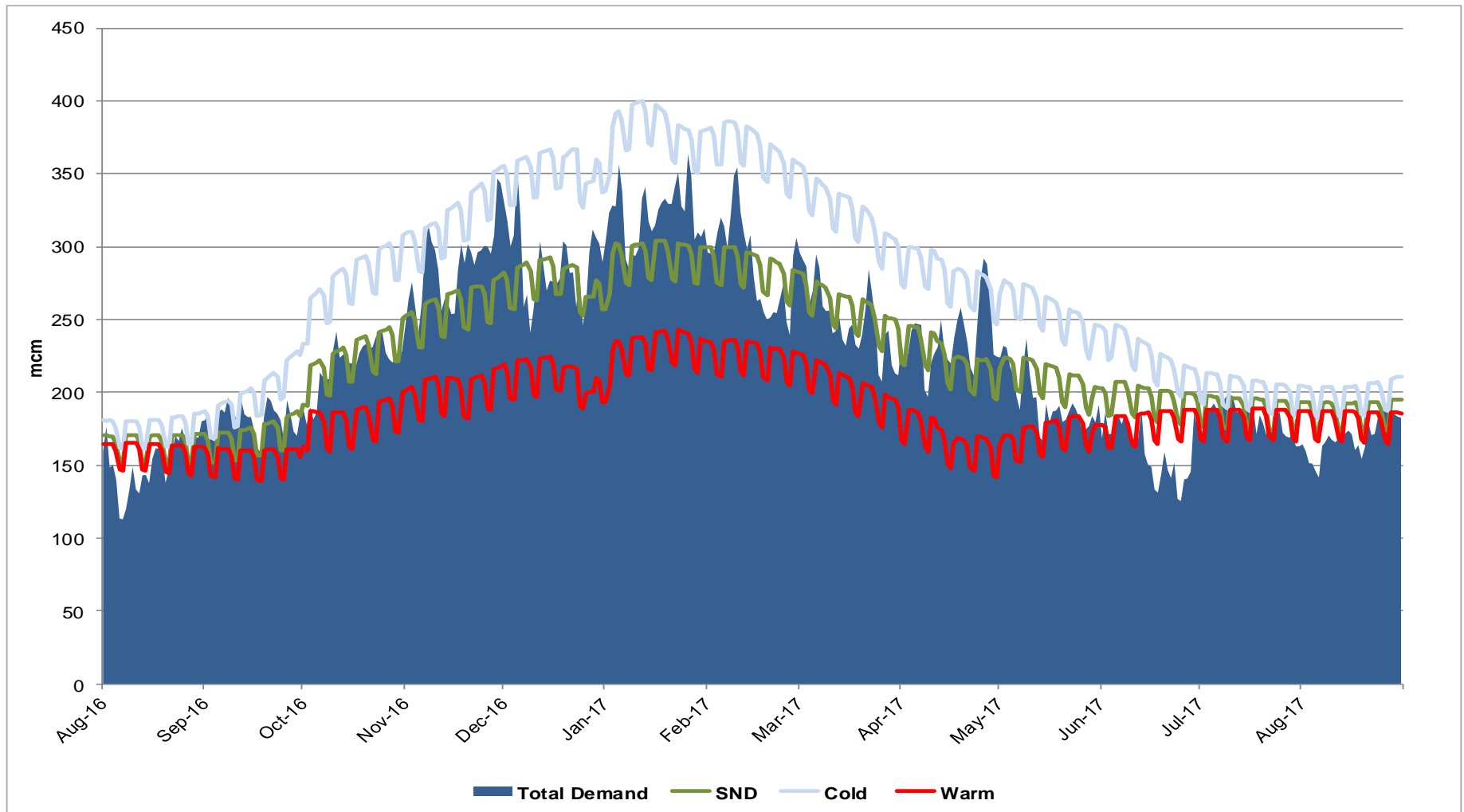
# Demand Variance from SND

1<sup>st</sup> August 2016 to 31<sup>st</sup> August 2017



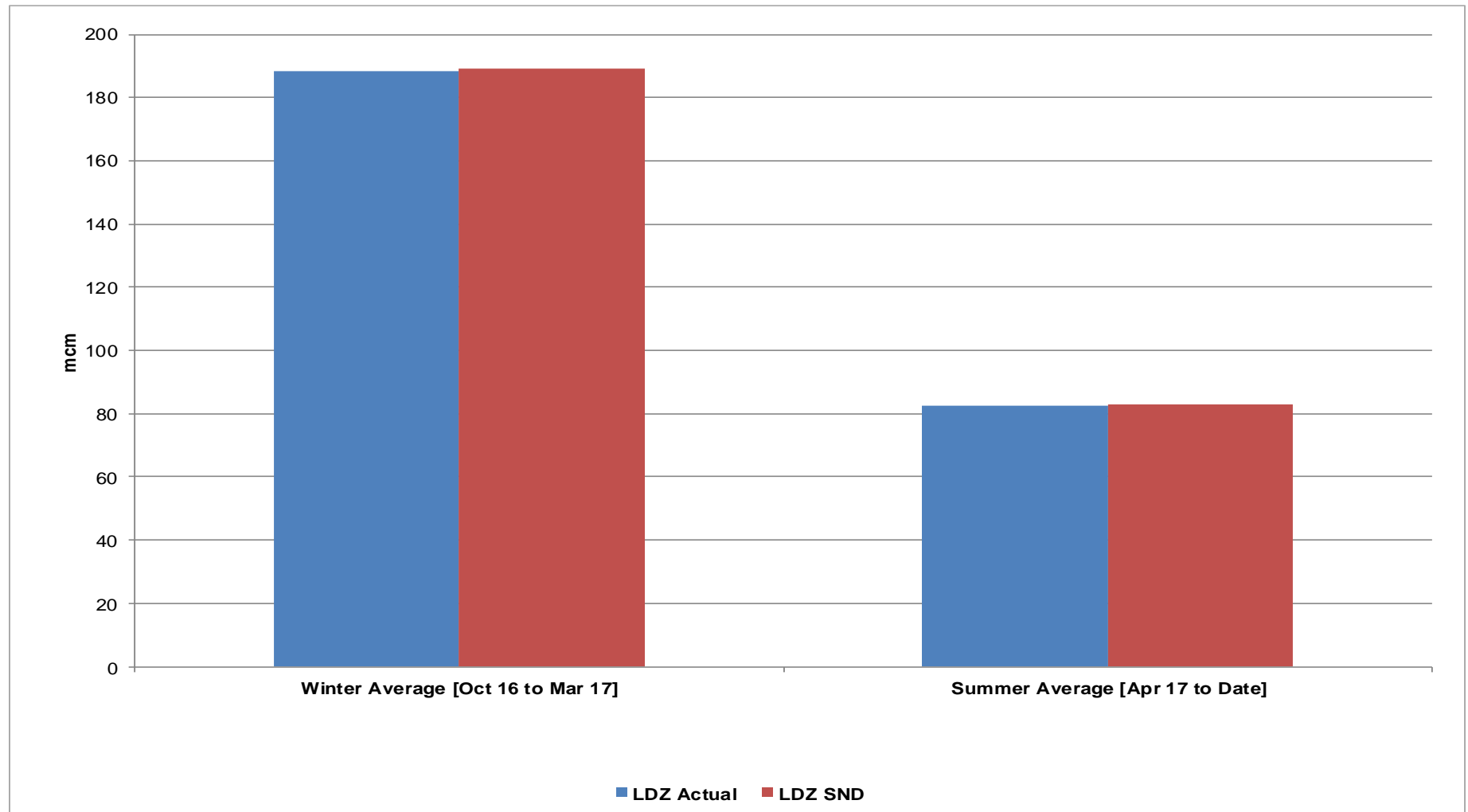
# Gas Demand Vs SND / Cold / Warm

1<sup>st</sup> August 2016 to 31<sup>st</sup> August 2017



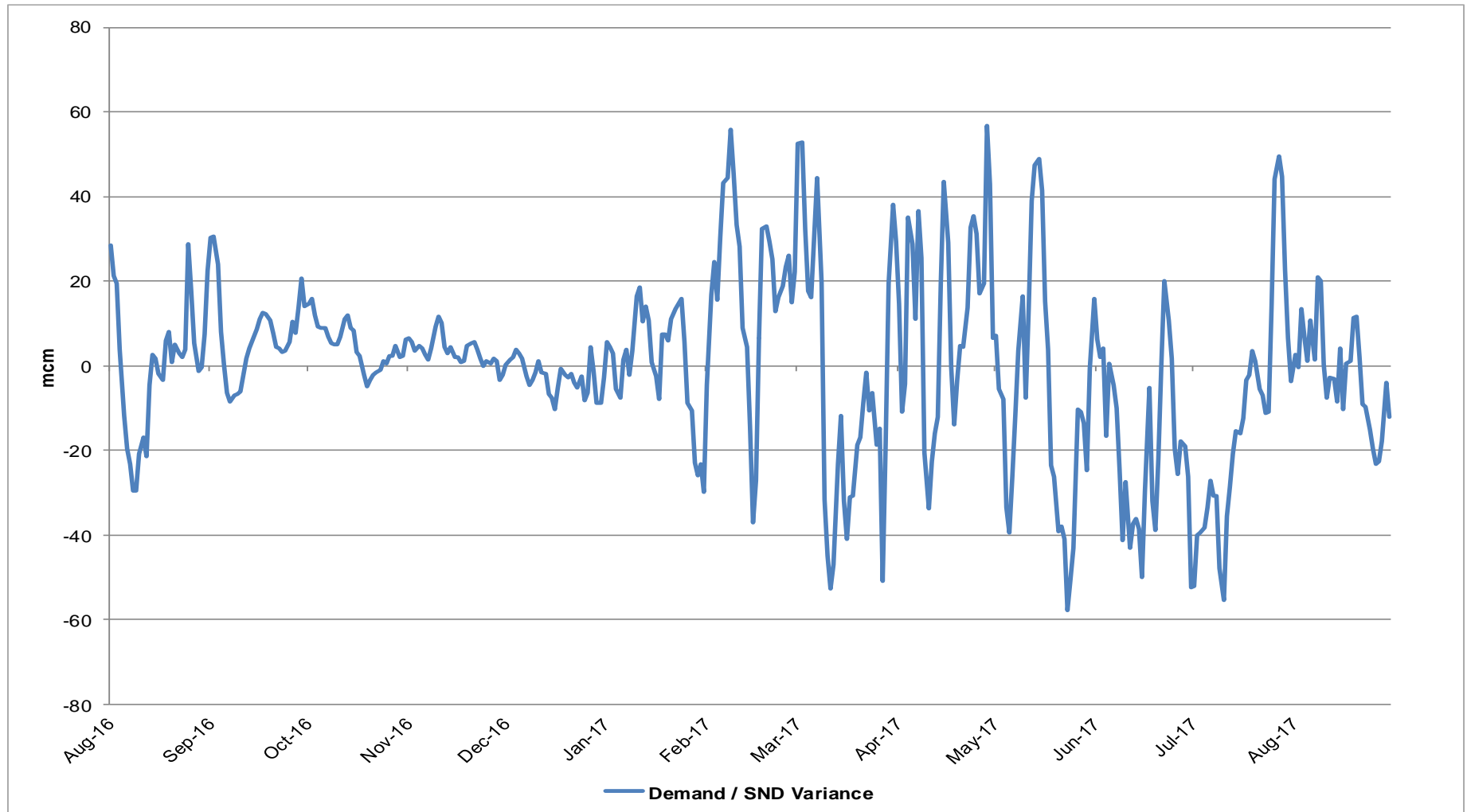
# LDZ Actual Demand Vs LDZ SND

1<sup>st</sup> October 2016 to 31<sup>st</sup> August 2017



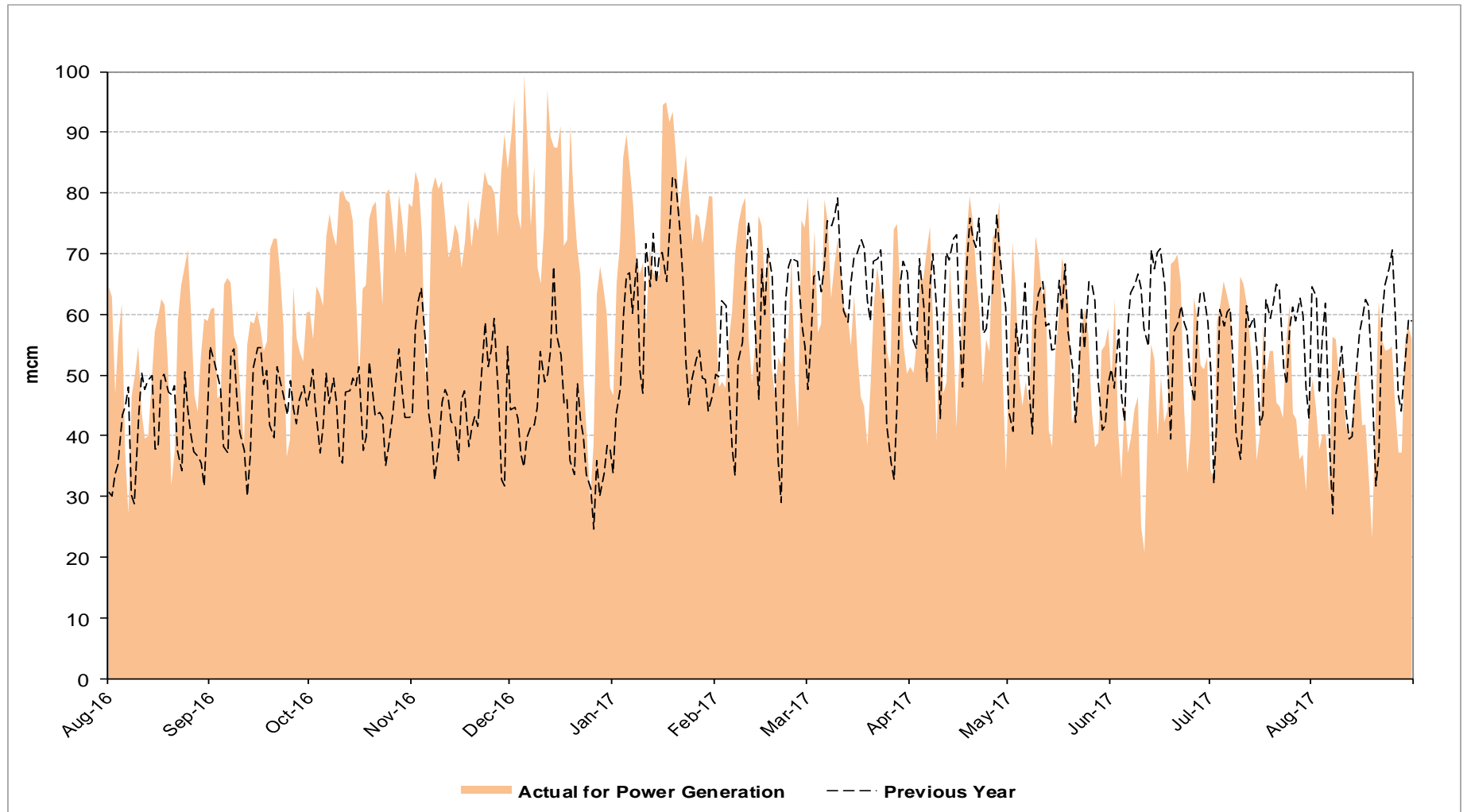
# LDZ Demand / LDZ SND Variance

1<sup>st</sup> August 2016 to 31<sup>st</sup> August 2017



# Gas Consumption for Power Generation

1<sup>st</sup> August 2016 to 31<sup>st</sup> August 2017

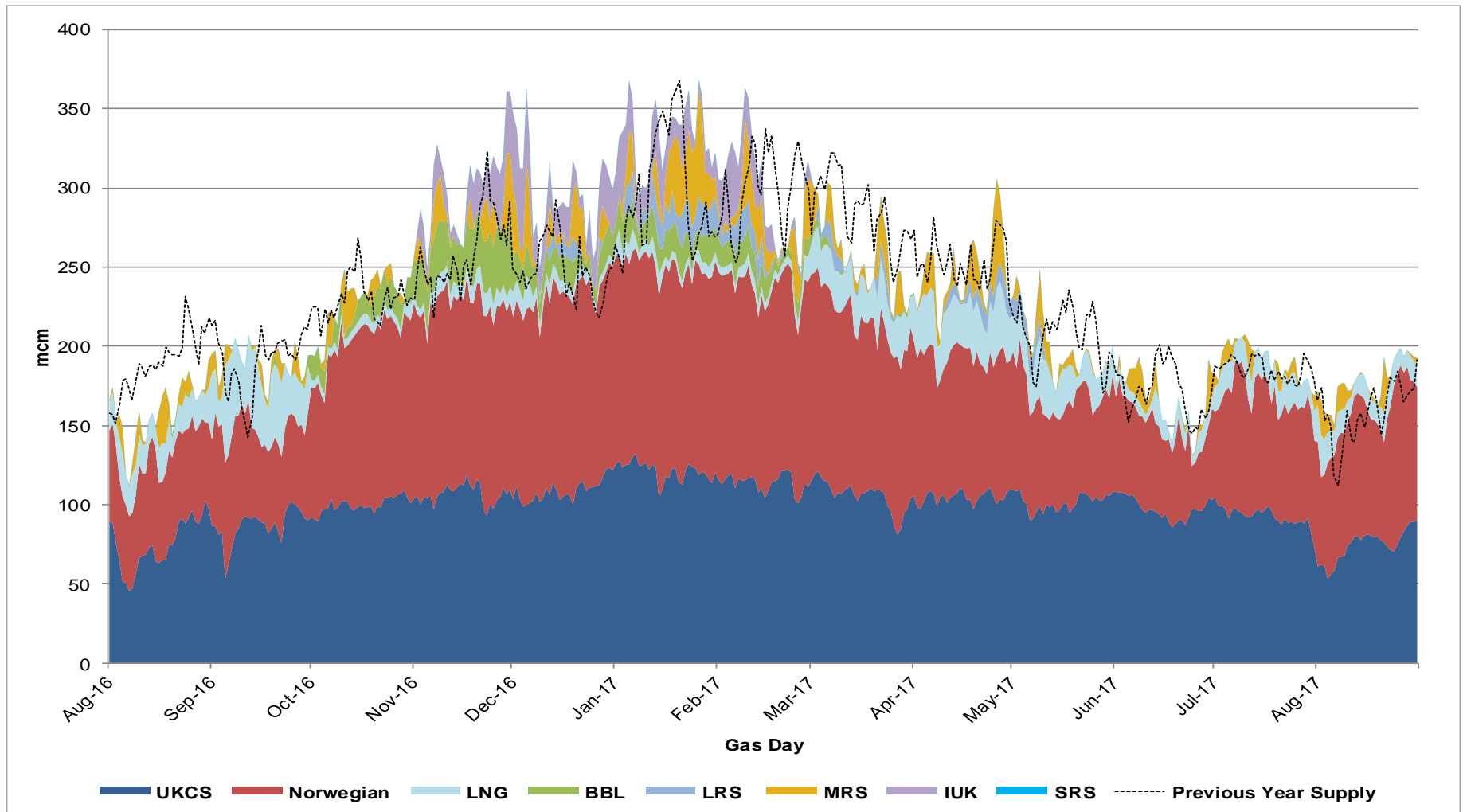


# Supplies



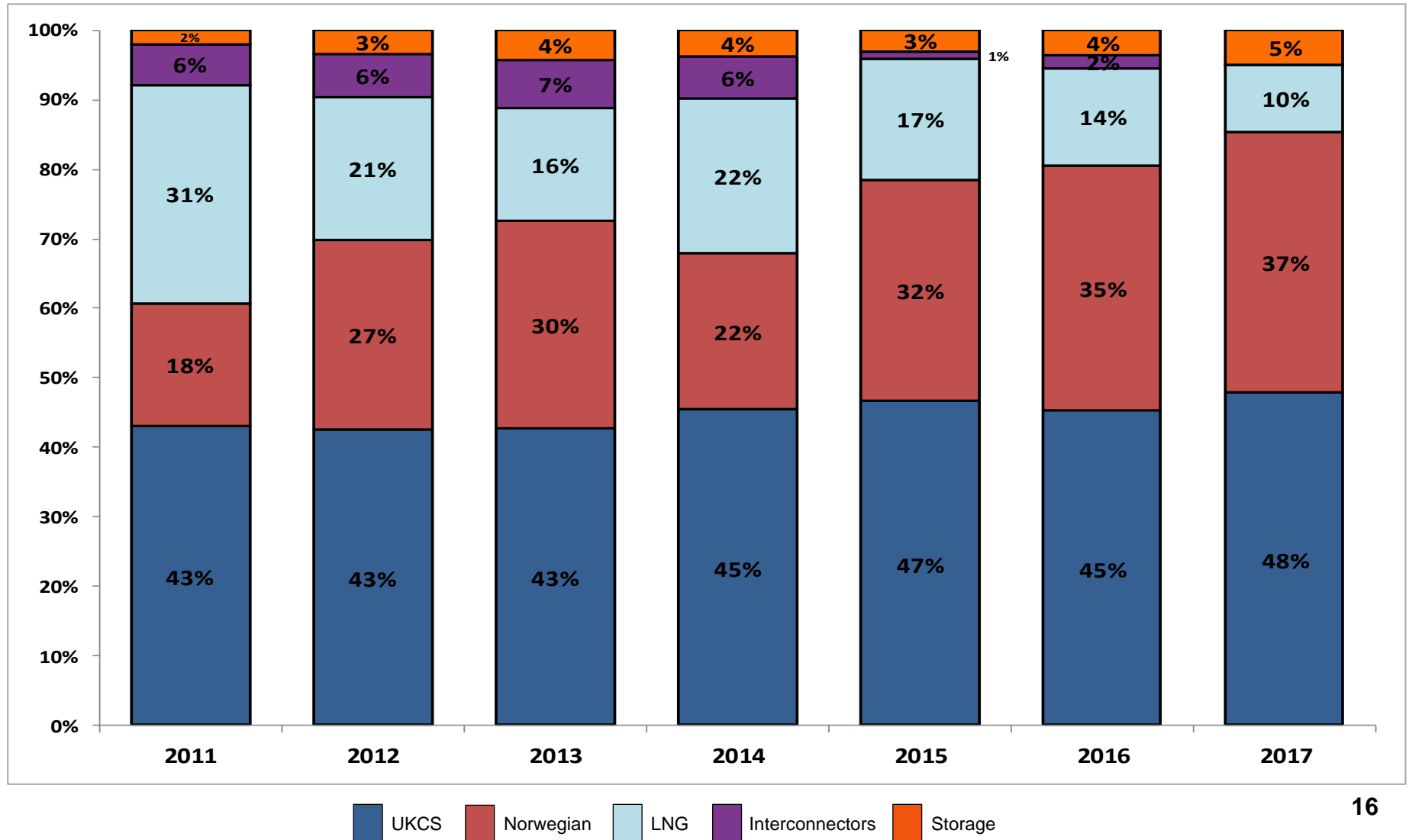
# Gas Supply Breakdown

1<sup>st</sup> August 2016 to 31<sup>st</sup> August 2017 vs Previous Year



# Gas Supply Breakdown

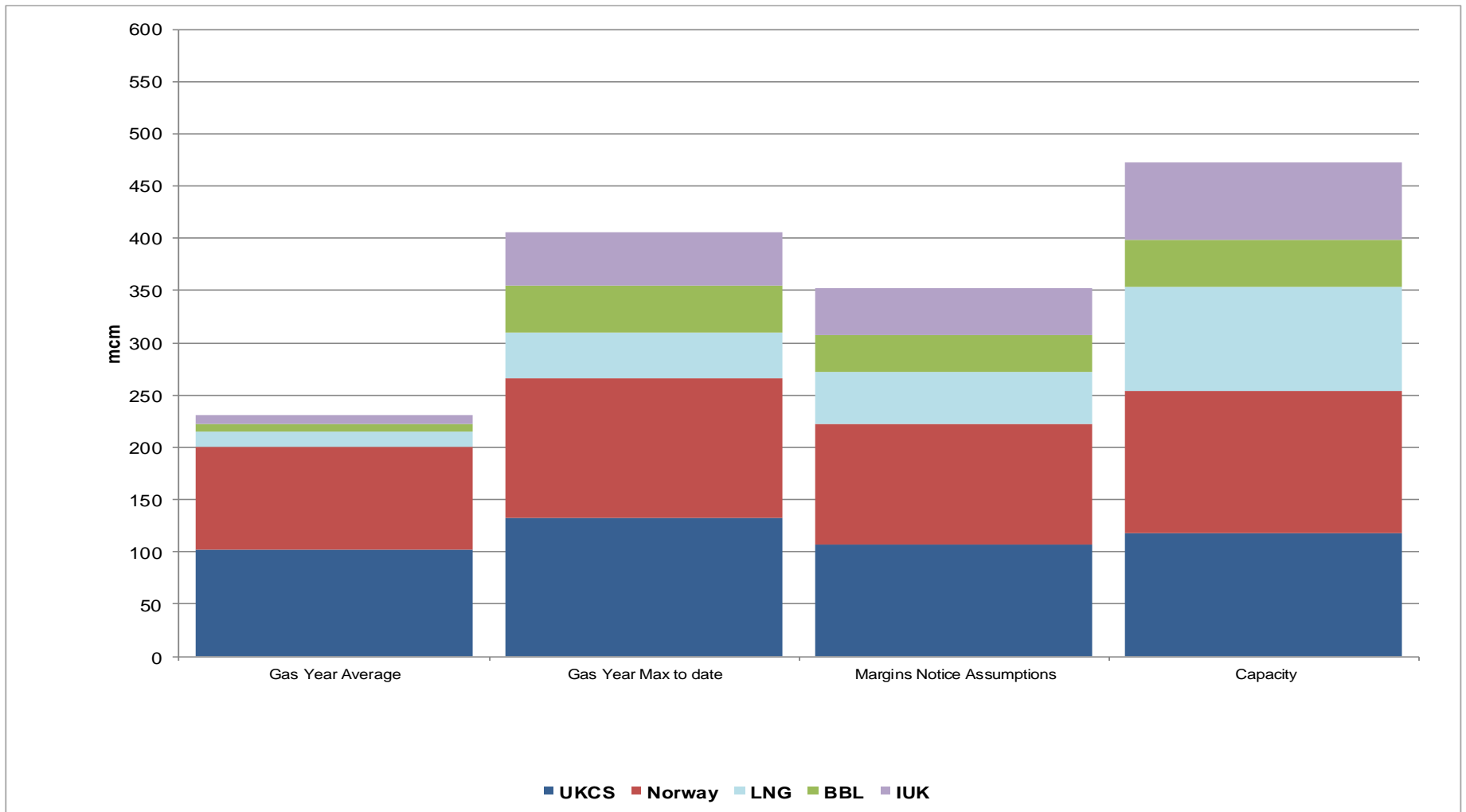
1<sup>st</sup> April 2017 to 31<sup>st</sup> August 2017 vs Same Period in Previous Years





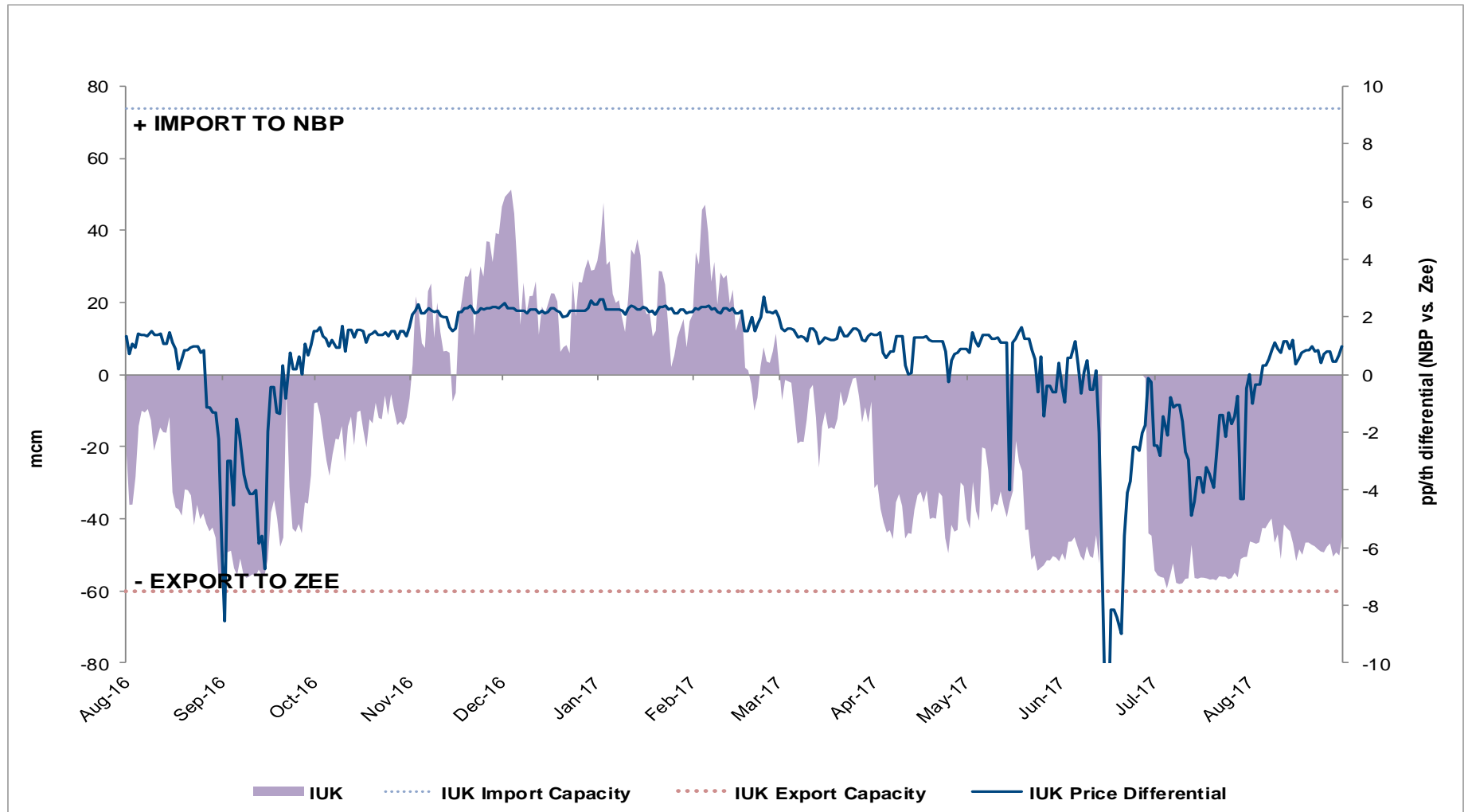
# NSS (Non Storage Supply)

1<sup>st</sup> October 2016 to 31<sup>st</sup> August 2017



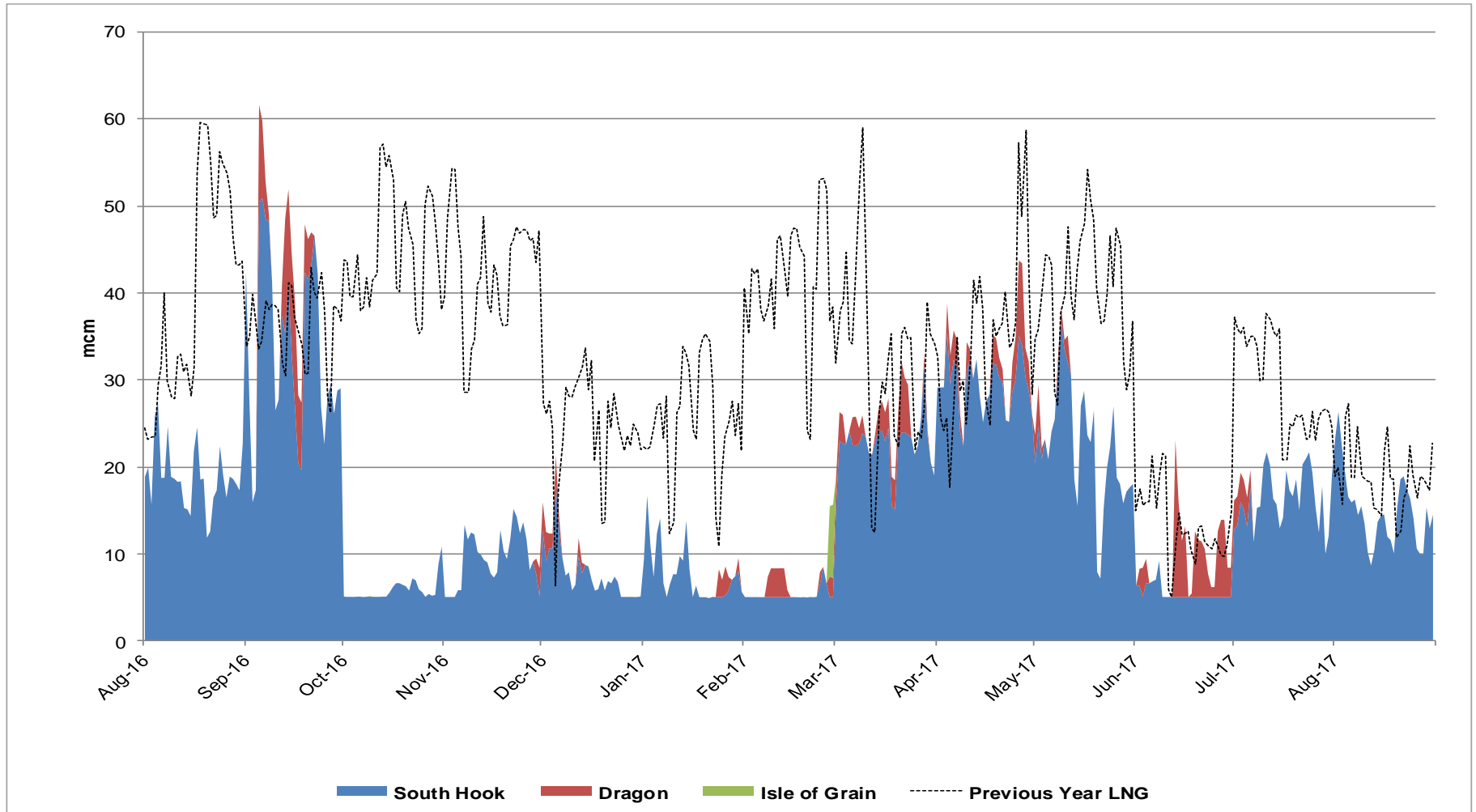
# IUK Flows vs NBP & ZEE Price Differential

1<sup>st</sup> August 2016 to 31<sup>st</sup> August 2017



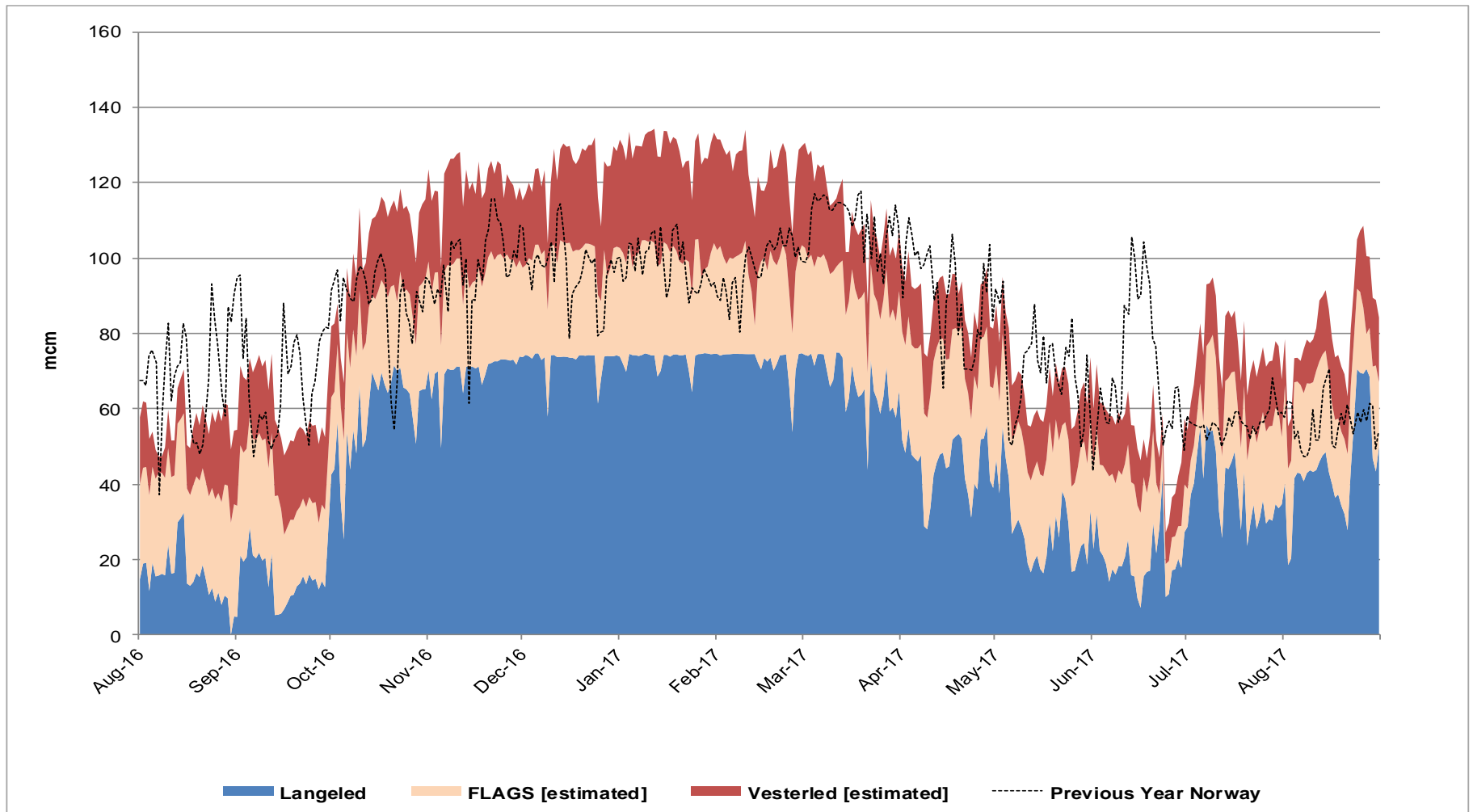
# LNG Terminal Flows

1<sup>st</sup> August 2016 to 31<sup>st</sup> August 2017



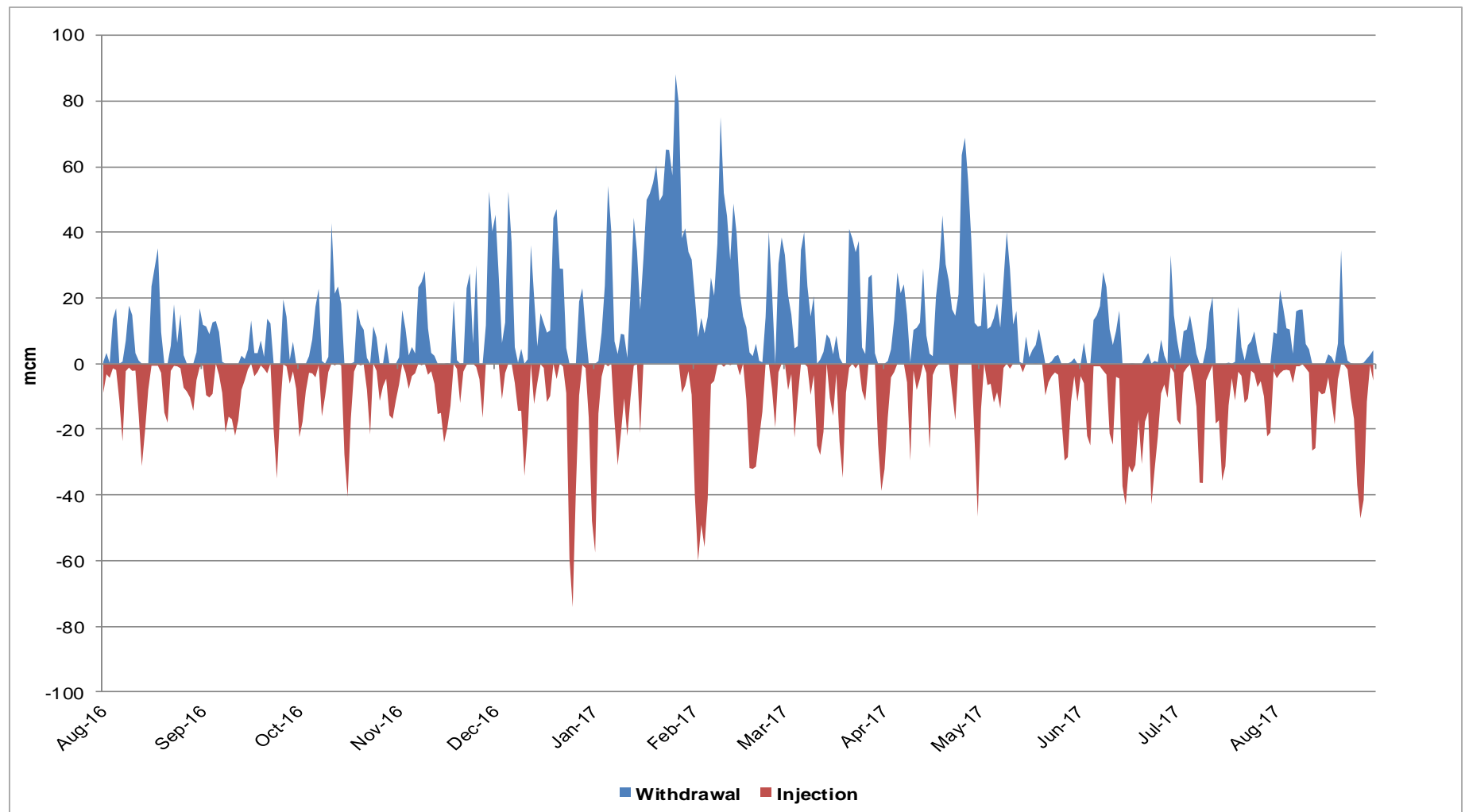
# Norwegian Flows

1<sup>st</sup> August 2016 to 31<sup>st</sup> August 2017



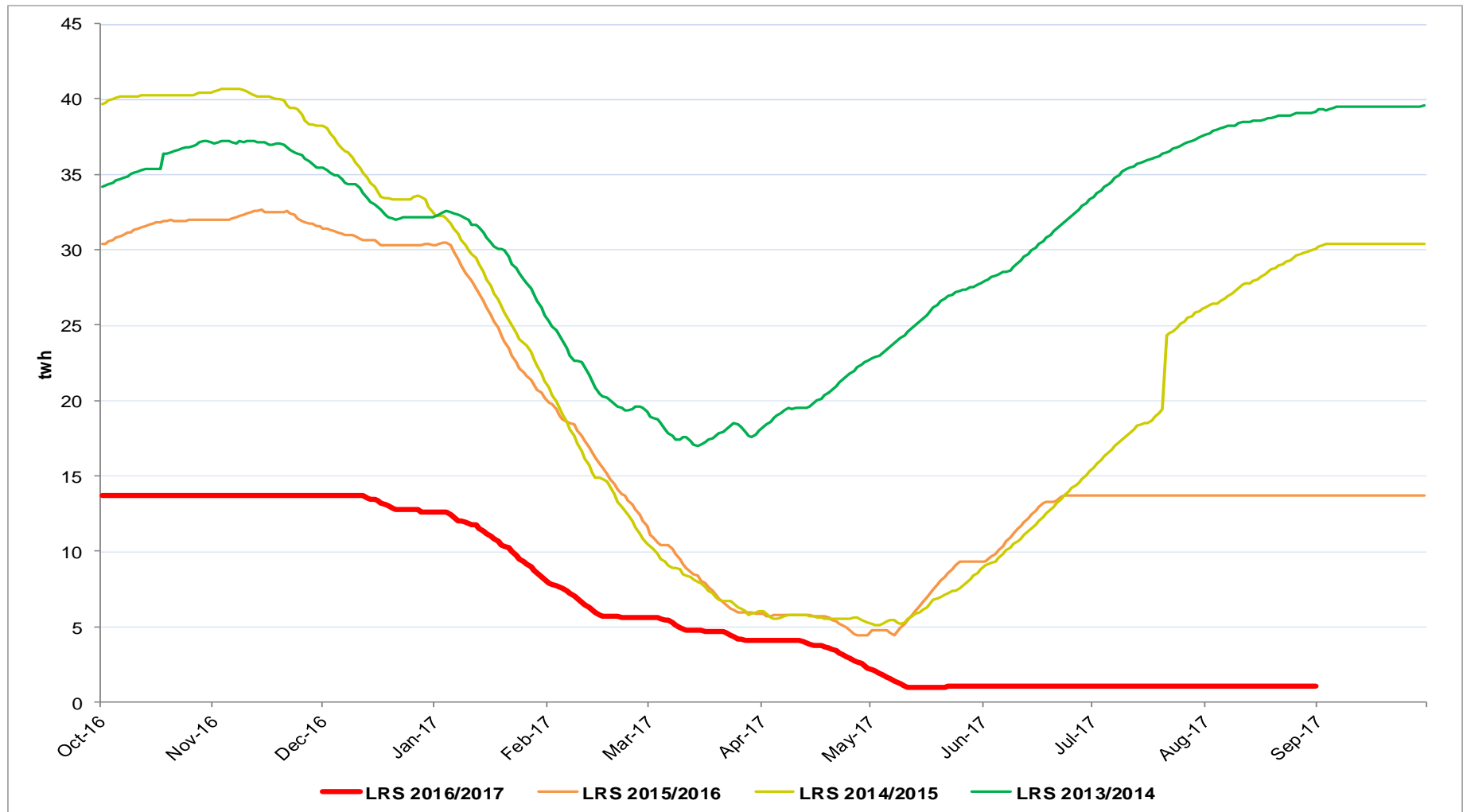
# Storage Withdrawal vs Injection

1st August 2016 to 31st August 2017



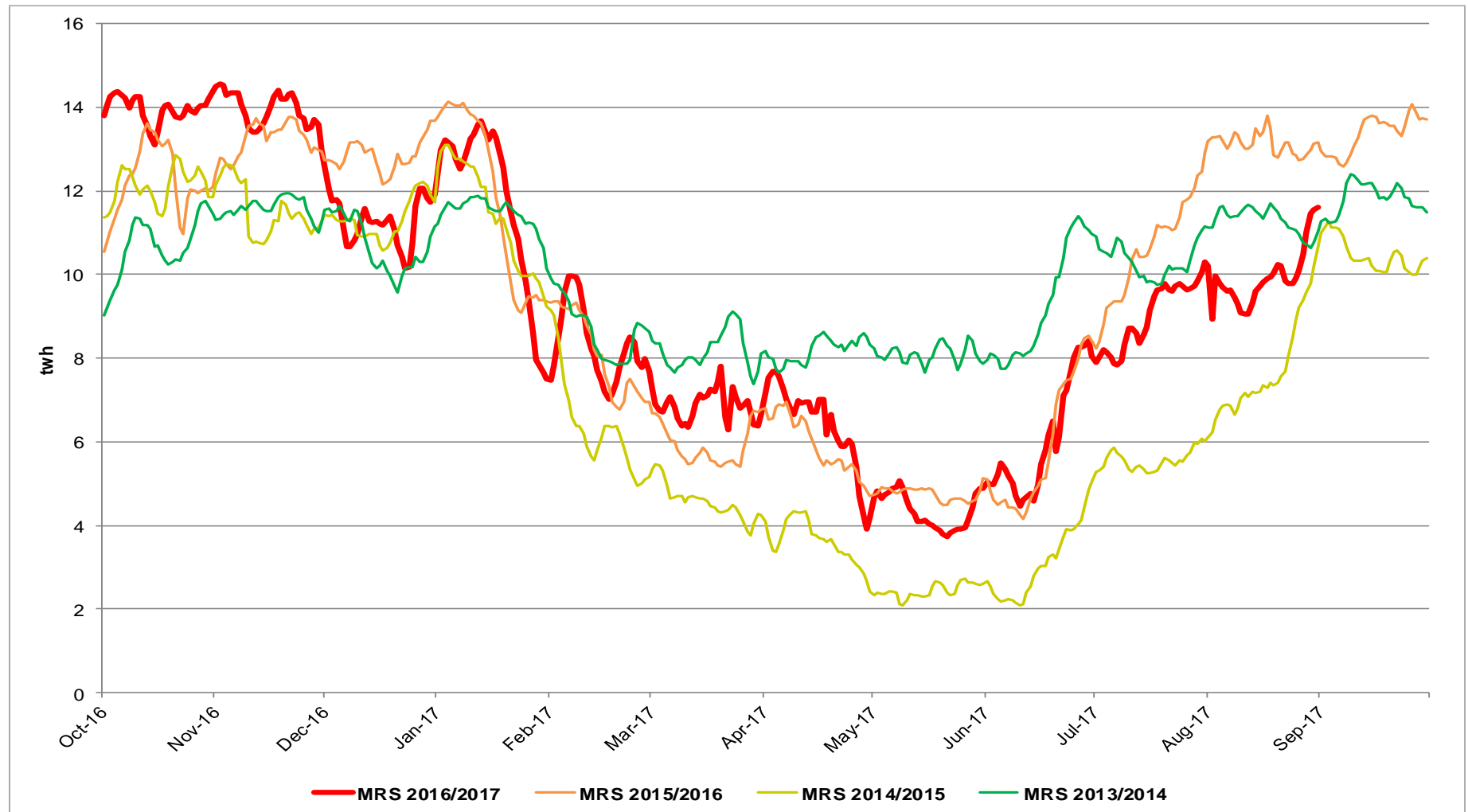
# Long Range Storage Stocks (LRS)

1<sup>st</sup> October 2016 to 31<sup>st</sup> August 2017 vs Previous Years



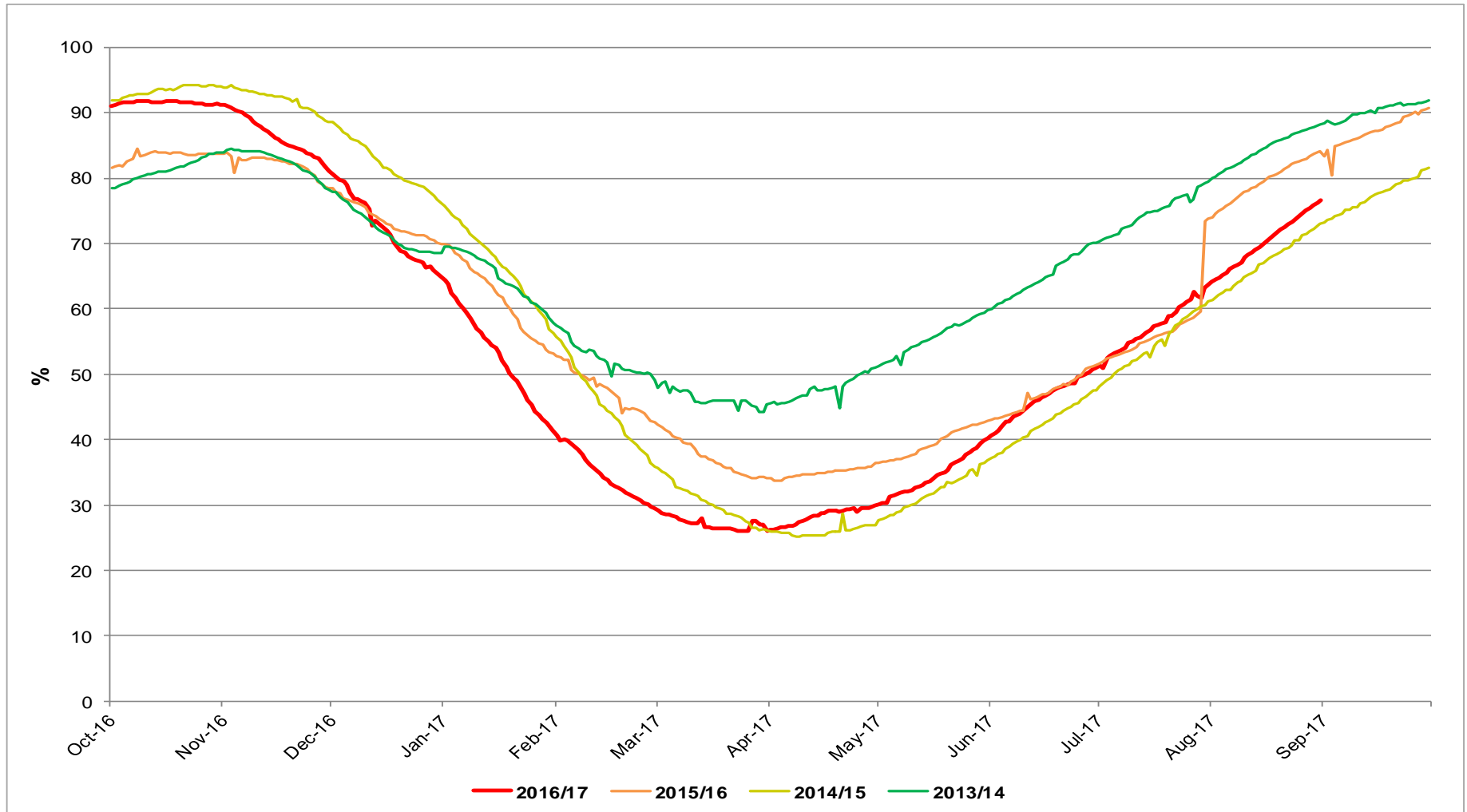
# Medium Range Storage Stocks (MRS)

1<sup>st</sup> October 2016 to 31<sup>st</sup> August 2017 vs Previous Years



# Combined EU Storage Stocks (% Full)

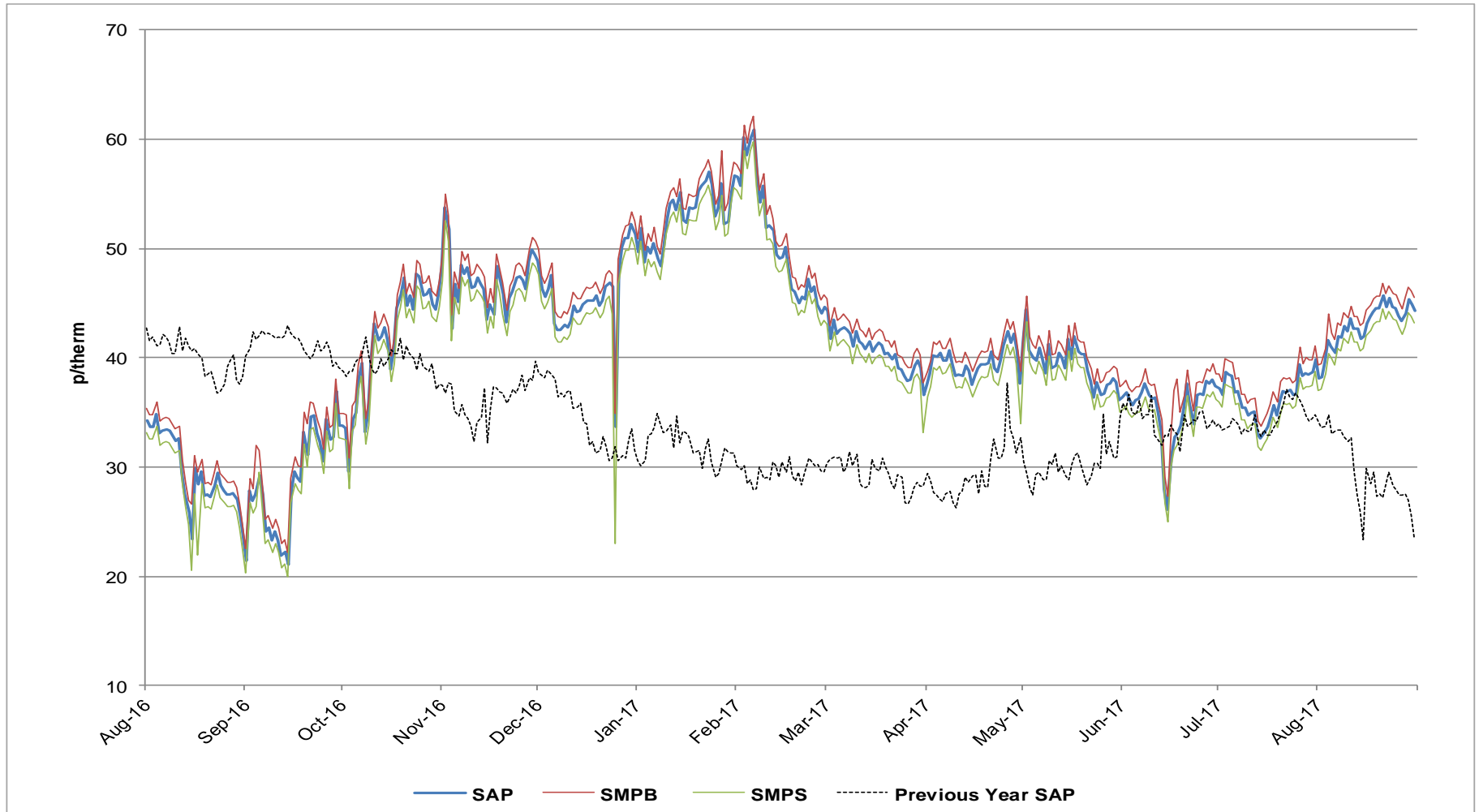
1<sup>st</sup> October 2016 to 31<sup>st</sup> August 2017 vs Previous Years





# UK Gas Prices

1<sup>st</sup> August 2016 to 31<sup>st</sup> August 2017 vs Previous Year



## What Operational Issues Affected Users?

---



## Transporter Actions and Neutrality

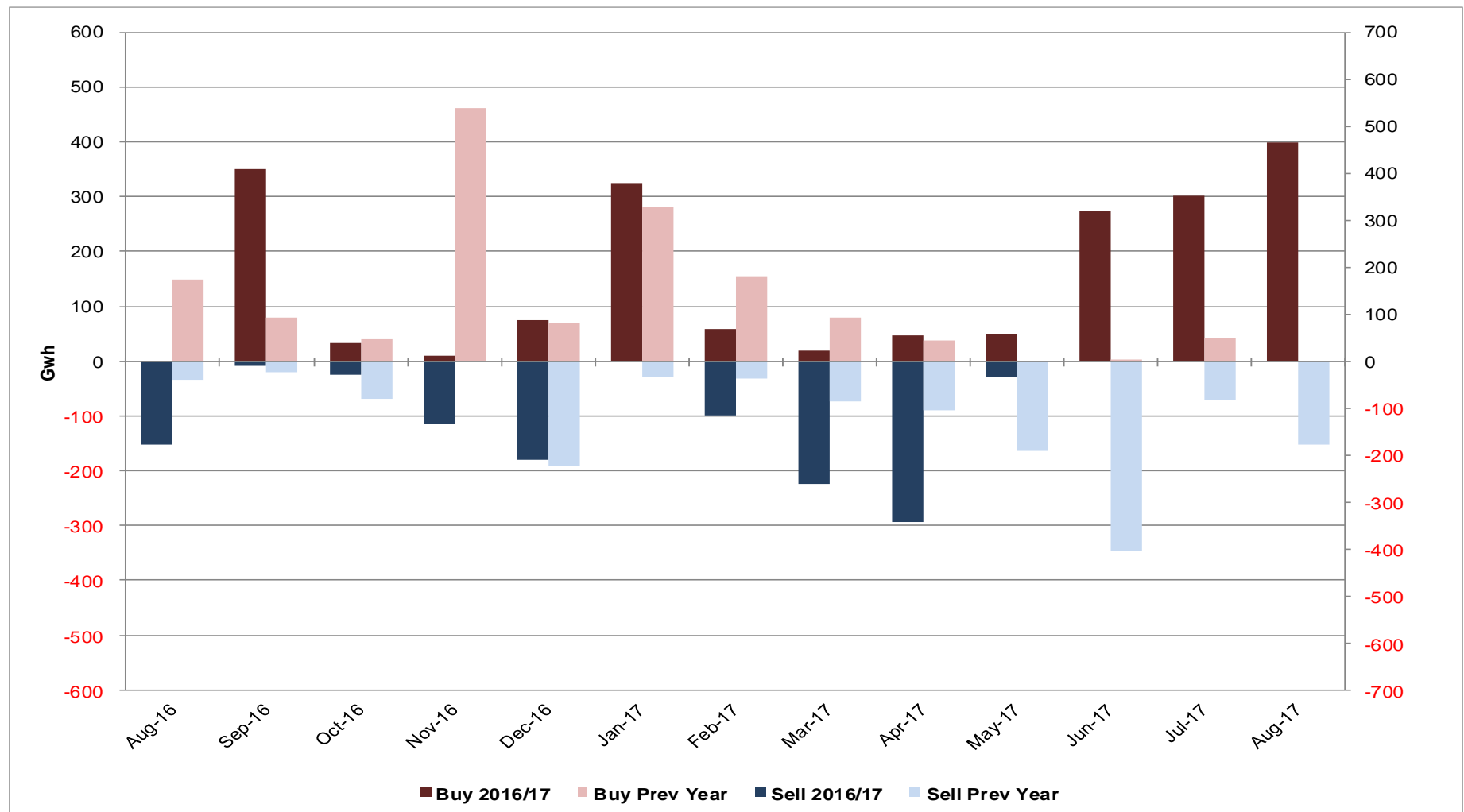


- Energy Balancing
- Capacity

# Transporter Energy Traded on the OCM

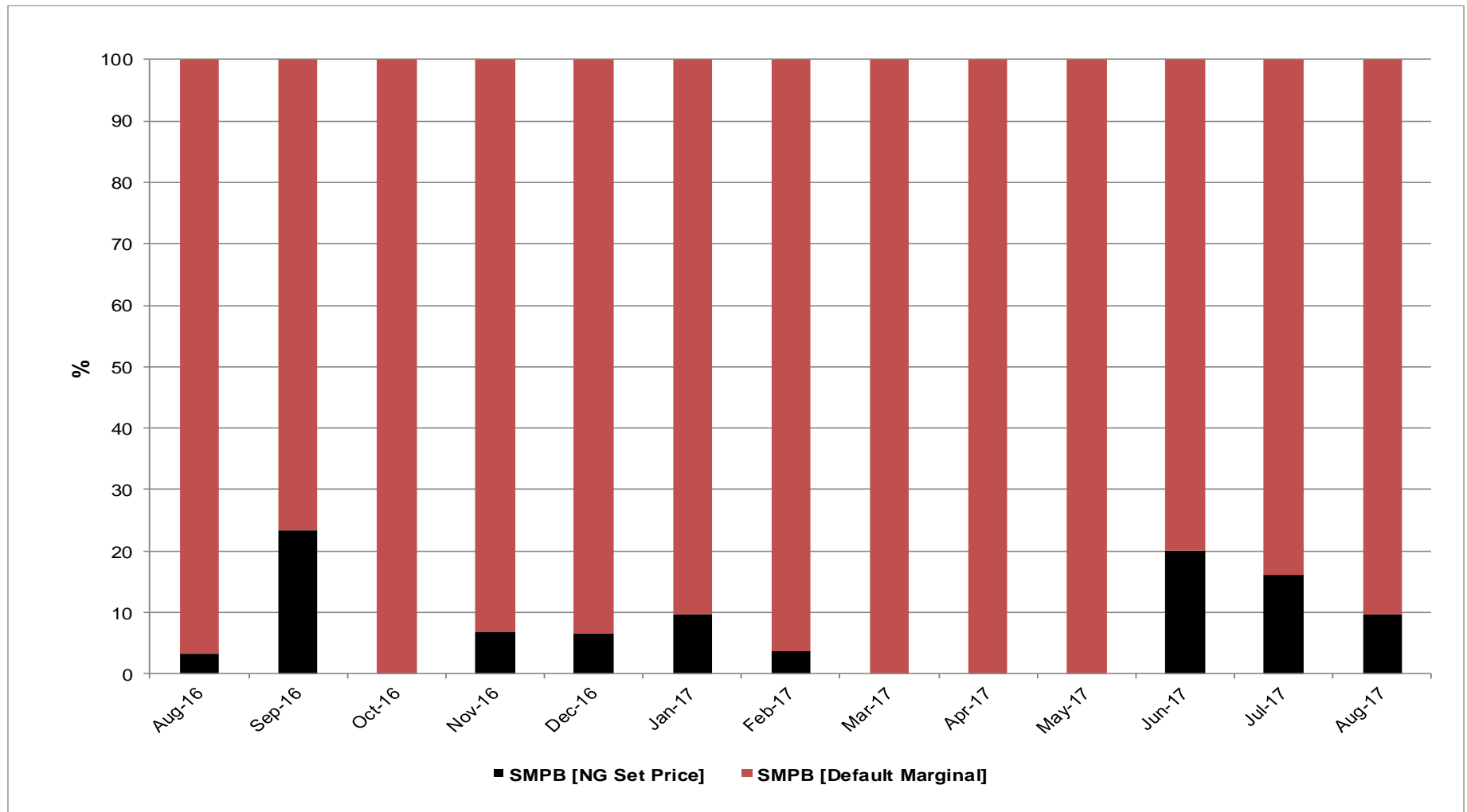
## NGG Monthly Buys and Sells

1<sup>st</sup> August 2016 to 31<sup>st</sup> August 2017 vs Previous Year



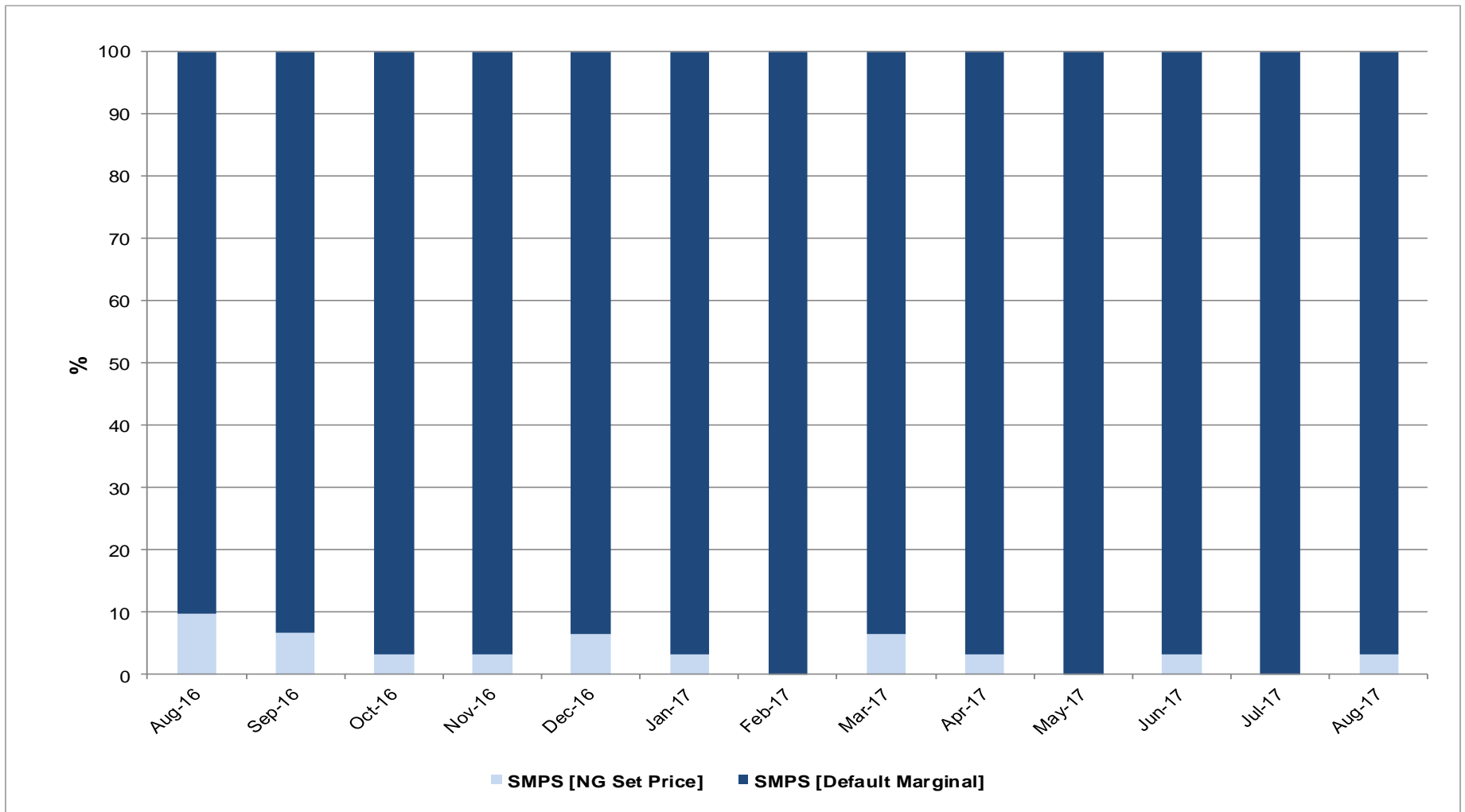
# Days of Default SMP Prices (SMPB)

August 2016 to August 2017



# Days of Default SMP Prices (SMPS)

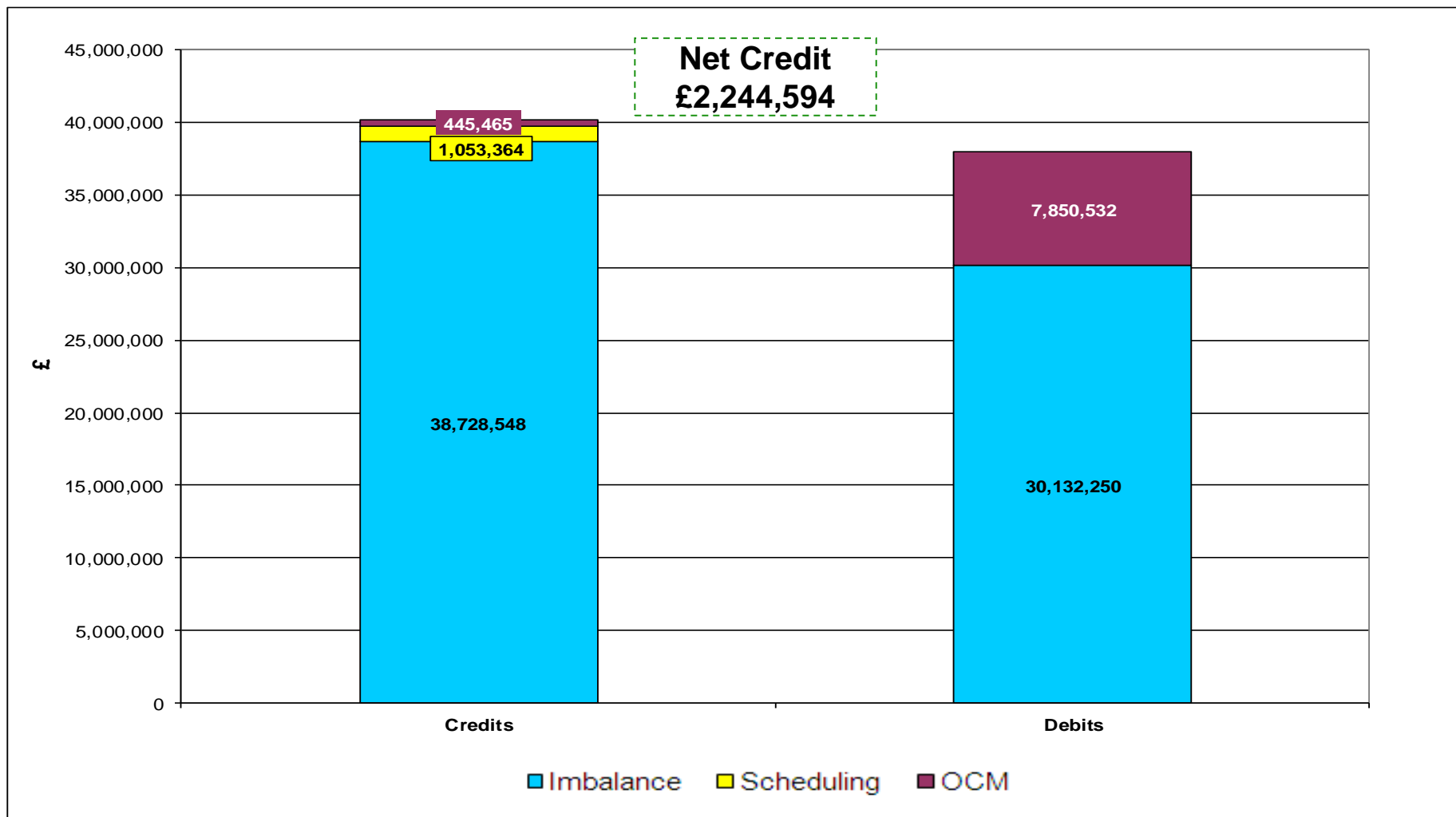
August 2016 to August 2017



# Energy Balancing - Balancing Costs

Payments / Charges / Net Credit / Debit (Imbalance / Scheduling / OCM)

May, June, and July 2017



# Energy Balancing - Balancing Costs

Payments / Charges / Net Credit / Debit (Imbalance / Scheduling / OCM)

May, June, and July 2017

---

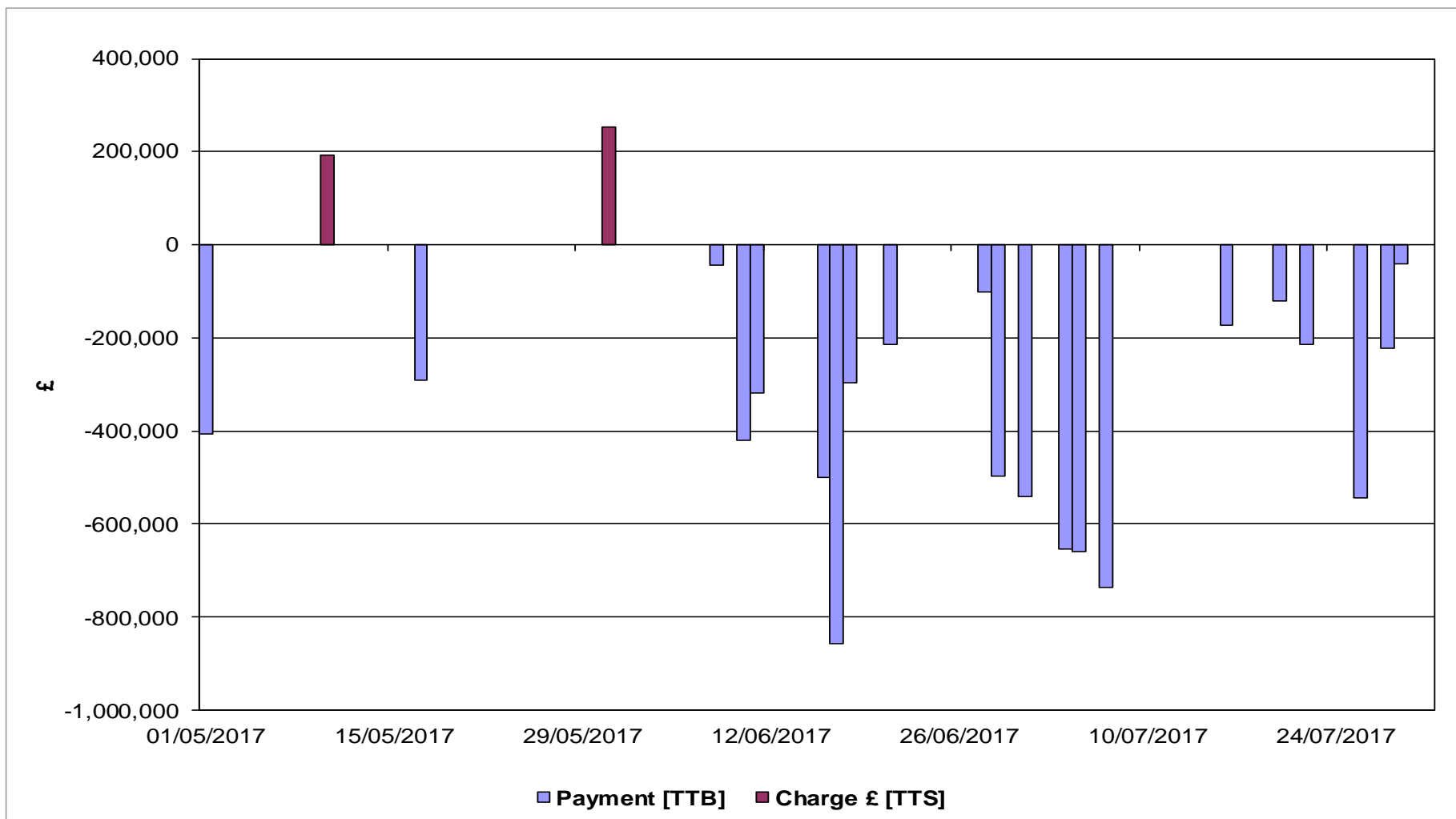
		<b>May-17</b>	<b>Jun-17</b>	<b>Jul-17</b>
<b>Imbalance</b>	Payment £ [DCS]	-11,206,574	-10,110,592	-8,815,085
	Charge £ [DCT]	13,450,833	14,597,070	10,680,644
<b>Scheduling</b>	Exit Charge £ [DXS]	19,163	0	62
	Exit Charge £ [EXS]	71,559	109,742	118,102
	Entry Charge £ [ESC]	265,933	168,999	299,804
<b>OCM</b>	Payment £ [TTB]	-698,665	-3,248,761	-3,903,106
	Charge £ [TTS]	445,465	0	0
<b>Balancing Costs</b>		<b>2,347,714</b>	<b>1,516,459</b>	<b>-1,619,579</b>



# Energy Balancing - Balancing Costs

OCM Payments / Charges

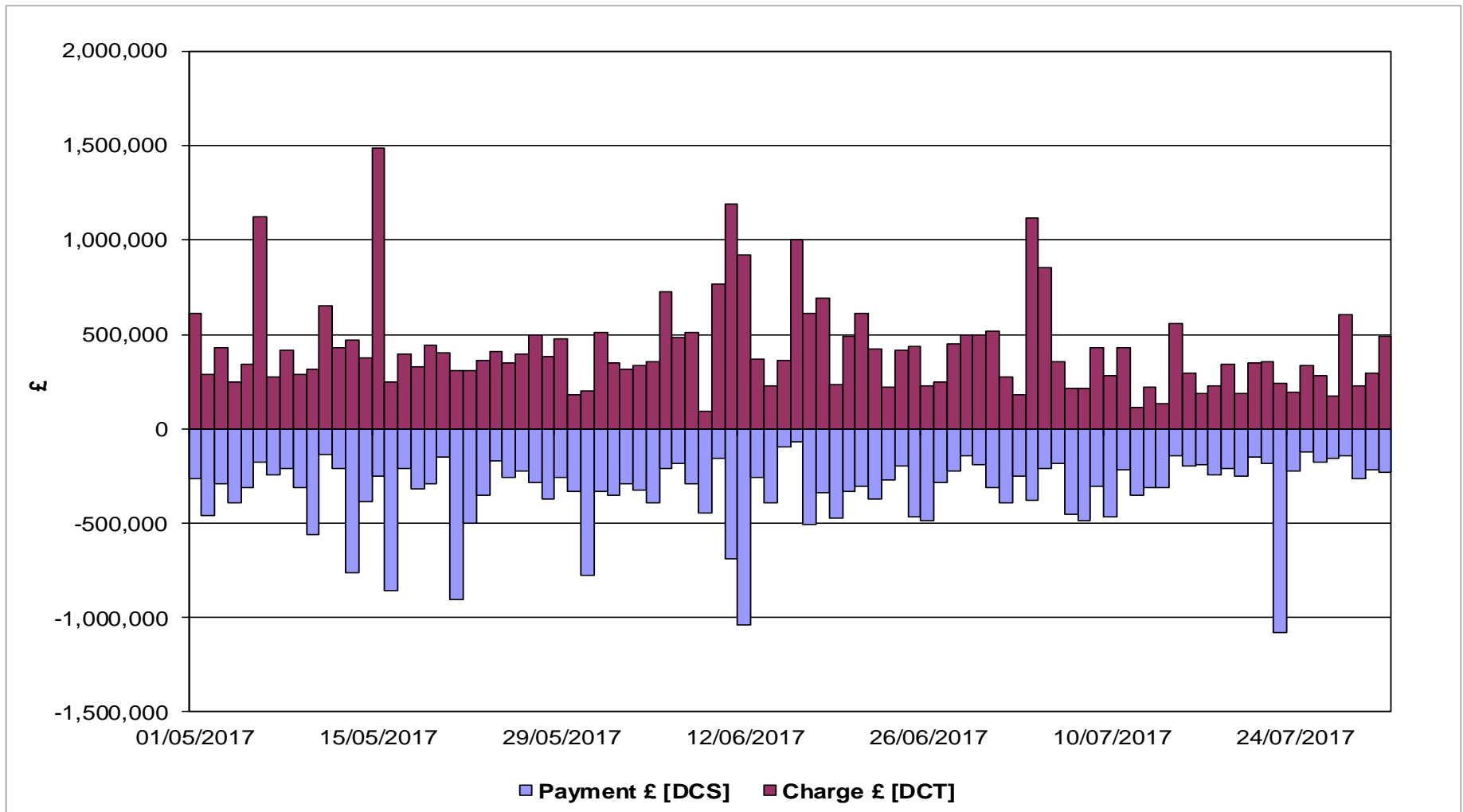
May, June, and July 2017



# Energy Balancing - Balancing Costs

Imbalance Payments / Charges

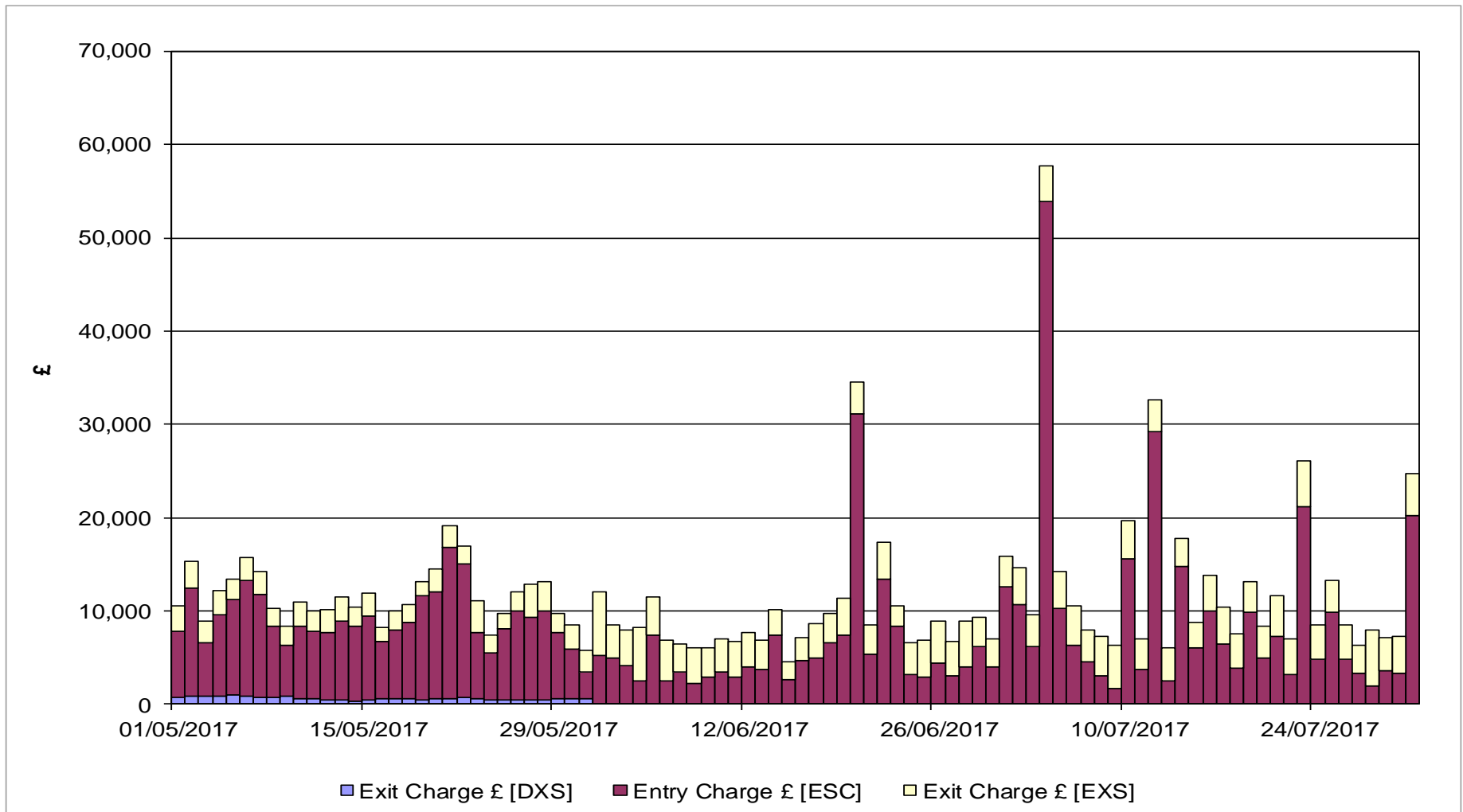
May, June, and July 2017



# Energy Balancing - Balancing Costs

## Scheduling Charges

May, June, and July 2017



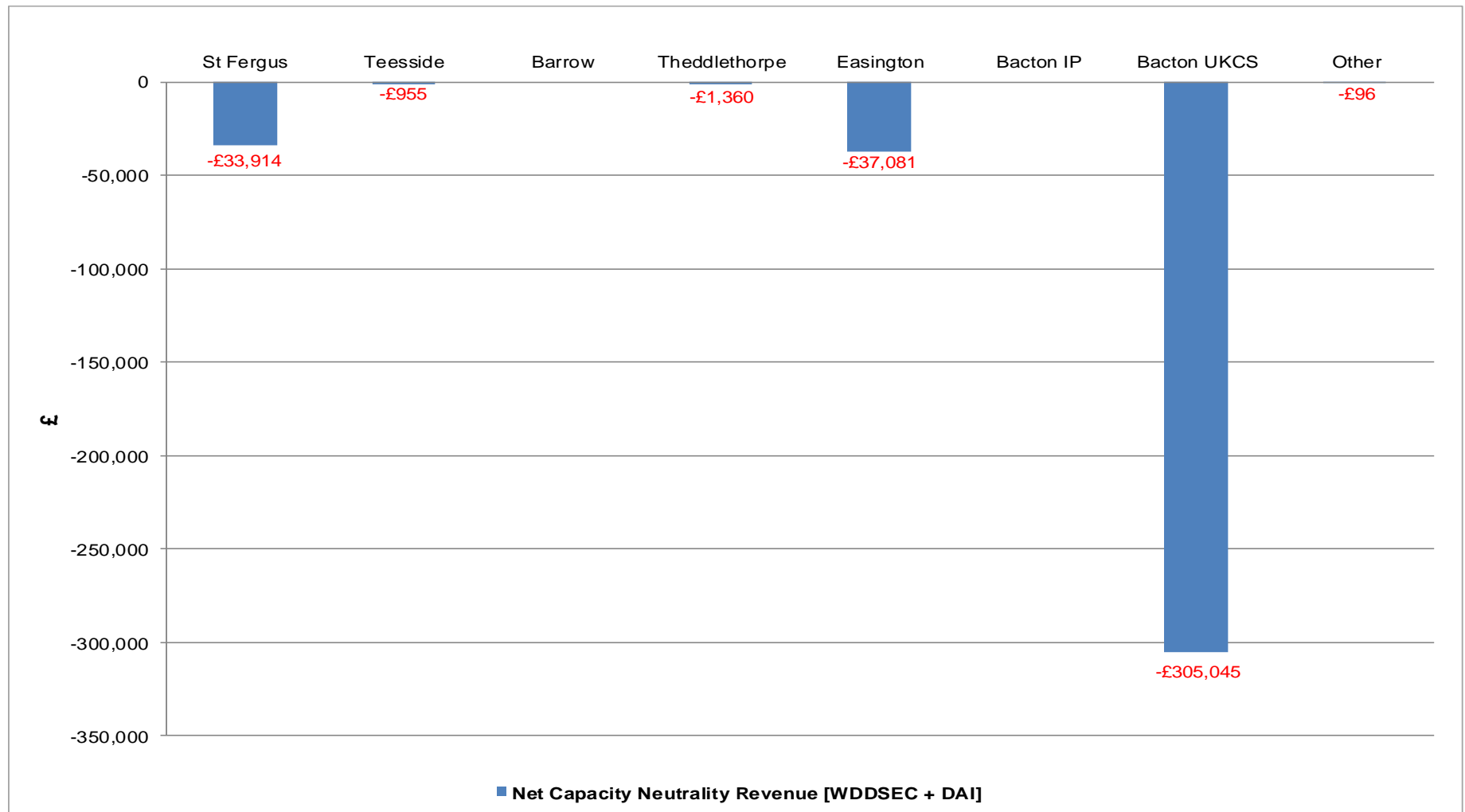
# Capacity Neutrality Net Cost / Revenue

1<sup>st</sup> April 2017 to 31<sup>st</sup> August 2017

	Revenue/Costs
WDDSEC/DAI Entry Capacity Revenue	-£377,412
Total Entry Constraint Management Operational Costs	£244,301
Entry Capacity Overrun Revenue*	-£1,438,620
Non-Obligated Sales Revenue (Entry only)	-£1,040
Revenue from Locational Sells and PRI Charges	-£0
<b>Net Revenue</b>	<b>-£1,572,771</b>

# Net Capacity Neutrality Revenue

1<sup>st</sup> April 2017 to 31<sup>st</sup> August 2017



# Capacity Neutrality

1<sup>st</sup> April 2017 to 31<sup>st</sup> August 2017

Month	Entry Cap Overrun Revenue	Non-obligated sales revenue (entry)	Month	Locational Sells and PRI charges revenue
Apr-17	-£560,278	-£108	Apr-17	£0
May-17	-£688,597	-£538	May-17	£0
Jun-17	-£147,532	-£308	Jun-17	£0
Jul-17	-£42,213	-£76	Jul-17	£0
Aug-17		-£10	Aug-17	£0
Sep-17			Sep-17	
Oct-17			Oct-17	
Nov-17			Nov-17	
Dec-17			Dec-17	
Jan-18			Jan-18	
Feb-18			Feb-18	
Mar-18			Mar-18	
<b>Total</b>	<b>-£1,438,620 (FY17-18)</b>	<b>-£1,040 (FY17-18)</b>	<b>Total</b>	<b>£0 (FY17/18)</b>