



Tyseley Energy Park





Location







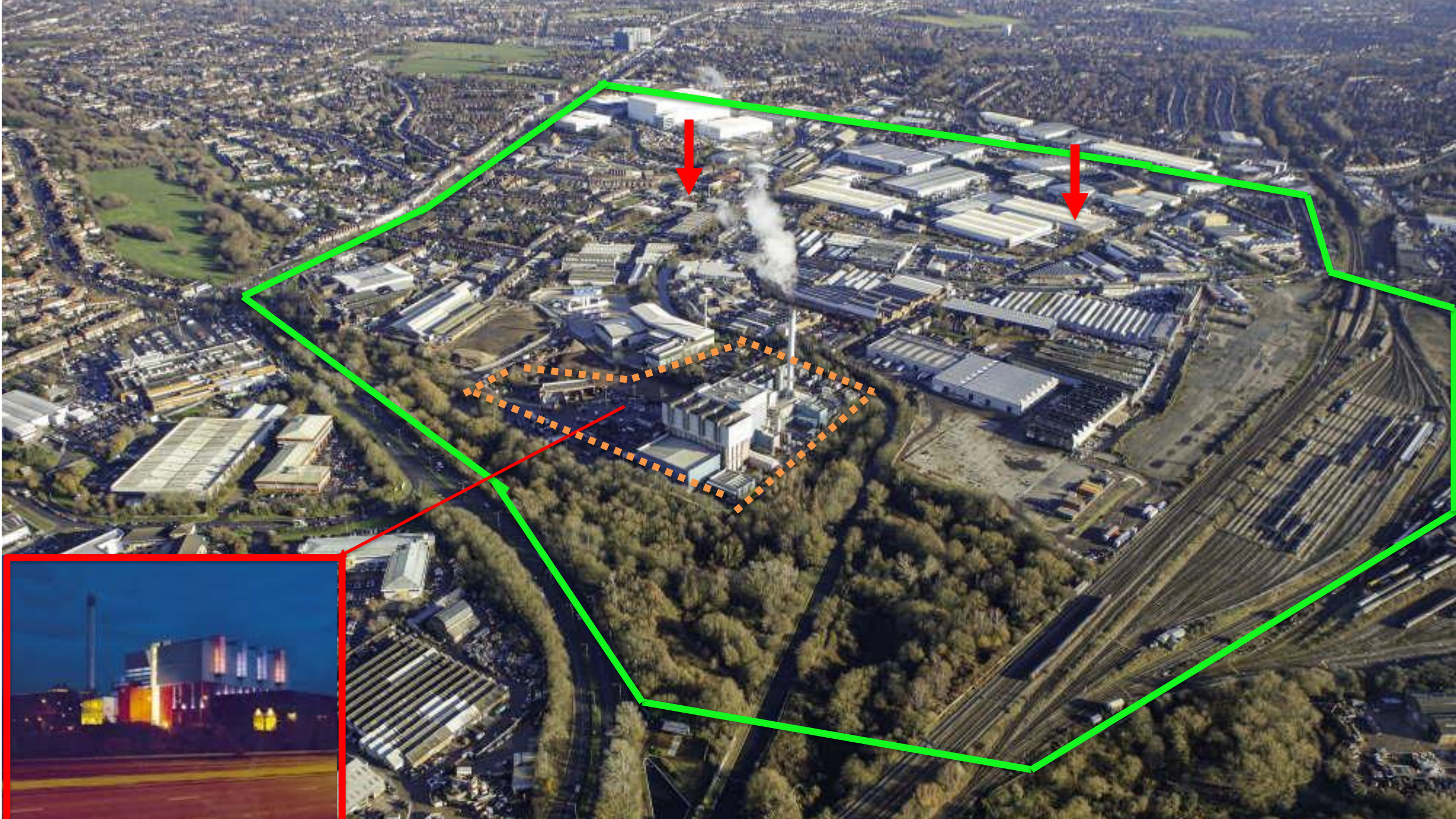
BIRMINGHAM
**BIG
CITY
PLAN**

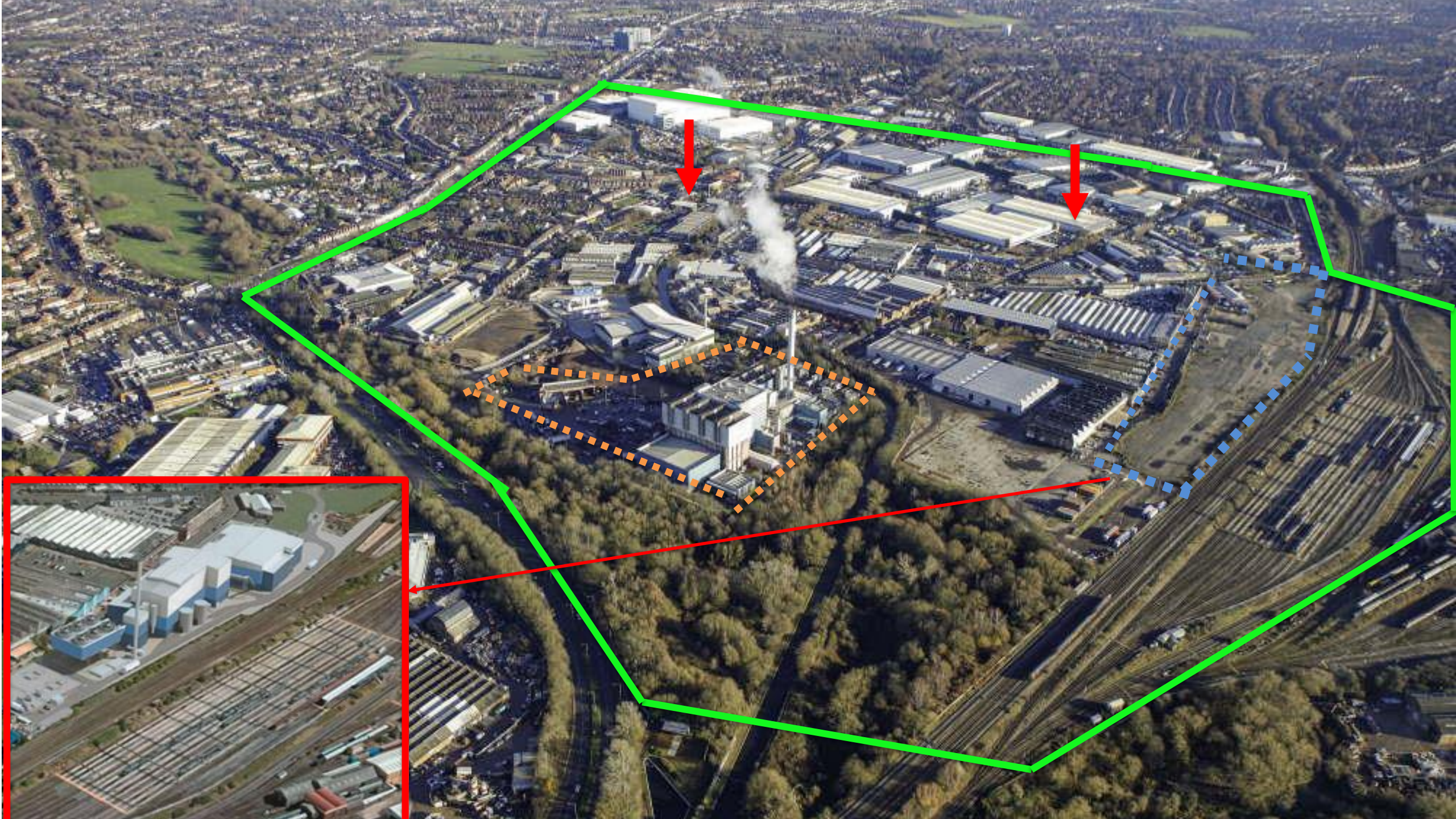


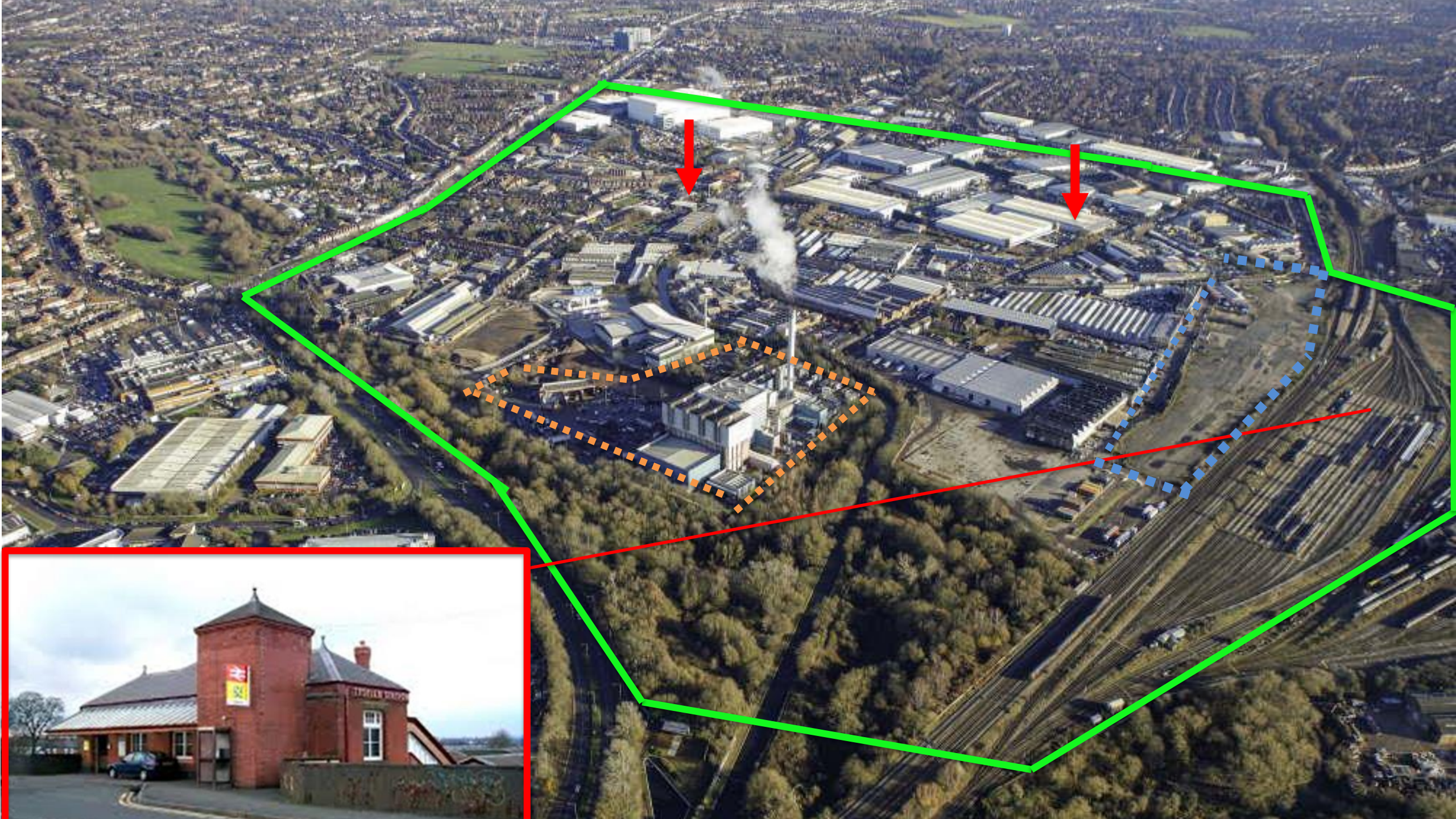
Tyseley Environmental Enterprise District

A framework for action

May 2011





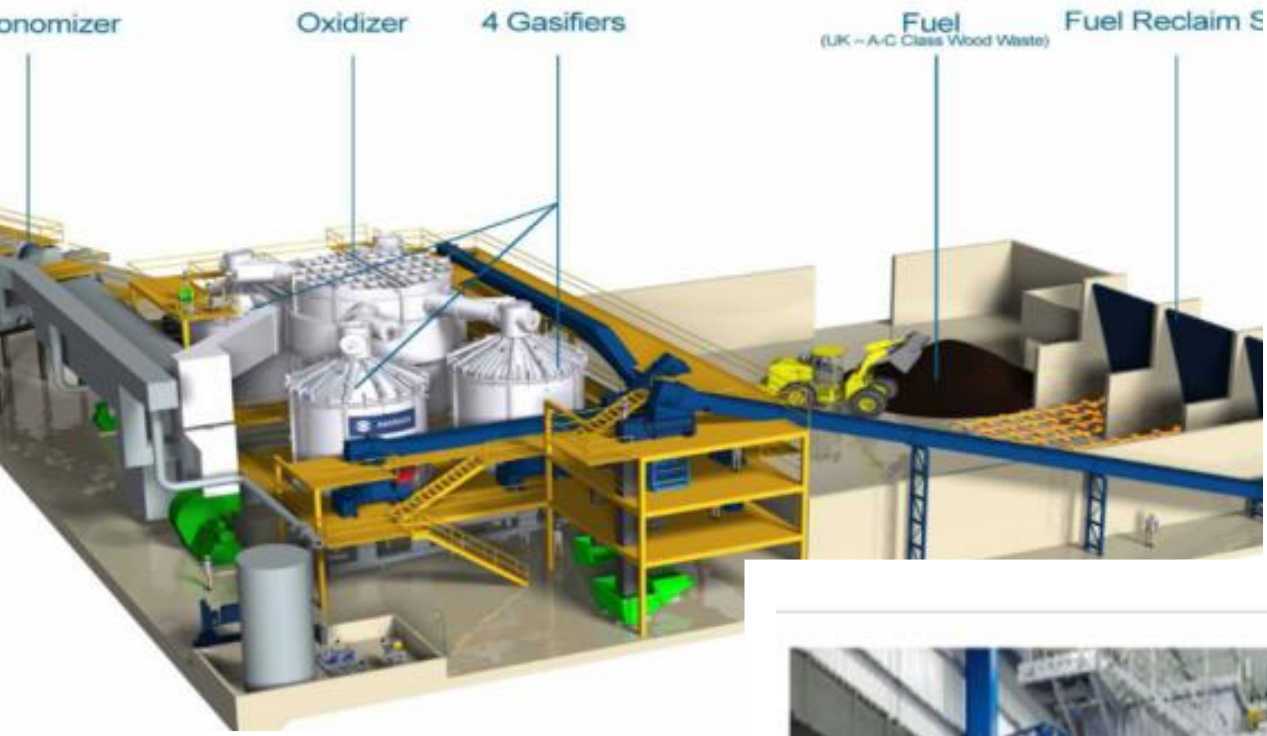






PHASE 1



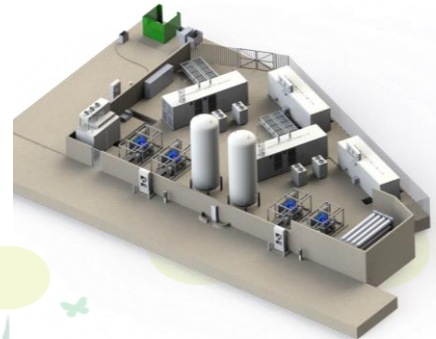




HYDROGEN
FUEL STATION



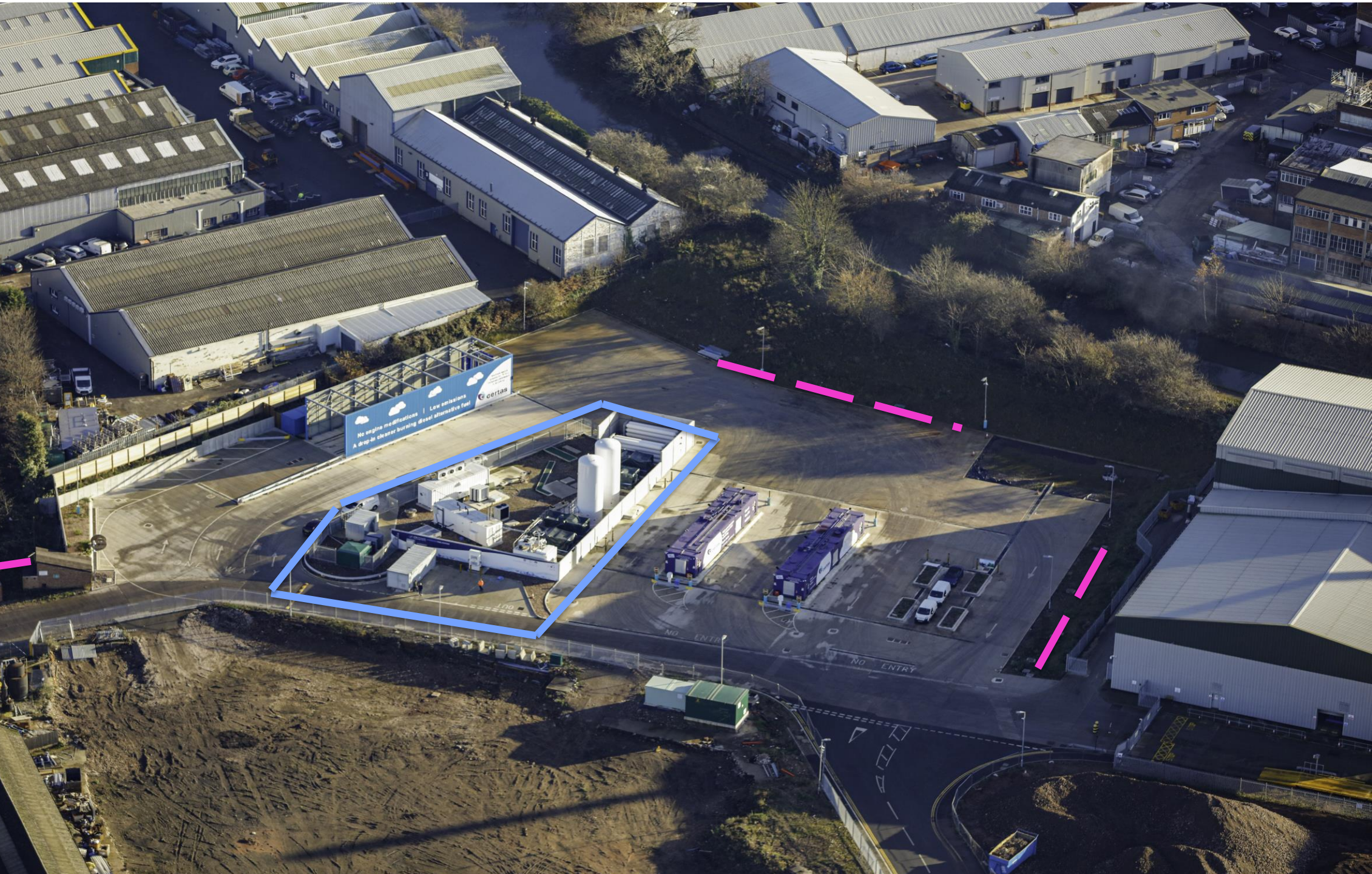
Phase 2
Low and Zero
Carbon refueling

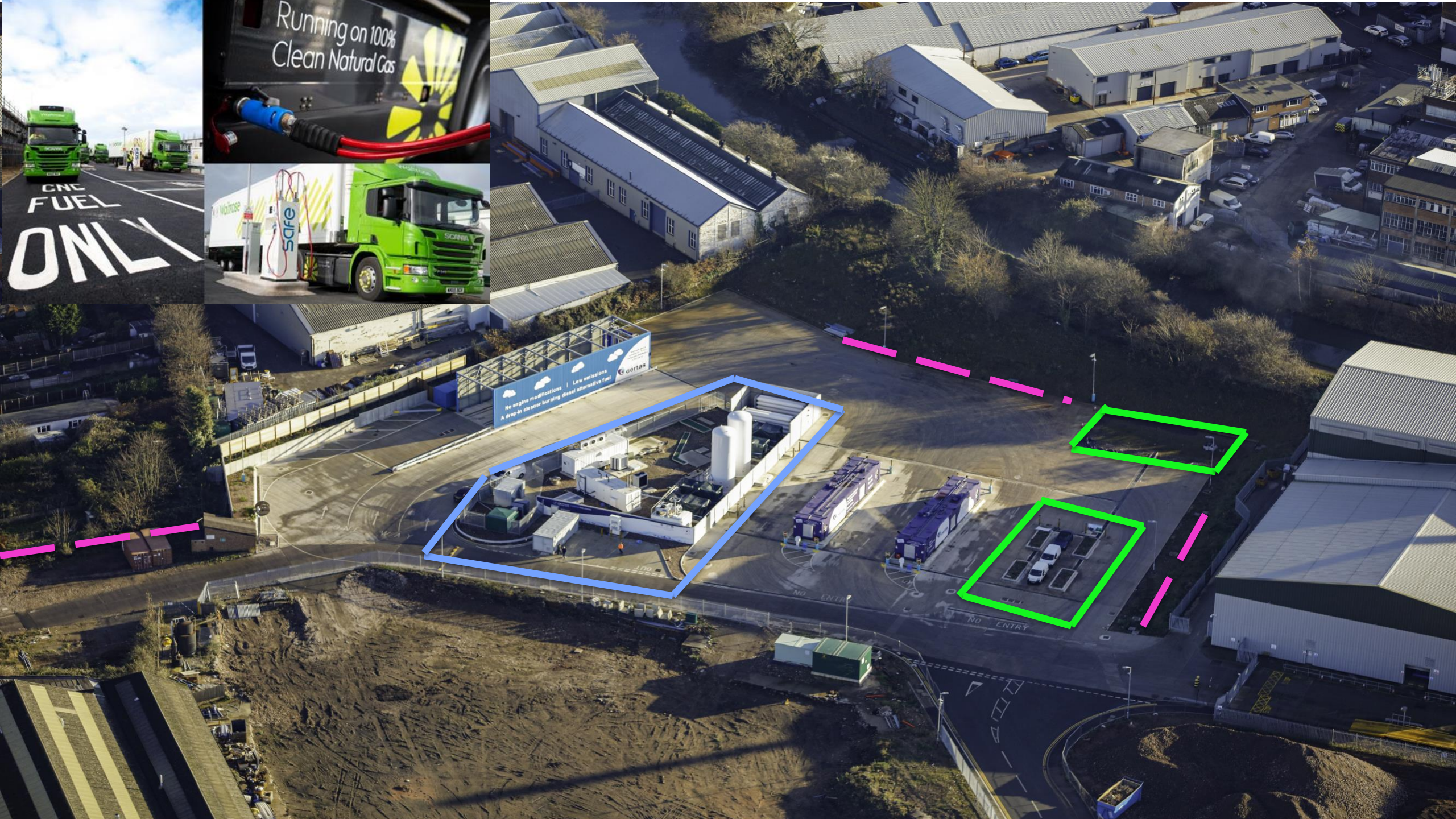


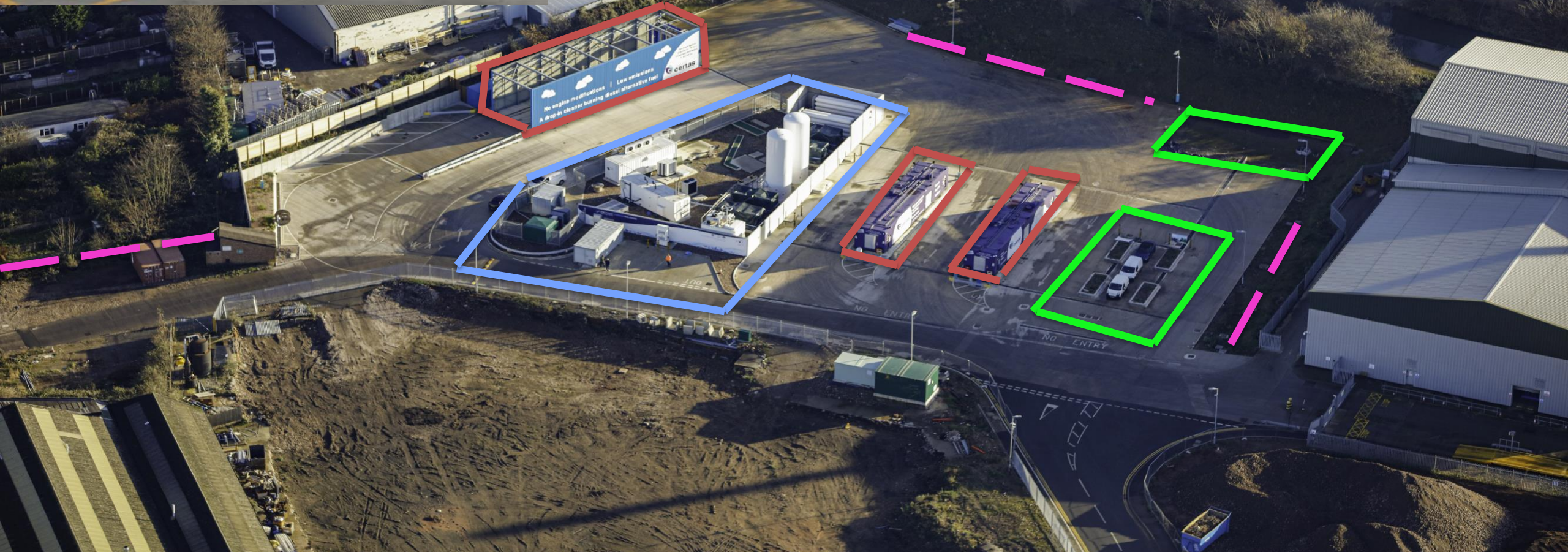
ITM POWER
Energy Storage | Clean Fuel

HYDROGEN FUEL STATION











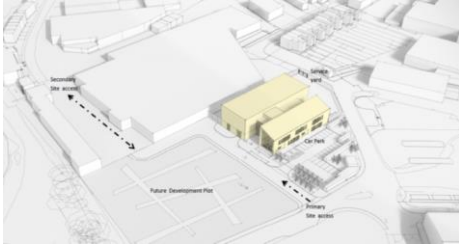


Phase 3

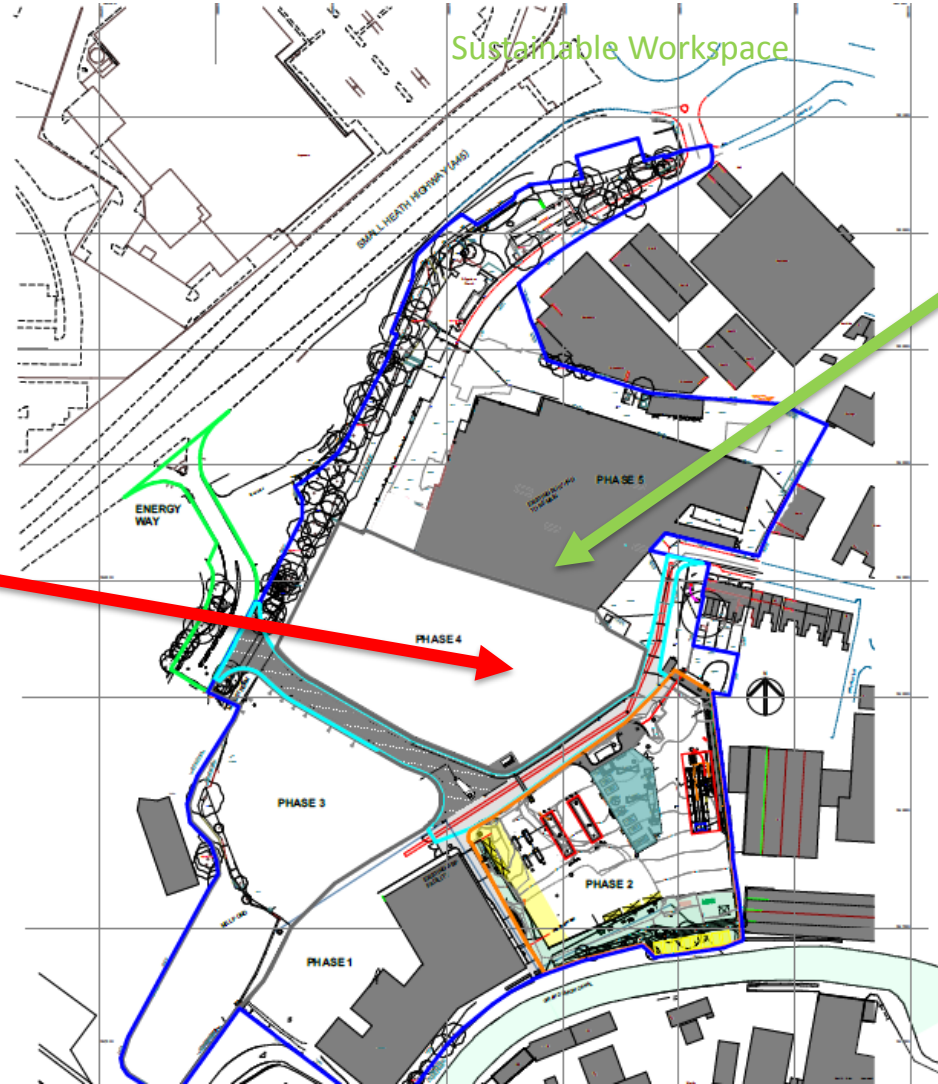




Phase 4





















Innovation Hub







TEP Energy Strategy Report

Use Case	CO2-reduction	Clean air for Birmingham	Utilization of TEED/TEP assets locally Elec. Heat H2	Perspectives / scalability	Innovation + potential subsidies	Infrastructure investment costs
Residential 						District heating network build-up
Airport 						District heating network build-up
Hydrogen 						H ₂ fueling station + trains/bus





TYSELEY ENERGY PARK



END

For further information visit

www.tyseleyenergy.co.uk

@TyseleyEnergy